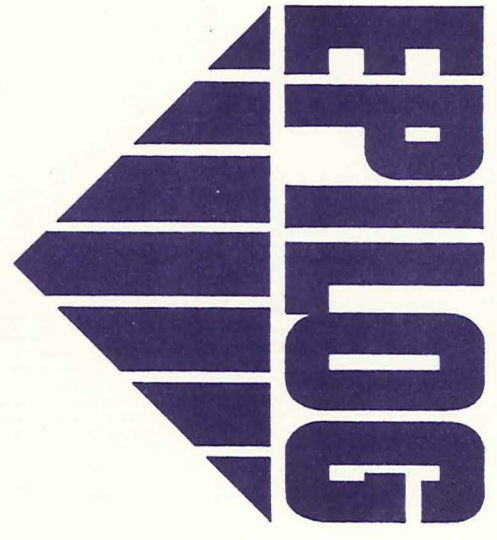


GL02668

DresserAtlas



*Complex Reservoir Analysis*

COMPANY E. G. & G. IDAHO, INC.  
 WELL RRGP-5  
 FIELD RAFFI RIVER GEOTHERMAL  
 COUNTY CASSIA STATE IDAHO  
 LOCATION N<sup>1</sup> SW  
 SEC 22 TWP 15S RGE 26E  
 ELEVATION: KB 5002 DF \_\_\_\_\_ GL 4988  
 DATE JUNE 2, 1978

FOLD HERE ↓


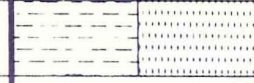
In making interpretations of logs our employees will give Customer the benefit of their best judgment, but since all interpretations are opinions based on inferences from electrical or other measurements, we cannot, and we do not guarantee the accuracy or the correctness of any interpretation. We shall not be liable or responsible for any loss, cost, damages, or expenses whatsoever incurred or sustained by the Customer resulting from any interpretation made by any of our employees.

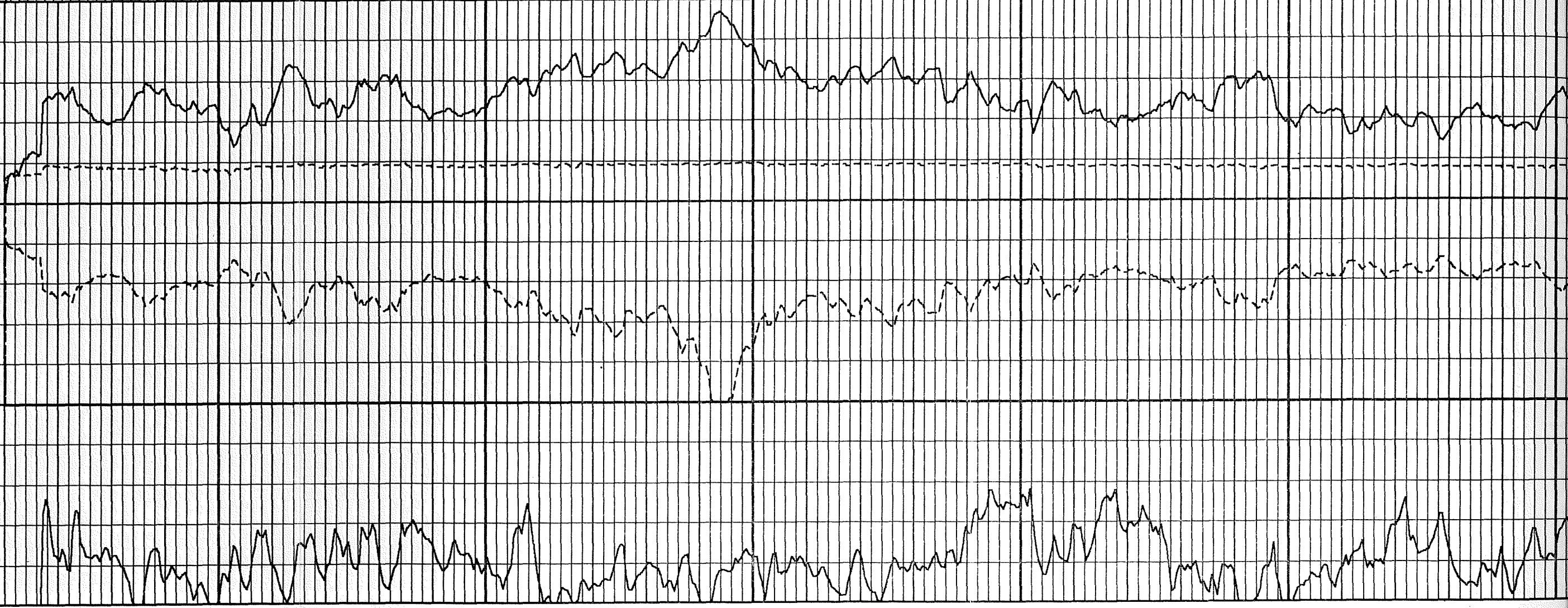
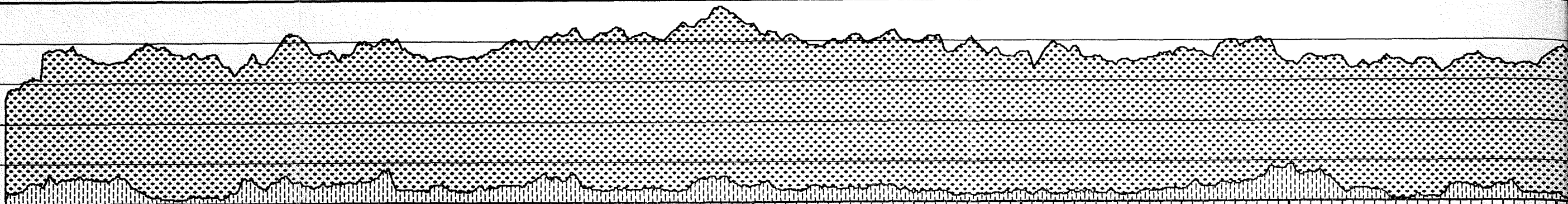
Computation	Logs Used <u>DIFL, CDCNL, BHC-AC, DEN, CAL</u>	Program <u>CRA</u>
	Center <u>DCC</u>	Log Analyst <u>WHITLOCK/DELLAI</u>
Field Data	Location <u>CODY</u>	Engineer <u>WARD/LEBSOCK</u>
		Date <u>JUNE 1978</u>
		Date <u>MAY 28, 1978</u>

COMPUTATION PARAMETERS

DEPTH INTERVAL		$\Delta t_{sh}$	$\rho_{sh}$	$\phi_{Nsh}$	$R_{sh}$	$GR_{cl}$	$GR_{sh}$	$R_w$	TM	$\rho_g$	m
FROM	TO										
1500	3750	95.5	2.2	37	2	53	125	1.5	65.5	2.4	2

REMARKS: ZONE AT 2670' POSSIBLE COAL STREAK

DEPTH	LITHOLOGIC CHARACTERISTICS	PRODUCTION CHARACTERISTICS	POROSITY AND FLUIDS % BULK VOLUME		FORMATION % BULK VOLUME		
			HYDROCARBON	WATER	CLAY	OTHER MINERALS	POROSITY
							
		WATER SATURATION 100 %	0 50 %		0 100 %		0
	APPARENT GRAIN DENSITY 2.5 gm/cc 3.0		caliper (-) Bit Size -4 0 12				
		PERMEABILITY INDEX .1	10 <sup>4</sup>				

caliper (-) Bit Size

12  
0

-4

PERMEABILITY INDEX

10<sup>4</sup>

.1

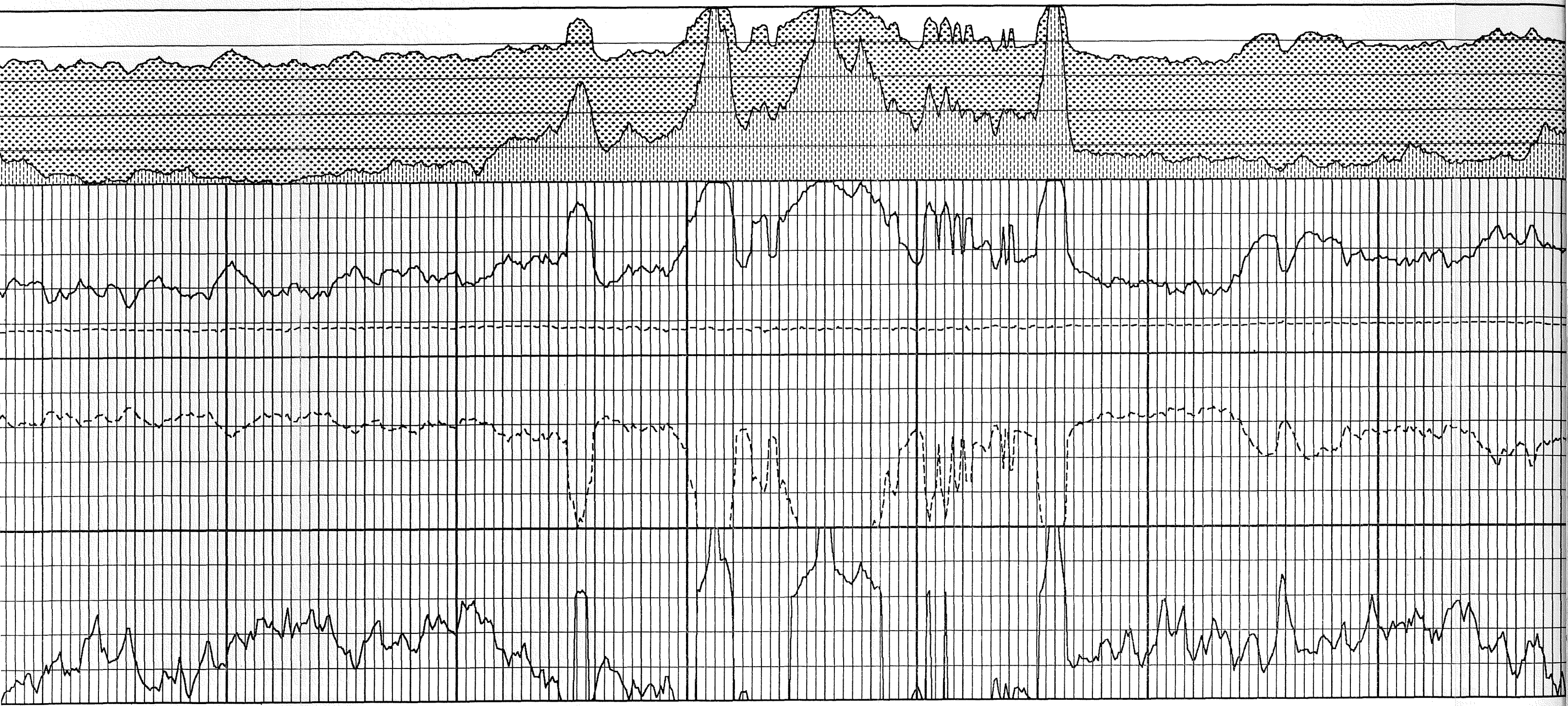
APPARENT GRAIN DENSITY gm/cc

3.0  
2.5

01600

01700

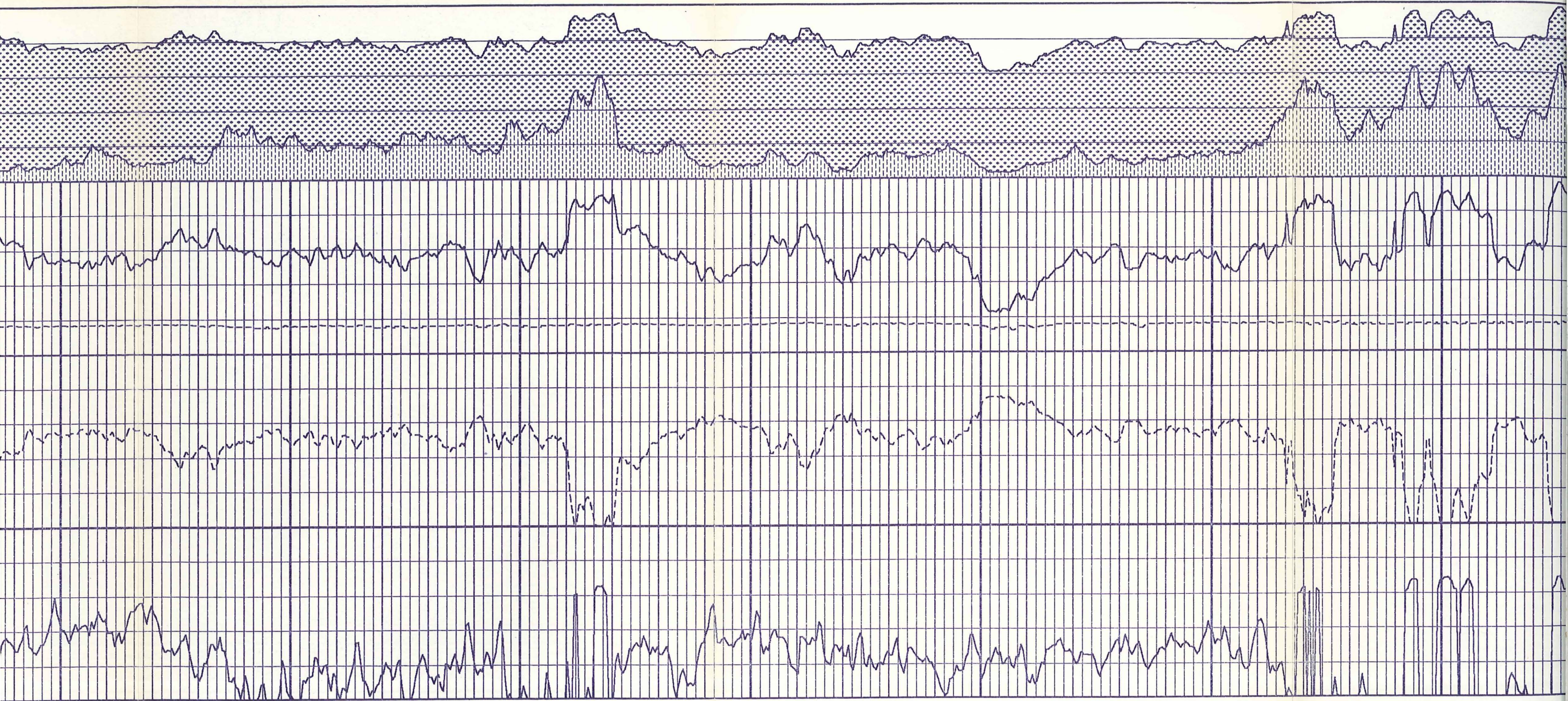
01800



01800

01900

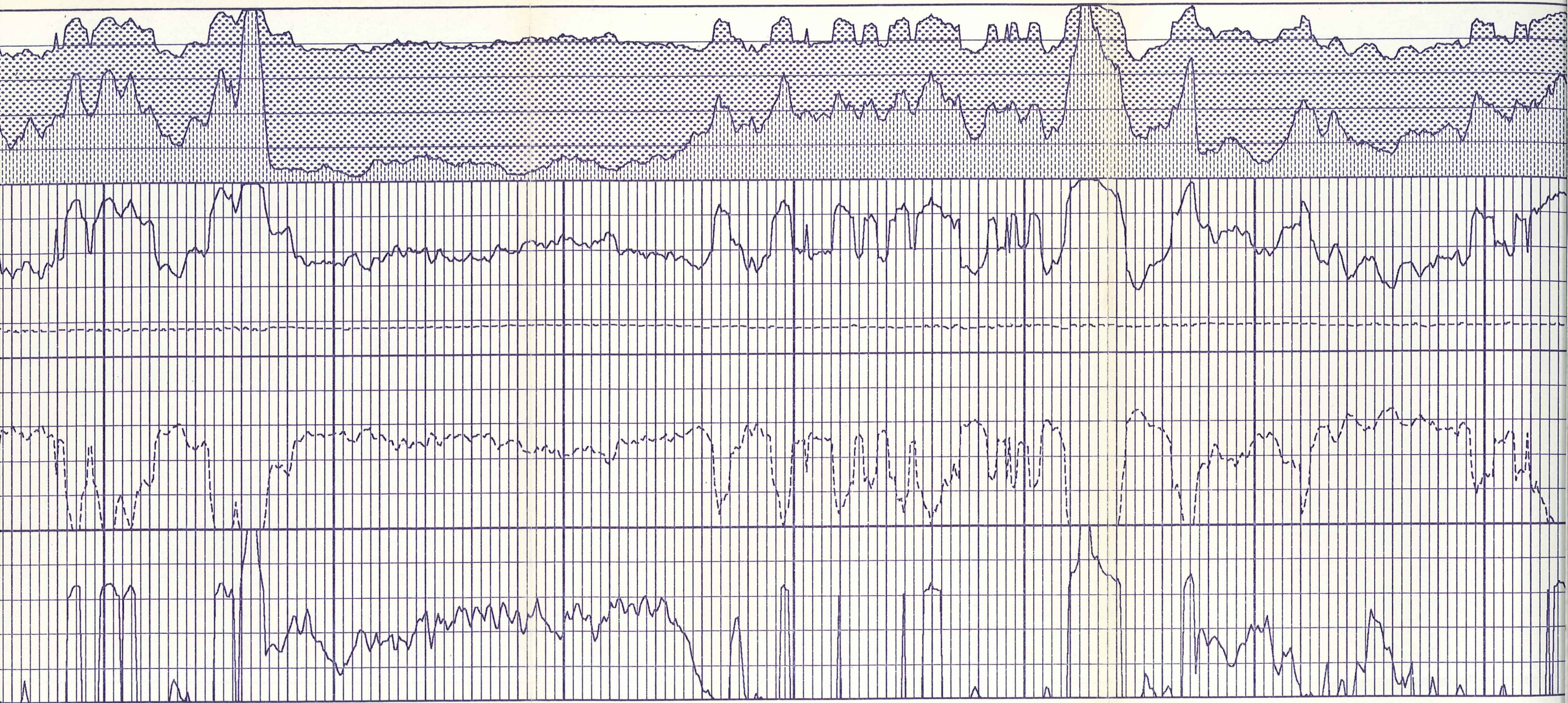
02000



02100

02200

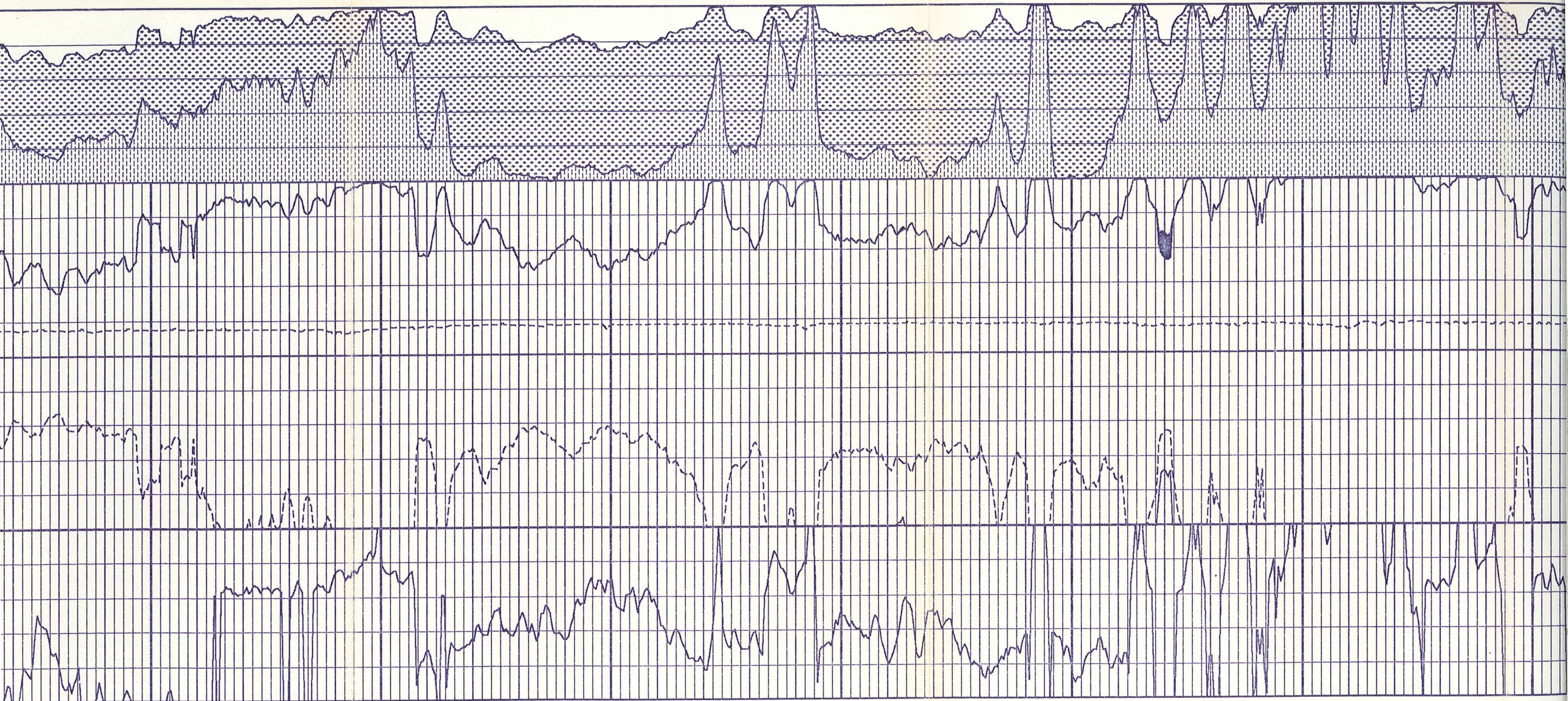
02300



02400

02500

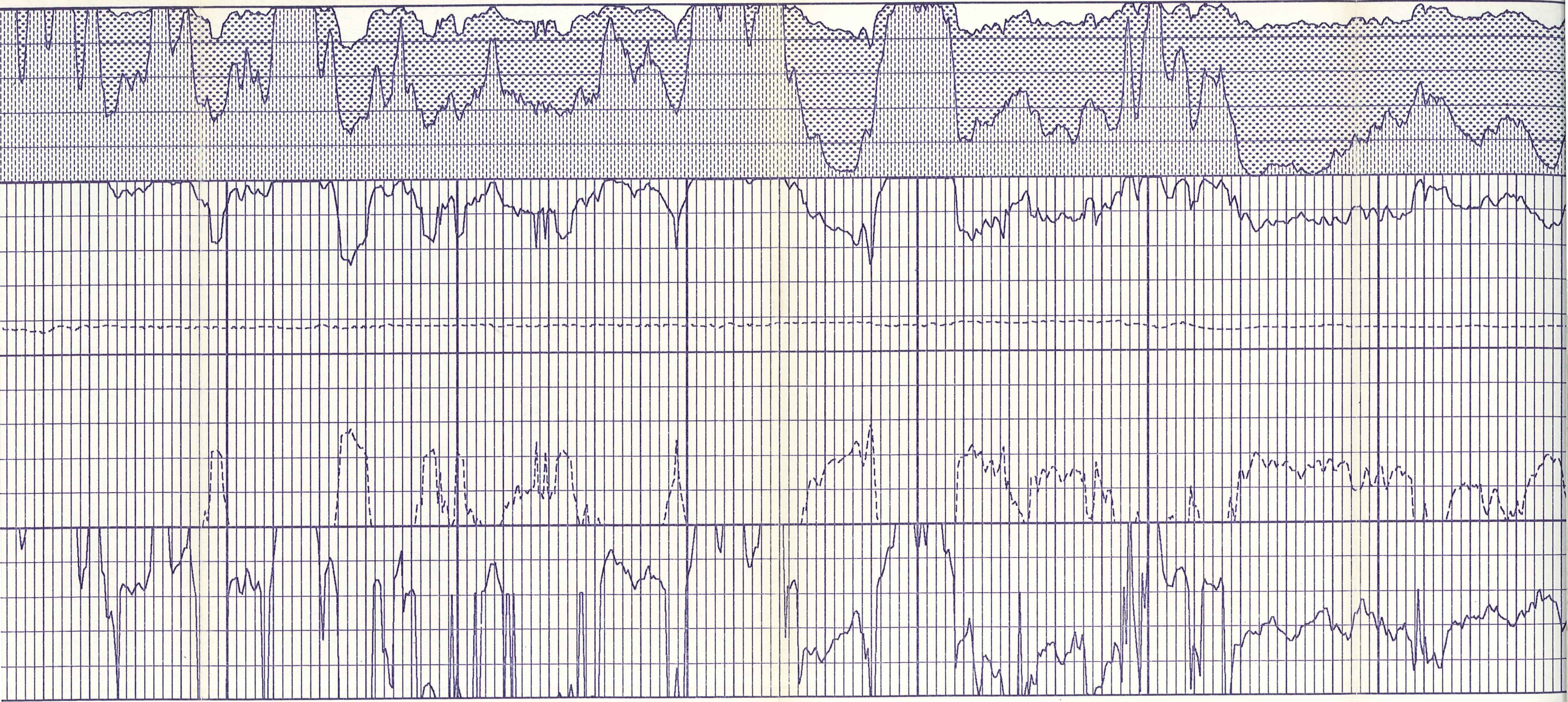
02600



02700

02800

02900

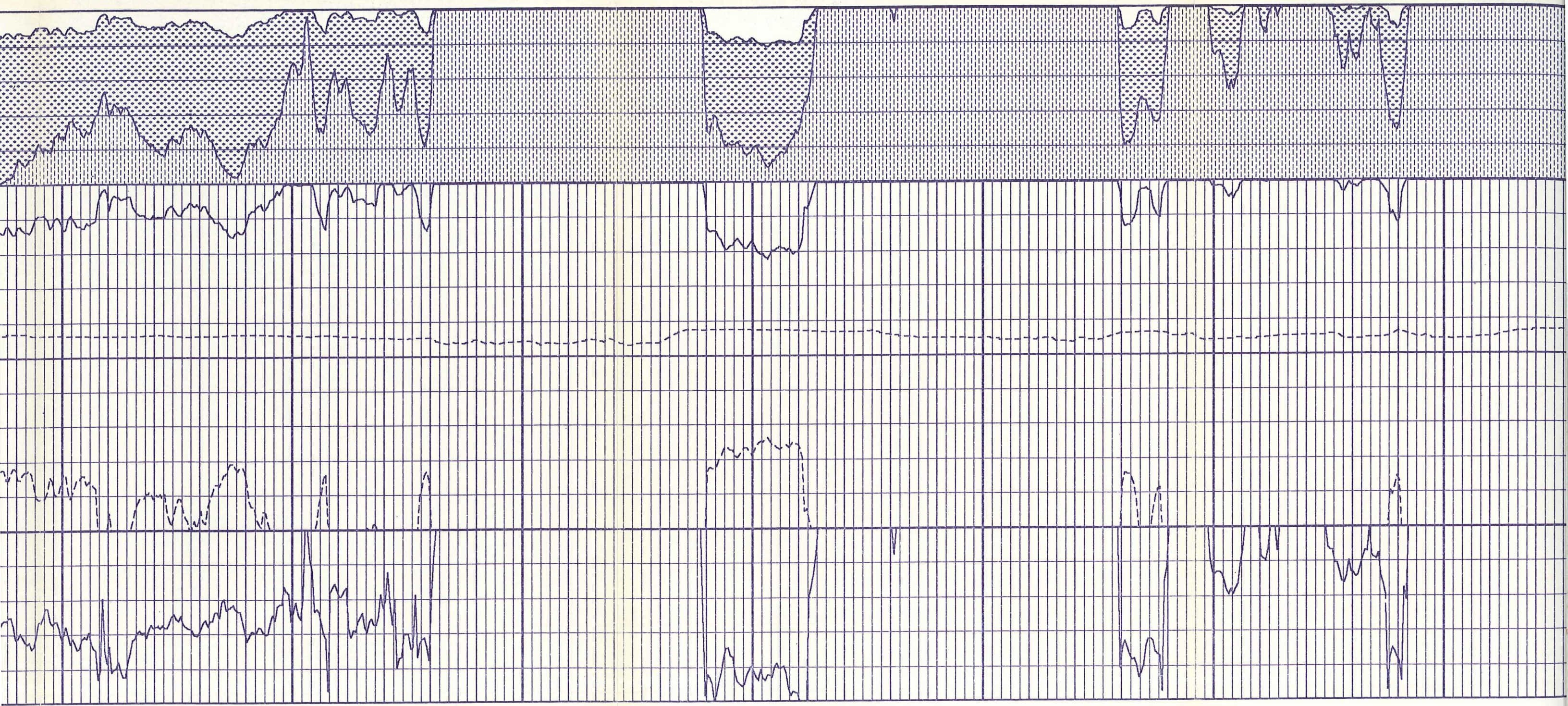


00

03000

03100

03200



03200

03300

03400

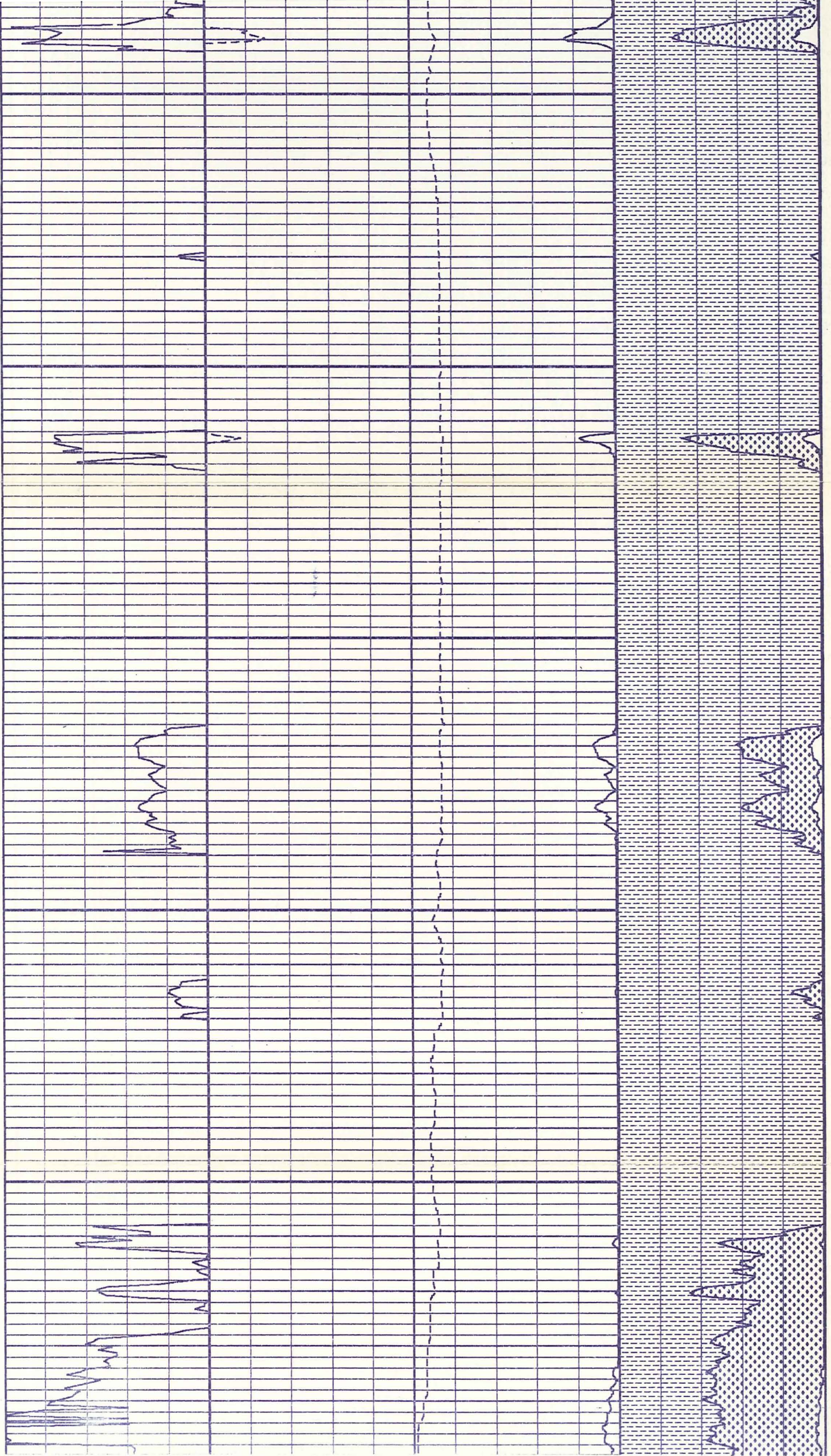
03500



03500

03600

03700



COMPANY E. G. & G. IDAHO, INC.  
WELL RRGP-5  
FIELD RAFT RIVER GEOTHERMAL  
COUNTY CASSIA  
STATE IDAHO

