



COMPENSATED

Densilog

FILE NO. GL02670

COMPANY E.G. & G. IDAHO INC.

WELL RRGp-5

FIELD RAFT RIVER GEOTHERMAL

COUNTY CASSIA STATE IDAHO

LOCATION:

NE SW

SEC 22 TWP 15S RGE 26E

Other Services
BHC/CDN/GR
DIFF. TEMP
4 ARM CALI
PER

Permanent Datum G.L. Elev. 4988

Log Measured from K.B., 14 Ft. Above Permanent Datum

Drilling Measured from K.B.

Elevations:
KB 5002
DF
GL 4988

Date	5-28-78			
Run No.	ONE			
Depth—Driller	3743			
Depth—Logger	3744			
Bottom Logged Interval	3742			
Top Logged Interval	1508			
Casing—Driller	13 3/8 @ 1510	@	@	@
Casing—Logger	1508			
Bit Size	12 1/4			
Type Fluid in Hole	FLOCCULATED WATER			
Density and Viscosity	9.2	32		
pH and Fluid Loss		cc	cc	cc
Source of Sample	FLOWLINE			
Rm @ Meas. Temp.	2.3 @ 62 °F	@	°F	@
Rmf @ Meas. Temp.	1.7 @ 68 °F	@	°F	@
Rmc @ Meas. Temp.	2.8 @ 68 °F	@	°F	@
Source of Rmf and Rmc	MEAS MEAS			
Rm @ BHT	0.72 @ 198 °F	@	°F	@
Time Since Circ.	16 HRS.			
Max. Rec. Temp. Deg. F.	198 °F		°F	°F
Equip. No. and Location	6180 CODY			
Recorded By	L. LEBSOCK & J. WARD			
Witnessed By	MR. STEADMAN			

FOLD HERE

Remarks:

Equipment Used

Series No.	Run No.	S.O.	Tool No.	Elec. No.	Panel No.
2207	ONE	07829	29161	29161	32924
1306	ONE	07829	29161	29161	31540

Equipment Data

Run No.	Tool Model No.	Serial No.	Diam.	Computer Model No.	Serial No.	Source Model No.	Serial No.
ONE	1306	31931	3 5/8	D6G4	SCINT	6"	15'
2207	29161	4 1 1/16	2254T	32924	S3T20	494	

General

Hoist Truck No.	HL-6180
Auxiliary Equipment	

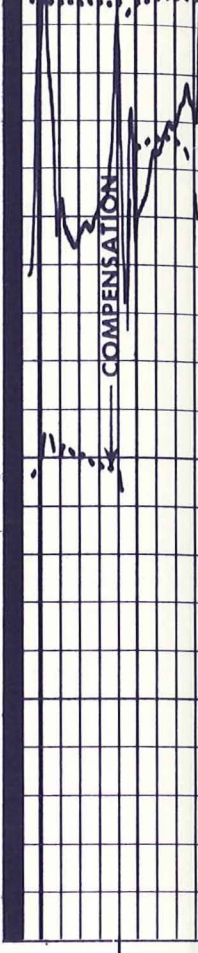
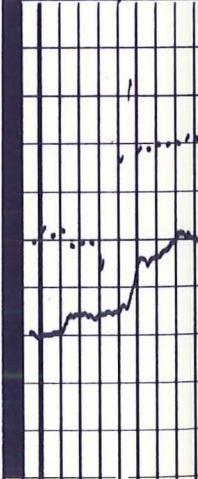
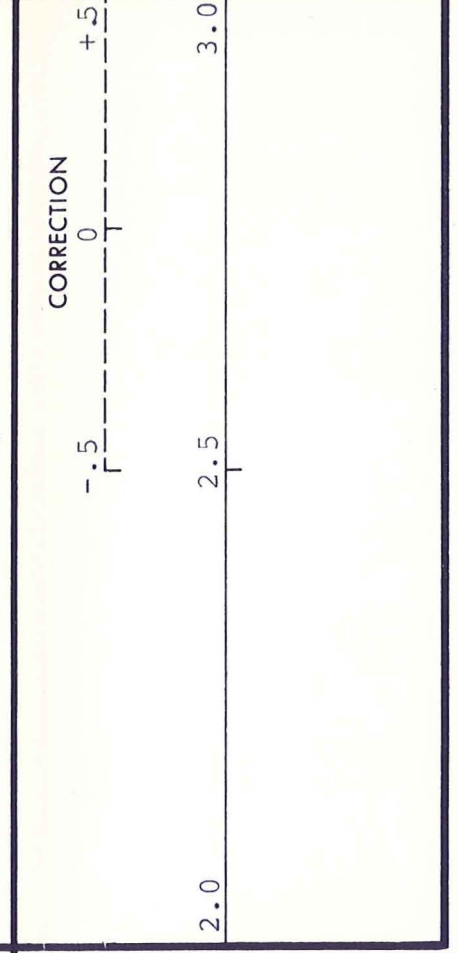
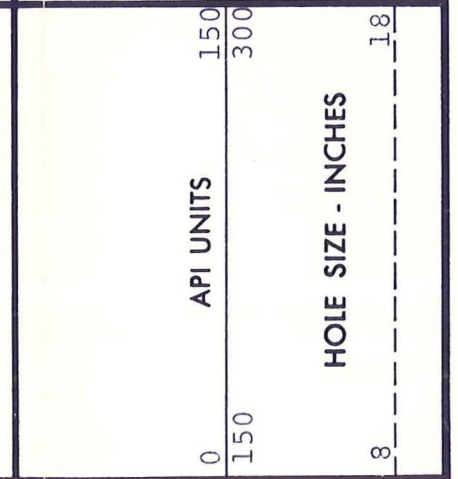
Logging Data

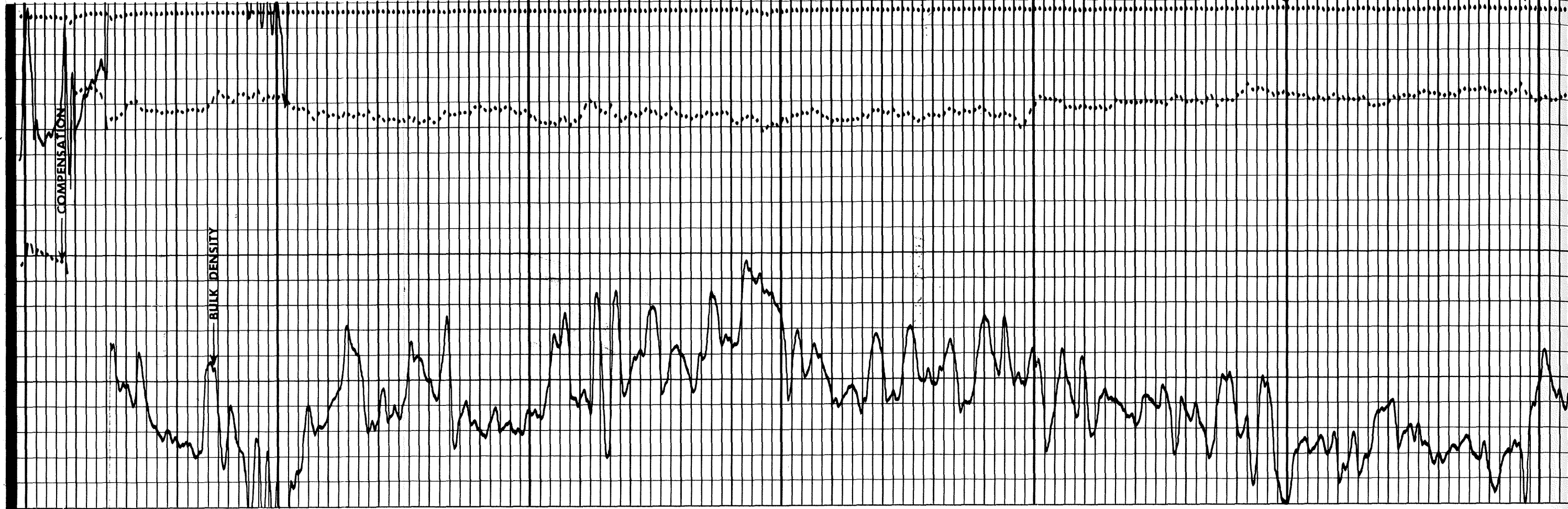
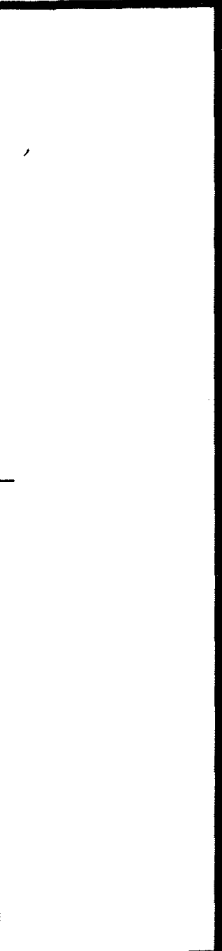
Run No.	General		Speed Ft./Min.	T.C. Sec.	Density Scale	Correction Scale	Porosity Scale Data	Gamma Ray			
	From	To						T.C. Sec.	Sens. Settings	Zero Div. L or R	API G.R. Units/Div.
1	T.D.	CSG.	REC	CCTC	2.0-3.0	-0.5-+0.5	2% CD	2	474	0	15

GAMMA RAY & CALIPER

DEPTH

BULK DENSITY GRAMS/CC



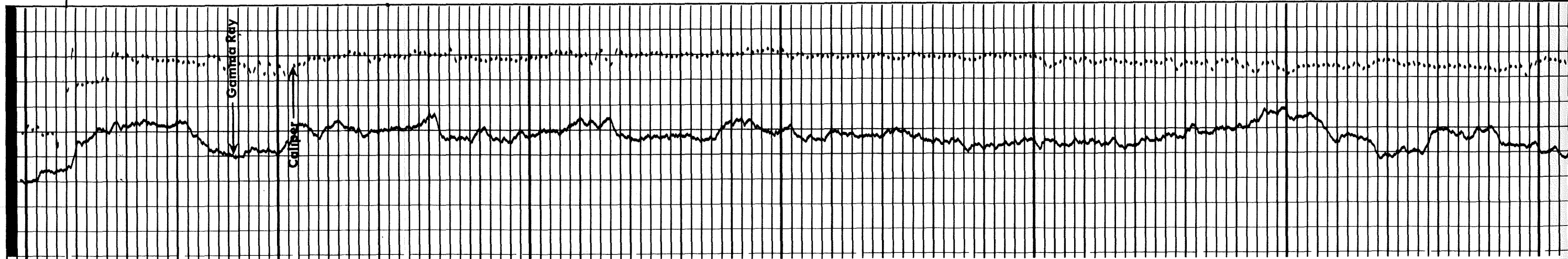
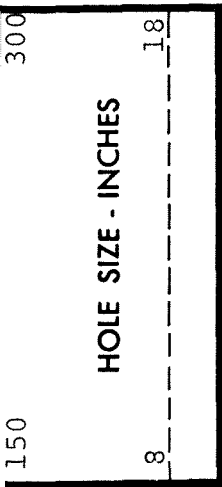


1500

1600

1700

1800

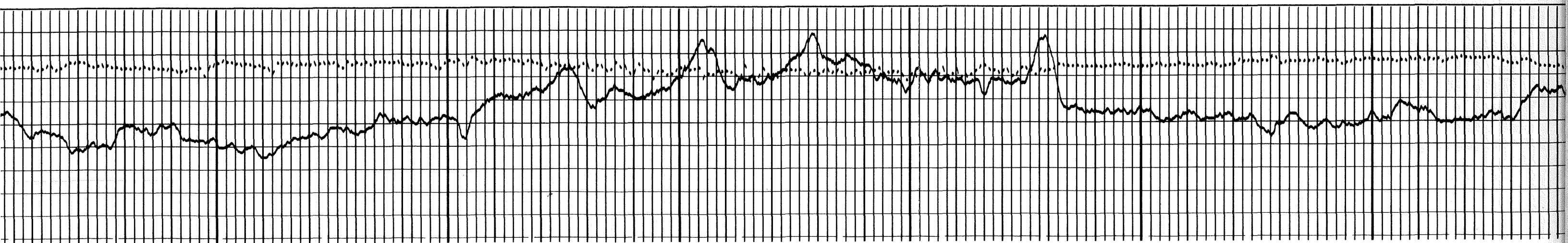


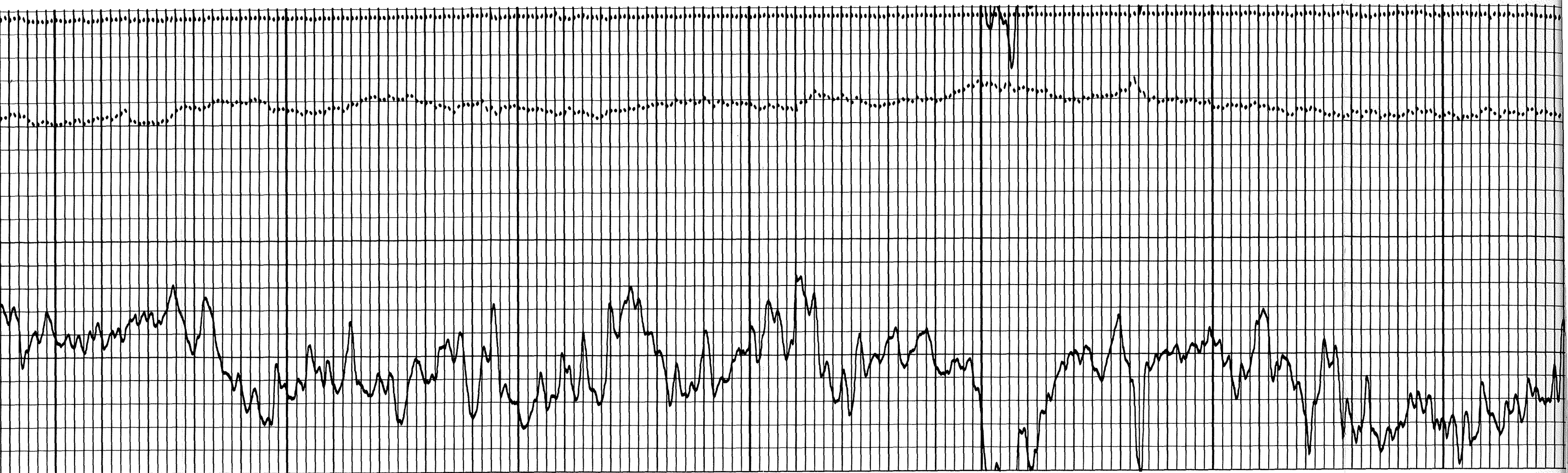


1800

1900

2000

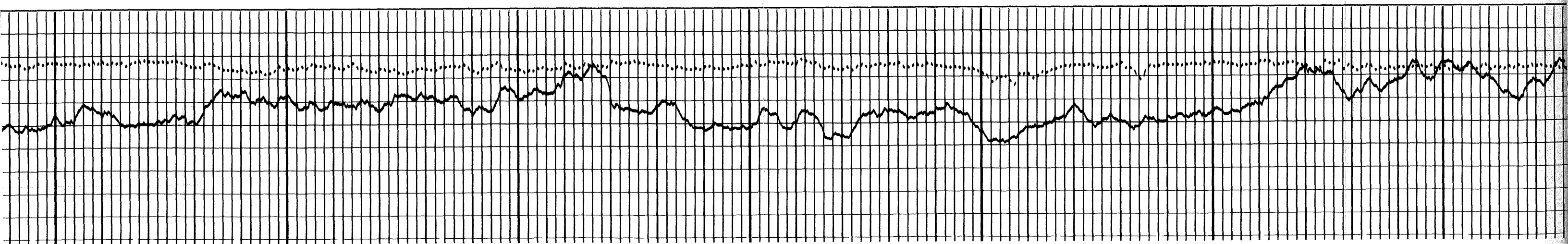


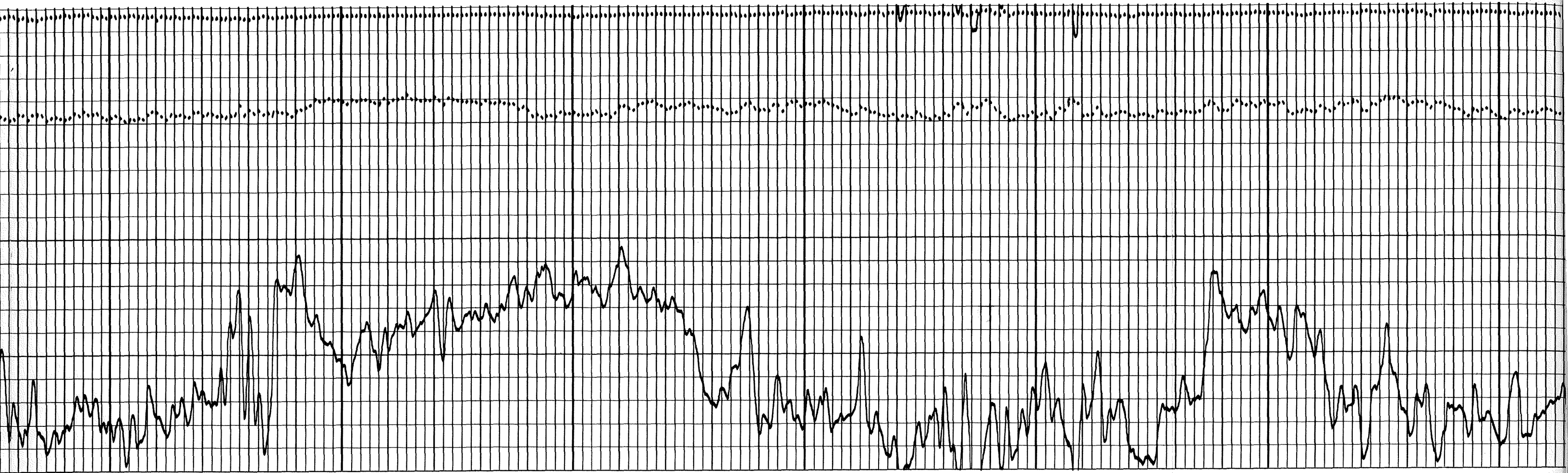


2100

2200

2300

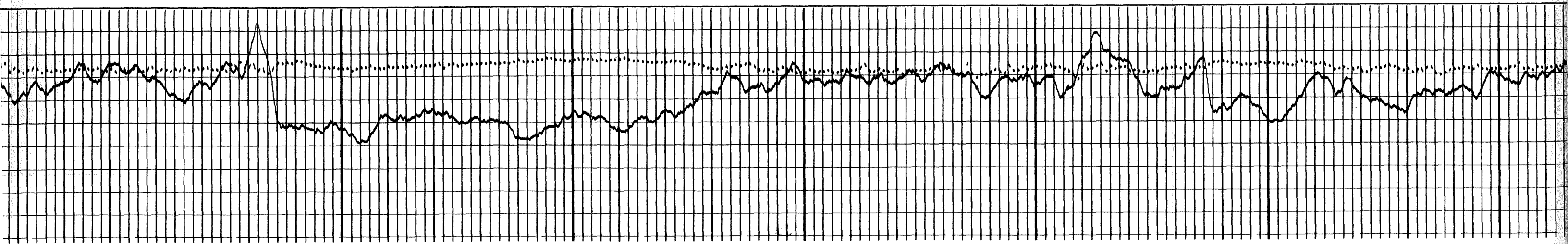


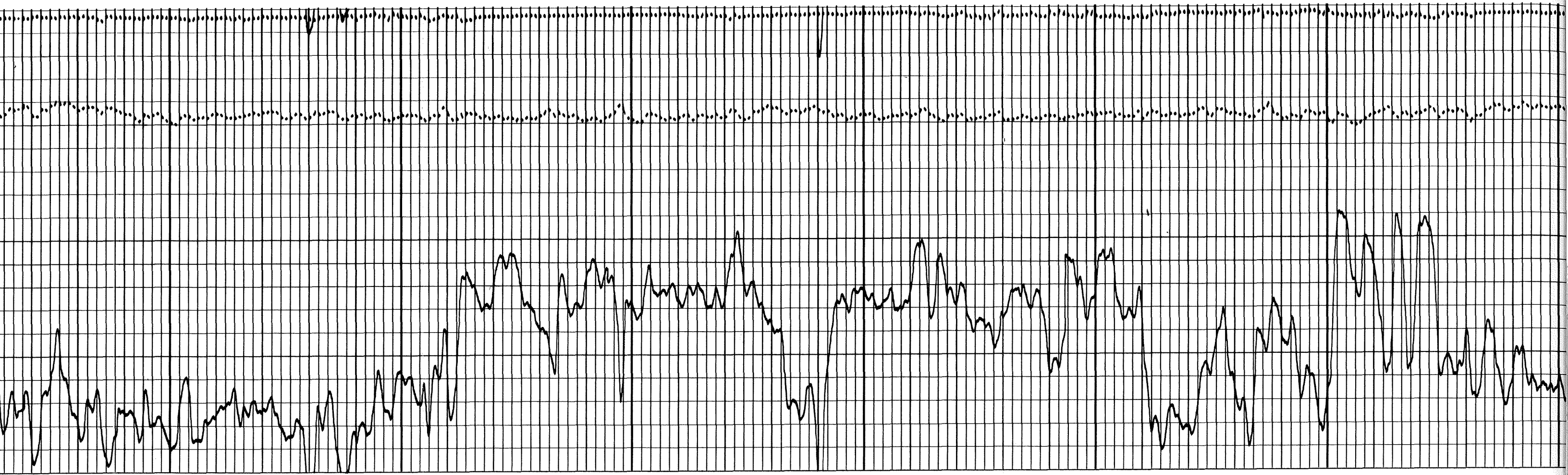


2400

2500

2600

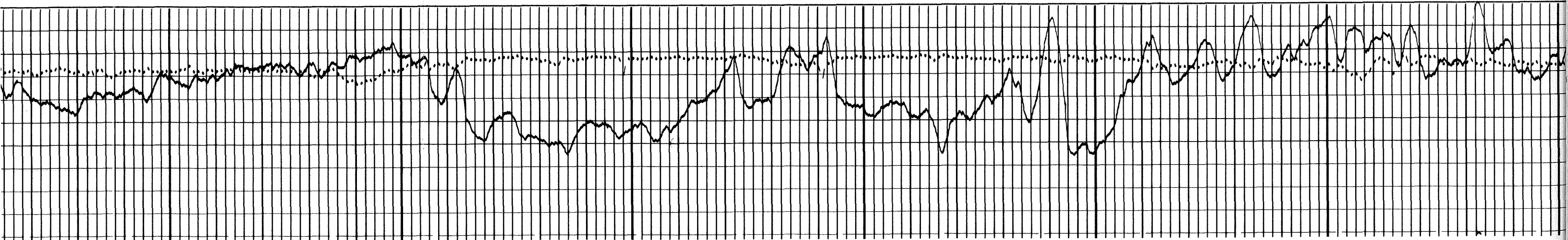




2700

2800

2900



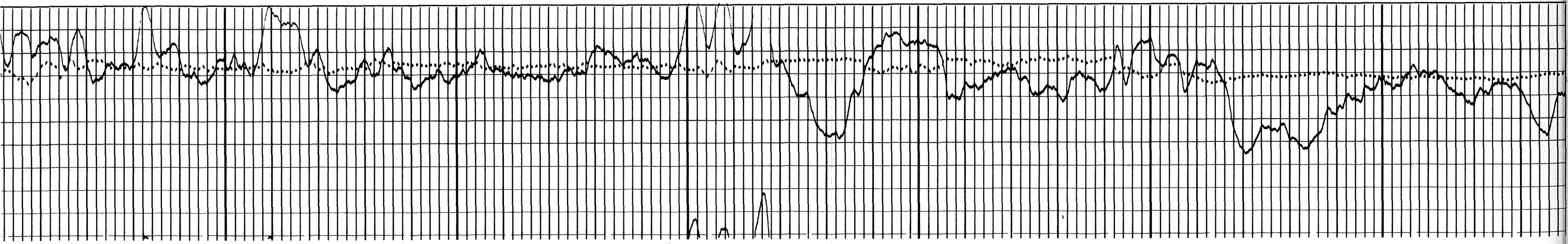


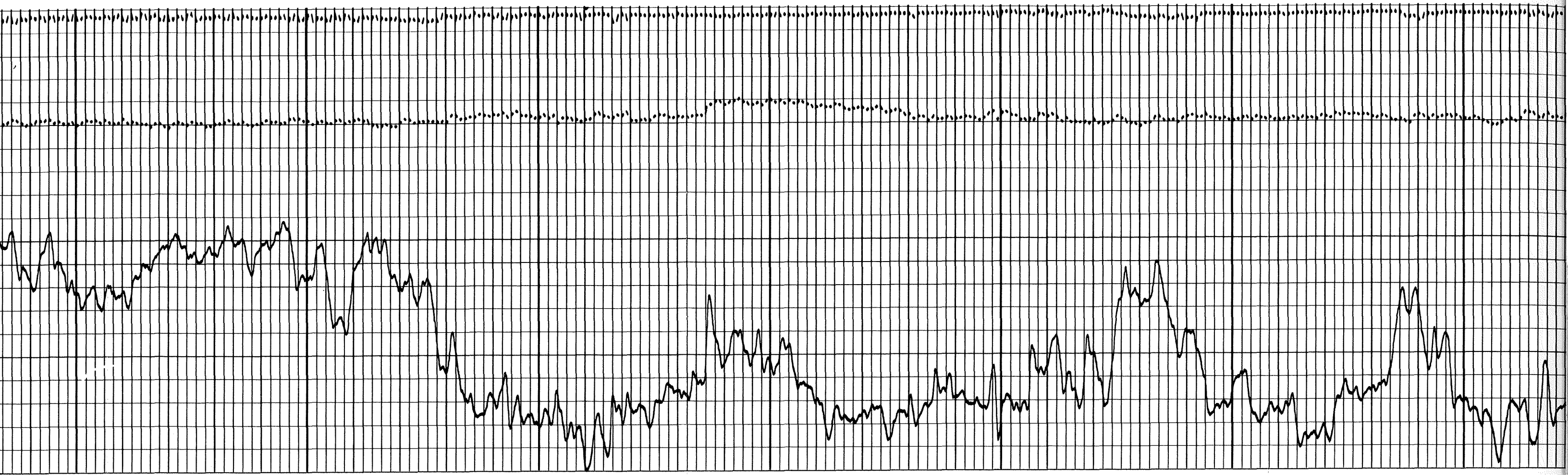
00

3000

3100

3200



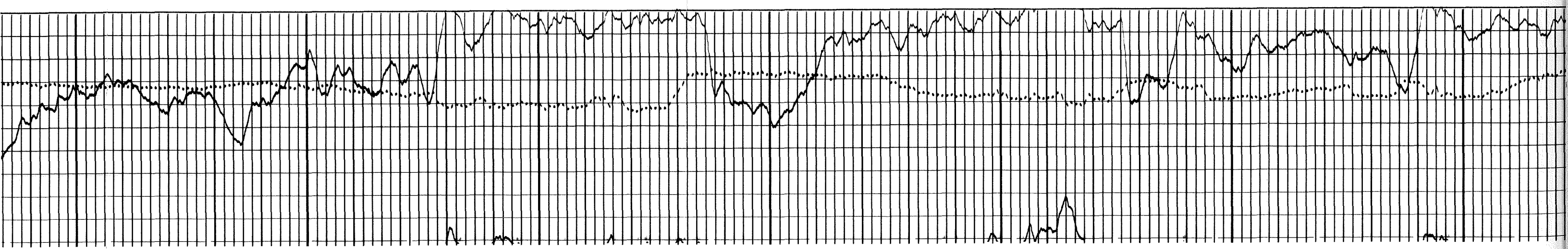


3200

3300

3400

3500

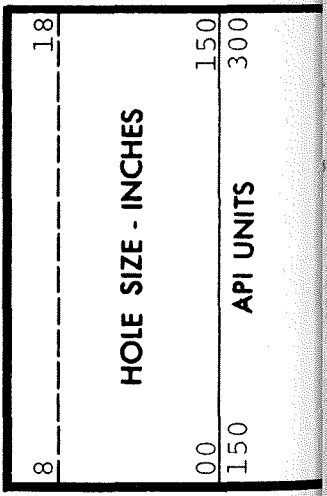
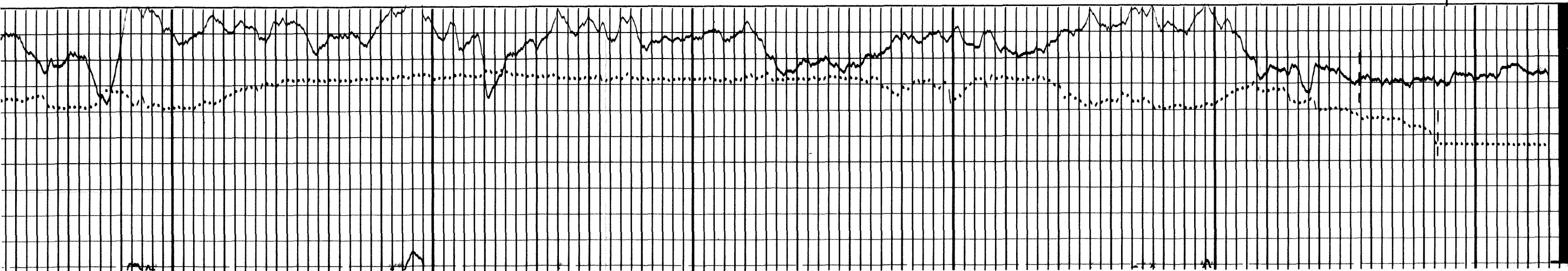
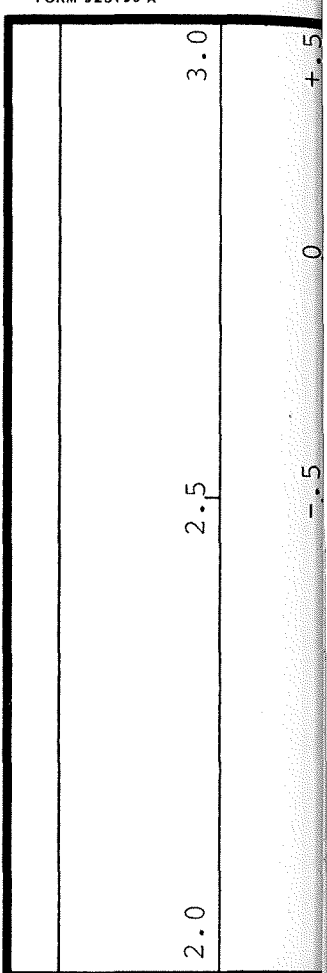




3500

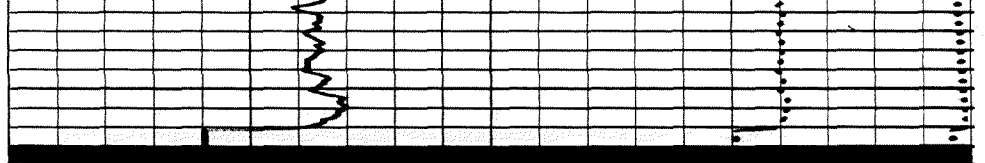
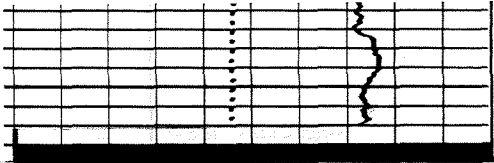
3600

3700



HOLE SIZE - INCHES

API UNITS



FORM 925199 A

8	18
HOLE SIZE - INCHES	
00	150
API UNITS	
150	300

2.0	2.5	3.0
CORRECTION		
-0.5	0	+0.5

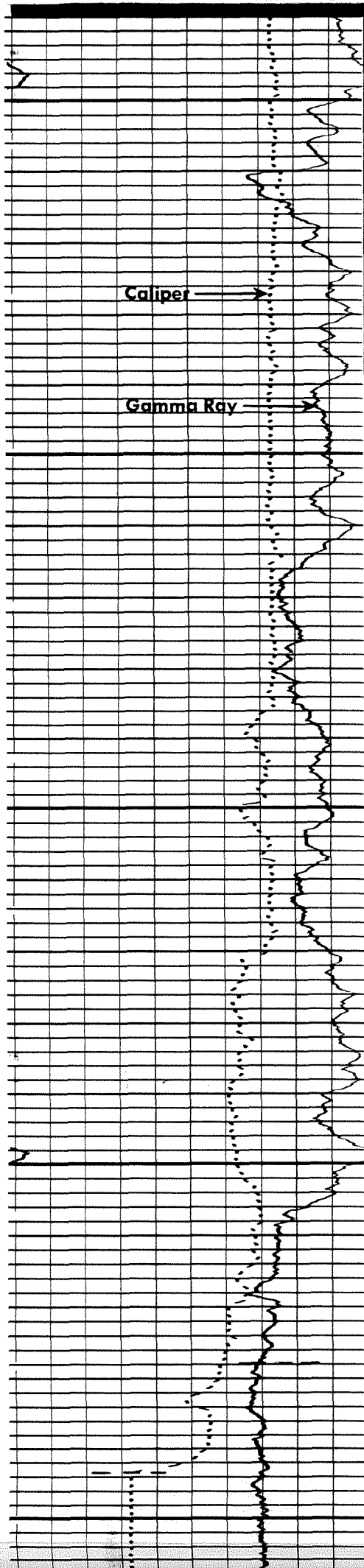
GAMMA RAY & CALIPER

DEPTH

BULK DENSITY GRAMS/CC

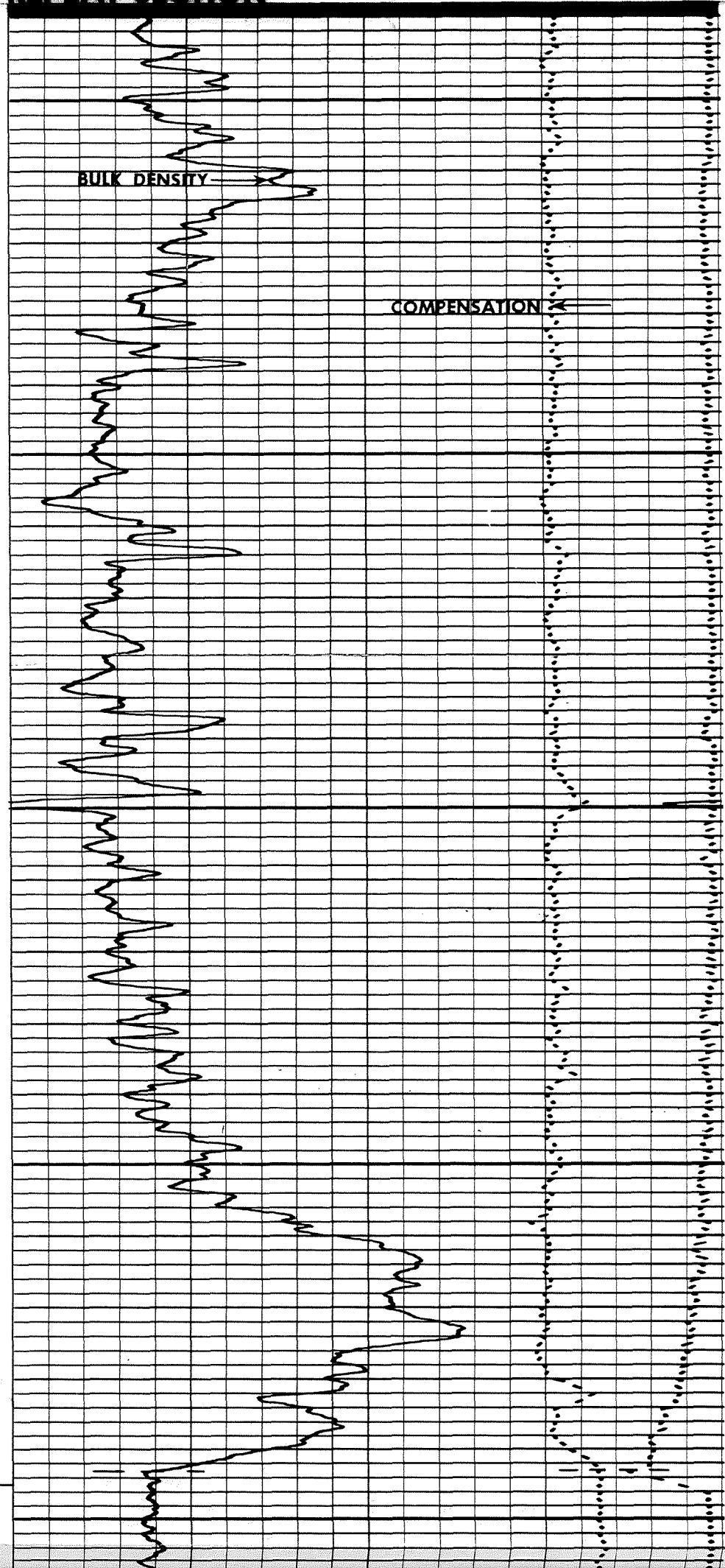
Company	E.G. & G. IDAHO INC.	Drillers T.D.	3743
Well	RRGP-5	Log F.R.	3743
Field	RAFT RIVER GEOTHERMAL	Log T.D.	3745
County	CASSIA	Elevations:	
State	IDAHO	K.B.	5002
		D.F.	
		G.I.	4988

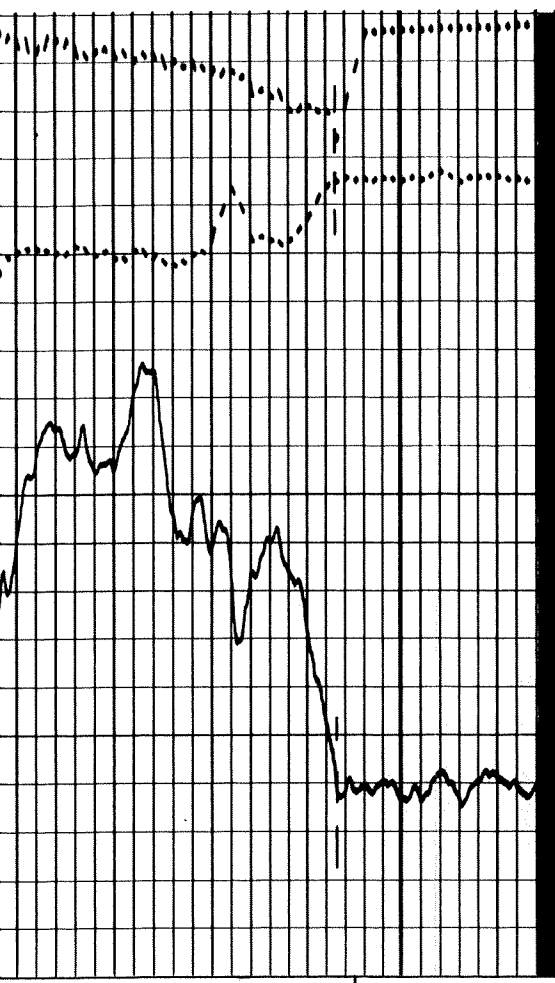
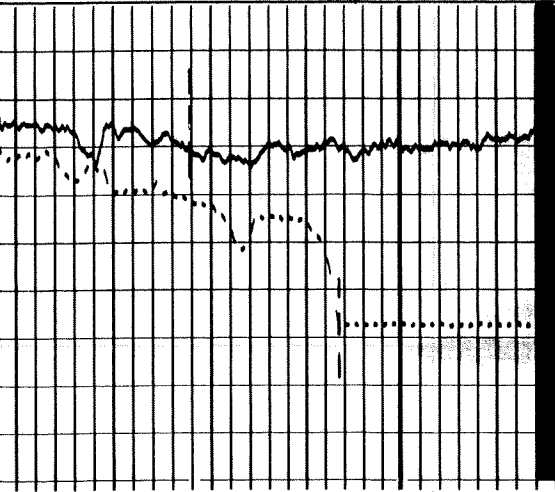
REPEAT SECTION



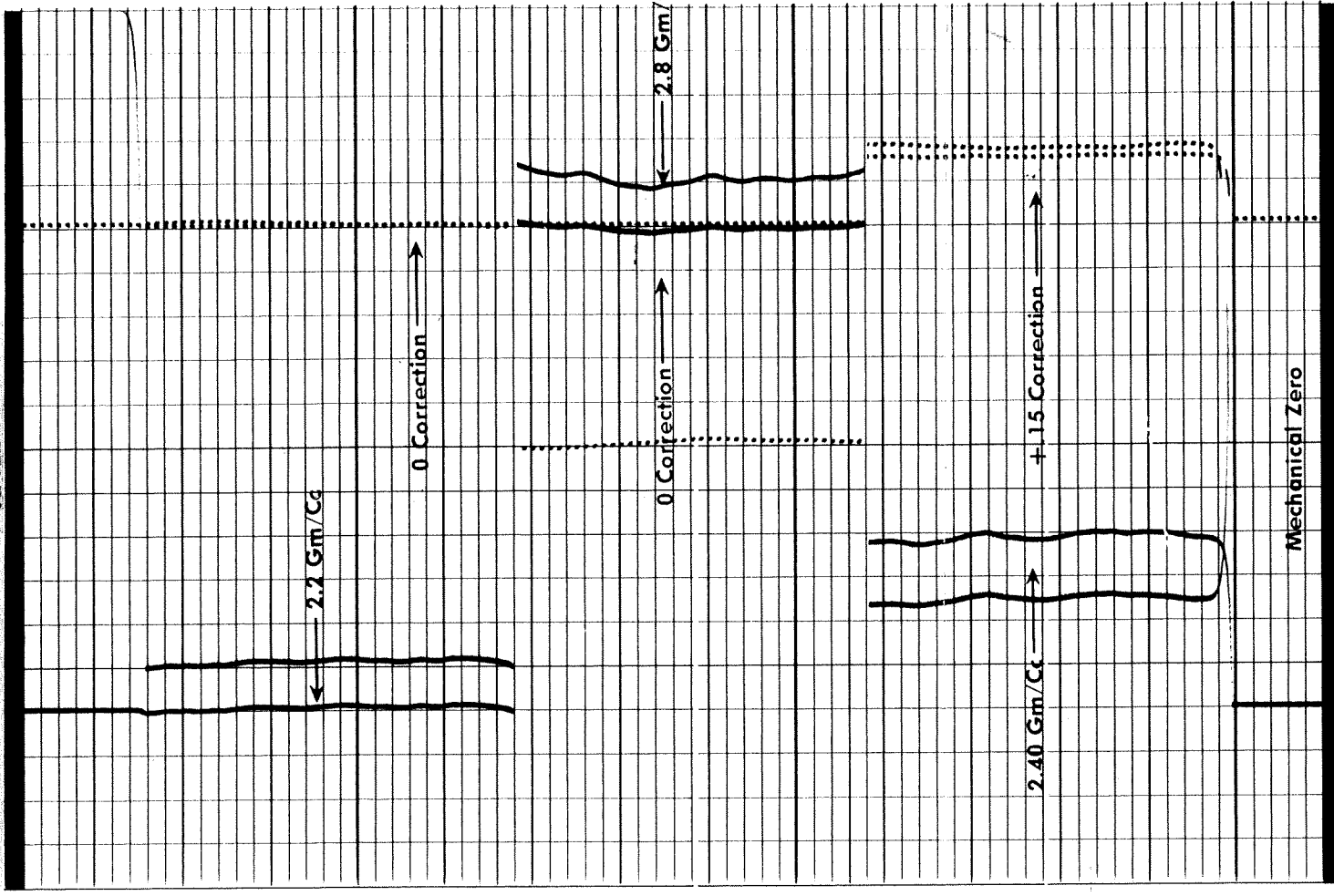
3600

3700

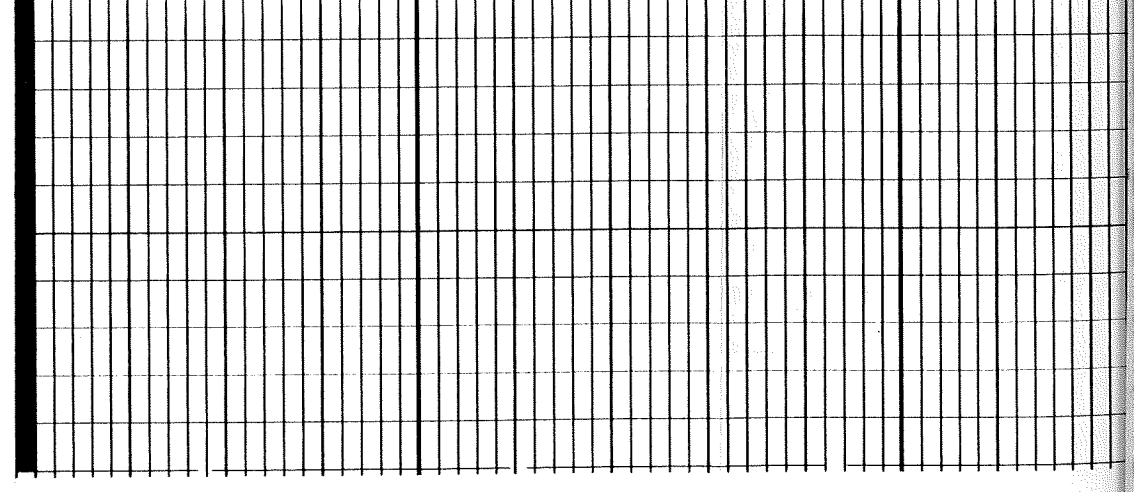


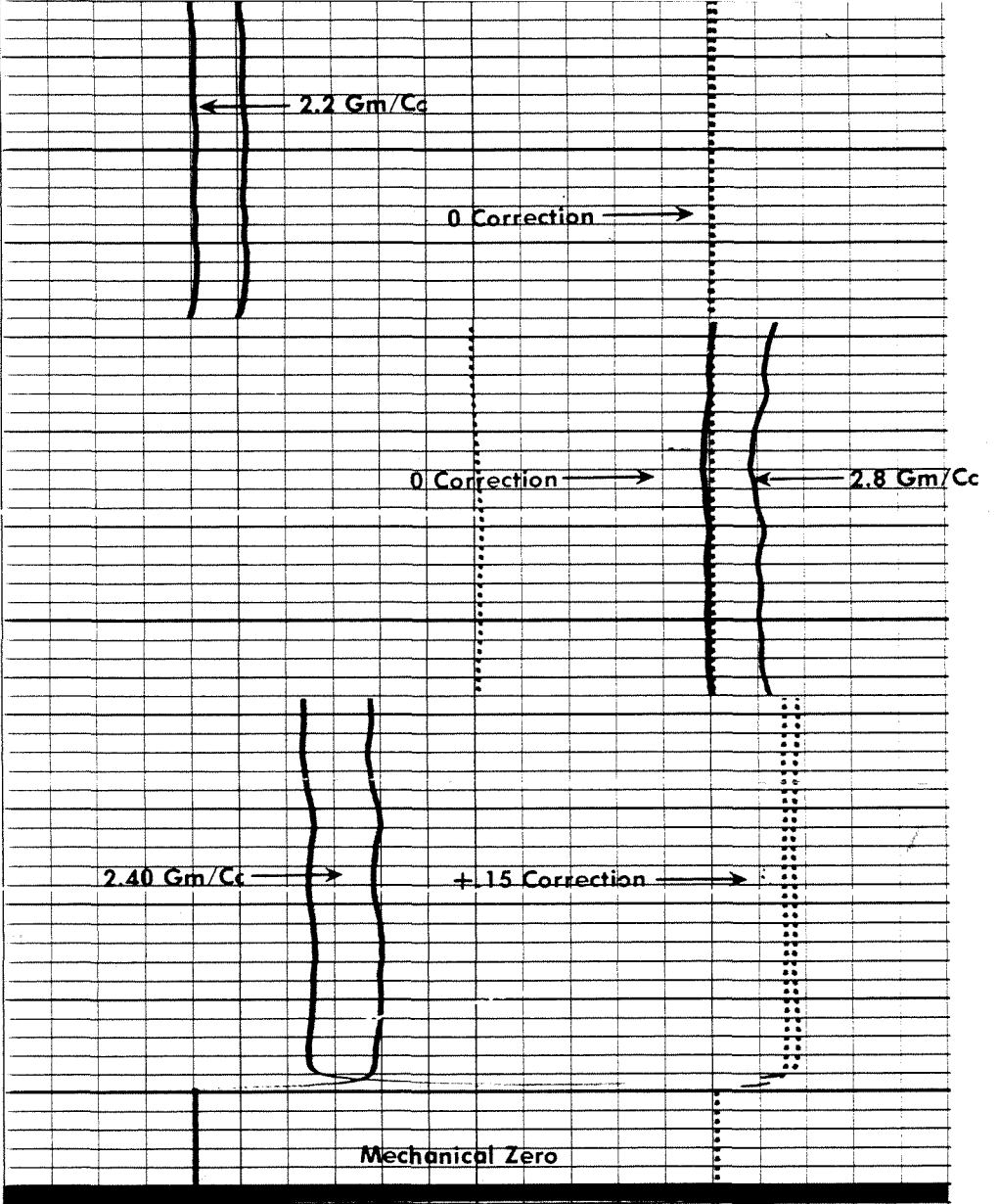
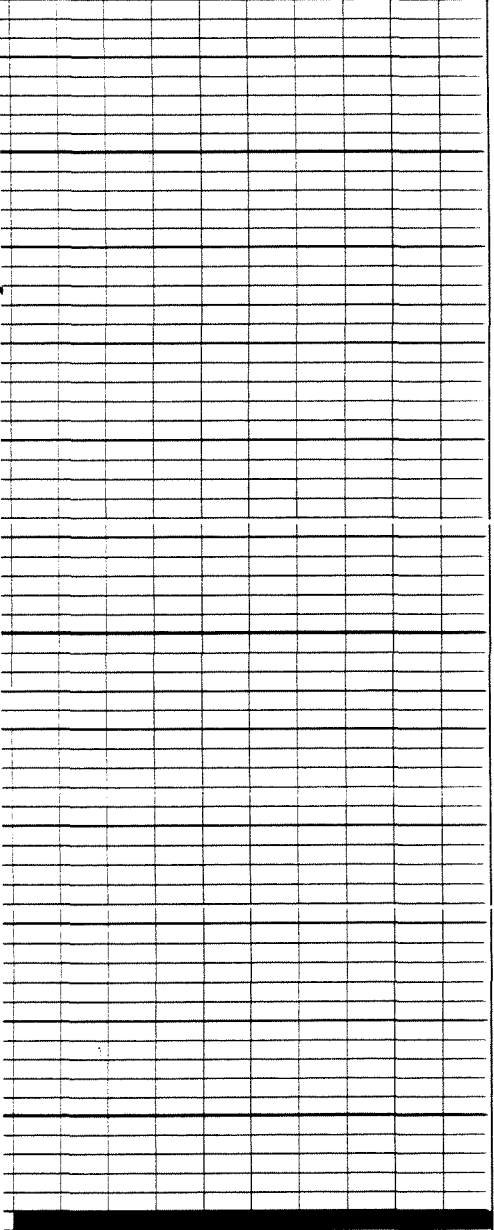


CALIBRATION DENSITOG CALIBRATION
AFTER LOG



DENSITOG CALIBRATION
BEFORE LOG





DENSILOG CALIBRATION
BEFORE LOG

