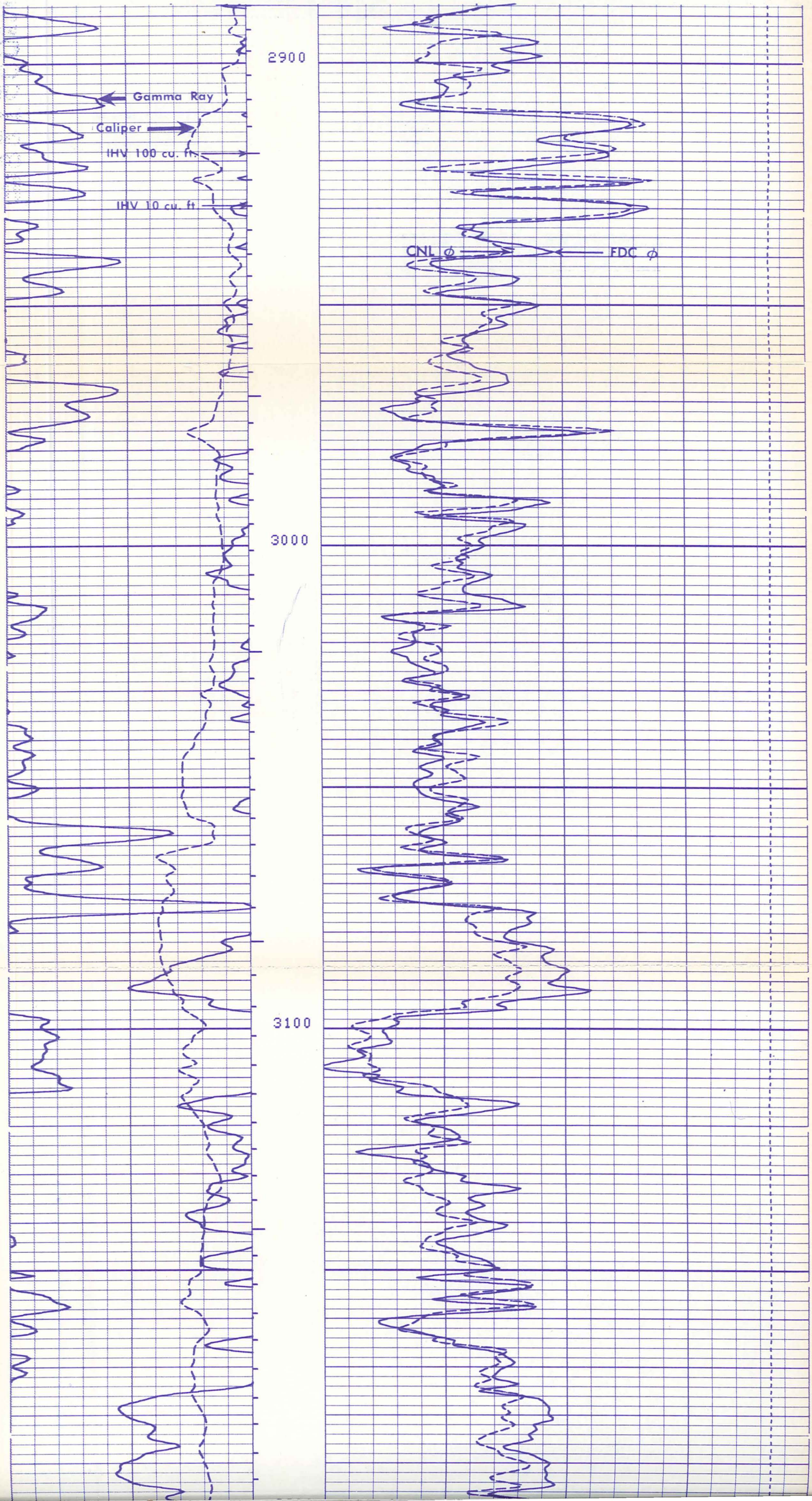
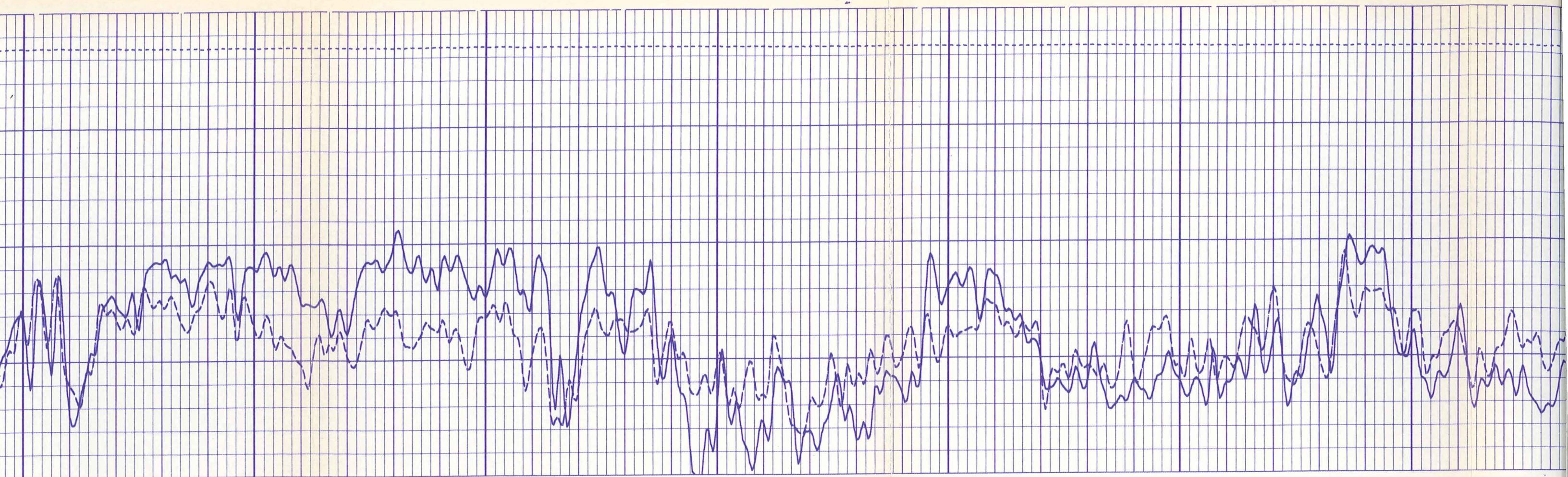


All interpretations are opinions based on inferences from electrical or other measurements and we cannot, and do not guarantee the accuracy or correctness of any interpretations, and we shall not, except in the case of gross or willful negligence on our part, be liable or responsible for any loss, costs, damages or expenses incurred or sustained by anyone resulting from any interpretation made by any of our officers, agents or employees. These interpretations are also subject to Clause 4 of our General Terms and Conditions as set out in our current Price Schedule.

LR 6

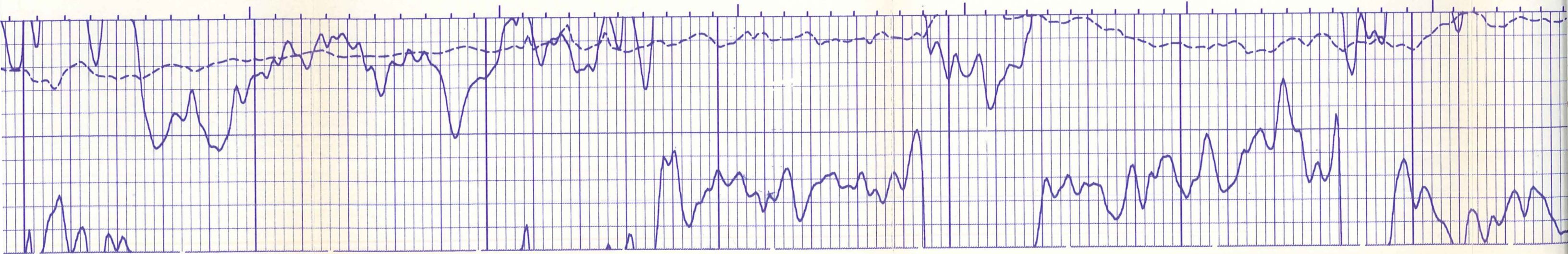


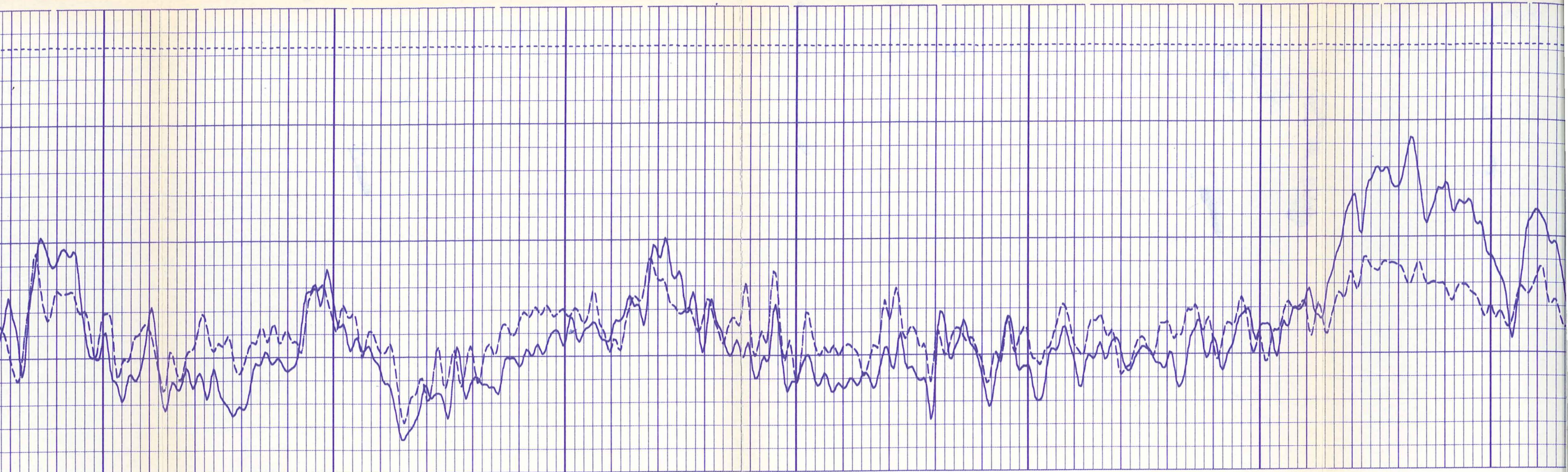


3200

3300

3400

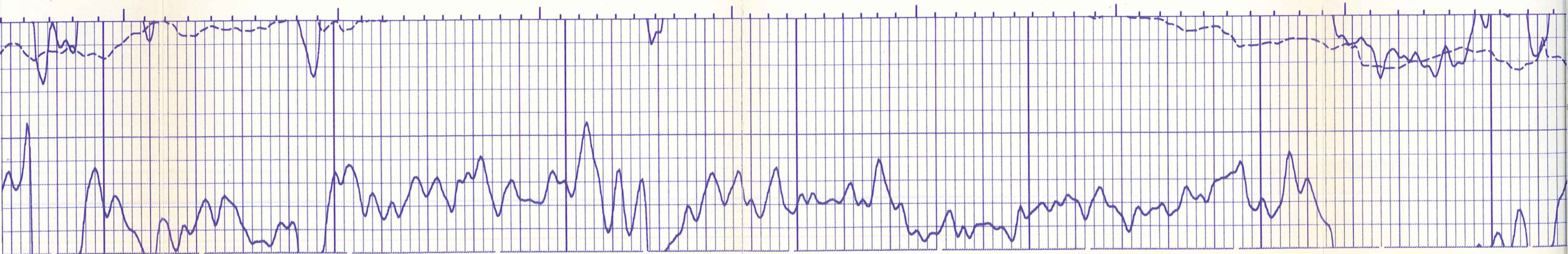


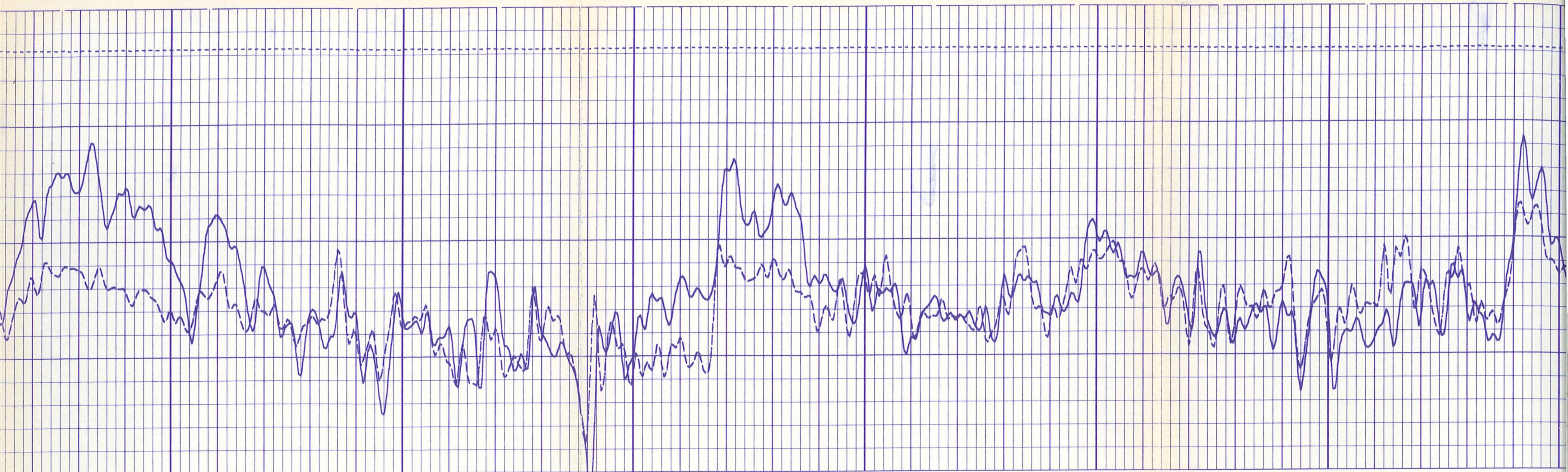


3500

3600

3700

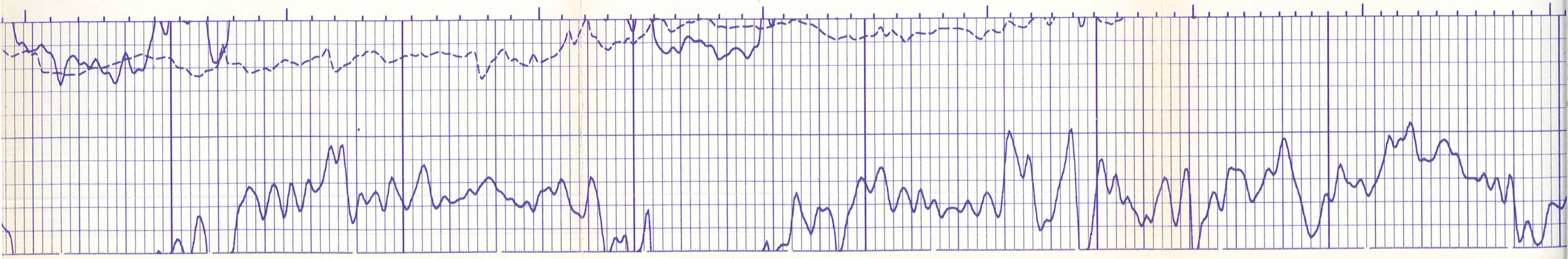


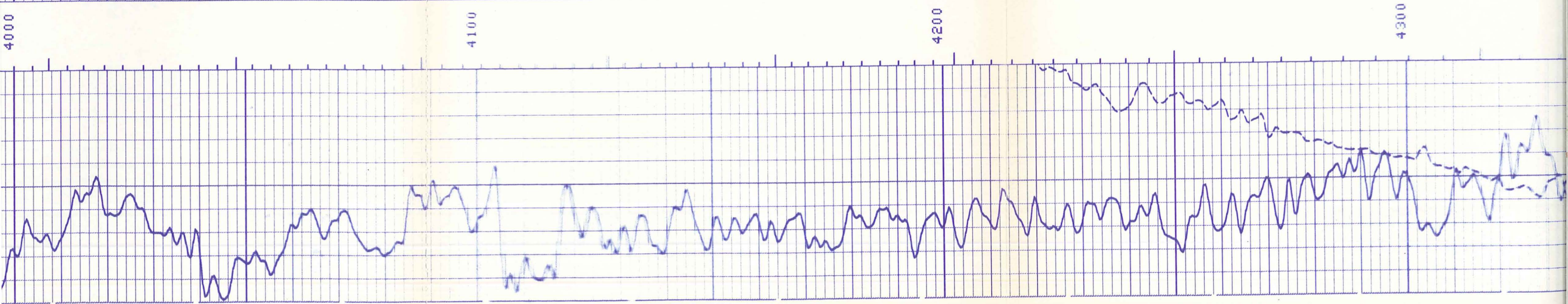
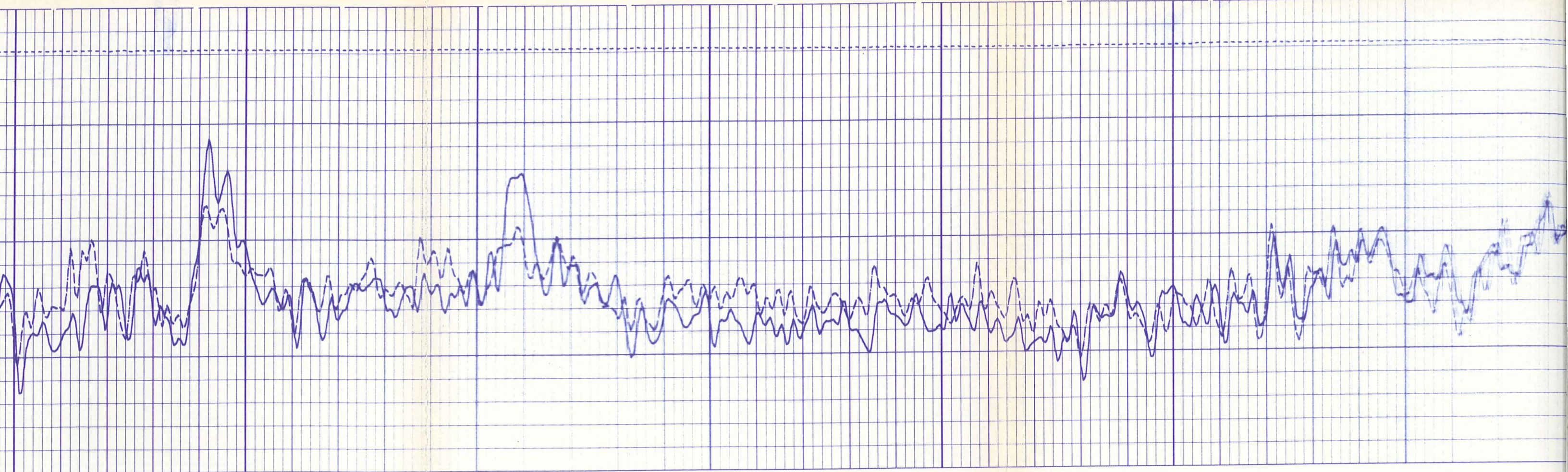


3800

3900

4000



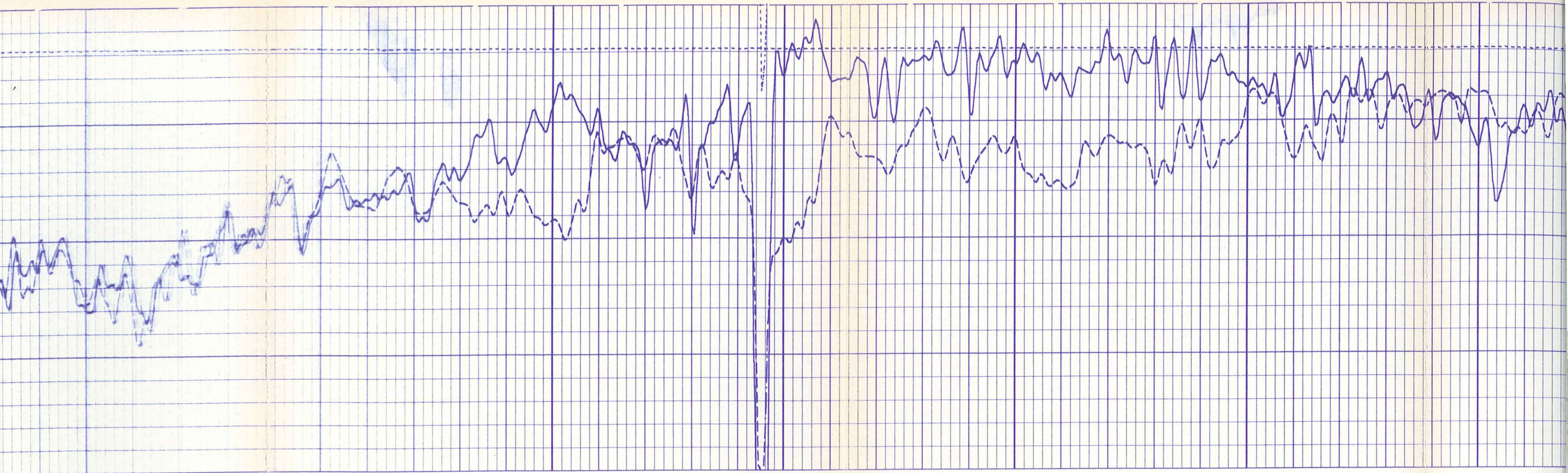


4000

4100

4200

4300



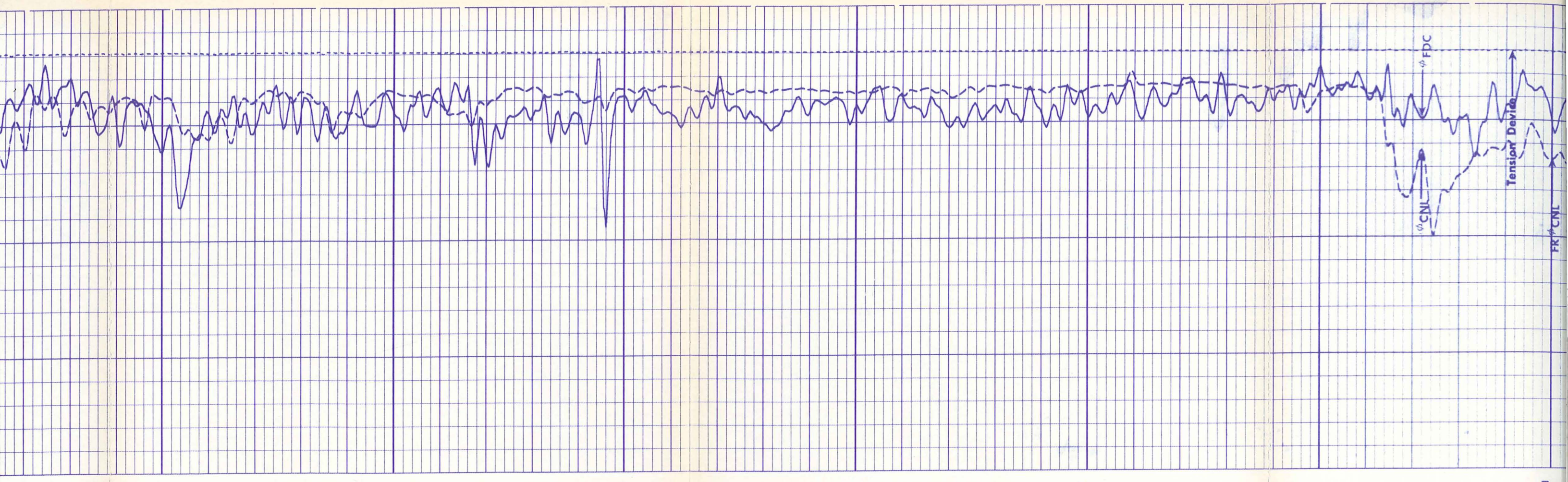
4300

4400

4500

4600



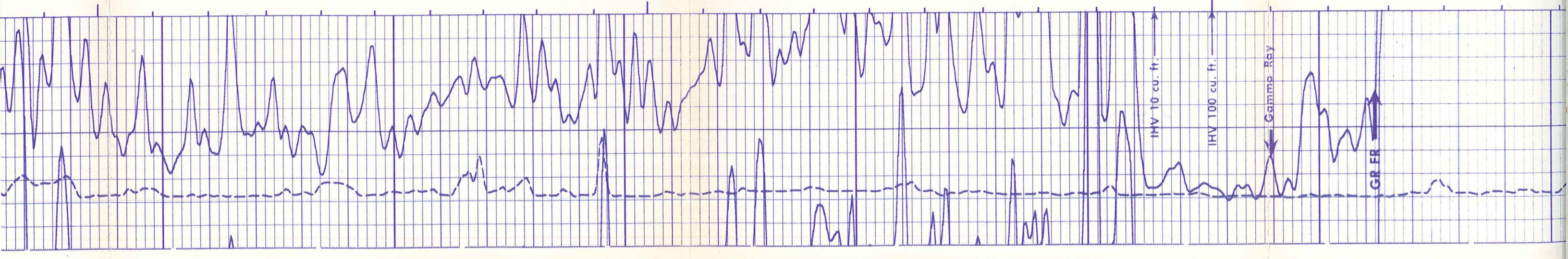


4600

4700

4800

4900

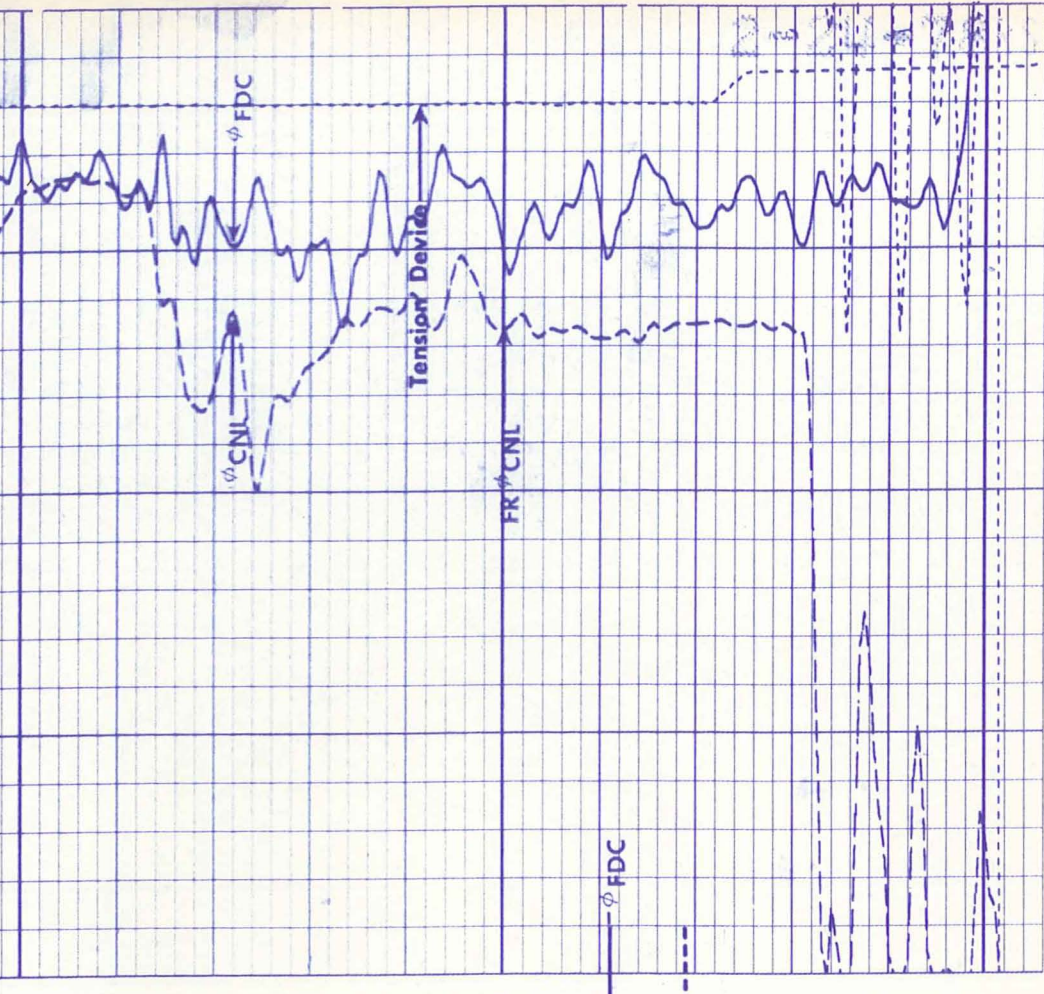
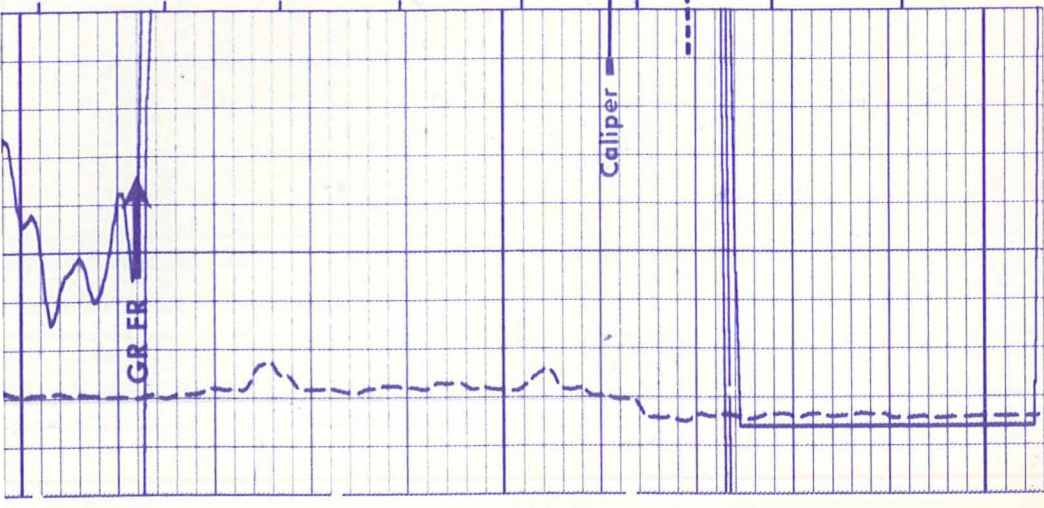


IHV 10 cu. ft.

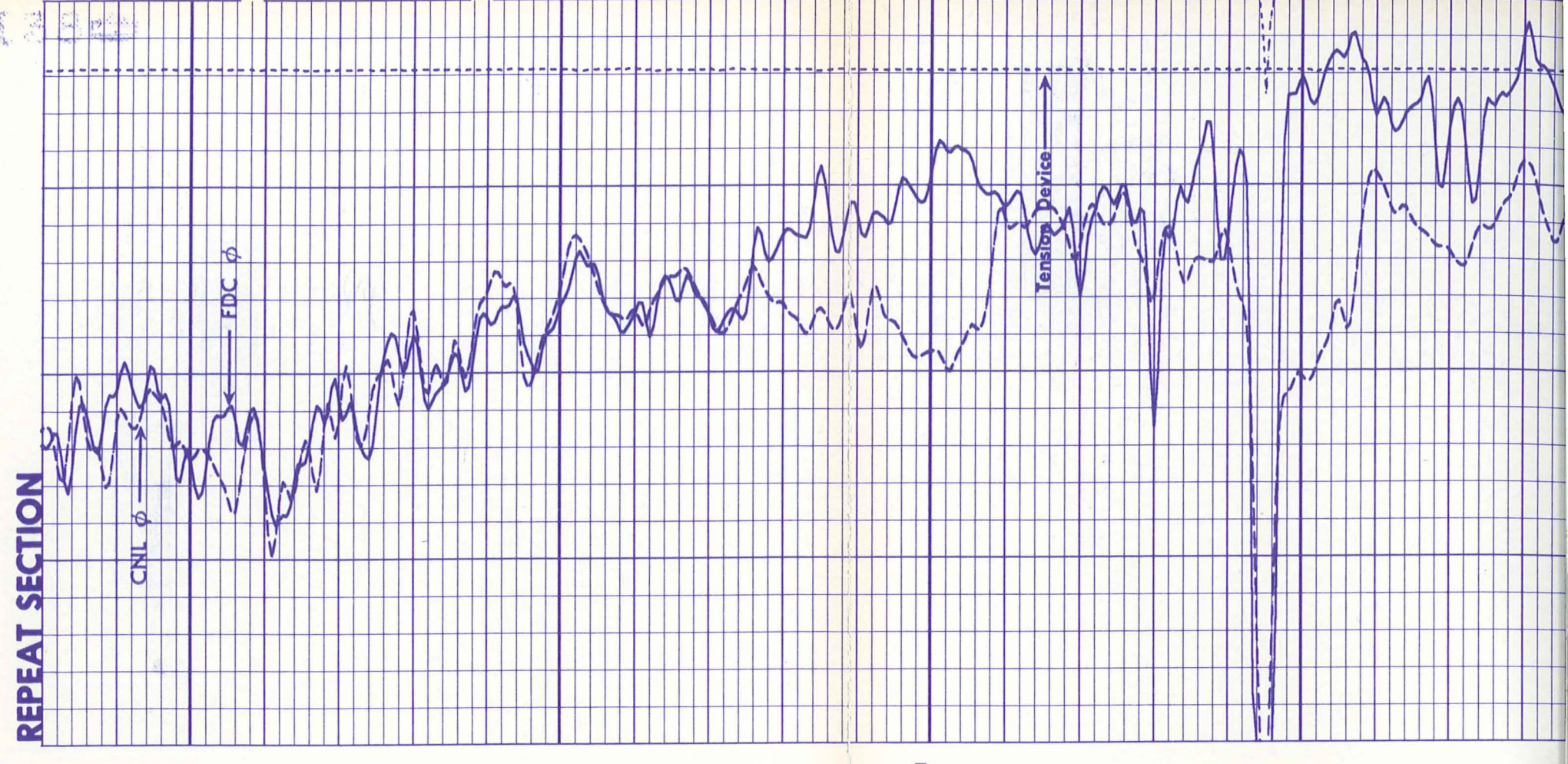
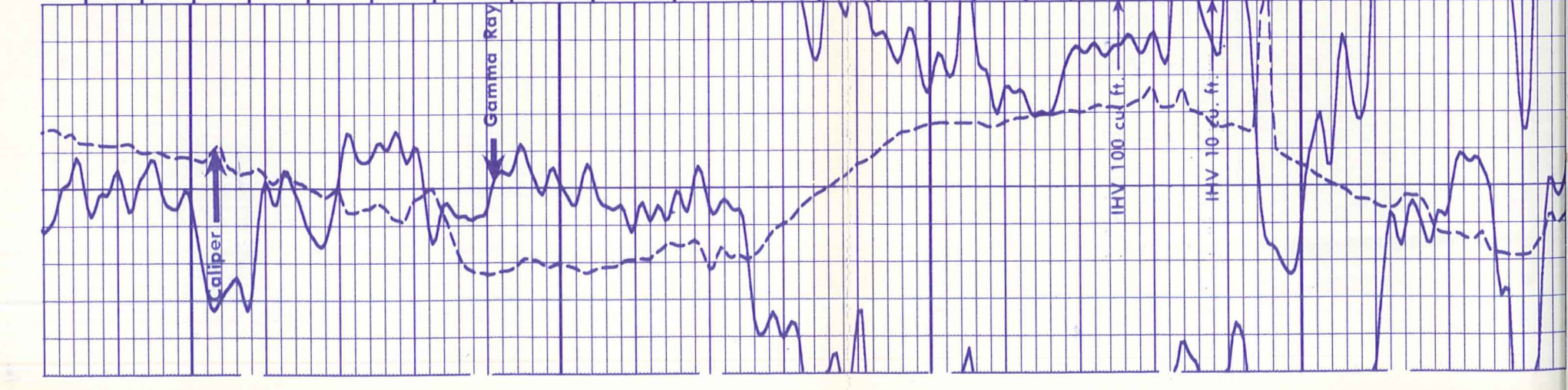
IHV 100 cu. ft.

Gamma Ray

GR ER



665222



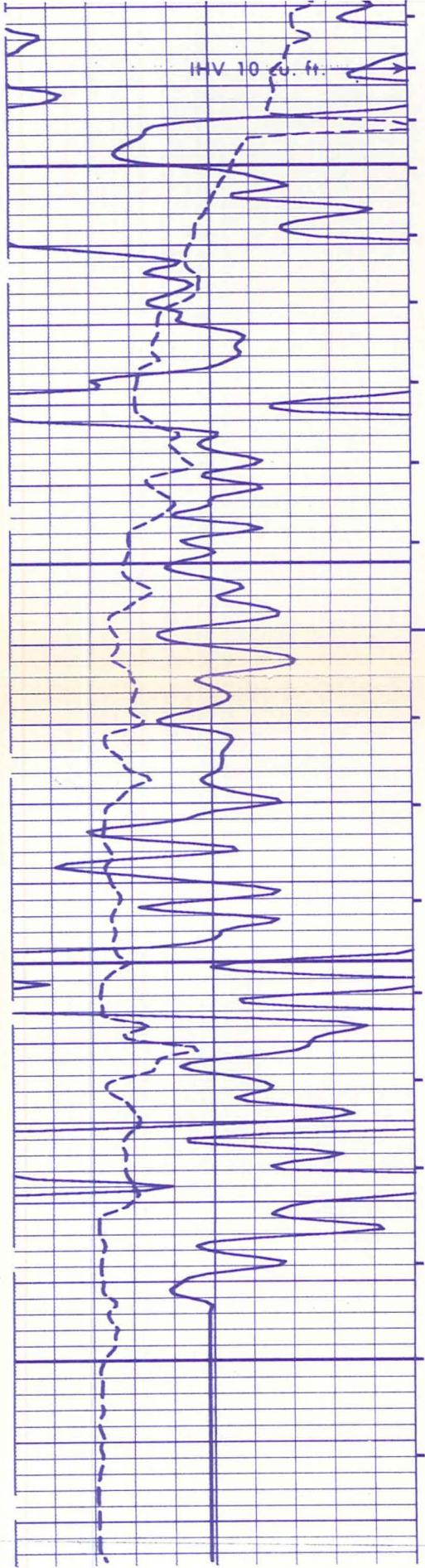
REPEAT SECTION

1005 2 2 1 1

4900

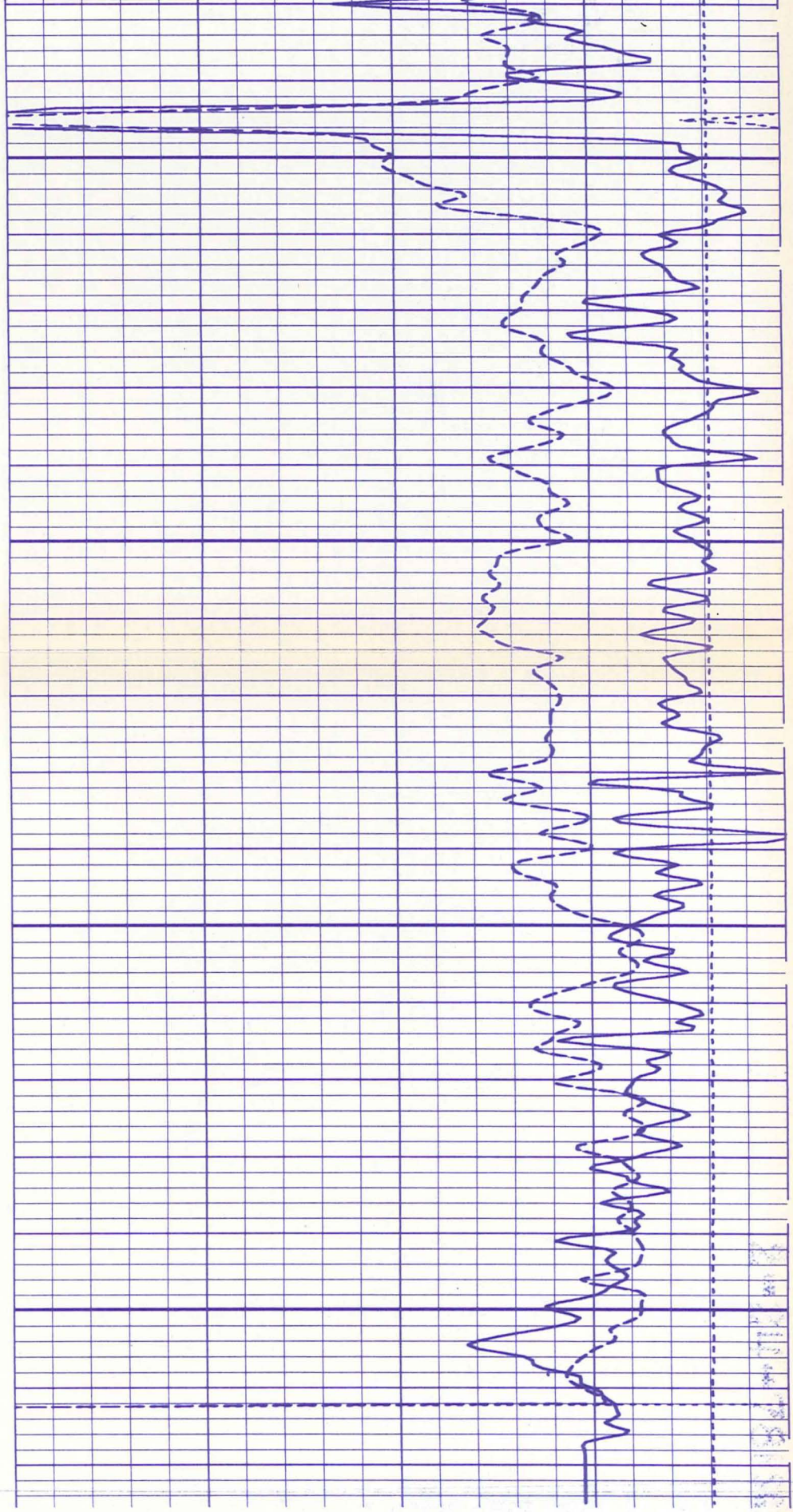
4300

4400



4500

4600



CALI(IN)	
10.00	20.00
GR (GAPI)	
0.0	150.0

TENS(LB)	
10000.	0.0
NPHI()	
1.000	0.5000
DPHI()	
0.5000	-0.100
NPHI()	
0.5000	-0.100

7
7

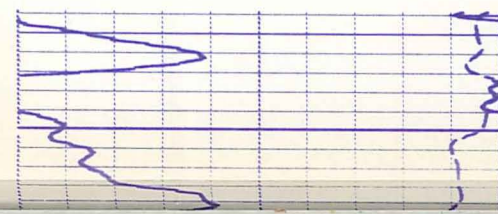
4
4
4
9
9
9

CALI(IN)	
10.00	20.00
GR (GAPI)	
0.0	400.0

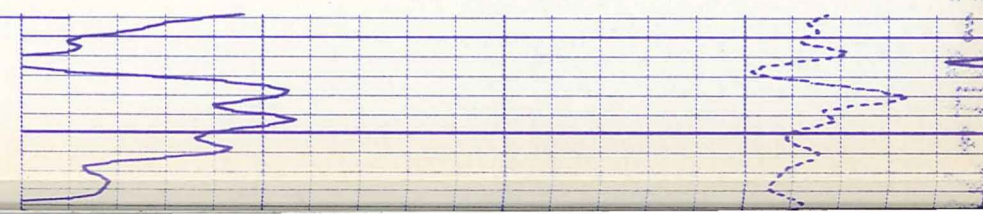
DRHO(G/C3)	
-0.250	0.2500
RHOB(G/C3)	
2.000	3.000

9
9
9
9
9
6
6
6
6
6
6
6

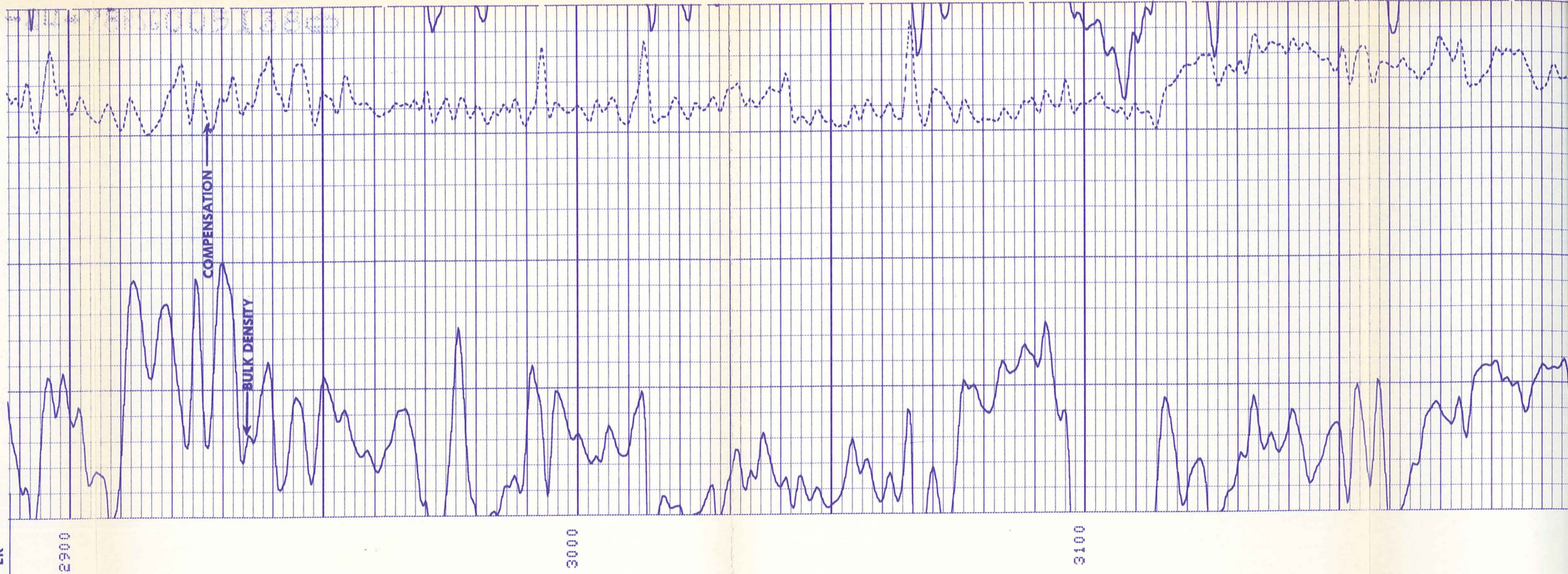
LR



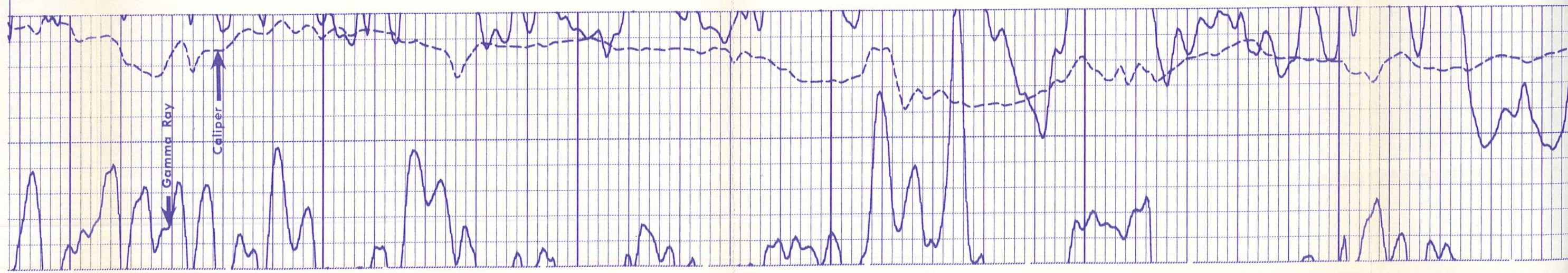
2900

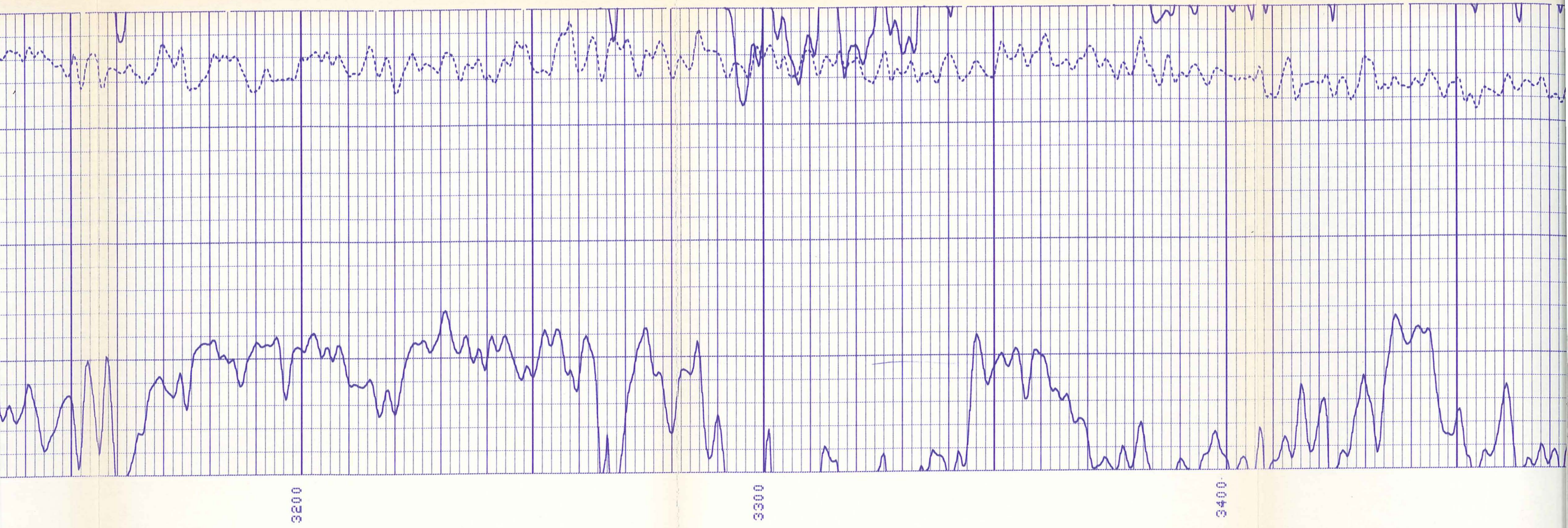


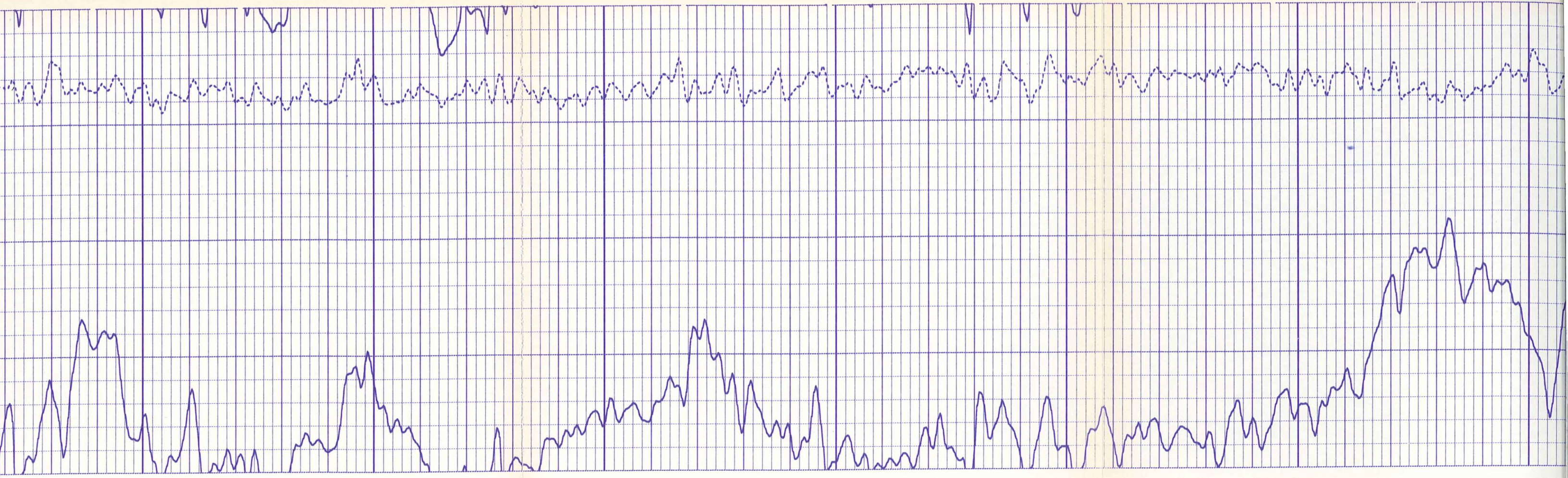
2-10-71 11:00 1380



LR
6
6
6
6
6
6
6



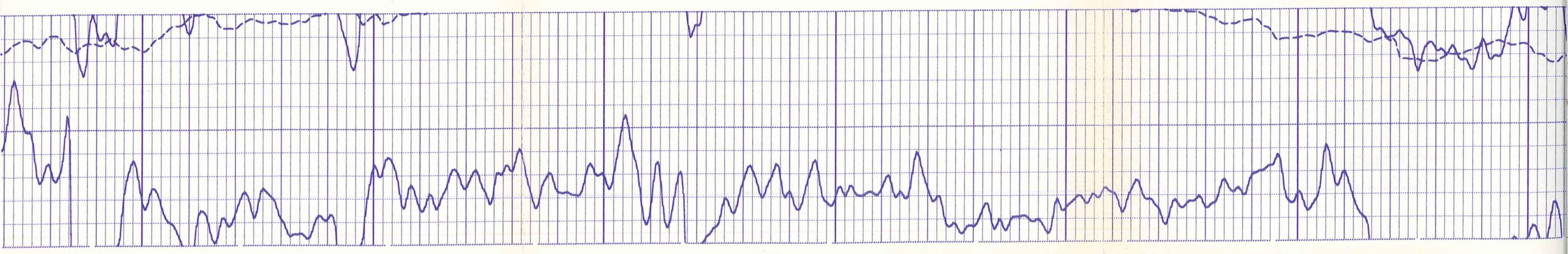


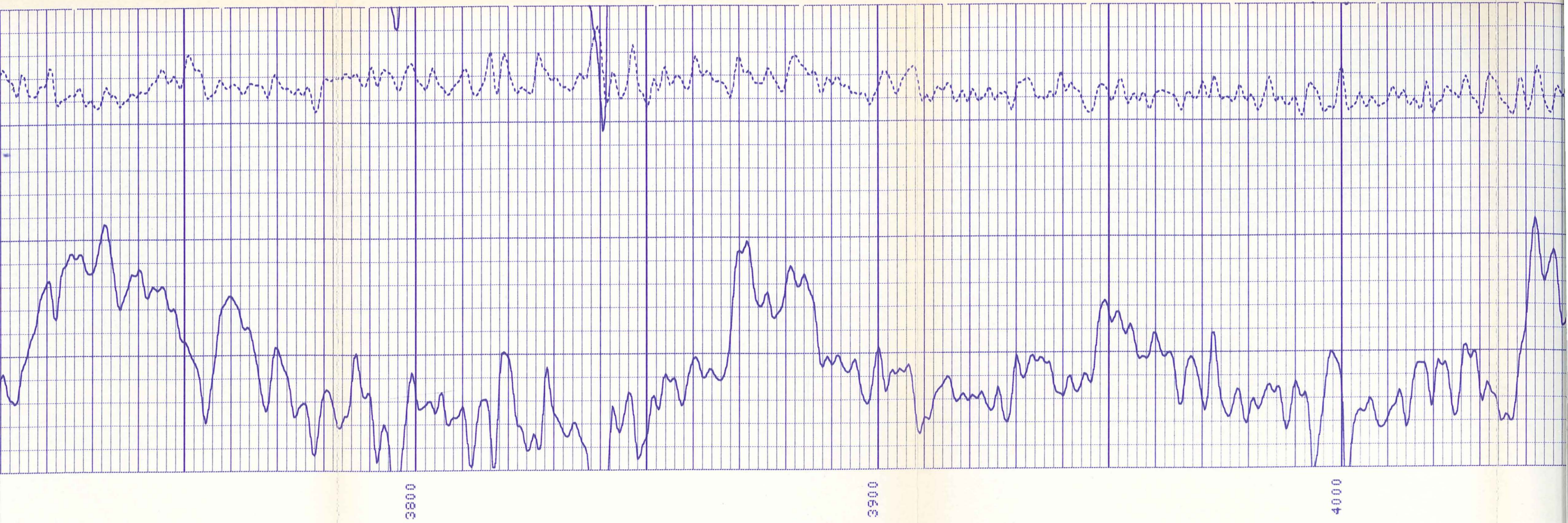


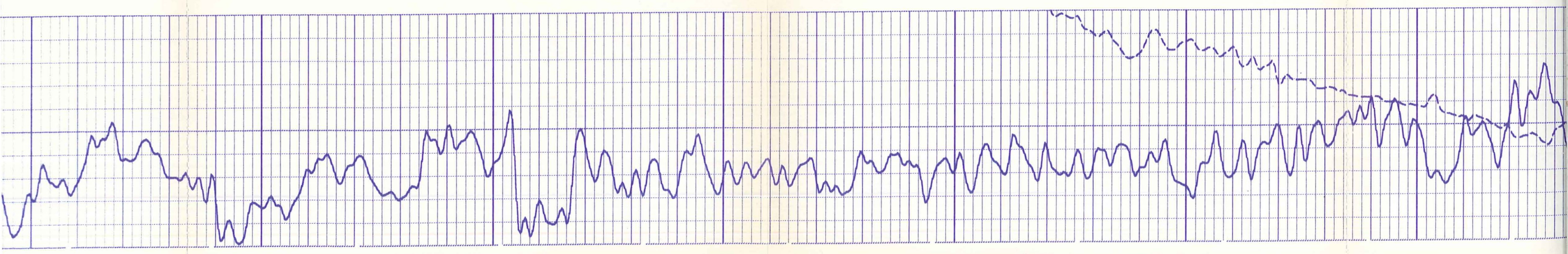
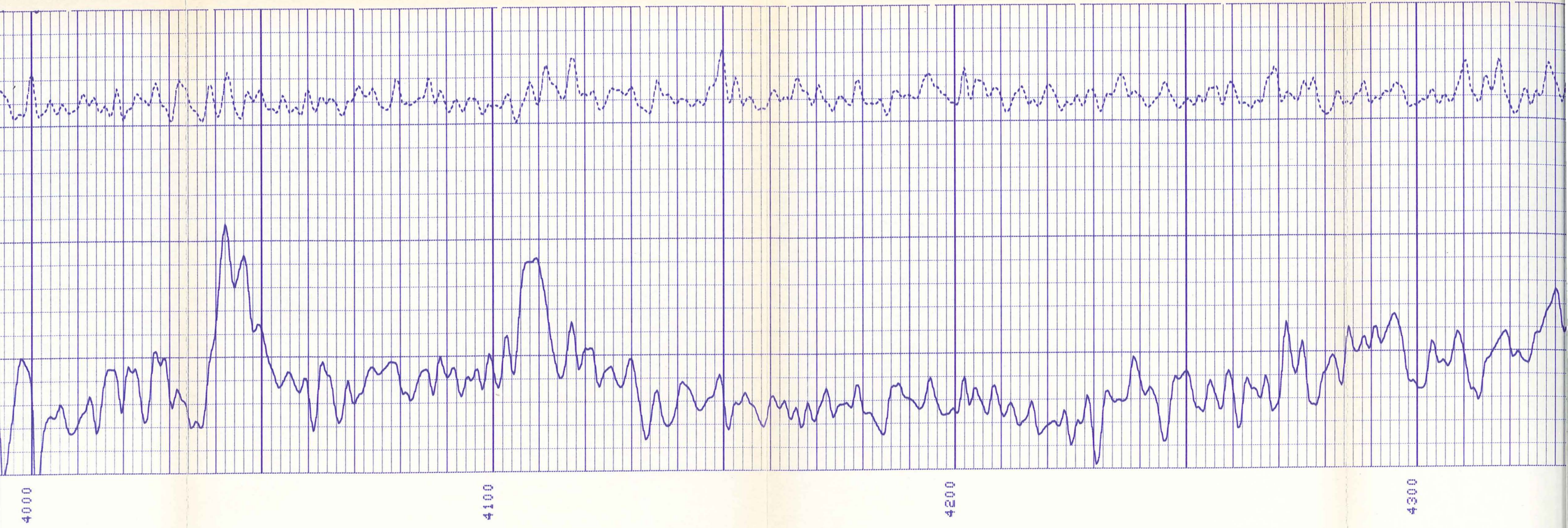
3500

3600

3700





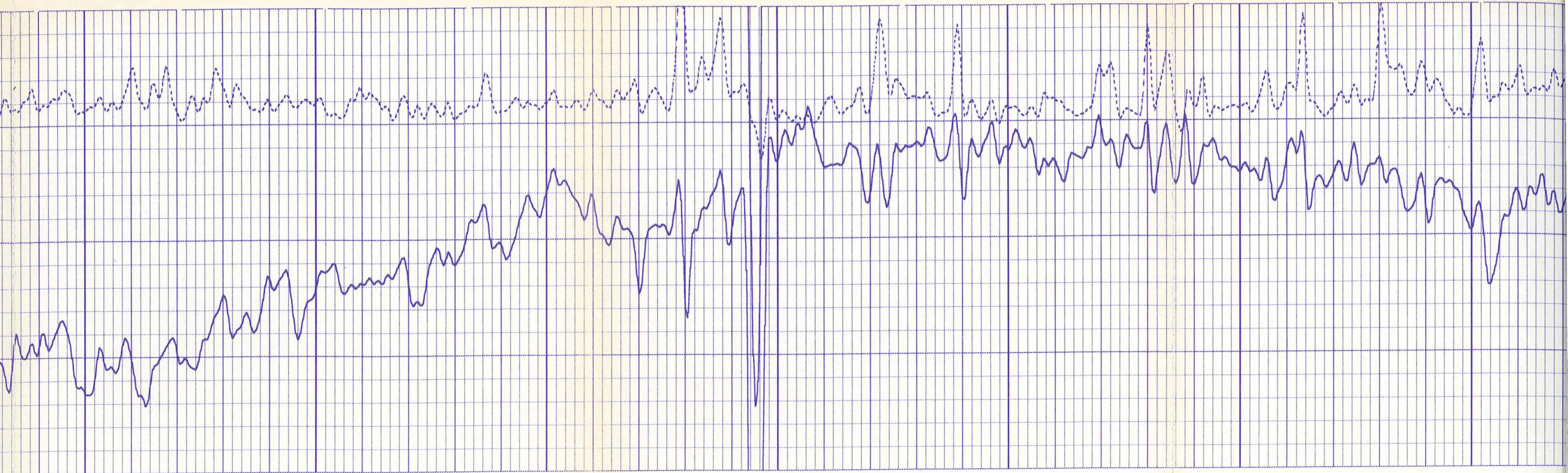


4000

4100

4200

4300



4300

4400

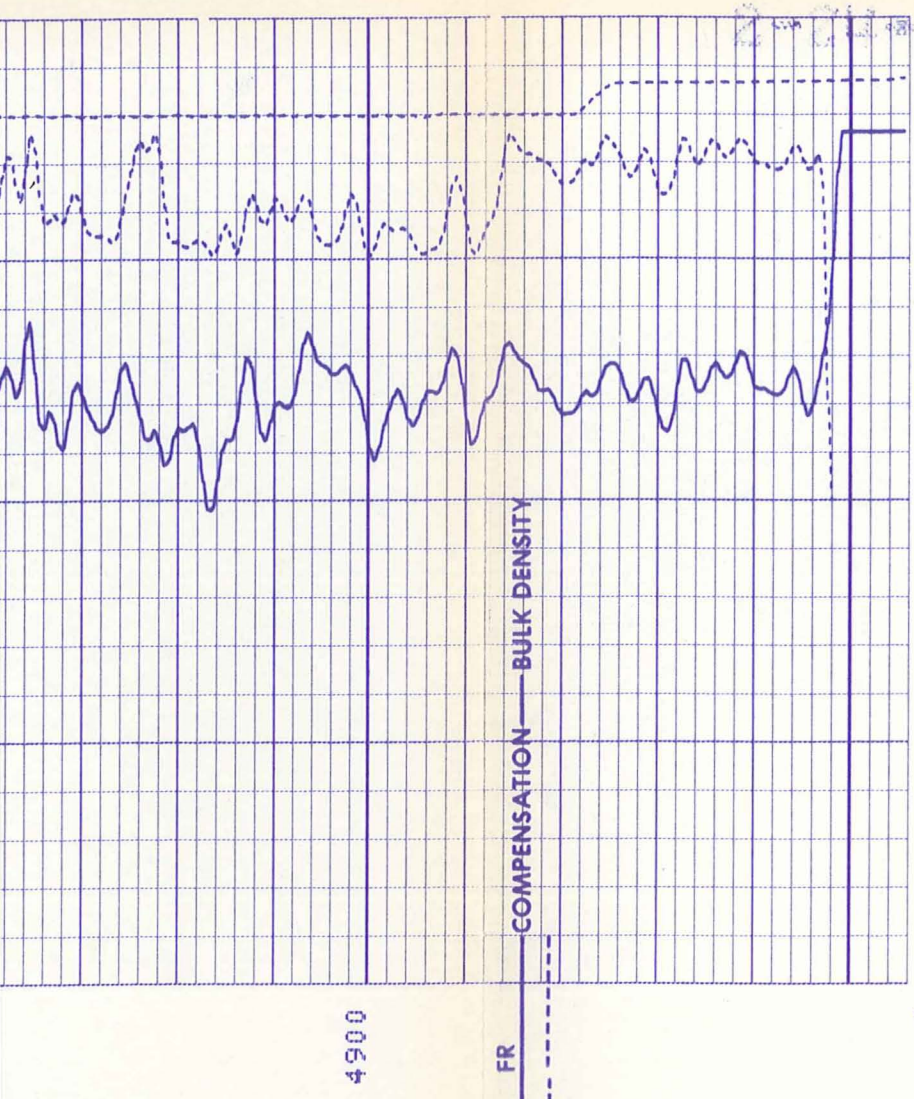
4500

4600





2-01-78 13005 138



666666 5222

