

G 102700-2

**Schlumberger**

**TEMPERATURE LOG**

Company: *Anschutz Corporation*

Well Name: *W. 100-10-13*

Location: *W. 100-10-13*

Operator: *W. 100-10-13*

Log No.: *8-17-79*

Well Depth: *2750* ft. (Shallowest) to *2750* ft. (Deepest)

Temperature: *111.5* at *111.5* ft. (Shallowest) to *111.5* at *111.5* ft. (Deepest)

Remarks: *Flight log*

Reproduced By  
**Electrical Log Services**  
 Houston, Texas 77001



REFERENCE K 1676X

COMPLETION RECORD

*X-Log*

MADE FROM BEST COPY AVAILABLE

SPUD DATE

COMP DATE

DST RECORD

API NO.

CASING RECORD

PERFORATING RECORD

ACID FRAC SHOT

I.P.

GOR GR

T.P. C.P.

REMARKS:

REPRODUCTION FOR RESALE PROHIBITED

REMARKS: *WOLA 777K*

*WOLA 780A*

*WOLA 780B*

*WOLA 780C*

*WOLA 780D*

*WOLA 780E*

*WOLA 780F*

*WOLA 780G*

*WOLA 780H*

*WOLA 780I*

*WOLA 780J*

*WOLA 780K*

*WOLA 780L*

*WOLA 780M*

*WOLA 780N*

*WOLA 780O*

*WOLA 780P*

*WOLA 780Q*

*WOLA 780R*

*WOLA 780S*

*WOLA 780T*

*WOLA 780U*

*WOLA 780V*

*WOLA 780W*

*WOLA 780X*

*WOLA 780Y*

*WOLA 780Z*

DATE: \_\_\_\_\_

TYPE OF COMPANY: \_\_\_\_\_

LOG NO.: \_\_\_\_\_

WELL NO.: \_\_\_\_\_

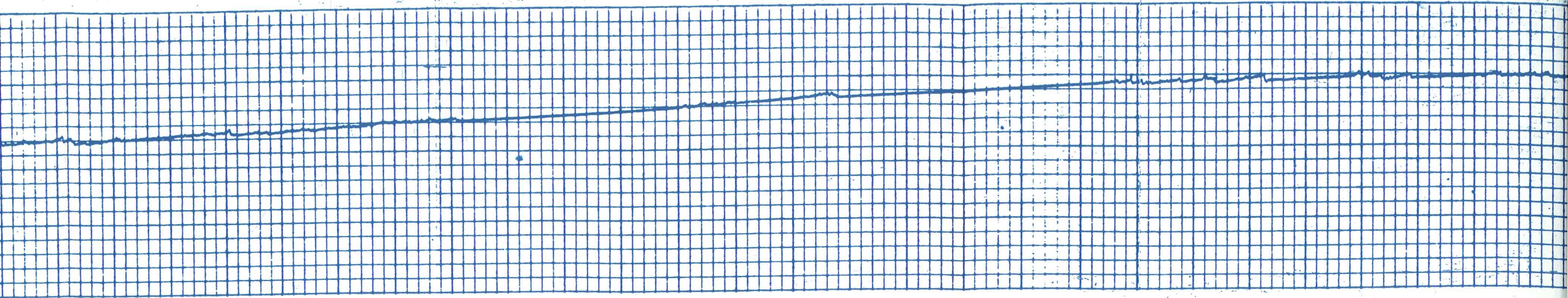
ADDRESS: \_\_\_\_\_

CITY/STATE/ZIP: \_\_\_\_\_









1100

1200

1300

1400

1500

1600

1700

1800

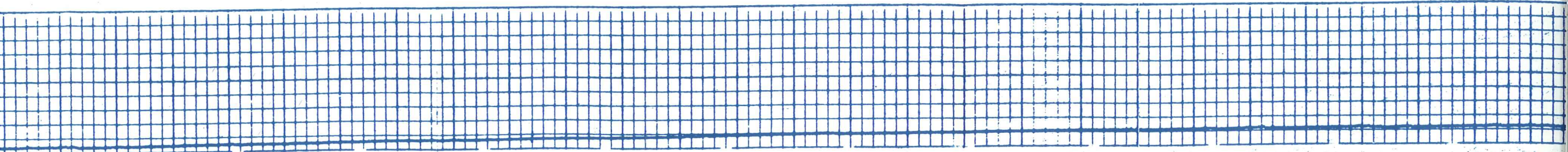
1900

2000

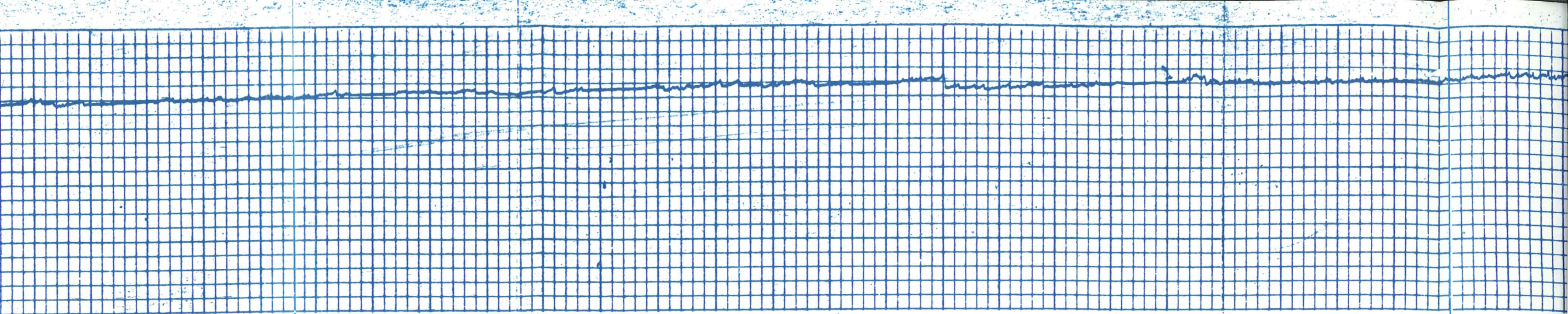
2100

2200

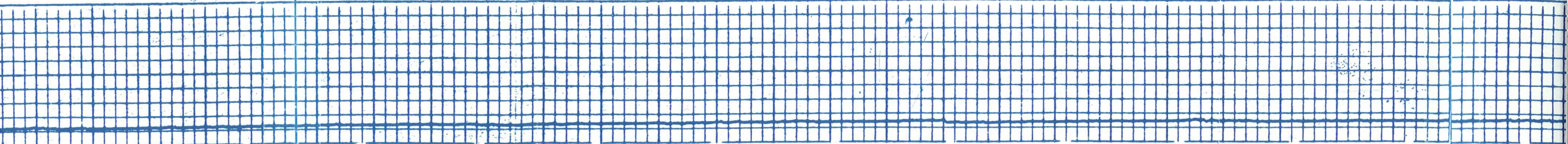
2300



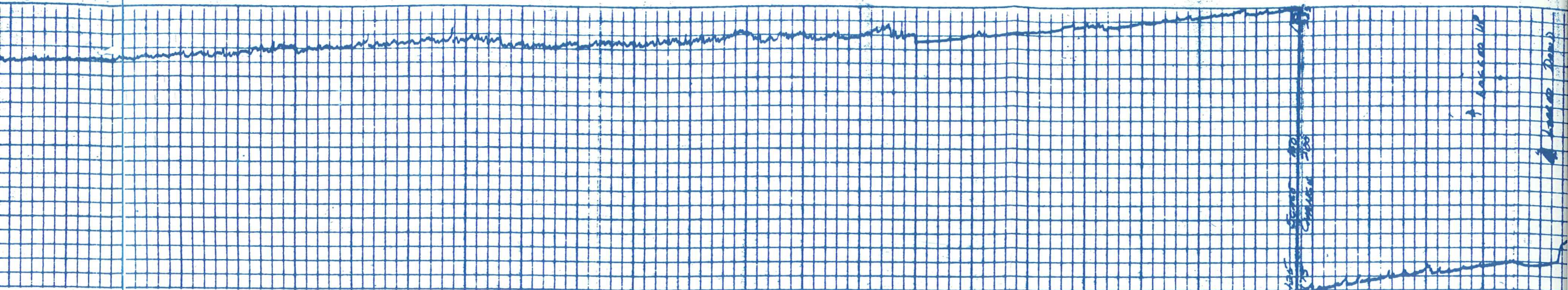




2200 2300 2400 2500 2600 2700 2800 2900 3000 3100 3200 3300 3400 3500







3400

3500

3600

3700

3800

3900

4000

4100

4200

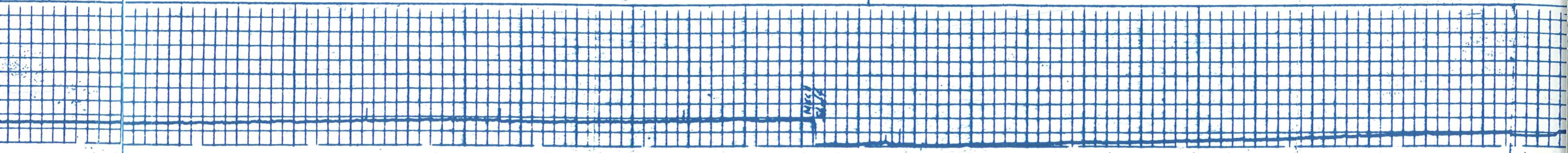
4300

4400

4500

4600

4700

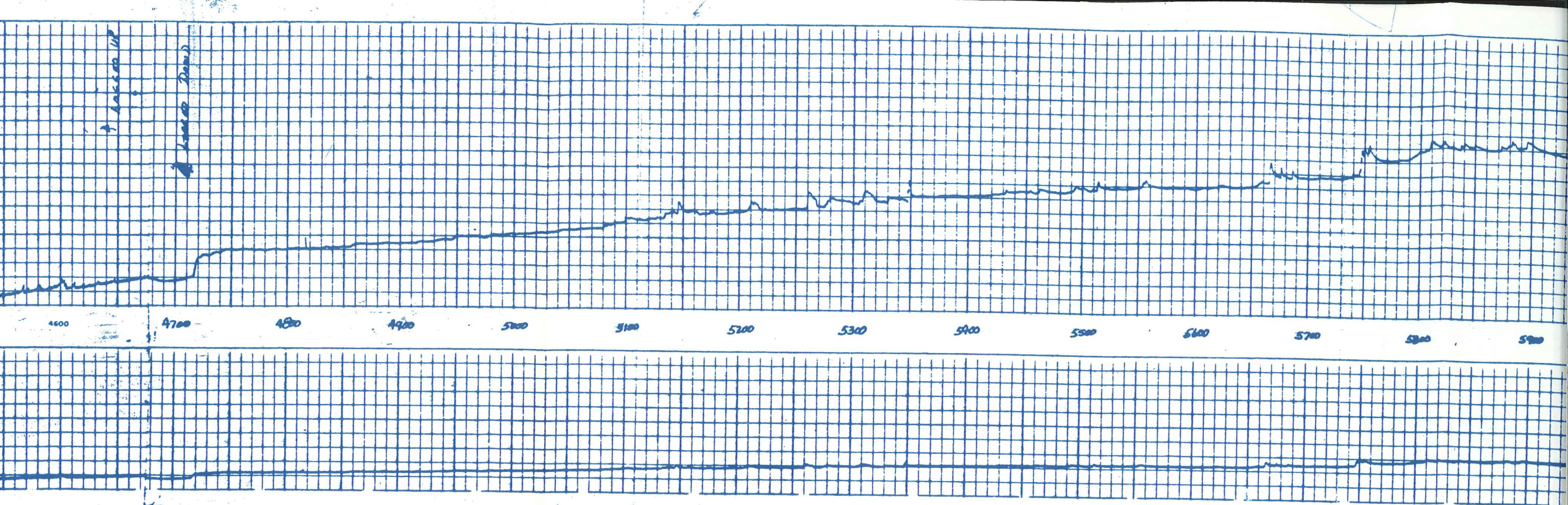


1.5.5

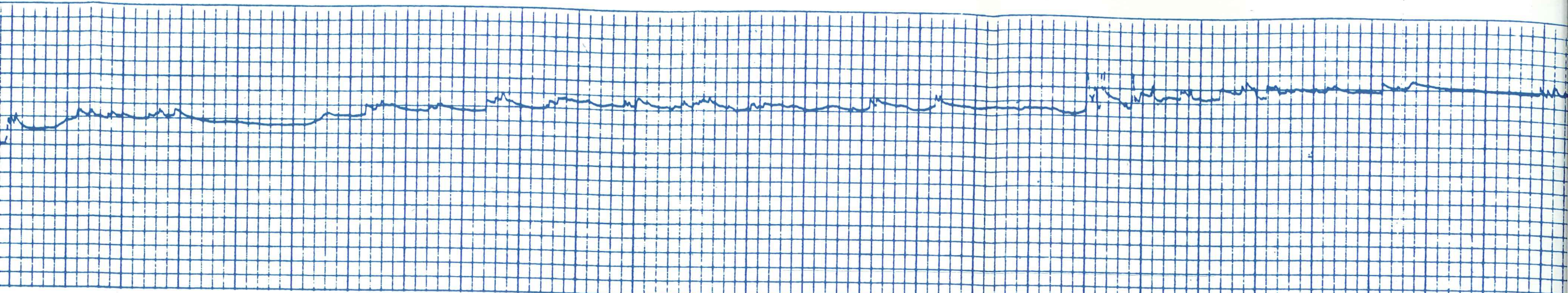
1.5.5

1.5.5

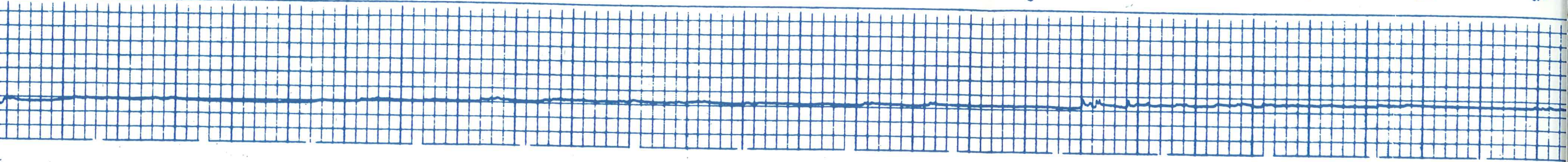








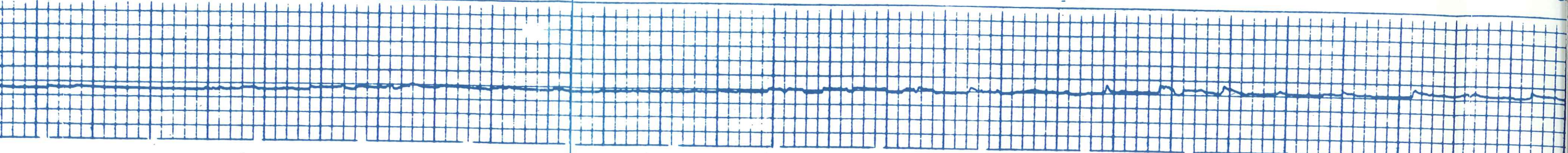
5800 5900 6000 6100 6200 6300 6400 6500 6600 6700 6800 6900 7000 7100



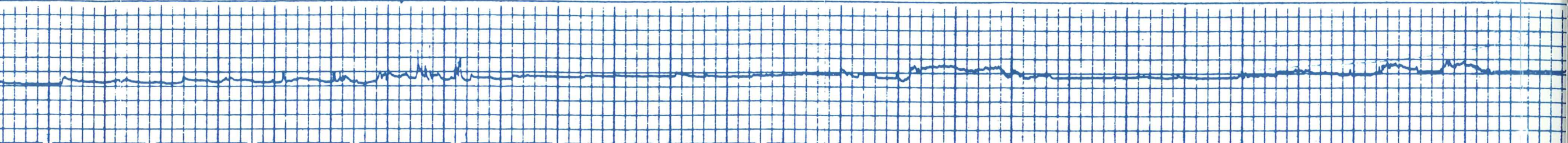
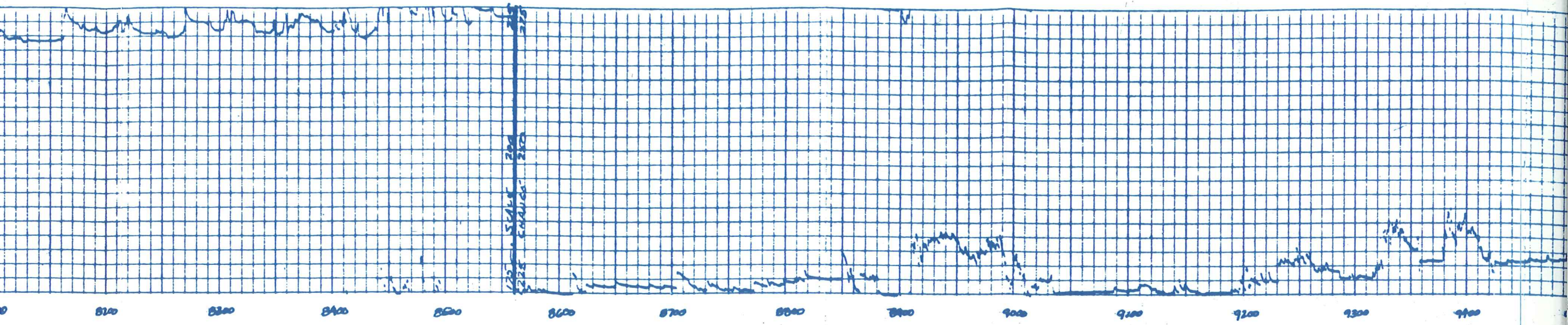




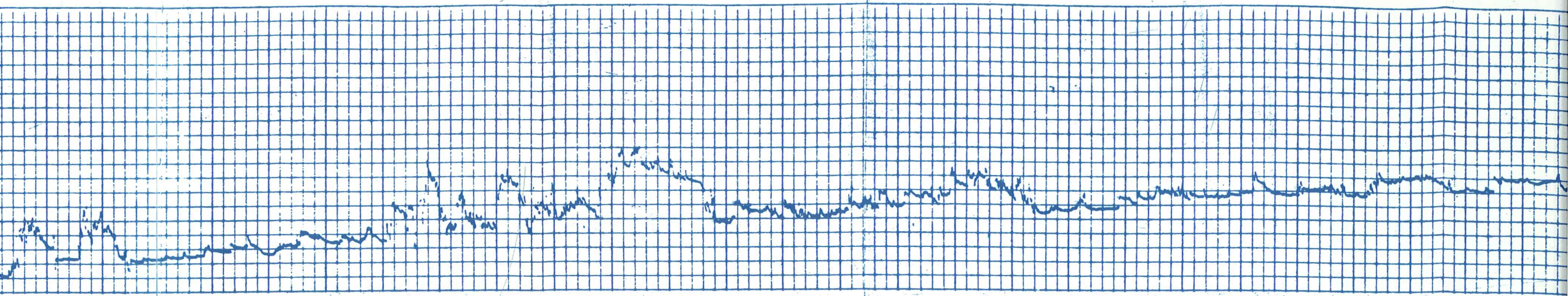
700 710 720 730 740 750 760 770 780 790 800 810 820



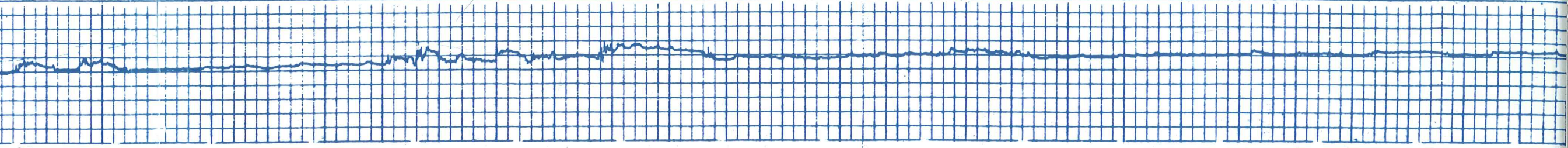




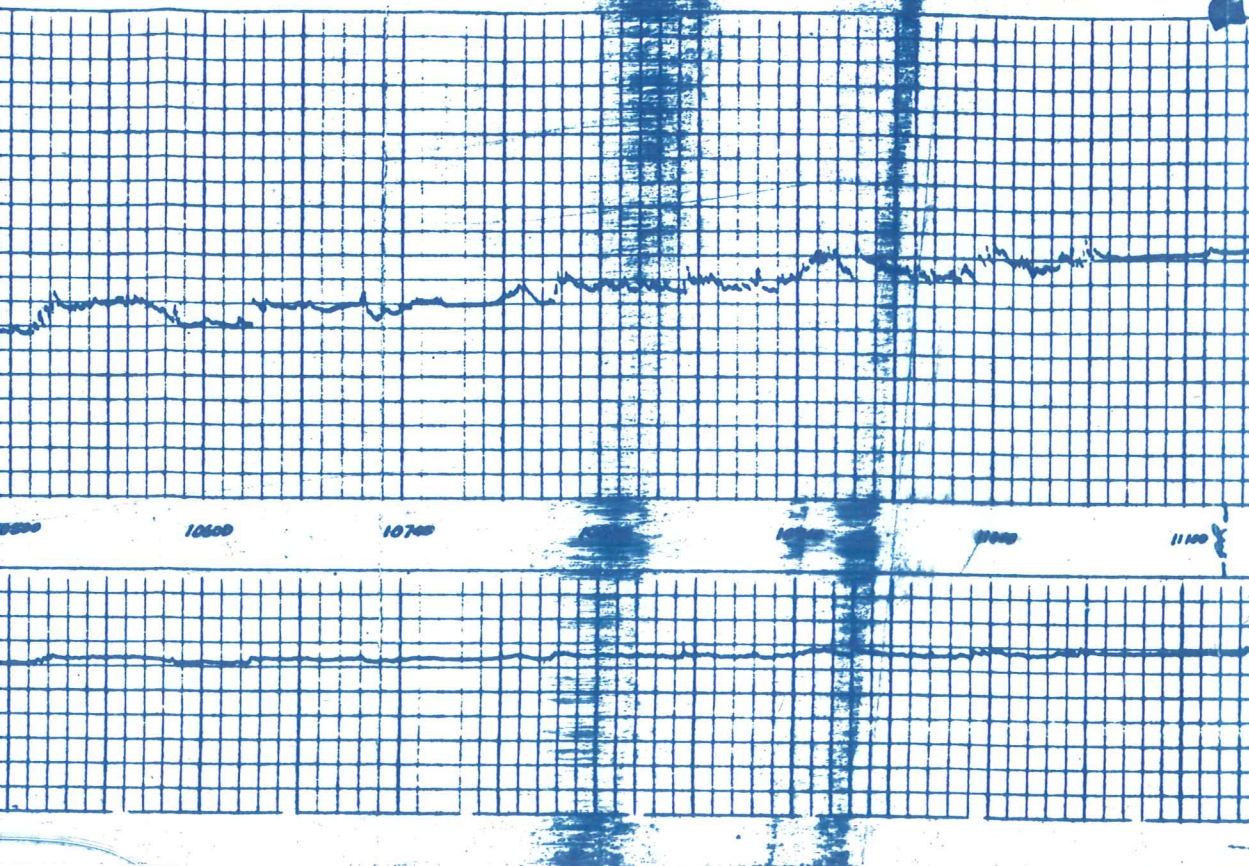




9900 9500 9600 9700 9800 9900 10000 10100 10200 10300 10400 10500







## TEMPERATURE LOG

---

COMPANY ANSCHUTZ Corporation  
 WELL FEDERAL 60-15 No. 1  
 FIELD WILDCAT  
 COUNTY OWYHEE STATE IDaho

Location SE SW Other Services INC  
Sec. 13 Top 55 App 1E PK-CM  
IRT

Permanent Datum GL Elev 2740 Elev. KB 2751  
 Log Measured From KB K Ft Above Perm Datum DF  
 Drifting Measured From KB G 2740

Date 8-18-74  
 Run No. 3  
 Depth-Driller 11,125'  
 Depth-Logger 11,122'  
 Skin Log Interval 11,122'  
 Top Log Interval 10,920'  
 Casing-Driller 920-4109'  
 Casing-Logger  
 Log Size 7 7/8"  
 Type Fluid in Hole FGM  
 Date 8-6-74  
 pH Fluid Loss 11,625'  
 Sample of Sample RIC

Run to Max Temp 11,122'  
 Run to Min Temp 2,332'  
 Run to Max Temp 2,000'  
 Source Rod M  
 Run to BHT 0.17-235'  
 Calculation Stopped 8-17-0430  
 Logger on Bottom 8-18-0430  
 Max Gas Temp 81.3  
 Temp Location 170 RS  
 Measured by PARIS  
 Witnessed by MMH

SCALE CHANGES  
 Scale Up Hole 175-225-235-245  
 Type Log TEMP  
 Temp 8040

REMARKS  
Lower Down  
Temp. from Main Log by  
Thermometer - 102

EQUIPMENT DATA  
 PPU-A 777  
 LIU-B 133  
 PAH-A 807  
 HTS-B 797

CALIBRATION DATA  
 BGC CPS  
 Source CPS  
 CR

The well name, location and borehole reference data were furnished by the customer.

TEMPERATURE ° FA	225 200 175
REDUCED SENSITIVITY TEMPERATURE	225 200 175

SUCCESS →



THIS INSTRUMENT IS CALIBRATED IN ACCORDANCE WITH THE NATIONAL BUREAU OF STANDARDS (NBS) MONITORING AND EVALUATION PROGRAM. THE CALIBRATION IS VALID FOR THE PERIOD OF 12 MONTHS FROM THE DATE OF CALIBRATION. THE CALIBRATION IS VALID FOR THE PERIOD OF 12 MONTHS FROM THE DATE OF CALIBRATION. THE CALIBRATION IS VALID FOR THE PERIOD OF 12 MONTHS FROM THE DATE OF CALIBRATION.

REDUCED SENSITIVITY  
TEMPERATURE

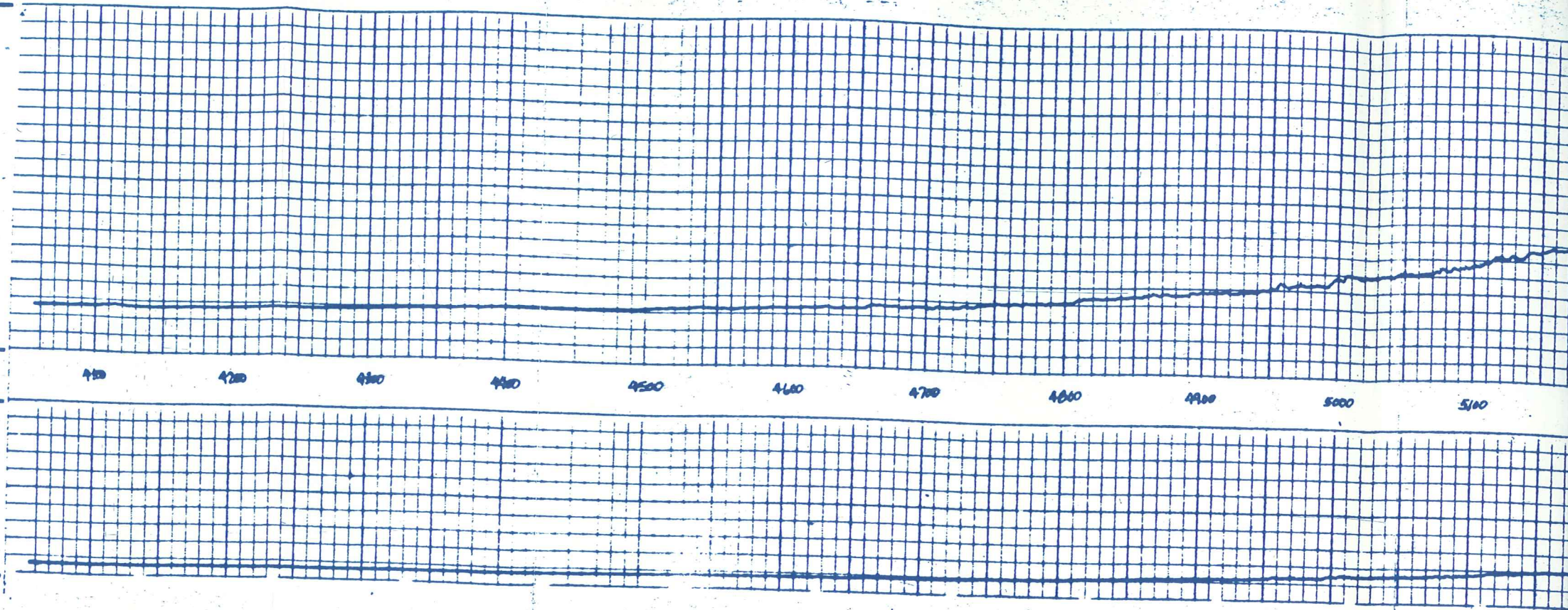
TEMPERATURE  
° FA

INCREASE →

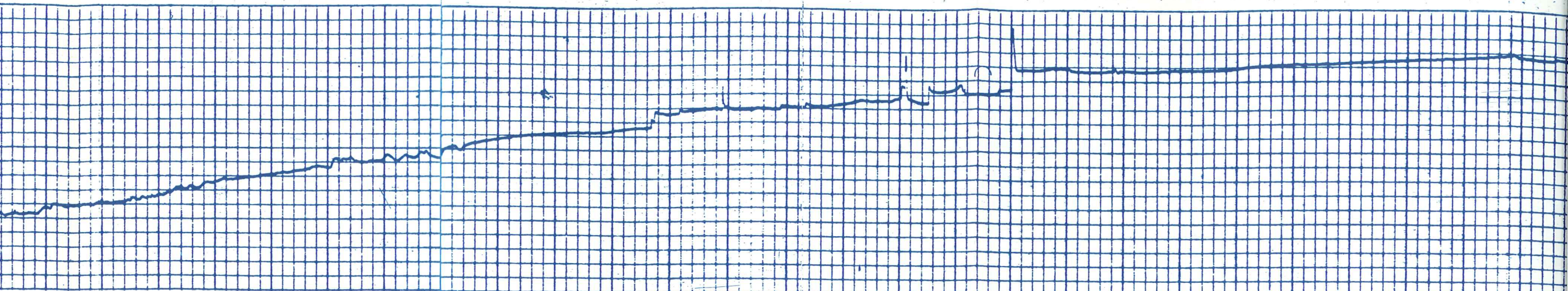
175

200

225







5000

5100

5200

5300

5400

5500

5600

5700

5800

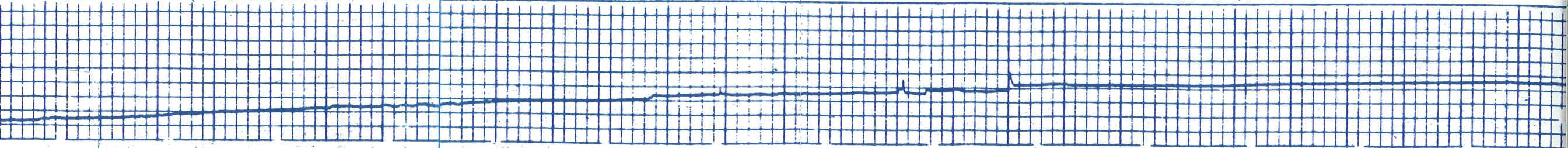
5900

6000

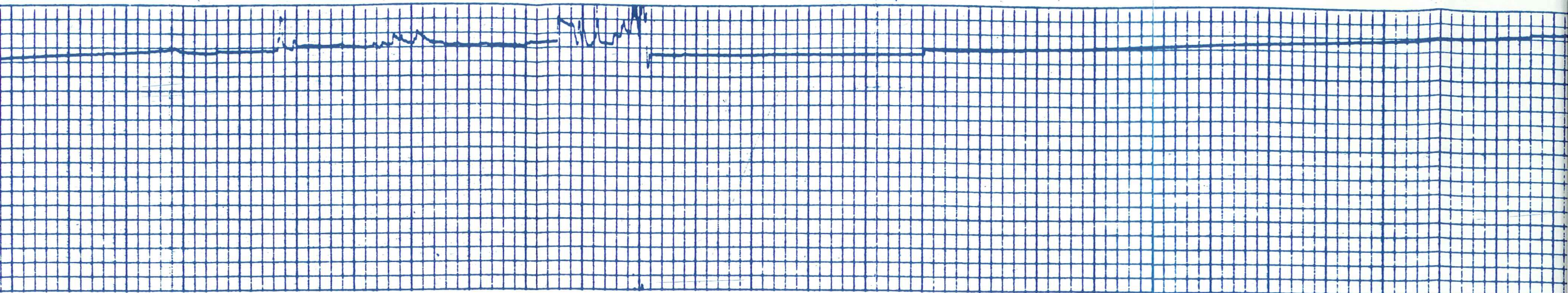
6100

6200

6300







6200

6300

6400

6500

6600

6700

6800

6900

7000

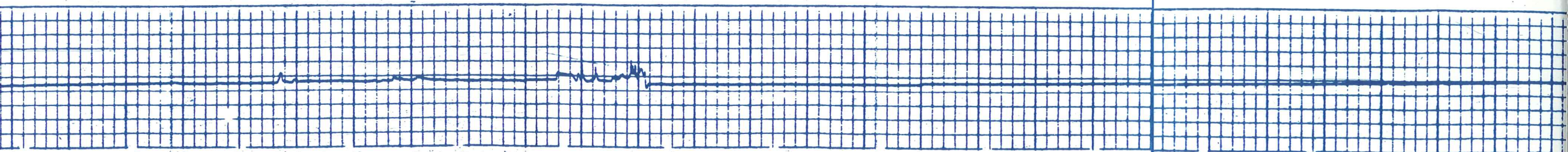
7100

7200

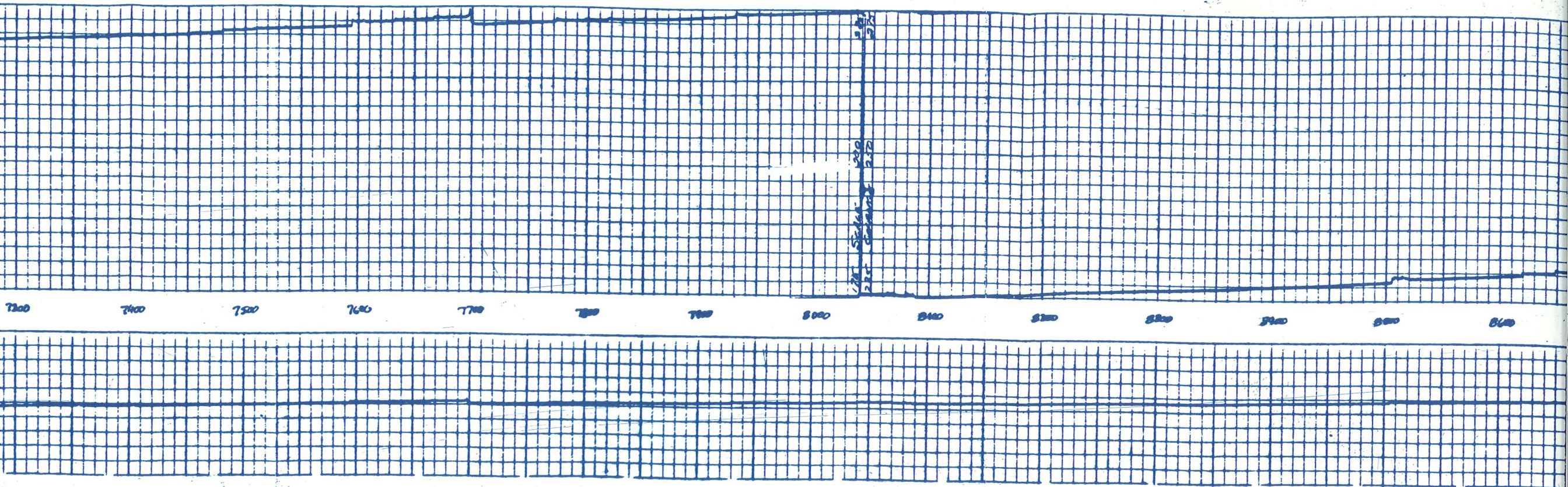
7300

7400

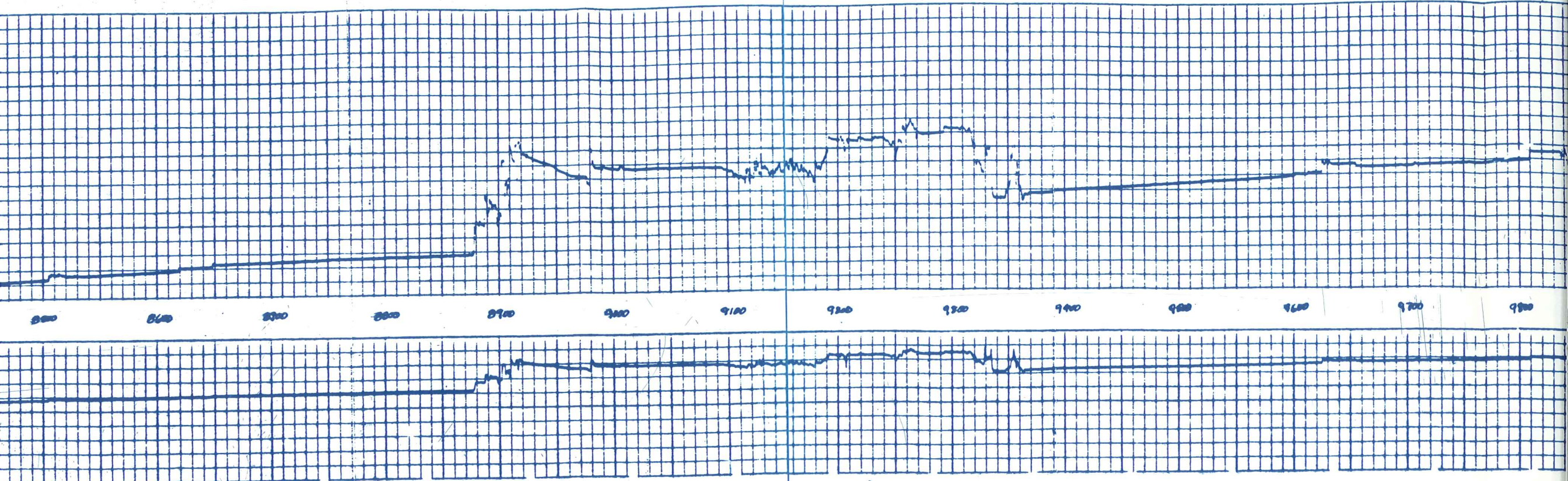
7500



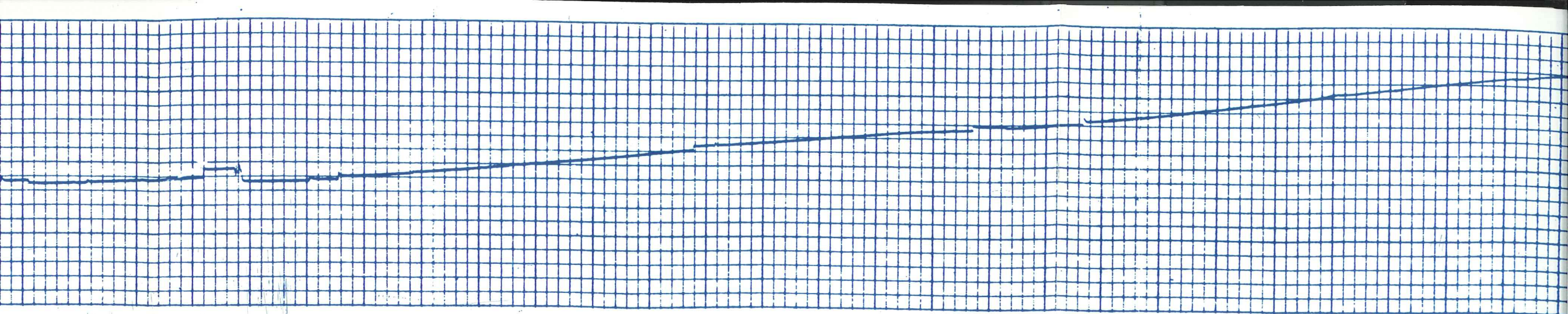












9700

9800

9900

10000

10100

10200

10300

10400

10500

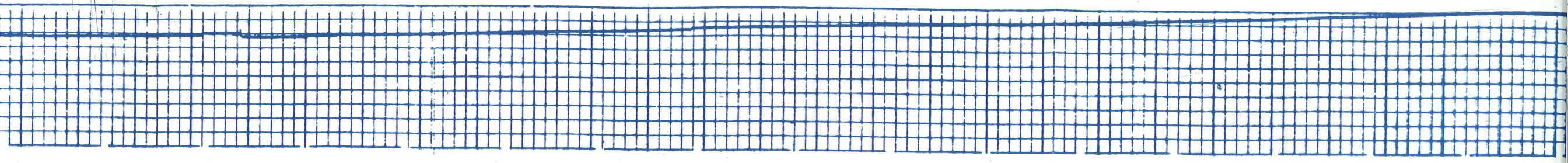
10600

10700

10800

10900

11000





Schlumberger TEMPERATURE LOG

COMPANY AISCHEWITZ Corp.  
 WELL FEDERAL 60-13 No. 1  
 FIELD WILDCAT  
 COUNTY OWYHEE STATE IDAHO

Location SE SW  
 Sec 13 Twp 55 Rge 15

Permanent Datum GL Elev. 2240 Elev. 22751  
 Log Measured From RB 11 ft Above Perm. Datum  
 Drilling Measured From RB D.I. GL 2740

Date	<u>08-17-74</u>			
Run No.	<u>2</u>			
Depth - Outer	<u>11,125</u>			
Depth - Logger	<u>11,125</u>			
Time Log Interval	<u>11,125</u>			
Top Log Interval	<u>4090</u>			
Casing - Outer	<u>930 2 1/2"</u>			
Casing - Logger				
Tool Size				
Type Plug in Hole	<u>TIGHT HOLES</u>			
Open Water				
Loss				
Loss				
Volume of Sample	<u>0.7</u>			
Run 1 Mean Temp.	<u>1.58</u>	<u>72</u>		
Run 2 Mean Temp.	<u>2.82</u>	<u>65</u>		
Run 3 Mean Temp.	<u>2.00</u>	<u>127</u>		
Surface Temp.	<u>M. C.</u>			
Log. @ BHT	<u>0.7</u>	<u>285</u>		
Chatterton Stopped	<u>8:17</u>	<u>0030</u>		
Logger on Bottom	<u>8:19</u>	<u>1900</u>		
Time on Temp.	<u>208</u>			
Equip. Location	<u>770</u>	<u>85</u>		
Recorded By	<u>PARKS</u>			
Witnessed By	<u>MANSON</u>			

SCALE CHANGES  
 Log Log English  
 Feet Up Well  
 Feet Down Well  
 Temp. 100-200 125-225  
300 200-225 200-250  
300 200-250 200-300

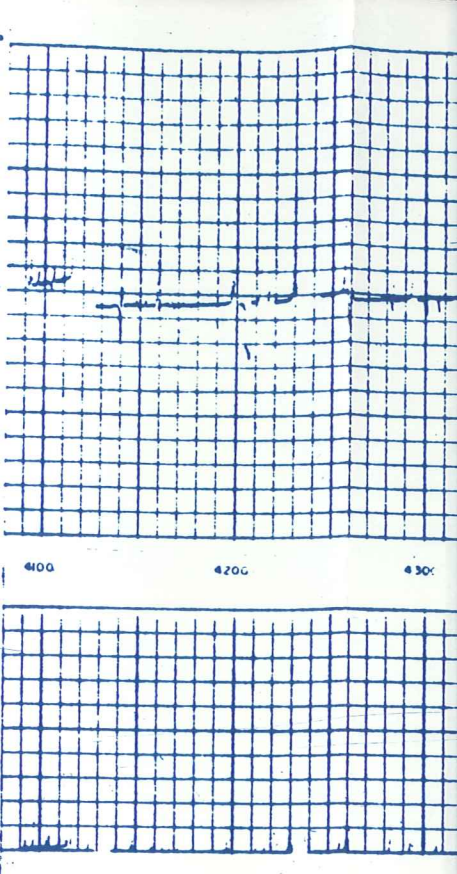
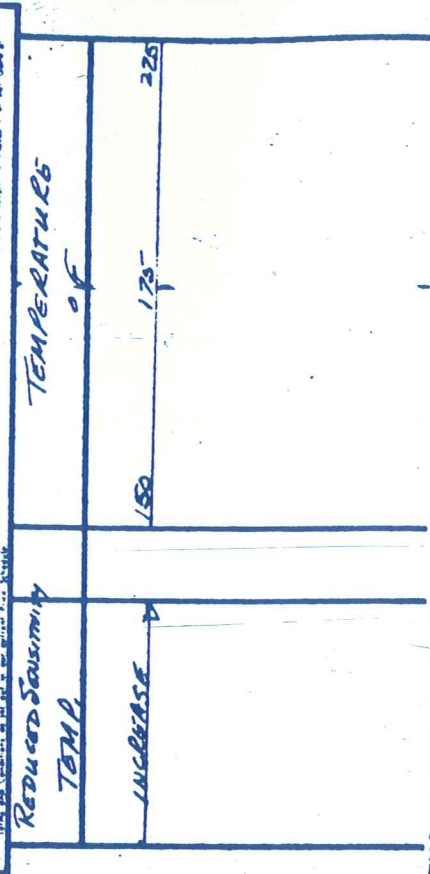
REMARKS  
 COULD NOT LOC  
 WIGAN TUBE TO READ  
 SELLING UP Y. TUB  
 HILLING OFFICALLY  
 LOGGED UP.  
 APPROXIMATELY  
 67 HOURS SINCE  
 CIRCULATION  
 Max. Reading Thermo. 268  
 INSTRUMENT. 200. Noise

FIELD NAME  
 The well name, location and borehole reference data were furnished by the formation.

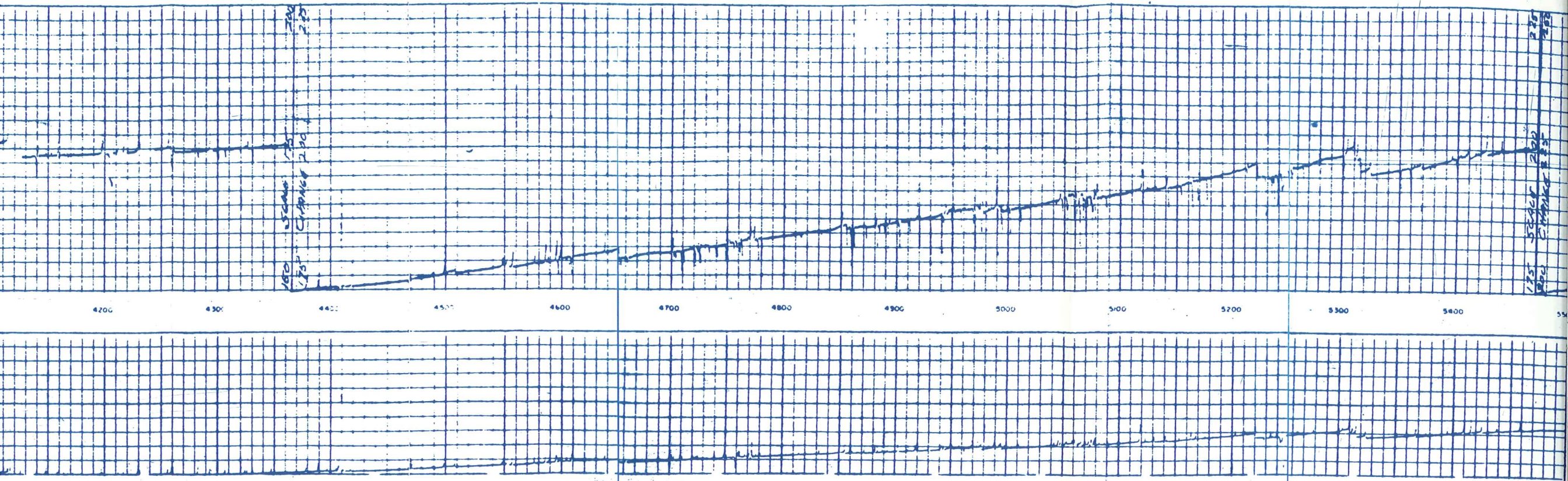
Run No.  
 Service Order No.  
 Log. Serial No.  
 Field Level

EQUIPMENT DATA  
PH-A 777  
PH-B 339  
PH-A 807  
HTS-787

CALCULATION DATA  
 Log. Serial No.  
 OR  
 Log. Serial No.  
 Log. Serial No.







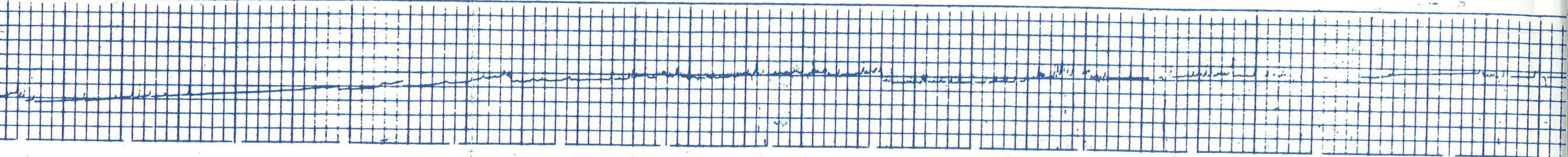
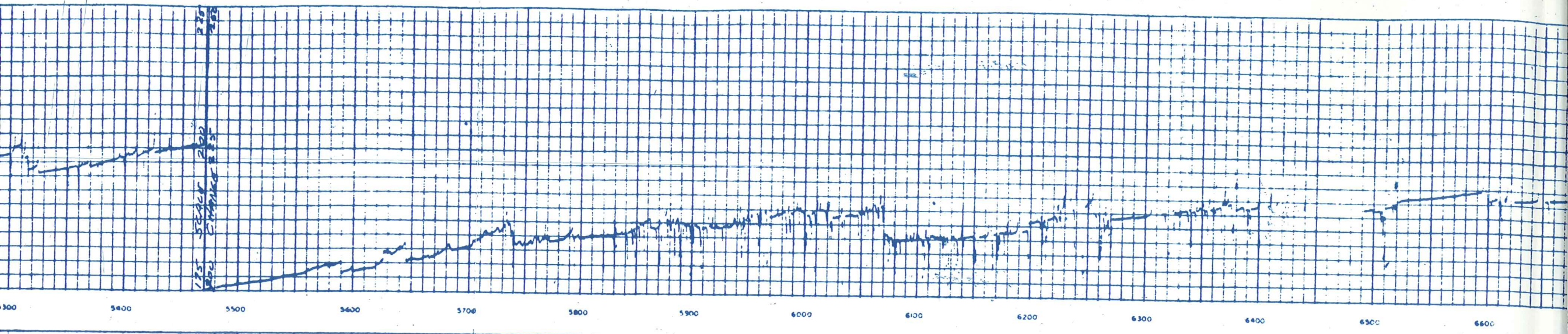
100 SEACH 1.5  
1st CHANNEL 2.5

1st SEACH 200  
1st CHANNEL 2.5

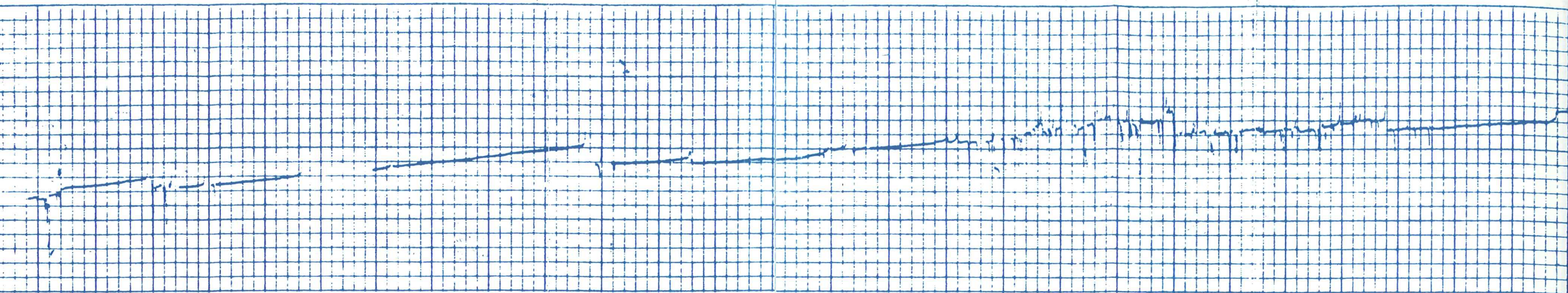
4200 4300 4400 4500 4600 4700 4800 4900 5000 5100 5200 5300 5400

55









6500

6600

6700

6800

6900

7000

7100

7200

7300

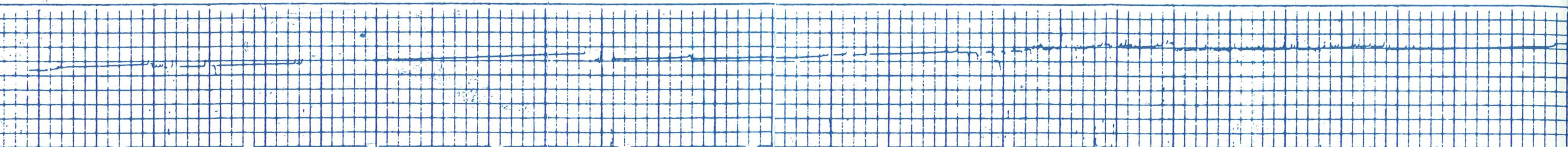
7400

7500

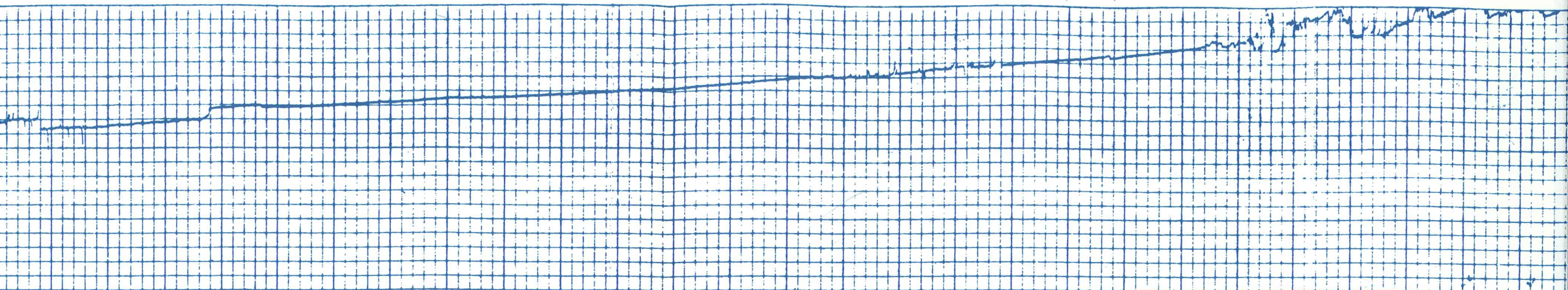
7600

7700

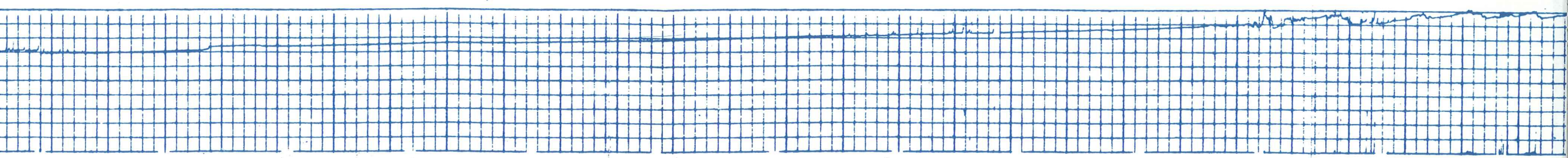
7800



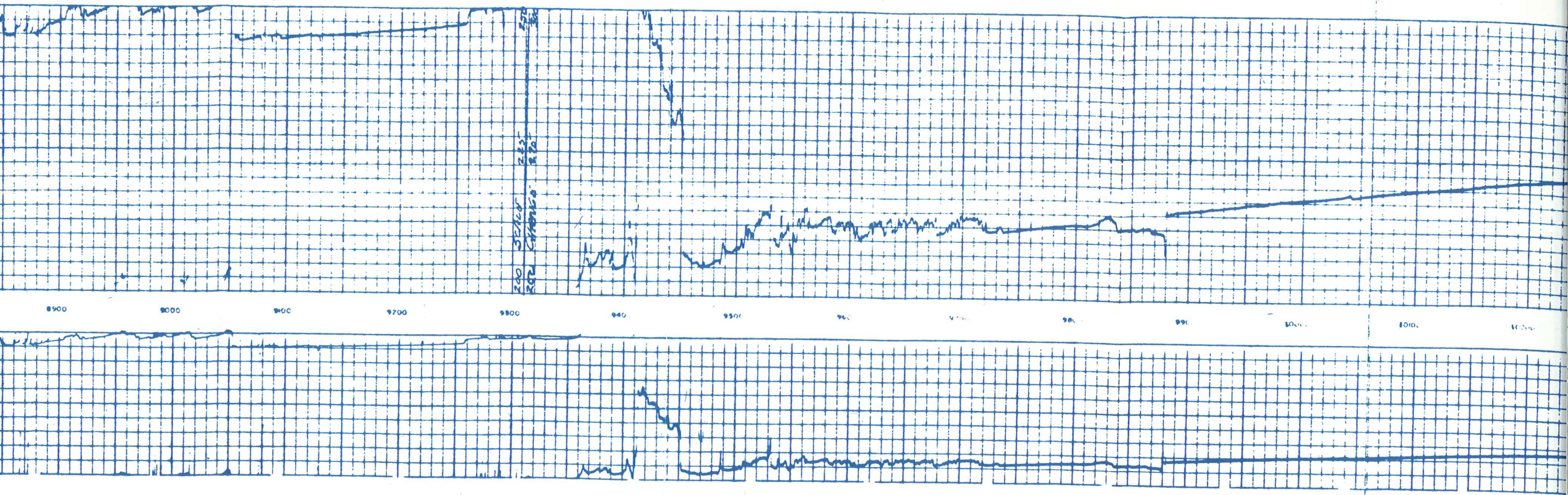




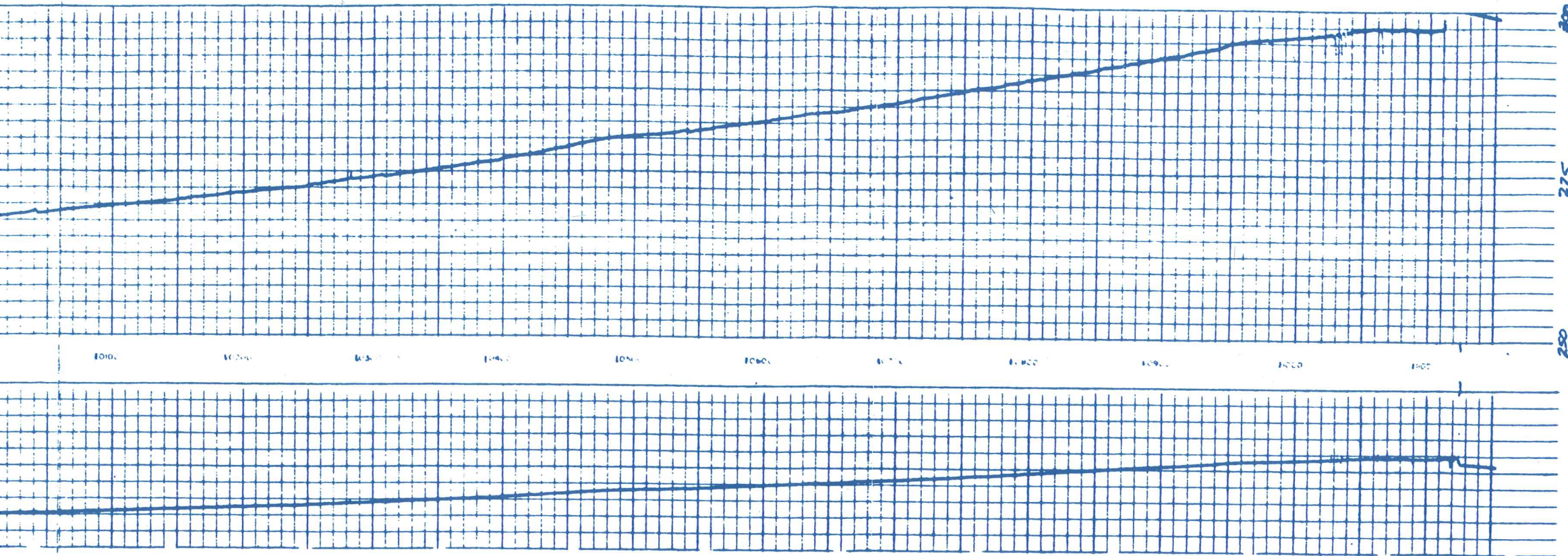
7700 7800 7900 8000 8100 8200 8300 8400 8500 8600 8700 8800 8900 9000











**Schlumberger**

COUNTY: \_\_\_\_\_  
 FIELD: \_\_\_\_\_  
 COUNTY: \_\_\_\_\_  
 LOCATION: **API 11**  
 Sec. **13**

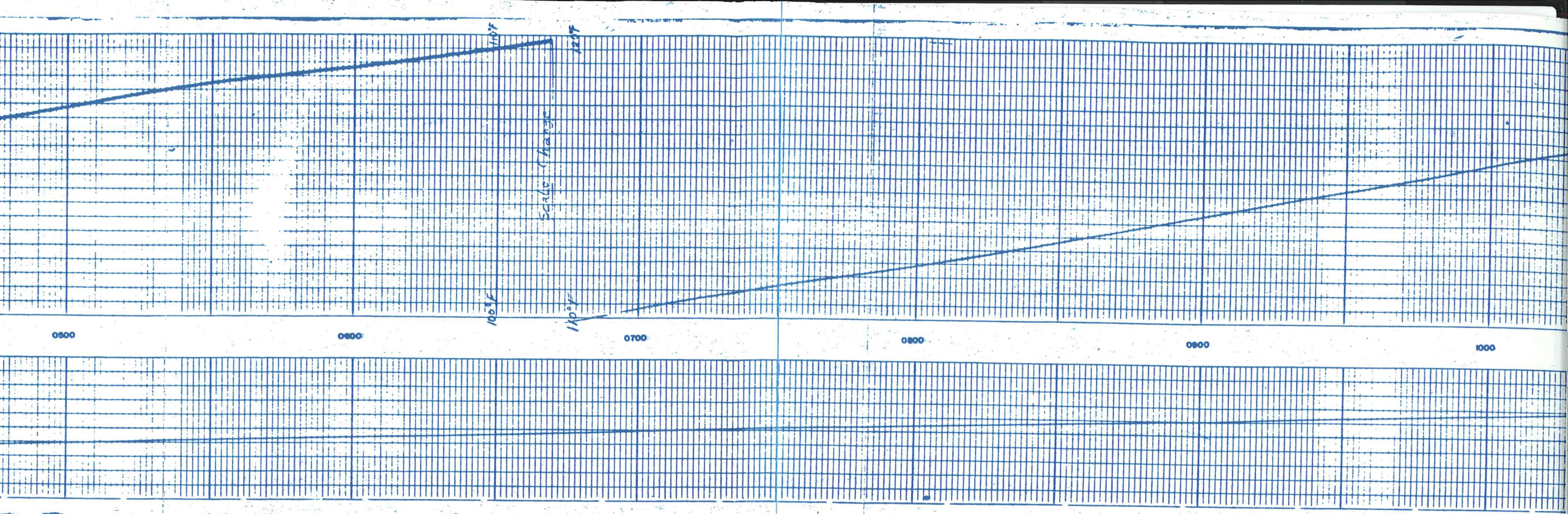
Permanent Datum: \_\_\_\_\_  
 Log Measured From: **KB**  
 Drilling Measured From: \_\_\_\_\_

Date: **6/2**  
 R. No.: \_\_\_\_\_  
 Depth-Driller: **410**  
 Depth-Logger: **410**  
 B. Log Interval: **410**  
 Top Log Interval: **410**  
 Casing-Driller: **13 3/8**  
 Casing-Logger: **3 3/8**  
 Casing Size: **1 1/2**  
 Casing Weight: **48**  
 Casing Thickness: **1 1/2**  
 Bit Size: **12 1/2**  
 Type Fluid in Hole: **FG**  
 Dens. Visc: **8.9**  
 Time Since Circ: **24**  
 BHT: **144**  
 Equip. Location: **7680**  
 Recorded By: **SM**  
 Witnessed By: **MM**









0500

0600

100°F

120°F

0700

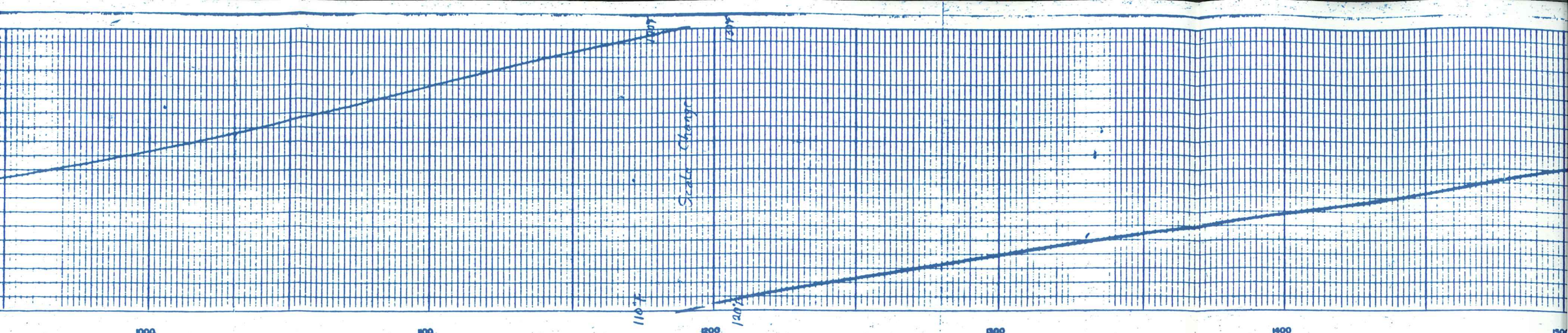
0800

0900

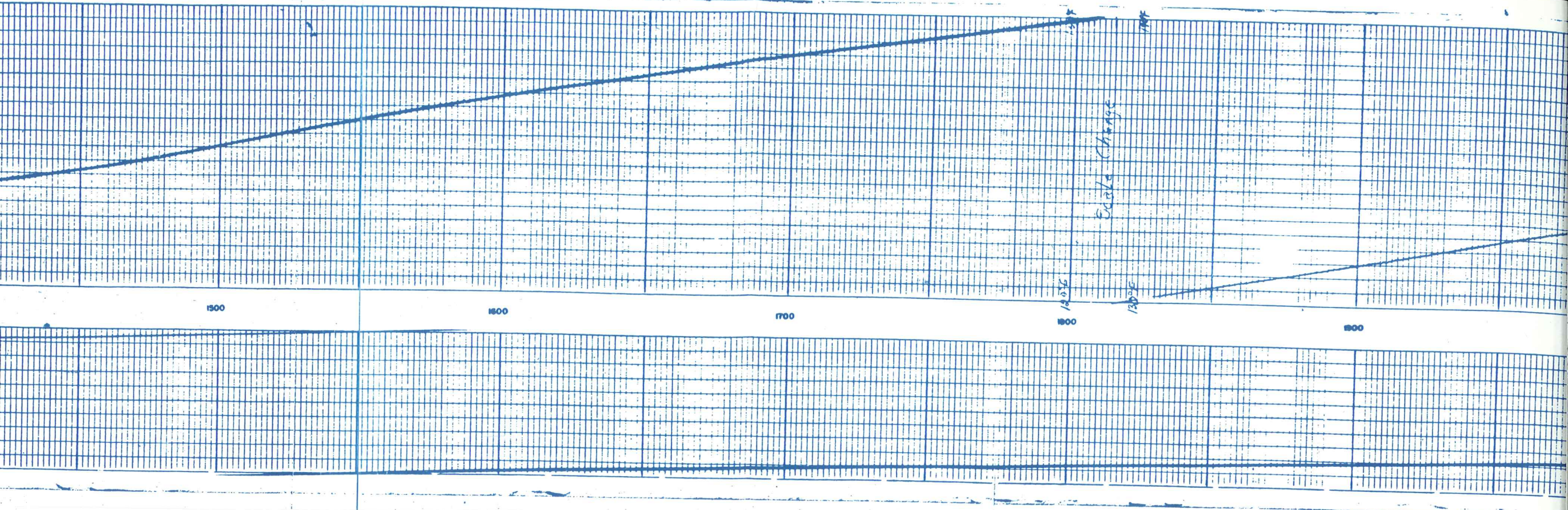
1000

Scale Change

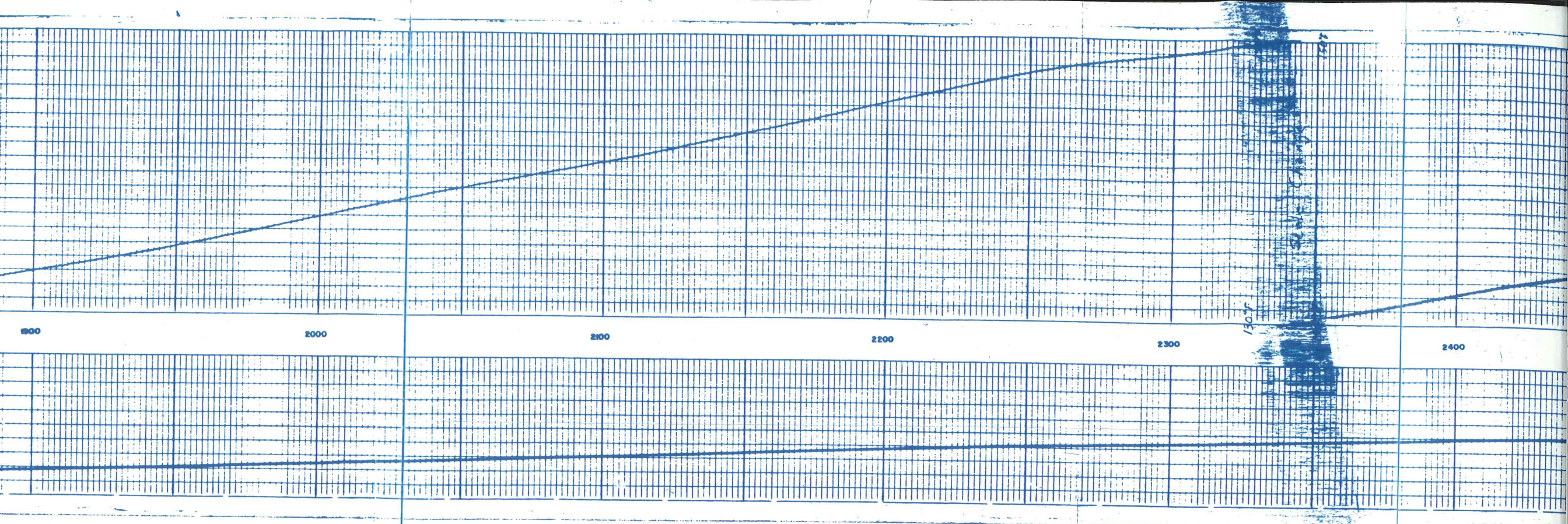






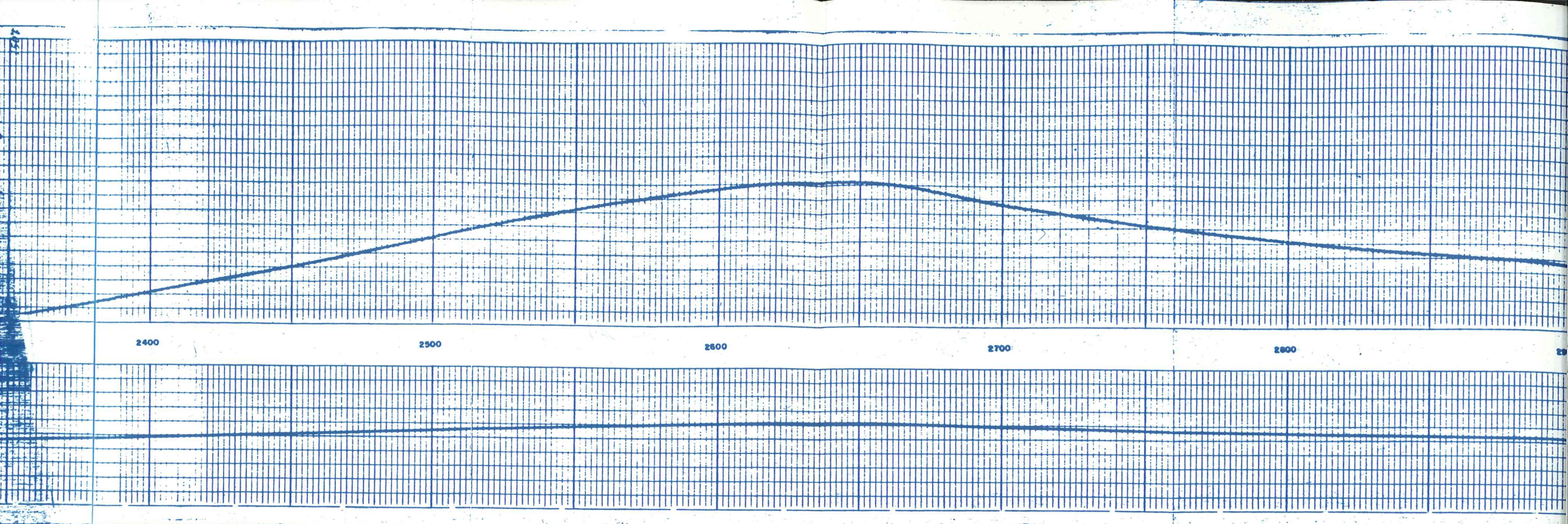






1900                      2000                      2100                      2200                      2300                      2400





2400

2500

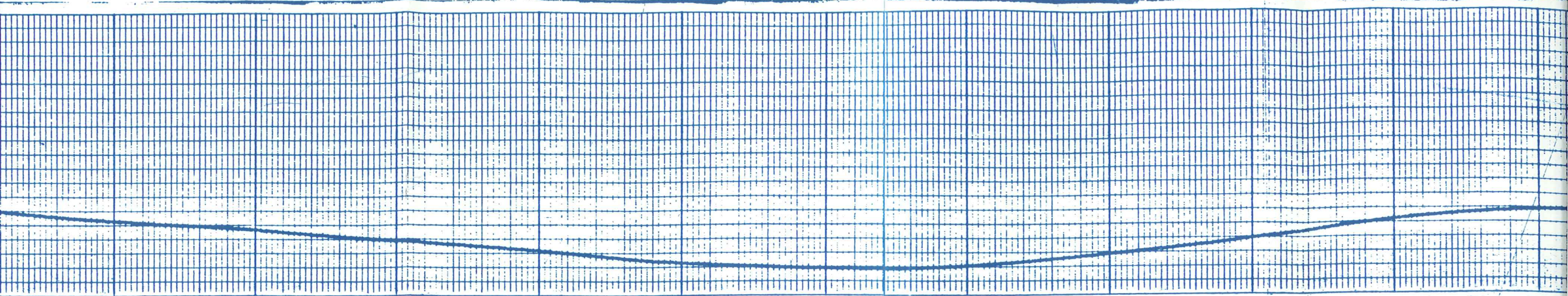
2600

2700

2800

2900





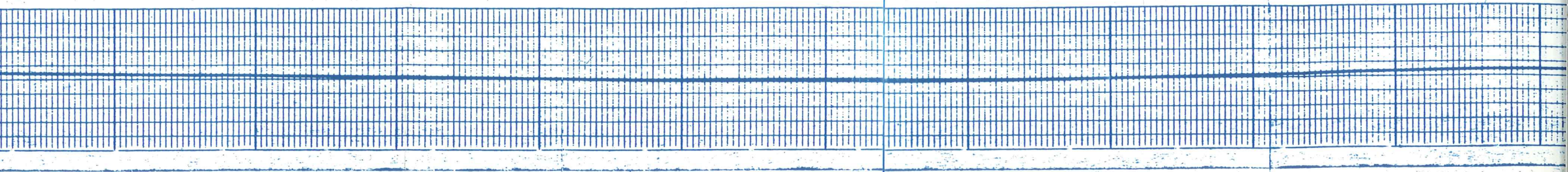
2800

3000

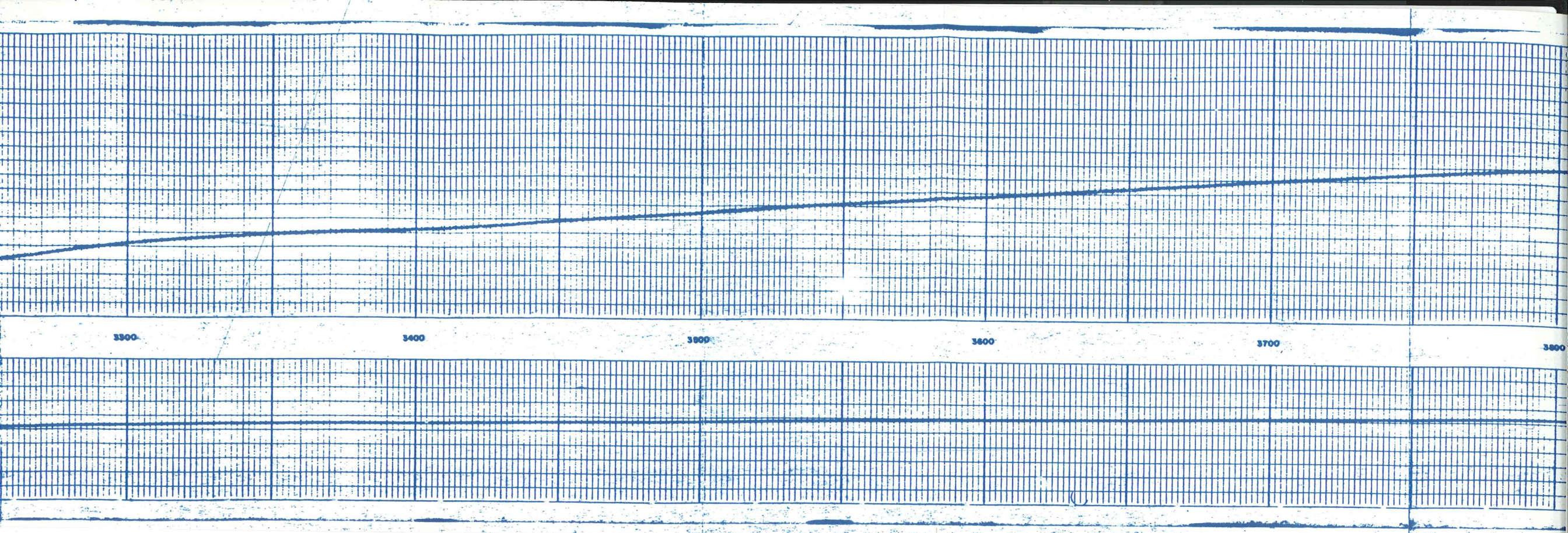
3100

3200

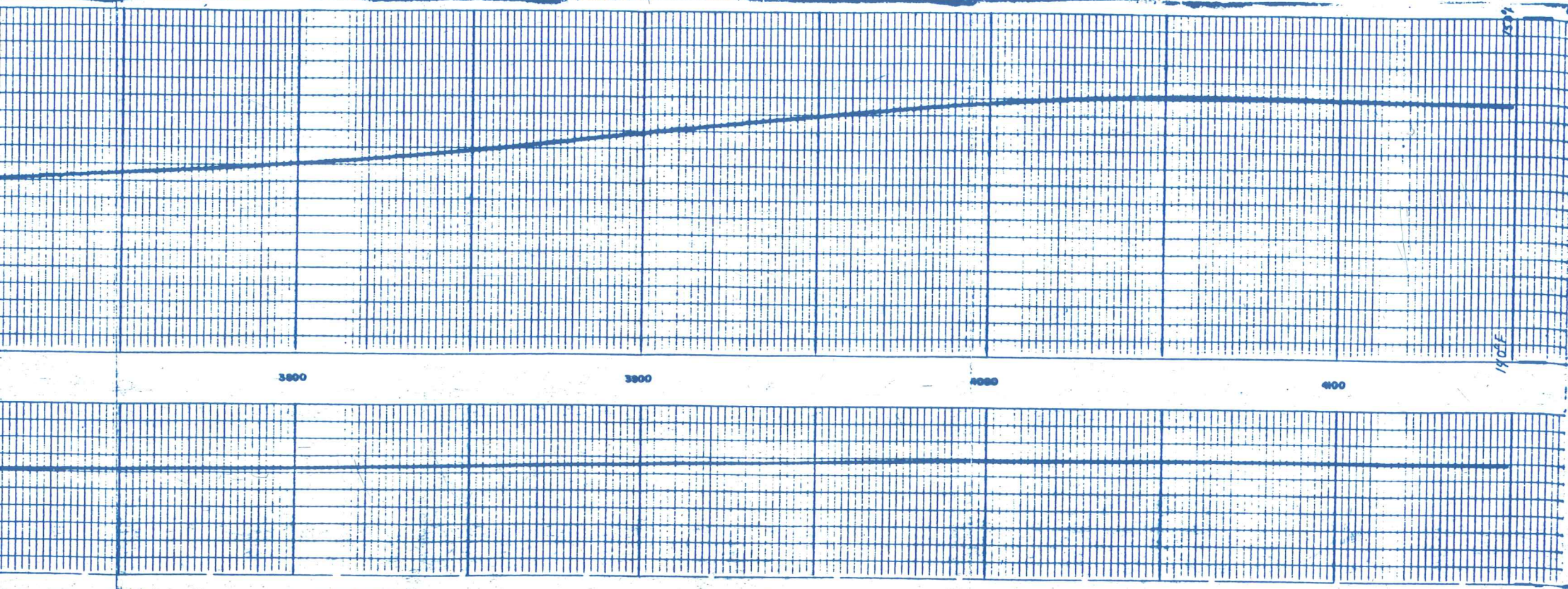
3300











TEMPERATURE "F."

COMPANY Apschulz Corporation  
 WELL Federal 60-13 No. 1  
 FIELD Wildcat  
 COUNTY Payson STATE Idaho

SCHL. F.R. 9107  
 SCHL. T.D. 9110  
 DRIL. T.D. 9100