



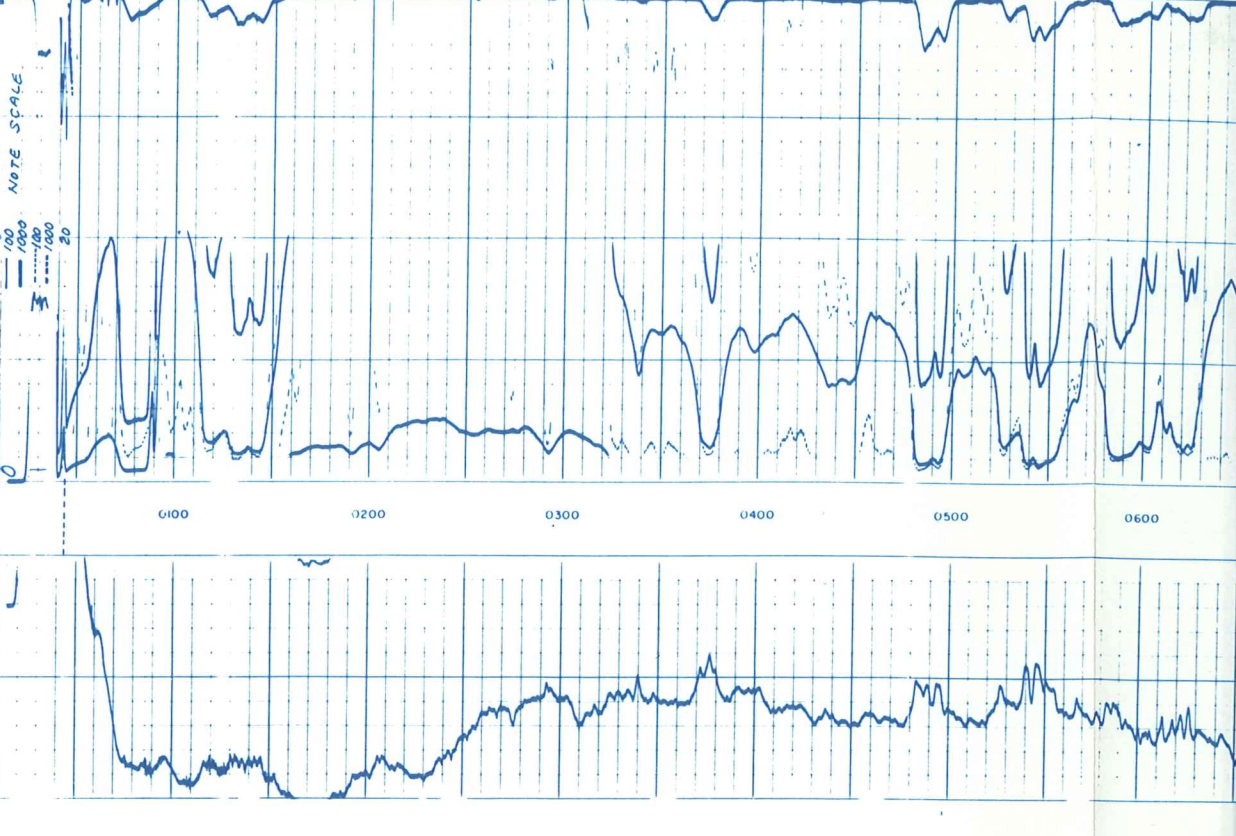
REMARKS:

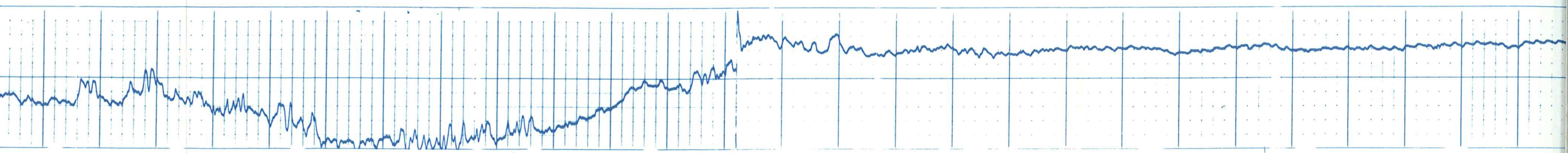
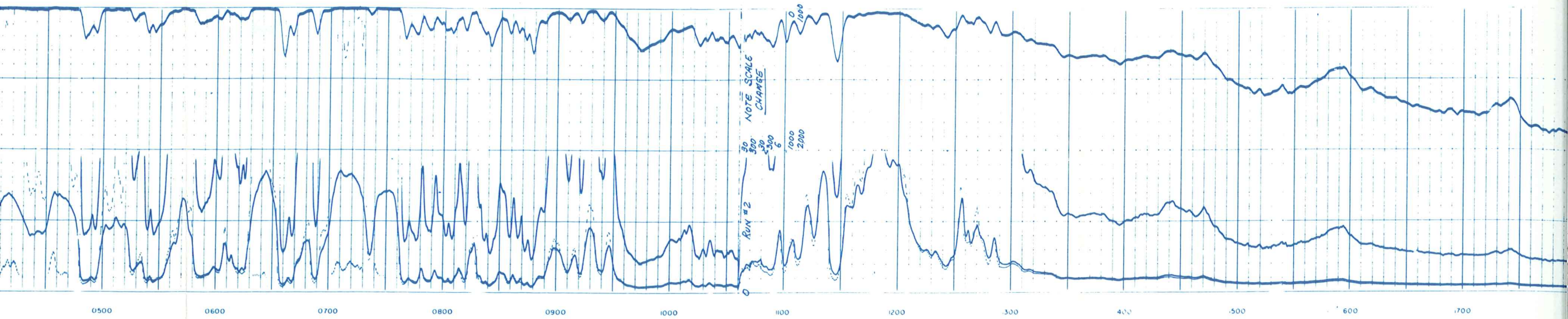
REPRODUCTION FOR RESALE PROHIBITED

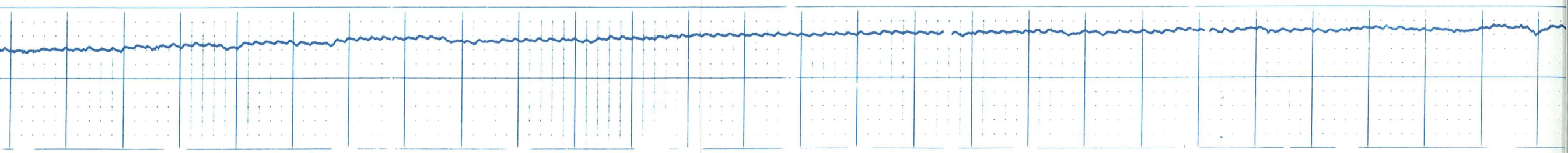
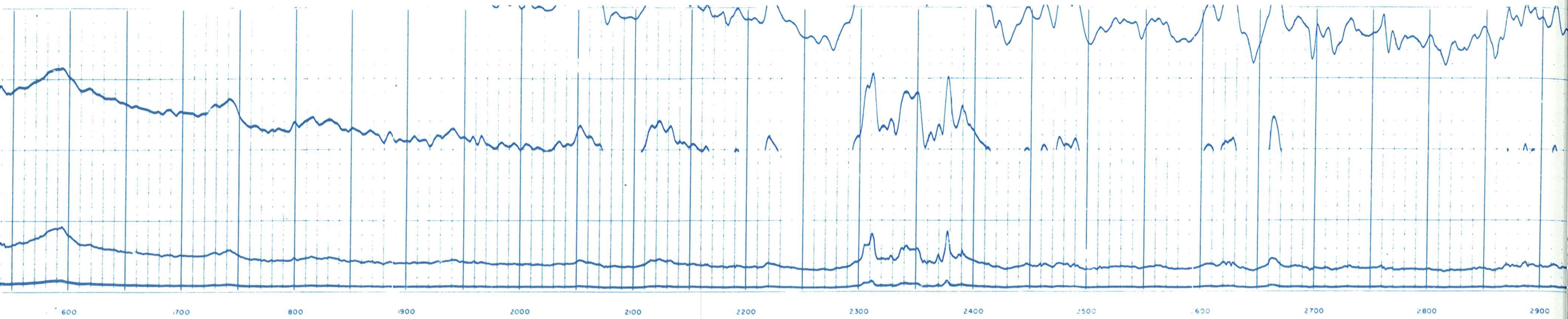
CHANGES IN MUD TYPE OR ADDITIONAL SAMPLES		SCALE CHANGES		Depth	Scale Up Hole	Scale Down Hole
Date	Sample No.	Type Log	Depth	Scale Up Hole	Scale Down Hole	
			44'-9 3/4"			
			100'-0 000"			
<p>5-23-73 FIVE 11,947 * 11,961 11,958 10,369 13 3/4" @ 3028 9 3/4 GEL-LIGNITE 74 45 100 190</p> <p>CURC .484 @ 114 °F .607 @ 74 °F .572 @ 74 °F M @ M °F M @ M °F 5 1/2 HR SEE REMARKS °F 3714 B&amp;S FRY CLBERT</p>						
<p>Dens. _____ Visc. _____</p> <p>ph. _____</p> <p>Fluid Loss _____</p> <p>Source of Sample _____</p> <p>Rm @ Meas. Temp. _____ °F</p> <p>Rm @ Meas. Temp. _____ °F</p> <p>Rm @ Meas. Temp. _____ °F</p> <p>Source Ref _____</p> <p>Rm @ BHT _____ °F</p> <p>Rm @ BHT _____ °F</p> <p>Rm @ BHT _____ °F</p>						
<p><b>EQUIPMENT DATA</b></p> <p>Run No. _____</p> <p>Panel No. _____</p> <p>Card No. _____</p> <p>Spindle No. _____</p> <p>Mud. Panel No. _____</p> <p>G.R. Card No. _____</p> <p>TR No. _____</p> <p>Count Device _____</p> <p>Stone Off. - inches _____</p> <p>Time Const. - Sec. _____</p> <p>Speed - RPM _____</p>						
<p><b>REMARKS</b></p> <p>Service Order No. _____</p> <p>API Serial No. _____</p> <p>Run #1: BHT - 89°</p> <p>200 THERMISTOR CAL. TEMPERATURE EXCEEDED</p> <p>ALIAS DE THERMISTOR (RUN #3)</p> <p>Run 3: OFF ROTARY AT 1330</p> <p>BROKE CIRCS AT: 1330</p> <p>Run 4: OFF BOTTOM AT 0335</p> <p>Break Circulation At: 2200</p> <p>* driller ID at 11963 and plugged back to 11957</p> <p>Thermometer lost in hole.</p> <p>Surface determined sonde error used for GFRAD.</p> <p>GFRAD sonde error corrected for _____ inch</p> <p>borehole signal at Rm = _____</p> <p>GFRAD zero set in hole at depth of _____ feet.</p>						
<p><b>CALIBRATION DATA</b></p> <p>CALIBRATION: _____</p> <p>BACKGND. _____</p> <p>SOURCE _____</p> <p>GALV. INCR. _____</p> <p>DIVISION _____</p> <p>SENS. TAP _____</p> <p>SENS. TAP _____</p> <p>(FOR CAL.) _____</p> <p>(RECORD) _____</p> <p>CONST. _____</p> <p>GAMMA RAY: _____</p>						

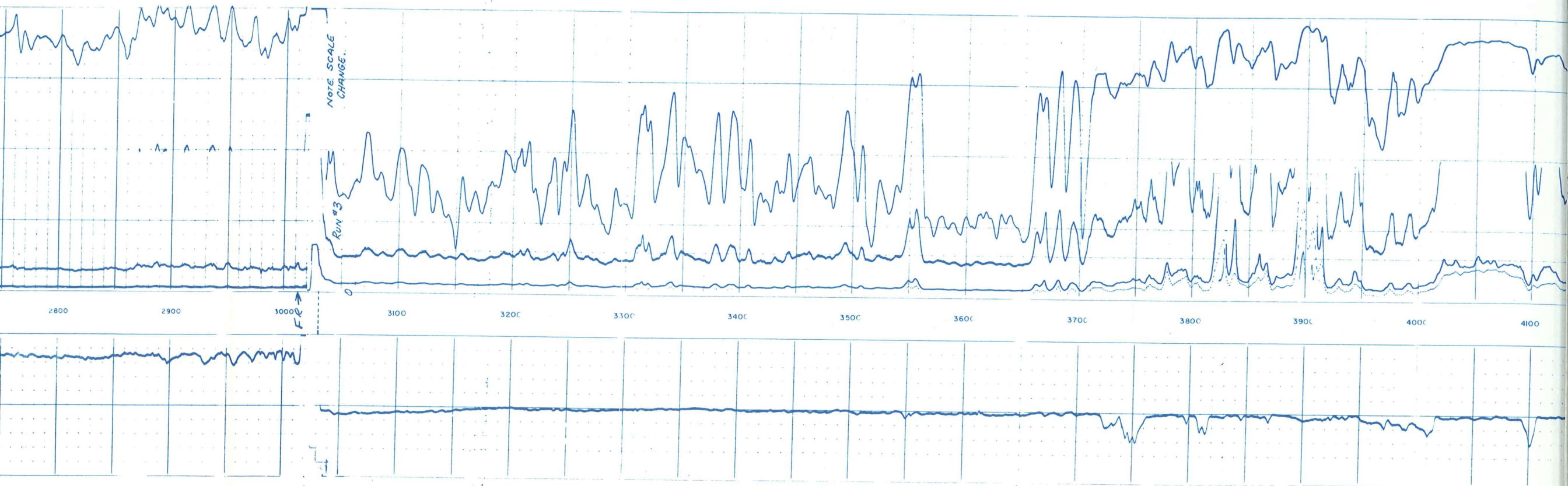
All interpretations are opinions based on inferences from electrical or other measurements and we cannot and do not guarantee the accuracy or correctness of any interpretations, and we shall not, except in the case of gross or willful negligence, be held responsible for any loss, costs, damages or expenses incurred or sustained by anyone resulting from any interpretation made by any of our officers, agents or employees. These interpretations are also subject to Clause 7 of our General Terms and Conditions as set out in our current Price Schedule.

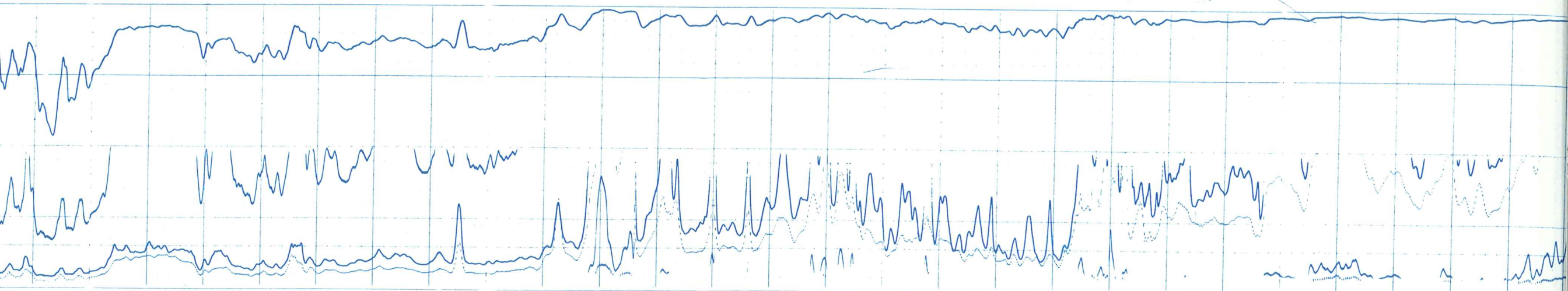
SPONTANEOUS-POTENTIAL		CONDUCTIVITY	
MILLIVOLTS		MILLIMHOS/M = OHMS IN/M	
<p>10 - +</p>		<p>DEEP INDUCTION LOG</p>	
<p>RESISTIVITY OHMS. M<sup>2</sup>/M</p>		<p>DEEP INDUCTION LOG</p>	
<p>DEEP INDUCTION LOG</p>		<p>DEEP INDUCTION LOG</p>	
<p>AVERAGED LATEROLOG - 8</p>		<p>AVERAGED LATEROLOG - 8</p>	
<p>AMP. AVE. LATEROLOG - 8</p>		<p>AMP. AVE. LATEROLOG - 8</p>	



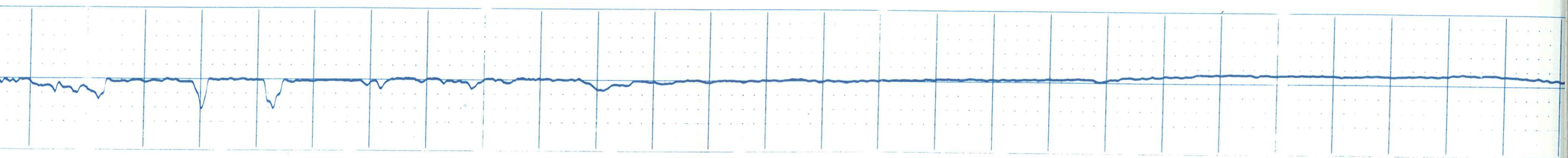


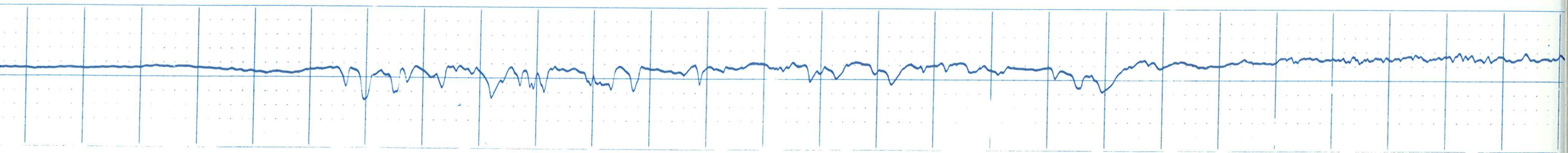
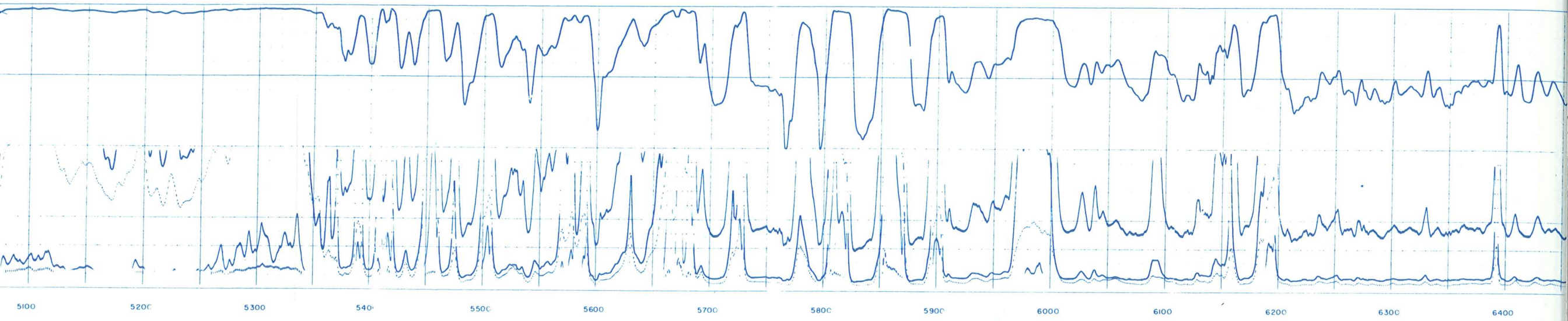


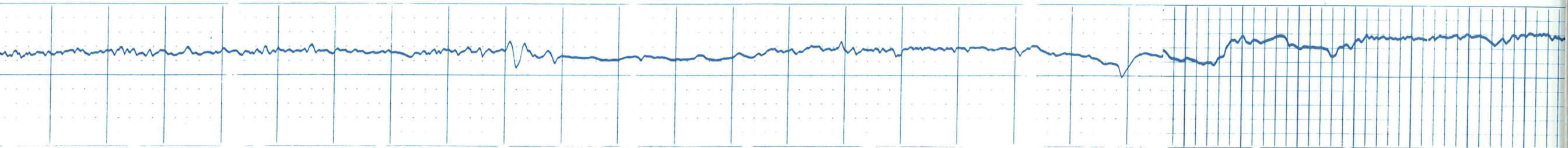
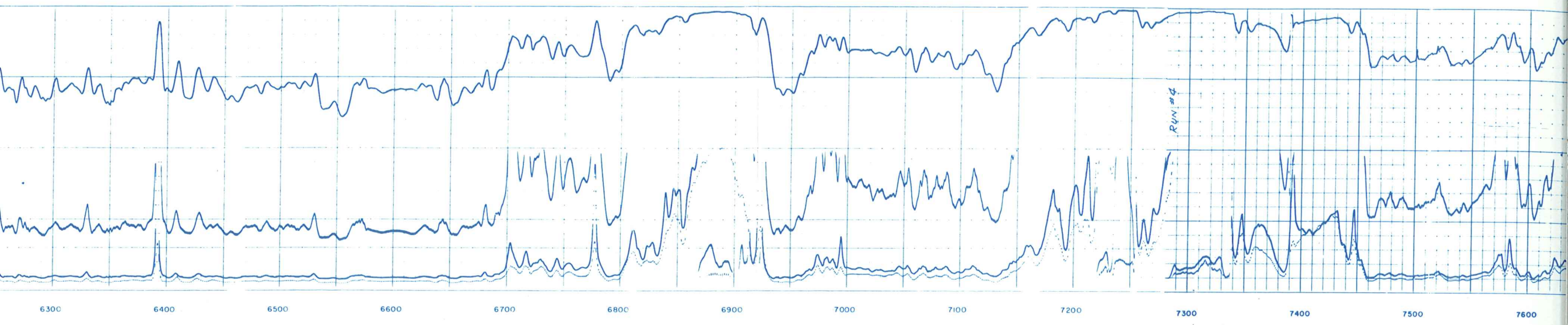




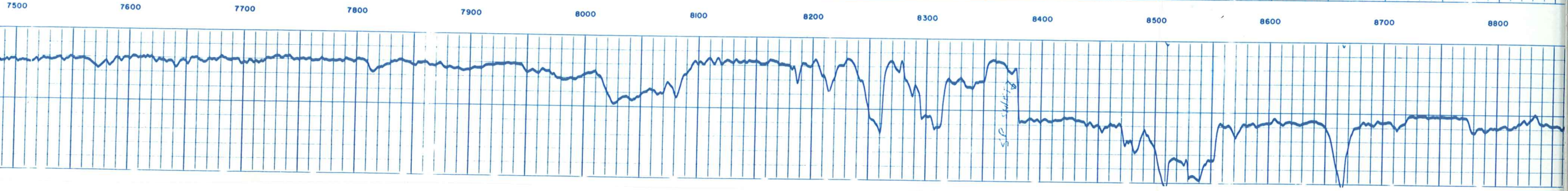
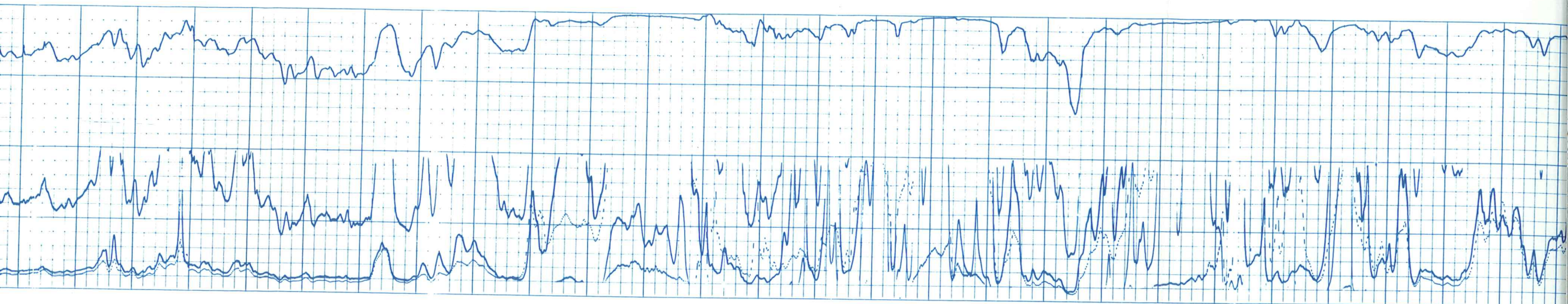
4000 4100 4200 4300 4400 4500 4600 4700 4800 4900 5000 5100 5200 5300

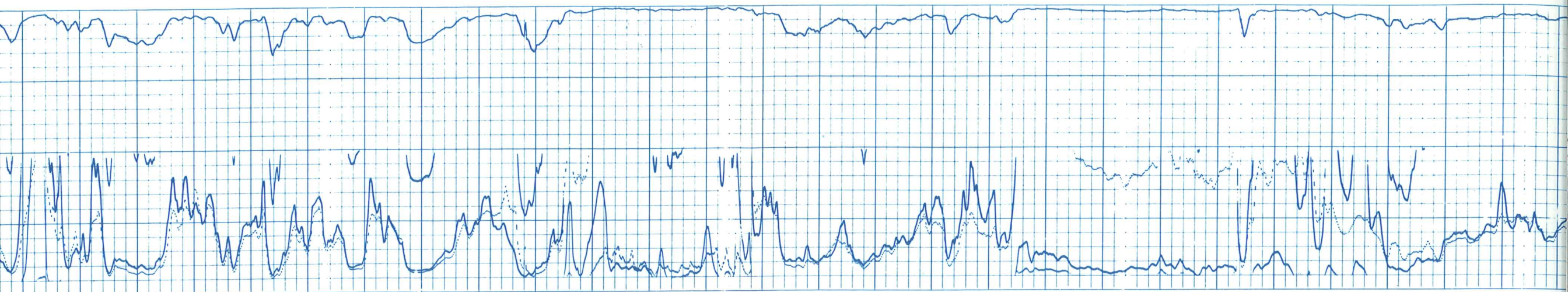




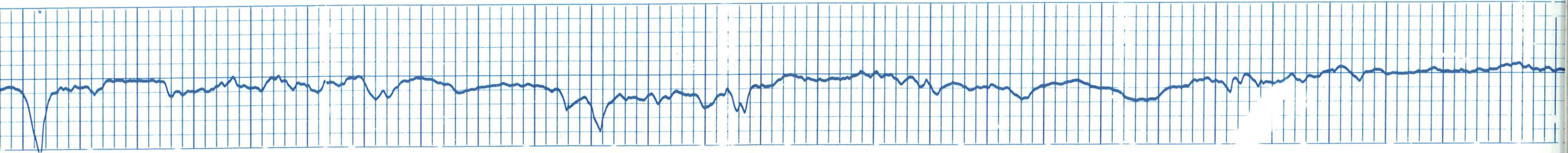


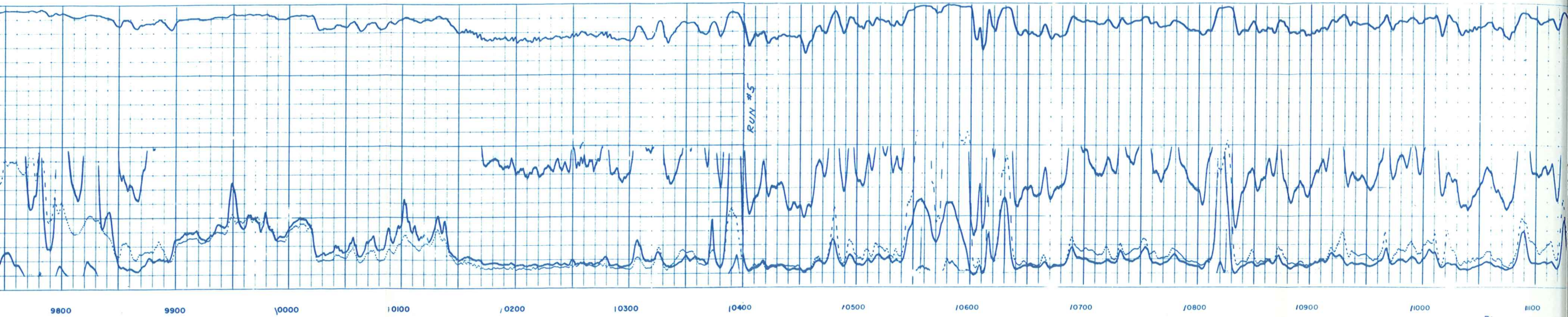




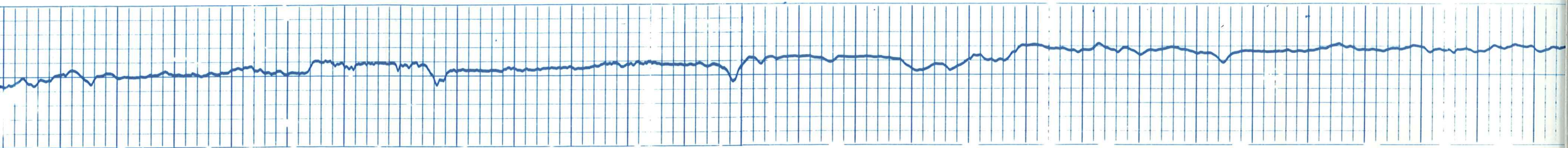


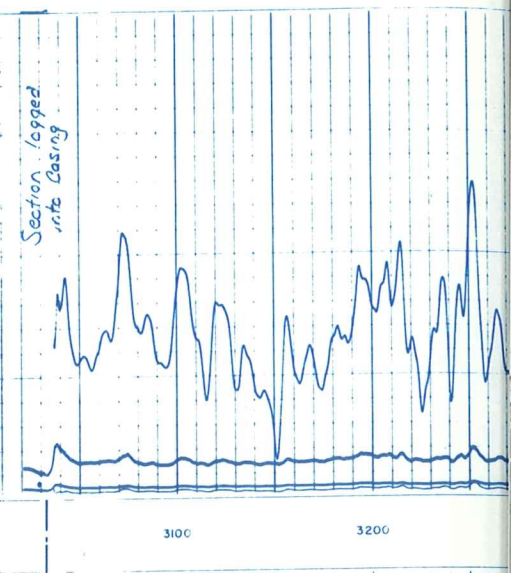
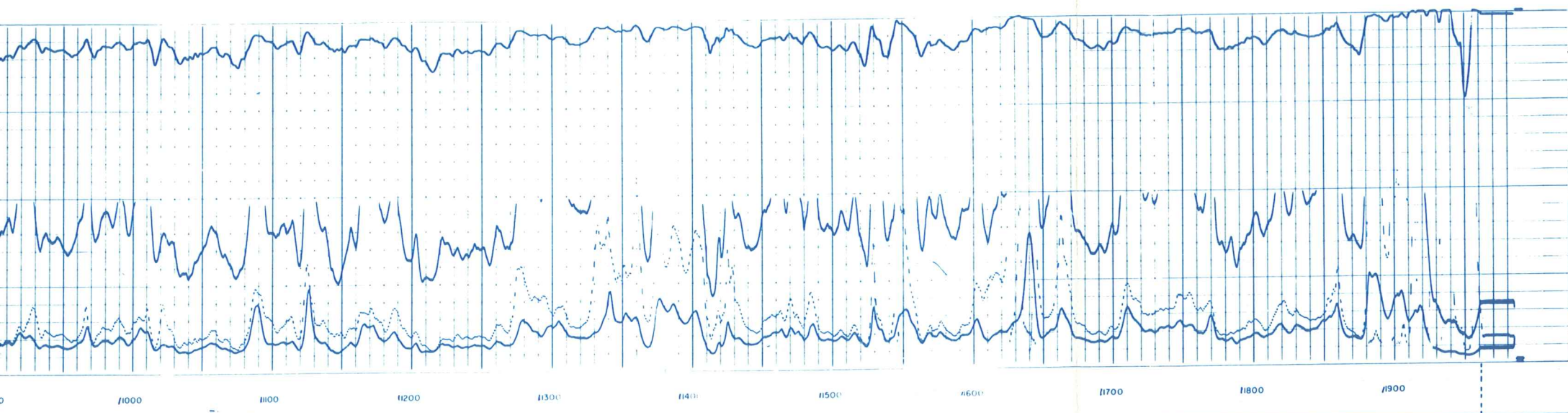
8700 8800 8900 9000 9100 9200 9300 9400 9500 9600 9700 9800 9900 10000





9800 9900 10000 10100 10200 10300 10400 10500 10600 10700 10800 10900 11000





Section logged  
into casing

