

GL02701-5

#7

UNITED STATES DEPARTMENT OF THE INTERIOR
BUREAU OF LAND MANAGEMENT
EARTH SCIENCES DIVISION

SCHLUMBERGER

COMPENSATED FORMATION DENSITY LOG

Gamma-Gamma

COUNTY FIELD or LOCATION WELL COMPANY

COMPANY STANDARD OIL COMPANY OF CALIFORNIA IBM

WELL HIGHLAND LFL #1 P202764

FIELD WILDCAT - NW CALDWELL AREA

COUNTY PRAYETTE STATE IDAHO

Location: 2210' FWL of 1650 FWL Other Services:

Sec. 24 Twp. 6N Rge. 5W

Permanent Datum: GL; Elev.: 2631 Elev.: K.B. 2647
 Log Measured From KB, 16 Ft. Above Perm. Datum D.F.
 Drilling Measured From KB G.I. 2631

Run No.	Date	BORE-HOLE RECORD			CASING RECORD			
		Bit	From	To	Size	Wgt.	From	To
1	3-16-73	12 1/4	1037	3060	20	74	0	1057
2	4-12-73	9 7/8	3028	7423	13 3/4	--	372	3028
3	5-3-73	9 7/8	"	"	"	"	"	"
4	5-23-73	9 7/8	"	11,947	"	"	"	"

CONFIDENTIAL

THIS ARTICLE ENTRUSTED TO

FOR ITS SOLE USE AND BENEFIT.

Calif. Penal Code Sec. 499c is applicable.
 Agreement Dated _____

The well name, location and borehole reference data were furnished by the customer.

Run No.	PG P-FA	PDH-A	PGH-A	PGS-S	SFT-106	SGH	Logging Unit	Location
1	372	601	290	318	325	--	750.3	5A-B
2	373	3AC	280	307	--	--	--	280.287
3	372	3A-321	E-164	0-335	--	--	--	213
4	372	3A-316	211	295 CALIBRATION DATA	--	--	--	104
Run No.	API Scale	Gamma Ray	Background CPS	Total CPS	FDC - Before Log - ACPS	FDC - After Log - ACPS	Gamma Ray	F
1	0-100	50	50	510	729	426	729	P1
2	0-100	110	110	510	360	360	360	P2
3	0-100	170	170	500	344	344	344	P3
4	0-100	70	70	300 LOGGING DATA	344	344	344	P4
Run No.	General	Depths	Speed Ft./Min.	Tc	API Scale	Liquid Density	Grain Density	Hole Fluid Porosity Scale
1	From To	From To	30	2	1.00	2.71	45-55	45-55
2	3012 3022	1057 3022	"	2	"	"	"	"
3	7420 " "	" "	"	3	"	"	"	"
4	" "	" "	"	3	"	"	"	"
Run No.	Rm. @	F 1% Solids by Vol.	% Oil by Vol.	% Water by Vol.	Viscosity, Sec/QT @ F	Solids, Av. Sp. Gr.	MUD DATA	
1	3012 @ 6.4	F	F	F	F	F	F	
2	3022 @ 6.4	F	F	F	F	F	F	
3	7420 @ 6.4	F	F	F	F	F	F	
4	7420 @ 6.4	F	F	F	F	F	F	

Remarks:

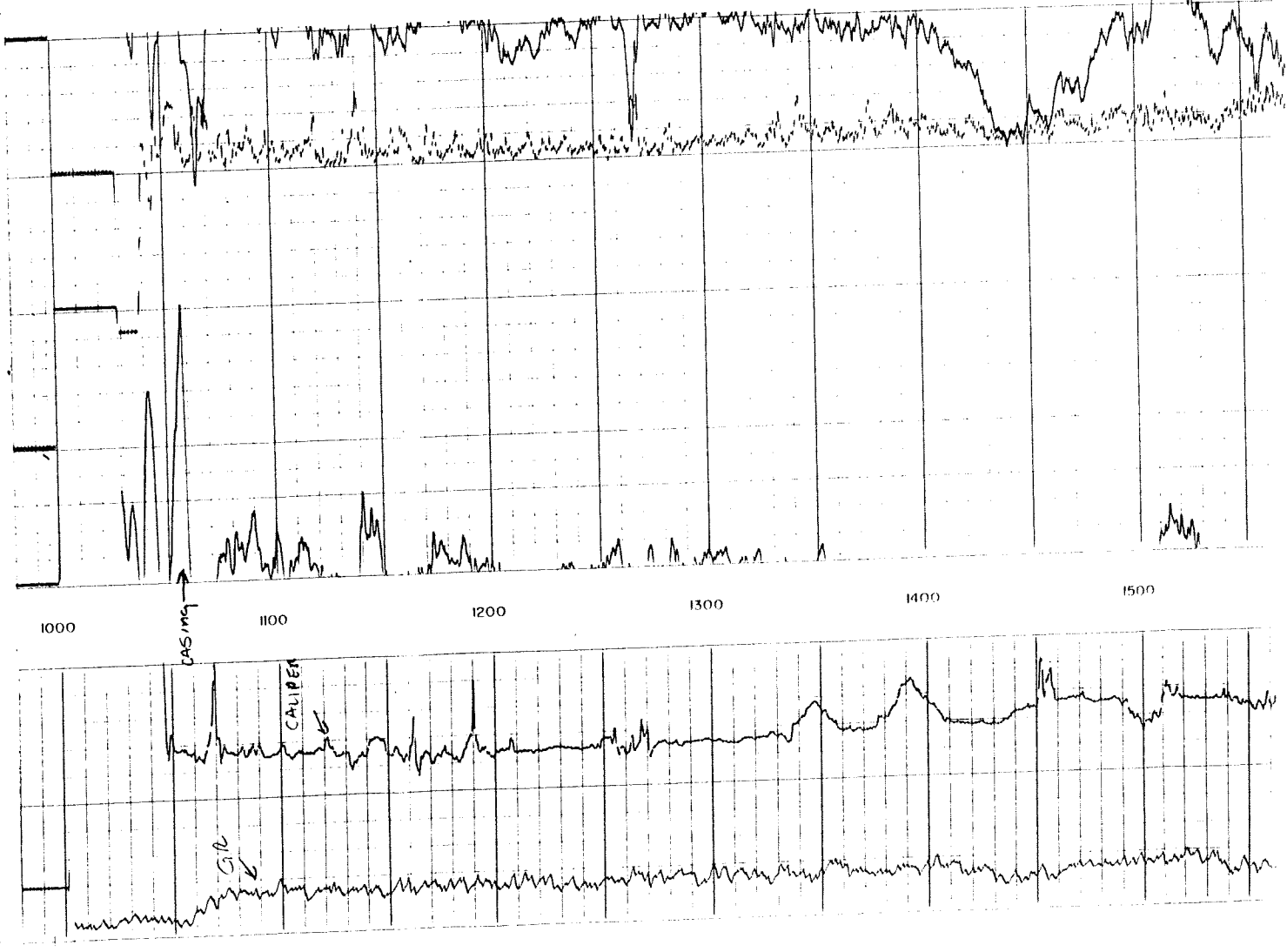
All interpretations are opinions based on inferences from electrical or other measurements and we cannot, and do not, guarantee the accuracy or correctness of any interpretations, and we shall not, except in the case of gross or willful negligence on our part, be liable or responsible for any loss, damage or expenses incurred or sustained by anyone resulting from any interpretation made by any of our officers, agents or employees. These interpretations are also subject to Clause 7 of our General Terms and Conditions as set out in our current Price Schedule.

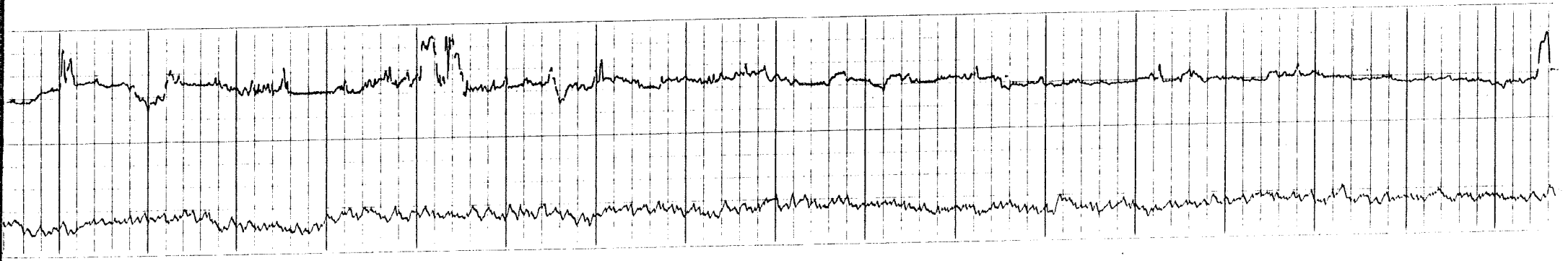
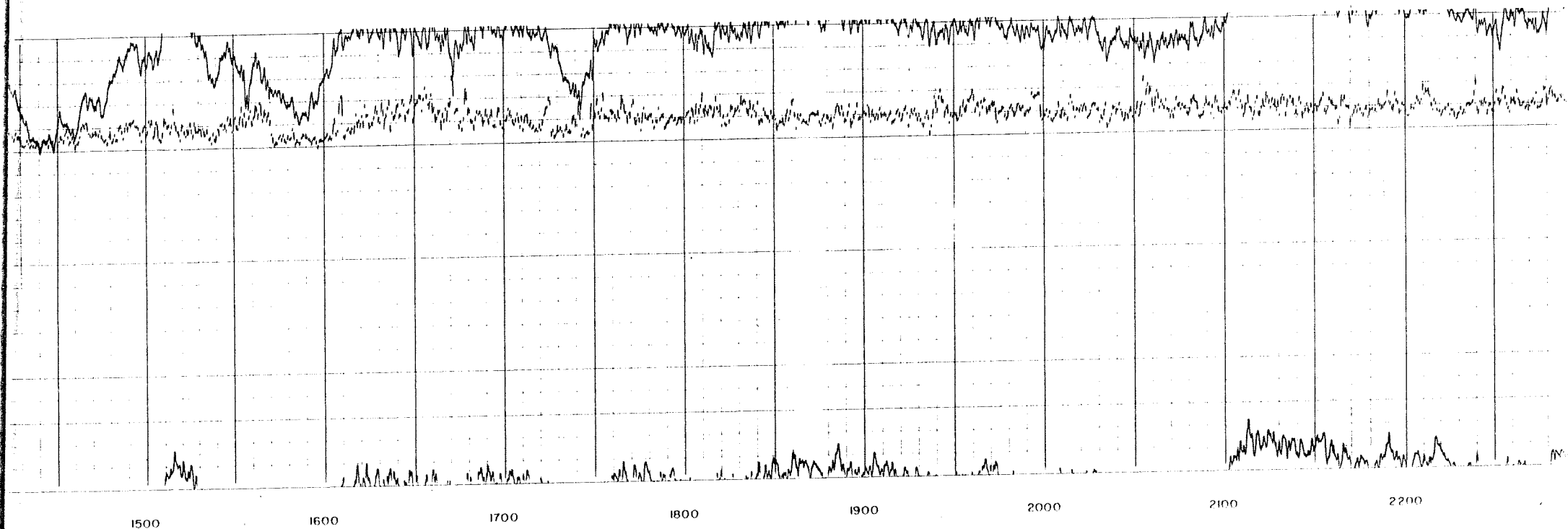
CALIPER HOLE DIAM. IN INCHES	DEPTHS		CORRECTION GRAMS/CC.	BULK DENSITY
	6"	16"		

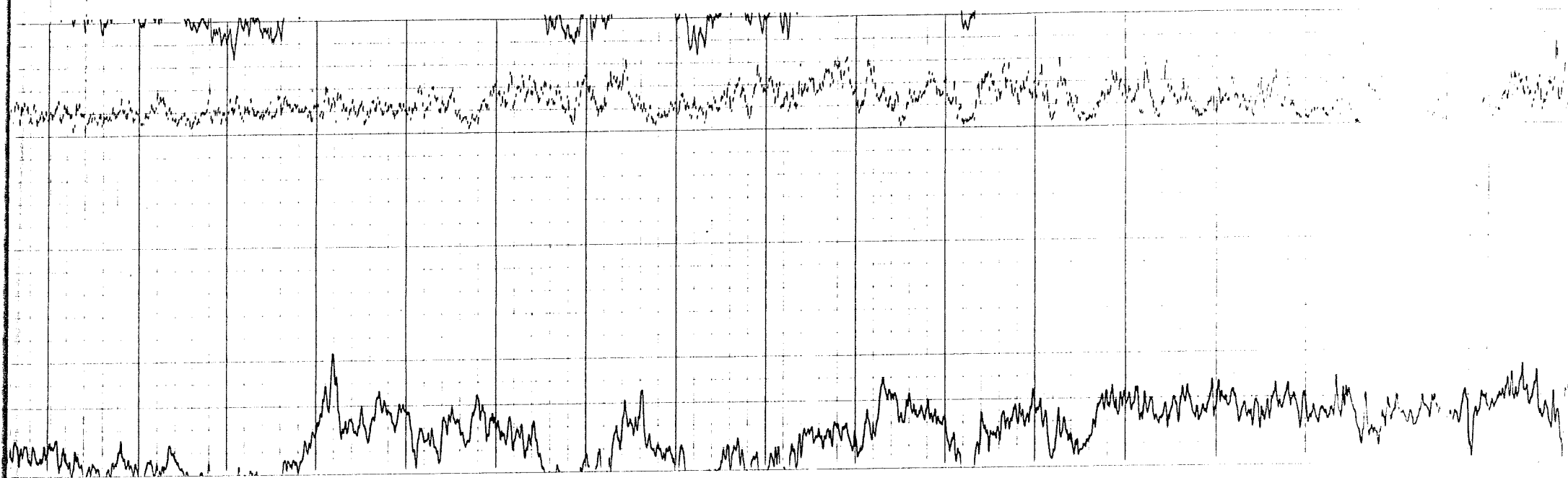
All interpretations are opinions based on inferences from electrical or other measurements and we cannot, and do not, guarantee the accuracy or correctness of any interpretations, and we shall not, except in the case of gross or willful negligence on our part, be liable or responsible for any loss, costs, damages or expenses incurred or sustained by anyone resulting from any interpretation made by any of our officers, agents or employees. These interpretations are also subject to Clause 7 of our General Terms and Conditions as set out in our current Price Schedule.

CALIPER HOLE DIAM. IN INCHES		CORRECTION GRAMS/CC.	
6"	1/8"	0	-0.25
GAMMA RAY API UNITS		BULK DENSITY GRAMS/CC.	
0	100	2.00	3.00
		1.50	2.00

DEPTHS







2200

2300

2400

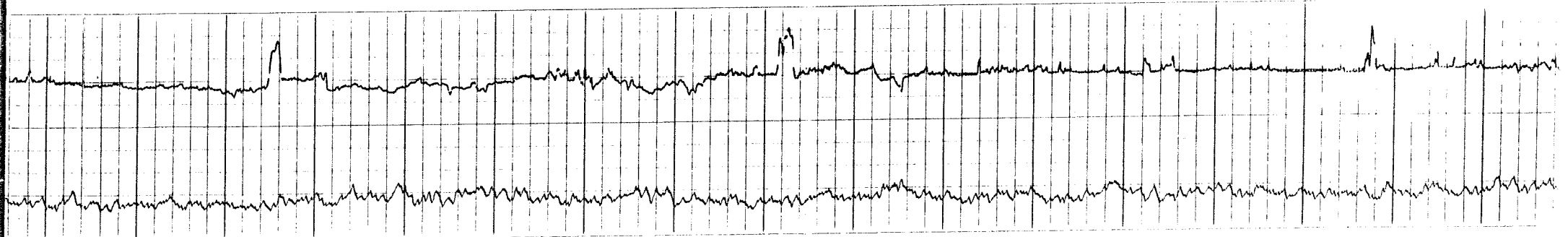
2500

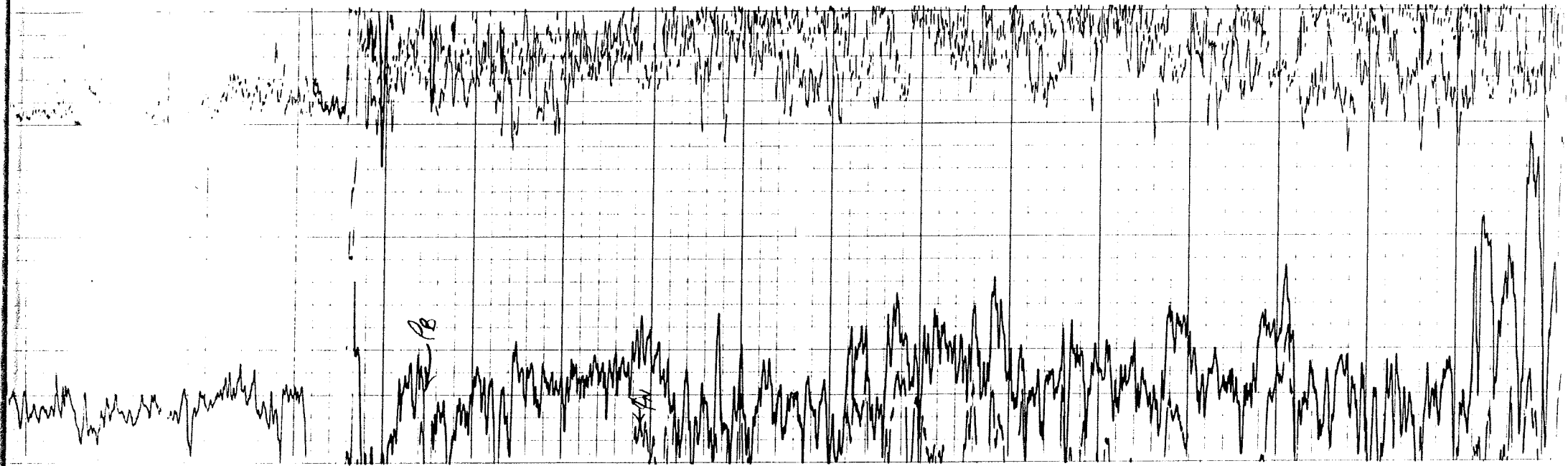
2600

2700

2800

2900





2900

3000

3100

3200

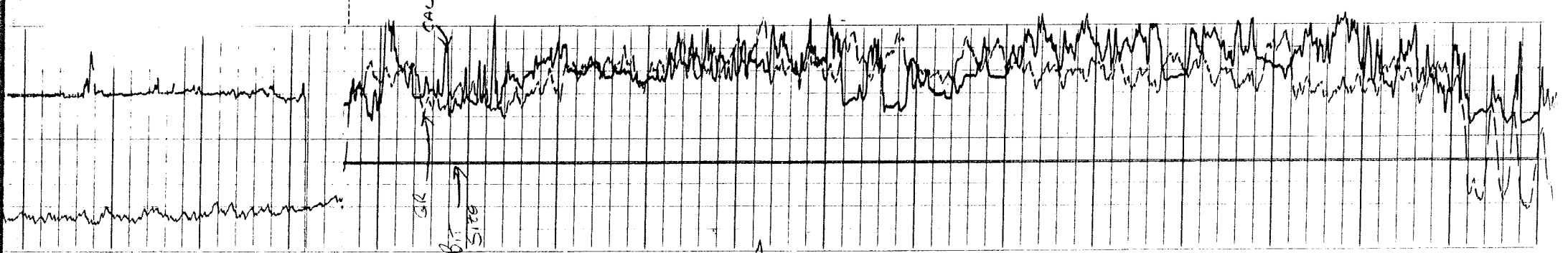
3300

3400

3500

3600

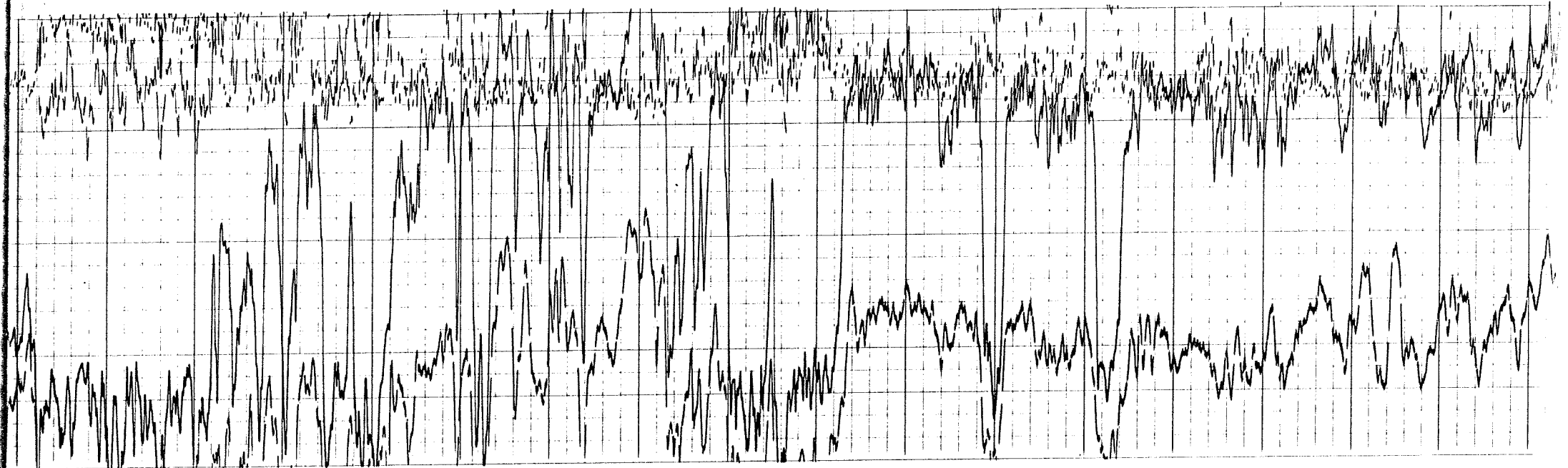
3700



PB

GR

S179



3600

3700

3800

3900

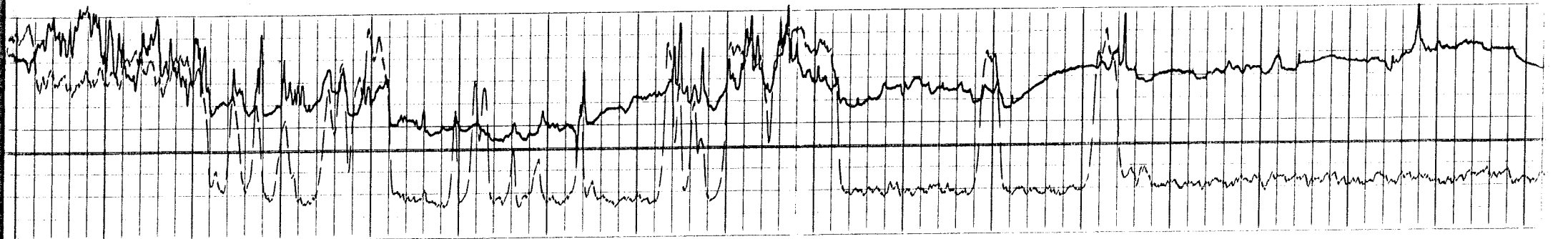
4000

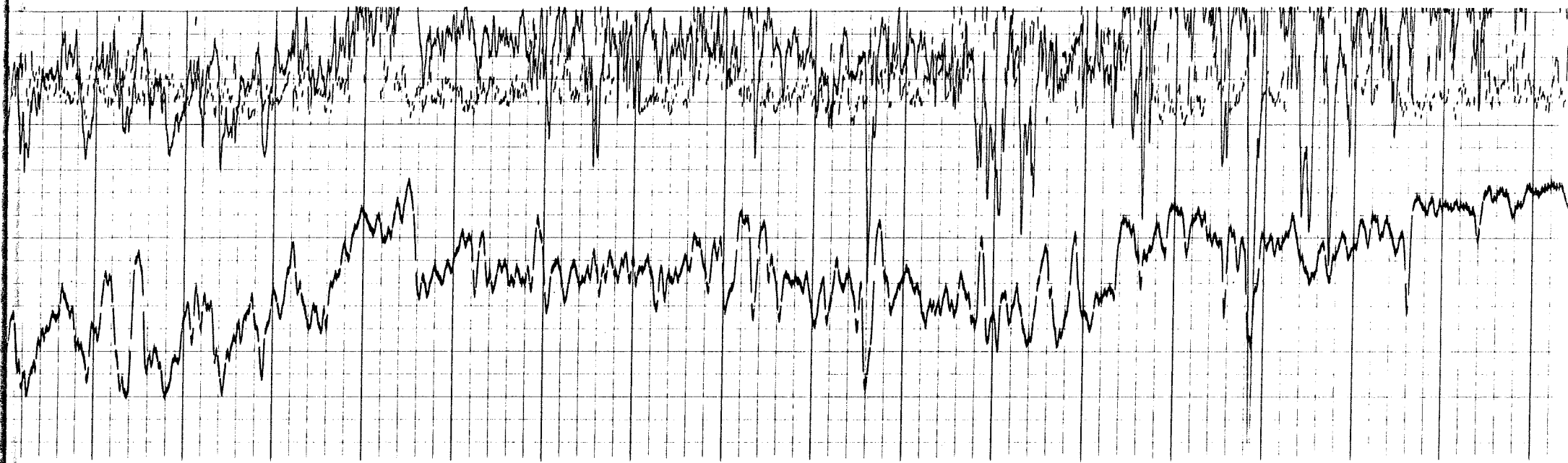
4100

4200

4300

4400





4300

4400

4500

4600

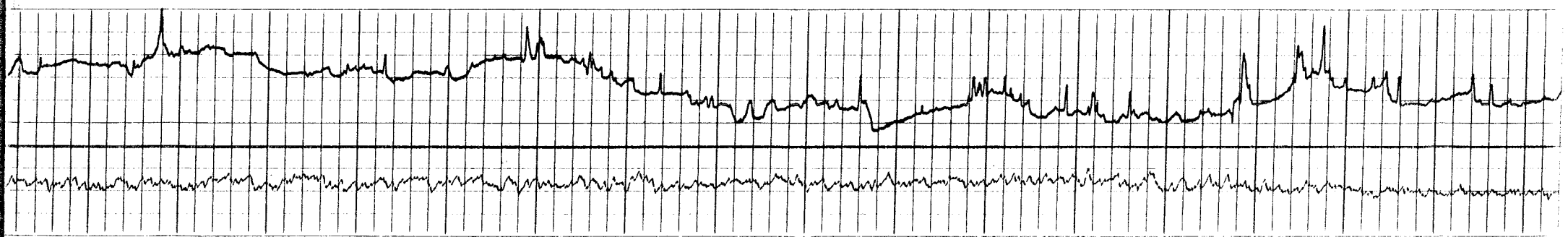
4700

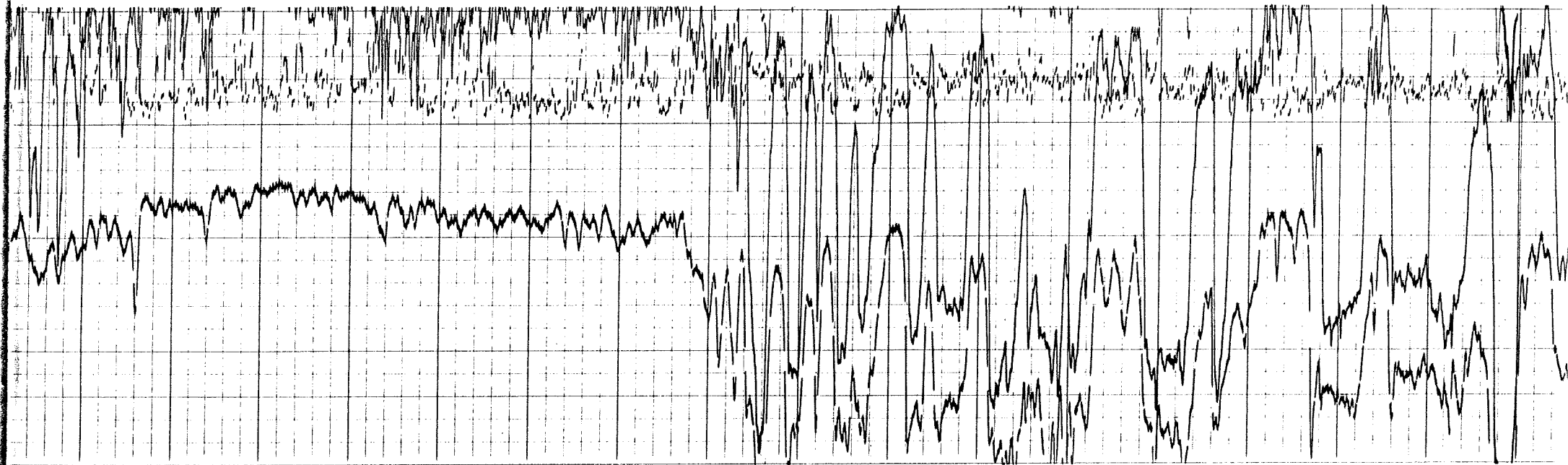
4800

4900

5000

5100





5000

5100

5200

5300

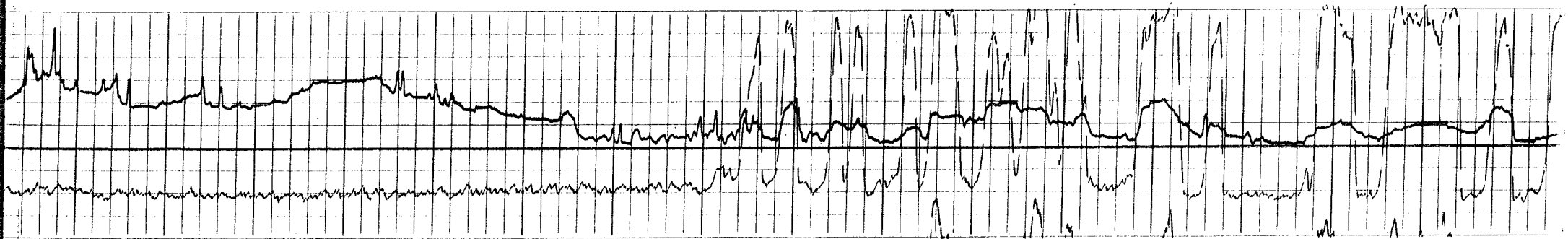
5400

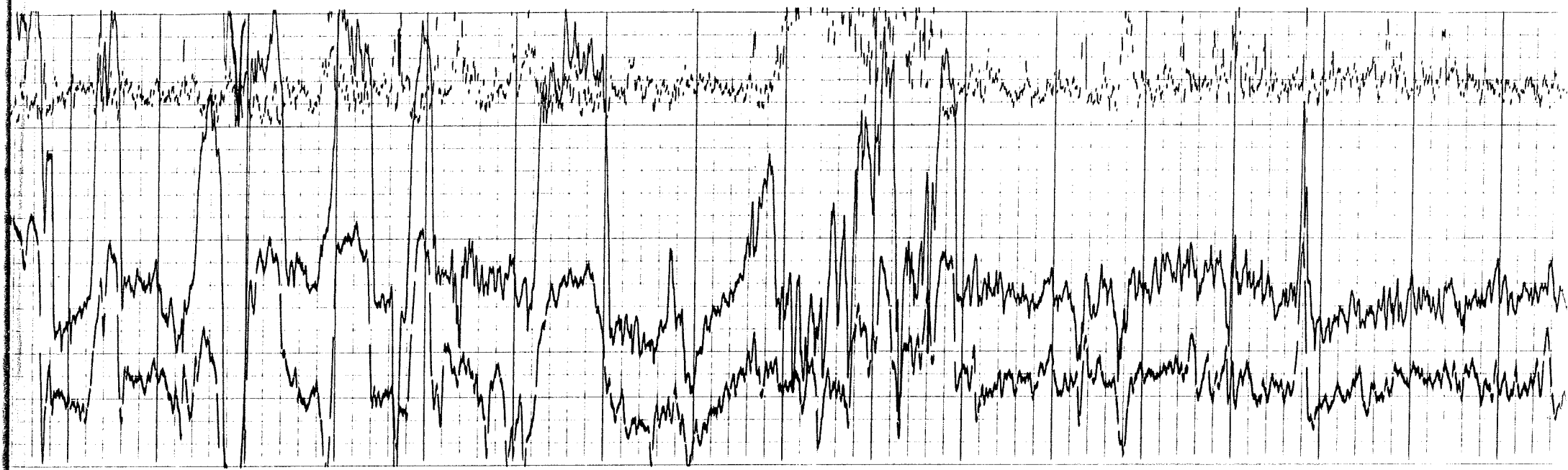
5500

5600

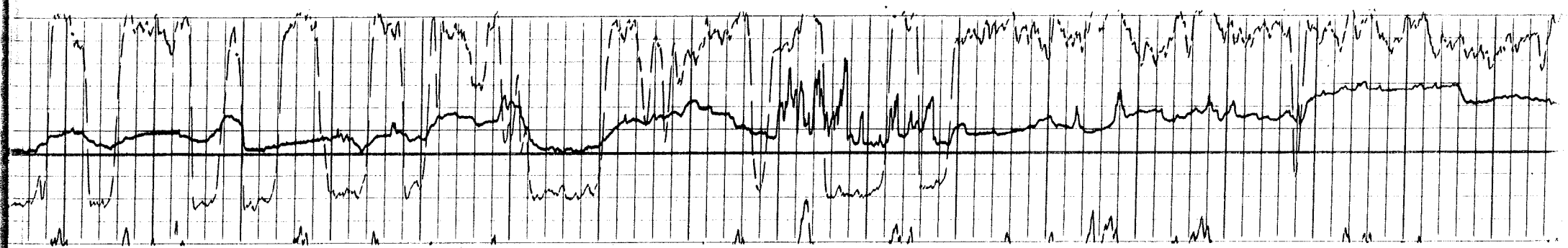
5700

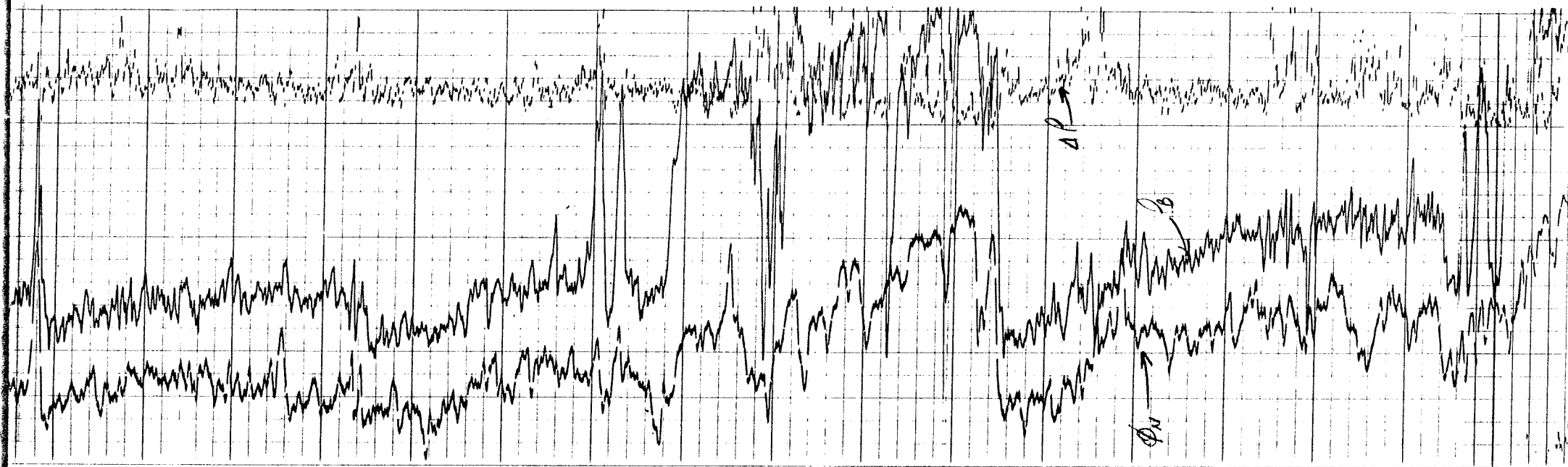
5800



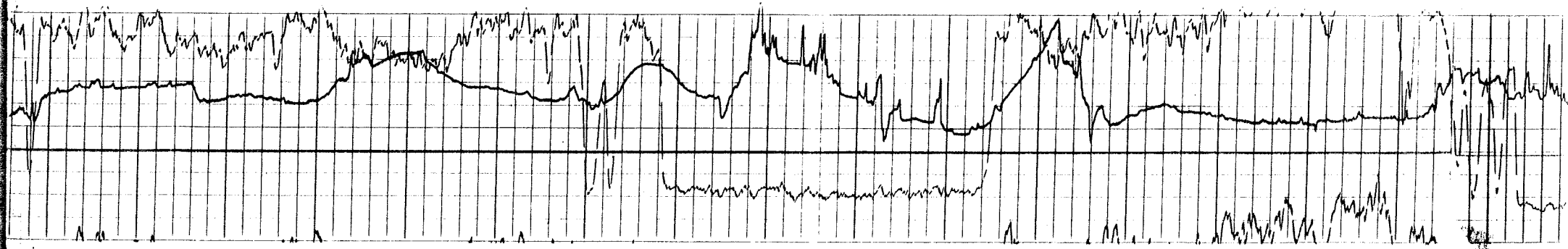


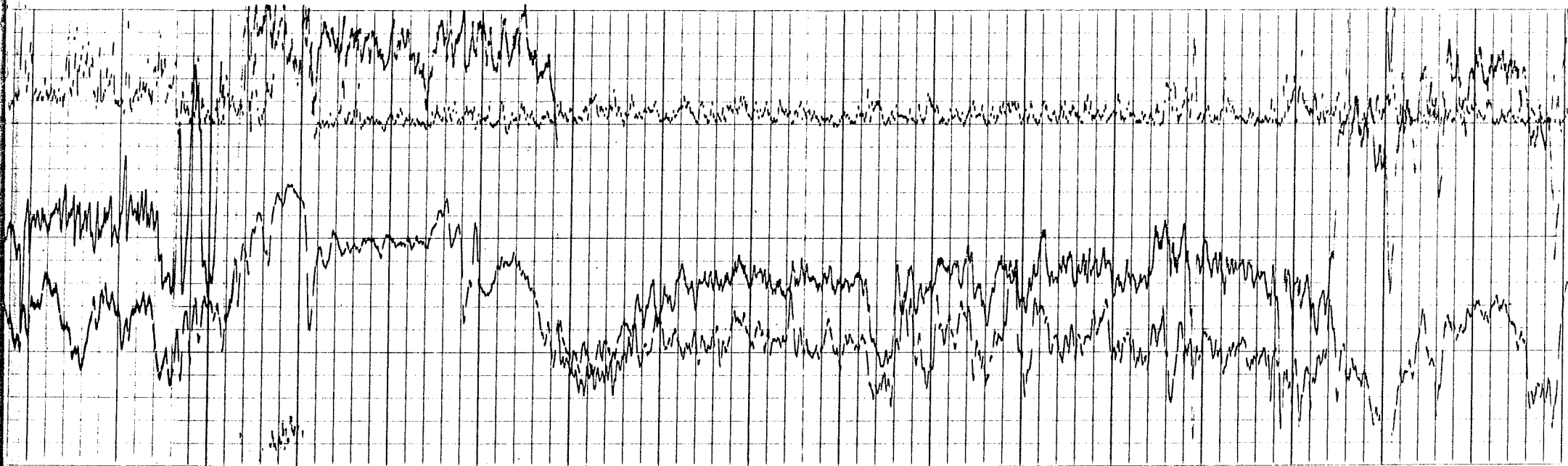
5700 5800 5900 6000 6100 6200 6300 6400 6500





6400 6500 6600 6700 6800 6900 7000 7100 7200





7100

7200

7300

7400

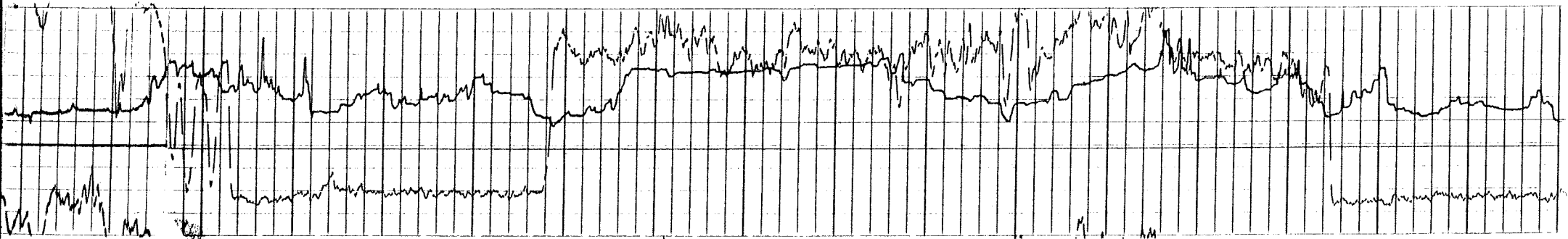
7500

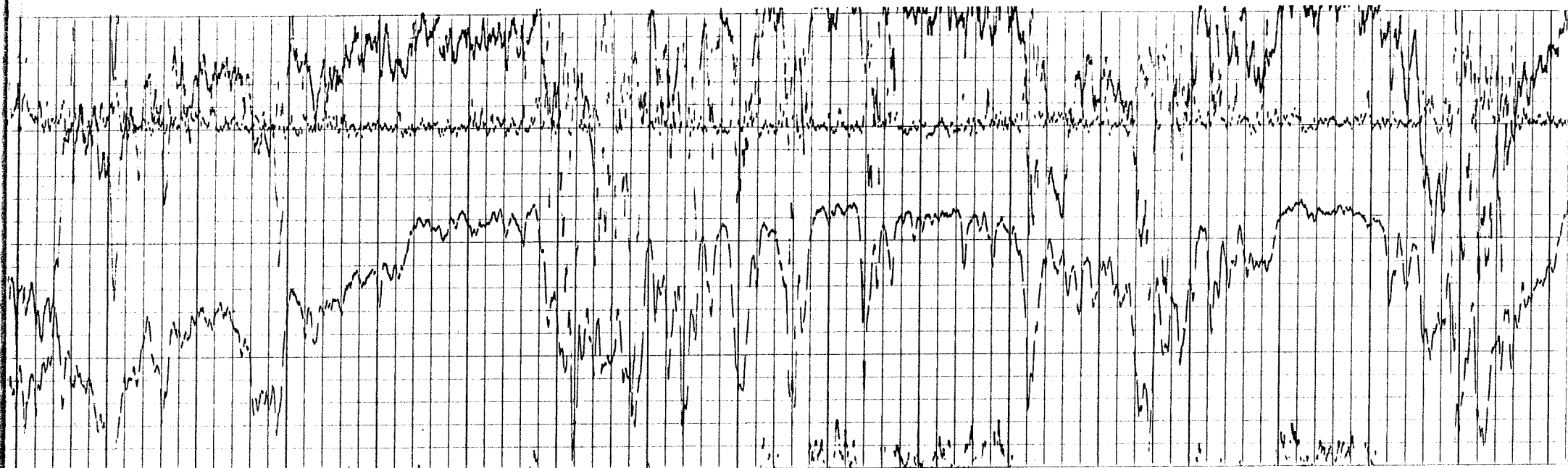
7600

7700

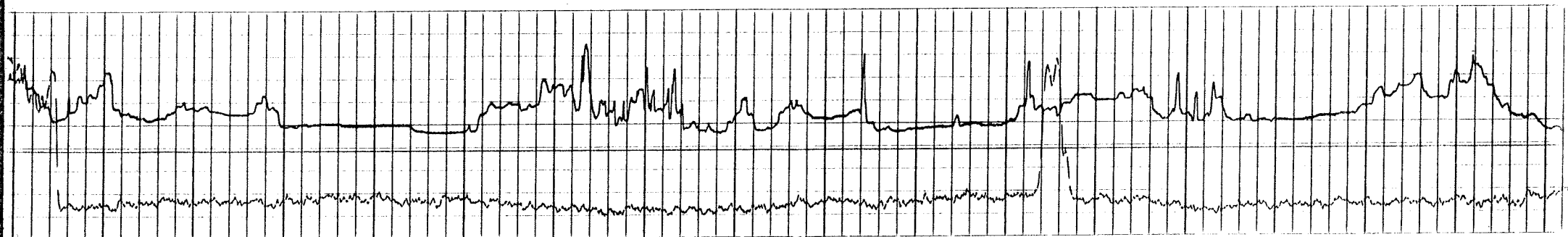
7800

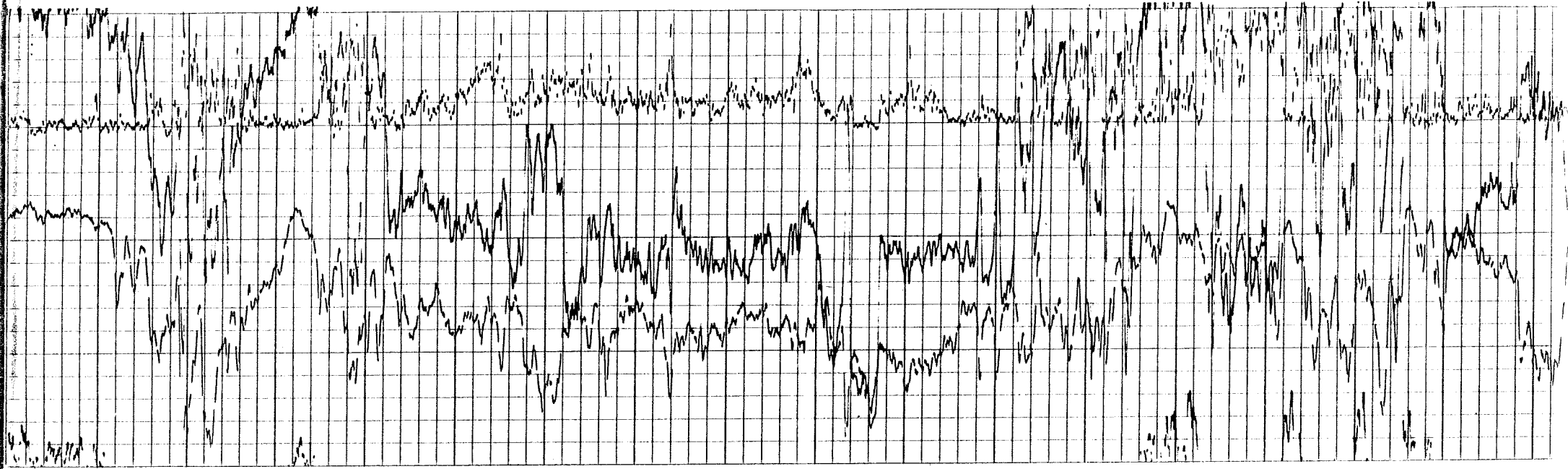
7900



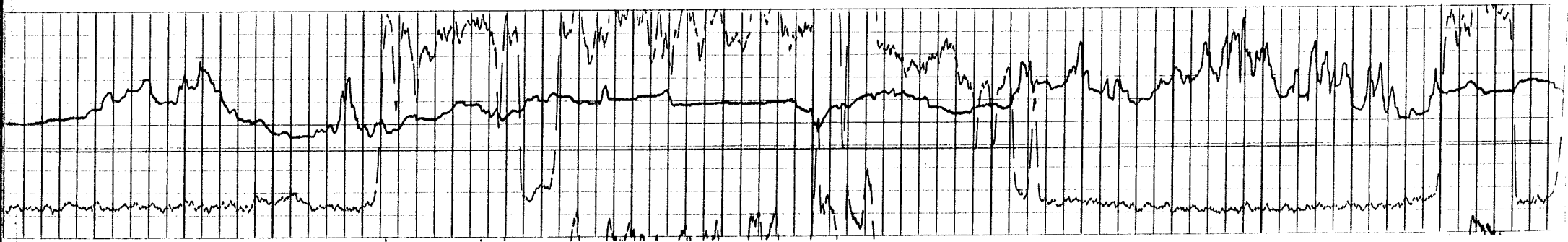


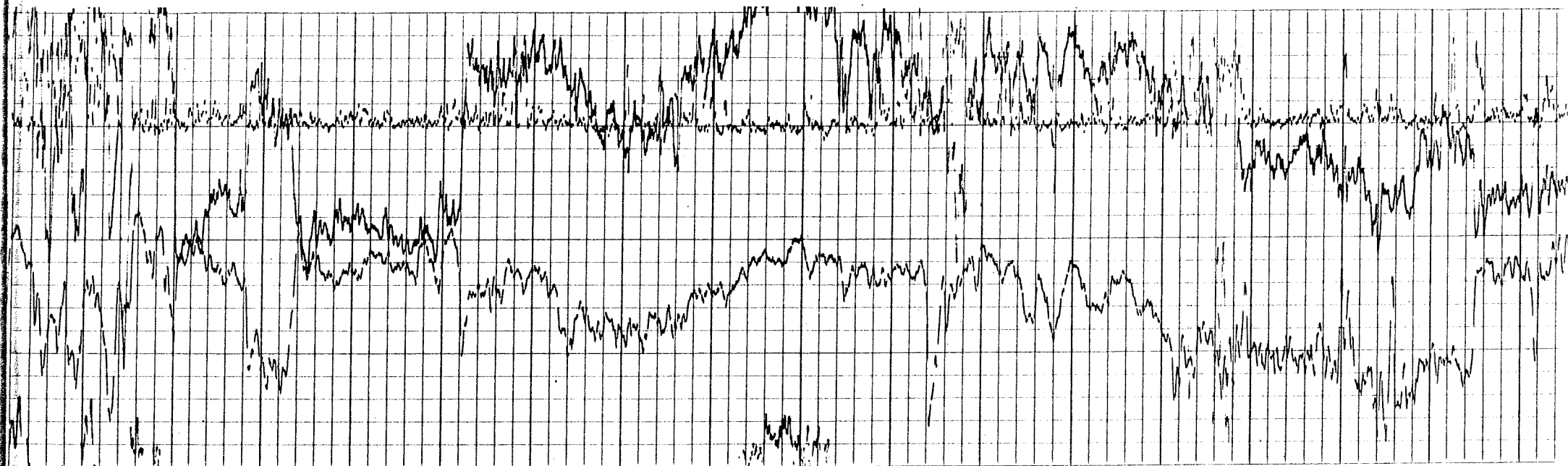
800 7900 8000 8100 8200 8300 8400 8500 8600





00 8600 8700 8800 8900 9000 9100 9200 9300





9300

9400

9500

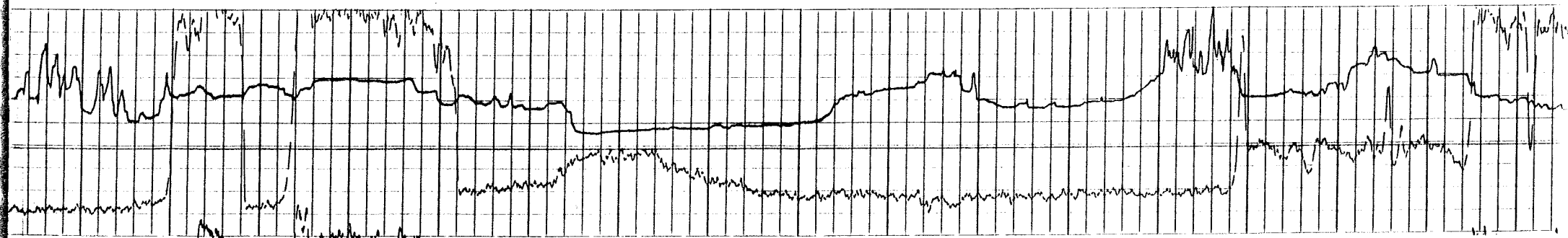
9600

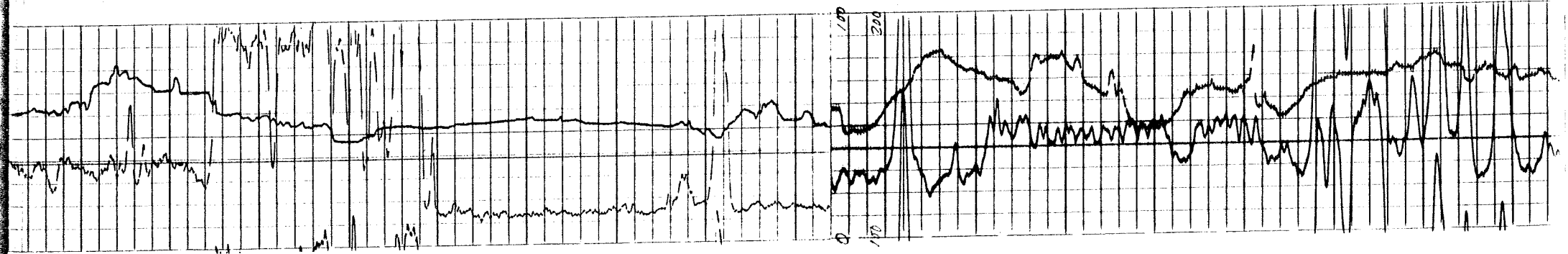
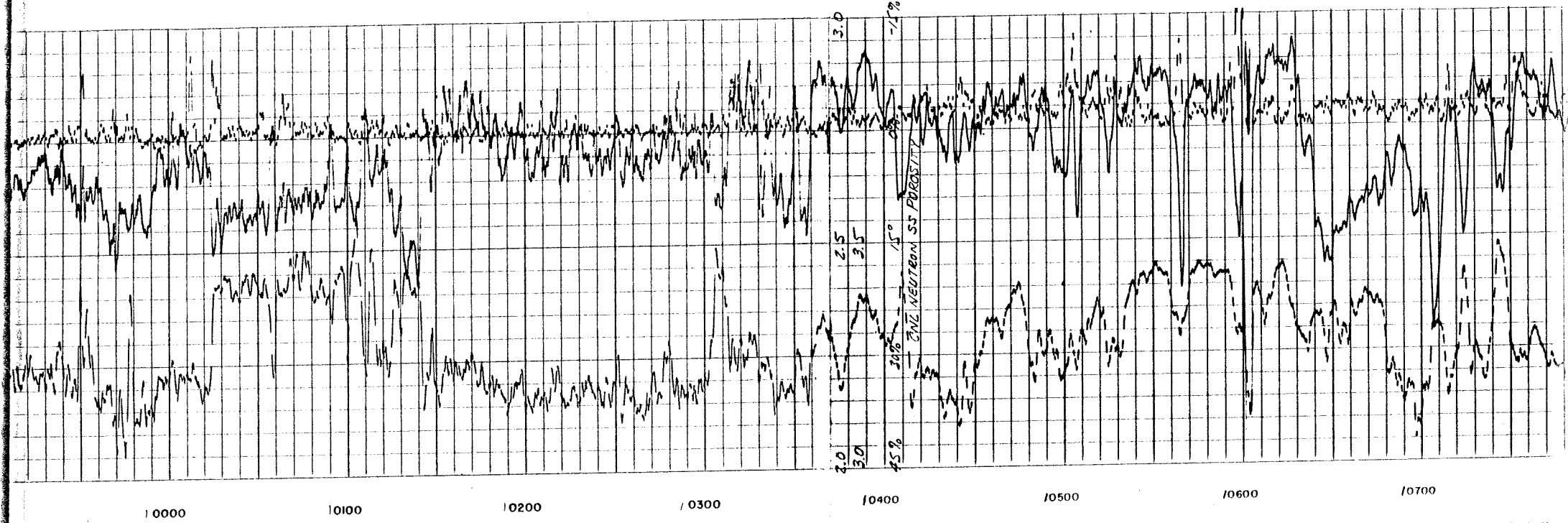
9700

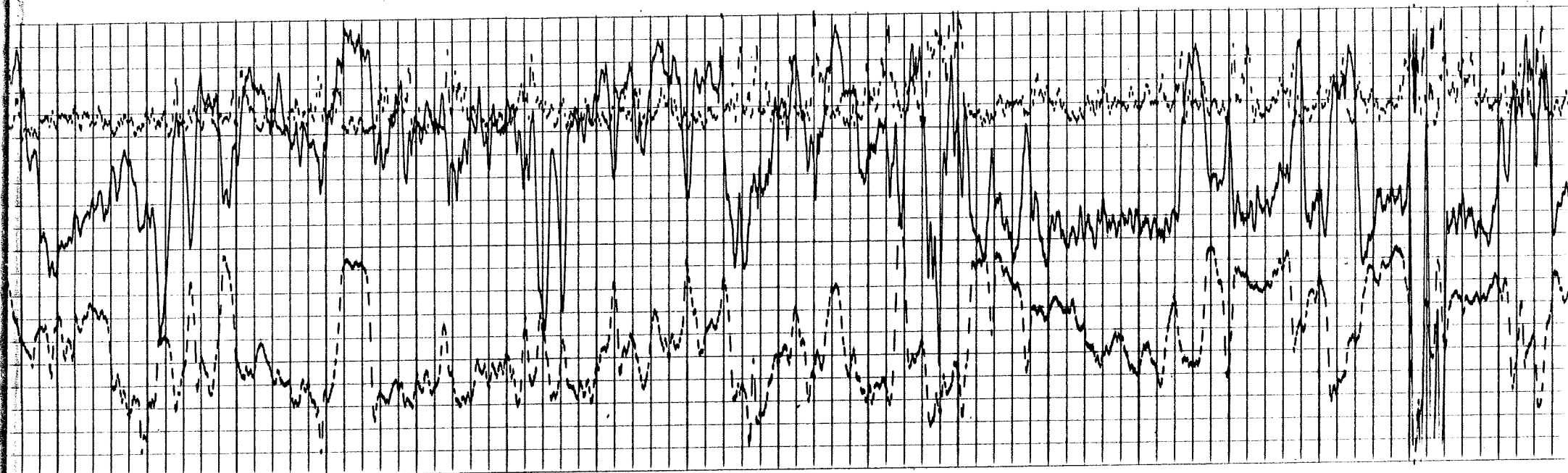
9800

9900

10000







10700

10800

10900

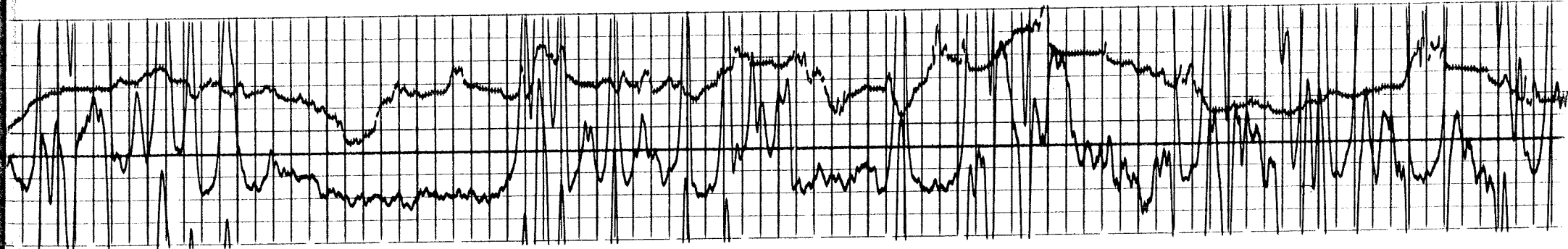
11000

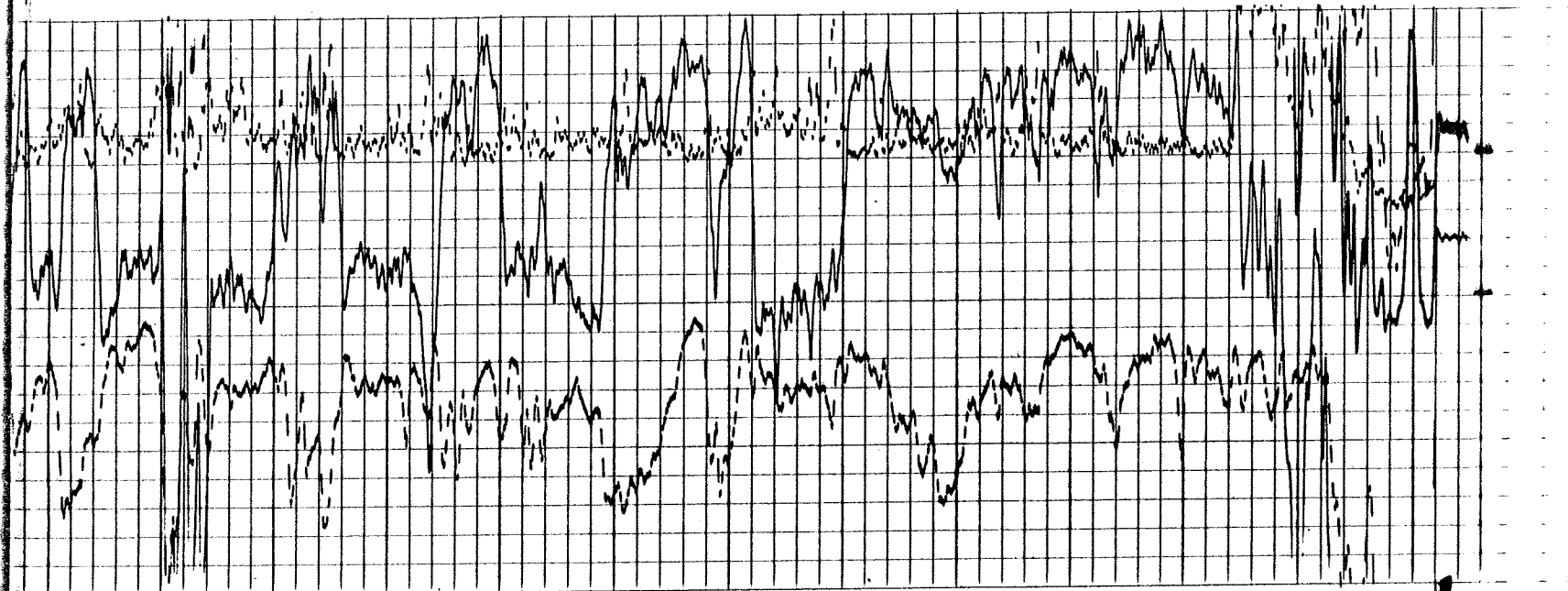
11100

11200

11300

11400





11400

11500

11600

11700

11800

11900

