

GL02701

Reproduced By
Rocky Mountain Well Log Service

MIDLAND, TEXAS 79701



14 REFERENCE # C

1340A
UNIVERSITY OF UTAH
RESEARCH INSTITUTE
EARTH SCIENCE LAB.

Sentry Engineering Company



Denver - Calgary

COMPANY: STANDARD OIL COMPANY OF CALIFORNIA
 WELL: HIGHWAY 1 & I # 1
 FIELD: MIDCOT MOUNTAIN-CALDWELL AREA
 COUNTY: PAVIA STATE: TEXAS
 LOCATION: S. 0 - 24 - T. 6N - R. 5W
 ELEVATION: 2047' KB
 NE-SE-NW
 API 11-075-20001
 401 To 11963' (G.H.)
 DEPTH LOGGED FROM: 11963' To 11935' (RE-DRILL HOLE)
 DATE LOGGED: 3/6/73 - 6/1/73
 CREW CHIEF: AGASIE & STEPHENSON FILE NO:
 DRILL FLUID: GEL TO 11575' FT
 GET LIGHTER 11575' TO 11963' FT
 & REDRILL HOLE

LEGEND

14 FT

CG-CORRECTION GAS
 DTG-DTGS

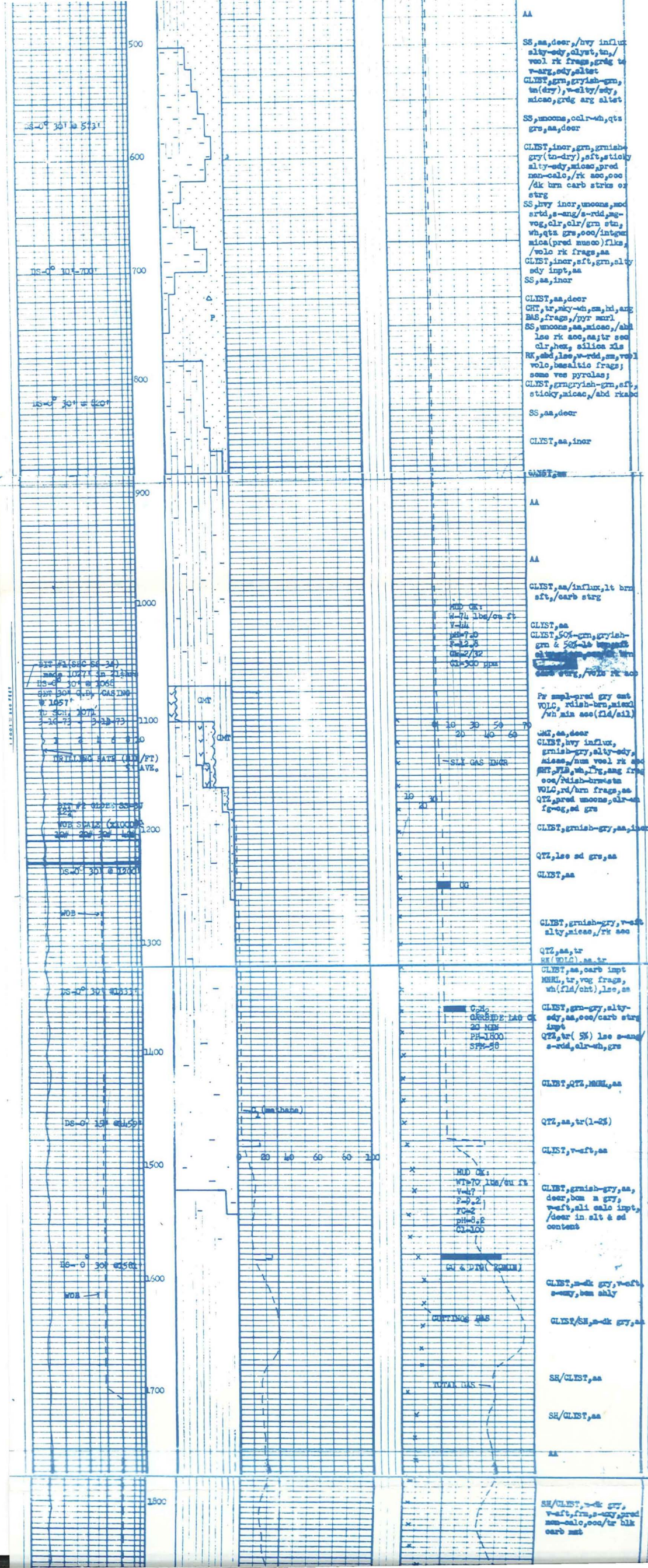
ABBREVIATIONS
 NCB = NEW CORE BIT
 CO = CIRCULATED OUT
 DST = DRILL STEM TEST
 LAT = LOGGED AFTER TRIP
 TG = TRIP GAS
 NR = NO RETURNS
 DS = DIRECTIONAL SURVEY
 DC = DEPTH CORRECTION
 DEPTHS CORRESPOND TO DRILL PIPE MEASUREMENTS

RESISTIVITY, OHM METERS
 Rm = MUD
 Rmc = MUD CAKE
 Rmf = MUD FILTRATE @ 77° F.

MUD DATA
 CK = CAKE THICKNESS 32nds
 V = VISCOSITY API SECONDS
 F = FILTRATE API CC'S
 W = WEIGHT
 TG, CG, DTG S = SALINITY, ppm Cl

LITHOLOGY
 SHALE & CLAYST
 BAS
 FELSITE
 TUFF
 SLIST
 CHEST
 BLISTONE
 P=pyrite

DEPTH	LITH PERCENTAGE	HYDROCARBON ANALYSIS				REMARKS FORMATION DESCRIPTION, MUD DATA, DRILL STEM TESTS, etc
		CHROMATOGRAPH	FILOR	TOTAL GAS & METHANE	CUTTINGS	
100						SS, pred uncons, clr, wh, yal-wh, ag/og, veg, s-ang/s-rdd, qts grs, micac, abd w-rdd rk acc
150						SS, pred lse, medd fra, ck/veg, some grnl fra, vol(rd, grn, brn, blk), ss, pred of volc or plutonic origin
200						SS, lse, clr-wh, qts, ss, /inor in dk rk acc, ooc tr v-dk, sd clus
250						SS, pred lse, grs, ss, /tr ooc hex qts or silic
300						CLIST, sft, calc, alty-edy, tn(dry), grnsh-g (wet)
350						SS, aa
400						RK, abd lse, ss, w-rdd, frags, c-grnl size, pred saltic, volc, rk, som. rdish-brn, pyrolas, ooc/clr xlin
450						SS(QTz), aa, prob artes wtr-bearing
500						SS, uncons, clr-wh, ooc, yalish sta, ag-veg, s-ang/s-rdd, qts, micac, /abd(30%) volc(rd, grn, blk) volc, bas, rk acc, ss, ooc pr ooc, clse, sd clus,
550						SS, mica, rk, aa
600						AA
650						AA
700						AA
750						SS, aa, deer, /hvy influs, alty-edy, alty, tn, /vol rk frags, grd to v-arg, edy, alty
800						CLIST, grn, grysh-grn, tn(dry), v-alty/edy, micac, grd arg alty
850						SS, uncons, oclr-wh, qts grs, aa, deer
900						CLIST, inor, grn, grnsh-gry (tn-dry), sft, sticky, alty-edy, micac, pred non-calc, /rk acc, ooc /dk brn carb strks of strg
950						SS, hvy inor, uncons



DS-0 30' @ 573'

DS-0 30' @ 700'

DS-0 30' @ 820'

DS-0 30' @ 1060'

DS-0 30' @ 1170'

DS-0 30' @ 1330'

DS-0 30' @ 1450'

DS-0 30' @ 1550'

1800

AA
 SS,aa,deer,hvy influt
 alty-edg,clst,tn,
 vol. rk frags,grg to
 v-arg,ed,altst
 CLST,grn,cryst-grn,
 tn(dry),v-alty/ed,
 micao,grg arg altst
 SS,uncoas,clr-wh,qtz
 gr,aa,deer
 CLST,incr,grn,grnsh-
 gry(tn-dry),sft,stick
 alty-edg,micao,prc
 non-calc,rk sec,oc
 /dk brn carb strcs or
 strg
 SS,hvy incr,uncoas,mod
 artd,s-ang/s-rid,sg-
 vog,clr,clr/grn str,
 wh,qtz gr,oc/intgr
 mica(pred musco)flks,
 /vol. rk frags,aa
 CLST,incr,sft,grn,alty
 edy inpt,aa
 SS,aa,incr
 CLST,aa,deer
 CRT,br,sky-wh,sm,hd,ang
 BAS,frags,/pyr mnr
 SS,uncoas,aa,micao,/abd
 lsc rk sec,aa;tr sec
 clr,het, sillca xls
 RK,abd,lsc,w-rid,sm,vol
 volo,basaltic frags;
 some ves pyrolas;
 CLST,grn,cryst-grn,sft,
 sticky,micao,/abd rkab
 SS,aa,deer
 CLST,aa,incr
 CLST,grn
 AA
 AA
 CLST,aa/influt,lt brn
 sft,carb strg
 CLST,aa
 CLST,50%-grn,cryst-
 grn & 50%-lt brn
 case v-arg, /vol. rk sec
 Fr smpl-pred gry ent
 VOLC, rdsh-brn,micacl
 /wh min sec(fld/sil)
 CLST,aa,deer
 CLST,hvy influt,
 grnsh-gry,alty-edg,
 micao,num vol. rk sec
 sft,wh,clr,ang frag
 ooc,whsh-brnstr
 VOLC,rd/hrn frags,aa
 QTZ,pred uncoas,clr-wh
 fg-og,ed grs
 CLST,grnsh-gry,aa,incr
 QTZ,lsc sd grs,aa
 CLST,aa
 CLST,grnsh-gry,v-af
 alty,micao,/rk sec
 QTZ,aa, tr
 RR(VOLC),aa, tr
 CLST,aa,carb inpt
 MMR, tr, fog frags,
 wh(fld/cht),lsc,aa
 CLST,grn-gry,alty-
 edy,aa,oc,carb strg
 imp
 QTZ,br (5%) lsc s-ang/
 s-rid,clr-wh,grs
 CLST,QTZ,MMR,aa
 QTZ,aa, tr(1-2%)
 CLST,v-af,aa
 CLST,grnsh-gry,aa,
 deer,ben a gry,
 v-af,ali calc inpt,
 /deer in sft & sd
 content
 CLST,s-dk gry,v-af,
 s-ang,ben ably
 CLST,SH,s-dk gry,aa
 SH/CLST,aa
 SH/CLST,aa
 aa
 SH/CLST,s-dk gry,
 v-af,frn,s-ang,prc
 non-calc,oc/tr blk
 carb mat

MUD CK:
 WT% LBS/BU FT
 V-7-10
 F-12-2
 PH-13-2
 CL-100

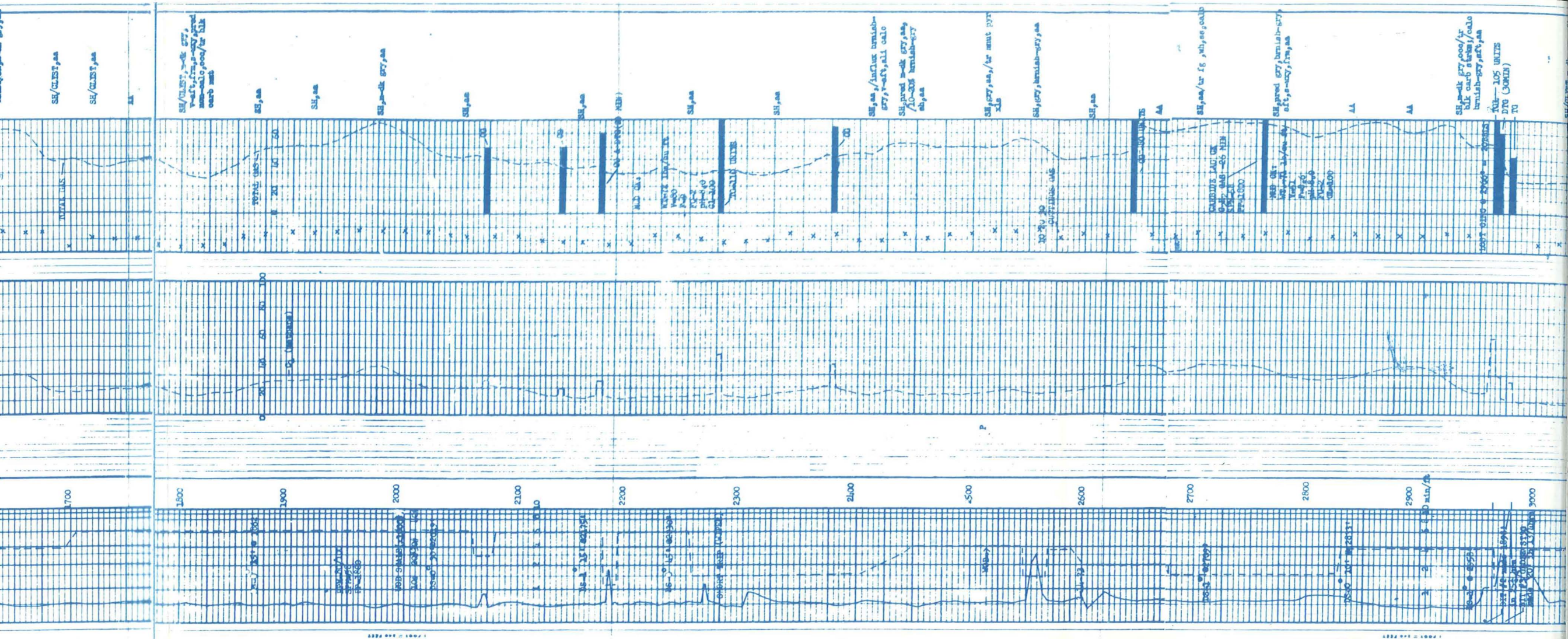
DRILLING RATE (LBS/FT) AVE.

MUD CK:
 WT% LBS/BU FT
 V-7-10
 F-12-2
 PH-13-2
 CL-100

MUD CK:
 WT% LBS/BU FT
 V-7-10
 F-12-2
 PH-13-2
 CL-100

CUTTING GAS

TOTAL GAS



SE/CLASS, aa
SE/CLASS, aa

SE/CLASS, aa
SE/CLASS, aa
SE/CLASS, aa
SE/CLASS, aa
SE/CLASS, aa

SE, aa

SH, aa

SH, aa-05 GRT, aa

SH, aa

SH, aa

SH, aa

SH, aa

SH, aa, /in/Clax hmlab-
GRT, r-act, all calo
SH, prod m-dk GRT, aa
/10-005 hmlab-GRT
sh, aa

SH, GRT, aa, /tr mult GRT
sh

SH, GRT, hmlab-GRT, aa

SH, aa

SH, aa, /tr fs, sh, se, calb

SH, prod GRT, hmlab-GRT
act, r-act, /tr, aa

AA

AA

SH, aa-05 GRT, 000/tr
blk carb shms, /calo
hmlab-GRT, act, aa

AA - LOS UNITS
DTG (CORN)

TOTAL MASS
100 100 100 100

0 20 40 60 80 100
-G (inches)

1700

1800

1900

2000

2100

2200

2300

2400

2500

2600

2700

2800

2900

3000

100 100 100 100

100 100 100 100

100 100 100 100

100 100 100 100

100 100 100 100

100 100 100 100

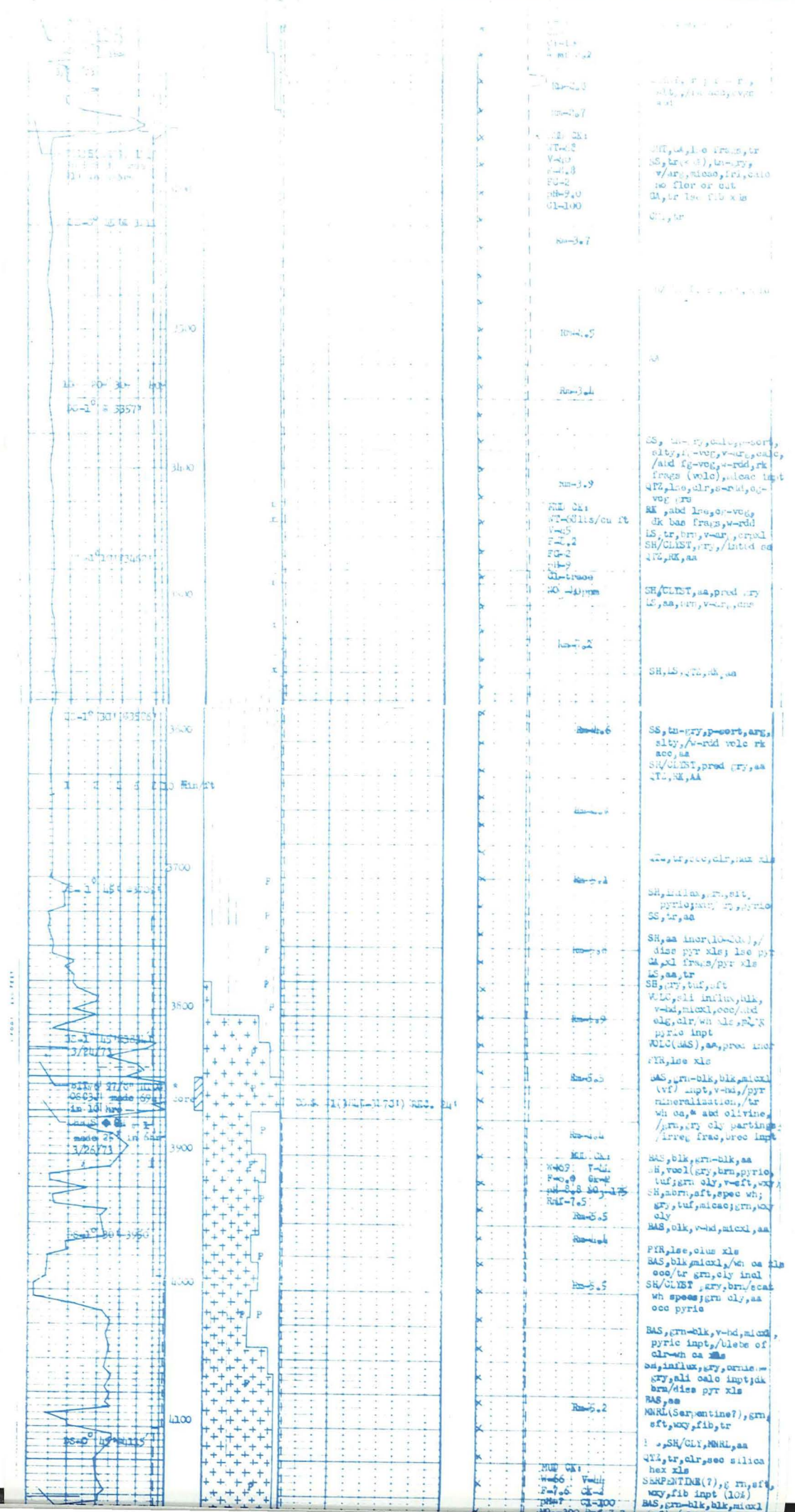
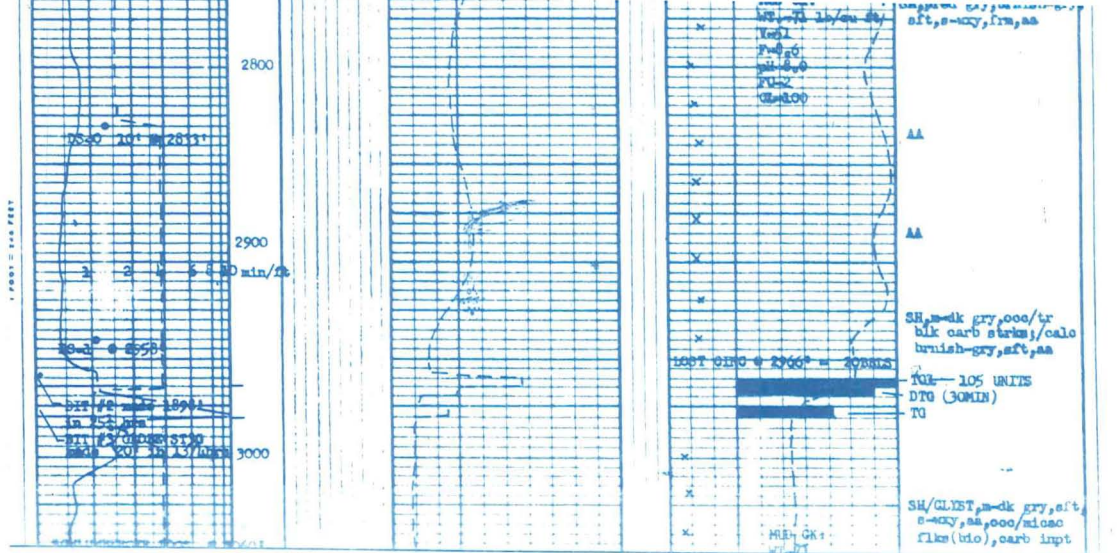
100 100 100 100

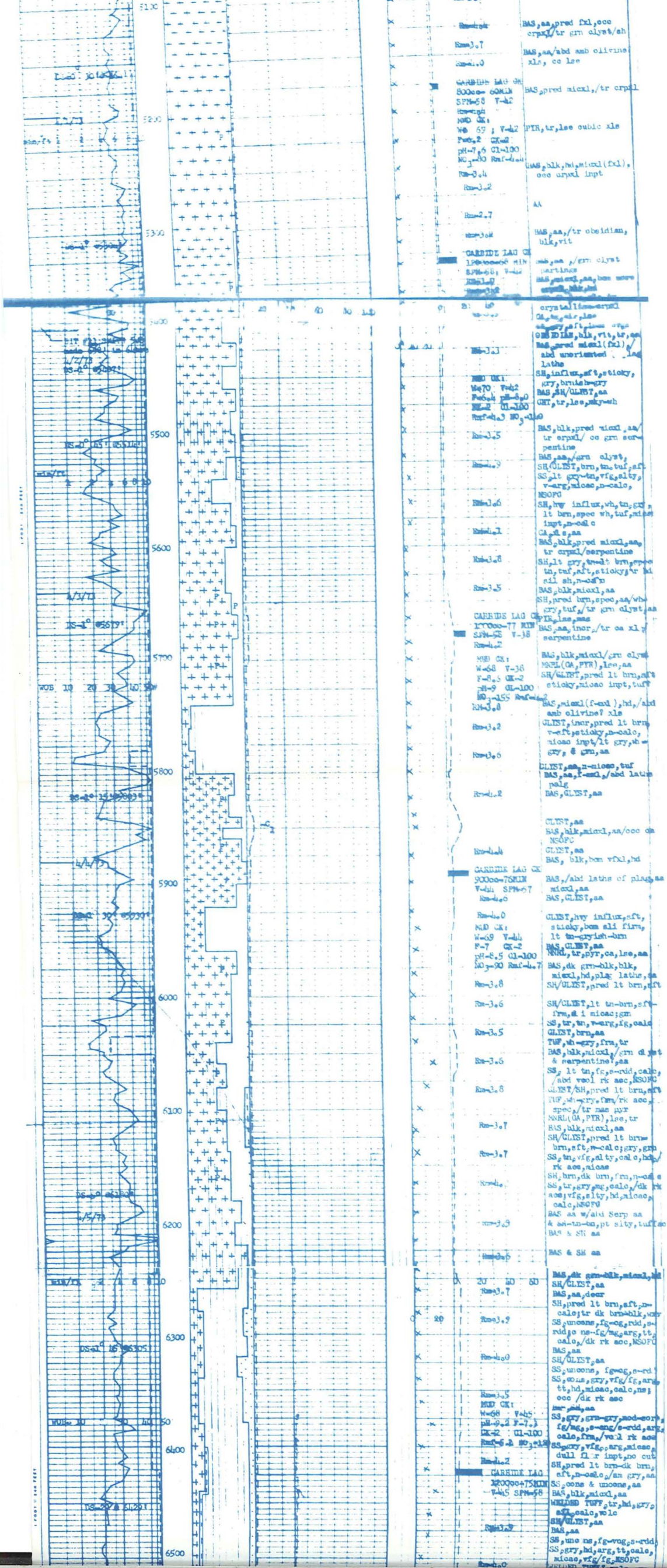
100 100 100 100

100 100 100 100

100 100 100 100

100 100 100 100



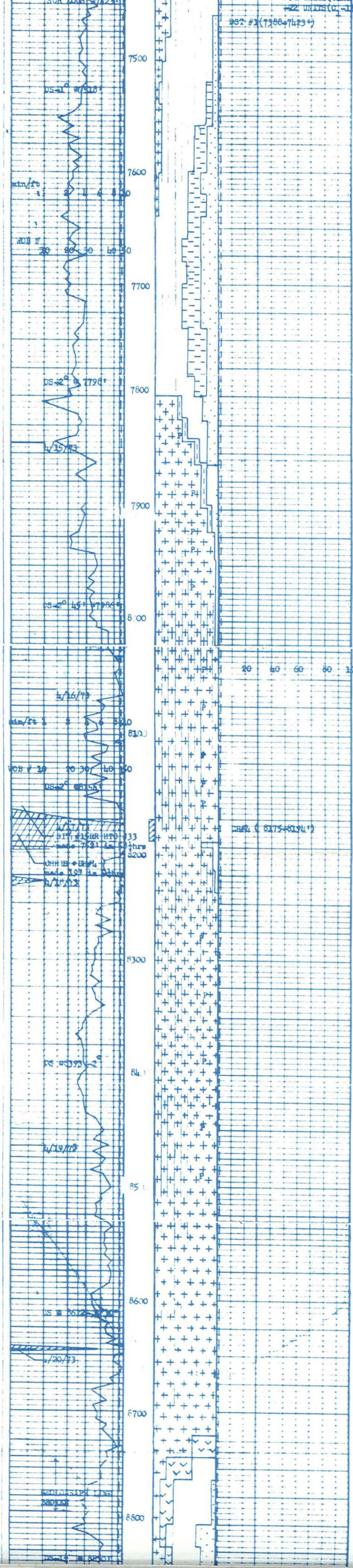


BAS, aa, pred fxl, ooc
 crpt, tr gm oliv, sh
 Rm-3.7
 BAS, aa, abd amb olivine
 xls, co lse
 Rm-3.0
 CARBIDE LAG ON
 8000-60M
 SPM-58 V-42
 MUD CK:
 W-68 V-42
 PH-9.2 F-7.3
 DK-2 QI-100
 R-6.3 NO-3.19
 BAS, blk, hd, micrl (fxl),
 ooc crpt, lmp
 Rm-3.2
 AA
 Rm-2.7
 BAS, aa, tr obsidian,
 blk, vit
 Rm-3.04
 CARBIDE LAG ON
 12000-77M
 SPM-58 V-42
 MUD CK:
 W-68 V-42
 PH-9.2 F-7.3
 DK-2 QI-100
 R-6.3 NO-3.19
 BAS, blk, hd, micrl (fxl),
 ooc crpt, lmp

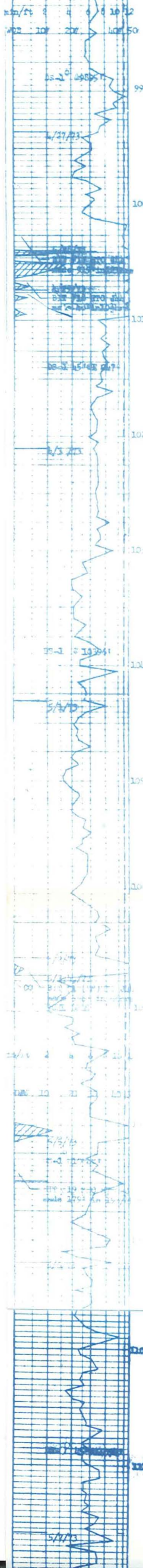
crystalline mineral
 Crpt, tr, lse
 SH, GLIST, blk, vit, tr, aa
 BAS, pred micrl (fxl),
 abd unoriented
 Lathes
 SH, influx, sft, stiocky,
 crpt, brnd, berry
 BAS, blk, GLIST, aa
 CRPT, tr, lse, stiocky
 Rm-3.5
 BAS, blk, pred micrl, aa/
 tr crpt/ co gm ser-
 pentine
 Rm-3.9
 BAS, aa, crn alyst,
 SH, GLIST, brn, tu, tuf, sft
 SS, lt, arg, fg, arg, rdd,
 v-arg, micao, n-calc,
 NSOPC
 Rm-3.6
 SH, hv influx, wh, tu, crpt,
 lt brn, spec wh, tuf, micrl
 lmp, n-calc
 Rm-3.7
 BAS, blk, pred micrl, aa,
 tr crpt/serpentine
 Rm-3.8
 SH, lt, crpt, brnd, berry, spec
 tu, tuf, sft, stiocky, tr
 all sh, n-calc
 Rm-3.5
 BAS, blk, micrl, aa
 SH, pred brn, spec, aa, wh
 crpt, tuf, tr gm alyst, aa
 CRPT, lse, aa
 CARBIDE LAG ON
 12000-77M
 SPM-58 V-42
 MUD CK:
 W-68 V-42
 PH-9.2 F-7.3
 DK-2 QI-100
 R-6.3 NO-3.19
 BAS, aa, micrl (fxl), hd, abd
 amb olivine? xls
 GLIST, incr, pred lt brn,
 v-arg, stiocky, n-calc,
 micao lmp, lt crpt, sh-
 crpt, & gm, aa
 Rm-3.2
 GLIST, aa, n-micao, tuf
 BAS, aa, f-calc, abd lathes
 calc
 BAS, GLIST, aa
 Rm-3.2
 GLIST, aa
 BAS, blk, micrl, aa/ ooc on
 NSOPC
 GLIST, aa
 BAS, blk, brn vfxl, hd

CARBIDE LAG ON
 9000-75M
 V-42 SPM-58 V-42
 Rm-4.0
 BAS, abd lathes of plagioclase
 micrl, aa
 BAS, GLIST, aa
 Rm-4.0
 GLIST, hv influx, sft,
 stiocky, brn all firm,
 lt tu-crysh-brn
 MUD CK:
 W-69 V-44
 PH-8.5 F-7.3
 DK-2 QI-100
 R-6.3 NO-3.19
 BAS, dk gm-blk, blk,
 micrl, hd, blk lathes, aa
 SH/ GLIST, pred lt brn, sft
 Rm-3.8
 SH/ GLIST, lt tu-brn, sft-
 frm, & i micao, gm
 SS, tr, br, v-arg, fg, calc
 GLIST, brn, aa
 Rm-3.5
 TUF, wh-cry, frm, tr
 BAS, blk, micrl, gm d pt
 & serpentine, aa
 Rm-3.6
 SS, lt tu, fg, s-rdd, calc,
 abd veol rk acc, NSOPC
 Rm-3.8
 GLIST, SH, pred lt brn, sft
 TUF, wh-cry, frm, rk acc,
 spec, tr nae lyp
 NRRL (QA, PTR), lse, tr
 Rm-3.7
 BAS, blk, micrl, aa
 SH/ GLIST, pred lt brn,
 brn, sft, n-calc, arg, gm
 SS, tu, fg, al ty, calc, hd,
 rk acc, micao
 Rm-3.7
 SH, brn, dk brn, frm, n-calc
 SS, tr, arg, fg, calc, dk rk
 acc, vfg, sly, hd, micao,
 calc, NSOPC
 Rm-3.5
 BAS, aa w/abd Serp aa
 & sh-un-lmp, pt sity, tuff, aa
 BAS & SH aa
 Rm-3.5
 BAS & SH aa

BAS, dk gm-blk, micrl, hd
 SH/ GLIST, aa
 Rm-3.7
 BAS, aa, decr
 SH, pred lt brn, sft, n-
 calc, tr dk brn-blk, wh
 SS, uncons, fg, arg, rdd, s-
 rdd, no-fg, micao, arg, lt,
 calc, dk rk acc, NSOPC
 BAS, aa
 SH/ GLIST, aa
 SS, uncons, fg, arg, s-rdd,
 SS, uncons, arg, vfg, arg,
 tt, hd, micao, calc, ns,
 ooc/ dk rk acc
 Rm-3.5
 MUD CK:
 W-68 V-45
 PH-9.2 F-7.3
 DK-2 QI-100
 R-6.3 NO-3.19
 BAS, blk, micrl, aa
 CARBIDE LAG
 12000-75M
 V-42 SPM-58 V-42
 MUD CK:
 W-68 V-45
 PH-9.2 F-7.3
 DK-2 QI-100
 R-6.3 NO-3.19
 BAS, blk, micrl, aa
 SH/ GLIST, aa
 BAS, aa
 SH, uncons, fg, v-arg, s-rdd,
 SS, arg, hd, arg, tt, calc,
 micao, vfg, fg, NSOPC



Unit	Symbol	Description
DS-1	Star	SH, brn-dk brn, ool, f, dias, pyr xls, gry, grayish-brn
DS-2	Star	SS, gr, ish, sh, fg, mg, pred, ncal, o, dk rk acc, aa
DS-3	Star	SS, gr, ish, sh, fg, mg, pred, ncal, o, dk rk acc, aa
DS-4	Star	SS, gr, ish, sh, fg, mg, pred, ncal, o, dk rk acc, aa
DS-5	Star	SS, gr, ish, sh, fg, mg, pred, ncal, o, dk rk acc, aa
DS-6	Star	SS, gr, ish, sh, fg, mg, pred, ncal, o, dk rk acc, aa
DS-7	Star	SS, gr, ish, sh, fg, mg, pred, ncal, o, dk rk acc, aa
DS-8	Star	SS, gr, ish, sh, fg, mg, pred, ncal, o, dk rk acc, aa
DS-9	Star	SS, gr, ish, sh, fg, mg, pred, ncal, o, dk rk acc, aa
DS-10	Star	SS, gr, ish, sh, fg, mg, pred, ncal, o, dk rk acc, aa
GARBIDE LAG	Star	SH, brn-dk brn, ool, f, dias, pyr xls, gry, grayish-brn
...



UNCONFORMABLE
NOT WORKING
MOST MRS (X, Y, Z)
APPROX. 8-0000

UNCONFORMABLE
NOT WORKING
APPROX. 10-0000

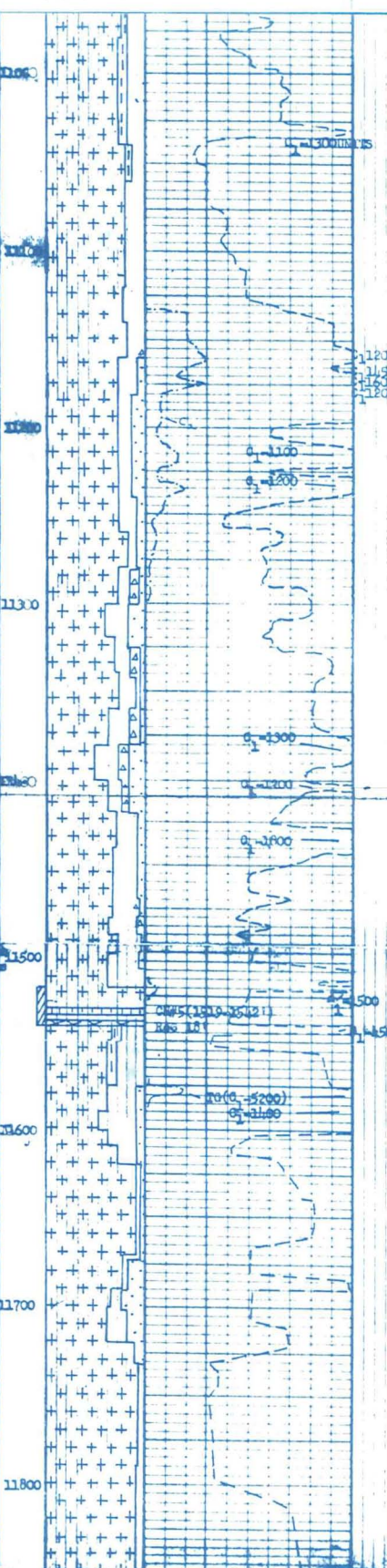
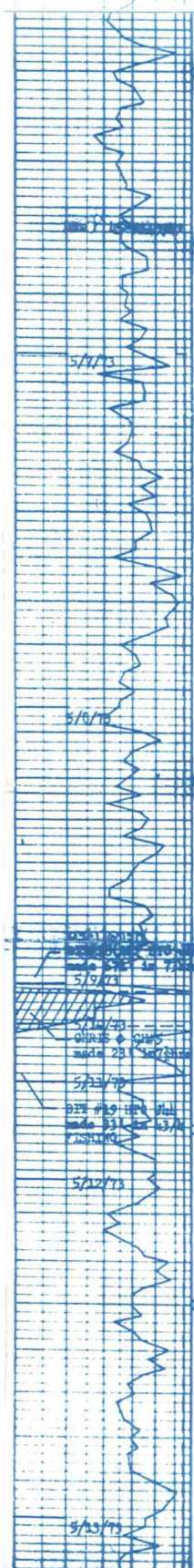
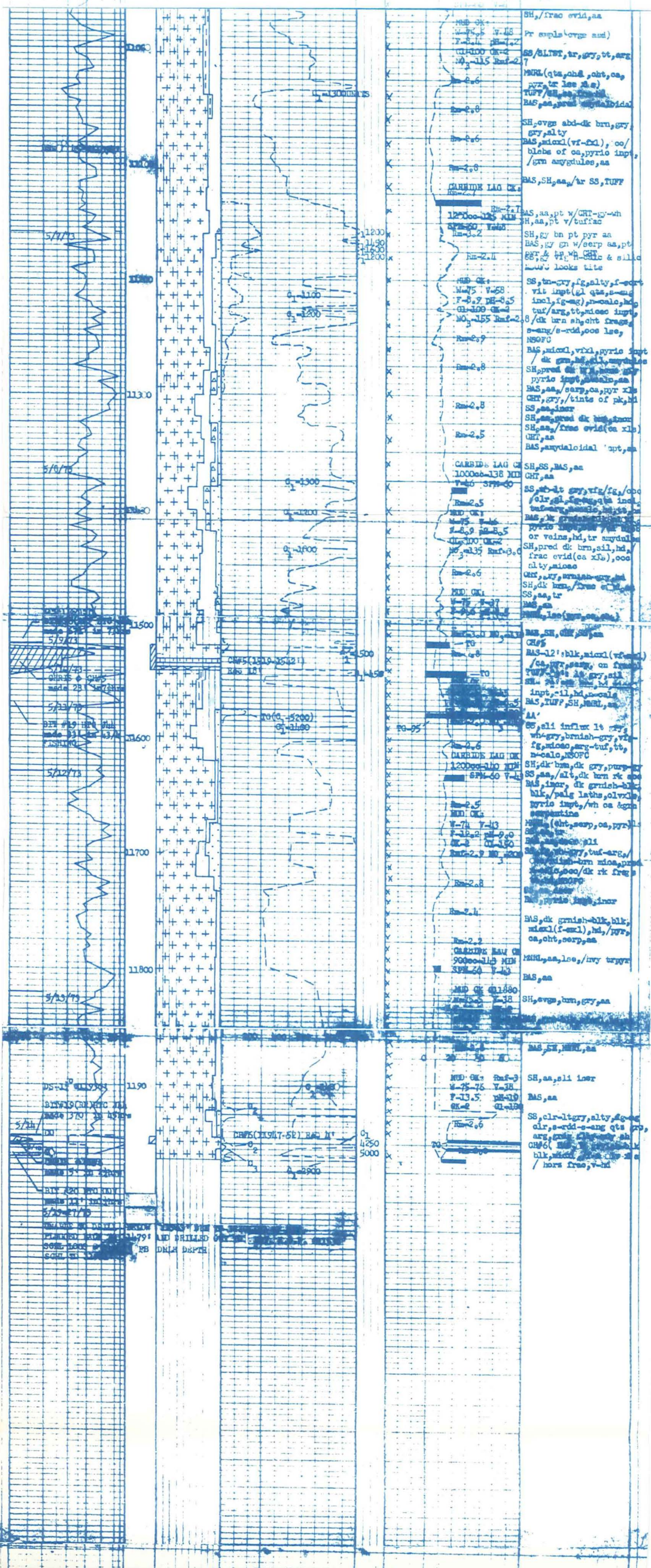
UNCONFORMABLE
NOT WORKING
APPROX. 11-0000

UNCONFORMABLE
NOT WORKING
APPROX. 12-0000

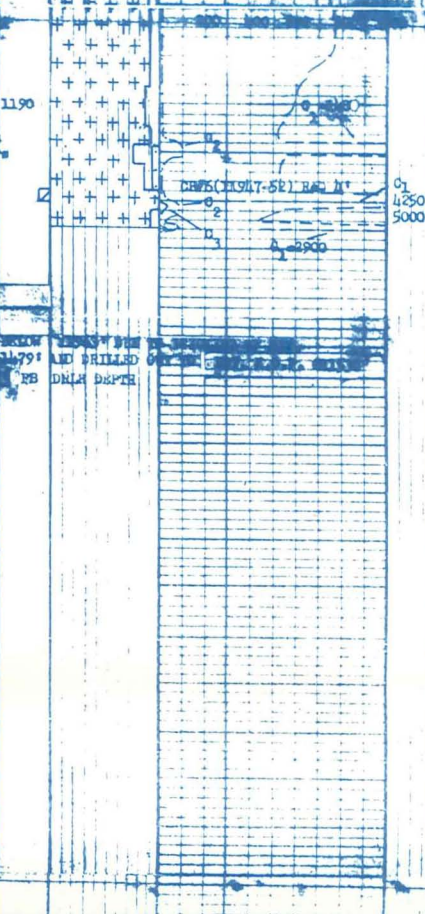
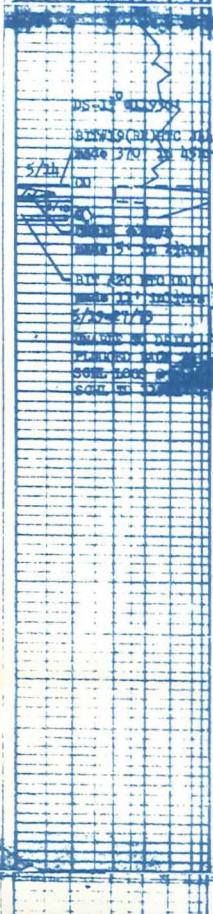
- Rm-3.7 BAS, blk, aa
- AA
- Rm-3.6 BAS, dk grn-blk, micrd
- SH, chl imp, n-calc
- BAS, aa
- Rm-3.5 SH, dk brn, gry, n-calc, pyric imp, frs-blk, sph (n-calc, ca) ool
- SPL, chl, n-calc, aa
- pyric imp
- SH, dk brn, gry
- SH, dk brn, gry, n-calc, aa
- Rm-3.4 W-7.5 V-0.8 F-0.8 G-2 Rm-3.4 W-7.5 V-0.8 F-0.8 G-2
- SH, dk brn, gry, n-calc, aa
- Rm-3.3 SH, dk brn, gry, n-calc, aa
- Rm-3.2 SH, dk brn, gry, n-calc, aa
- Rm-3.1 SH, dk brn, gry, n-calc, aa
- Rm-3.0 SH, dk brn, gry, n-calc, aa
- Rm-2.9 SH, dk brn, gry, n-calc, aa
- Rm-2.8 SH, dk brn, gry, n-calc, aa
- Rm-2.7 SH, dk brn, gry, n-calc, aa
- Rm-2.6 SH, dk brn, gry, n-calc, aa
- Rm-2.5 SH, dk brn, gry, n-calc, aa
- Rm-2.4 SH, dk brn, gry, n-calc, aa
- Rm-2.3 SH, dk brn, gry, n-calc, aa
- Rm-2.2 SH, dk brn, gry, n-calc, aa
- Rm-2.1 SH, dk brn, gry, n-calc, aa
- Rm-2.0 SH, dk brn, gry, n-calc, aa
- Rm-1.9 SH, dk brn, gry, n-calc, aa
- Rm-1.8 SH, dk brn, gry, n-calc, aa
- Rm-1.7 SH, dk brn, gry, n-calc, aa
- Rm-1.6 SH, dk brn, gry, n-calc, aa
- Rm-1.5 SH, dk brn, gry, n-calc, aa
- Rm-1.4 SH, dk brn, gry, n-calc, aa
- Rm-1.3 SH, dk brn, gry, n-calc, aa
- Rm-1.2 SH, dk brn, gry, n-calc, aa
- Rm-1.1 SH, dk brn, gry, n-calc, aa
- Rm-1.0 SH, dk brn, gry, n-calc, aa
- Rm-0.9 SH, dk brn, gry, n-calc, aa
- Rm-0.8 SH, dk brn, gry, n-calc, aa
- Rm-0.7 SH, dk brn, gry, n-calc, aa
- Rm-0.6 SH, dk brn, gry, n-calc, aa
- Rm-0.5 SH, dk brn, gry, n-calc, aa
- Rm-0.4 SH, dk brn, gry, n-calc, aa
- Rm-0.3 SH, dk brn, gry, n-calc, aa
- Rm-0.2 SH, dk brn, gry, n-calc, aa
- Rm-0.1 SH, dk brn, gry, n-calc, aa
- Rm-0.0 SH, dk brn, gry, n-calc, aa

UNCONFORMABLE
NOT WORKING
APPROX. 10000

UNCONFORMABLE
NOT WORKING
APPROX. 11000



SH, /frac ovid, aa
Pr expts (ovgs and)
SS, SLT, ar, gry, vt, arg
MRL (qts, chl, oht, ca,
pyr, tr les s.s.)
TUFT, SH, aa, fms
BAS, aa, prms, amygdaloidal
SH, ovgs abd-dk brn, gry,
gry, alty
BAS, micl (v-cl), oo/
blobs of ca, pyric imp,
/grn amygdulose, aa
BAS, SH, aa, /ar SS, TUFT
12000-125 MIN
H, aa, pt v/tuffac
SH, gy bn pt pyr aa
BAS, gy gn w/serp aa, pt
EGT, & H, H, CHC & silic
looks like
SS, bn-cry, lg, alty, f-ecr
vit imp (qts, s-ang
incl, f-ang), s-calc, hq
tu/arg, vt, micl imp,
o/dk brn sh, oht drags
s-ang/s-rdd, ooc les,
NSOFC
BAS, micl, vcl, pyric imp
/dk grn, hq, sil, amygdulose
SH, pred dk brn, gry
pyric imp, amygdulose
BAS, aa, sery, ca, pyr xls
GRT, gry, /tints of pk, h
SS, aa, inar
SH, aa, pred dk brn, s-ang
SH, aa, /frac ovid (ca xls)
GRT, aa
BAS, amygdaloidal 'apt, aa
CARBIDE LAG CR
10000-130 MIN
GRT, aa
SS, s-lt gry, vt, fca, ooc
/clr, sil, s-ang, qts incl,
s-ang, amygdulose, hq, ss, aa
BAS, dk, granitic, hq, ss, aa
pyric imp, amygdulose, /ar
or veins, hq, tr amygdulose
SH, pred dk brn, sil, hq,
frac ovid (ca xls), ooc
alty, alone
GRT, gry, /tints of pk, h
SH, dk brn, /frac ovid (ca xls)
SS, aa, tr
BAS, aa
BAS, SH, GRT, aa
GRT, aa
BAS-12' blk, micl (v-cl),
/ca, vt, s-ang, on fms
TUFT, SH, aa, fms
SH, aa, fms, hq, hq
imp, sil, hq, s-calc
BAS, TUFT, SH, hq, aa
AA
SS, all infus lt gry
wh-cry, brnsh-gry, vt,
fg, micl, sery, tuft, vt,
s-calc, NSOFC
SH, dk brn, dk gry, purp-gry
SS, aa, /lt, dk brn rk ooc
BAS, inar, dk grnsh-blk,
blk, /pals laths, oliv, chl,
pyric imp, /wh ca & grn
serpentine
Hq, (sh, sery, ca, pyr),
BAS, aa
BAS, aa, sery, vt-arg,
ca, grnsh-brn micl, pred
s-ang, ooc/dk rk fms
BAS, aa
BAS, pyric imp, inar
BAS, dk grnsh-blk, blk,
micl (f-excl), hq, /vvt,
ca, oht, sery, aa
MIN, aa, les, /inv tryp
BAS, aa
SH, ovgs, brn, gry, aa
BAS, SH, hq, aa
SH, aa, sil inar
BAS, aa
SS, clr-lt gry, alty, s-ang
clr, s-rdd-s-ang qts, fms,
arg, grn, amygdulose, hq
CHC, hq, hq, hq, hq, hq
blk, micl, hq, hq, hq, hq
/hars fms, v-cl



SH, /frac ovid, aa
Pr expts (ovgs and)
SS, SLT, ar, gry, vt, arg
MRL (qts, chl, oht, ca,
pyr, tr les s.s.)
TUFT, SH, aa, fms
BAS, aa, prms, amygdaloidal
SH, ovgs abd-dk brn, gry,
gry, alty
BAS, micl (v-cl), oo/
blobs of ca, pyric imp,
/grn amygdulose, aa
BAS, SH, aa, /ar SS, TUFT
12000-125 MIN
H, aa, pt v/tuffac
SH, gy bn pt pyr aa
BAS, gy gn w/serp aa, pt
EGT, & H, H, CHC & silic
looks like
SS, bn-cry, lg, alty, f-ecr
vit imp (qts, s-ang
incl, f-ang), s-calc, hq
tu/arg, vt, micl imp,
o/dk brn sh, oht drags
s-ang/s-rdd, ooc les,
NSOFC
BAS, micl, vcl, pyric imp
/dk grn, hq, sil, amygdulose
SH, pred dk brn, gry
pyric imp, amygdulose
BAS, aa, sery, ca, pyr xls
GRT, gry, /tints of pk, h
SS, aa, inar
SH, aa, pred dk brn, s-ang
SH, aa, /frac ovid (ca xls)
GRT, aa
BAS, amygdaloidal 'apt, aa
CARBIDE LAG CR
10000-130 MIN
GRT, aa
SS, s-lt gry, vt, fca, ooc
/clr, sil, s-ang, qts incl,
s-ang, amygdulose, hq, ss, aa
BAS, dk, granitic, hq, ss, aa
pyric imp, amygdulose, /ar
or veins, hq, tr amygdulose
SH, pred dk brn, sil, hq,
frac ovid (ca xls), ooc
alty, alone
GRT, gry, /tints of pk, h
SH, dk brn, /frac ovid (ca xls)
SS, aa, tr
BAS, aa
BAS, SH, GRT, aa
GRT, aa
BAS-12' blk, micl (v-cl),
/ca, vt, s-ang, on fms
TUFT, SH, aa, fms
SH, aa, fms, hq, hq
imp, sil, hq, s-calc
BAS, TUFT, SH, hq, aa
AA
SS, all infus lt gry
wh-cry, brnsh-gry, vt,
fg, micl, sery, tuft, vt,
s-calc, NSOFC
SH, dk brn, dk gry, purp-gry
SS, aa, /lt, dk brn rk ooc
BAS, inar, dk grnsh-blk,
blk, /pals laths, oliv, chl,
pyric imp, /wh ca & grn
serpentine
Hq, (sh, sery, ca, pyr),
BAS, aa
BAS, aa, sery, vt-arg,
ca, grnsh-brn micl, pred
s-ang, ooc/dk rk fms
BAS, aa
BAS, pyric imp, inar
BAS, dk grnsh-blk, blk,
micl (f-excl), hq, /vvt,
ca, oht, sery, aa
MIN, aa, les, /inv tryp
BAS, aa
SH, ovgs, brn, gry, aa
BAS, SH, hq, aa
SH, aa, sil inar
BAS, aa
SS, clr-lt gry, alty, s-ang
clr, s-rdd-s-ang qts, fms,
arg, grn, amygdulose, hq
CHC, hq, hq, hq, hq, hq
blk, micl, hq, hq, hq, hq
/hars fms, v-cl

