		Compensated Neutron					
FILE NO. R-406		COMPANY B.F.E.C.-E.R.D.A.					
WELL CARSON SINK #1		FIELD WILDCAT					
COUNTY CHURCHILL STATE NEVADA		LOCATION: CENTER OF SEC. 4 OF SEC. 4 SEC 16 TWP 19N RGE 27E					
Permanent Datum GROUND LEVEL Elev. 4057		Other Services DIFL/CDL SPECTRALOG PROX. MIN. BHC/TEMP.					
Log Measured from R.K.B. 25 Ft. Above Permanent Datum		Elevations: KB 4082 DF 4080 GL 4057					
Drilling Measured from R.K.B.		Date 3/1/77					
Run No. ONE		Type Log COMP. NEUT.					
Depth-Driller 8472		Depth-Logger 8362					
Bottom Logged Interval 8360		Top Logged Interval 698					
Type Fluid in Hole CHEM GEL		Salinity Ppm Cl.					
Density Lb./Gal. 9.0+		Level 30'					
Max. Rec. Temp. Deg. F 298		Opr. Rig Time 66 HOURS					
Equip. No. and Location 6089 RSVLT.		Recorded By MCGALL					
Witnessed By MR. CALLIHAN & MR. HORTON		Run No. ONE					
Bore Hole Record		Casing Record					
Run No.	Bit	From	To	Size	Wgt.	From	To
ONE	8 3/4	699	8472	9 5/8	37	SURFACE	699

GL02870
1 of 4

Reproduced By
Electrical Log Services
MIDLAND, TEXAS 79701

REFERENCE K 9400F



19 COMPLETION RECORD

SPUD DATE _____

COMP DATE _____

DST RECORD _____

API NO. _____

CASING RECORD _____

PERFORATING RECORD _____

ACID. FRAC SHOT _____

IP _____

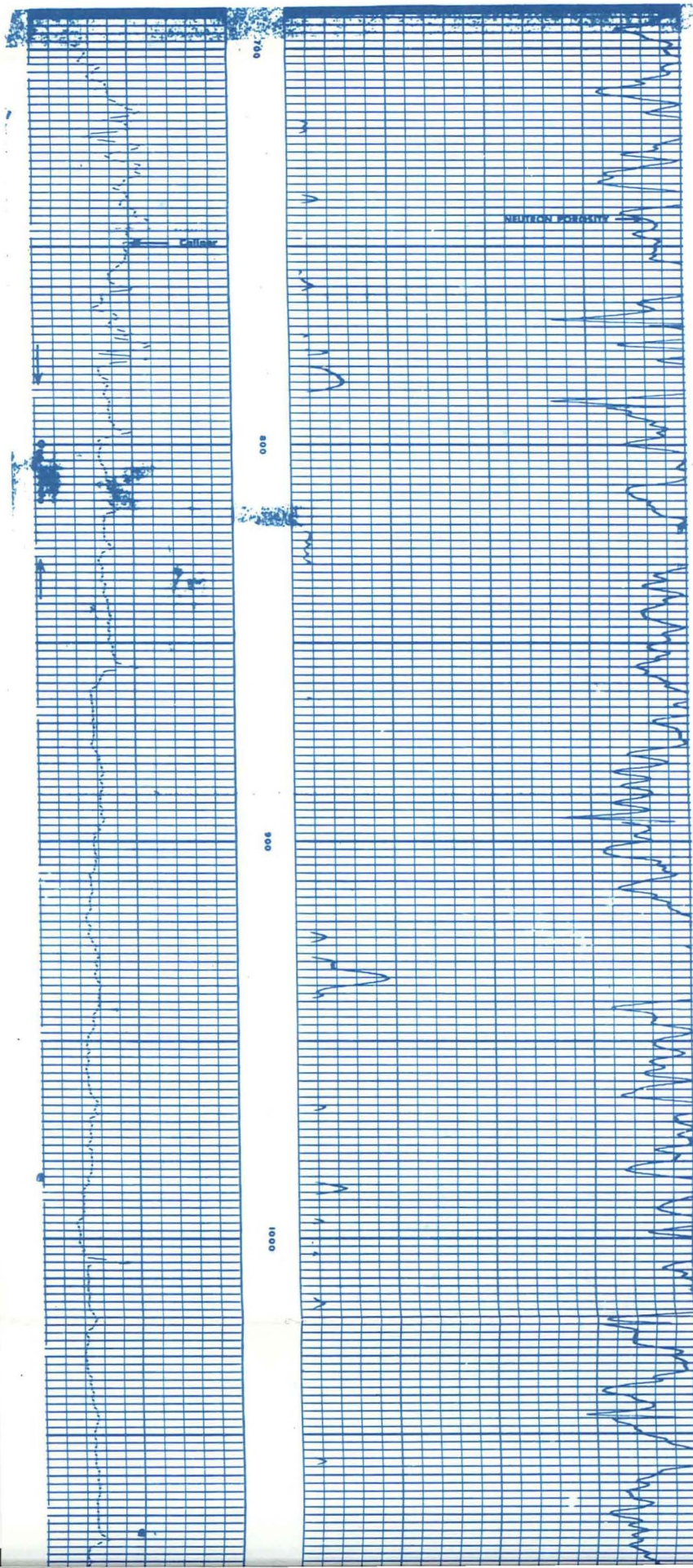
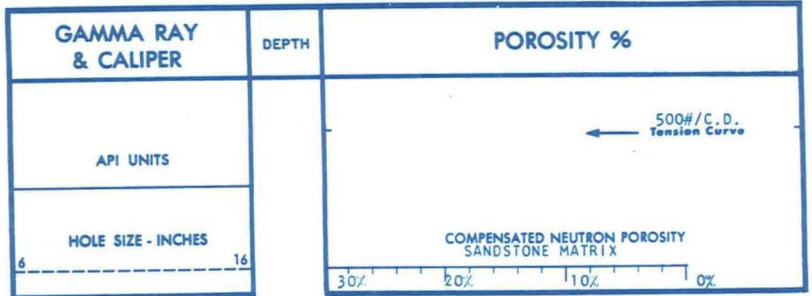
GOR GR _____

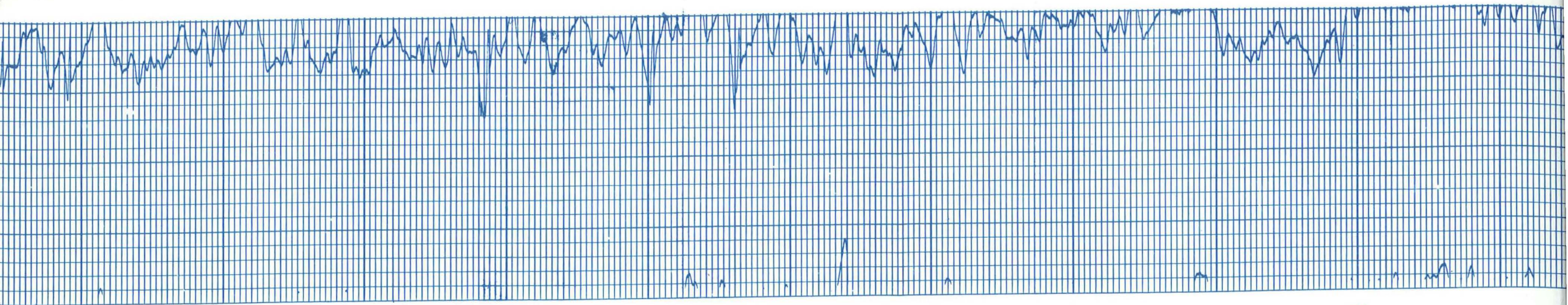
TP CP _____

REMARKS: _____

Remarks:		Equipment Used							
Series No.	2413	Run No.	ONE						
S.O.	39323	Tool No.	29364						
Elec. No.	29364	Panel No.	23832						
Gamma Ray		Equipment Data							
Run No.	ONE	Run No.	ONE						
Tool Model No.	C-NEUT.	Log Type	C-NEUT.						
Diam.	2413	Tool Model No.	2413						
Detect. Model No.	29364	Serial No.	29364						
Type	4"	Diam.	4"						
Length		Detect. Model SS							
Dist. to N. Source		Detect. Model LS							
Computer Data		Source Model No.							
		Serial No.	S17S20						
		Type	30431						
			AM/BE						
Logging Data									
General		Compensated Neutron		Gamma Ray					
Run No.	Depths	Speed	T.C.	Sens.	Porosity	T.C.	Sens.	Zero	API G.R.
ONE	From To	FT./Min.	SS LS	SS LS	Zero Units/Div	Sec.	Settings	Div. L or R	Units/Div.
	8342 698	REC	CCTC CCTC	148 143	7.5 2/CD	0-30			

		S.O. 39323	
		Tool No. 29364	
		Elec. No. 29364	
		Panel No. 23832	
Gamma Ray		Equipment Data	
Run No.		Run No.	ONE
Tool Model No.		Log Type	C-NEUT.
Diam.		Tool Model No.	2413
Detect. Model No.		Serial No.	29364
Type		Diam.	4"
Length		Detect. Model SS	
Dist. to N. Source		Detect. Model LS	
Computer Data		Source Model No.	S17520
		Serial No.	30431
		Type	AM/BE
Logging Data			
General		Compensated Neutron	
Run No.		T.C.	
From	To	Sens.	
ONE	8342	SS LS	148 143
	698	Zero	7.5
		Units/Div	2/CD
		Scale	0-30
		Gamma Ray	
		T.C. Sec.	
		Sens. Settings	
		Zero Div. L or R	
		API G.R. Units/Div.	





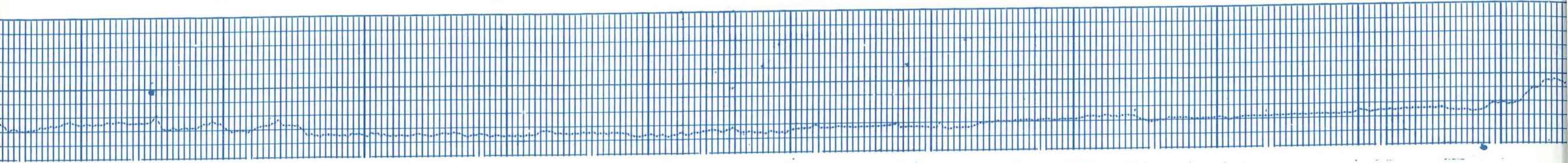
1100

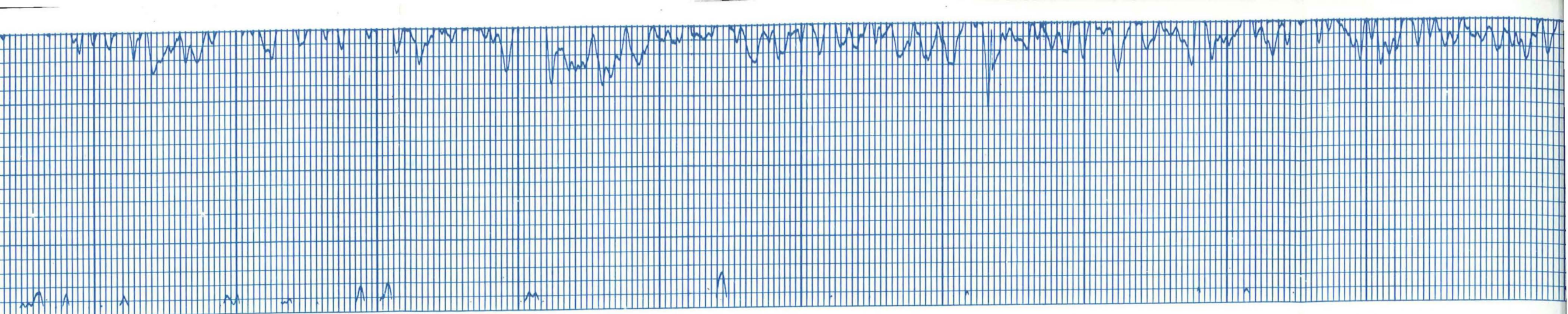
1200

1300

1400

1500





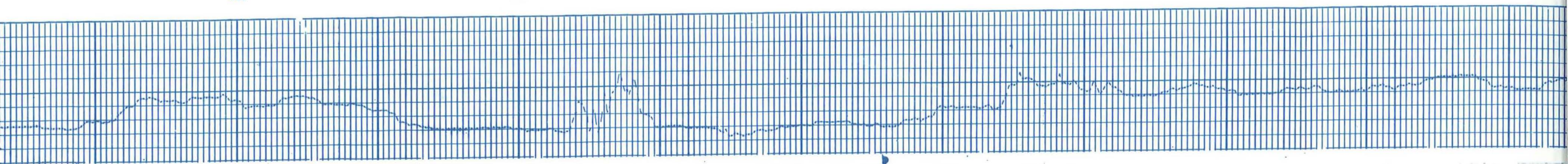
1600

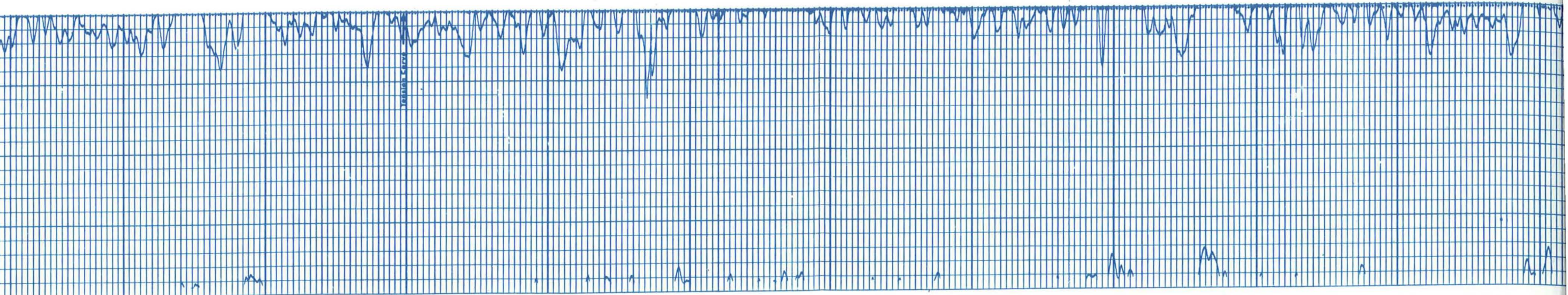
1700

1800

1900

2000





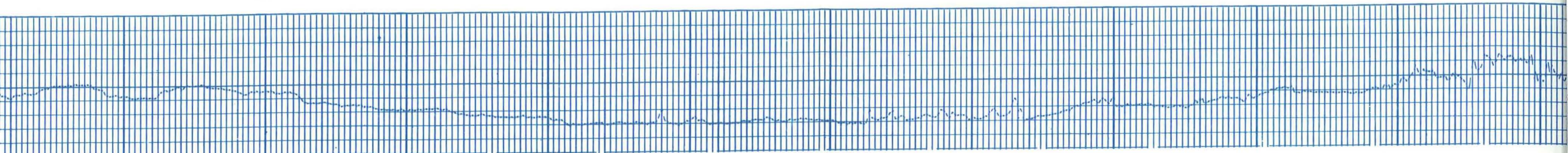
2100

2200

2300

2400

2500





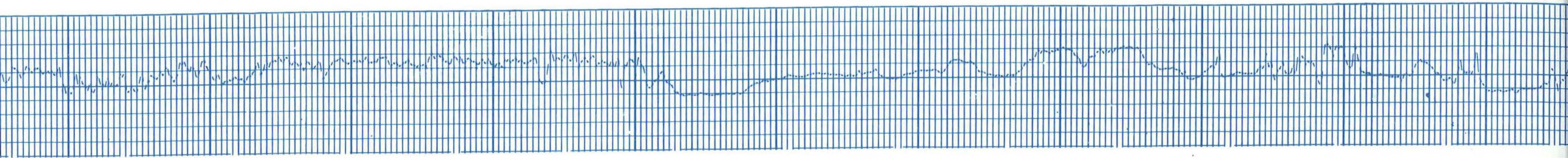
2600

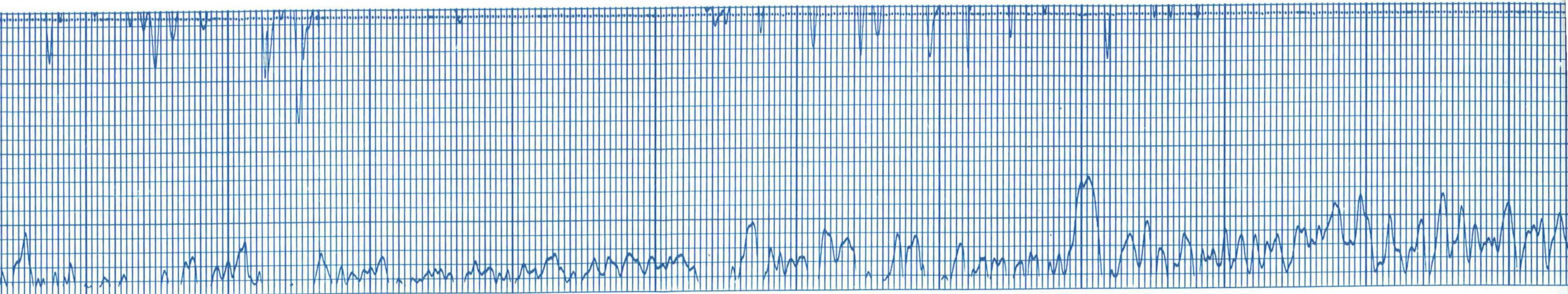
2700

2800

2900

3000





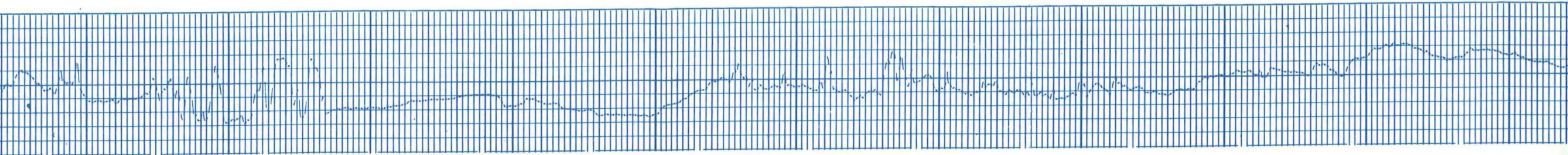
3100

3200

3300

3400

3500





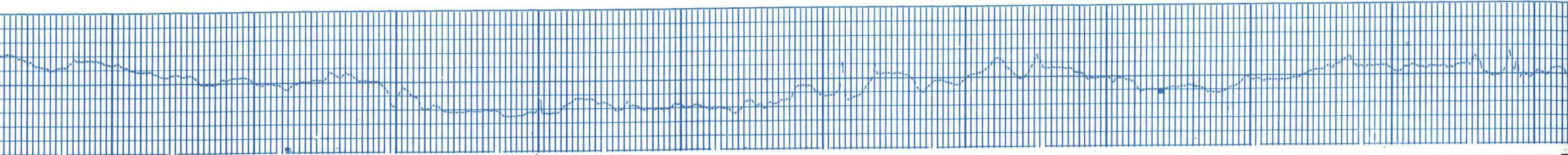
3600

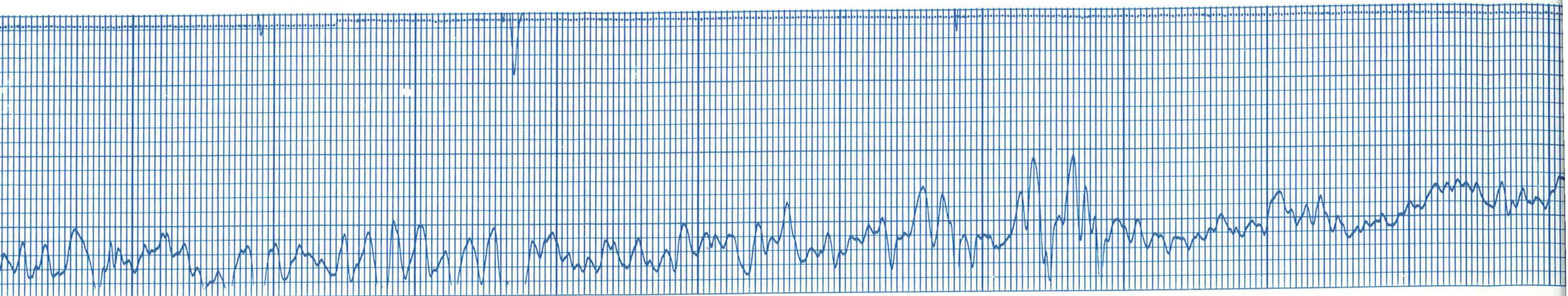
3700

3800

3900

4000





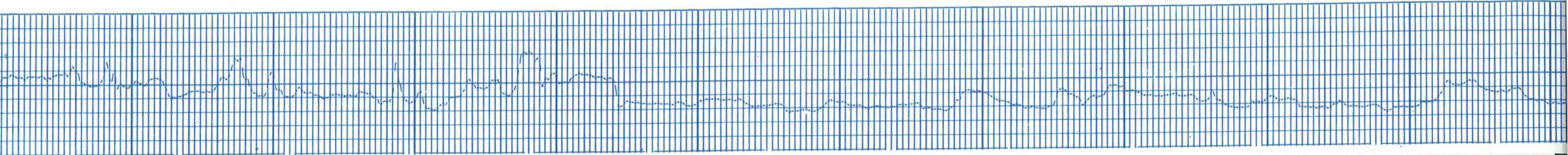
4100

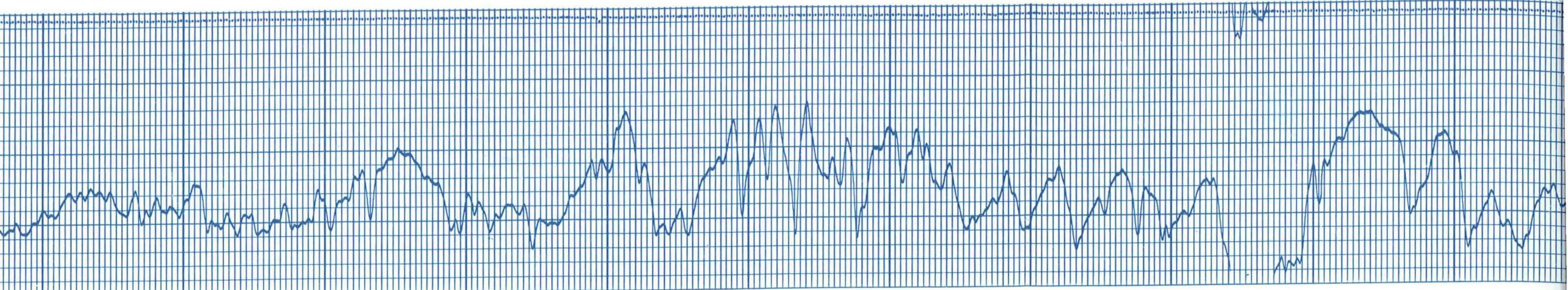
4200

4300

4400

4500





4500

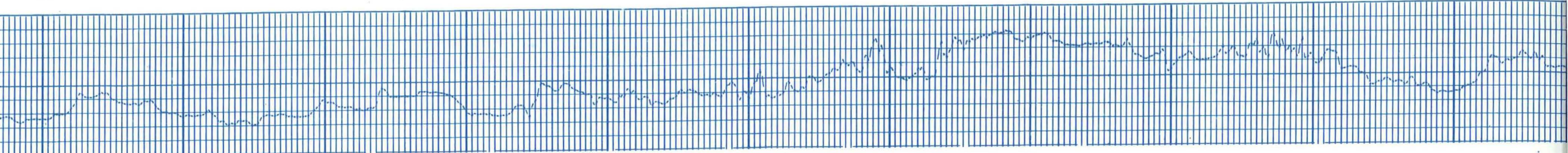
4600

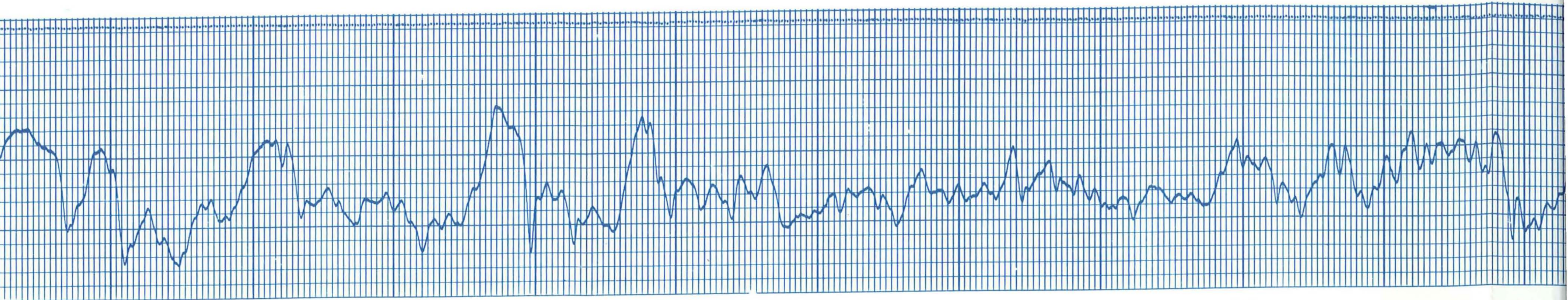
4700

4800

4900

5000





5000

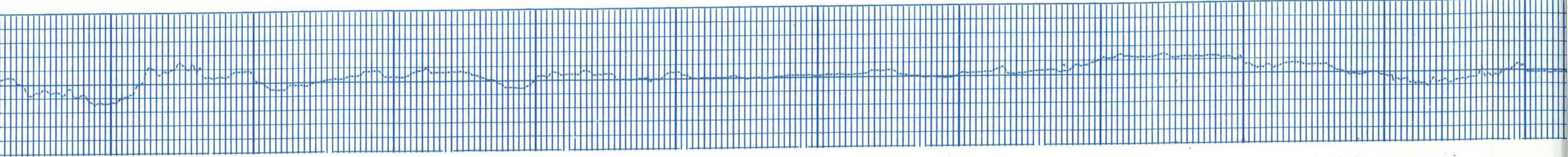
5100

5200

5300

5400

5500





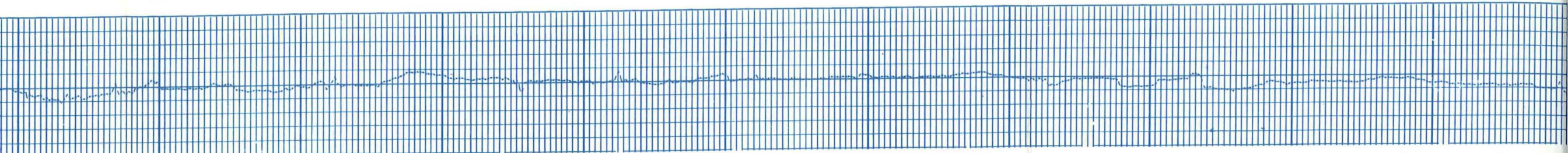
5500

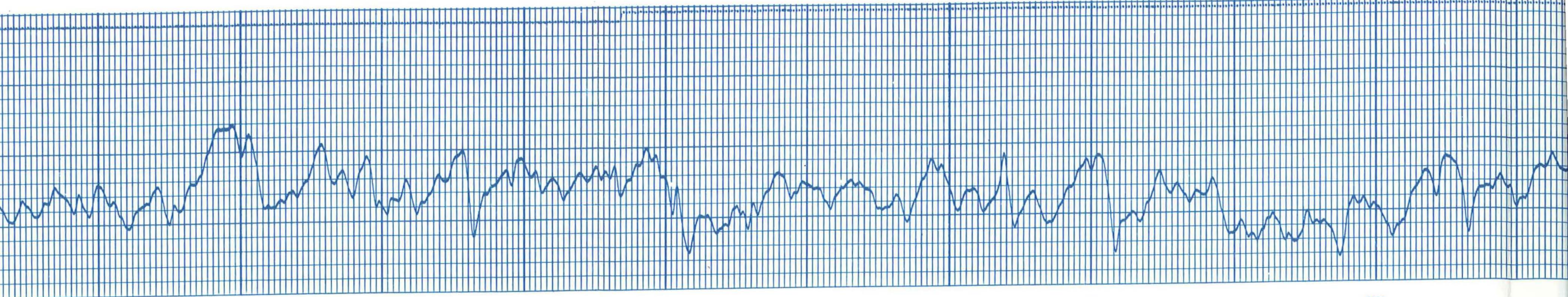
5600

5700

5800

5900





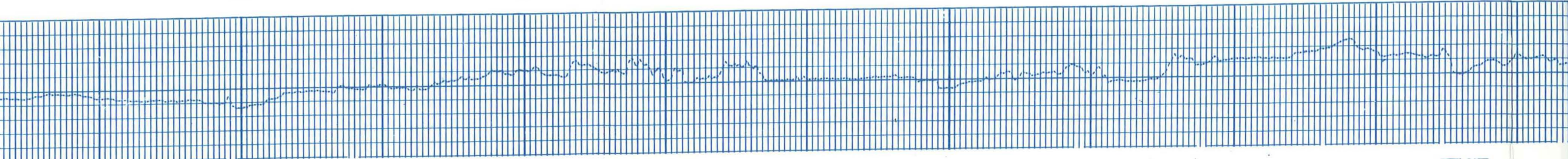
6000

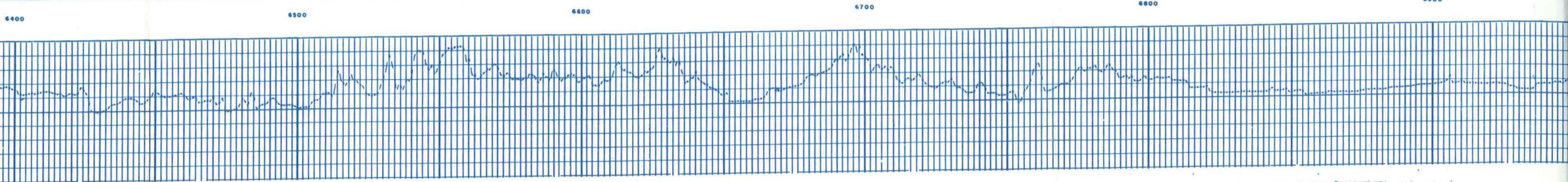
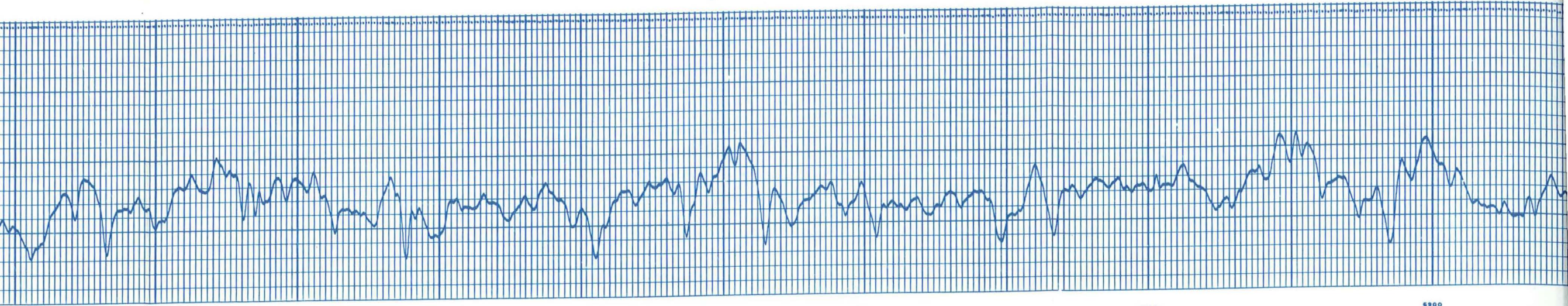
6100

6200

6300

6400





6400

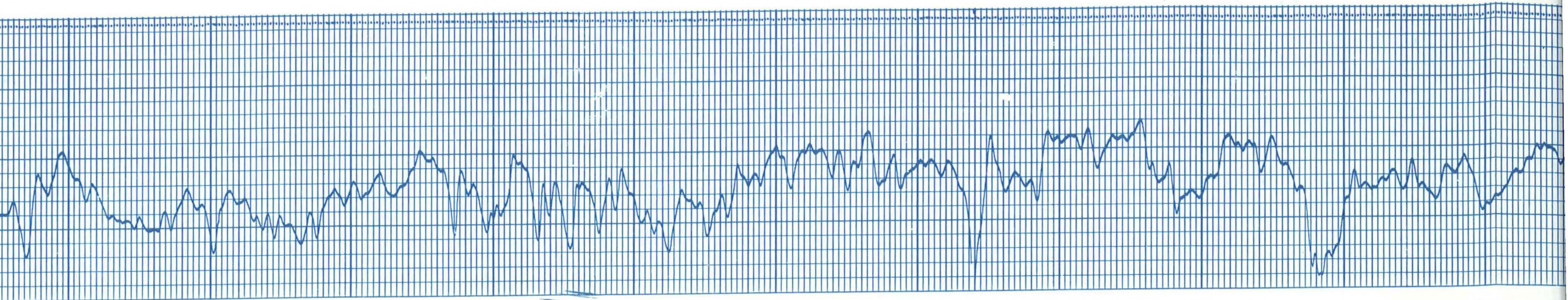
6500

6600

6700

6800

6900



6900

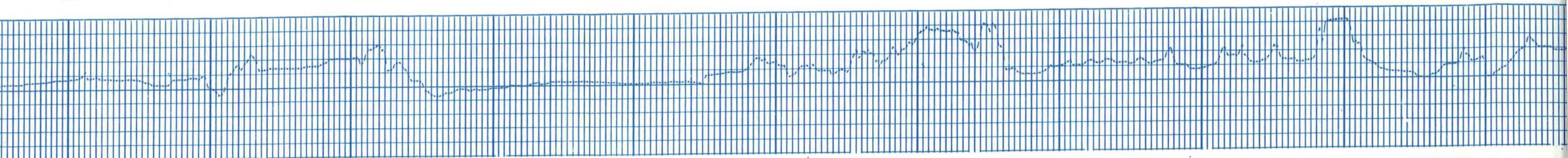
7000

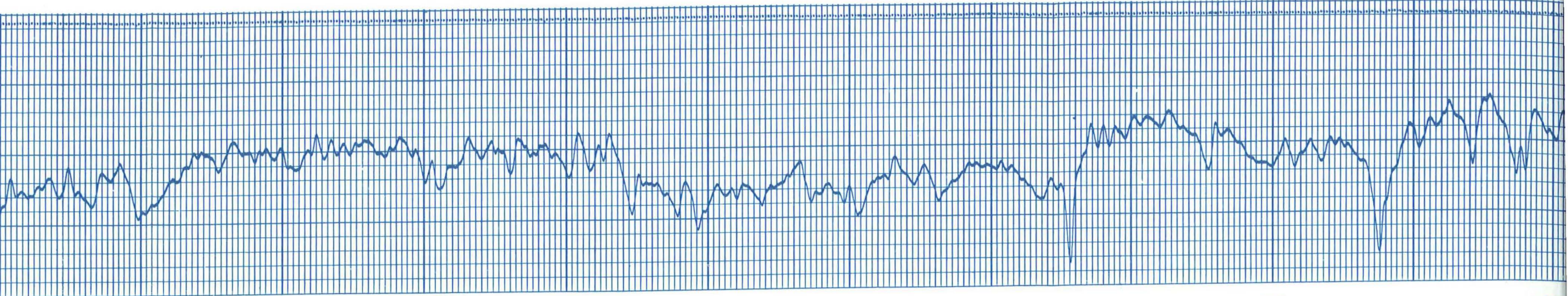
7100

7200

7300

7400





7400

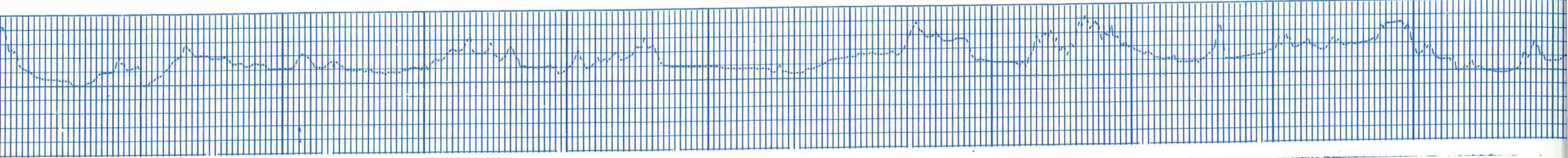
7500

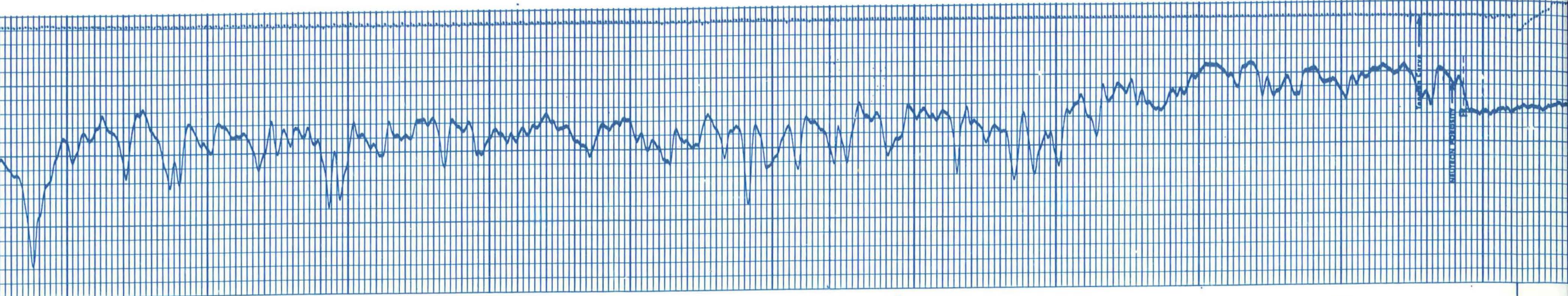
7600

7700

7800

7900





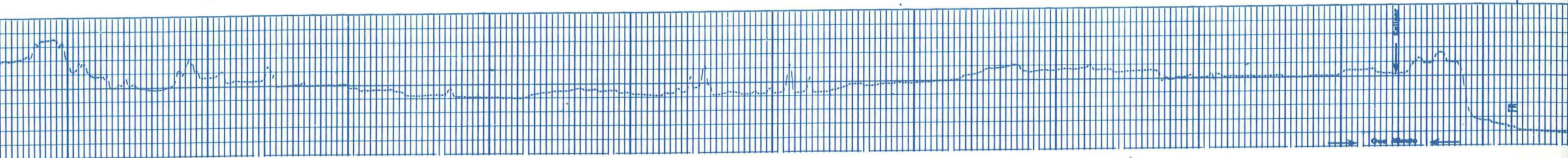
7500

8000

8100

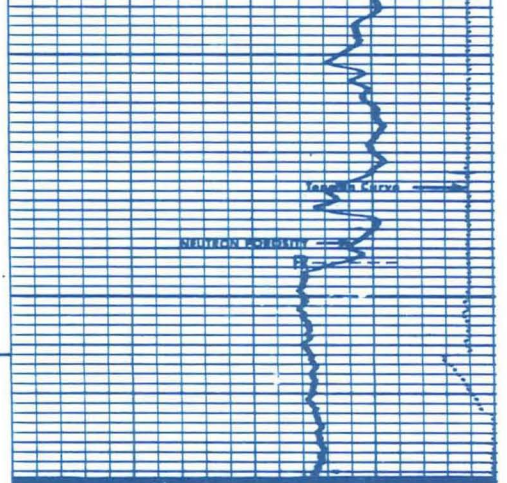
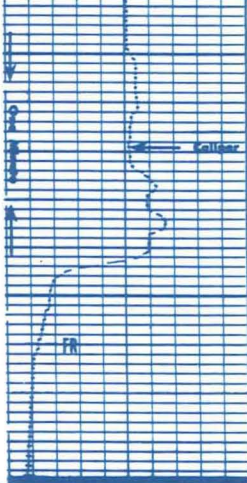
8200

8300

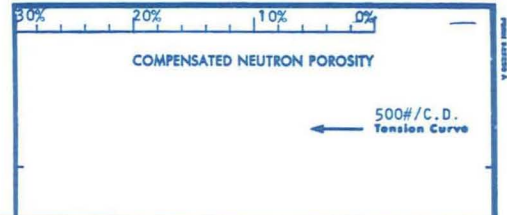


1 mV

PR



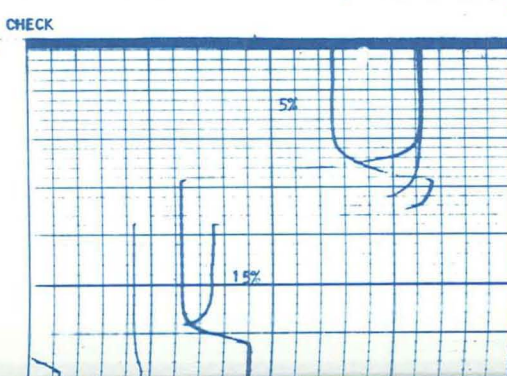
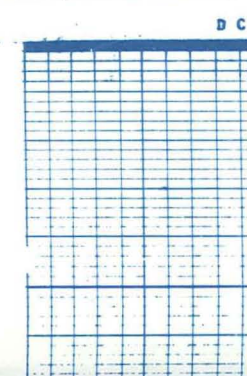
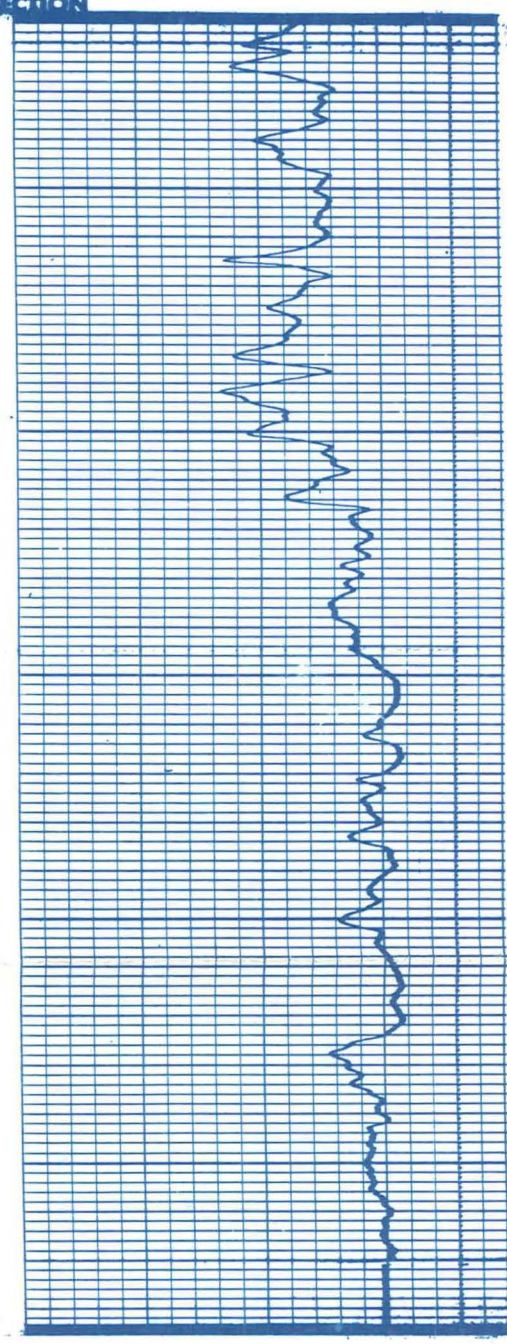
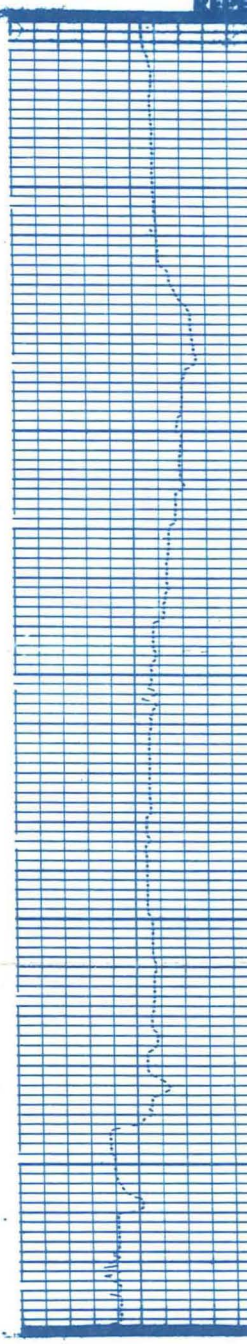
6	16
HOLE SIZE - INCHES	
API UNITS	

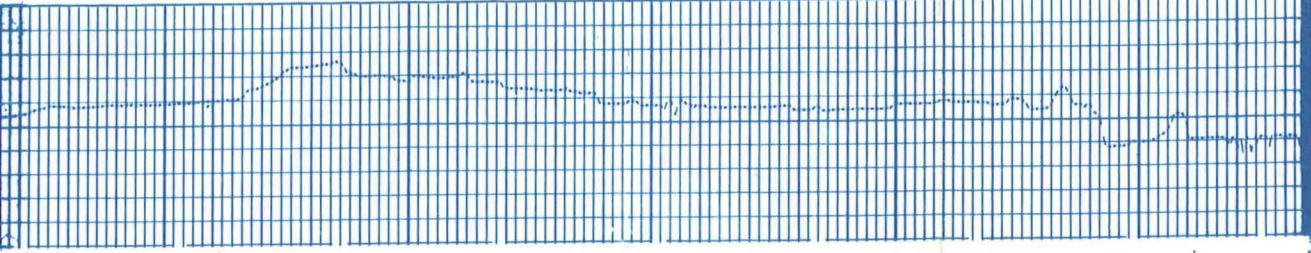


GAMMA RAY & CALIPER

DEPTH POROSITY %

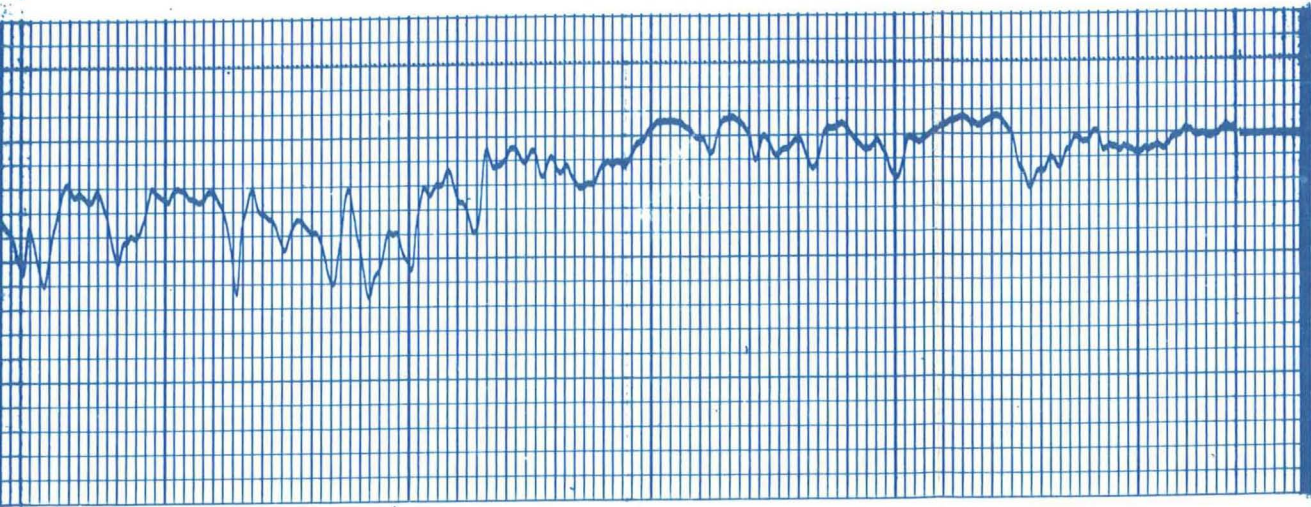
Company	B. F. E. C. - E. R. D. A.	Drillers T.D.	8472
Well	CARSON SINK #1	Log F.R.	8360
Field	WILDCAT	Log T.D.	8362
County	CHURCHILL	Elevations:	
State	NEVADA	K.B. 4082	D.F. 4080 G.L. 4057





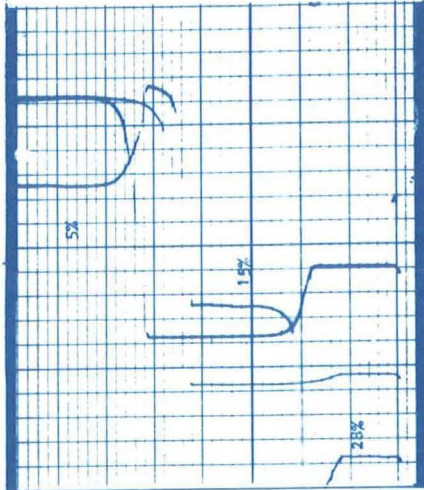
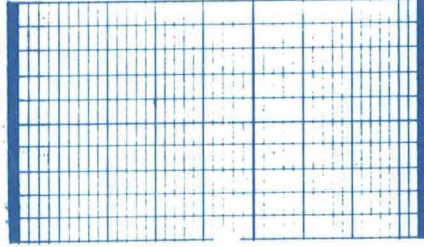
8200

8300

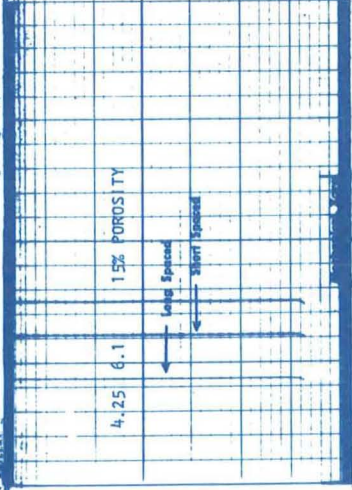
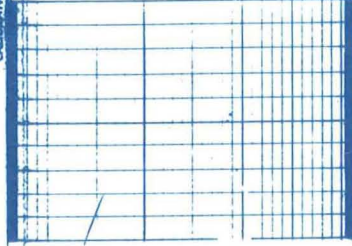


D C LEVEL CHECK

DC



CALIBRATION—AFTER SURVEY



CALIBRATION—BEFORE SURVEY

