



COMPENSATED

Densilog

G102870-2 of 4

FILE NO. R-406	COMPANY B.F.E.C.-E.R.D.A.
	WELL CARSON SINK #1
	FIELD WILDCAT
	COUNTY CHURCHILL STATE NEVADA
LOCATION: CENTER OF SEC. 4 OF SEC. 4	
SEC 16 TWP 19N RGE 27E	Other Services BHC/AL/CN SPECTRALOG DIFL/TEMP PROX-MIN
Permanent Datum GROUND LEVEL Elev. 4057	Elevations KB 4082
Log Measured from R.K.E., 25 Ft. Above Permanent Datum	DF 4080
Drilling Measured from R.K.E.	GL 4057
Date 3/3/77	
Run No ONE	
Depth-Driller 8482	
Depth-Logger 8512	
Bottom Logged Interval 8511	
Top Logged Interval 698	
Casing-Driller 9 5/8 699 @ @ @	
Casing-Logger 698	
Bit Size 8 3/4"	
Type Fluid in Hole CHEM GEL	
Density and Viscosity 9.0+ 137	
pH and Fluid Loss 10.0 11.2 cc	cc cc cc
Source of Sample FLOWLINE	
Rm @ Meas. Temp 2.2 @ 63 *F @ *F @ *F @ *F	
Rmf @ Meas. Temp 1.8 @ 60 *F @ *F @ *F @ *F	
Rmc @ Meas. Temp 2.3 @ 61 *F @ *F @ *F @ *F	
Source of Rmf and Rmc M M	
Rm @ BHT .51 @ 246 *F @ *F @ *F @ *F	
Time Since Circ. 17 HOURS	
Max. Rec. Temp. Deg. F 246 *F *F *F *F	
Equip. No. and Location 6089 RSVLT	
Recorded By MCCALL	
Witnessed By MR. HORTON & MR. CALLIHAN	

Reproduced By  
*Electrical Log Services*  
 MIDLAND, TEXAS 79701

REFERENCE K 9399J



27 COMPLETION RECORD

SPUD DATE \_\_\_\_\_

COMP DATE \_\_\_\_\_

DST RECORD \_\_\_\_\_

API NO. \_\_\_\_\_

CASING RECORD \_\_\_\_\_

PERFORATING RECORD \_\_\_\_\_

ACID. FRAC SHOT \_\_\_\_\_

IP \_\_\_\_\_

GOR GR \_\_\_\_\_

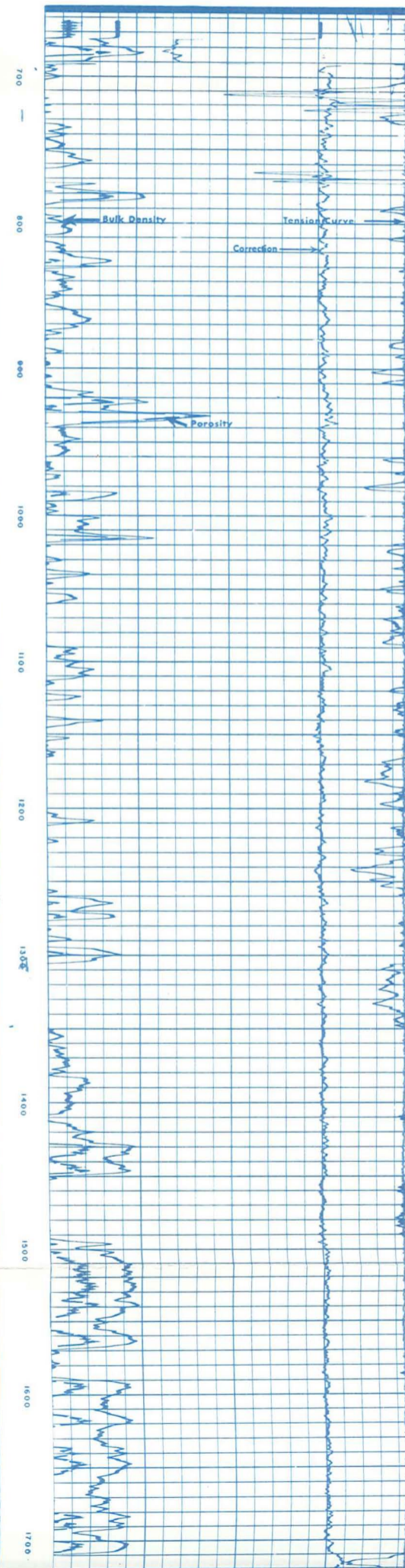
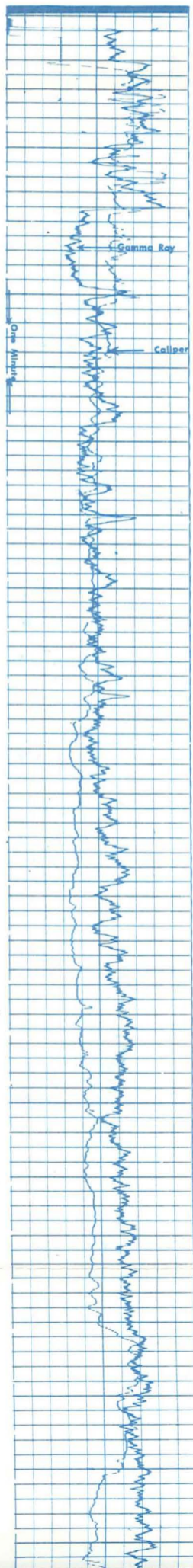
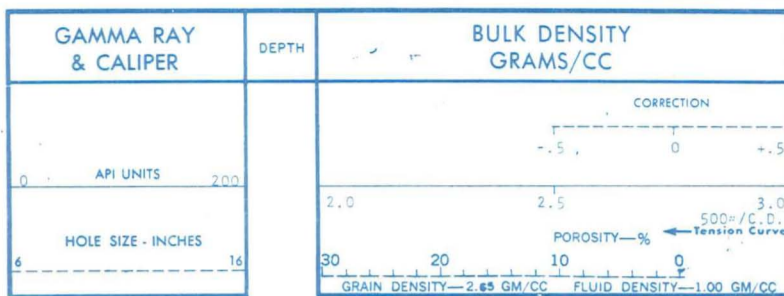
TP CP \_\_\_\_\_

REMARKS: \_\_\_\_\_

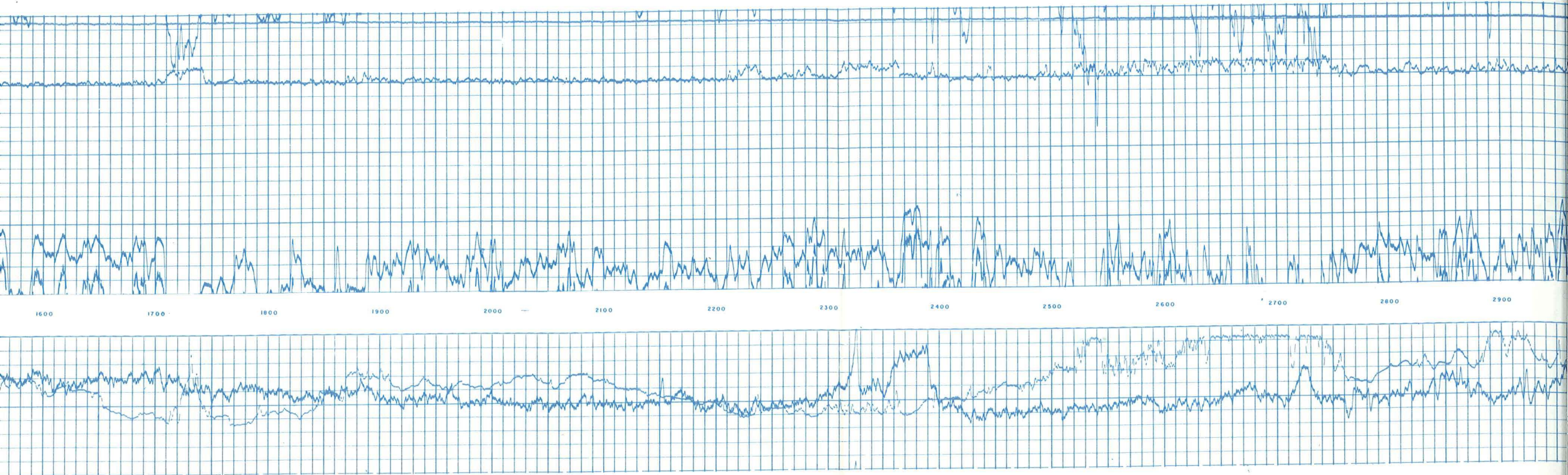
REPRODUCTION FOR RESALE PROHIBITED

Remarks:		Equipment Used	
Series No	ONE	Run No	ONE
S.O.	39323	Tool Model No	2208
Tool No	29226	Serial No.	20226
Elec. No.	29226	Diam.	3"
Panel No	24313	Computer Model No.	2254
		Serial No.	26313
		Source Model No.	S3E20
		Serial No.	C-116
General		Computer Data	
Host/Truck No			
Auxiliary			
Equipment			
Logging Data			
General		Densilog	
Run No	ONE	Run No	ONE
Depths	8413 698	Tool Model No	2208
Speed	PEC	Serial No.	20226
T.C. Sec	CCTC	Diam.	3"
Density Scale	2.0-3.0	Computer Model No.	2254
Correction Scale	-0.5 +.5	Serial No.	26313
Porosity Scale Data	277C.D.	Source Model No.	S3E20
T.C. Sec	370	Serial No.	C-116
Sens Settings	ZERO		
Zero Div L or R	ZERO		
API GR	20		

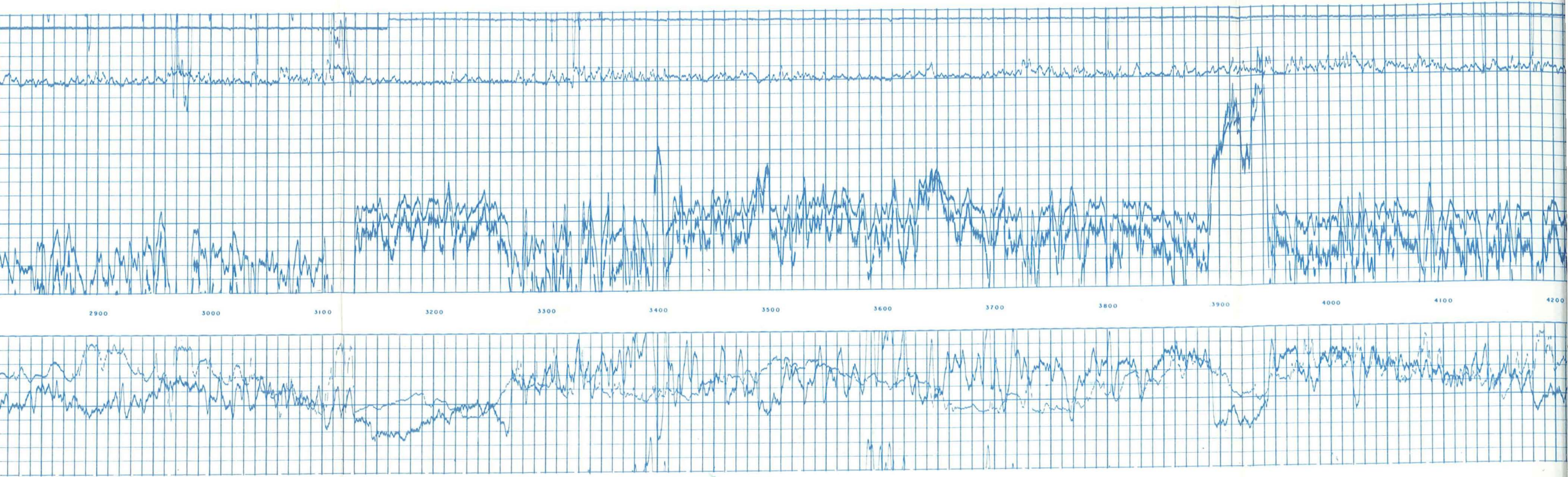
Diam	D6G-	Diam	2
Detect Model No	SCINT	Computer Model No	2254
Type	6"	Serial No	26313
Length	1-1	Source Model No	S3F20
Dist to Source		Serial No	C-116
Host Truck No		Computer Data	
Auxiliary Equipment			
Logging Data			
Run No	General Depths	Densilog	Gamma Ray
ONE	From To	Speed Ft/Min	T.C. Sec
	8413 600	FFC	370
		T.C. Sec	Sens Settings
		CCTC	ZERO
		Density Scale	API GR Units Div
		2.0-3.0	20
		Correction Scale	
		-0.5 +0.5	
		Porosity Scale Data	
		2%/C.C.	



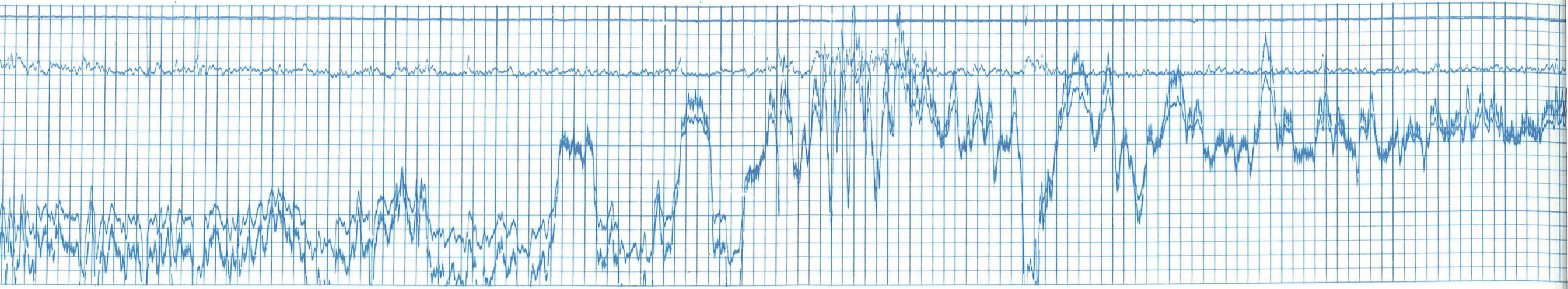




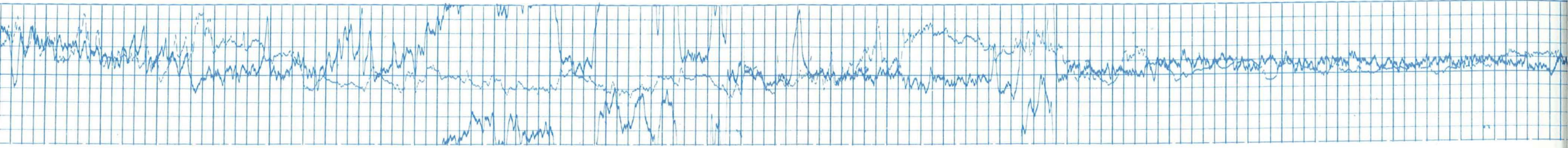




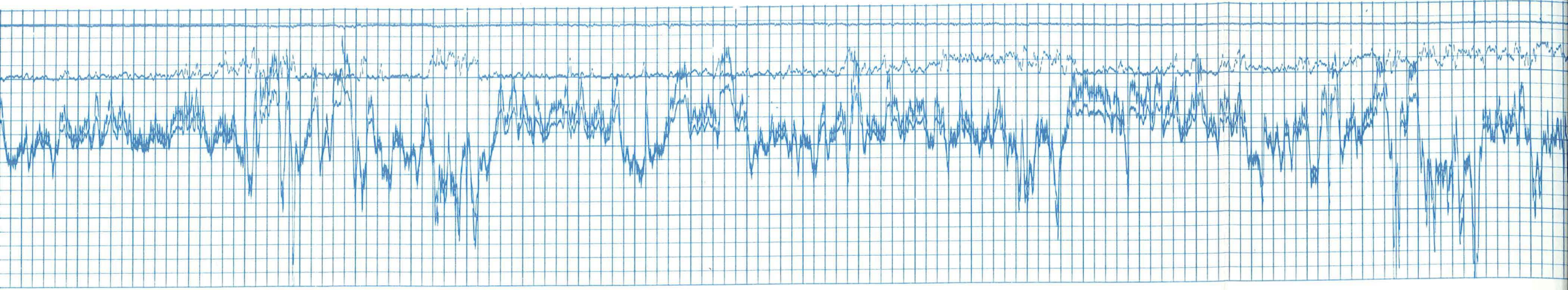




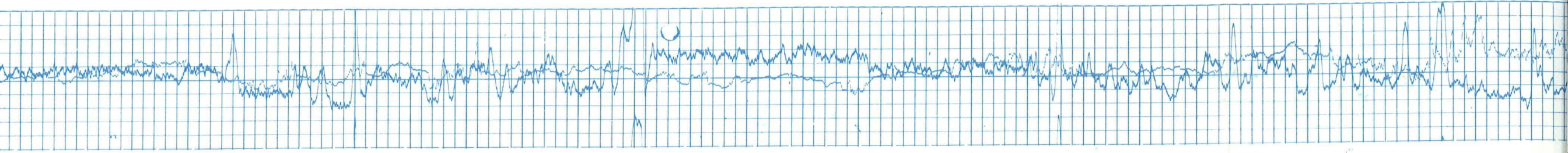
4100 4200 4300 4400 4500 4600 4700 4800 4900 5000 5100 5200 5300 5400



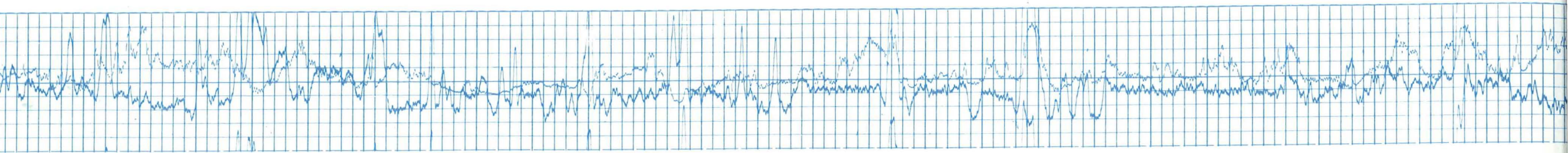
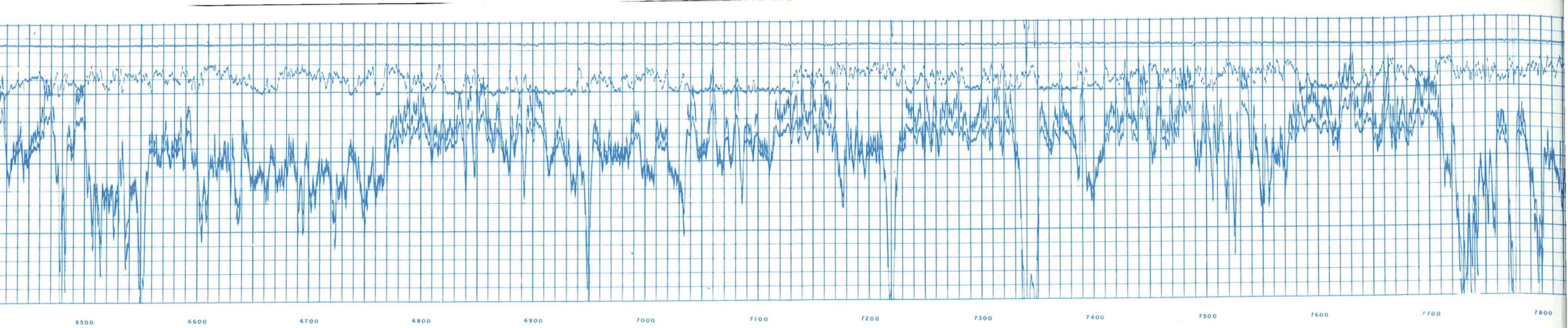




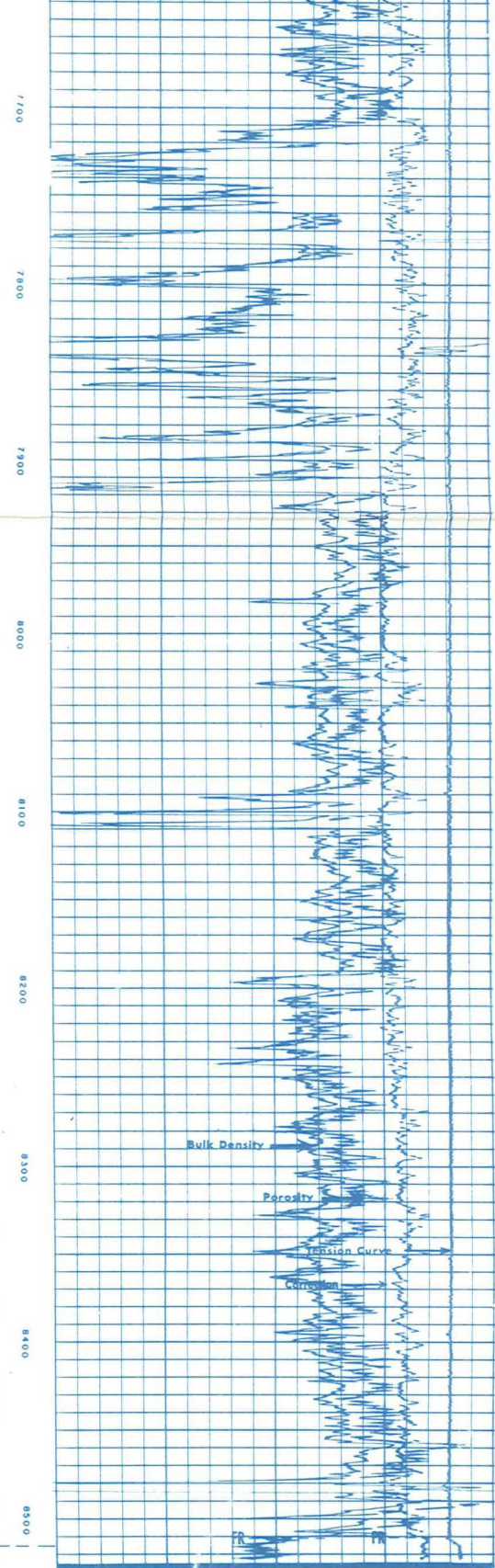
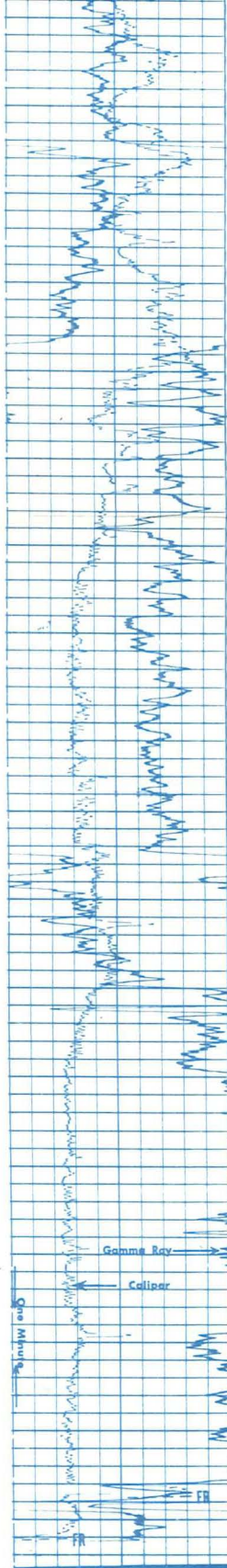
5300                      5400                      5500                      5600                      5700                      5800                      5900                      6000                      6100                      6200 ✓                      6300                      6400                      6500                      6600











6	16
HOLE SIZE - INCHES	
0	200
API UNITS	

30	20	10	0
GRAIN DENSITY—2.65 GM/CC		FLUID DENSITY—1.00 GM/CC	
500#/C.D. Tension Curve			
2.0	2.5	3.0	
CORRECTION		+ .5	

GAMMA RAY & CALIPER

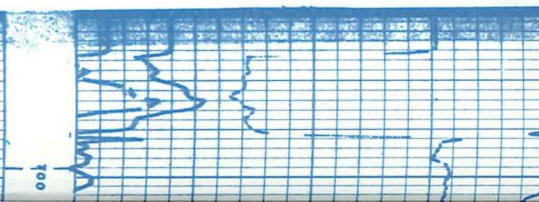
DEPTH

BULK DENSITY GRAMS/CC

Company	B.F.E.C.-E.R.D.A.	Drillers T.D.	8482
Well	CARSON SINK #3	Log F.R.	8411
Field	WILDCAT	Log T.D.	8513
County	CHURCHILL	Elevations:	
State	NEVADA	K.B.	4082
		D.F.	4080
		G.L.	4057

0	200
API UNITS	
6	16
HOLE SIZE - INCHES	

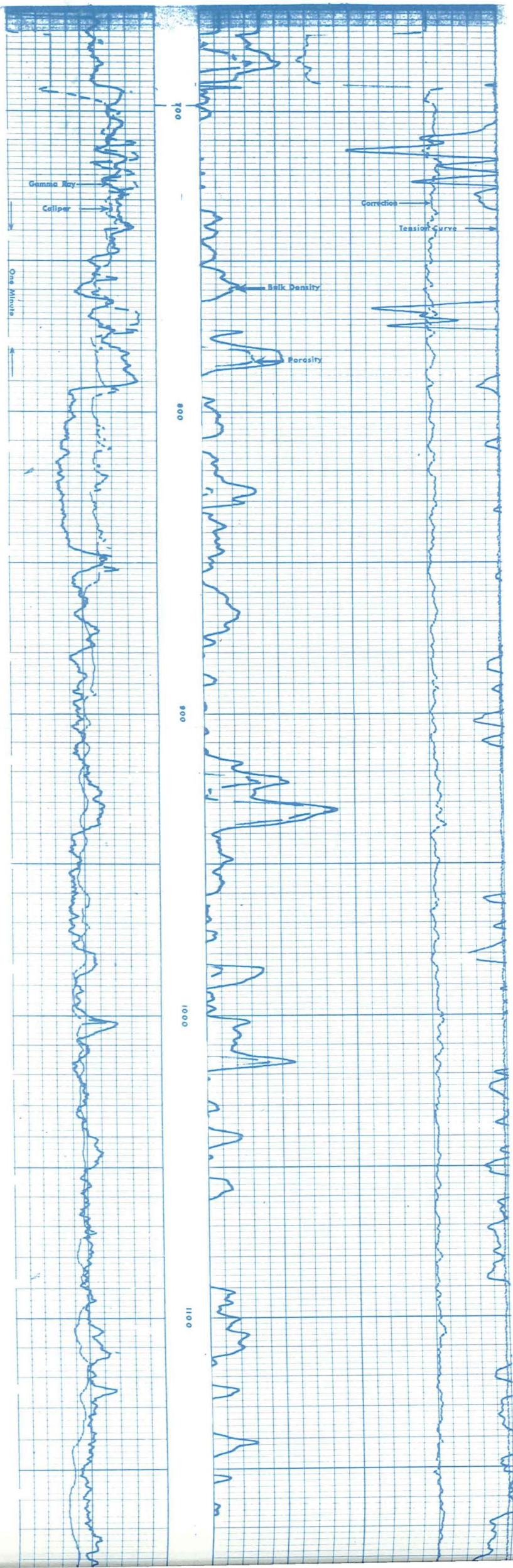
CORRECTION			
- .5 0 + .5			
2.0	2.5	3.0	
500#/C.D. Tension Curve			
POROSITY—%		←	
30	20	10	0
GRAIN DENSITY—2.65 GM/CC		FLUID DENSITY—1.00 GM/CC	



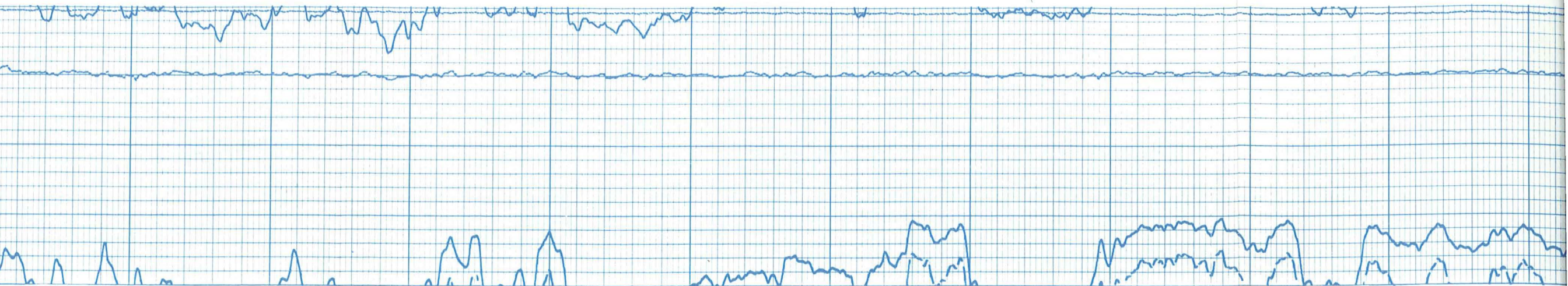


0 API UNITS 200  
 HOLE SIZE - INCHES  
 6 16

2.0 2.5 3.0  
 -1.5 0 +1.5  
 500 #/ft<sup>3</sup>  
 ← Tension Curve  
 POROSITY—%  
 30 20 10 0  
 GRAIN DENSITY—2.65 GM/CC FLUID DENSITY—1.00 GM/CC







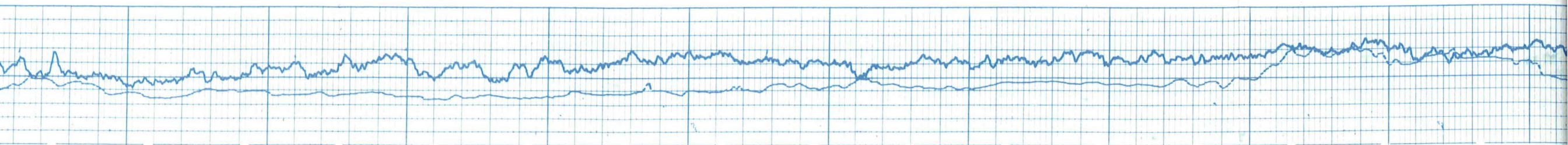
1200

1300

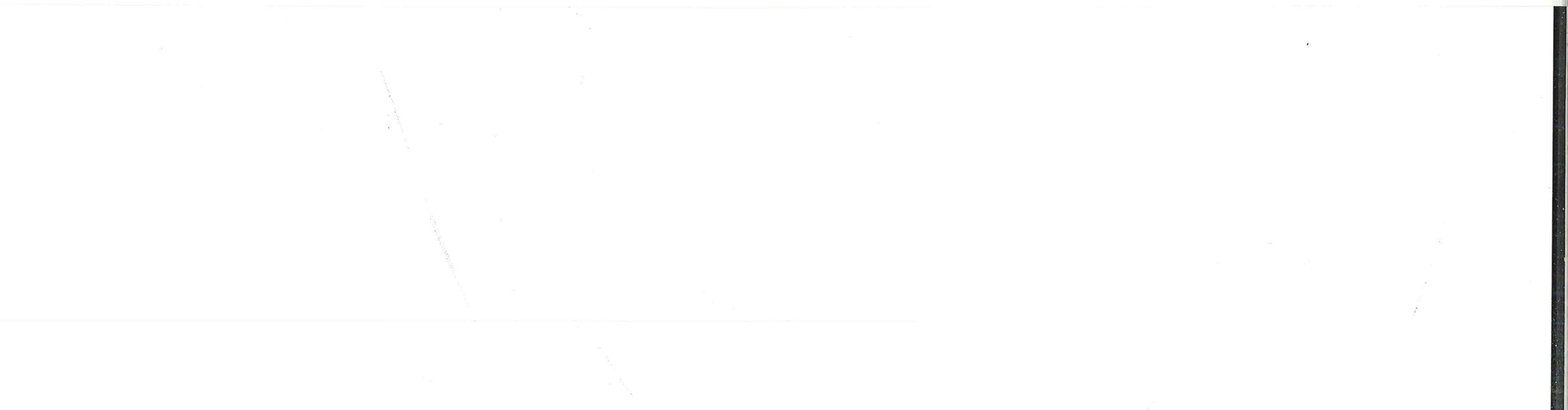
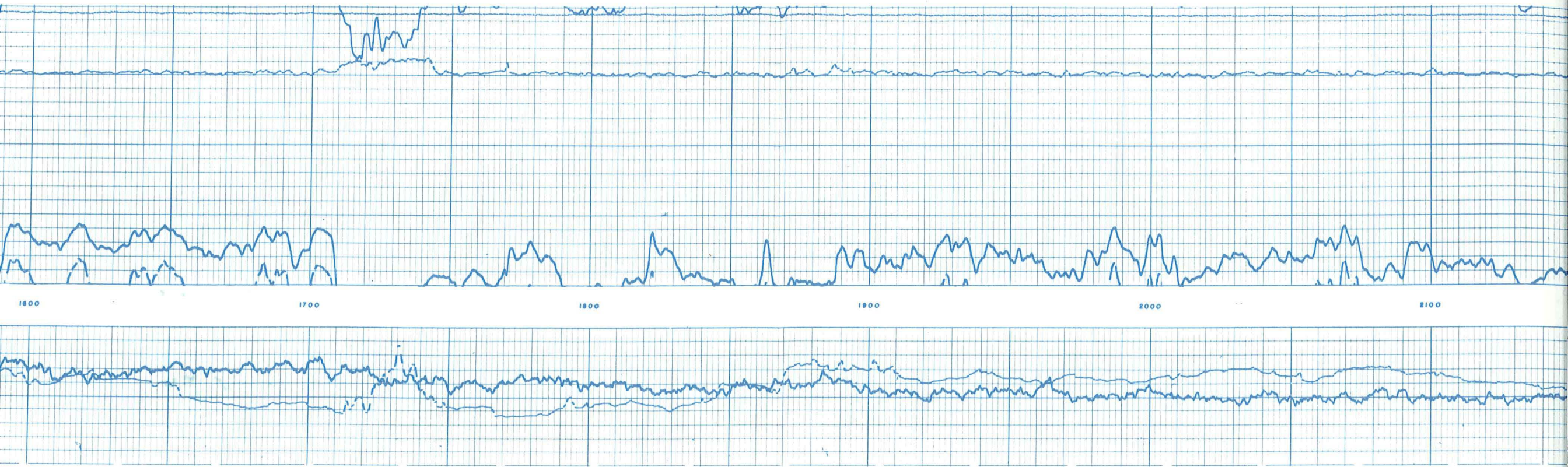
1400

1500

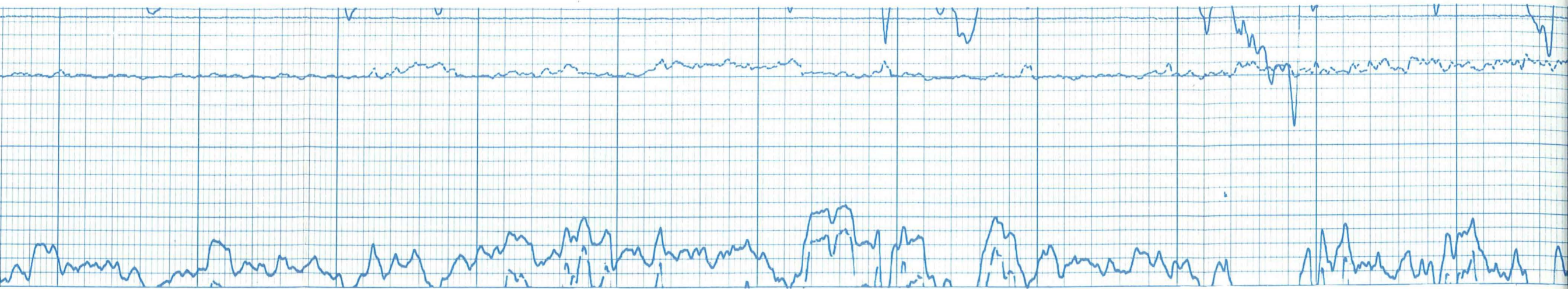
1600











2100

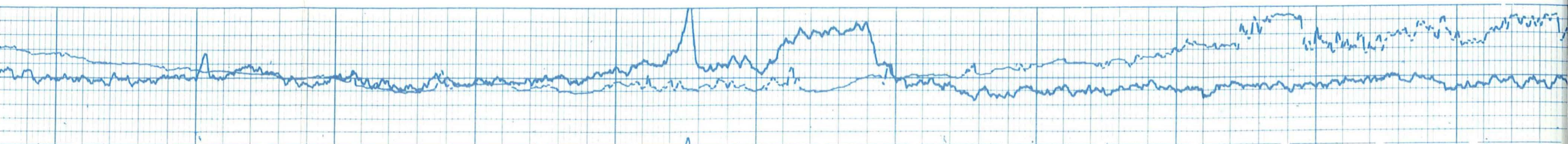
2200

2300

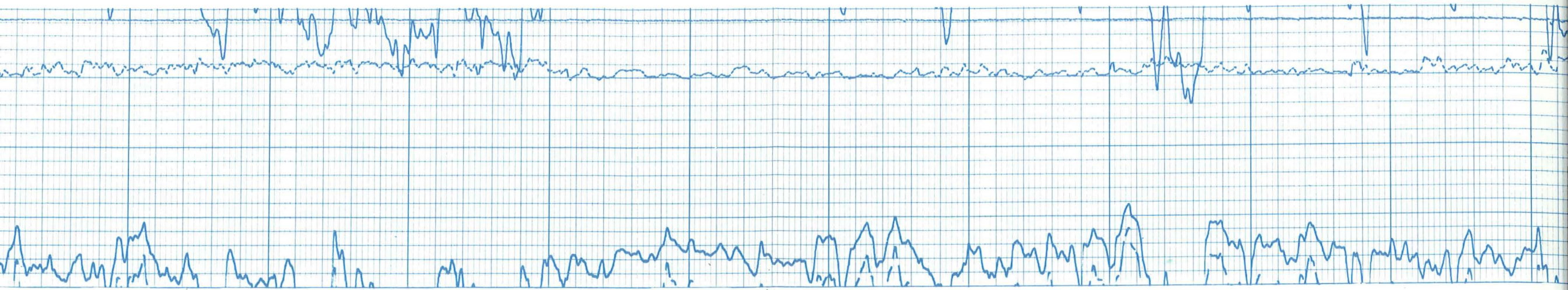
2400

2500

2600







2600

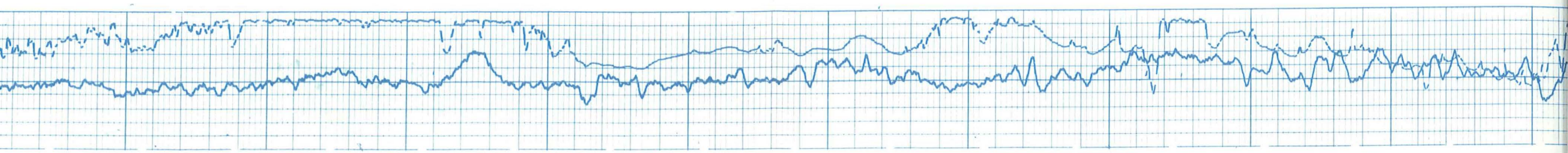
2700

2800

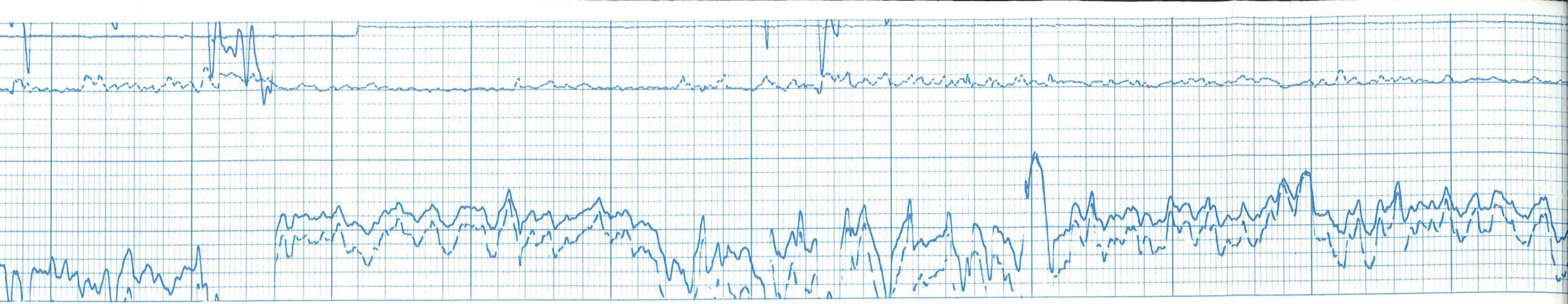
2900

3000

3100







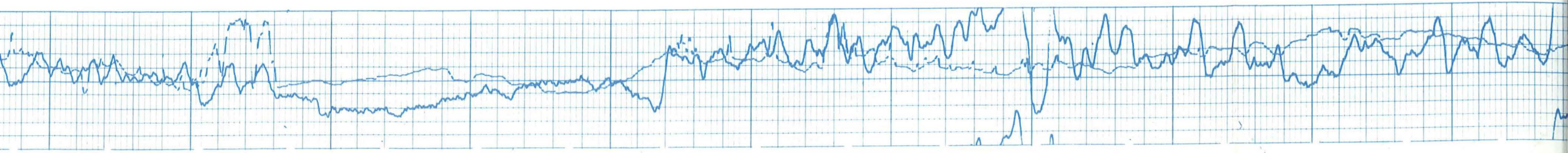
3100

3200

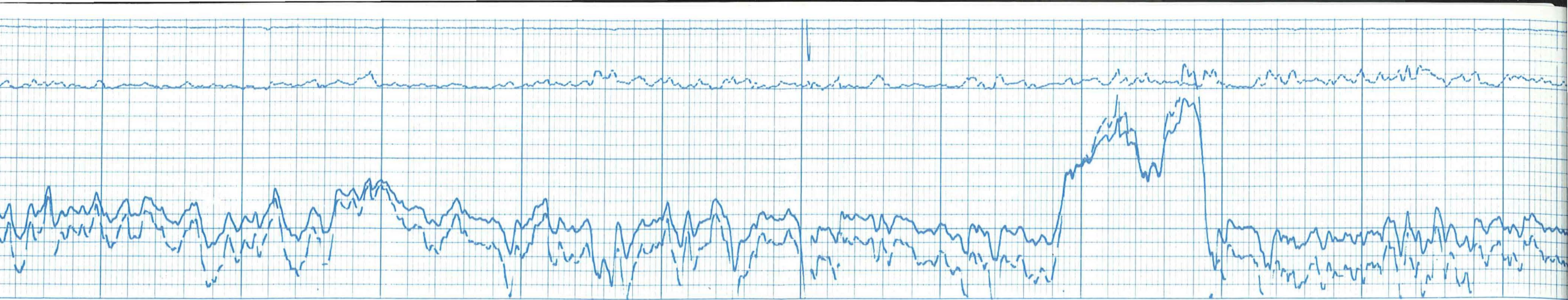
3300

3400

3500







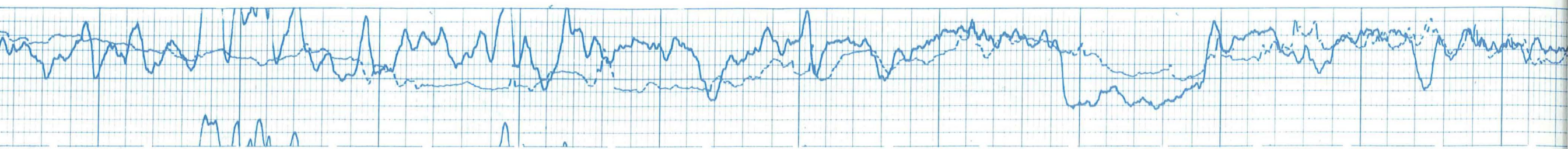
3600

3700

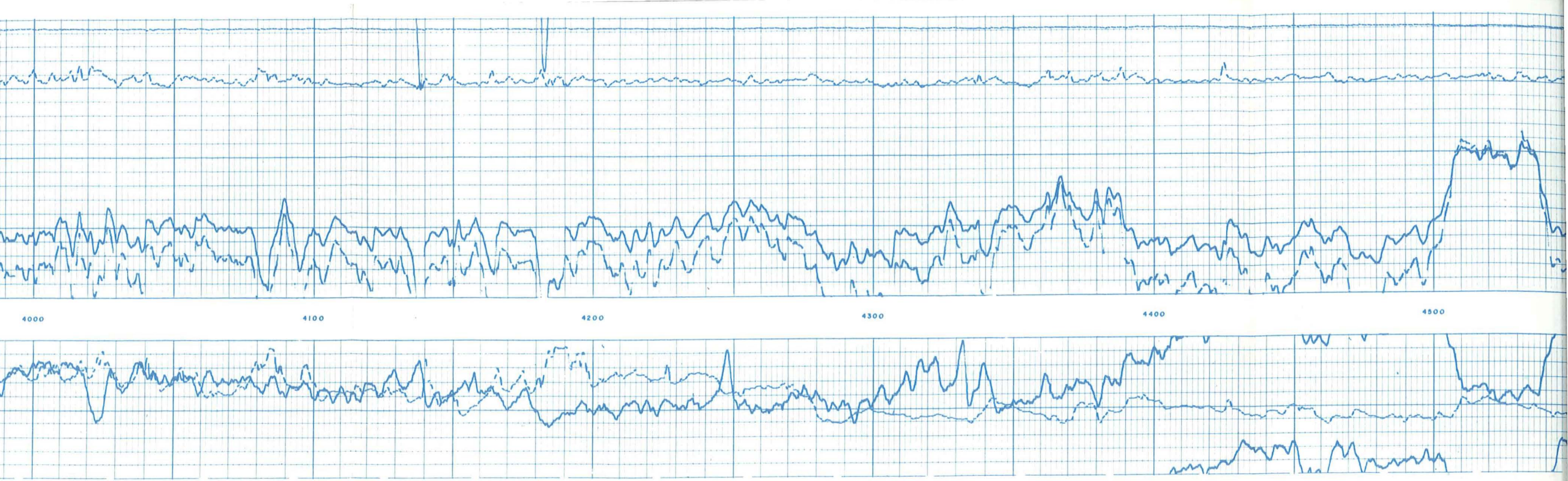
3800

3900

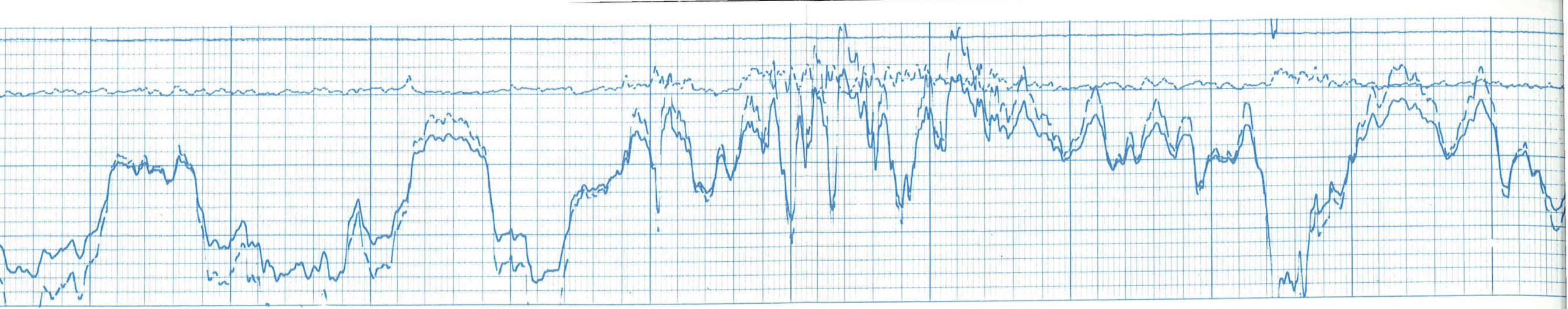
4000











4500

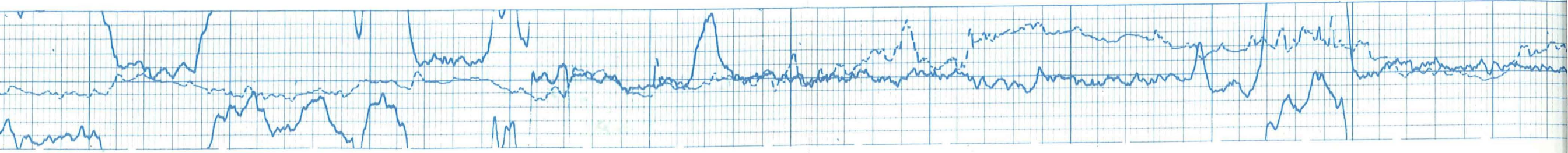
4600

4700

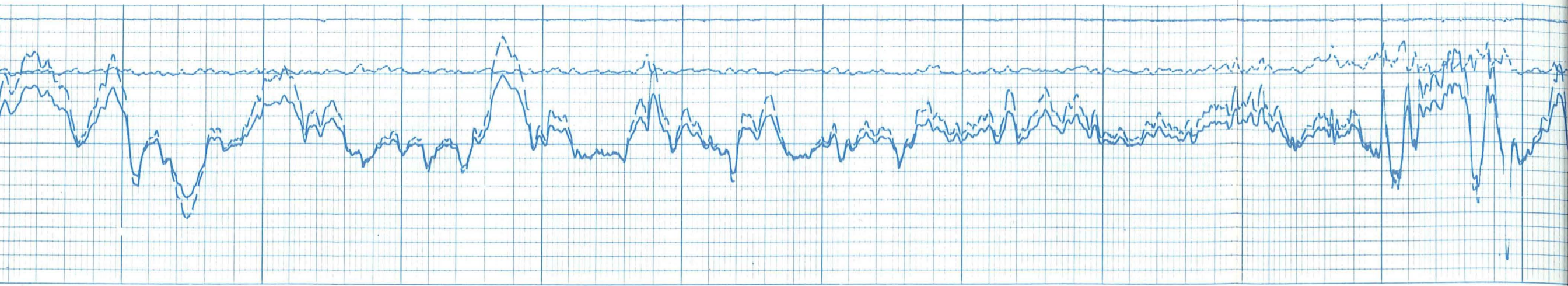
4800

4900

5000







5000

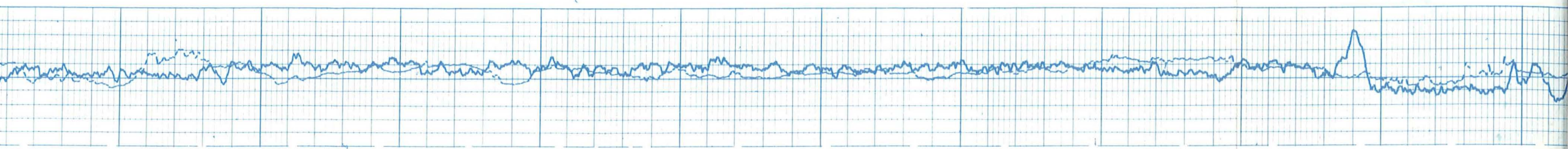
5100

5200

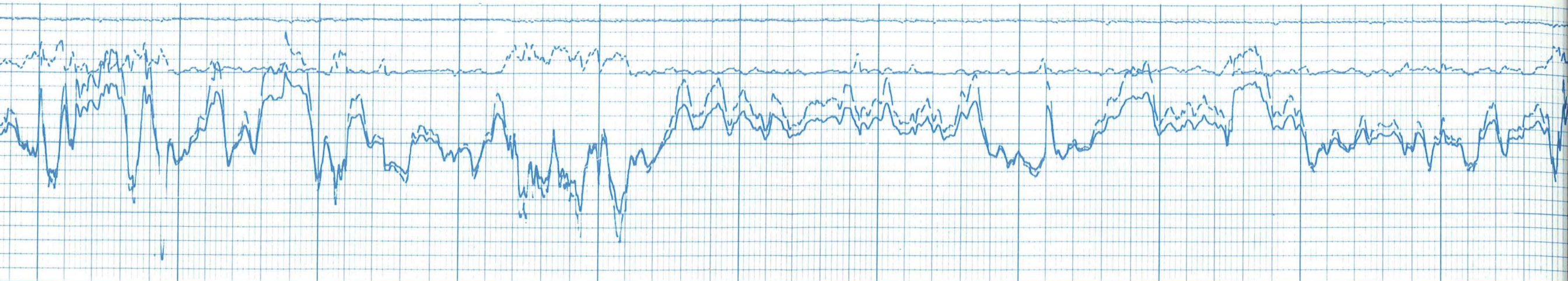
5300

5400

5500







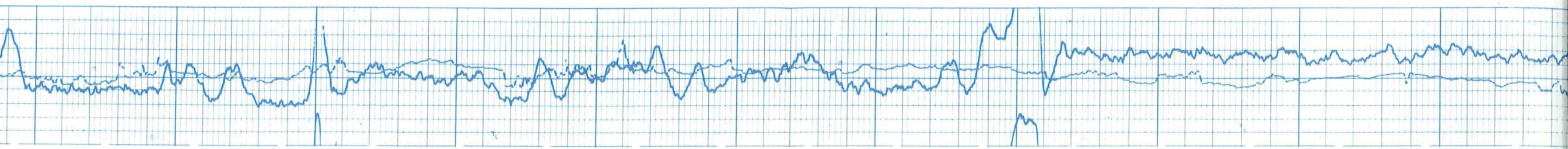
5500

5600

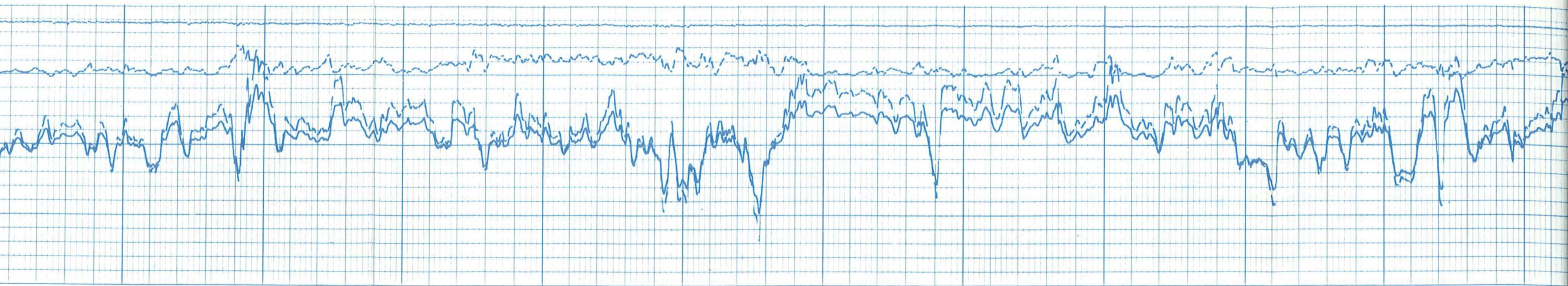
5700

5800

5900







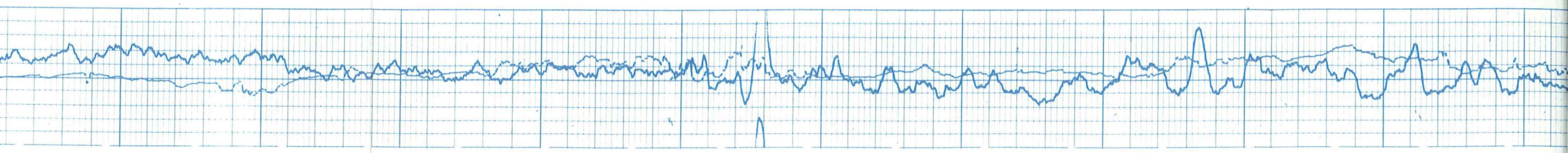
6000

6100

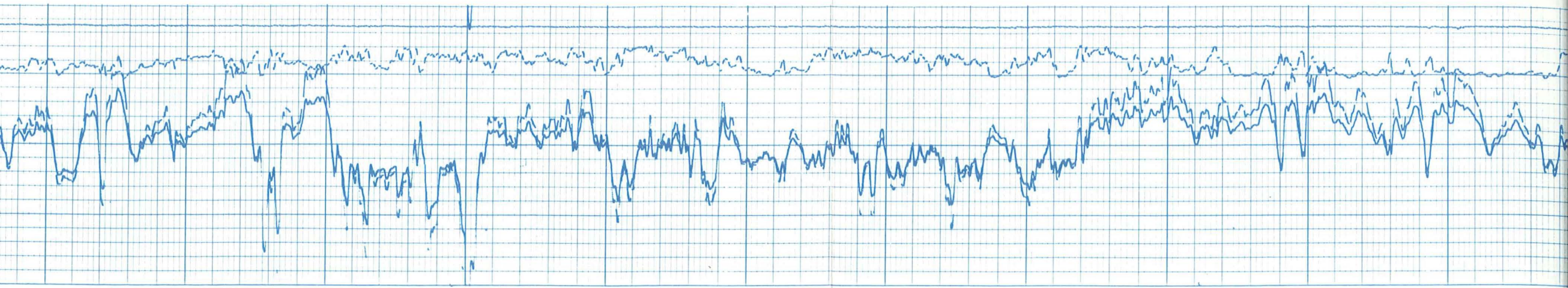
6200

6300

6400







6400

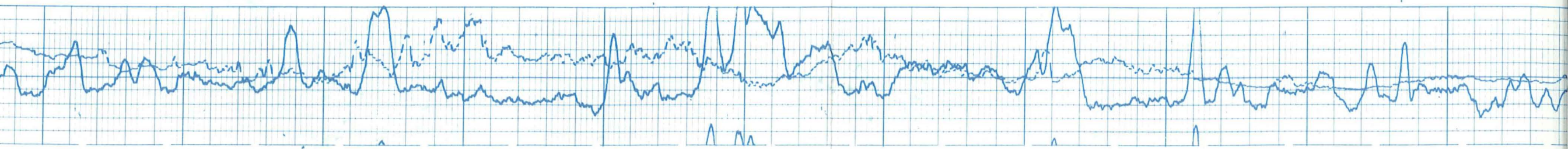
6500

6600

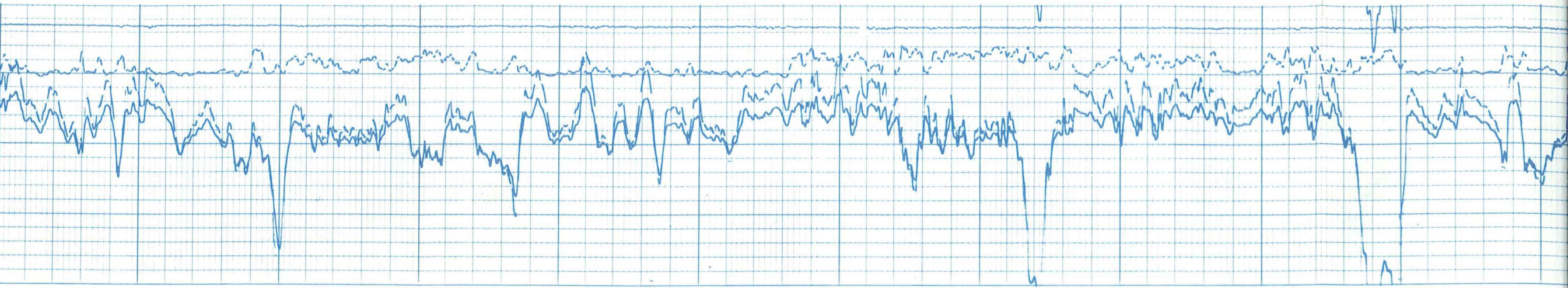
6700

6800

6900







6900

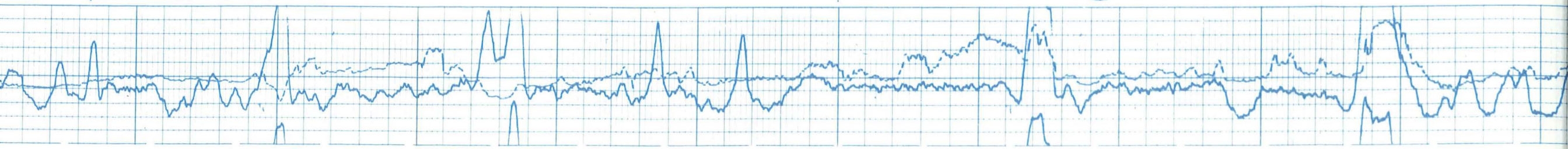
7000

7100

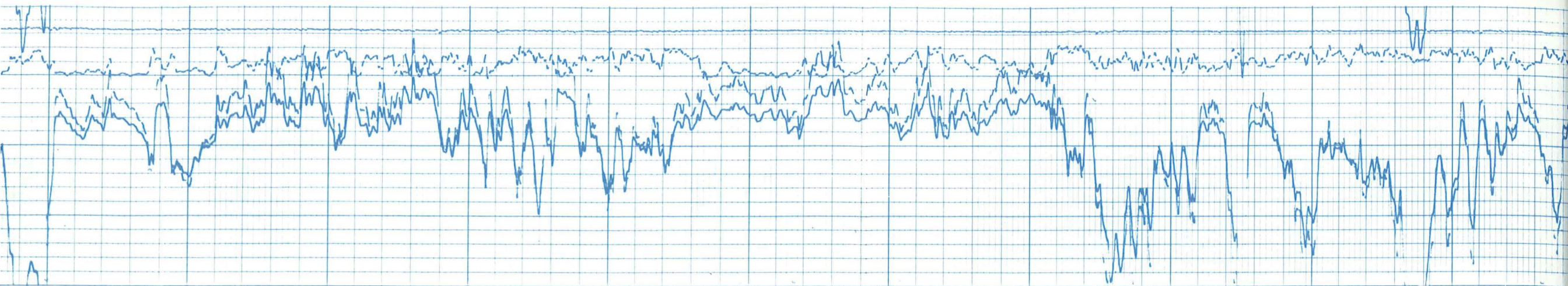
7200

7300

7400







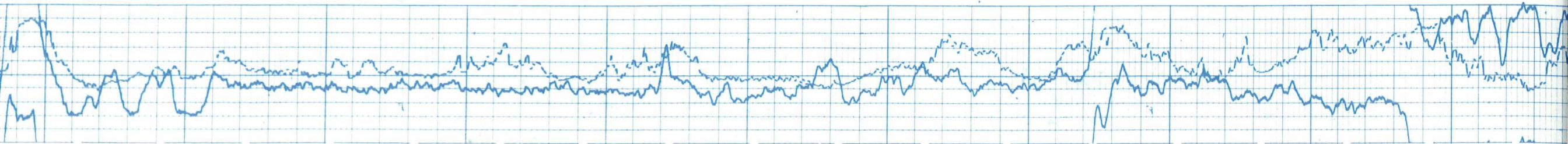
7400

7500

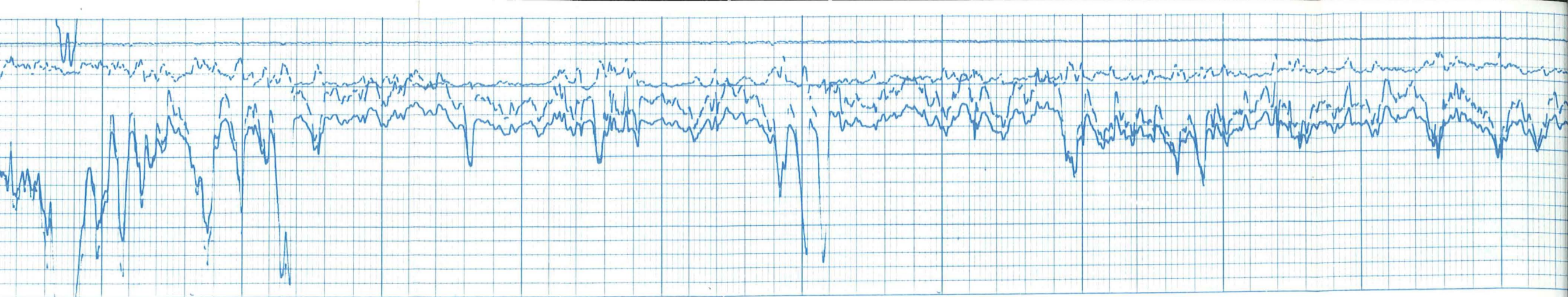
7600

7700

7800







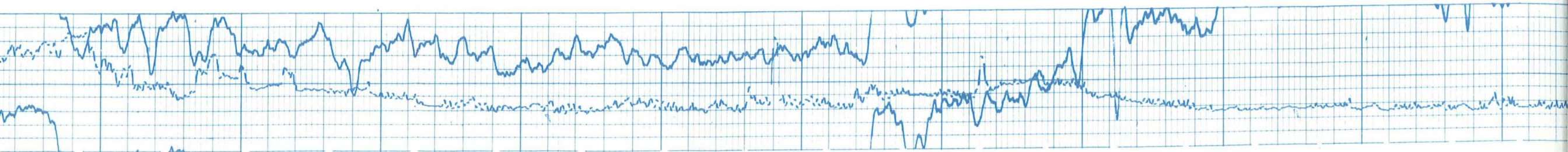
7900

8000

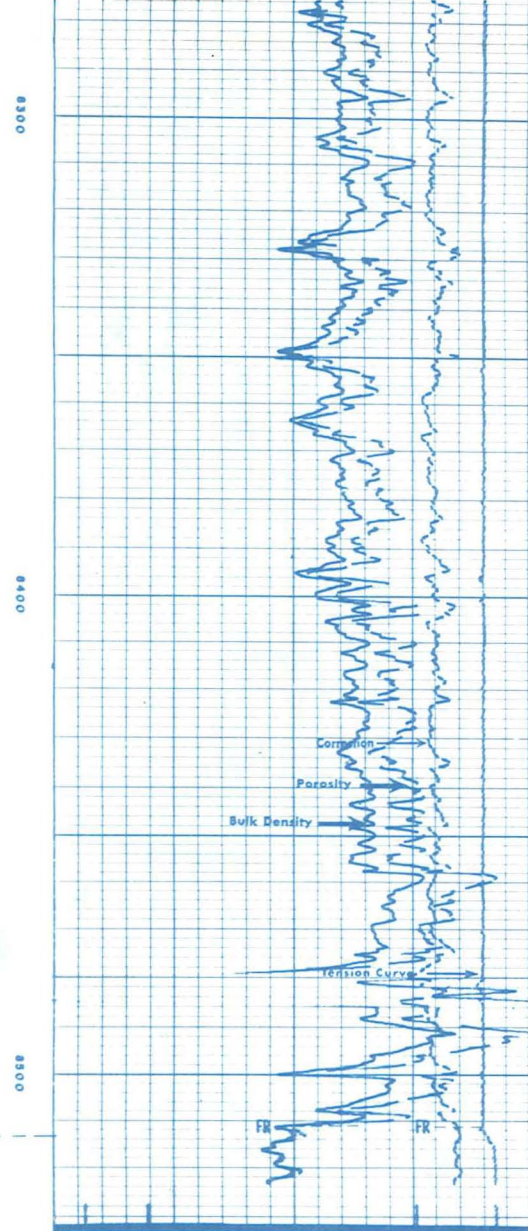
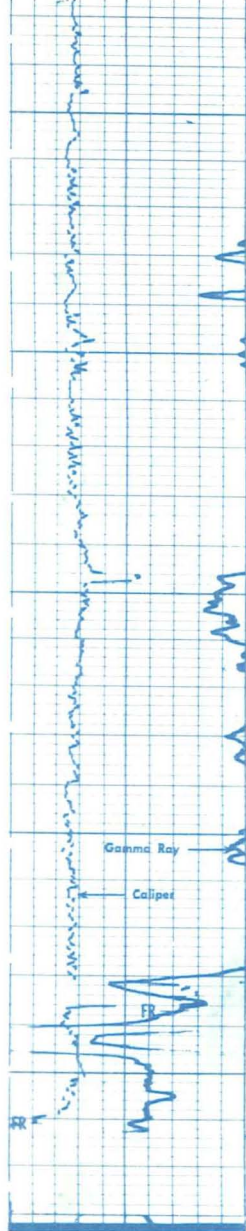
8100

8200

8300







6	16
HOLE SIZE - INCHES	
API UNITS 2 3/4	

30	20	10	0
GRAIN DENSITY—2.65 GM CC		FLUID DENSITY—1.00 GM CC	
CORRECTION			

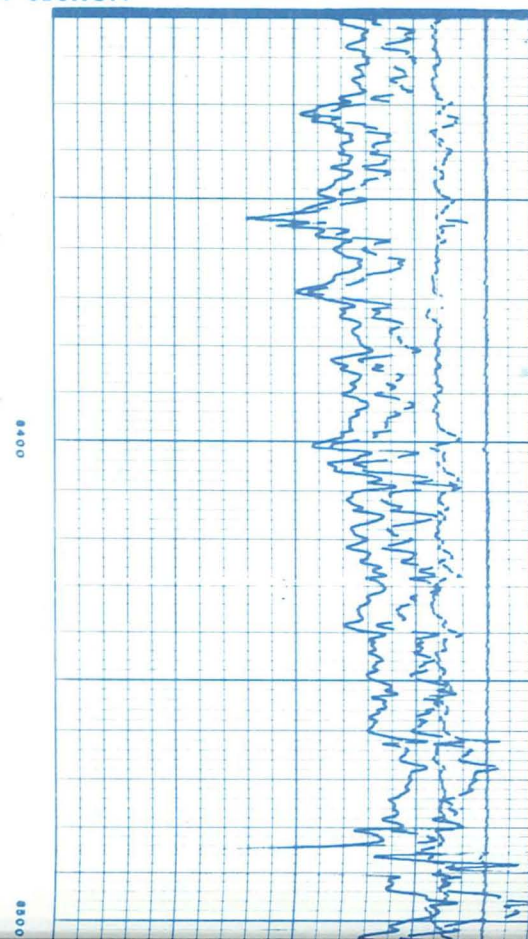
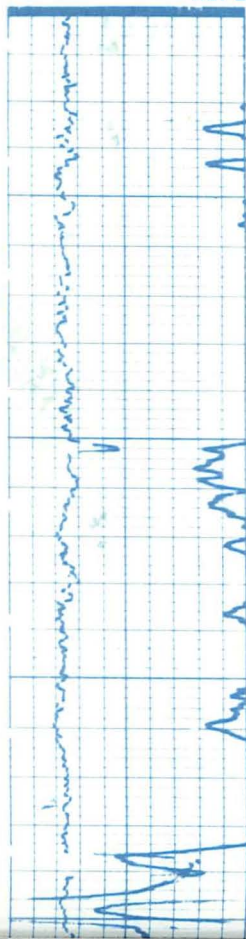
GAMMA RAY & CALIPER

DEPTH

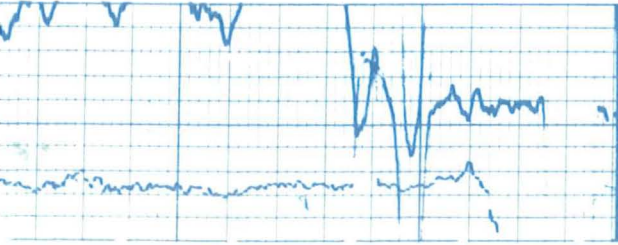
BULK DENSITY GRAMS/CC

Company	Drillers T.D.
Well	Log F.R.
Field	Log T.D.
County	Elevations:
State	K.B. D.F. G.L.

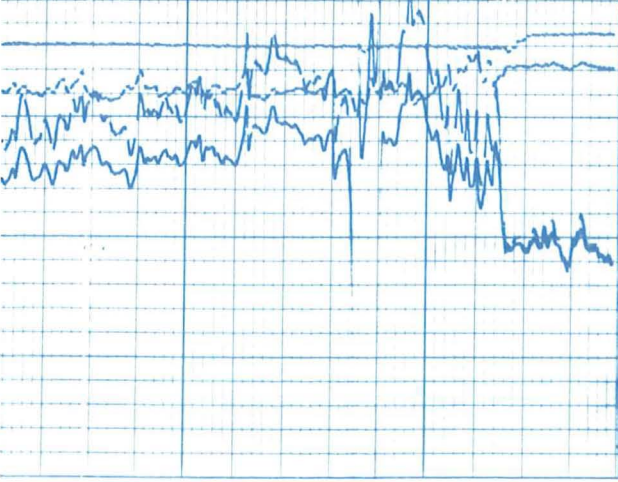
REPEAT SECTION



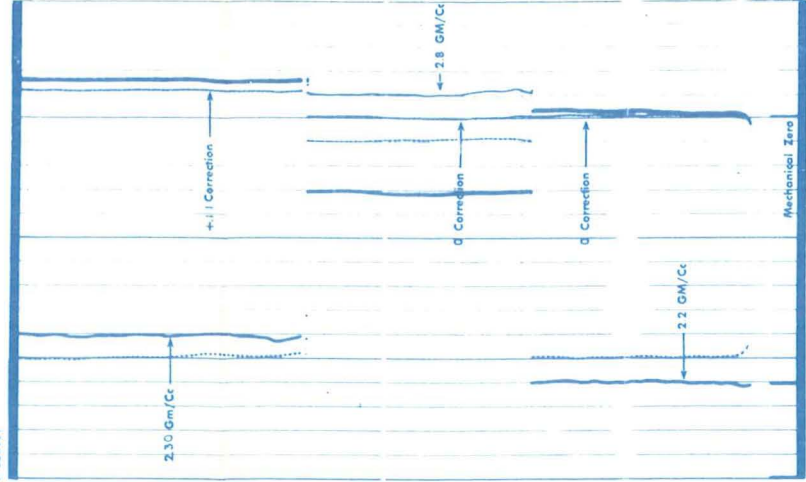
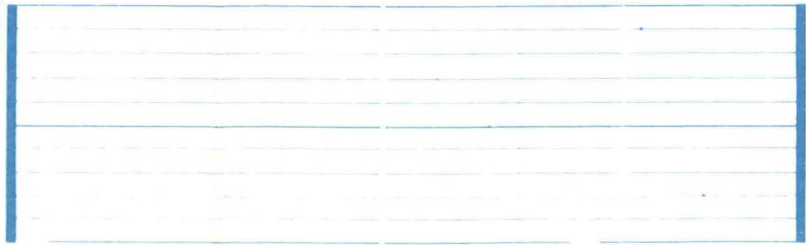




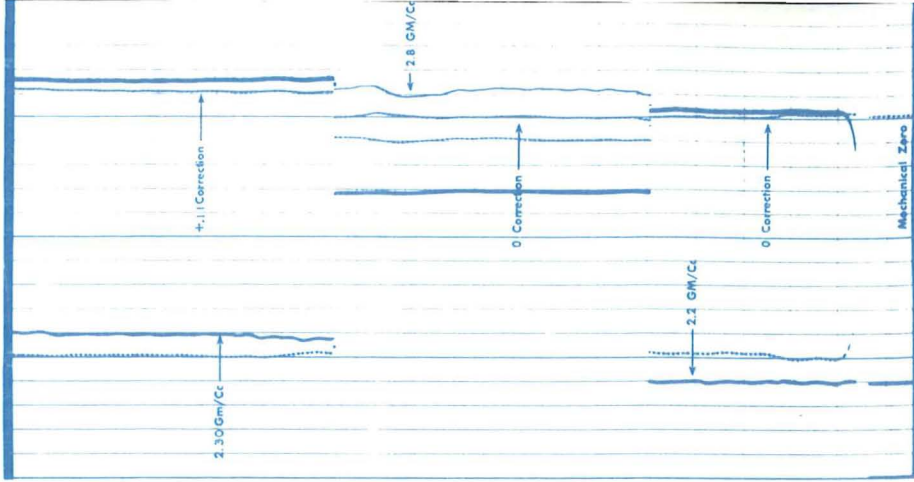
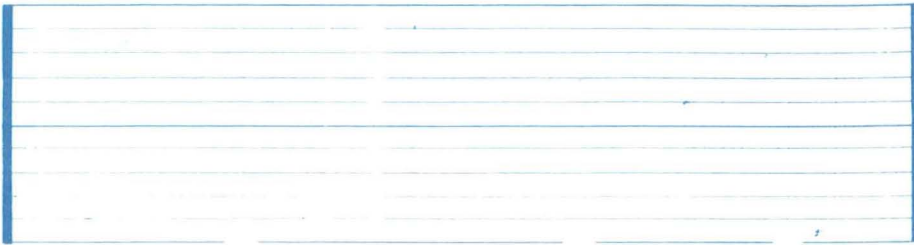
8800



CALIBRATION — AFTER SURVEY



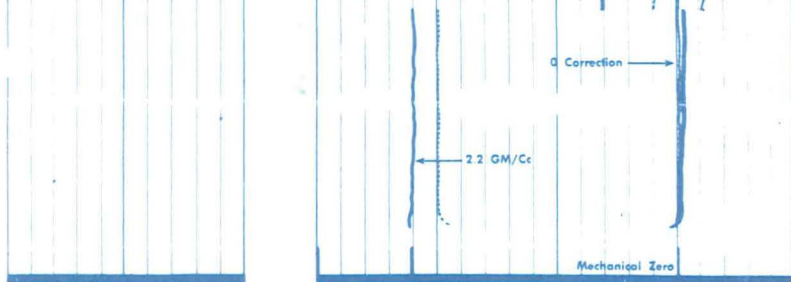
CALIBRATION — BEFORE SURVEY



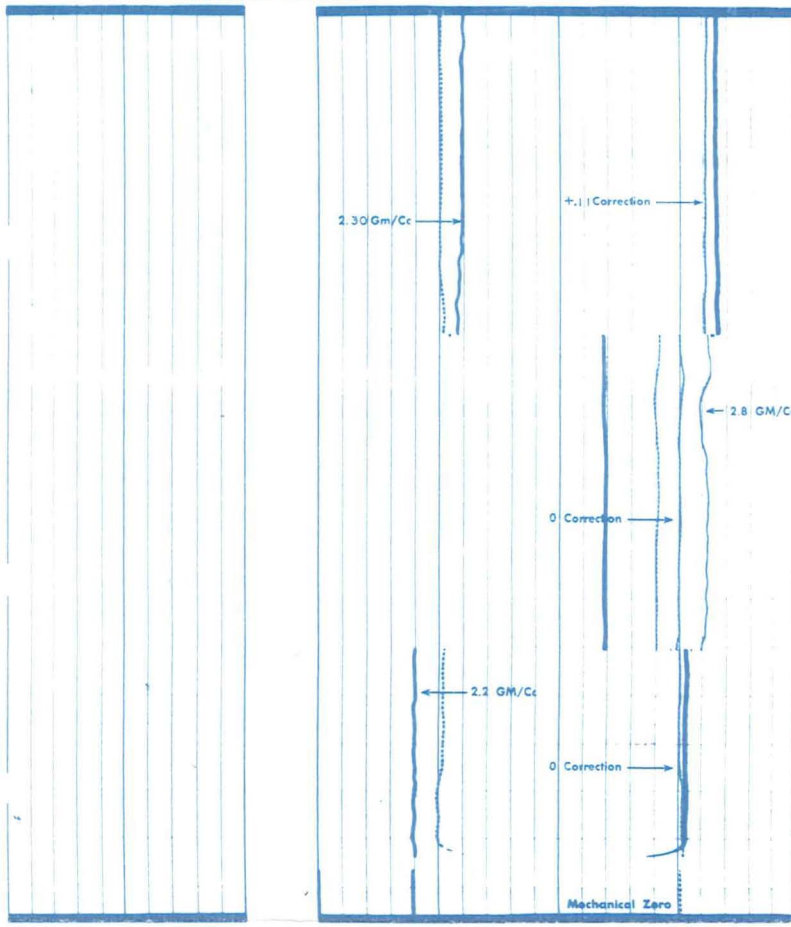
G/R LOG CALIBRATION  
AFTER LOG



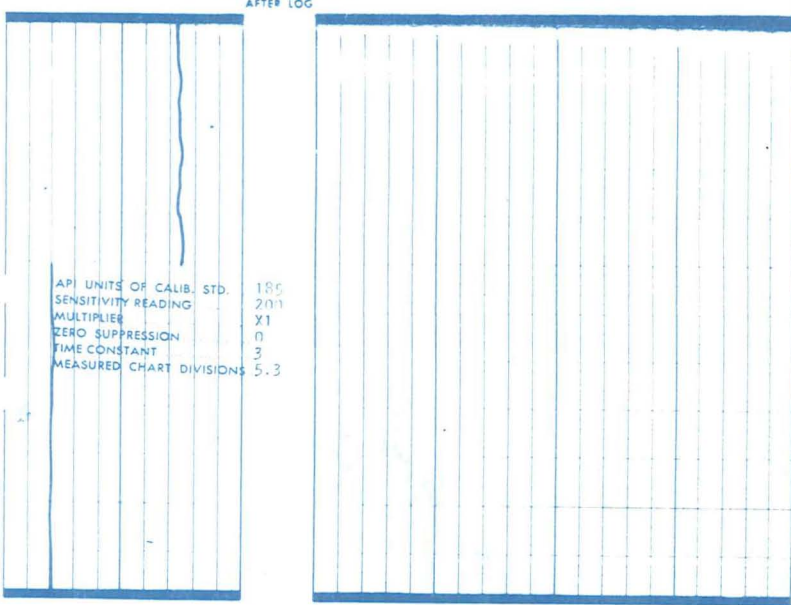




CALIBRATION—BEFORE SURVEY



G/R LOG CALIBRATION AFTER LOG



G/R LOG CALIBRATION BEFORE LOG

