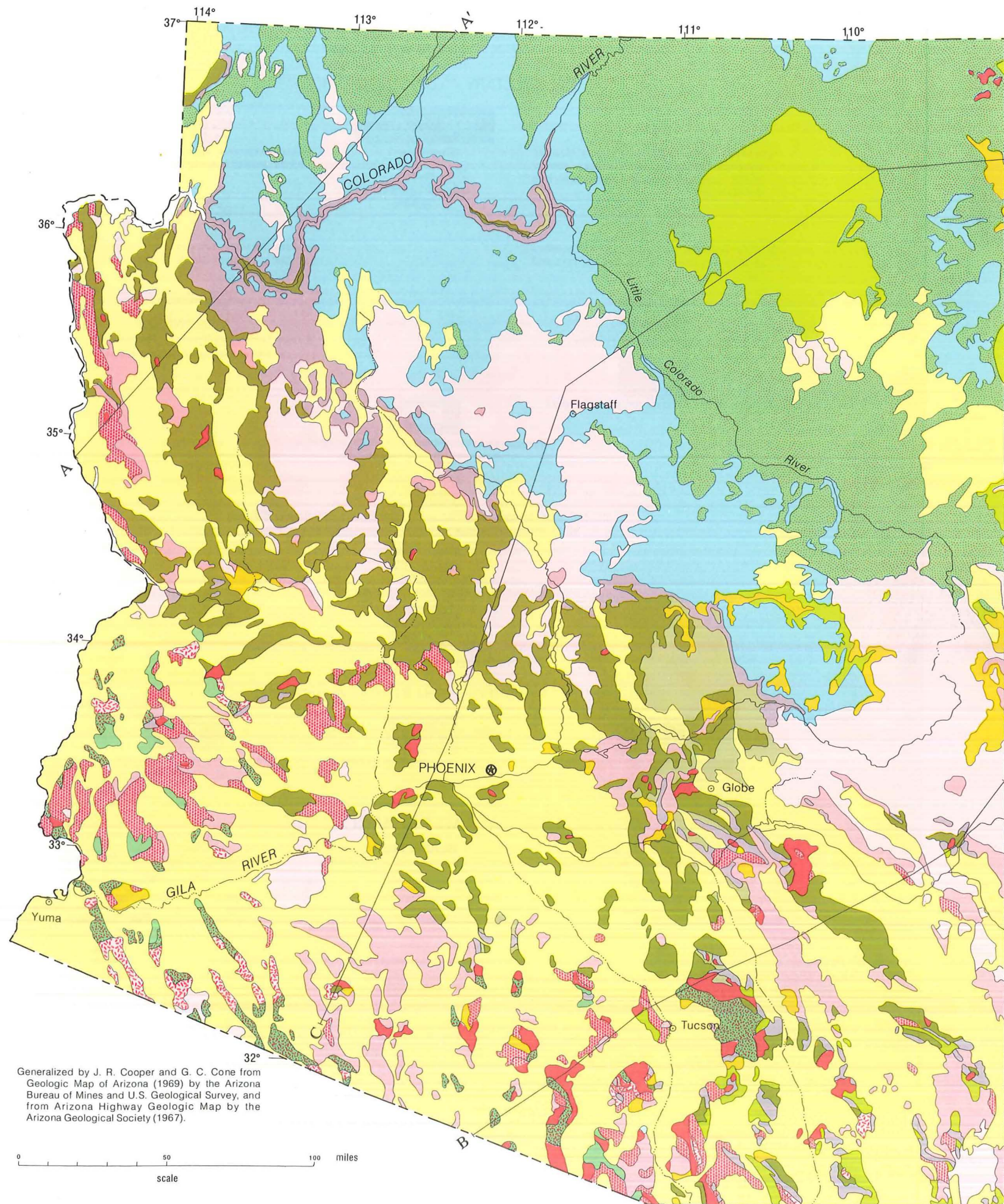
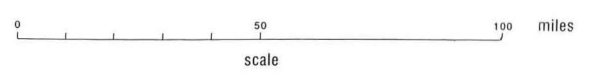


EXPLANATION
SEDIMENTARY AND VOLCANIC ROCKS



<p>QTs</p> <p>Quaternary and upper Tertiary (Pliocene) sedimentary rocks, mostly unconsolidated; includes scarce lava and silicic tuff</p> <p>Ts</p> <p>Middle Tertiary (Miocene and Oligocene) sedimentary rocks; locally include lava and tuff</p> <p>Ks</p> <p>Cretaceous sedimentary rocks</p> <p>JRs</p> <p>Jurassic and Triassic sedimentary rocks</p>	<p>QTv</p> <p>Quaternary and upper Tertiary volcanic rocks, mostly basaltic in composition</p> <p>Tv</p> <p>Middle Tertiary volcanic rocks of silicic to basaltic composition; includes related intrusive rocks</p> <p>TMzv</p> <p>Lower Tertiary to Triassic volcanic rocks; includes some sedimentary rocks</p>	<p>PPs</p> <p>Permian and Pennsylvanian sedimentary rocks; shown only on Colorado Plateau</p> <p>MC Pz</p> <p>Mississippian through Cambrian sedimentary rocks on Colorado Plateau; all Paleozoic sedimentary rocks in Basin and Range province</p> <p>YpC</p> <p>Younger Precambrian sedimentary rocks and intrusive diabase</p> <p>OpC</p> <p>Older Precambrian rocks of all types, including schist, gneiss, and fine- to coarse-grained igneous intrusive rocks</p>	<p>TKu</p> <p>Tertiary and Upper Cretaceous intrusive igneous rocks</p> <p>TMz</p> <p>Post-Paleozoic gneiss and schist</p> <p>KI</p> <p>Mid-Cretaceous to Triassic intrusive igneous rocks</p>	<p>CENOZOIC</p> <p>MESOZOIC</p> <p>PALEOZOIC</p> <p>PRECAMBRIAN</p>
--	--	---	---	---

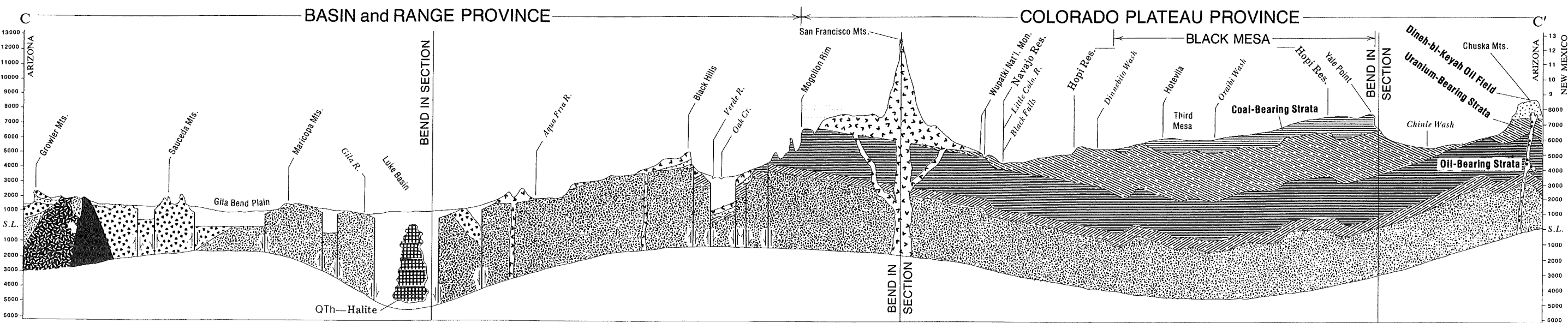
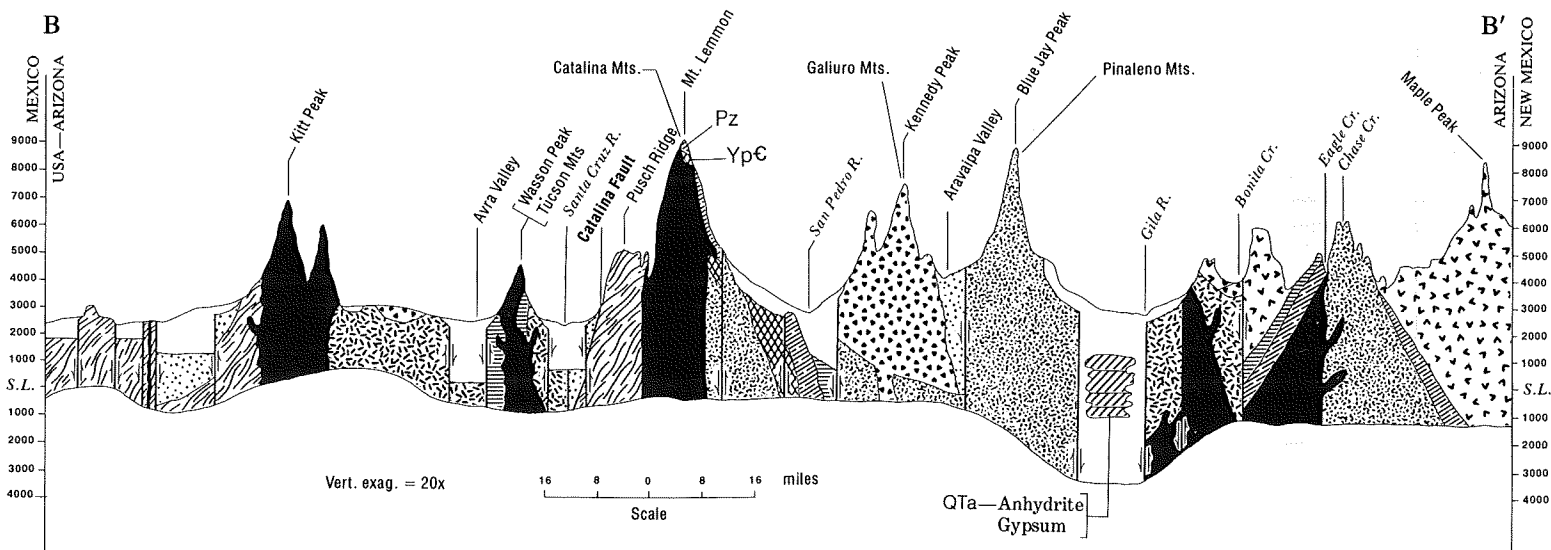
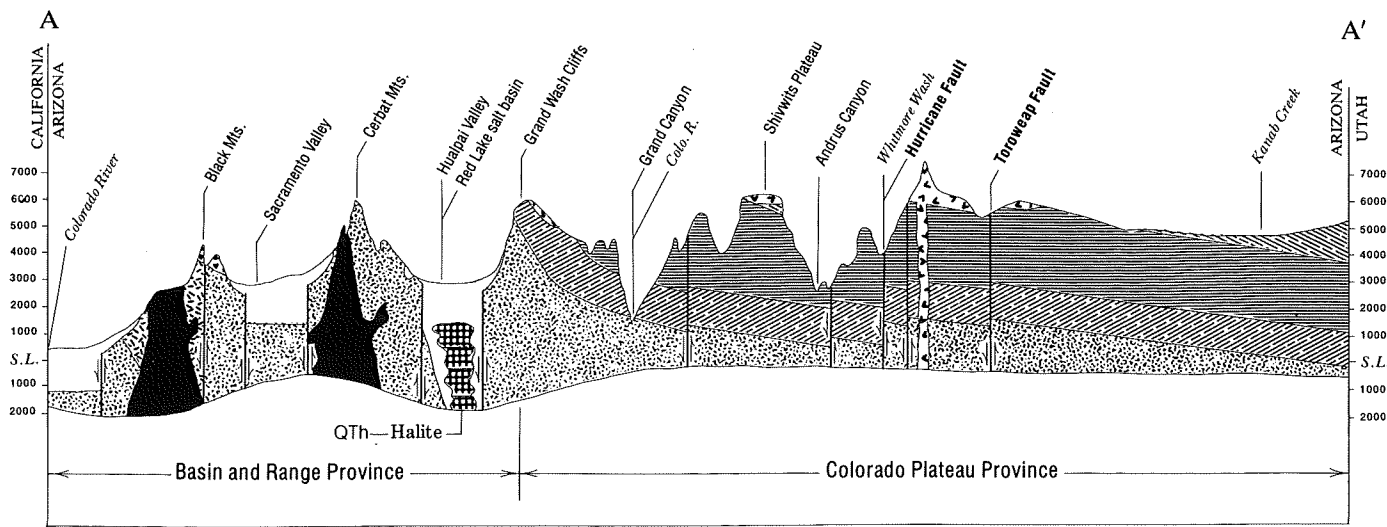
Generalized by J. R. Cooper and G. C. Cone from Geologic Map of Arizona (1969) by the Arizona Bureau of Mines and U.S. Geological Survey, and from Arizona Highway Geologic Map by the Arizona Geological Society (1967).



GEOLOGIC MAP and CROSS-SECTIONS
of
ARIZONA

UNIVERSITY OF UTAH
RESEARCH INSTITUTE
EARTH SCIENCE LAB.

AREA
AZ
Geol 4
Xsect



EXPLANATION SEDIMENTARY AND VOLCANIC ROCKS

<p>QTs</p> <p>Quaternary and upper Tertiary (Upper Miocene-Pliocene) sedimentary rocks, mostly unconsolidated; includes scarce lava and silicic tuff</p>	<p>Evaporites</p> <p>QTh—Halite QTa—Anhydrite Gypsum</p>	<p>QTV</p> <p>Quaternary and upper Tertiary volcanic rocks, mostly basaltic in composition</p>	CENOZOIC
<p>Ts</p> <p>Middle Tertiary (Miocene and Oligocene) sedimentary rocks; locally include lava and tuff</p>	<p>Tv</p> <p>Middle Tertiary volcanic rocks of silicic to basaltic composition; includes related intrusive rocks</p>	MESOZOIC	
<p>Ks</p> <p>Cretaceous sedimentary rocks</p>	<p>TMzv</p> <p>Lower Tertiary to Triassic volcanic rocks; includes some sedimentary rocks</p>		PALEOZOIC
<p>JRs</p> <p>Jurassic and Triassic sedimentary rocks</p>	<p>PPs</p> <p>Permian and Pennsylvanian sedimentary rocks; shown only on Colorado Plateau</p>	PRECAMBRIAN	
<p>MC</p> <p>Pz</p> <p>Mississippian through Cambrian sedimentary rocks on Colorado Plateau; all Paleozoic sedimentary rocks in Basin and Range province</p>	<p>YpC</p> <p>Younger Precambrian sedimentary rocks and intrusive diabase</p>		PRECAMBRIAN
<p>OpC</p> <p>Older Precambrian rocks of all types, including schist, gneiss, and fine- to coarse-grained igneous intrusive rocks</p>	<p>OTHER METAMORPHIC AND INTRUSIVE IGNEOUS ROCKS</p> <p>Tku</p> <p>Tertiary and Upper Cretaceous intrusive igneous rocks</p>	<p>TMz</p> <p>Post-Paleozoic gneiss and schist</p>	

Cross-Sections compiled by H. W. Peirce