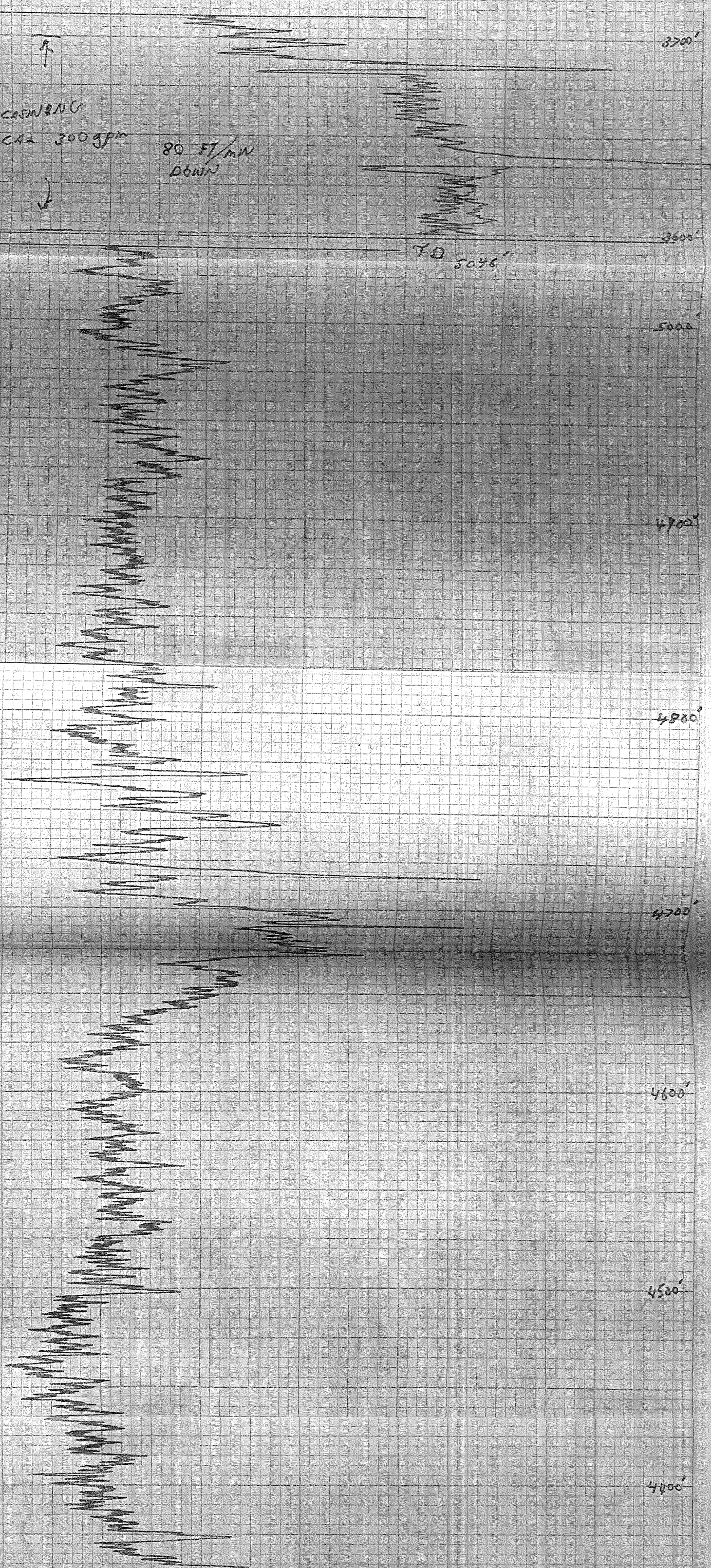


602971-11

CASING  
CAL 300 gpm

80 FT/MIN  
DOWN

TD 5046'



3700'

3800'

5000'

4700'

4880'

4700'

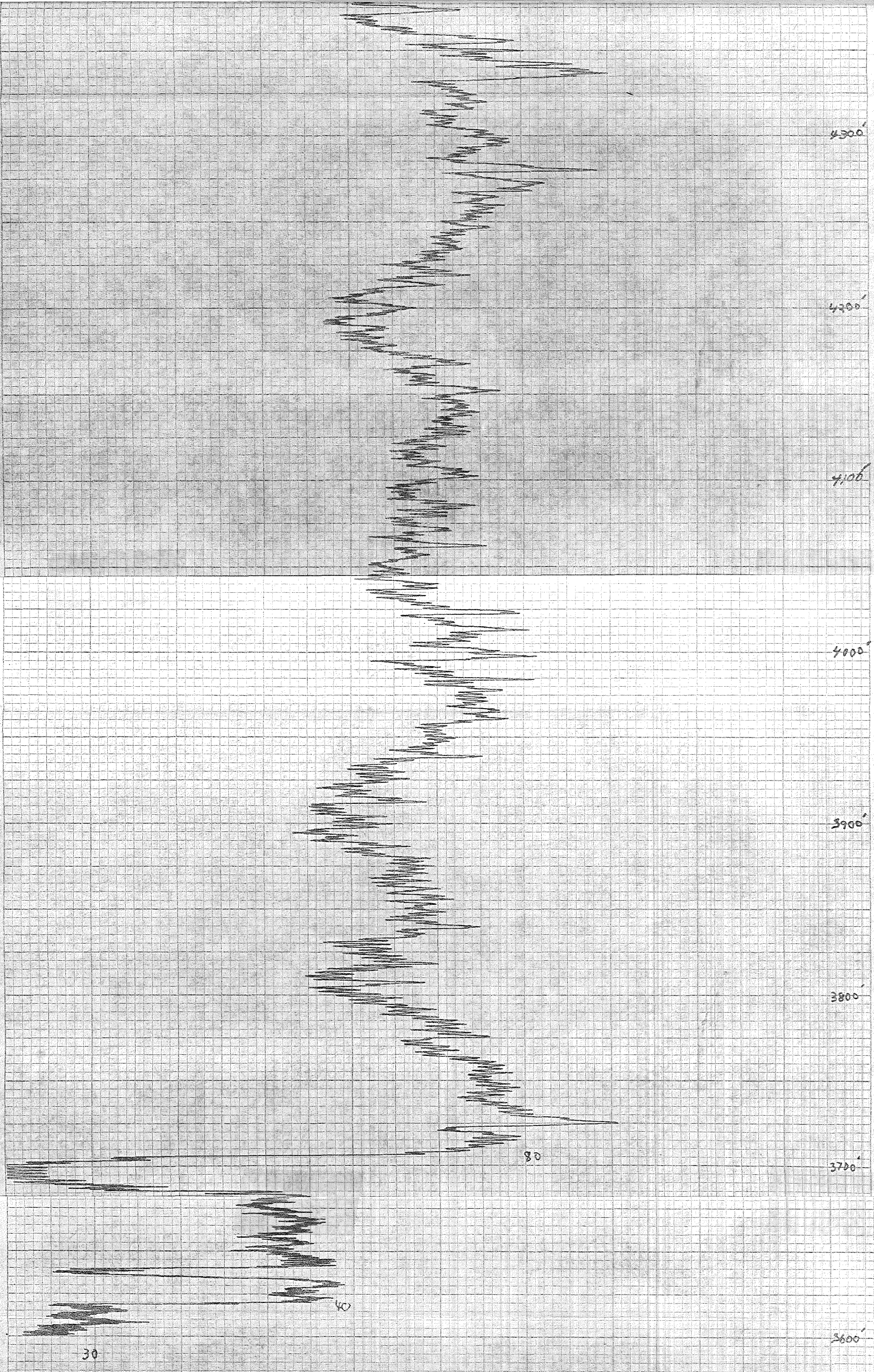
4600'

4500'

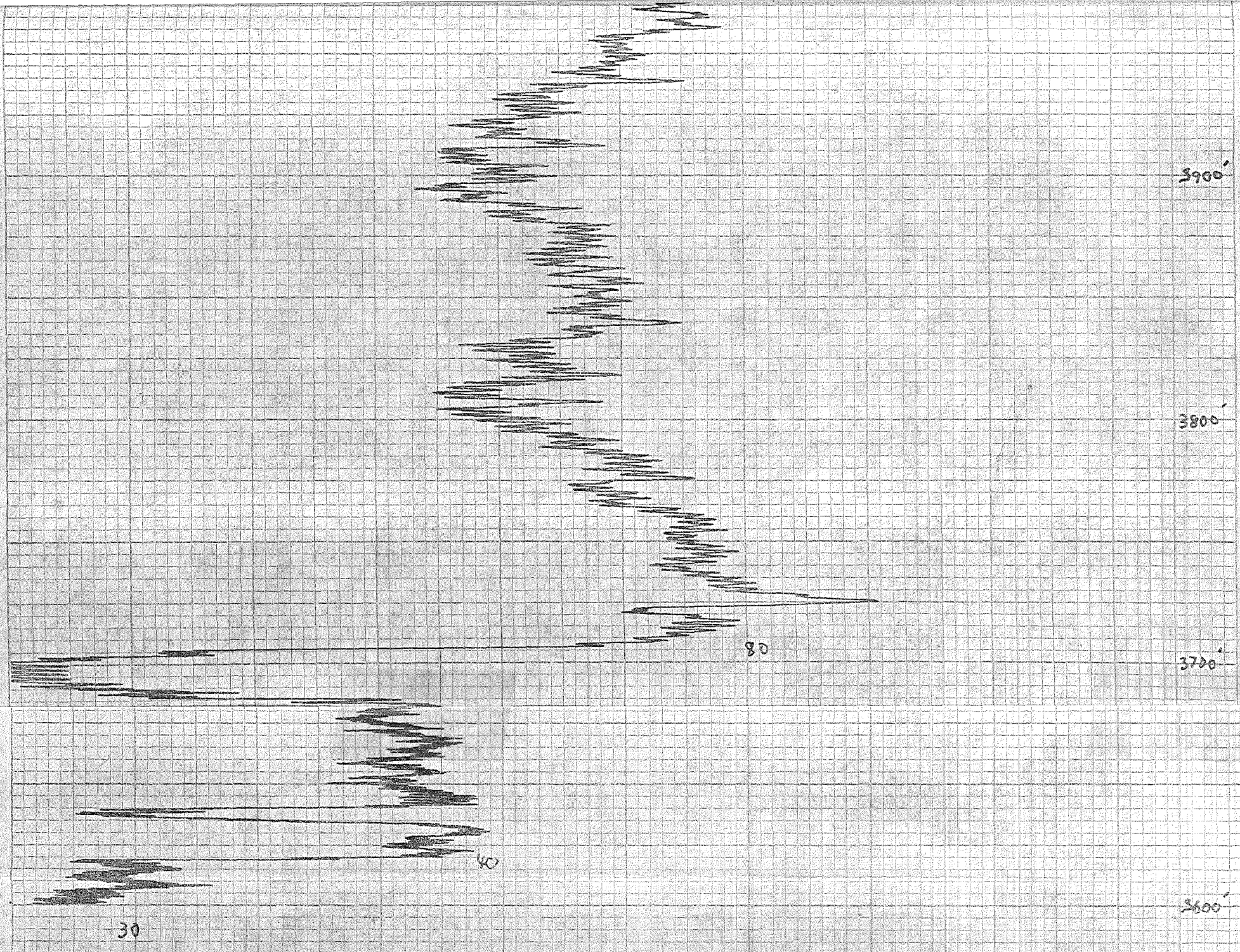
4400'

HEWLETT-PACKARD 9220-0284-1









TEST 1A BASE 6.7

100' INDICATED = 98.46' ACTUAL

RRGP # 1

9-17-82

500 pm  
1700

SPINNER LOG

SCALE 0-50 MV

WELL IS FLOWING 300 gpm

RATE FT/MIN = 80

bmt  
✓

Depth: 3000' to 5046'