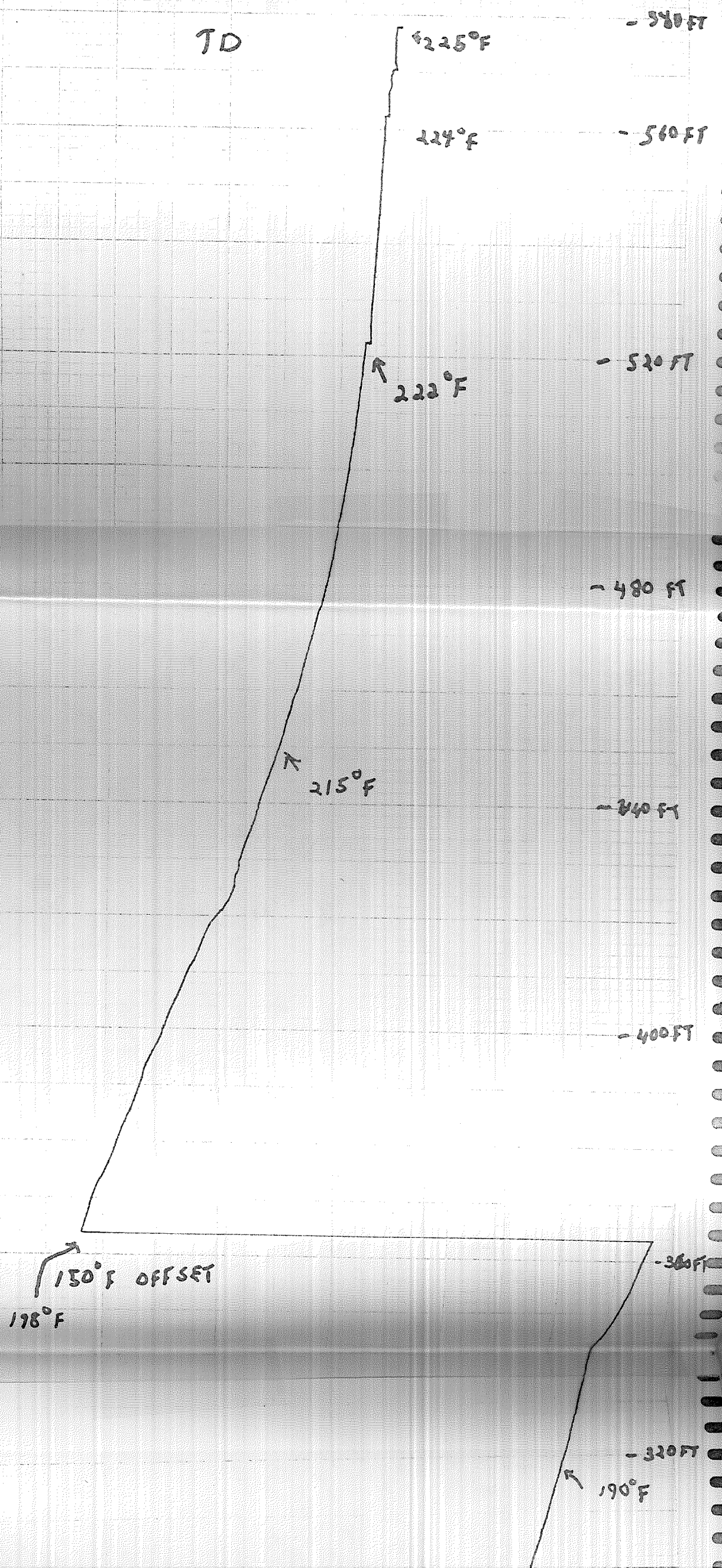


TD



178°F

- 320 FT

190°F

- 280 FT

- 270 FT

- 200 FT

172°F

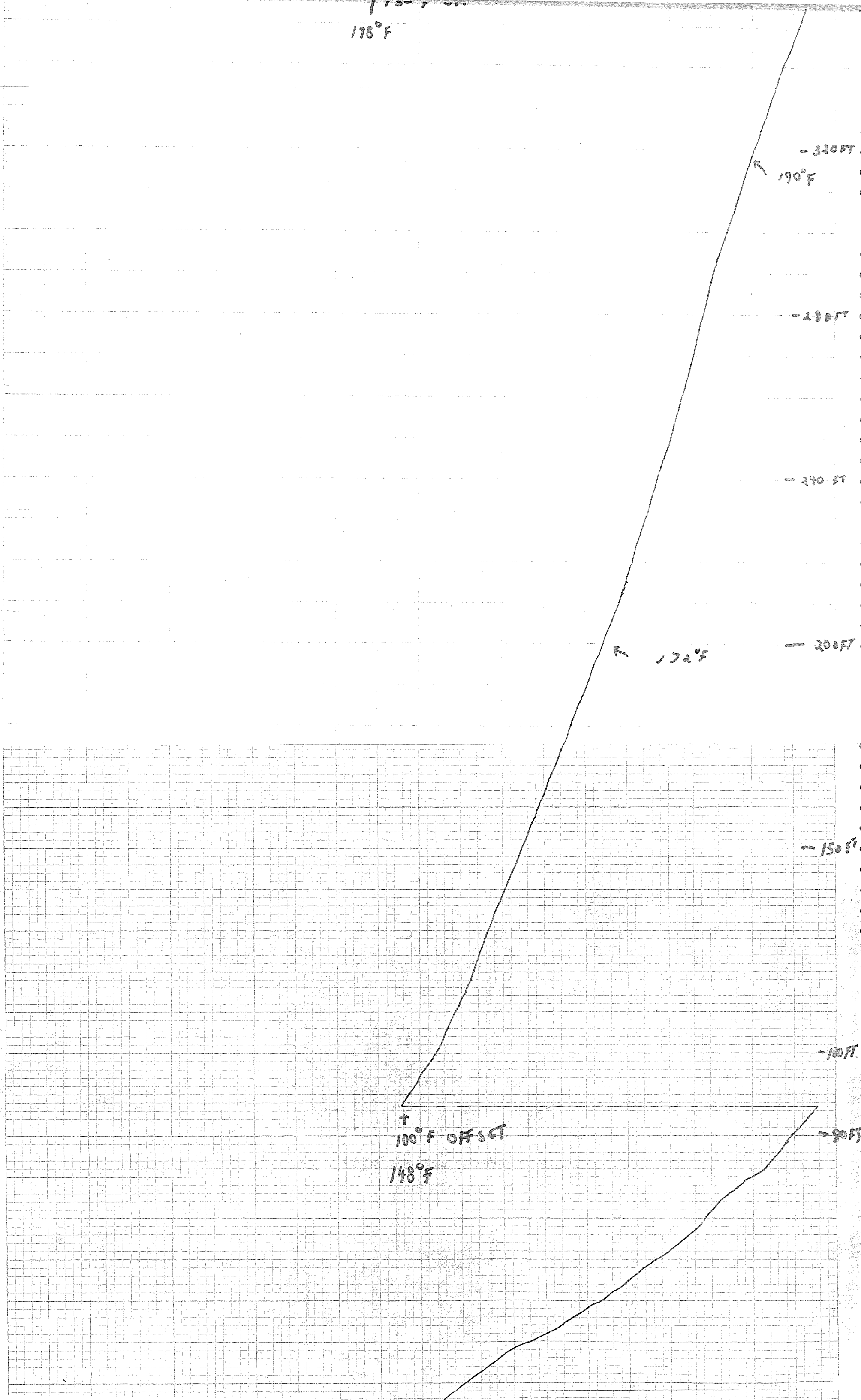
- 150 FT

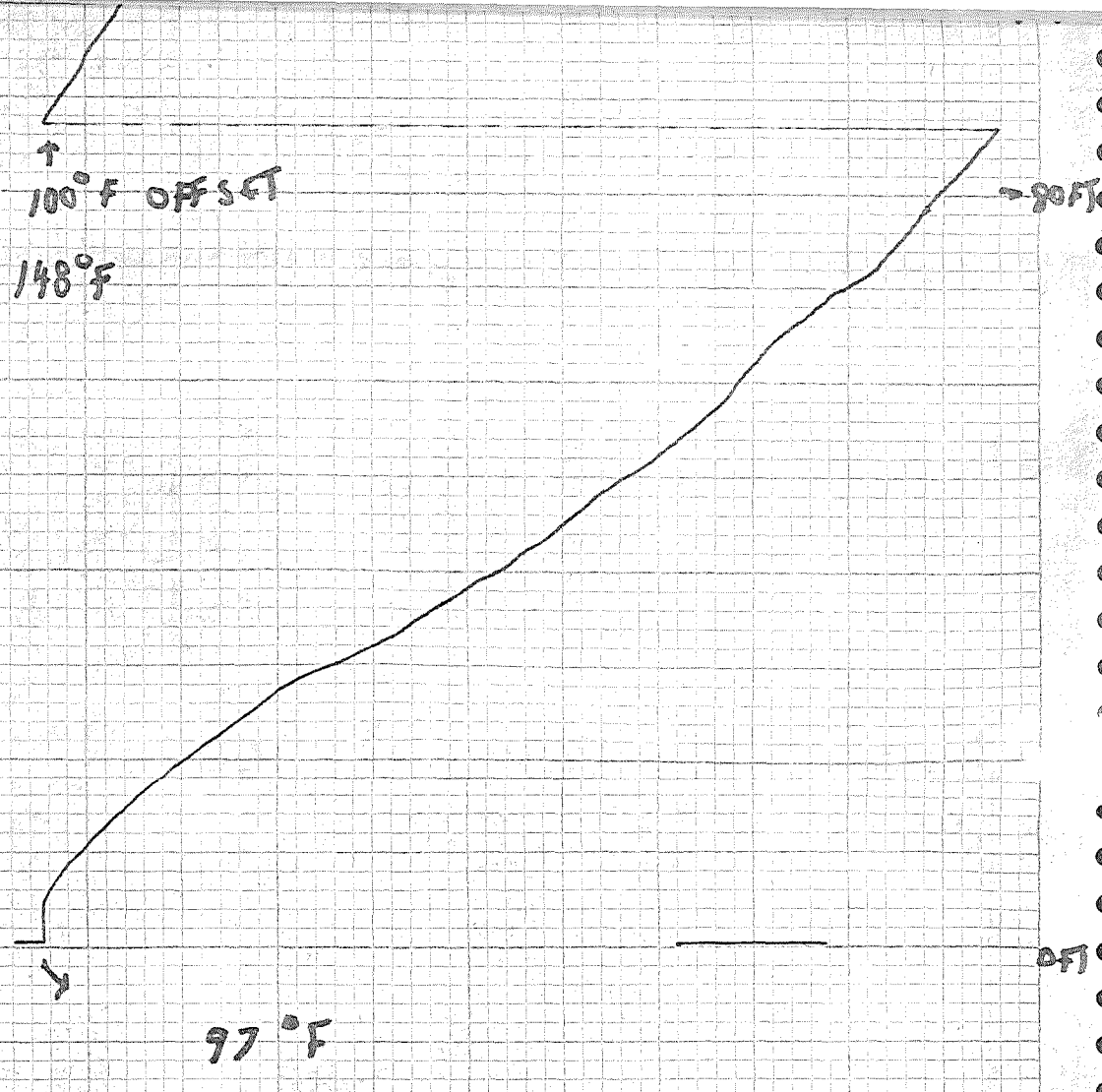
- 100 FT

- 80 FT

↑
100°F OFFSET

148°F





100 FT INDICATED = 98.46' ACTUAL

50°F OFFSET
 SCALE 0 - 100 MV
 1 MV = 1°F

RR MW # 2
 TO 570'
 STARTED WELL FLOWING 6-6 PM
 TEMP LOG IN
 Depth: 0' to 580'

8-11-82
 09:30