

GL02971-14

— 1256' TD

↑ 222°F

— 1290'

— 1200'

— 1160'

— 1120'

— 1080'

— 1040'

— 1000'

-1000'

-960'

-920'

-880'

-840'

R 221°F

-800'

-760'

-720'

-680'

680'

↖ 220°F

640'

600'

560'

520'

480'

↖ 217°F

440'

400'

360'



360'

212° F

320'

280'

206° F

240'

200'

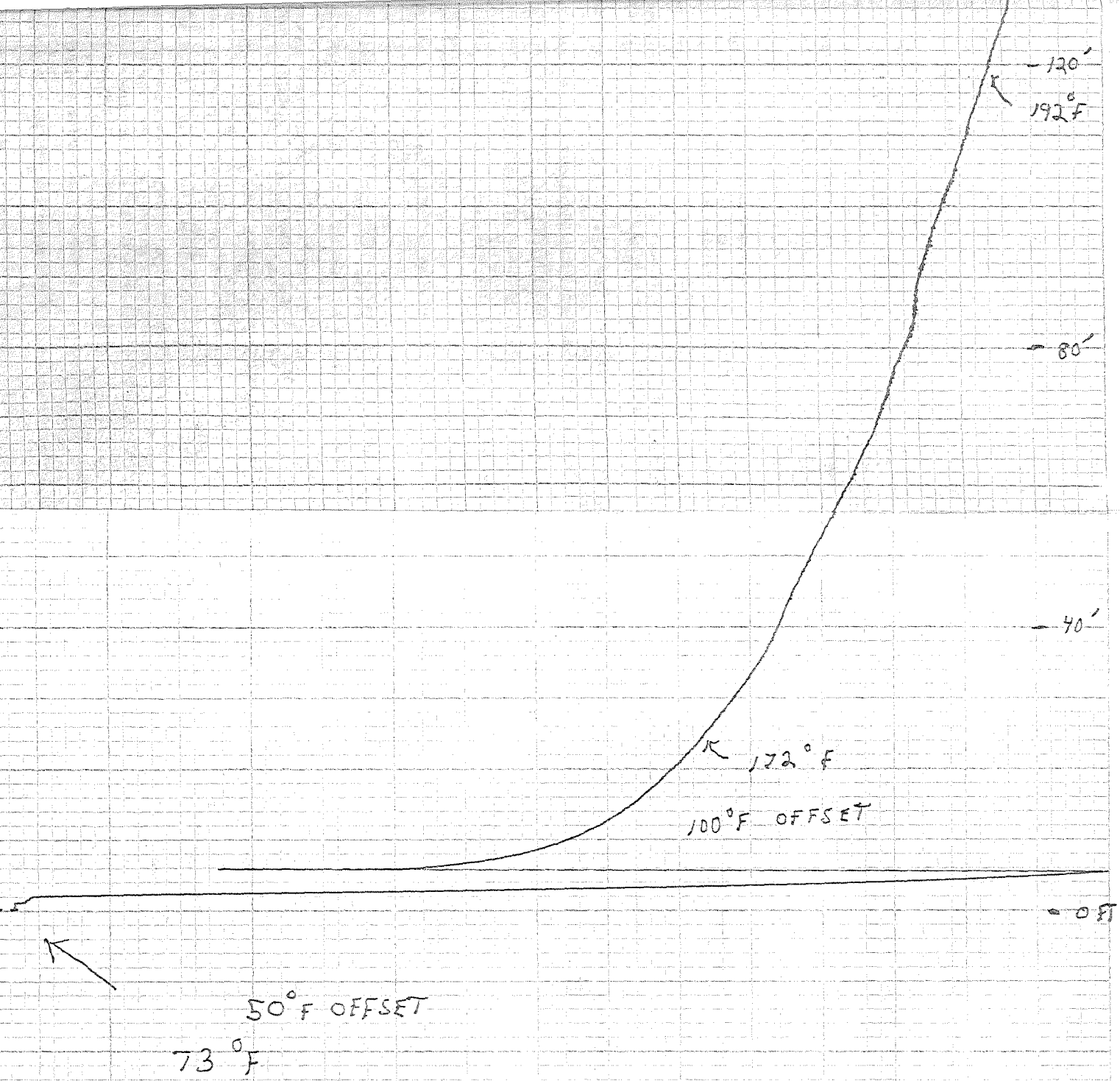
160'

150° F OFFSET
176° F

120'

192° F

80'



100' INDICATED = 98.46' ACTUAL

TEST 1B

RRMW #1

8-12-82

1:00 PM

SCALE 0-100 MV

1 MV = 1°F

TEMP LOG IN

RATE FT/MIN = 2.5

Depth: 0' to 1256'

W IS FLOWING 10 GPM