

GL02971-20

-4600'

-4640'

-4680'

-4720'

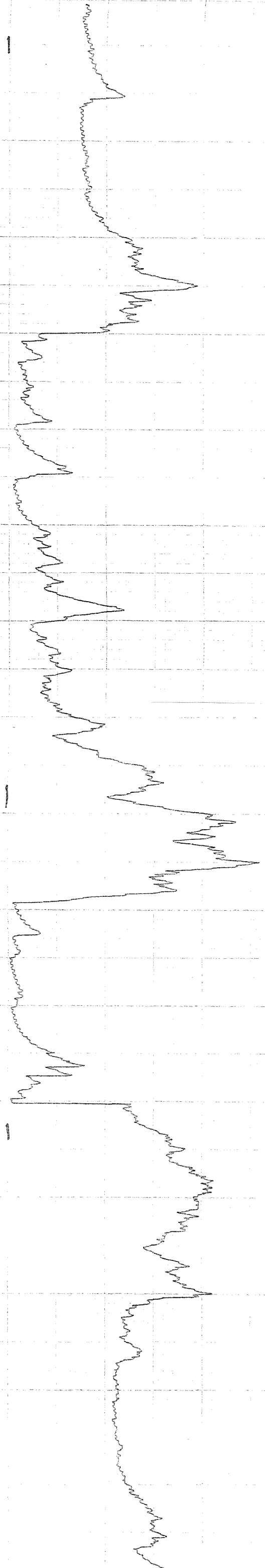
-4760'

-4800'

-4820'

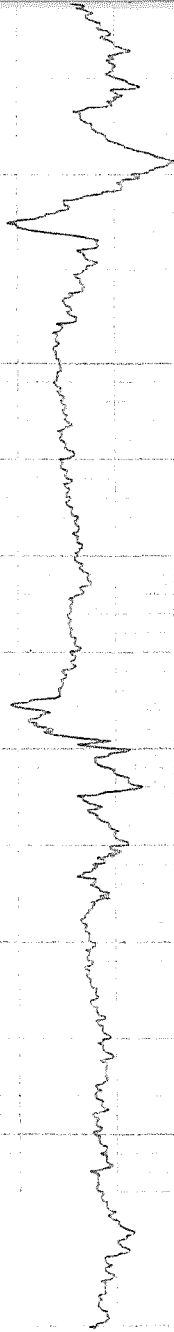
-4860'

-4900'



UNIVERSITY OF CALIFORNIA

196



4720'

4880'

4640'

4600'

↑
↓
BASELINE
0

100' INDICATED = 98.46' ACTUAL

TEST 1A

RRGE #5

8-26-82

1300

SCALE 0-500 MV

SPINNER FLOW LOG
WELL IS CLOSED IN

Depth: 4600' to 4800'

RATE FT/MIN IN = 95'
UP = 105'