

G102971-3

4800'

4700'

4600'

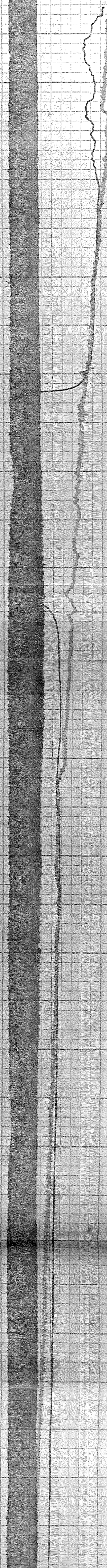
4500'

4400'

4300'

4200'

4100'



4000'

3900'

3800'

3700'

3600'

3500'

3400'

3300'

3200'

3100'

3000'

2900'

2800'

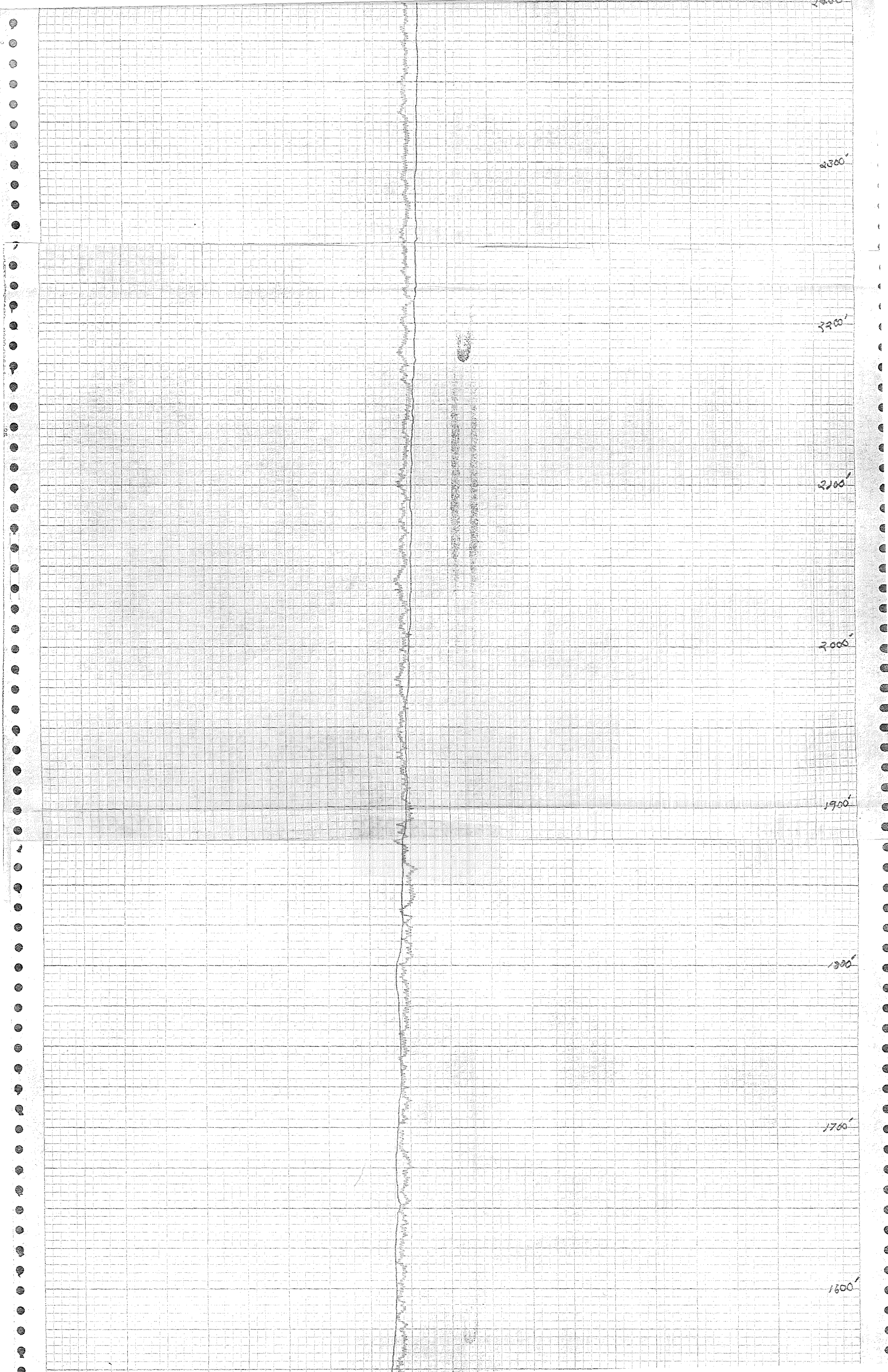
2700'

2600'

2500'

2400'





2300'

2200'

2100'

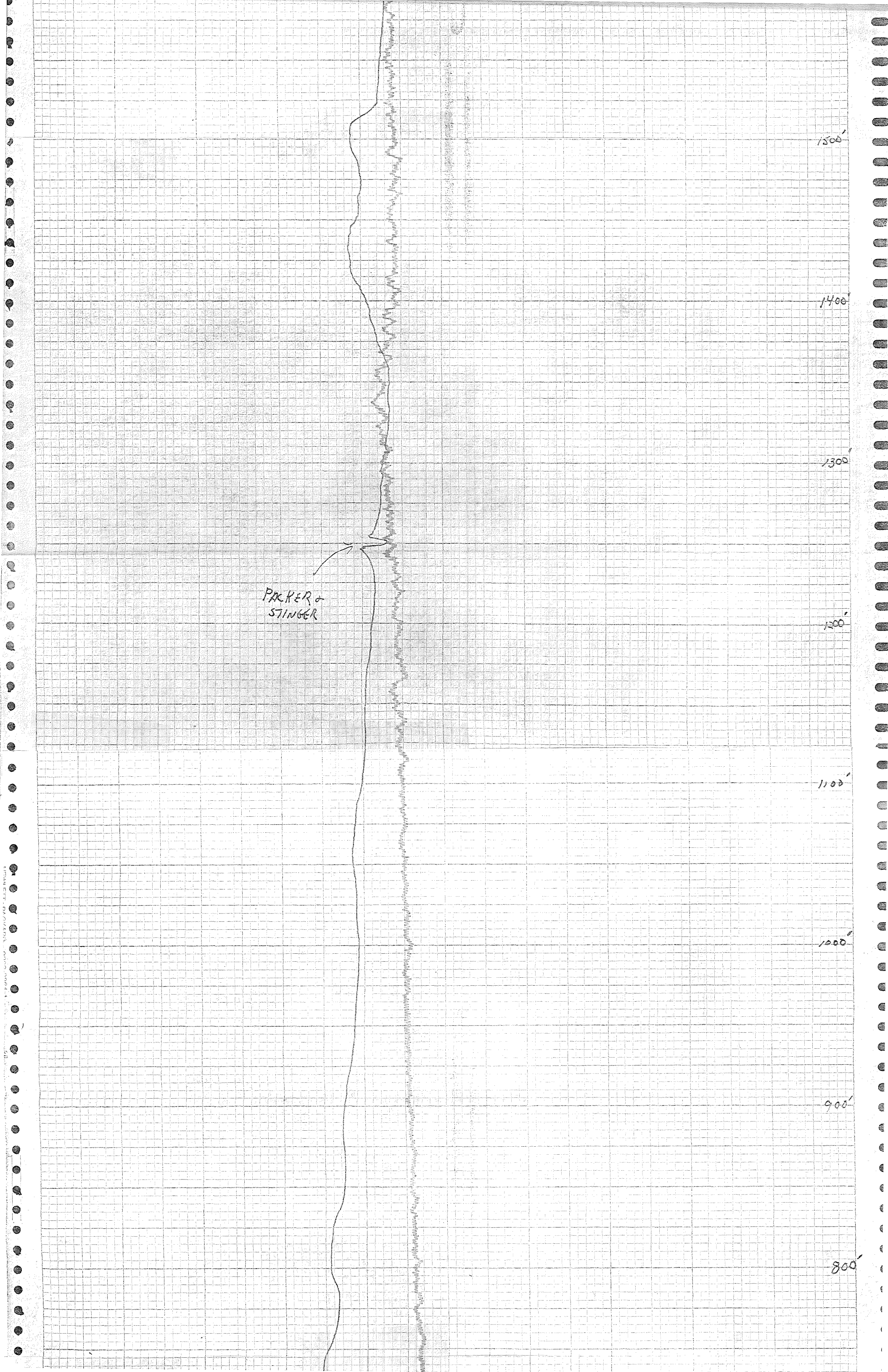
2000'

1900'

1800'

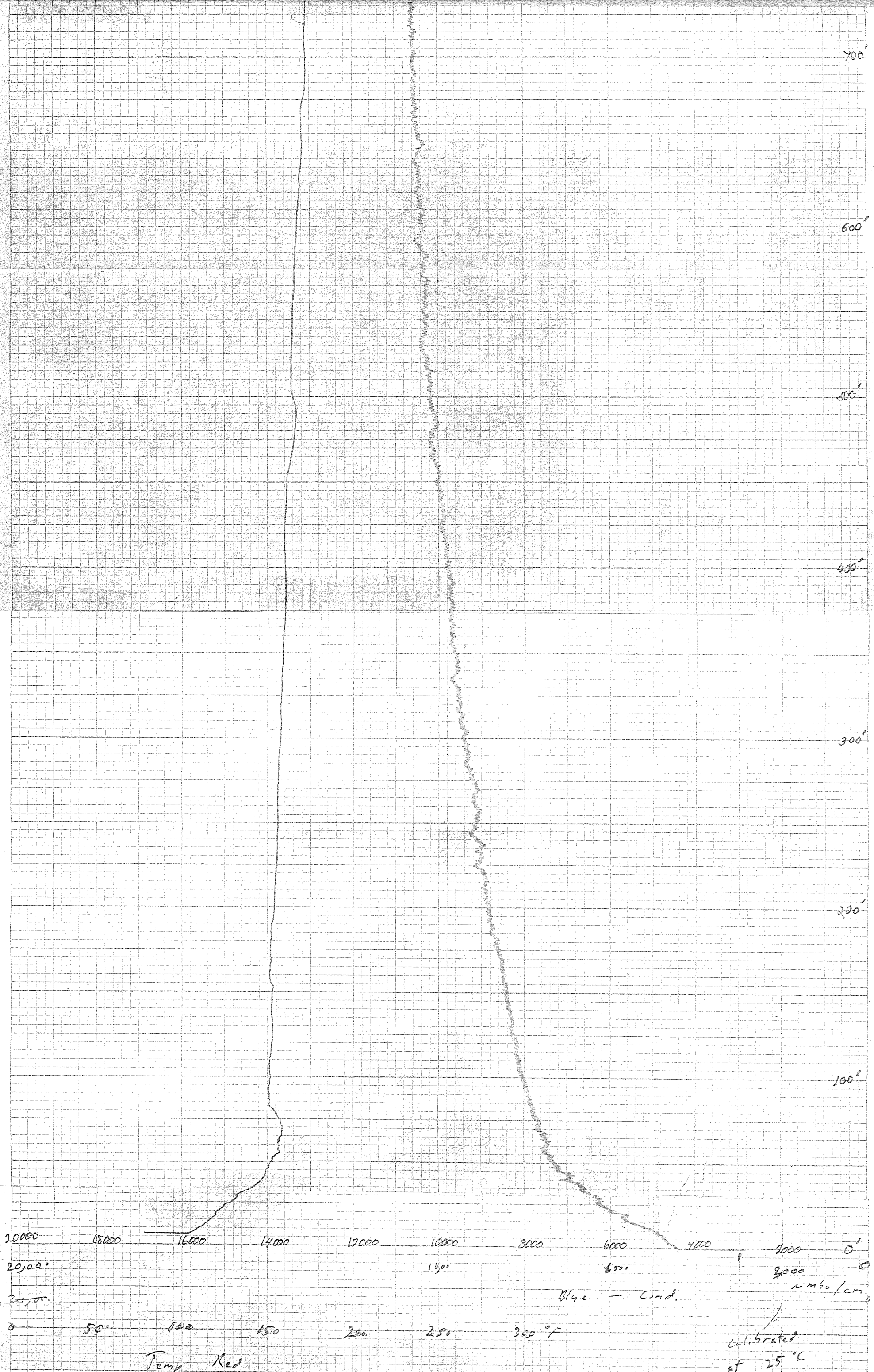
1700'

1600'



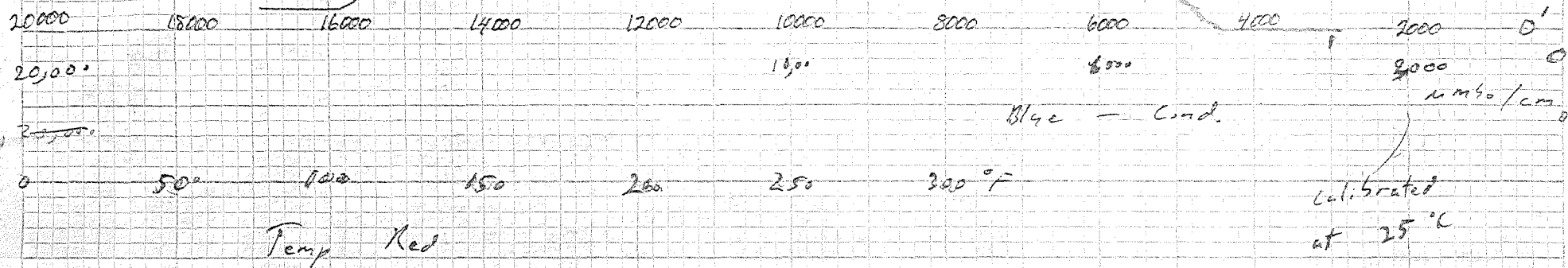
PARKER &
STINGER

HEWLETT-PACKARD 9280-078



T + 18 conductivity

calibrated at 25°C



Test 1B conductivity

RRGP - #5

flow = 0

Rate 50" / min to 4560

25" / min to bottom

9-7-82

0930

#1