

End of Section  
4 of 5

GL02971-34

16:22

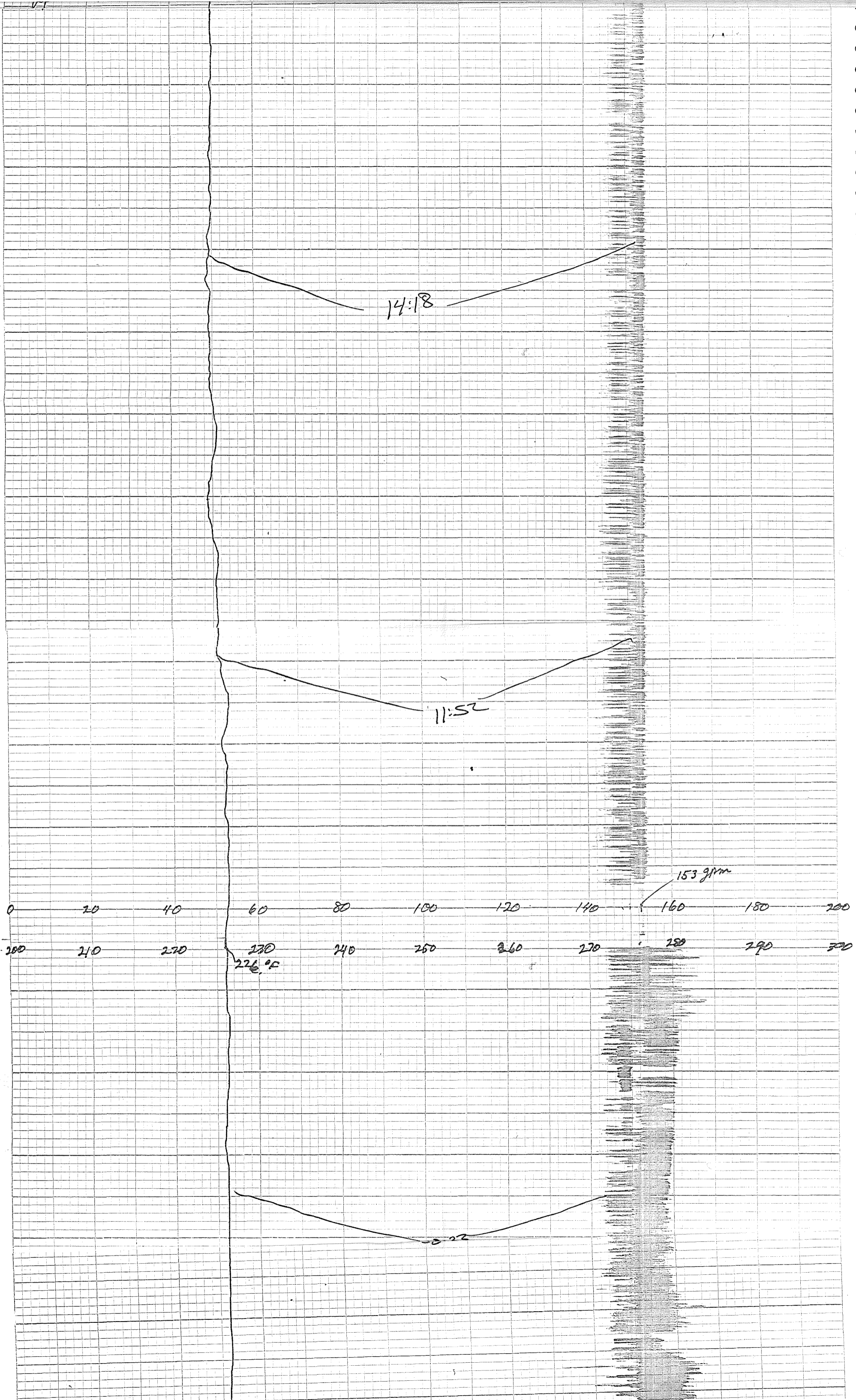
11-18-82

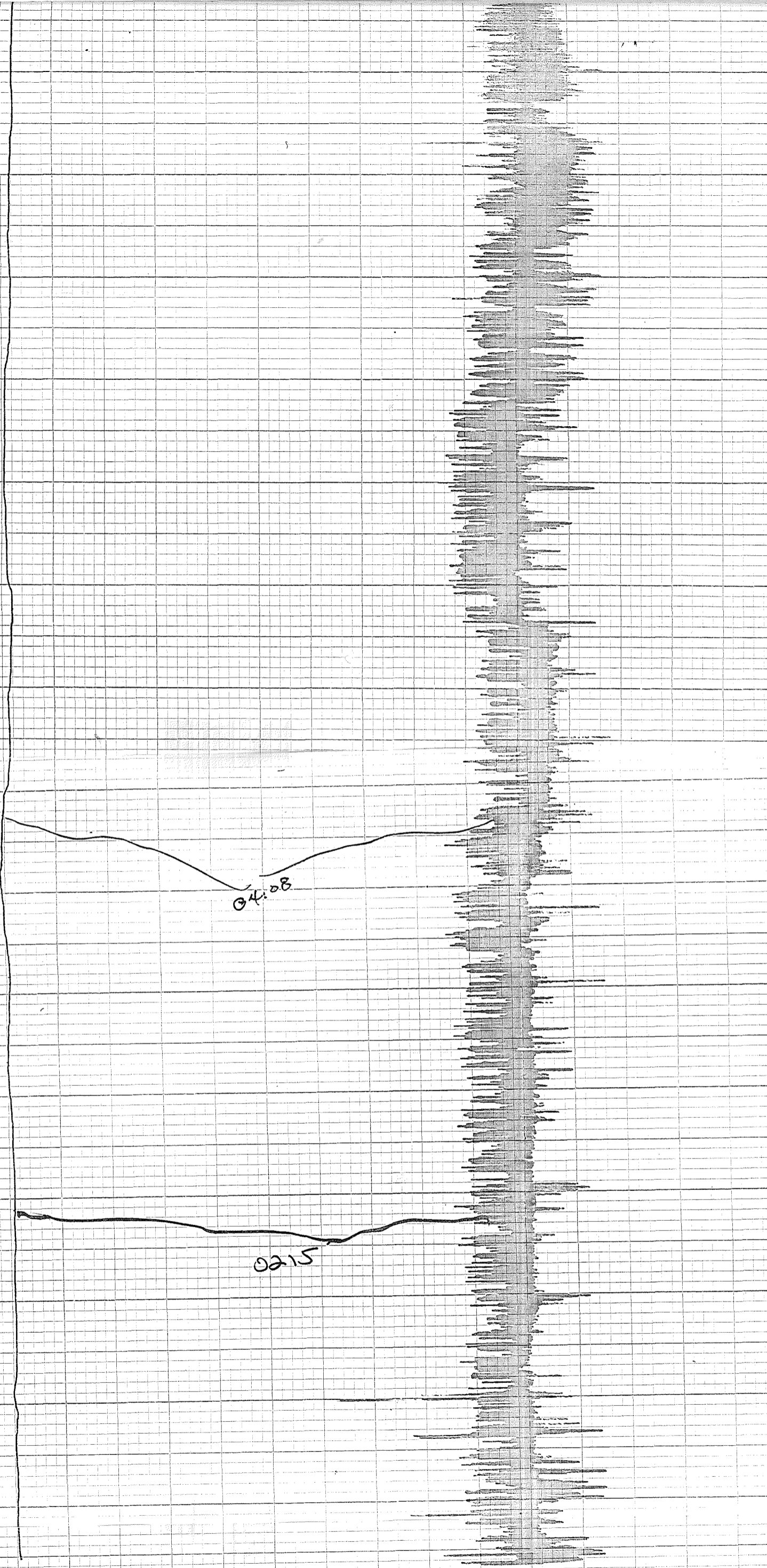
19:04

18:04

16:33  
IF

TI = 107.4 ps  
DPP = 15.5 ps/D





04.08

0215

11-18-82  
2280-5  
200-300 F  
200 GPM  
200 Hz

11-18-82  
RRGP-5  
TEST-5  
Red Temp 200-300°F  
Blue Flow 0-200 GPM  
Chart Speed 2" HR

RRGP-5  
TEST-5

11-17-82  
Chart = 2" HR

Temp  
200-300°F

Flow  
0-200 gpm

23:10

22:01

20:19

19:11

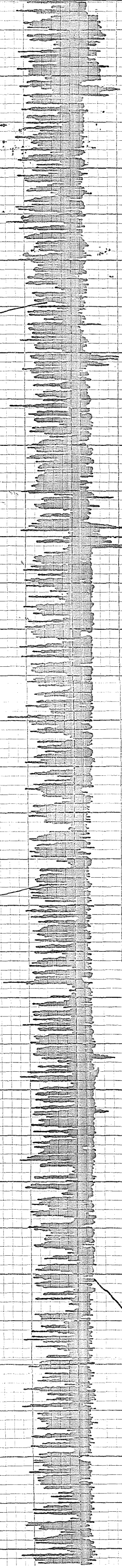
11:51

17:18  
TS

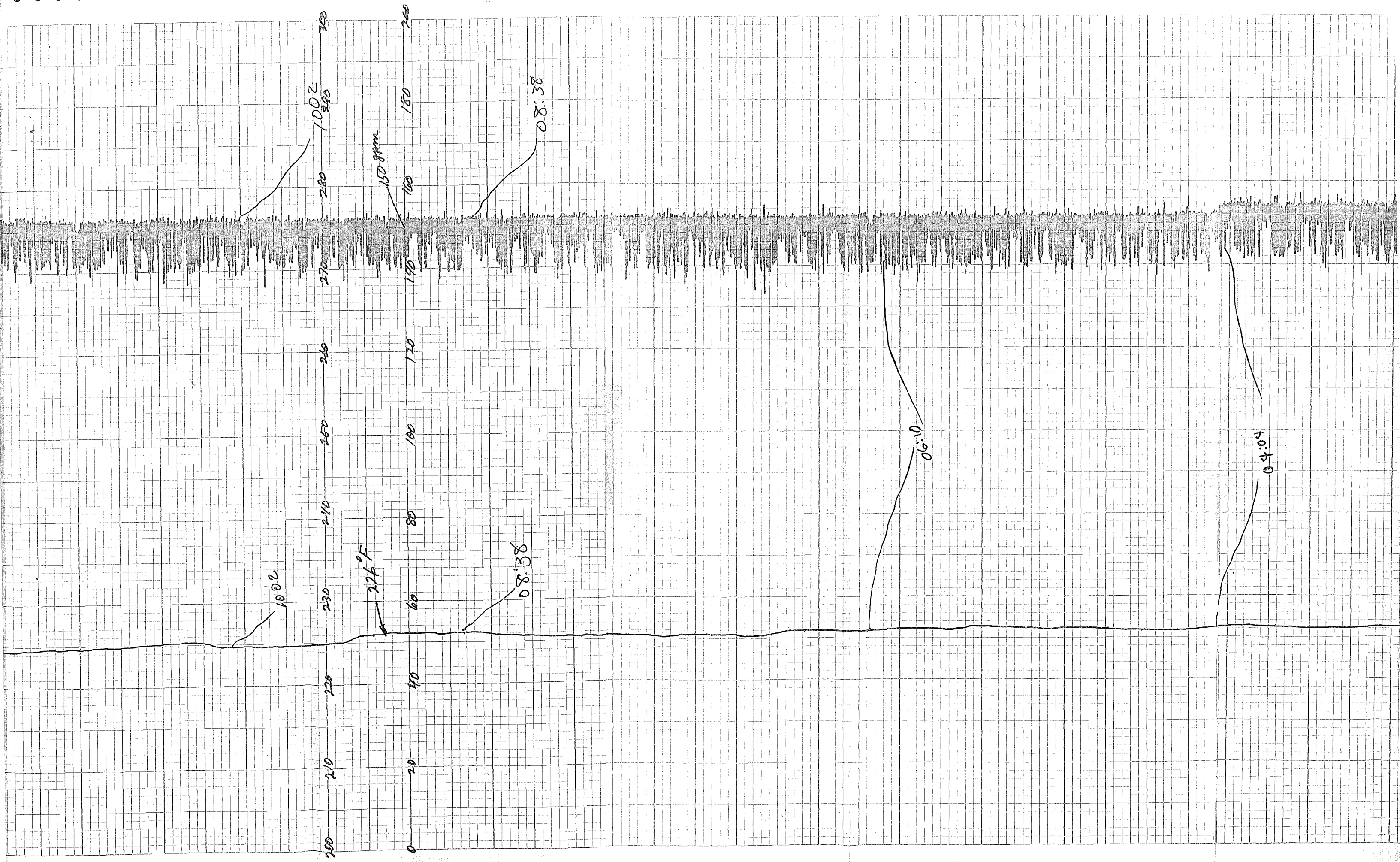
1409

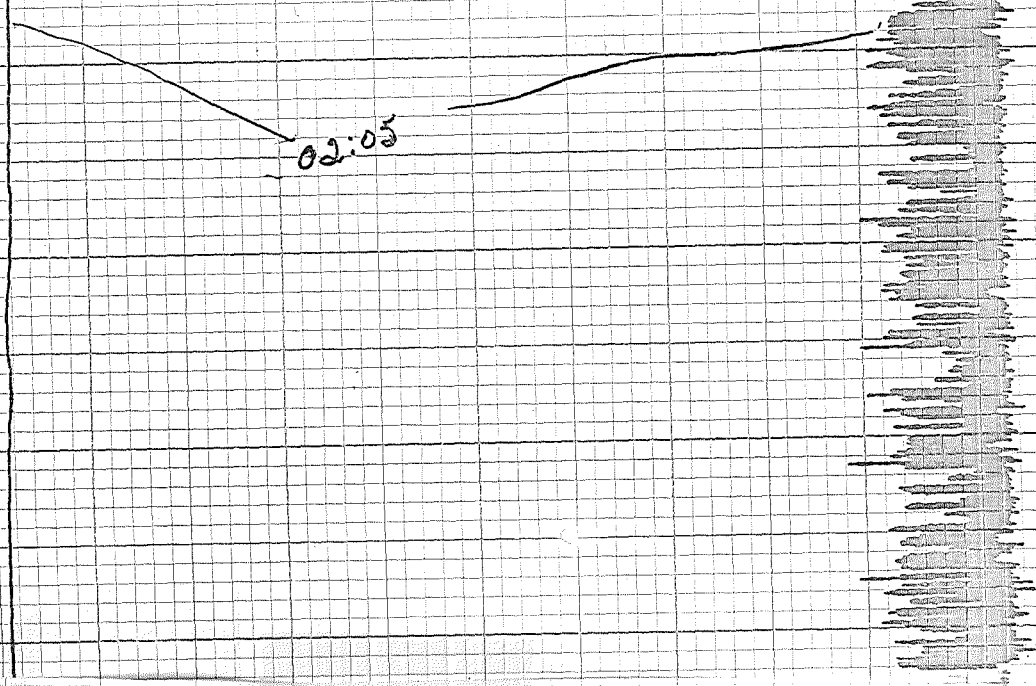
00:21

00:00



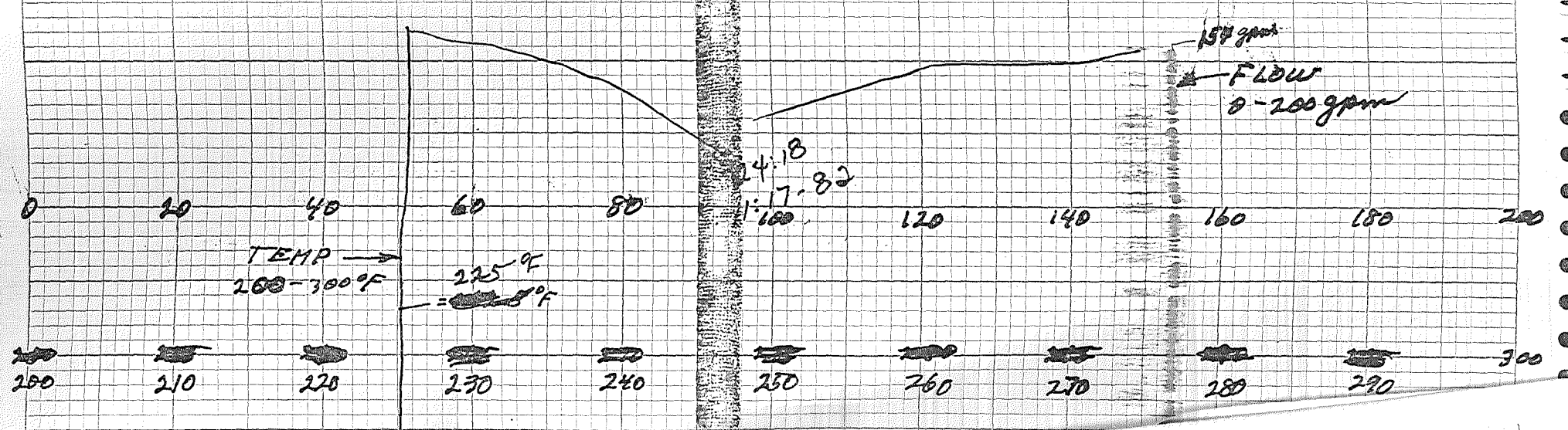
MEMPHIS POLICE DEPARTMENT





11-17-82  
 04:21  
 RRGP-5  
 TEST-5  
 Red - TEMPERATURE 200-300°F  
 Blue - FLOW - 0-200 GPM  
 CHART SPEED 2"/HR

RRGP-5      TEST-5  
 11-16-82      Chart Speed = 2"/hr  
 11-16-82



02:07

22:07

20:02

17:29  
ADJ FLOW  
THRU SAUK-5  
INC FLOW  
APPROX 4.5 GPM

15:05

14:46  
Power  
outage  
we were  
at this



14:46  
Power  
outage  
we were  
notified of this  
but, told it wouldn't  
happen until 15:00  
Dowd back on @ 14:49

1340

1155

out of  
ink.

1006

0920

0820

06:08

03:53

0204

0024  
11-16-82  
RRGR-S  
Red Temp 200-300°F  
Blue Flow 0-300 GPM  
Chart Speed 2" / hr

KP

Sheet of Section  
4 of 5  
11-15-82