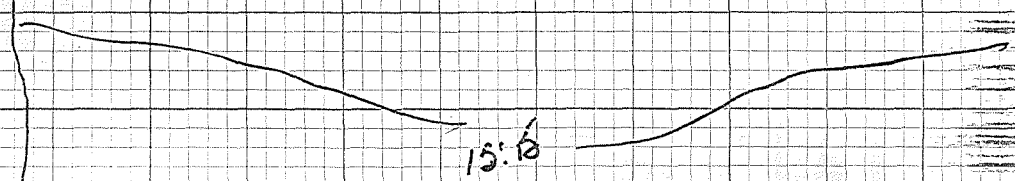
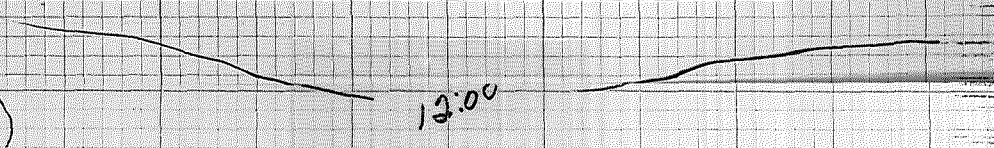
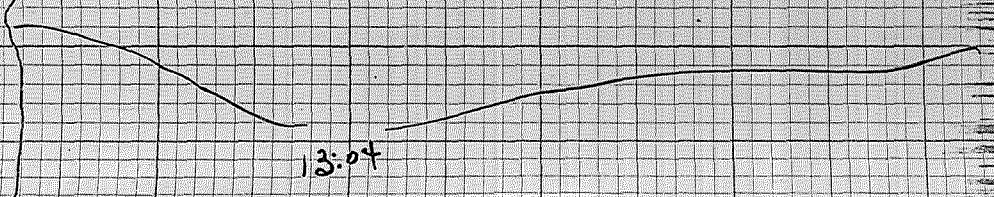
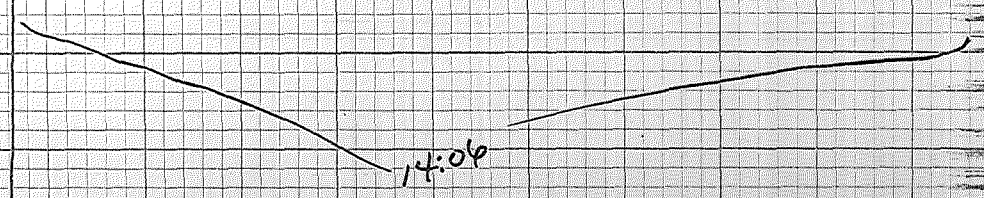


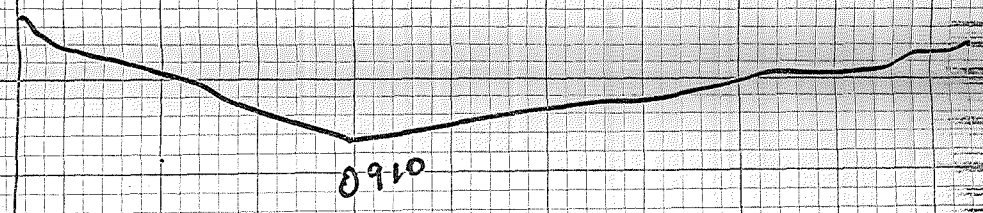
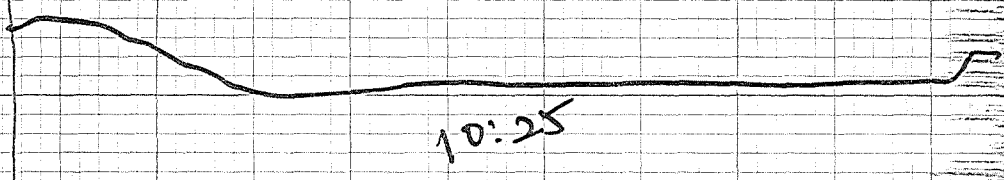
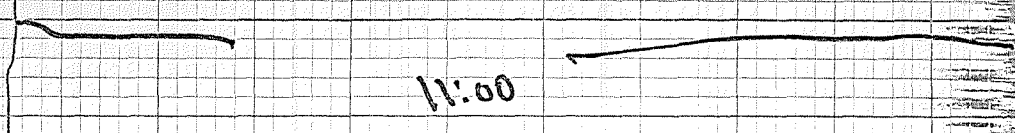
End of Section
1 of 2

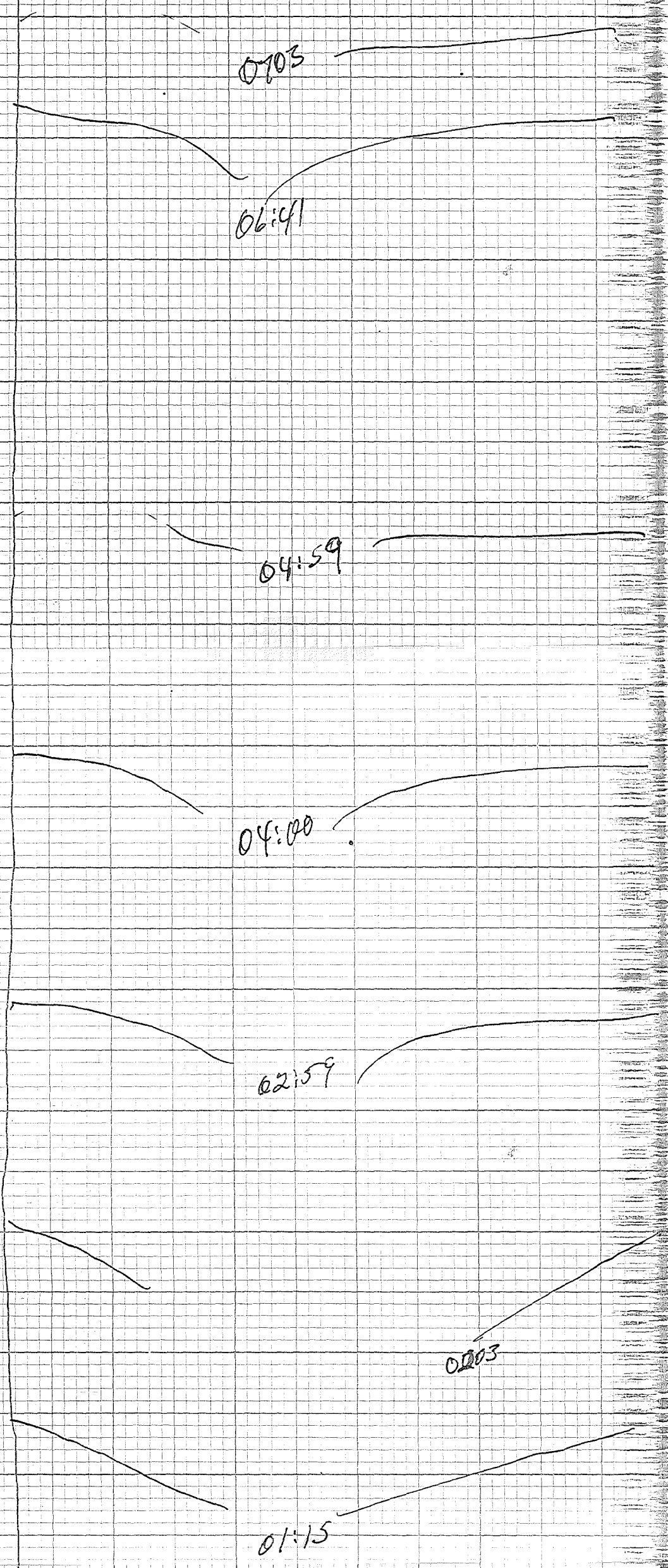


11-9-82



12:01
Adjust SAUG'S
INCREASE FLOW
15.8 (PSD)





RD6P-5
 11-9-82
 TEST #5
 CHART SPD 2" / HR
 REC-TEMP. 200-300°F
 TI = 105.3°C
 BLUE-FLOW 0-200 GPM
 DP = 15.7 PSIG
 LP = 42 PSIG
 HWH = 108.3 PSIG

CHN
RED-TEMP = 10
BLUE-FLOW = 15.7 PSID
DP = 42 PSIG
WWT = 108.3 PSIG

RRP-5
11-8-82

22.55
Temp
200-300 °F
Test 5
11-8-82
Chart speed 2 1/2 in/hr
Flow →
0-200 gpm

2020

19.07

1706

10:26
WSP

1706

10:26
WSP

13:37

14:00

13:00

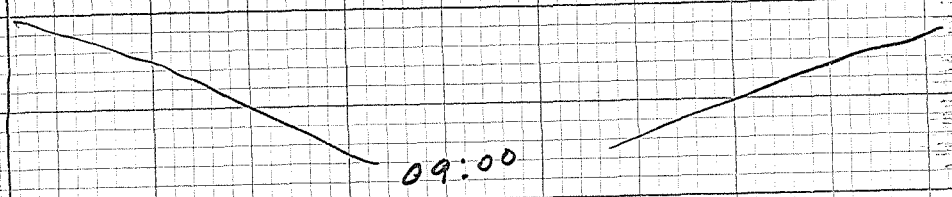
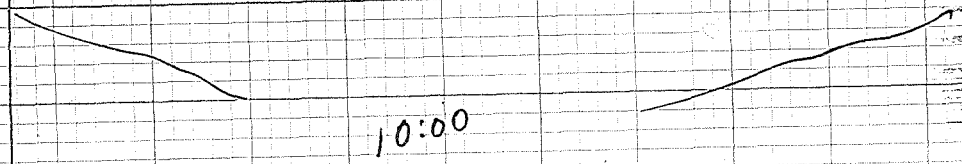
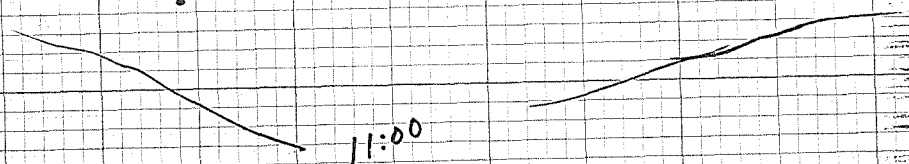
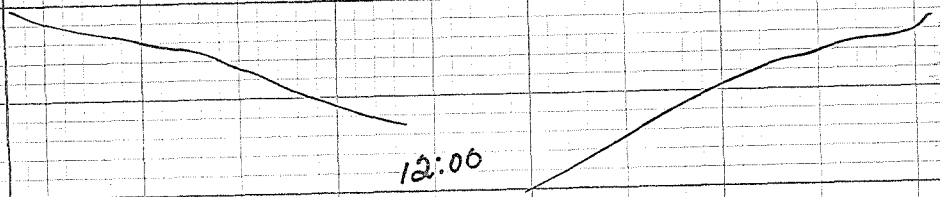
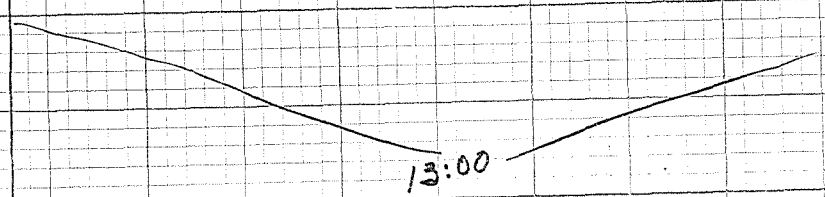
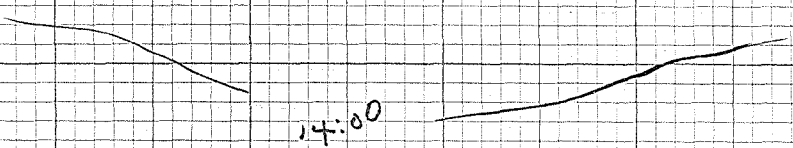
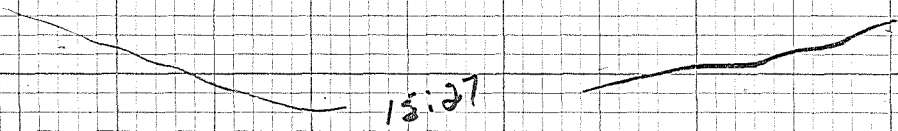
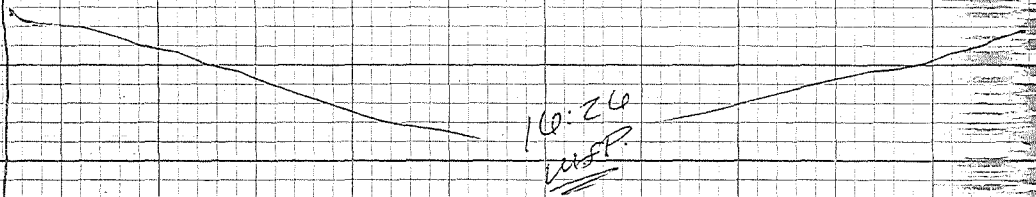
12:06

11:00

10:00

09:00

10:59
INCREASE flow
to 15.8 DELTA-P
S



09:00

08:00

06:58

05:54

04:43

04:00

02:58

02:04

01:02

01:02
RRGP-5
11-8-82
TEST #5
CHART SPD-2"/HR
RED TEMP 200-300°F
T₁ = 106°C
BLUE-FLOW 0-200 GPM
AP = 15.8 PSIG
LD = 43 PSIG
ANN = 108 PSIG
DT

2300

RRGP #5 TEST-5
11-7-82
Temp 200-300°F
chart speed 2"/hr
Flow 0-200 gpm

2200

2100

20:00

2015
5-AUG-5
switched to
manual

20:00

19:00

19:00

18:00

18:00

17:00

17:00

16:00

16:00

15:00

15:00

14:00

14:00

13:00

13:00

12:00

12:00

11:00

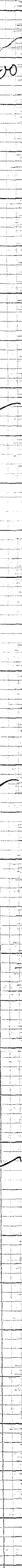
11:00

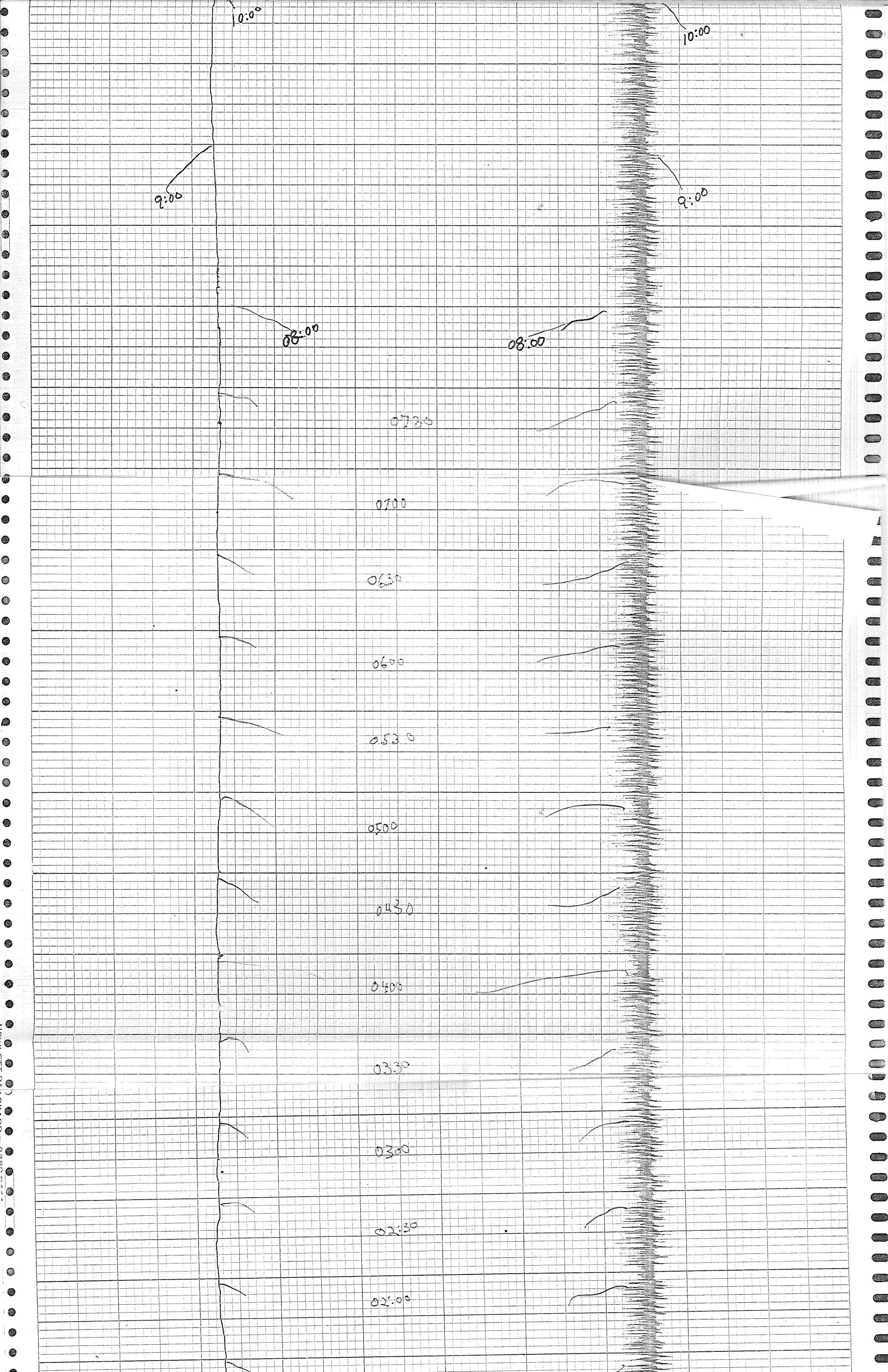
10:00

10:00

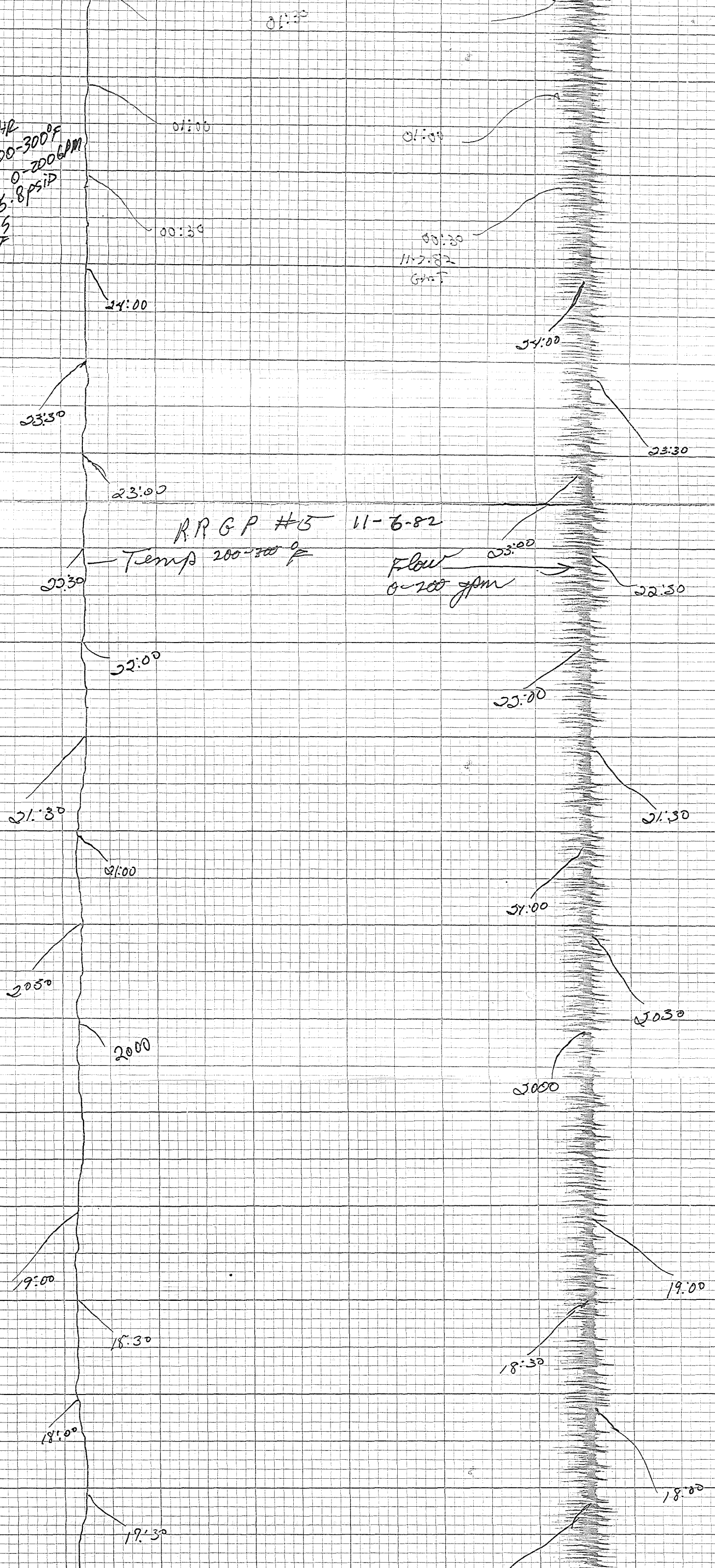
9:00

9:00





RRGP-5
11-7-82
01:14
CHART SPD-2 1/12
RED TEMP-200-300°F
BLUE-FLOW 0-200 GPM
AP-15.8 PSID
TEST #5
Q



00:30
11-7-82
GWT

