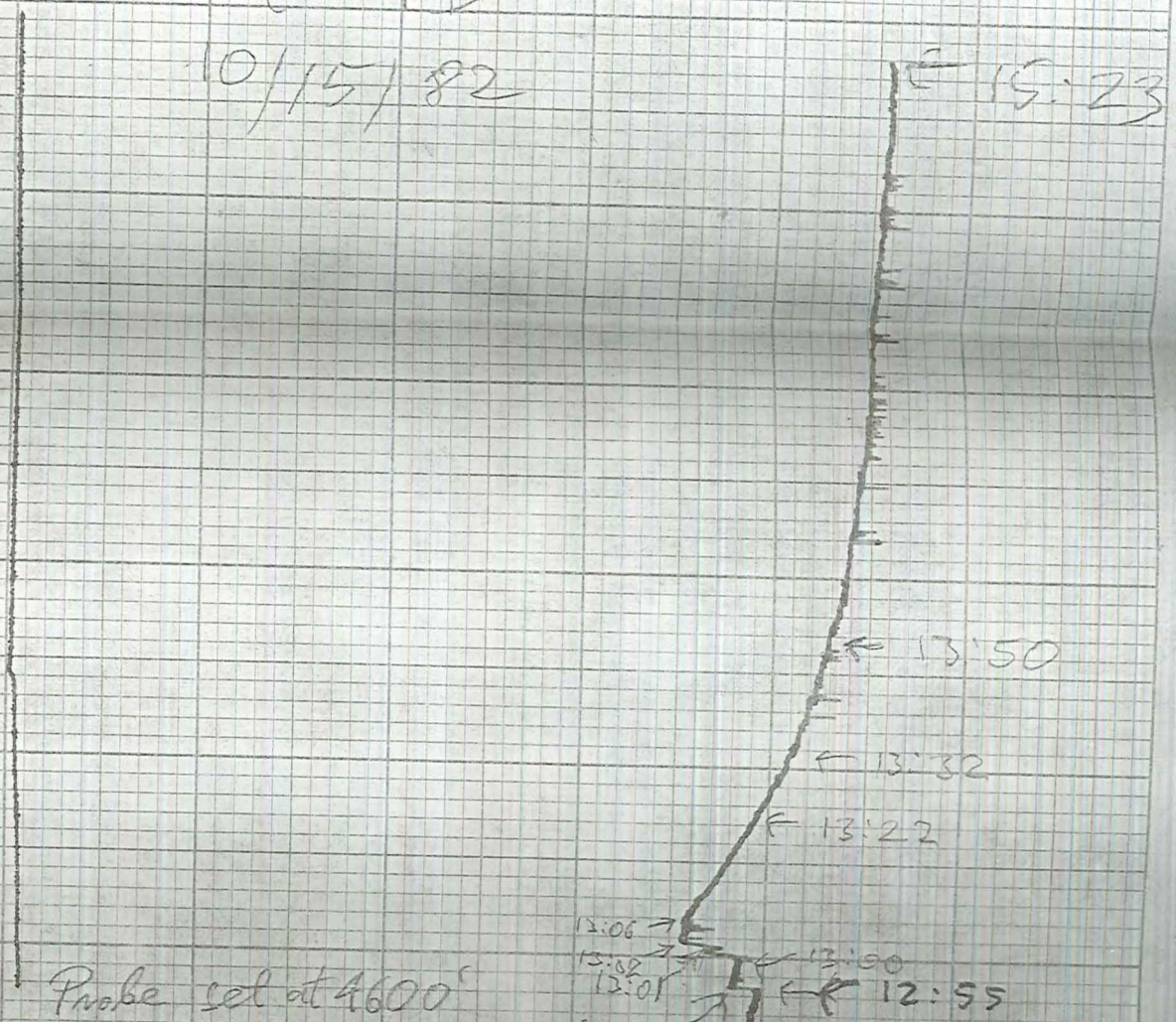


End of Section 2 of 2

RRGP-5 Test 4D

10/15/82



Probe set at 4600'

RRGP-5

Test 4D 10/15/82

Back flow on 13:00

reason unknown I just entered logging track at 4600' 2" / hr

← 1921.5' End of logging up the casing.

← 2000'

← 2100'



2100'

2400'

← 2500'

← 3000'

← due to ~~the~~ moving (slabbing)
around wire?

03.20

← 3200'

← 3500'

← 3900

← 4000

← 4250

speed 35' - 37' / min

← 4500

← 4668

F 4720

F 4740

4839.7

TD

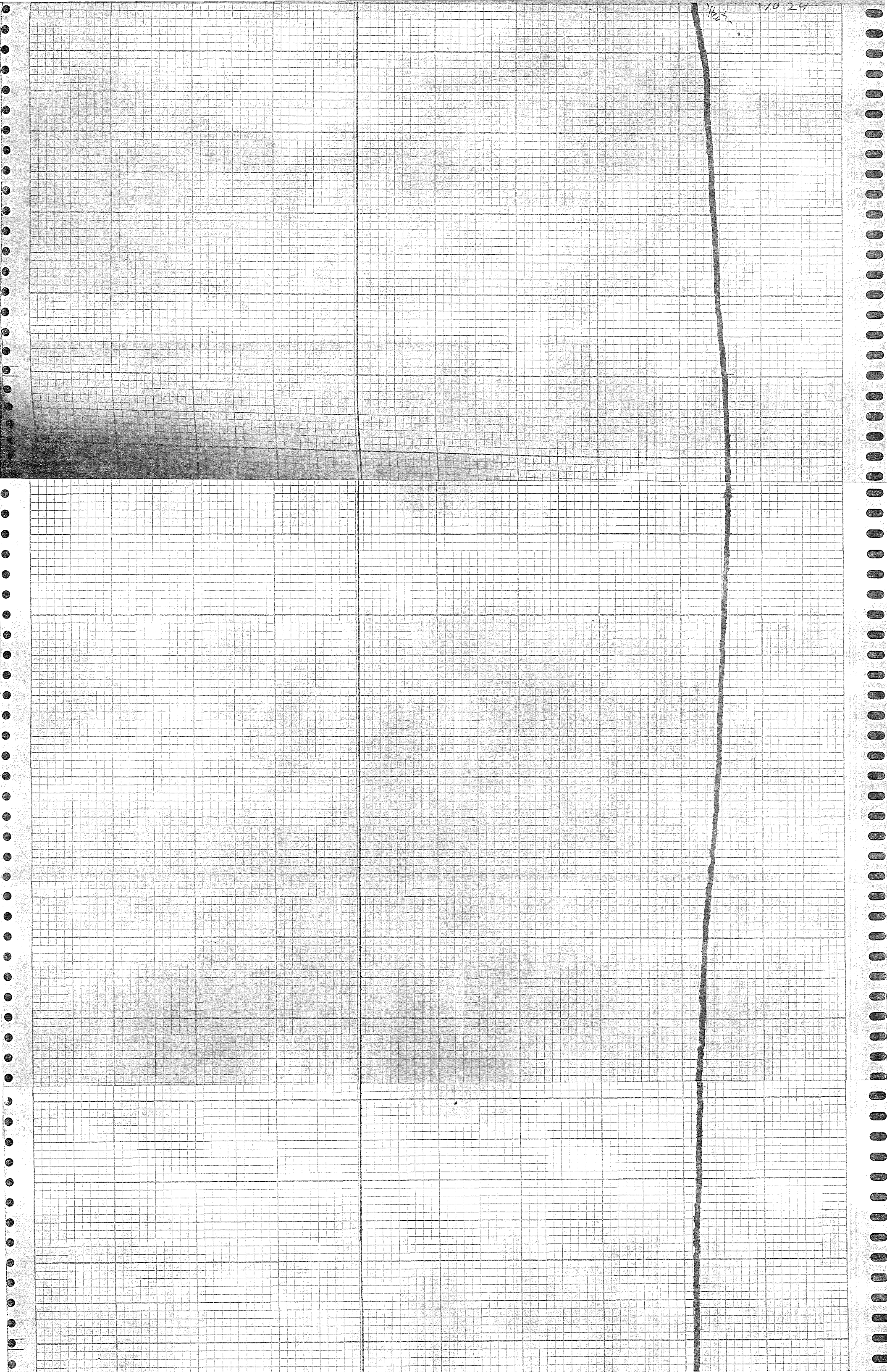
4700

10/15/82

Changed
to depth scale

4600
1096
10-15-82

4500
1024



10-15-82 0040
CHANGED TO TIME SCALE
2"/HR GMT

-4600'

-4700'

-4800'

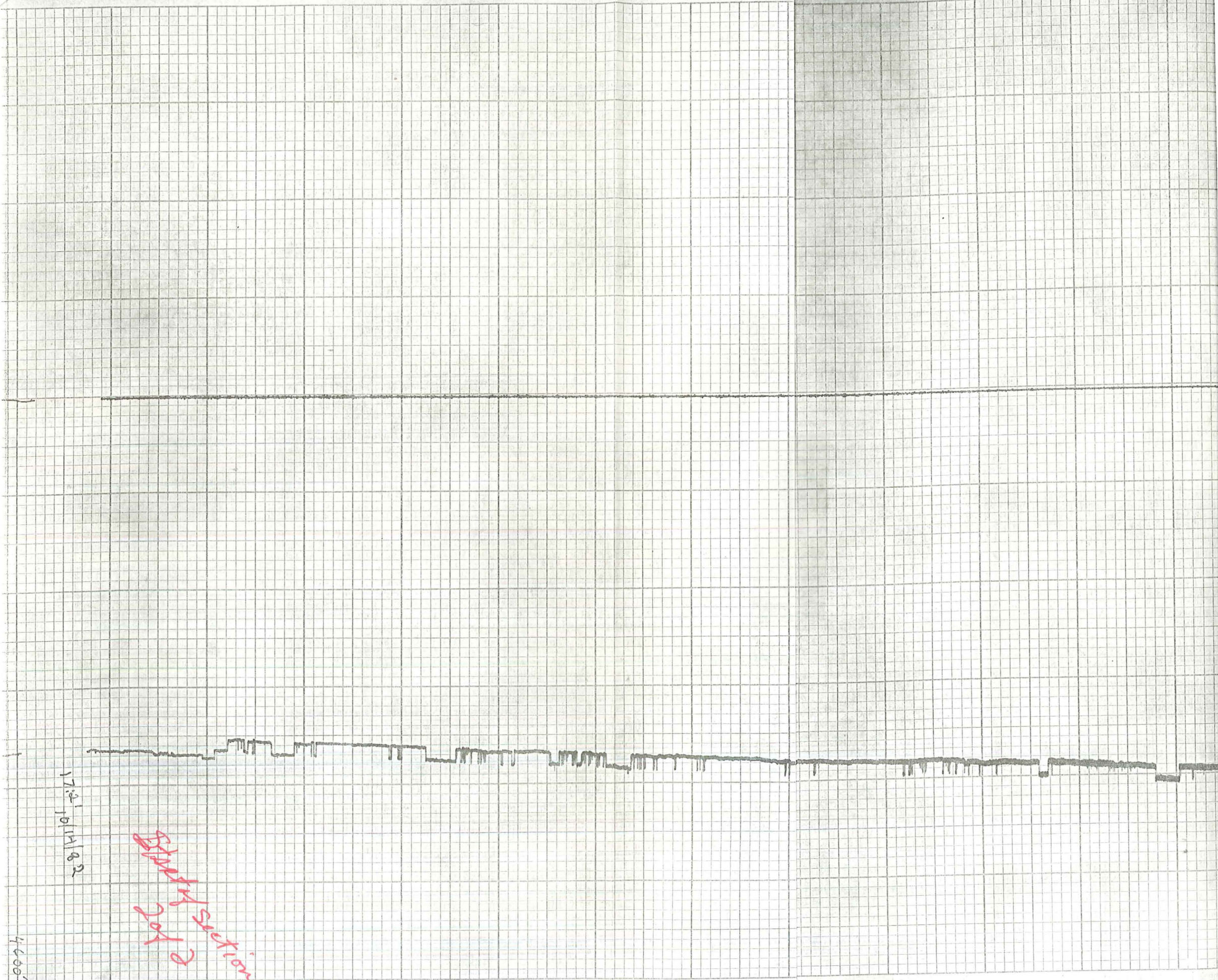
TD 4842'

-4800'

-4700'

10-15-82 0015
CHANGED TO DEPTH SCALE
50'/IN"
RATE FT/PW = 15 GMT

-4600'



17.2' 10/11/82

4000'

e pole section