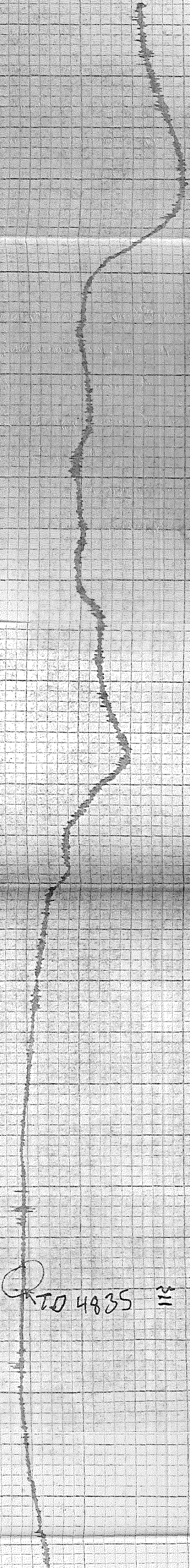


GLD2971-5



4600'

4640'

4680'

4720'

4760'

4800'

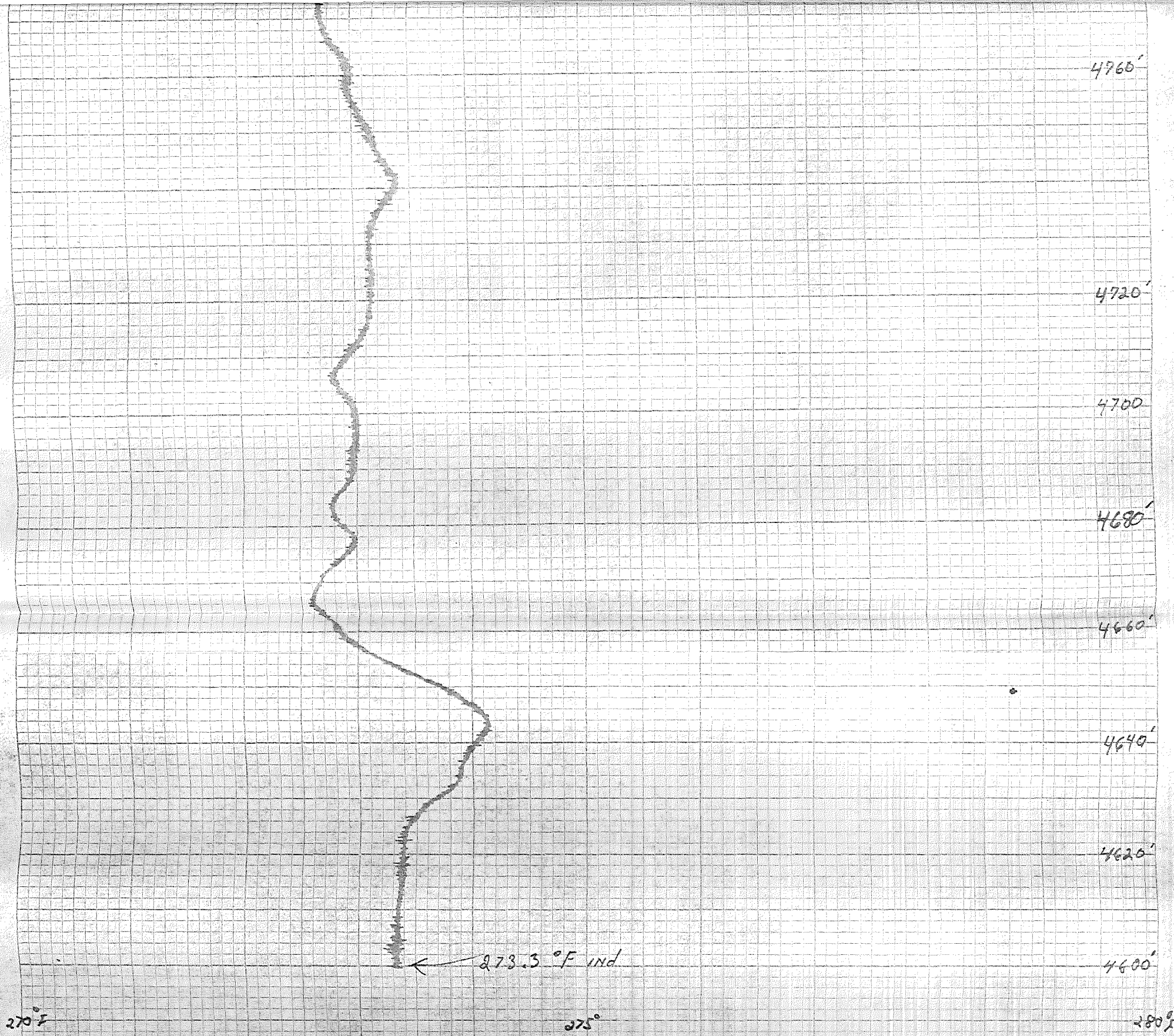
4820'

4840'

4820'

4800'

TO 4835' III



LOG 254
 RTD 250
 LB THER 239.1
 SM " 228

100' INDICATED = 98.46' ACTUAL

TEST 1B PRGF # 5 9-9-82 1040
 6-13

SCALE 270°F - 280°F
 1MV = 1°F

TEMPERATURE LOG
 WELL SHUT IN 1034
 OPEN HOLE

RATE FT/MIN = 25