

2247

2247
TEST 2C COMPLETED

2215

0 10 20 30 40 50 60 70 80 90 100

20:02

19:02

16:19

15:10
cont

100 90 80 70 60 50 40 30 20 10 0

363.58

12:59
cont

12:01
cont

10:50
cont

09:51

08:10
9-27-92
TEST 2C BACKFLOW
BLACK - CONDUCTIVITY
BLUE - PH
GREEN - ORP
CH/SPD @ 2CM @ HR
70 80 90

0700

06:30

0500

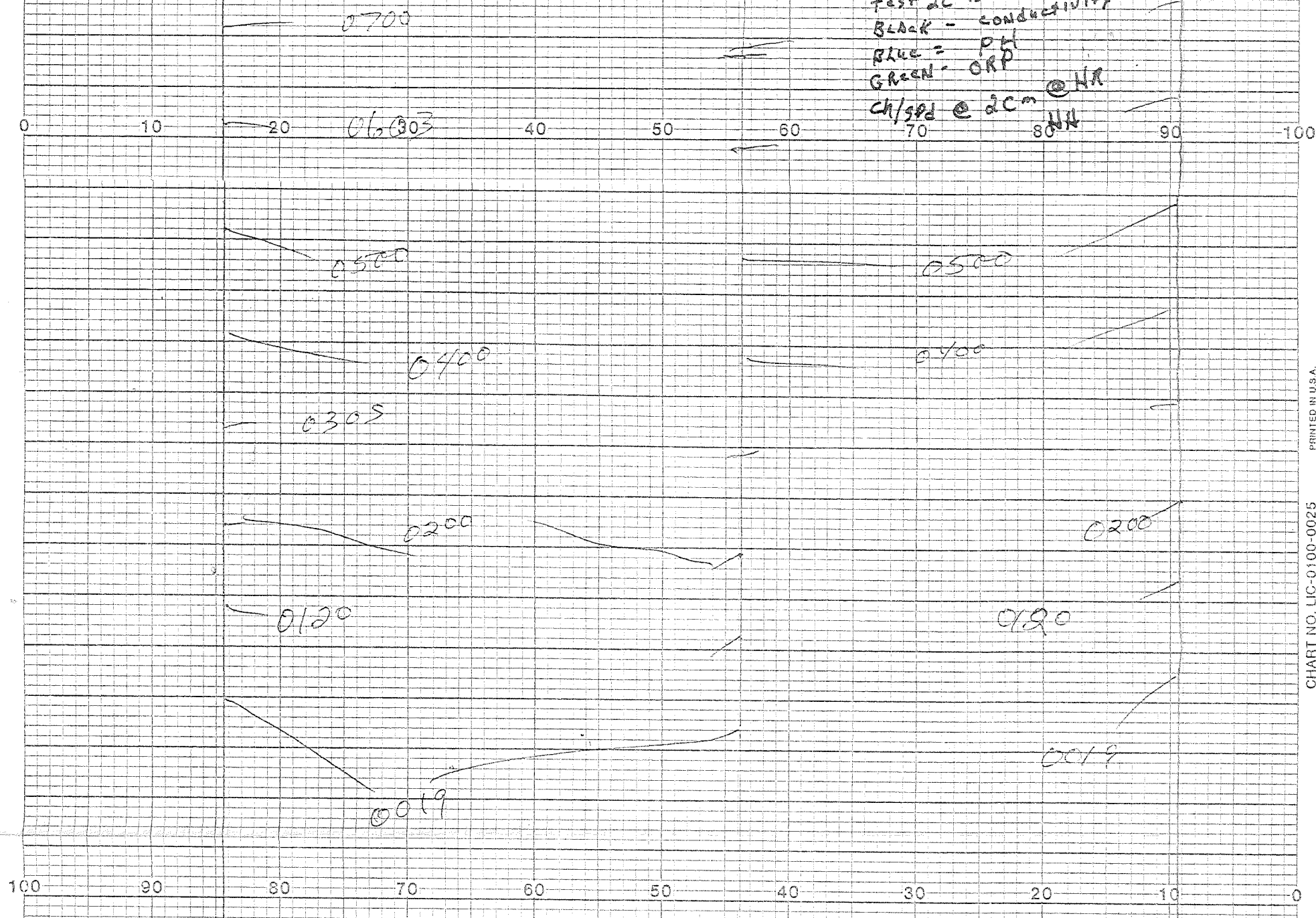
0400

0500

0400

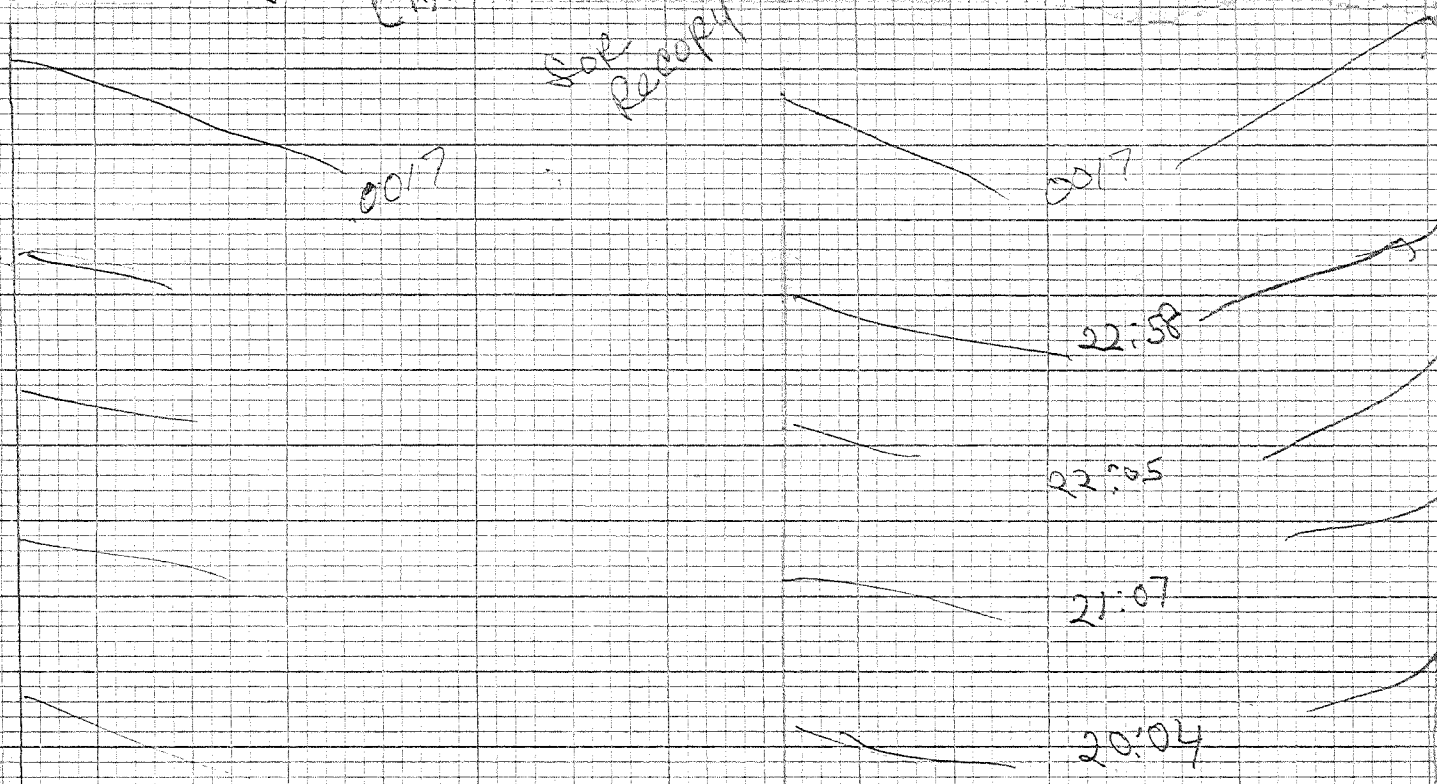
0 10 20 30 40 50 60 70 80 90 100

TEST 2C BACKFLOW
 BLACK - CONDUCTIVITY
 BLUE = PH
 GREEN = ORP
 CH/SPD @ 2cm @ HR
 NH



9/27/82
 TEST - 2C BACKFLOW
 BLACK = CONDUCTIVITY
 BLUE = PH
 GREEN = ORP
 CHART SPEED @ 2cm/hr
 NH

Chart spliced together
 See Receipt



100 90 80 70 60 50 40 30 20 10 0

20:04

19:01

18:02

17:06

16:04

14:57

13:58

13:03

12:05

12:05

11:02

09:54

09:04

09:04

0800

0800

9/26/82

09:10

RRGPIS

TEST 2C BACKFLOW

BLACK COND. TEST

BLUE - P.H.

GREEN - ORP

Charted 2cm per hour

CW2

0659

0659

0610

0610

0405

100 90 80 70 60 50 40 30 20 10 0

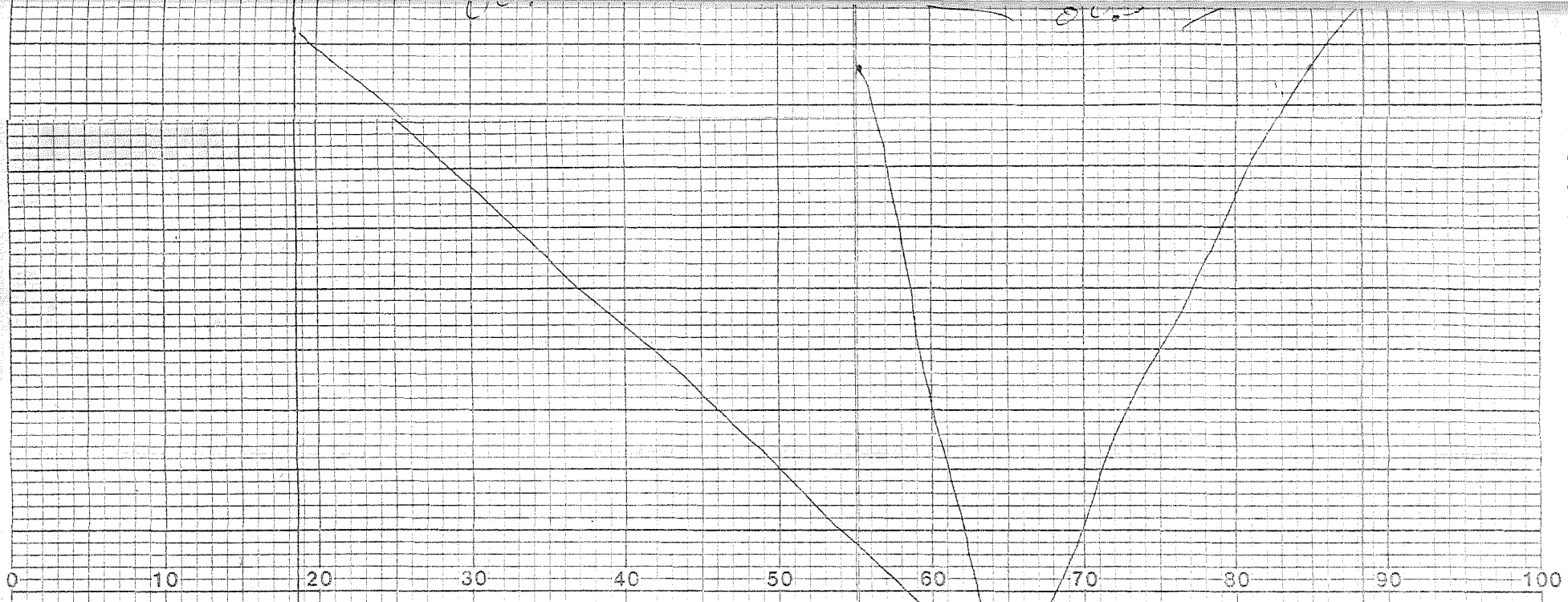
0303

0203

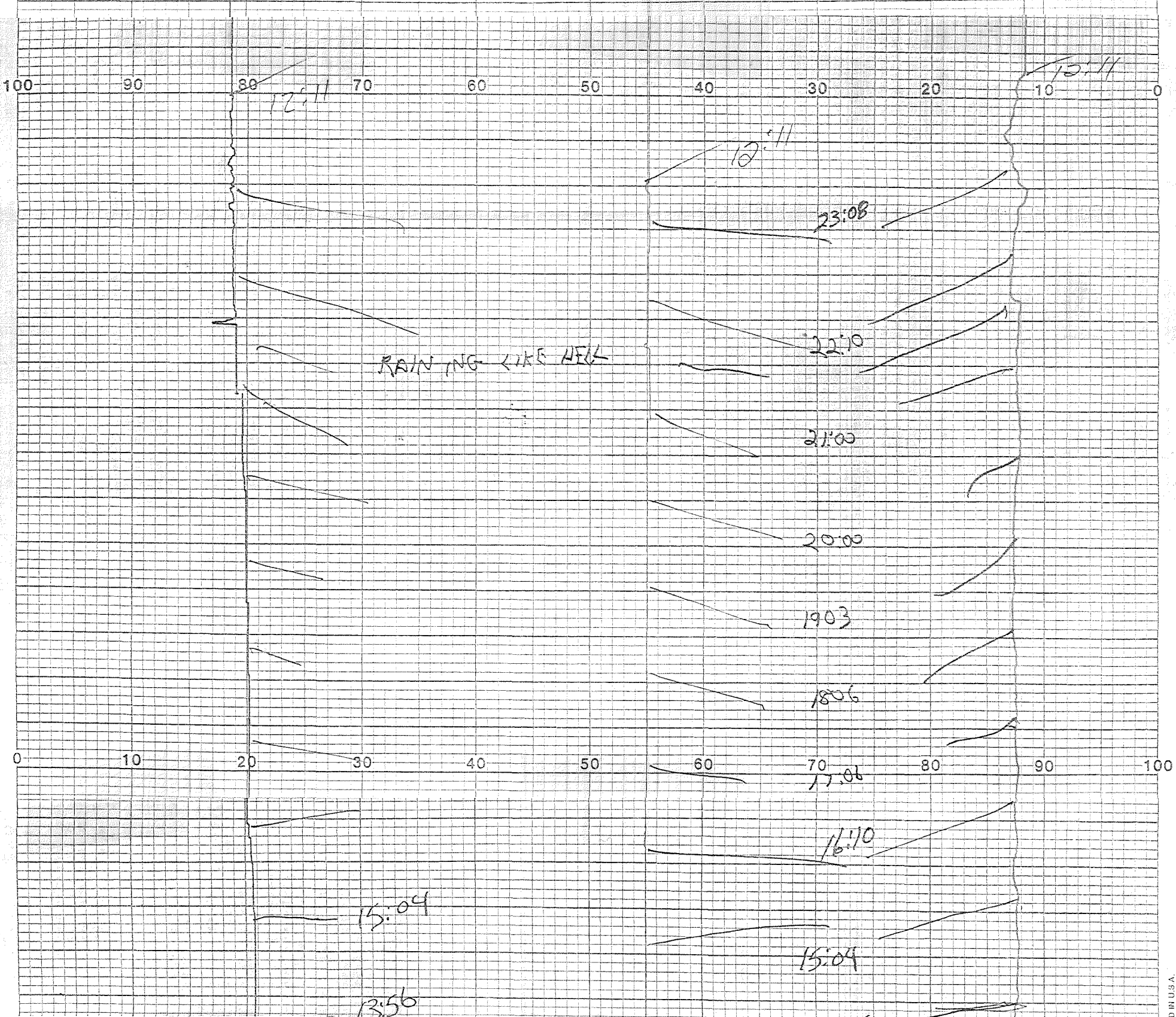
0203

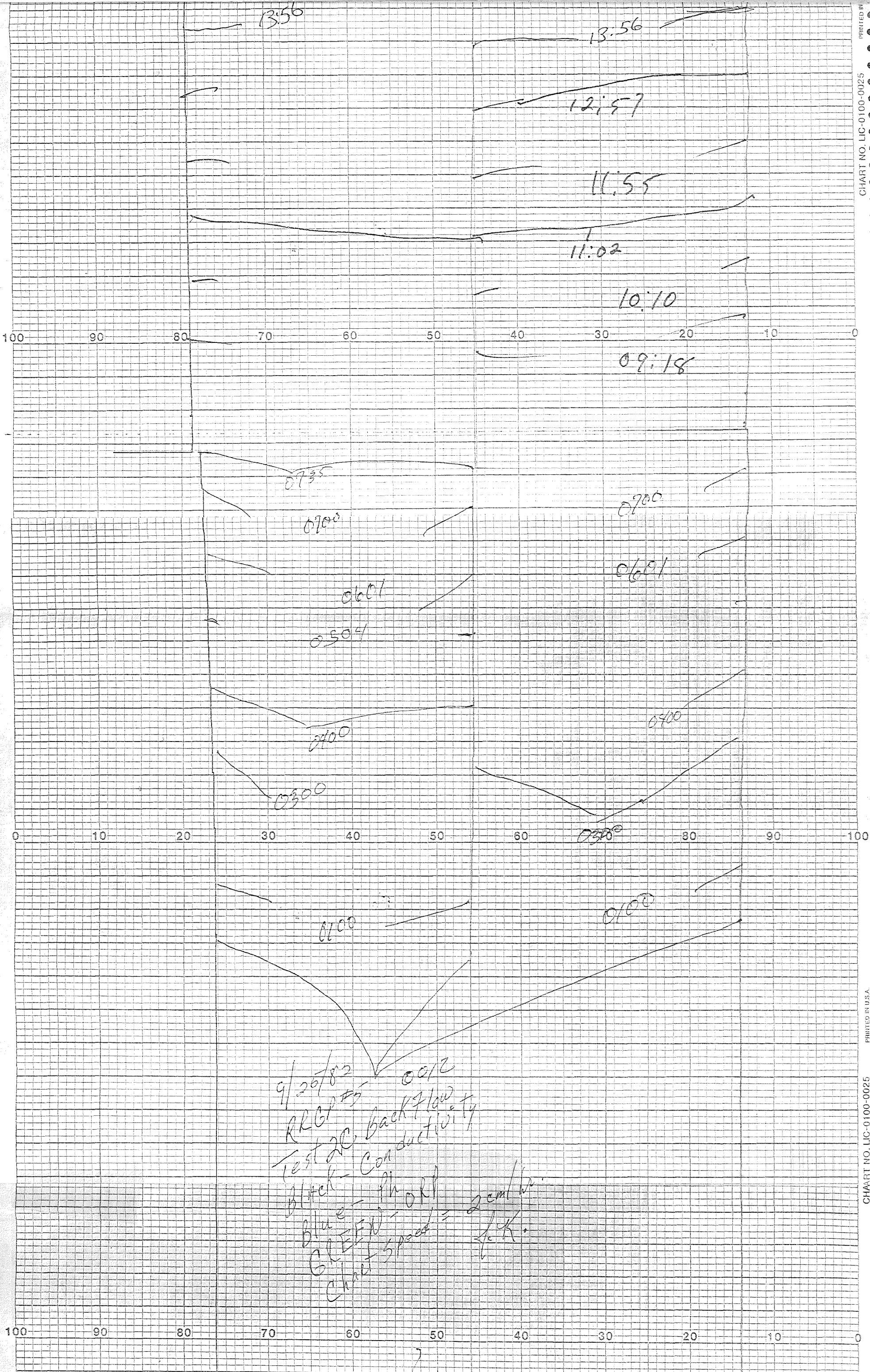
00:56

00:56

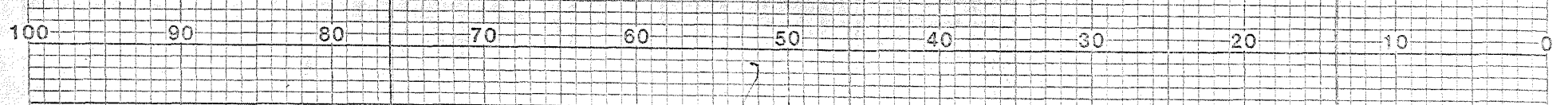


00:14
 9/26/82
 Test - 20 BAC (7/10)
 Black = Conductivity
 Blue = Ph
 Green = ORP
 Chart speed @ 20 cal/hr.
 J.K.

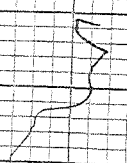




9/26/82
 RRCP #5
 Test 2C backflow
 black - conductivity
 blue - ph
 GL EFW - ORP
 chart speed = 2cm/hr
 1/2 K.



100 90 80 70 60 50 40 30 20 10 0



00:09

0 10 20 30 40 50 60 70 80 90 100

22:13

21:00

18:03

16:20

100 90 80 70 60 50 40 30 20 10 0

14:07

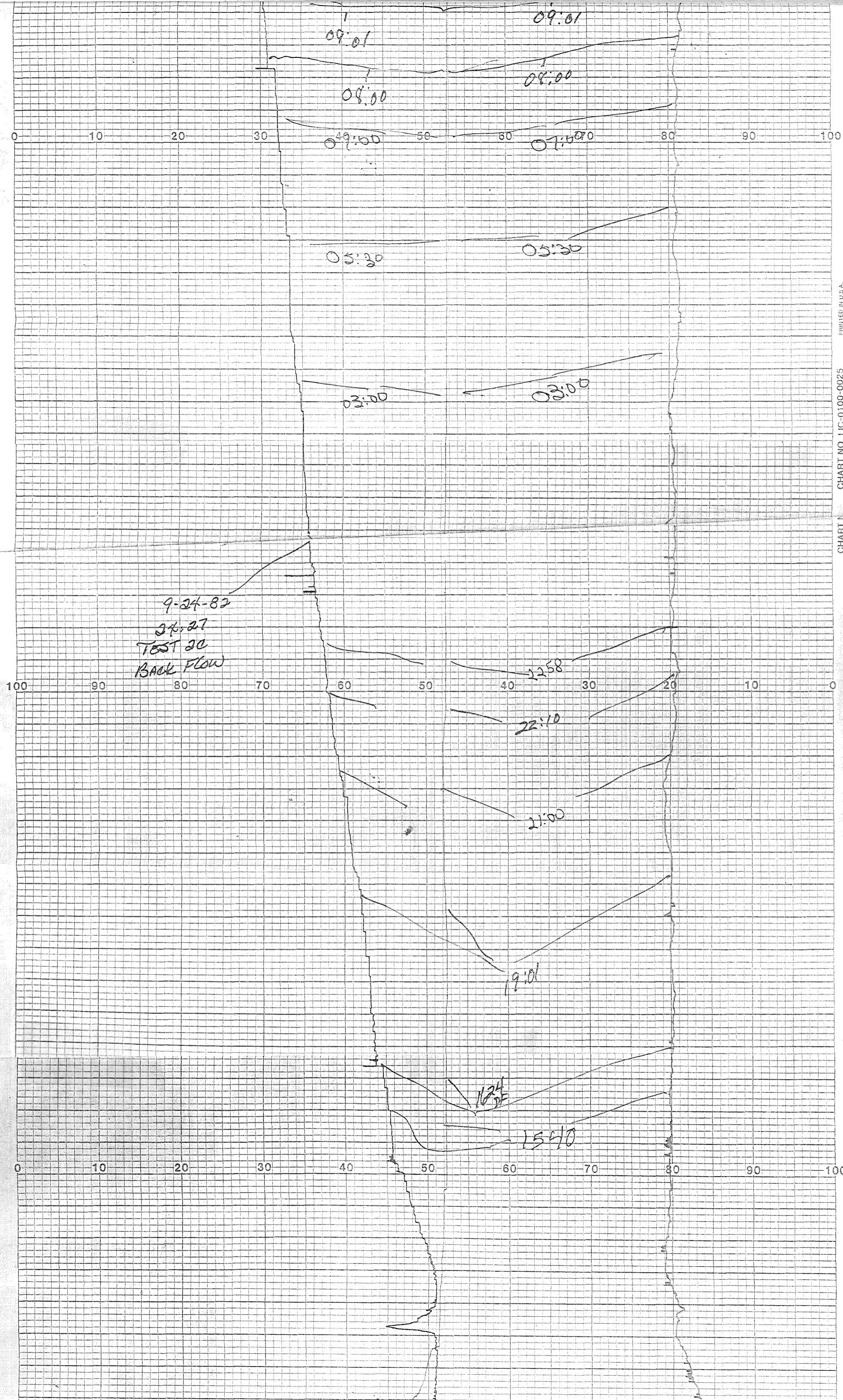
13:10

12:01

11:09

10:30

09:01



9-24-82
27.27
TEST 20
BACK FLOW

09:01

09:01

08:00

08:00

07:00

07:00

05:30

05:30

03:00

03:00

22:58

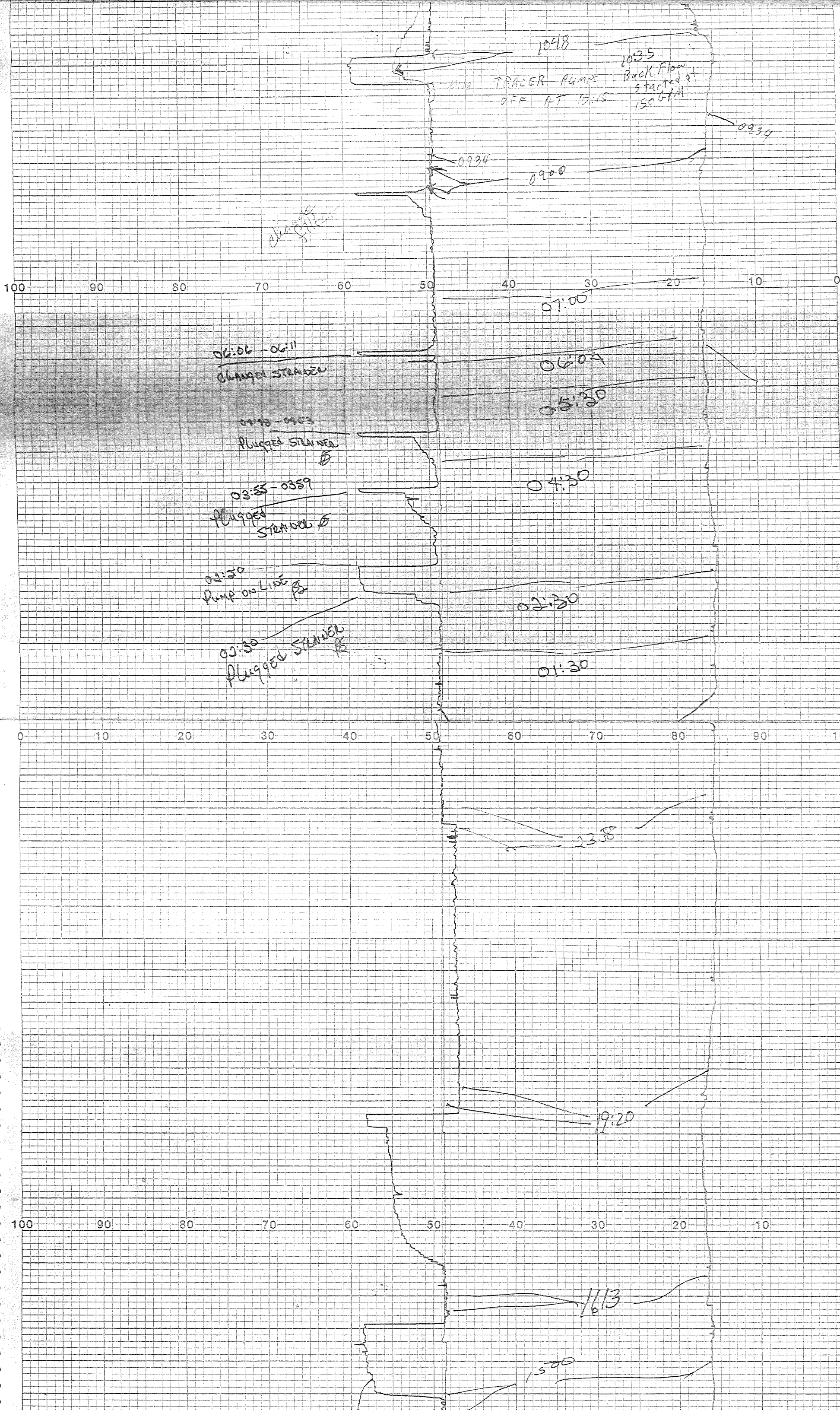
22:10

21:00

19:01

16:24

15:40



1400

1230

0900

07:30

0600

0530

0430

0230

0203

0130 0130

0100

0100

0032

0032

2330

2330

23:06

2207

21:02

20:00

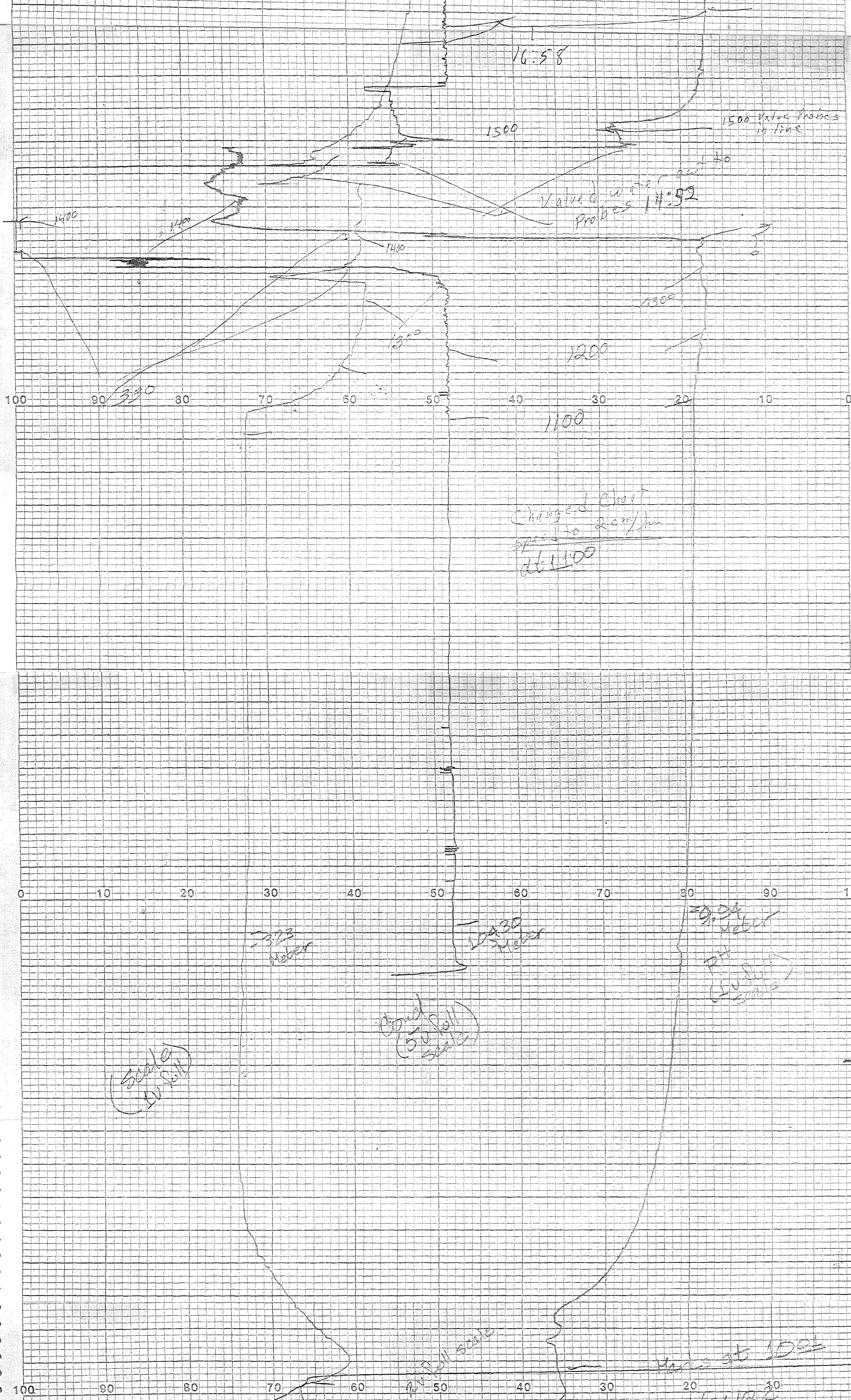
19:00

18:00

0 10 20 30 40 50 60 70 80 90 100

100 90 80 70 60 50 40 30 20 10 0

0 10 20 30 40 50 60 70 80 90 100



Changed chart speed to 2 cm/hr at 11:00

1500 Valve Probes in line

Valved water out to Probes 14:52

Scale (50 fall)

Cond (50 fall scale)

PH (50 fall scale)

ends at 10:01

01/11/52

