

0022  
 9-28-82  
 RRFPTS  
 Test 2C complete  
 Blue Flow 0-250 GPM  
 Red Temp 250-300°F  
 ch up = 2 1/4  
 LL

TEST TERMINATED  
 22:47  
 9-27-82  
 20-25 GPM  
 BACKFLOW ESTABLISHED

22:15

2002

19:02

17:12

17:12

16:19

INC. FLOW  
@ B. Downs  
Request  
15:10  
cut

14:00  
cut

12:59  
cut

12:01  
cut

10:50  
cut

went to MANUAL  
mode Red shut  
Power off @ 10:00 hrs

08:57

08:10  
9-27-82  
RRG #5  
TCST #2C BACKFLOW  
Red - TEMP 200-300°F  
Blue - FLOW 0-250 GPM  
ch/ld 2" @ HR  
HH

ANNULUS PSIC 97.7  
Temp 122.7°C  
ΔP 7.6

0700

0603

0500

0400

0305

0200

0130

9-27-82  
RRG#5

Test 2C Backflow

00:20  
Blue Flow 0-250 GPM  
Red Temp - 200-300 °F

Temp. ch. sp = 2"/hr  
LS

0018  
RRG#5

9-27-82

Test 2C Backflow

Red Temp 200-300 °F  
Blue Flow 0-250 GPM

Temp. ch. sp = 2"/hr  
LS

22:58

22:05

21:07

20:04

RR10P-5  
9-26-82  
FLOW TECT 20. BACK FLUSH  
TO POND #7  
CHART SPD-2" / HR  
RED-TEMP. 200-300°F  
BLUE-FLOW 0-300 GPM  
DP=76.2 PSID  
DR

19:01

20:07

18:02

1738

17:06

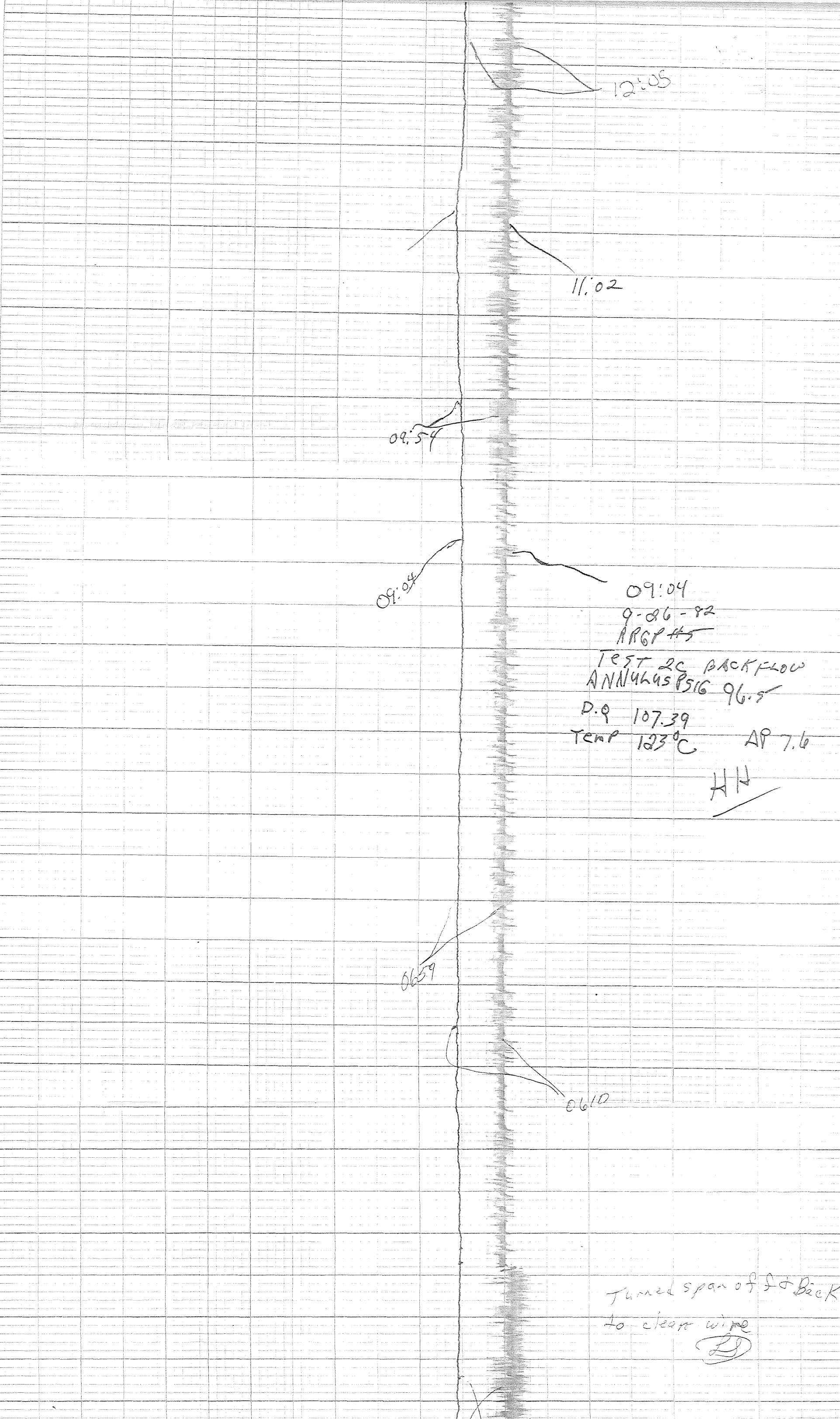
16:04

14:57

13:58

13:03

12:05



12:05

11:02

09:54

09:04

09:04  
9-26-82  
RRGP #5

TEST 2C BACKFLOW  
ANN 4645 PSIG 96.5

D.Q 107.39  
TEMP 123°C AP 7.6

HN

06:59

06:10

Turned span of I & Back  
to clear wire  
L

To clean wire  
LL

0405

0303

02:03

00:56

12:13  
9-26-82  
RRG PMS  
Test 2C Back Flow  
Blue Flow 0-250 GPM  
Red Temp 200-300°F  
Temp. = 2"/hr.  
LL

12:12

9-26-82  
12:12  
RRG PMS  
2C-Back Flow  
Blue Flow 0-250 GPM  
Red Temp 200-300°F  
Temp. = 2"/hr.

23:08

RAWING

23:08

22:10

21:00

20:00

19:03

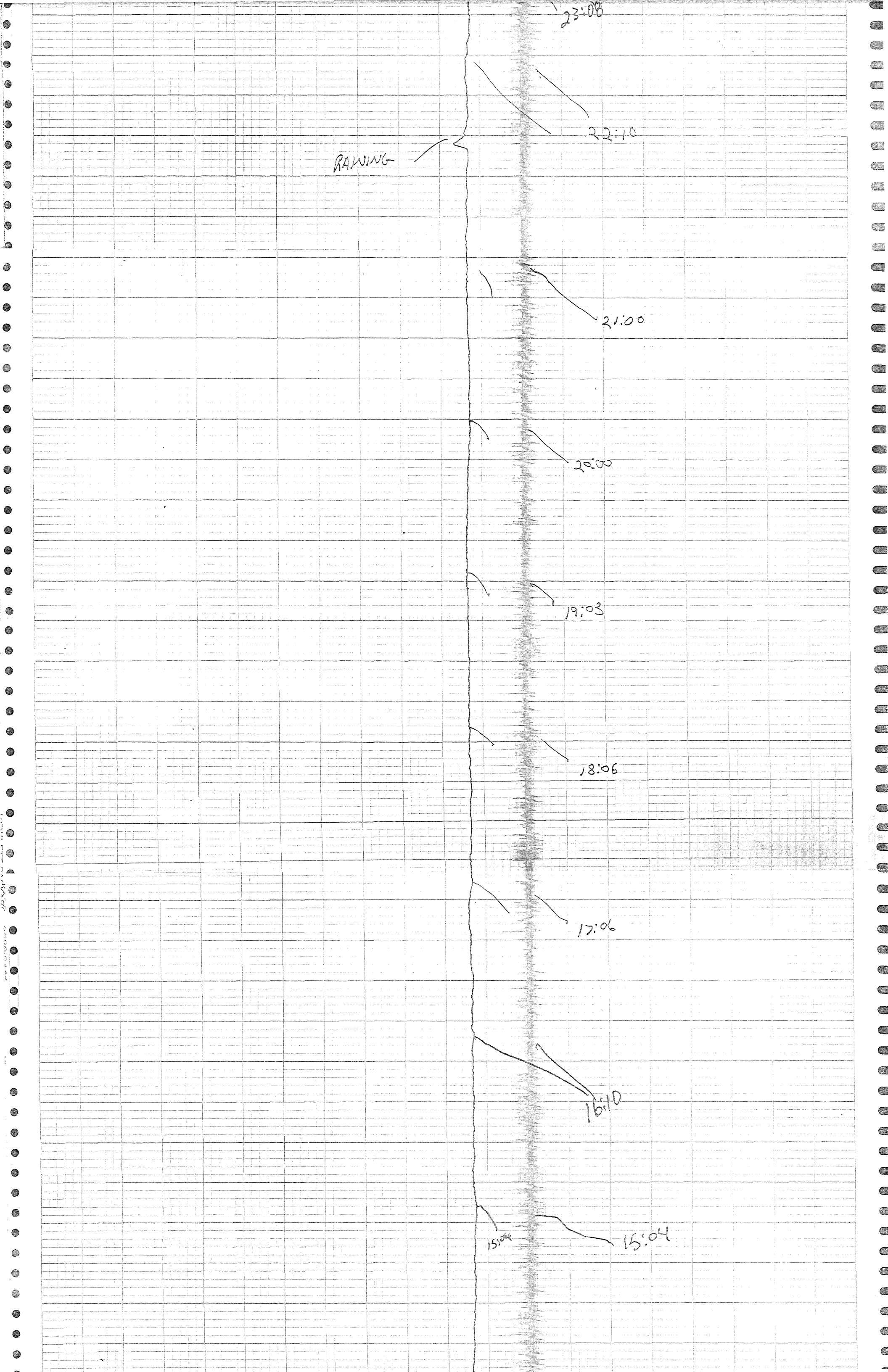
18:06

17:06

16:10

15:04

15:04





13:56

12:57

11:55

11:02

10:10

09:18

MISSED  
08:00 readings  
Due to Power  
Drop & reset  
of instruments

HH

07:35  
Power Dip

07:00

06:01

Start of  
Section 2  
of 2