

6102971-57

End of Section 1 of 2

0504

0400

0300

0200

BT

120.4°C

0100
93.2 PSI
Haul/45

1209

RRG #5

9-25-82

Test 2-C

Red Temp

Blue Flow

dr up = 2"/hr

LS

Back Flow
200-300 CF
0-250 GPM

1209

23:20

22:13

21:00
ANNULUS PRESS.
DROPPED 92.3 TO 91 PSIG
IN LAST HOUR

18:03

16:20

15:05

15:05

14:07

13:20

12:01

ANNULUS PSIG
DROPPED FROM 90 PSIG
TO 88.5 PSIG

11:09

10:00

09:30

08:00

07:00

07:00

06:03

05:00

04:01

03:00

02:00

01:00

01:00

150 GPM

ANNULUS - 87.5 PSIA
DELTA-P - 7.5 PSID
LINE TEMP - 106.0°C

0 1/2 ° F

9-27-82
24:11
RROP-5
TEST OC BACKFLOW
Red - TEMPERATURE - 200° - 300°F
Blue - FLOW - 0 - 250 GPM
VALVE SIZED 2" / HR

24:11
RRCP-5
TEST 2C BACK FLOW
Red - TEMPERATURE - 200° - 300°F
Blue - FLOW - 0 - 250 BPM
CHART Speed 2°/HR
YB

9-24-82
24:10
RRCP-5
TEST 2C
BACK FLOW

ANNULUS - 84.5 PSIG
DELTA-P - 7.5 PSID
LINE TEMP - 106.00

24:04
9/24/82

24:04
9/24/82

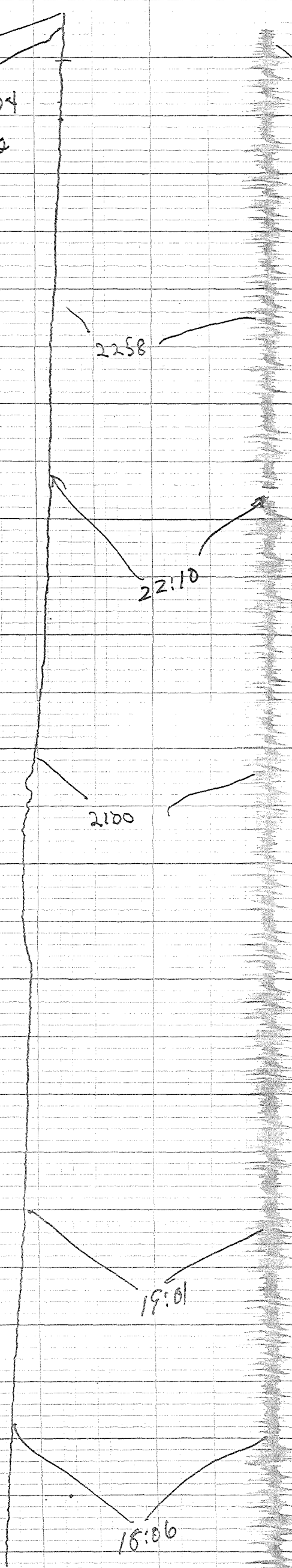
2258

22:10

2100

19:01

16:06



16:06

17:15

1624
58

15:40

Valving of #7
+ 5V
Backflow - all going to
#7

12:20

12:00

11:30

Making valve adj.
for prep. sending water
(Backflow) to #7

10:55-28

Backflow - 150 GPM
started

23-82

R R G P # 5

Test 2-c

Backflow

10:35

21:55
#5 P.I.P. OFF

17:33
Chart OFF

17:08
SAV6 closed

16:13
BEGAN TRANSFER flow
CONTROL FROM SAV6 TO SV9

15:54
THROTTLE BACK ON
SV14

16:00
INCREASE
flow

15:02
INCREASE flow

15:32
THROTTLE BACK
ON SV14

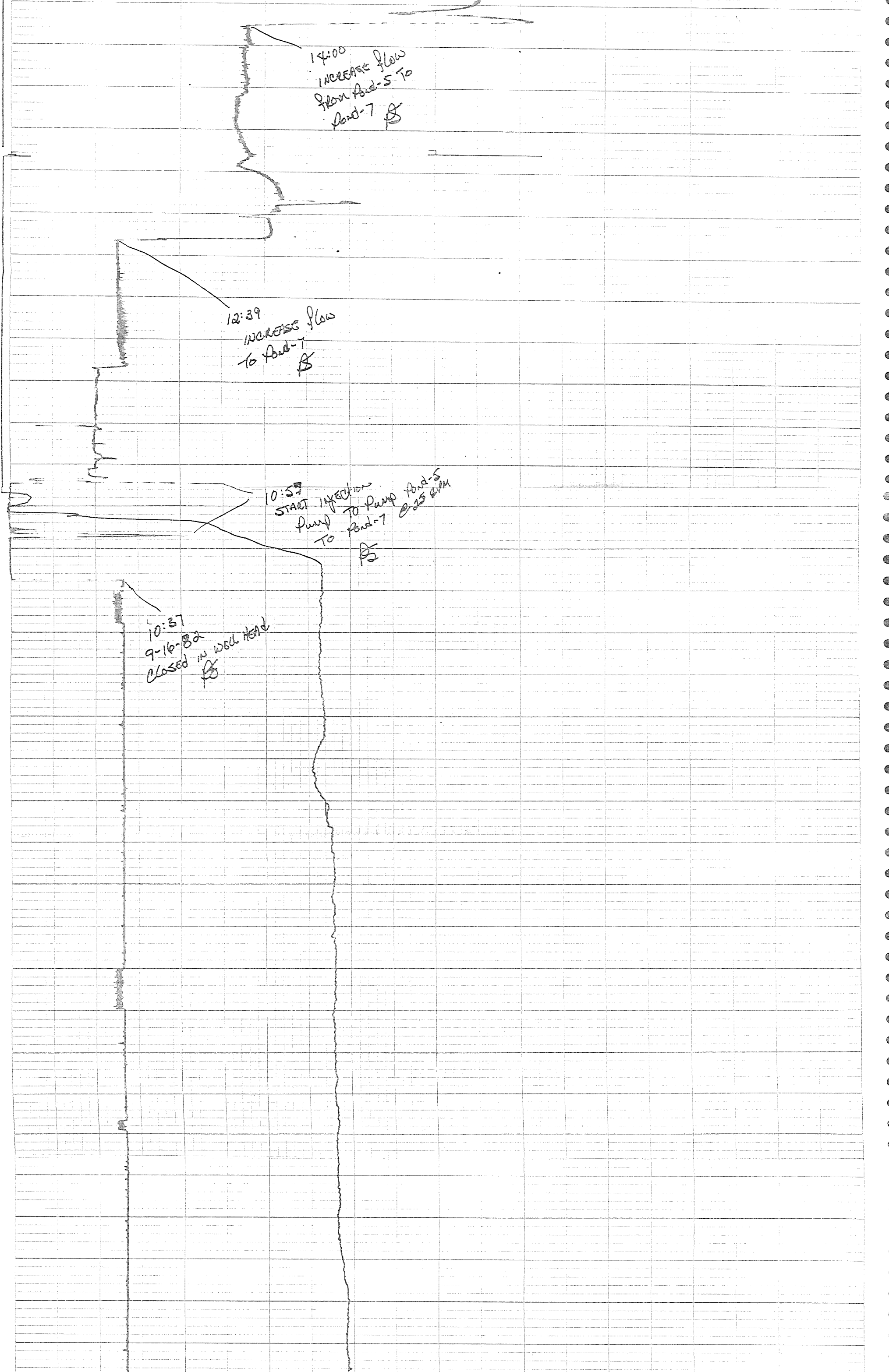
14:53
CLOSED DOWN ON
SV14

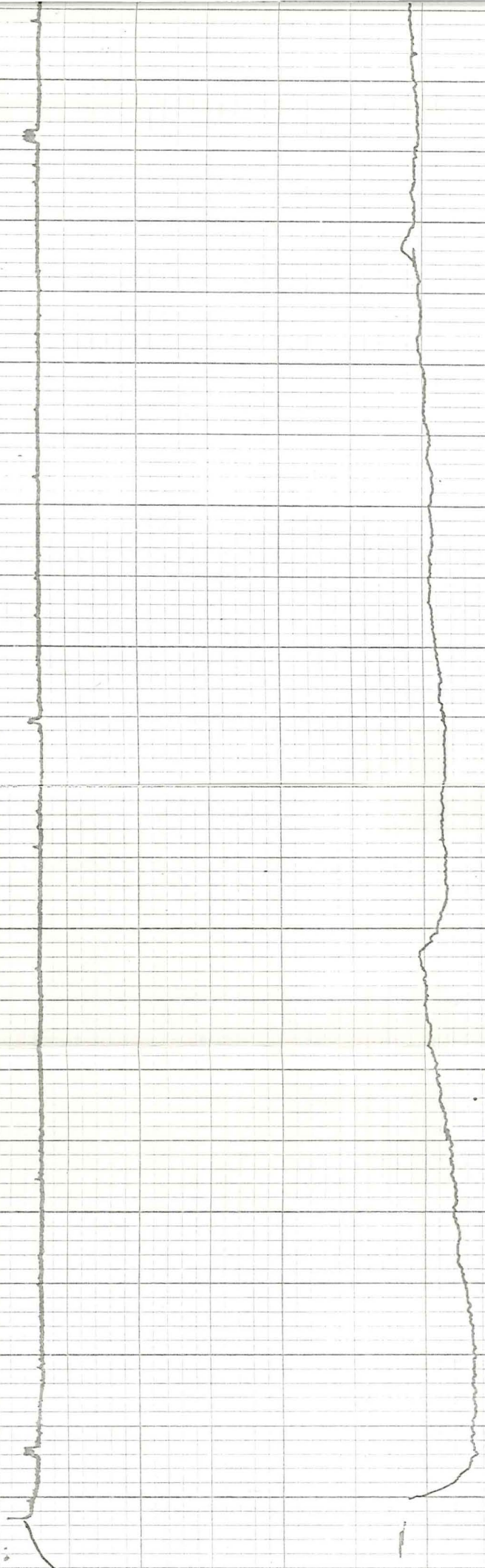
14:00
INCREASE flow
from Pond-5 To
Pond-7 β

12:39
INCREASE flow
To Pond-7 β

10:57
START INJECTION
PUMP TO PUMP Pond-5
TO Pond-7 @ 25 GPM β

10:37
9-16-82
CLOSED IN WELL HEAD β





00:43
w run up
flow at approx 300pm

Start of
Section 1
of 2