

TEST 2C
Injection

GL02971-58

TRACER PUMPS
OFF AT 10.15

10.30
Pump OFF

1000

0900

08:00

07:30

07:00

06:30

06:04

05:30

05:00

04:30

04:06

03:32

08:00

07:30

07:00

06:30

06:04

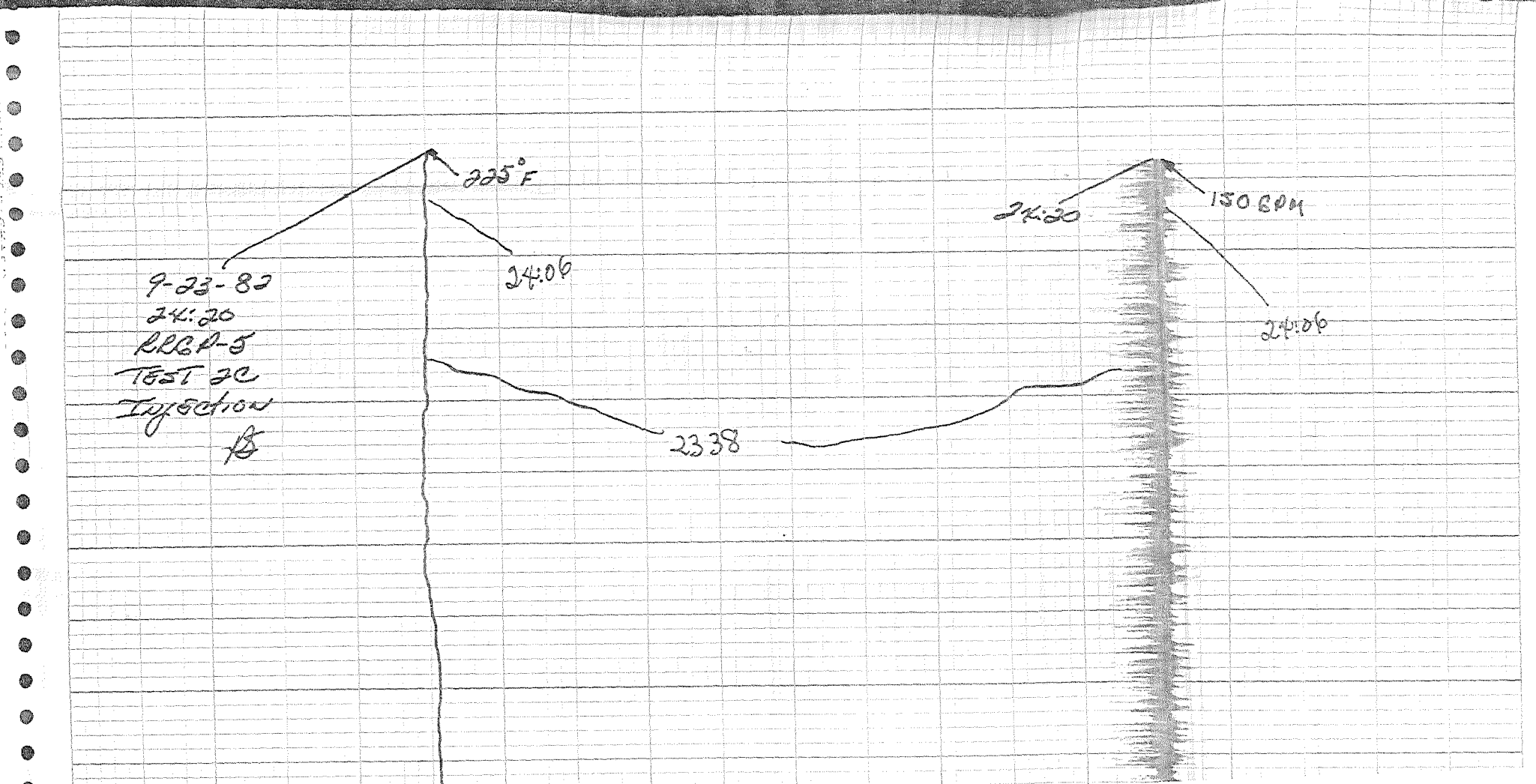
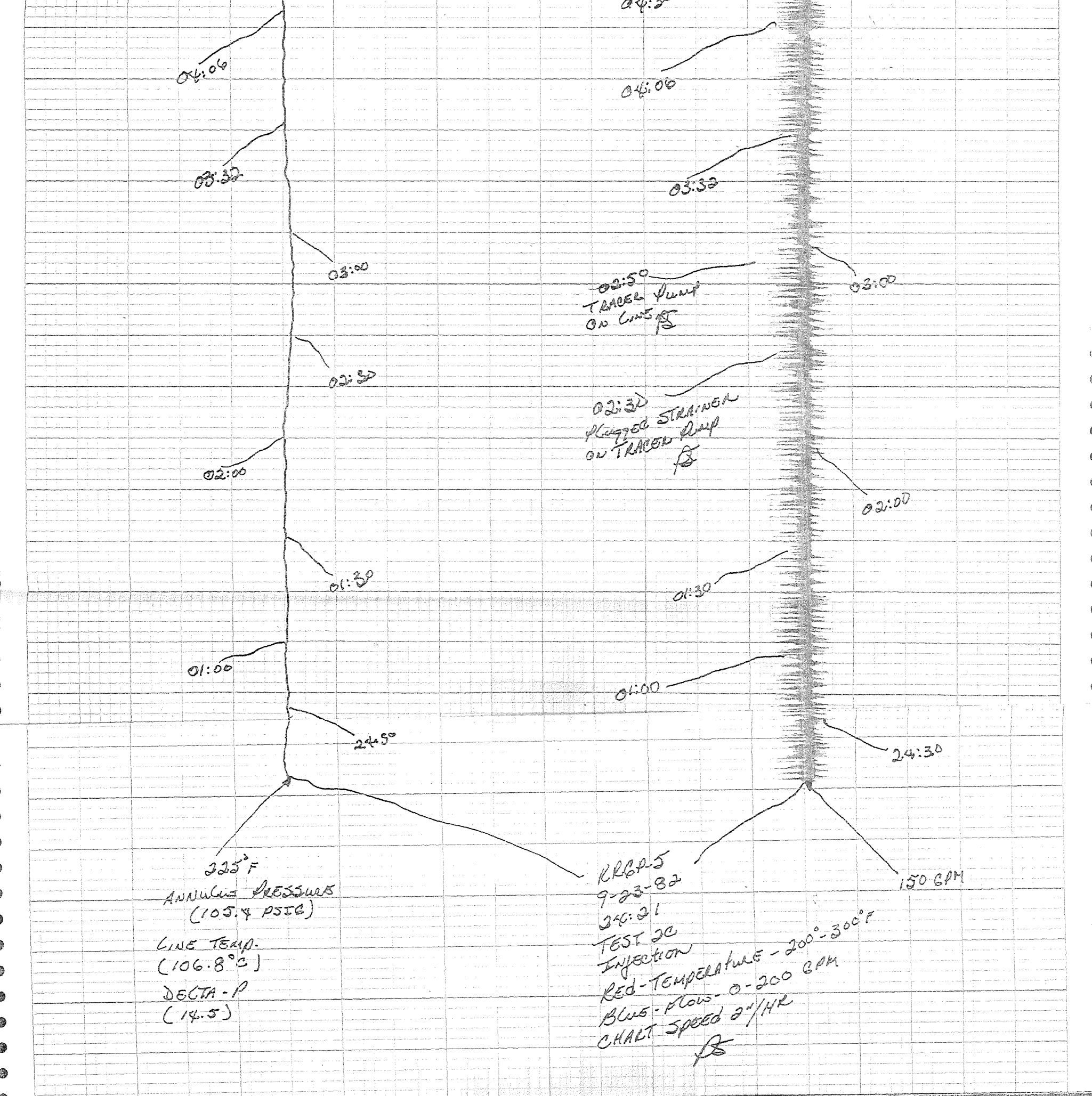
05:30

05:00

04:30

04:06

03:32



21:21

19:19

18:08

16:13

15:00

14:00

RELAP-5
9-22-82
1615
INJECTION #3
BLUE - FLOW 0-300 GPM
RED - TEMP 200-300°F
CHART SP-2" / HR
TE

~~1330~~ 1330

1300

1230

1100

223.3°F by Ther
~~10:18~~ 10:18 AM

1000

0900

0900

07:30

07:30

07:00

07:00

06:30

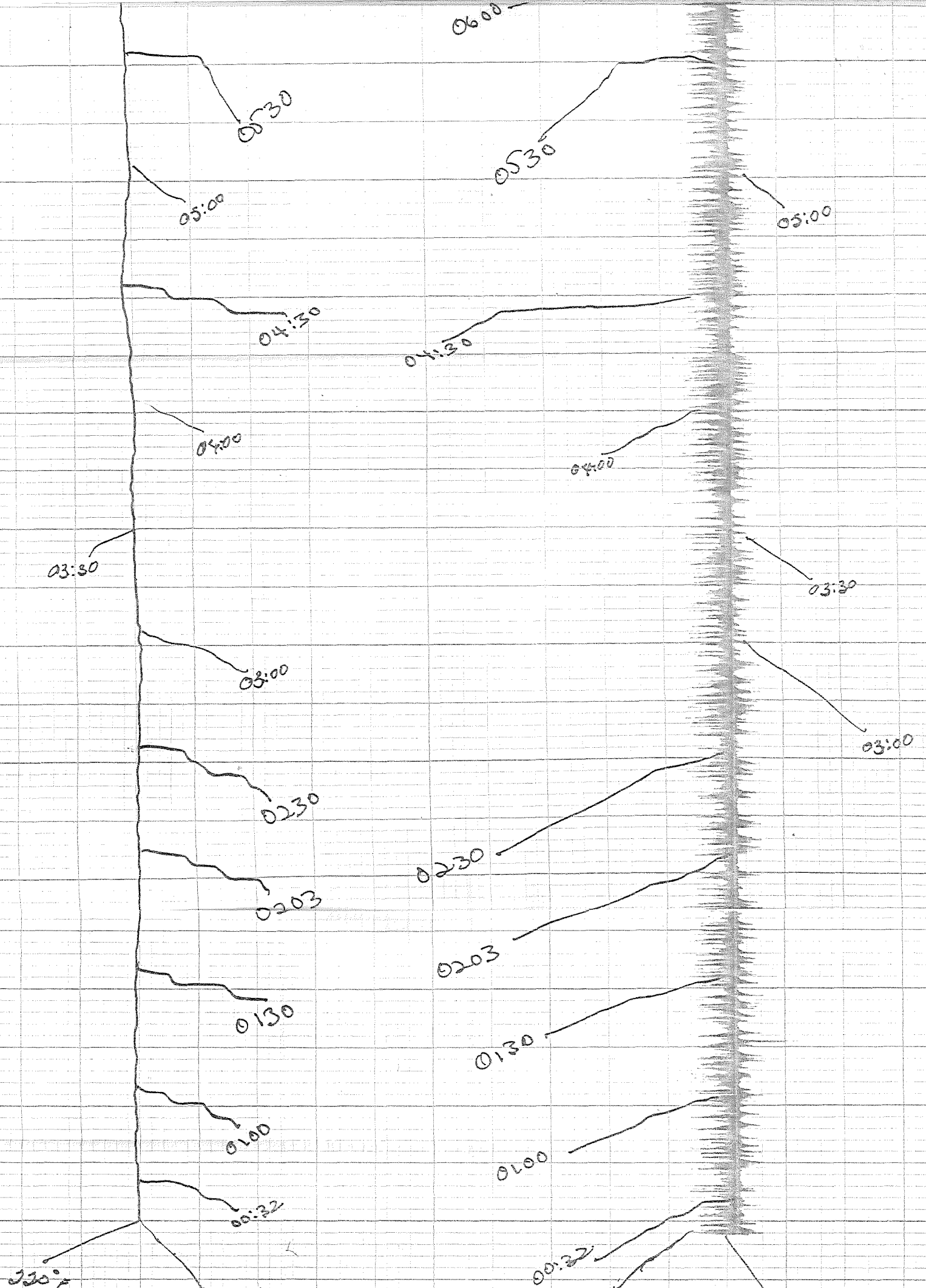
06:30

0600

0600

0530

0530



230°

24.28
 9-22-82
 REC 0.5
 TEST 2C
 Red-Temp. 200°-300°F
 Blue-Flow - 0-200 GPM
 CHART SPEED 2"/HR
 RS

150 GPM

24:26
 9/22/82
 REC 0.5
 TEST 2C

24:26

27:30

23:30
 ANNULUS 105
 115

23:00
ANNULUS
G.P. 14.5
9-21-82
TEMP 106.5

23:03

22:33
ANNULUS PRESS 105
AP 14.4
FLOW 150 GPM

22:02
ANN. PRESS 105
TEMP 107
FLOW 150 GPM
AP 14.5

21:35 ANNULUS 105

21:00 ANNULUS 105

20:30
106.6°C TEMP
ANNULUS 105
LINE PRESSURE 55
AP 14.5
TEST 2C

20:00 ANNULUS 105.5

19:30
ANNULUS 104.5
TEMP 106.4
AP 14.5
TEST 2C

18:40

19:00
AP 14.5
ANNULUS 105 PSIG
TEMP 107°C
TEST 2C

18:40
G.P. 14.8
ANNULUS 105
TEMP
TEST 2C

18:00

18:00 G.P. 14.5
ANNULUS 105
TEMP 107°C
TEST 2C

17:31 AP 14.3
ANNULUS 105
TEMP 107°C
TEST 2C

17:00
150 GPM
AP 14.4
ANNULUS 105.5
TEMP 106.8

16:30
ANNULUS 104.7
TEMP 107.2
AP 14.5
FLOW 150 GPM

16:00
ANNULUS 104.7
TEMP 107
AP 14.5
FLOW 150 GPM

15:00
°C 107.2
Annulus - 104.2
Flow ΔP 14.5 - PSIG
Flow Recorder - 150 GPM

14:45 Valved
out PH-Conduct-d
ORP Probes - Temp.
was to Hot for probes

14:00
°C - 106.8
Annulus - 102.2 PSIG

14:00
ΔP Flow 14.8
Flow Recorder - 150

13:30
107.3°C
Annulus 101.2°C

13:30
ΔP - 14.4
Flow @ 150 GPM

13:00
107°C
Annulus 99.3 PSIG

13:00
ΔP - 14.4
Flow @ 150 GPM

1300
225°F

12:30
107°C
Annulus @ 97 PSIG

12:30
ΔP - 14.7
Flow @ 150 GPM

12:00
°C 107.1

12:00
Flow 150 GPM
ΔP - 14.6

11:30
224.6°F 11:27
ΔP - 14.5
°C - 105.6
Annulus - 99.6 PSIG

10:31
Thermo - 104.2°C

10:22
TRABER
Pump Problem
Resolved

1008

ΔP - Flow - 14.6

09:59
Pump on
Flow Brought to
150 GPM
SAV625 - 28%

921-82
RRGP-5
Test 2-C
Blue Flow - 200 GPM
Reb Temp 200-300°F

RRGP-5

9-21-82