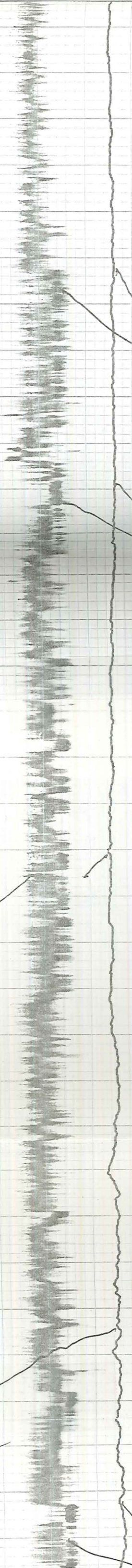


G102973-8

END of
SECTION 2
of 4



80:45

19:42
ERRATIC PEN
ON FLOW.

1733

1500

RR6P-3
 9-22-82
 CHART SPD. 2" / HR
 RED TEMP 250-300°F
 BLUE-FLOW 0-300 GPM
 #5 INJECTION

1500

1400

1300

1200

1100

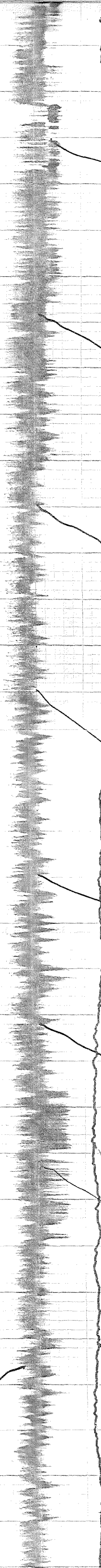
1000
9/22/82

0910

0805

0720

0720



0720

0720

06:05

06:05

0510

0510

0409

0409

0309

0309

02:13

02:13

01:18

9/22/82

RRB-3

TEST 2C

Red-TEMP - 250°-300°F

Blue-Flow - 0-300 RPM

CHART SPEED 3"/HR.

B

FLOW

TEMP

01:13

9/22/82

RRB-3

TEST 2C

B

FLOW

TEMP

01:15
9/22/82
R106A-3
TEST 2C
B

24:18

24:18

23:00

22:00

21:02

20:05
ANNULUS 85
TEMP 139.5
LINE PRESS 70.5
TEST # 2C
HJH

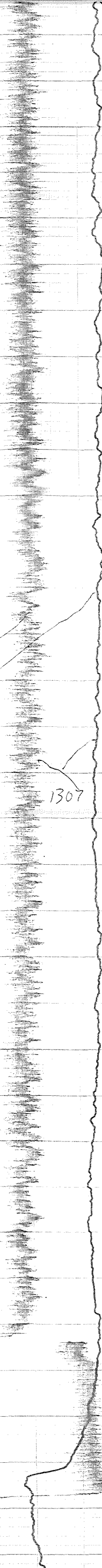
19:10 ANN. PSIG 85

18:20 ANNULUS PSIG 84.8

17:14 ANN. PSIG 85

1357

1307



U

01:33
SAUG OPEN TO
48%

01:35
SAUG OPEN
TO 50% \bar{A}

01:00
CLOSED IN TO
Pond-7
B

01:07
INCREASED flow
TO Pond-5
B

9-21-82
24:55
RRBP-3
Blue - flow - 0-300 BPM
Red - TEMPERATURE - 250°-300°
CHART SPEED 2"/HR
B

13:20
DECREASE flow
TO Pond-7
B

13:27
INCREASE flow
TO Pond-5
B

10:00
INCREASED LINE
PRESSURE
B

10:31
INCREASED flow TO Pond-5
DECREASED flow TO Pond-7
B

09:26
INCREASED
LINE PRESSURE
B

08:55
INCREASED flow TO Pond-5
B

10:00
INCREASED LINE
PRESSURE $\$$

10:31
INCREASED flow To Pond-5
DECREASED flow To Pond-7
 $\$$

09:26
INCREASED
LINE PRESSURE
 $\$$

08:55
INCREASED flow To Pond-5
DECREASED flow To Pond-7
 $\$$

9-20-82
08:48
INCREASED LINE
PRESSURE $\$$

Start of
Section 2 of 4