

6102974-12

Test 2D

Data 10-22 to 10-25/82

Oct. 25/82

Conductivity probe removed

16:30

4600'

4700'

4800'

4900'

4700'

4600'

10-25-82 16:14
50' / IN RATE FT / MIN = 20
CMT

16:14

15:33

14:04

13:05

Test 2D

Oct 25/82

14:04

Test 20

13:05
Oct 25/02

1159

1130

1101

1030 heater off

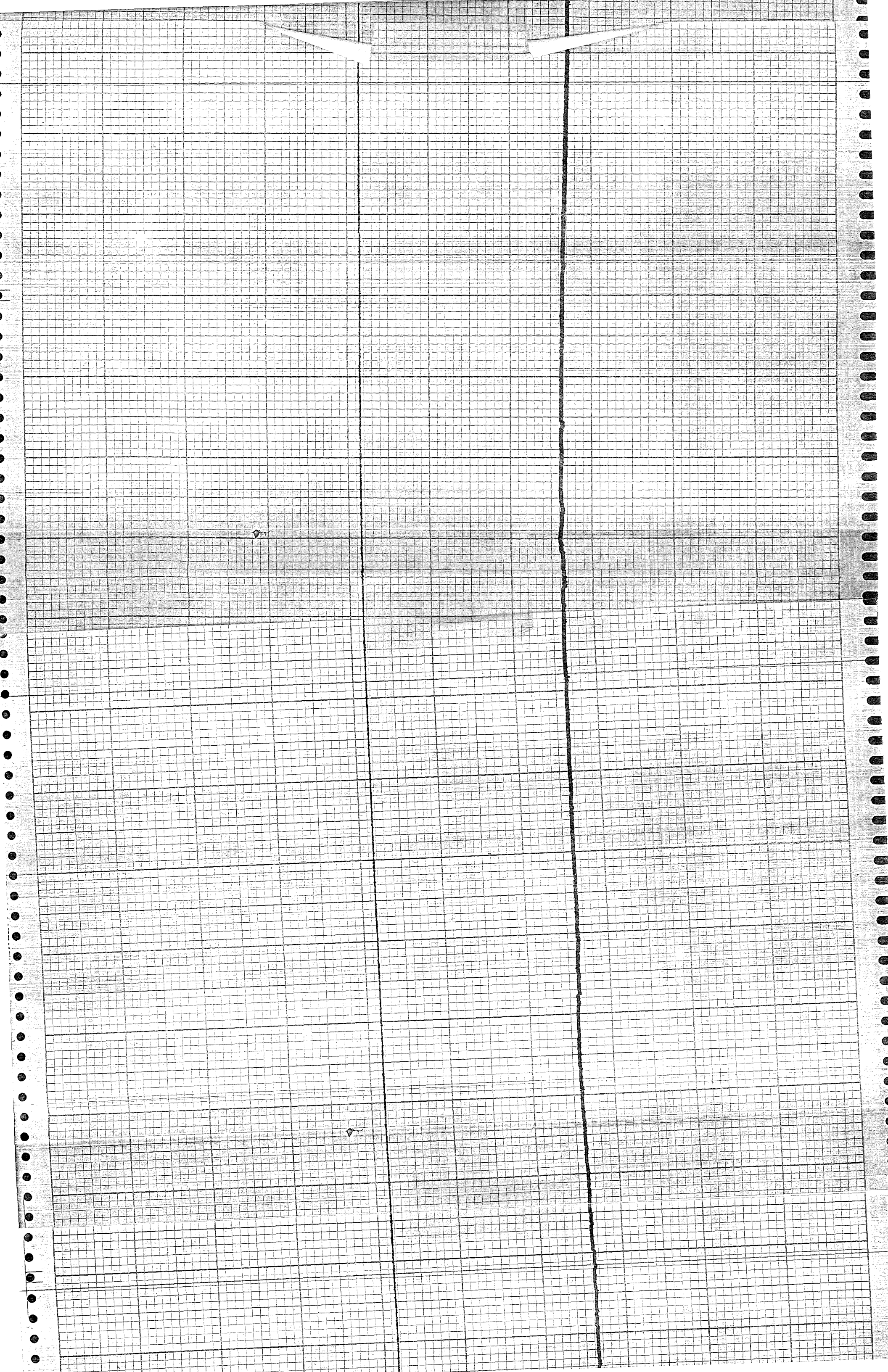
0958

0930 1 heater off
low

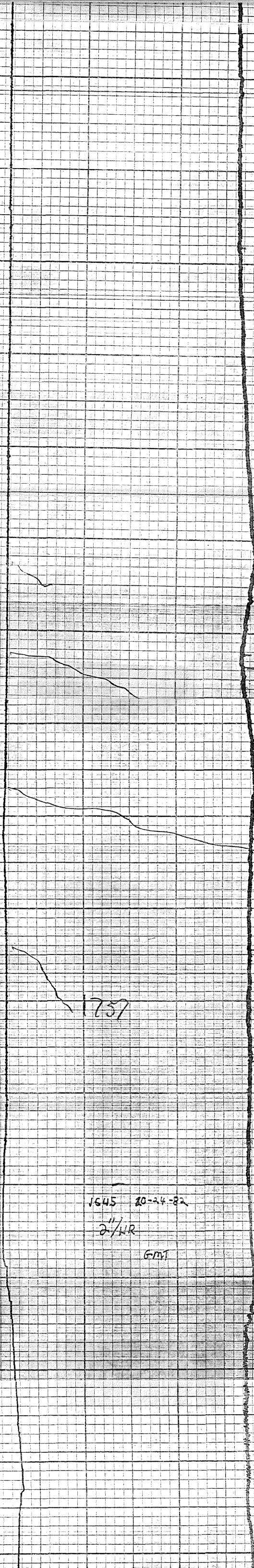
0909

0820
heater on

0746
OCT 25
heater off



5283-0704
STANDARD



2002 heaters on
door closed

1932 heaters off
door open

1850 plugged in
2 heaters

1757

1757

1645 20-24-82
2 1/2 HR
GMT

4600'

4700'

4800'

4500'

4825'

*

4600'

4700'

4600'

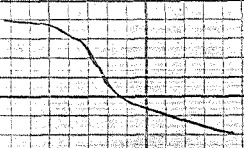
16:20 10-24-82
50'/IN
GMT
RATE FT/MIN = 20

1530

1501

1403

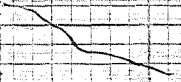
1319



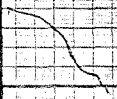
1128



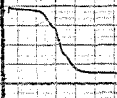
1058



1034



0958



928



0905



900

930 Oct 24/92 SWK

22.20 10-23-82
2"/HR
G-MT

4600

4700

4800

4825

4800'

* 4825'

4800'

4700'

4600'

22:00 10-23-83

RATE FT/MIN = 30
50' IN
GAT

2001

1932

1901

1881

1857

1735

1735

1627

1601

1457

1426

1402

1306

1306

1247

1153

1128

1100

0930

TIME
TIME/base

0930

4600'

HEWLETT PACKARD 9280-0262

09:30
JMT 4600'
TIME/base

0930 4600'

4650'

4700'

4750'

4800'

TP
4740 ind.

4800'

4750'

4700'

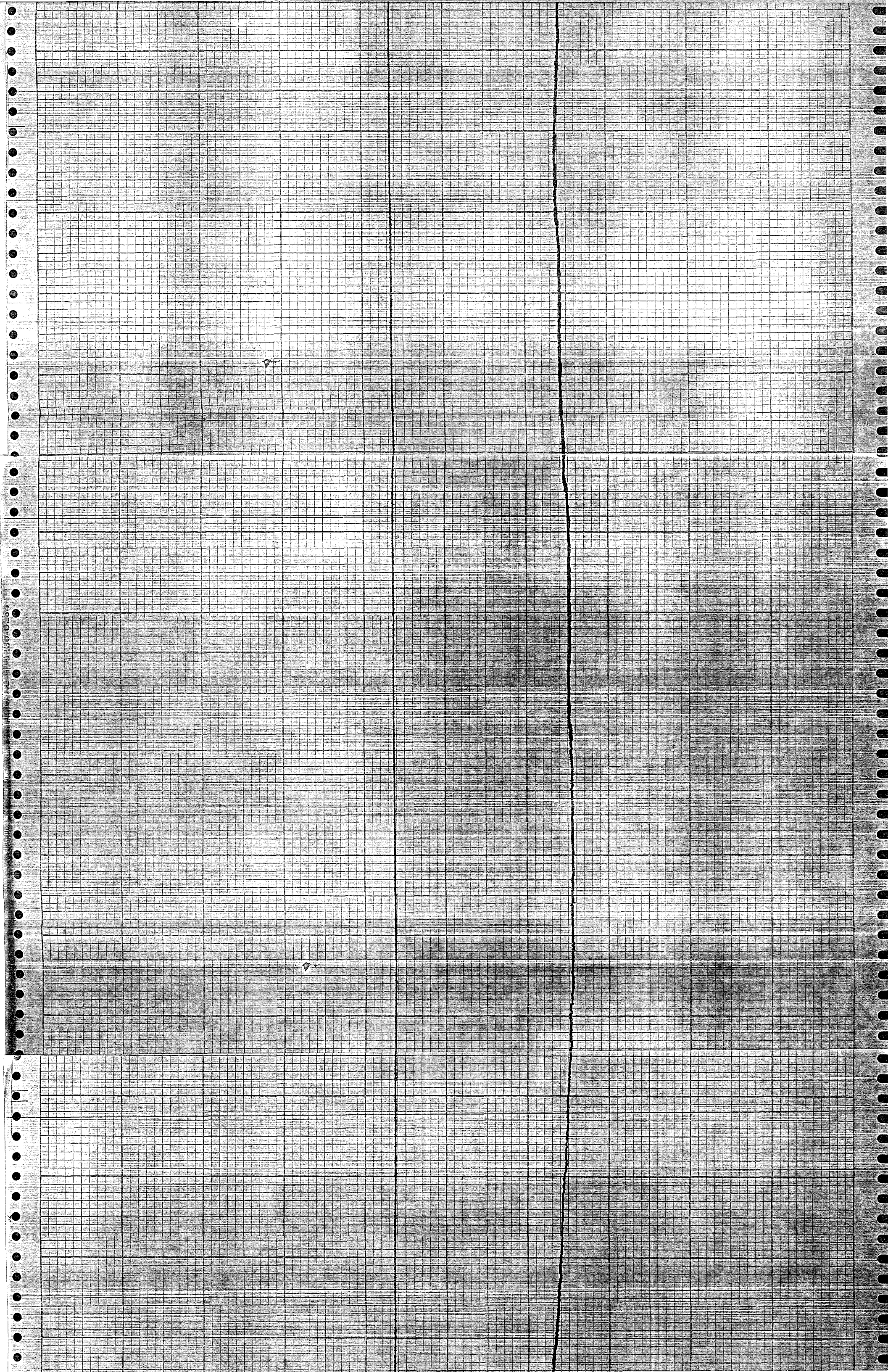
4650'

Conductivity Log
10/23/82
09:00 JMT

50/in 4600'

08:55
10/23/82

← 0951 0022 000



22:32
10-22-82
2 1/4 HR
GMT

4600'

4700'

4800'

TD
3842'

4800'

4700'

4600'

22:05
10-22-82
50' IN
RATE 17/HR = 20
GMT

G.M.

1921 10-22-82 2 1/2 HR

300

200

RED TEMPERATURE °F

BLUE CONDUCTIVITY 2K 0K

20K

TEST 2D

RRGW #5
CONDUCTIVITY/TEMP LOG
4600' BASE
8M.P

0K