

6L0297425

End of Section
2 of 3

00:43
10-29-82
JK

23:15

23:15

21:22

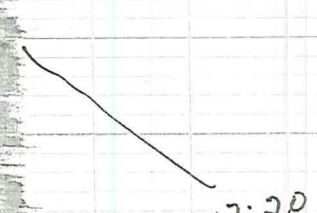
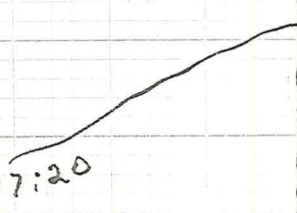
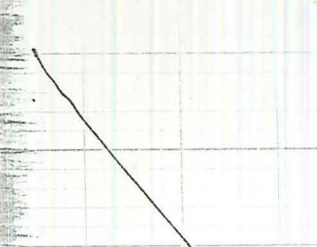
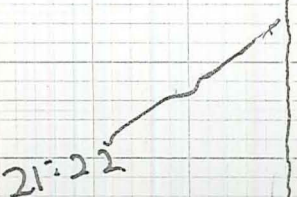
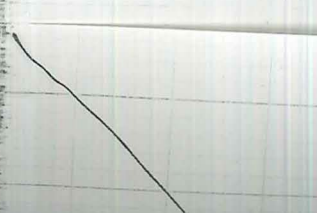
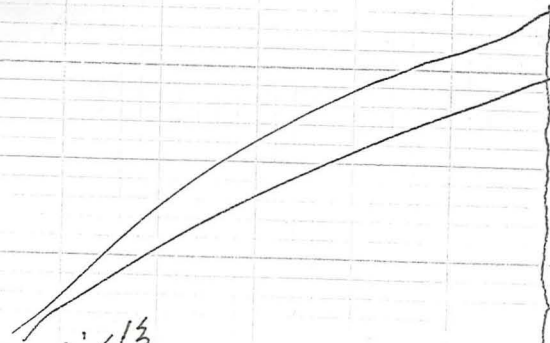
21:22

19:20

19:20

17:20

17:20



1419

1202

11

78-87-01

0703
L.K.

0500

0302



0056
10-28-82
RRP 15
test 20 Backflow

drop = 2 1/4"
Blue Flow 0-250 GPM
Red Temp 200-300
(28)

23:35

23:35

21:45

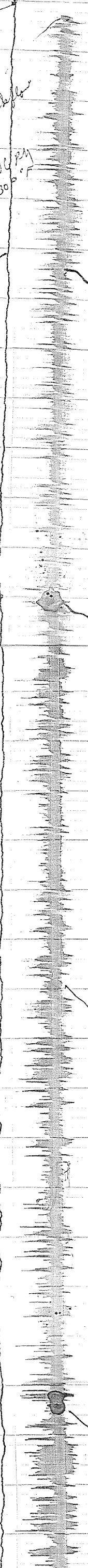
21:45

19:45

19:45

16:30

16:30



12:30

15:30

15:05

REPLACED BLUE BCN

13:00

10:20
changed Blue pen
forgot to chop back down
onto page

changed blue pen
forgot to chop back down
onto page

H46

09.19

09.80
C.R.

0501

03.00

0300

0100

RRCP#5

10-27-82

Test 2-D Backflow

Red Temp 200-300°F

Blue flow - 0-250 GPM

ch sp = 2" / hr

LS

22:40

20:53

19:27

19:23

RR6P-5
10-26-82
CHART SPD-2"/HR
TEST 2D, BACK FLOW
TO POND #7
RED- TEMP 200-300°F
TI= 120.6°C
BLUE- FLOW 0-250 GPM
DP= 7.6 PSID
PNN= 96.0 PSIG

17:36

13:02

12:08

12:08

11:15

10:25

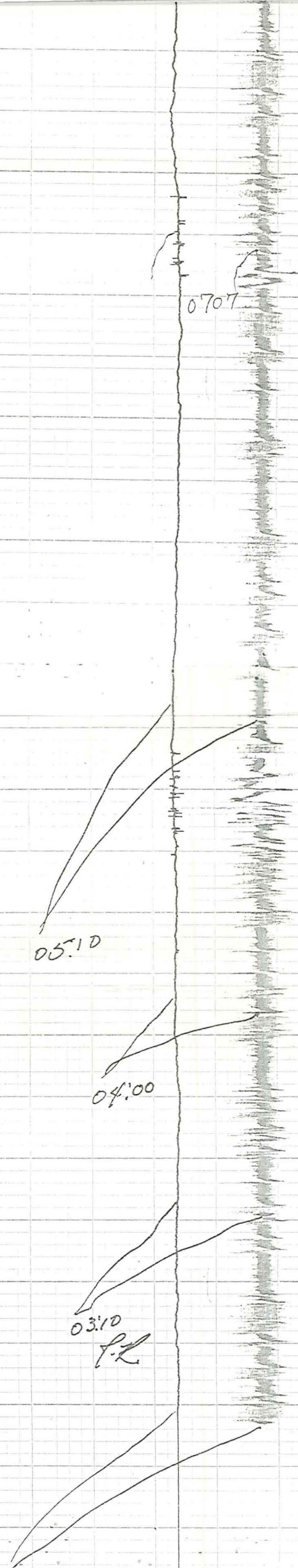
9:15

Oct. 26
Back flow
Test 2D

08:36

07:07

05:10



02:20
 RR6P#5
 10-26-82
 Test 20 Backflow
 Ped = Temp - 800-300°F @ 1/dia
 flow - 0-250 GPM @ 2.5/dia
 2.5/dia to

Annulus @ 95.5 PSIG
 L. Press @ 70 PSIG
 DP @ 7.5 PSID
 Flow @ 145 GPM

Start of Section
 2 of 3