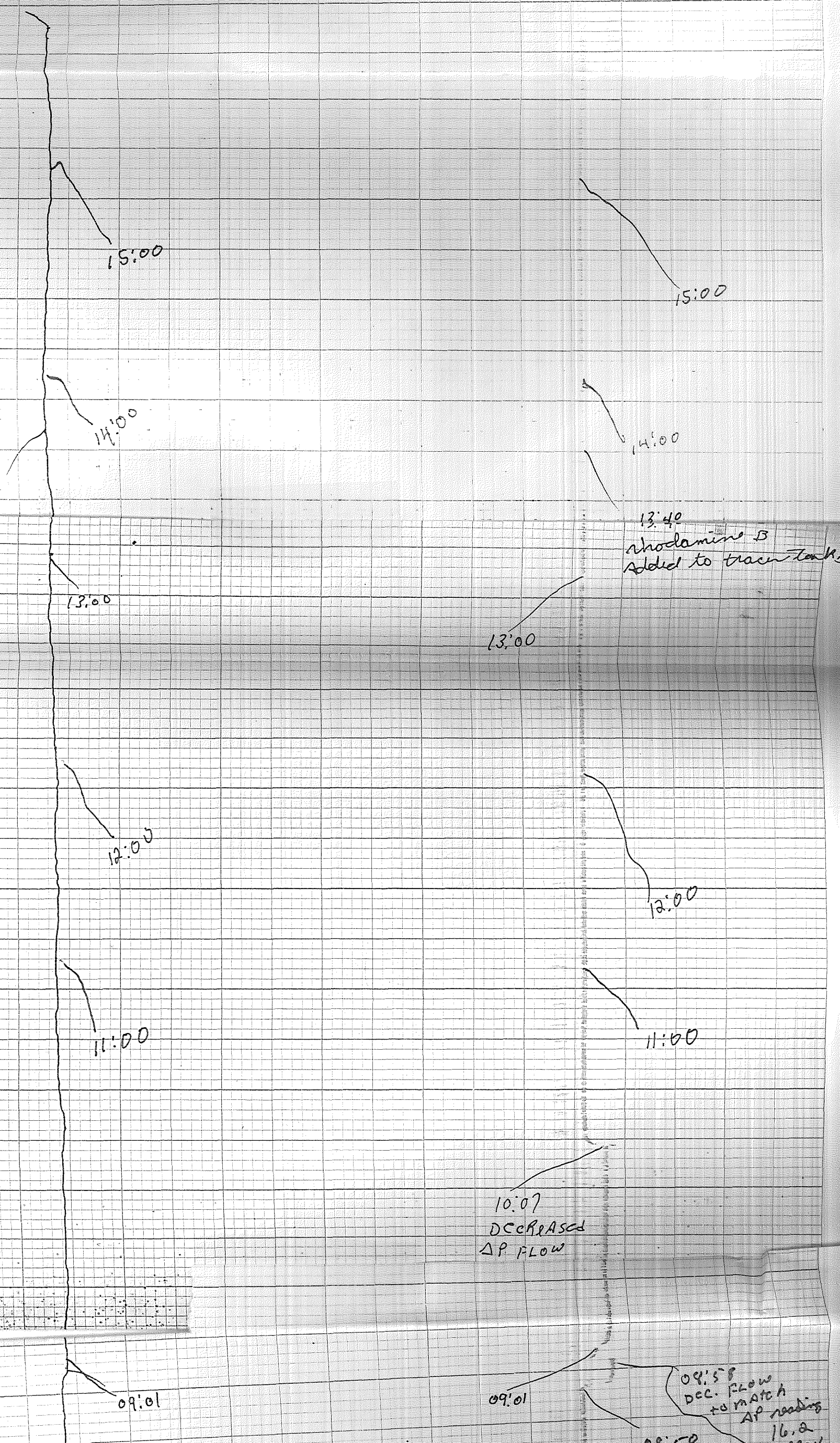


# Injection Test 2D

Injection stopped 15:00

Oct. 22 / 88



13:40  
Rhodamine B  
added to tracer tanks

10:07  
DECREASED  
ΔP FLOW

09:50  
DEC. FLOW  
TO MATCH  
AP reading  
16.2



09:01

09:01

09:58  
DEC. FLOW  
TO MATCH  
AP reading

09:50  
AOS FLOW  
UP TO 155 GPM  
NH  
16.2  
APPROX  
157 G.P.M.

08:00

08:00

07:00

07:00

06:00

06:00

05:00

05:00

04:00

04:00

03:00

03:00

02:00

DELTA-P = 16.0  
Ⓟ

01:12

01:12

01:12

01:12

24:16  
 10-22-82  
 RRCD-5  
 TEST 20 INJECTION  
 RED-TEMP- 200°-300°F  
 BLUE-FLOW- 0-200 BPM  
 CHART SPEED 2"/HR  
 ANNULUS - 109 PSI  
 DELTA-P - 16.7 PSD  
 TEMPERATURE - 106.8°C  
 A

24:15

24:05  
10/22/82

24:15

24:05  
10/22/82

23:00

22:00

21:00

20:00

20:00

19:00

18:00

17:00

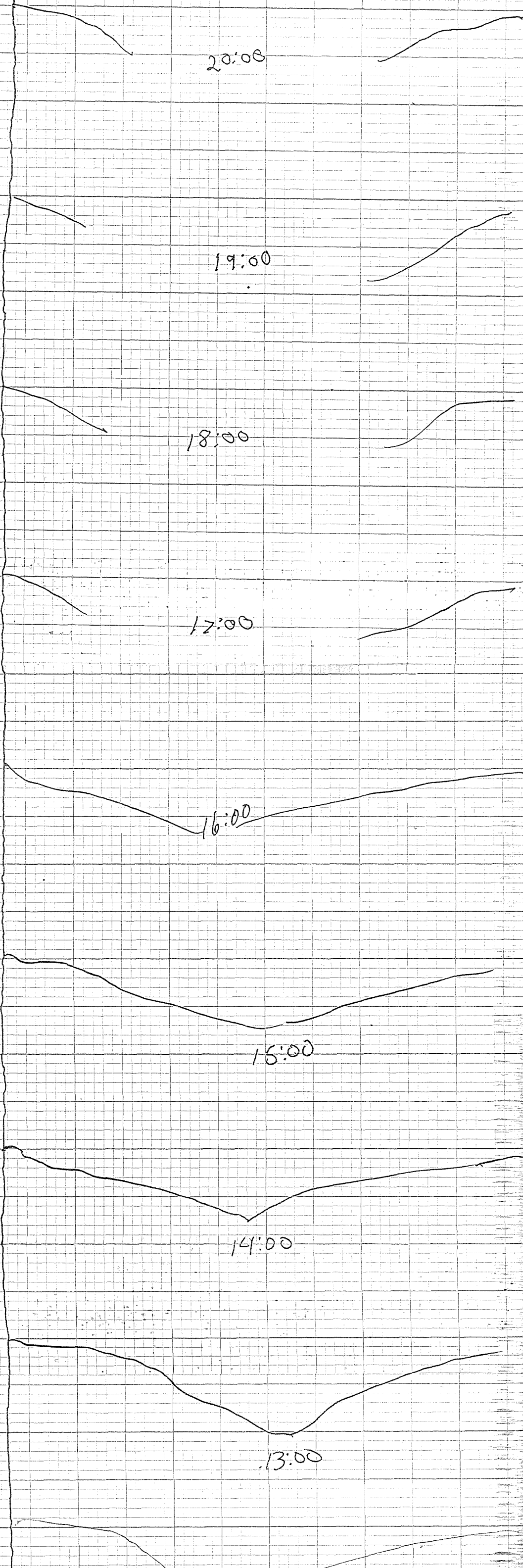
16:00

15:00

14:00

13:00

KRIP-5  
10-21-82  
#3 INJECTION  
RED TEMP 200-300°F  
BLUE FLOW 0-300 GPM  
CHART SPD 2" / HR  
JE





13:00

12:00

11:00

10:00

09:00

08:09

10-21-82

RRGP #5

TEST 2D INJECTION

Red - TEMP - 150-300°F

Blue - Flow - 0-300 GPM

CHART SPEED 2"/hr

CHD

07:00

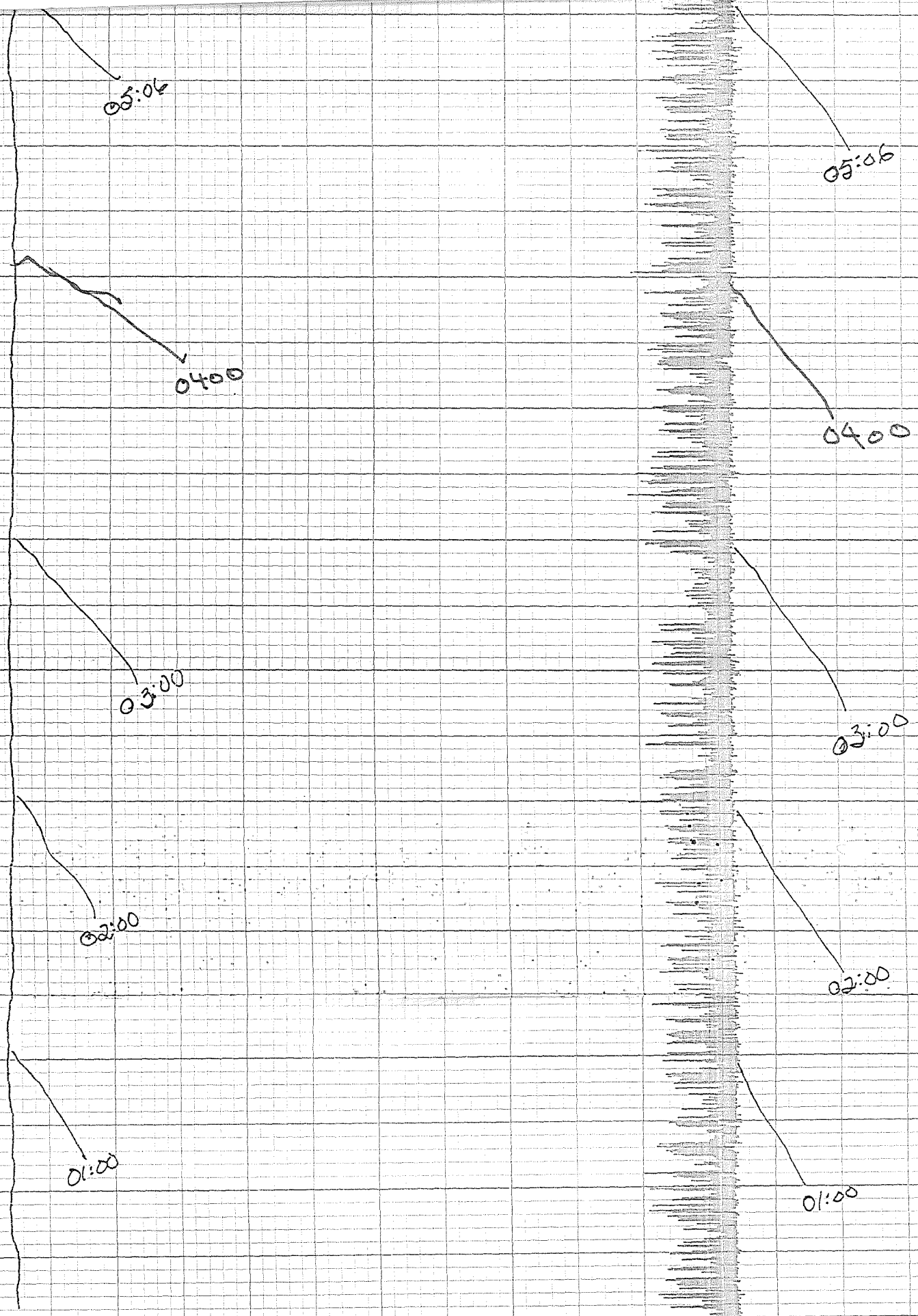
07:00

06:00

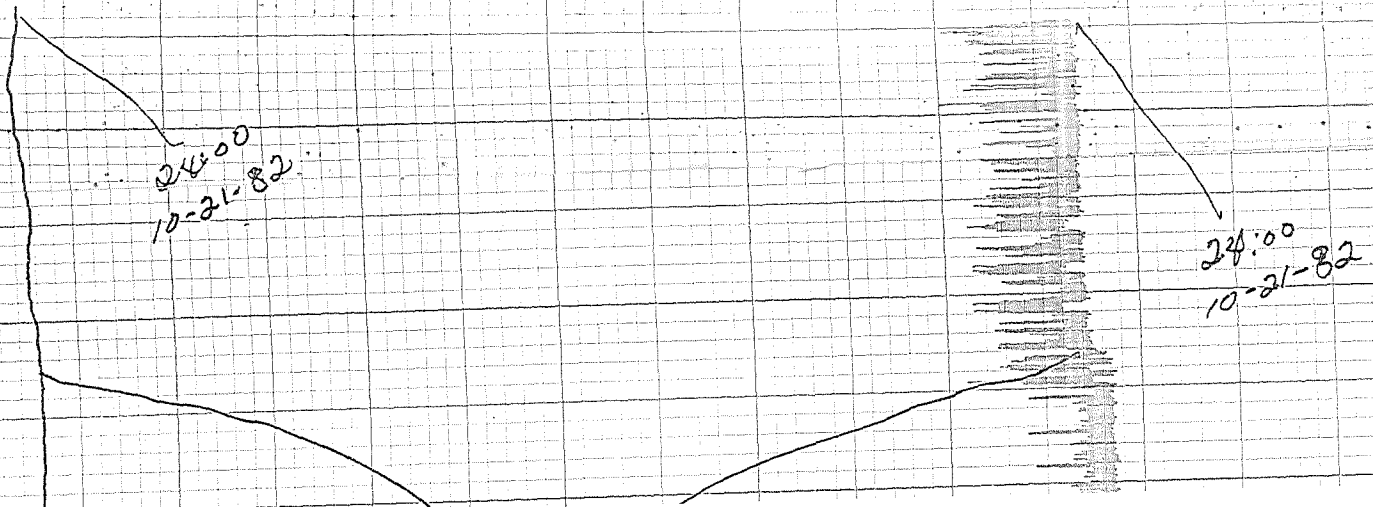
06:00

05:06

05:06



24:02  
 10-21-82  
 RRC-5  
 TEST 2D INJECTION  
 Red-TEMP - 200°-300°F  
 Blue-Flow - 0-200 GPM  
 CHART SPEED 2"/HR  
 ANNULUS - 107.2 PSIG  
 DELTA-P - 16.1 PSID  
 TEMP - 105.8°C



24:00  
10-21-82

24:00  
10-21-82

23:03

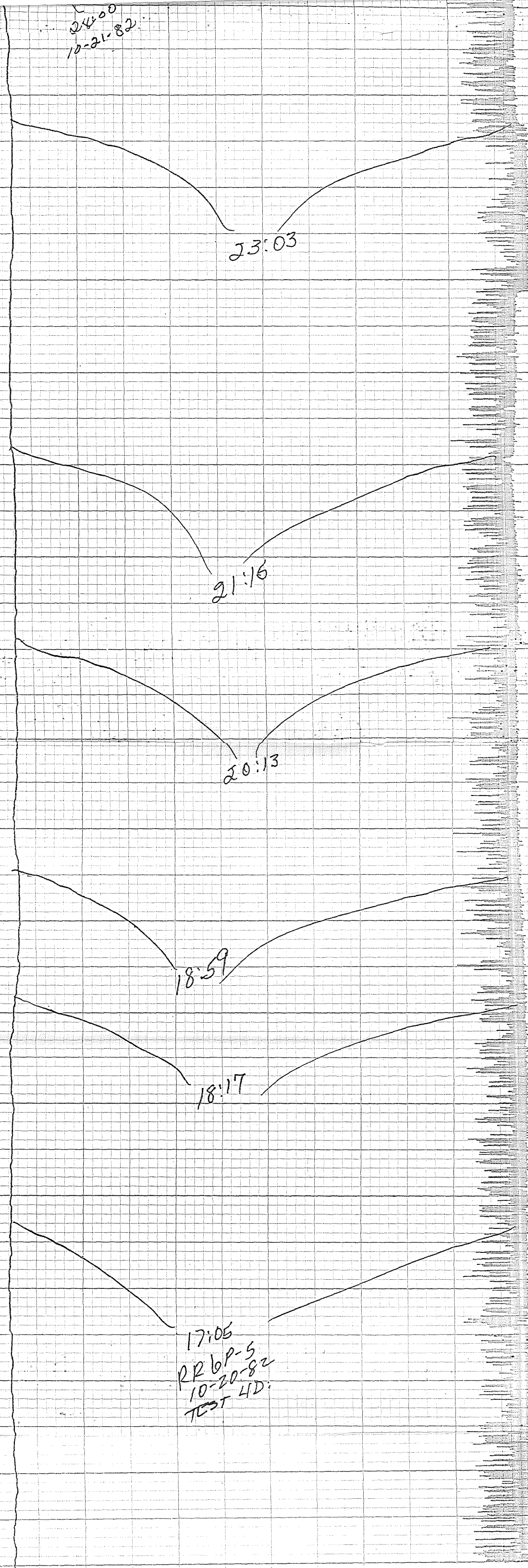
21:16

20:13

18:59

18:17

17:05  
RR 6P-5  
10-20-82  
TEST 4D





15:00

14:00

13:40:40

13:35

13:44:50  
STOPPED  
Inject.

13:35  
STARTED TRACER  
Inject. pump from  
TANK "C"

13:47:50  
STOPPED  
TRACER  
Inject.

13:45

13:02

12:00

11:00

10:00  
10-20-82

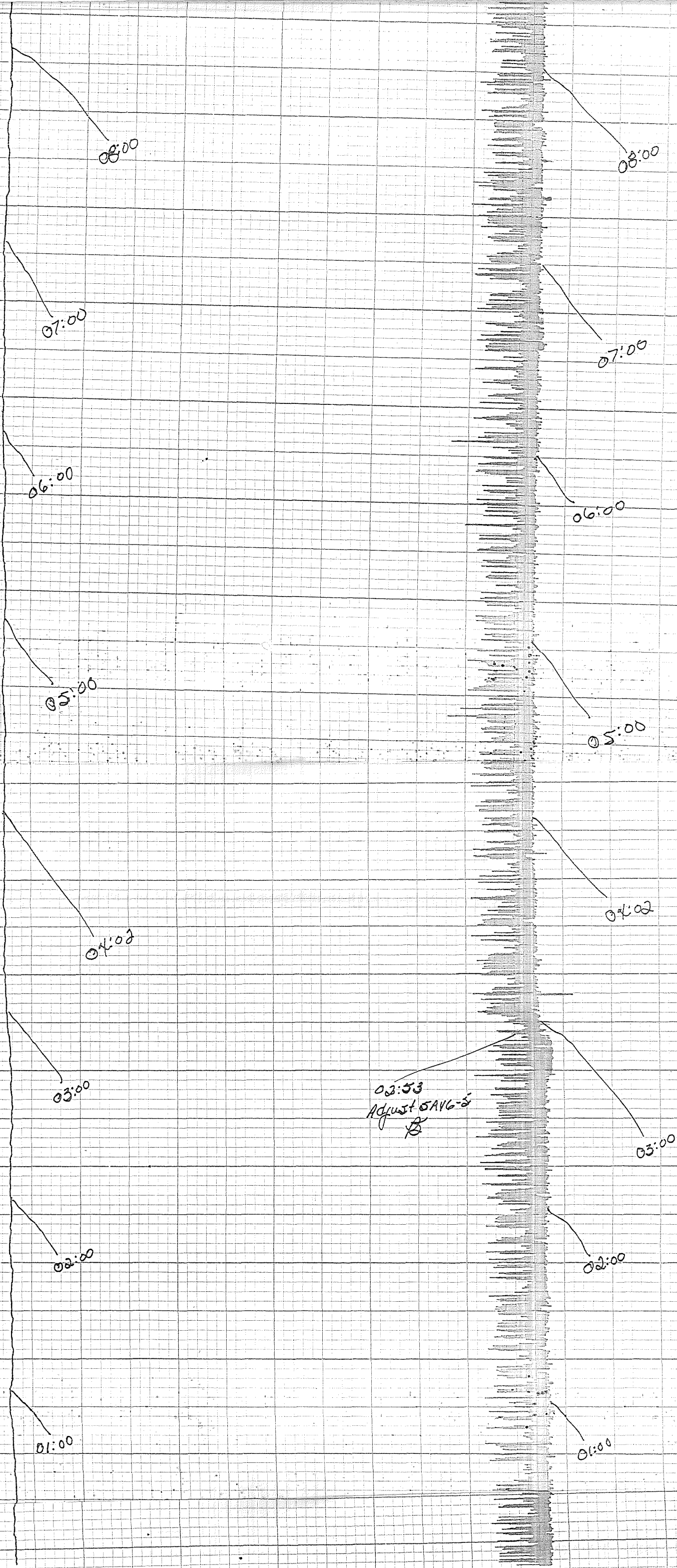
09:07

valve adj

08:00

08:00





03:53  
Adjust SAVG-5  
B

24:00  
10/29/82

23:00

21:00

18:02

24:00  
10/29/82

23:00

21:00

20:00

18:59

18:02



18:02

18:02

ADJUST  
VALVE

17:03

17:02

16:19

10/19/82

16:19

RRGP#5

TEST 2D INJ

Red = Temp 200-300°F

Blue = Flow 0-200 GPM

ch/5 Pd 2" @ NR

HN

15:01

1347  
STOPPED TRACER  
Injection pump  
FROM TANK C

1335  
STARTED TRACER  
Injection pump  
FROM TANK C

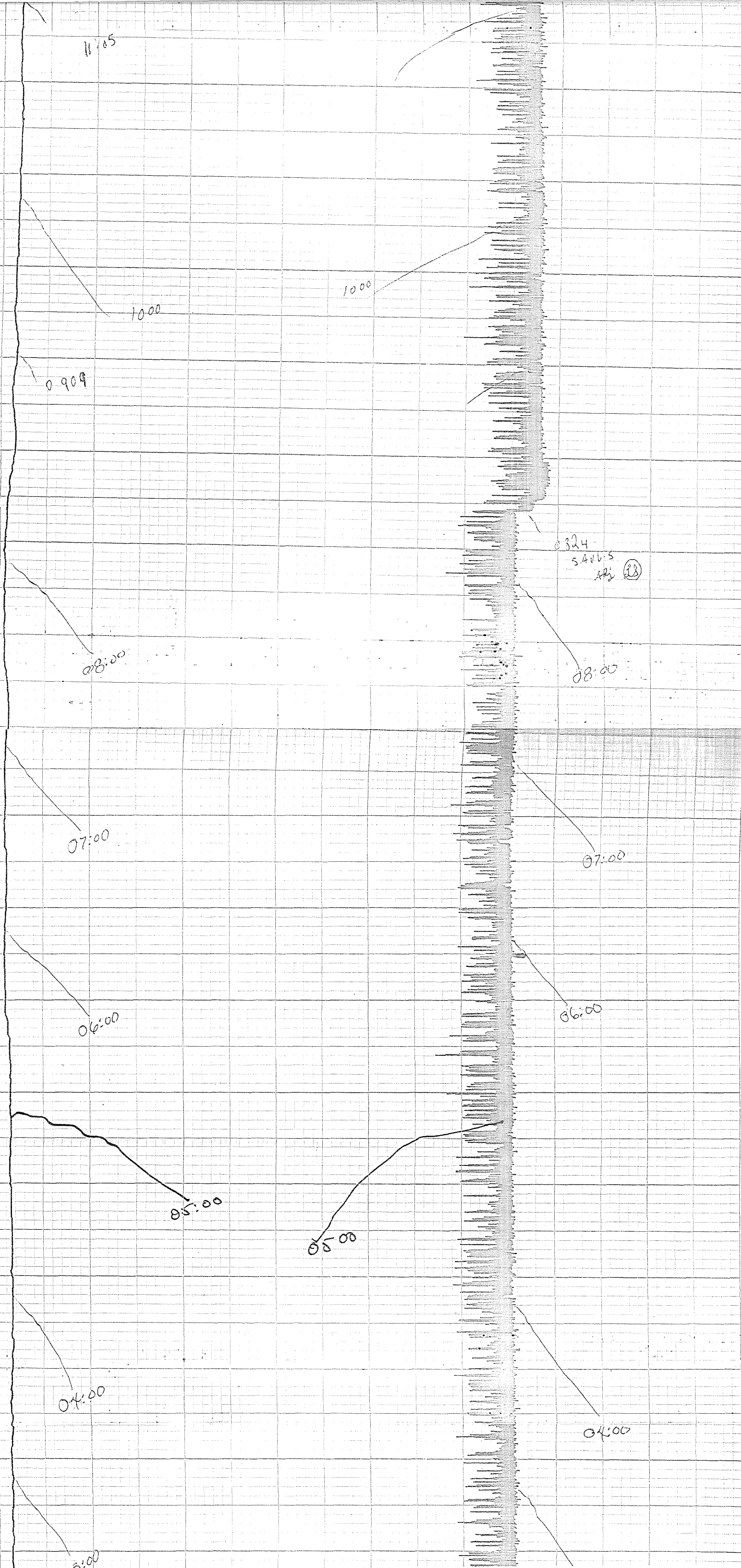
VALVE adj 12 13:04  
(2)

13:00

12:01

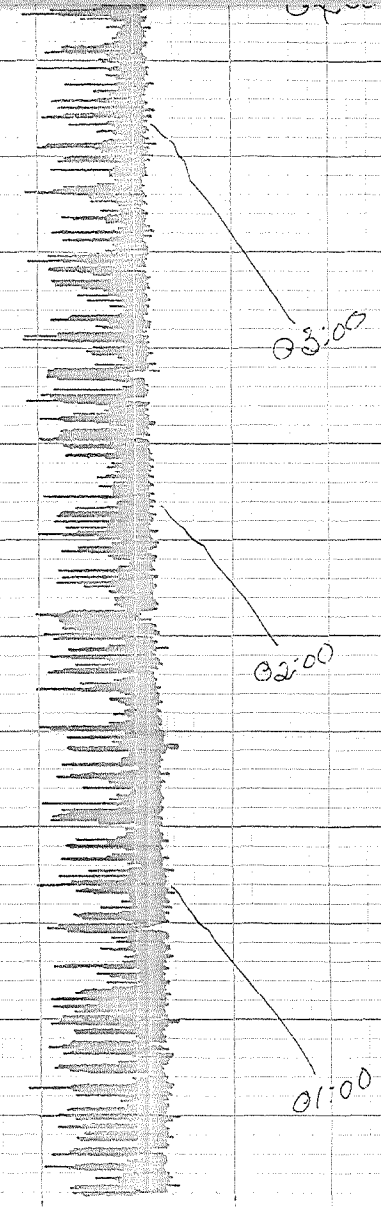
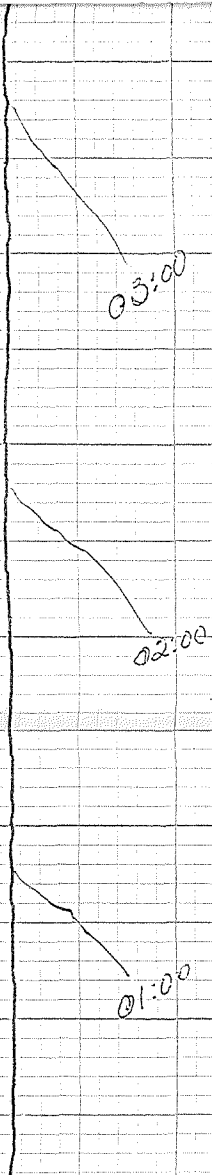
11:05

11705

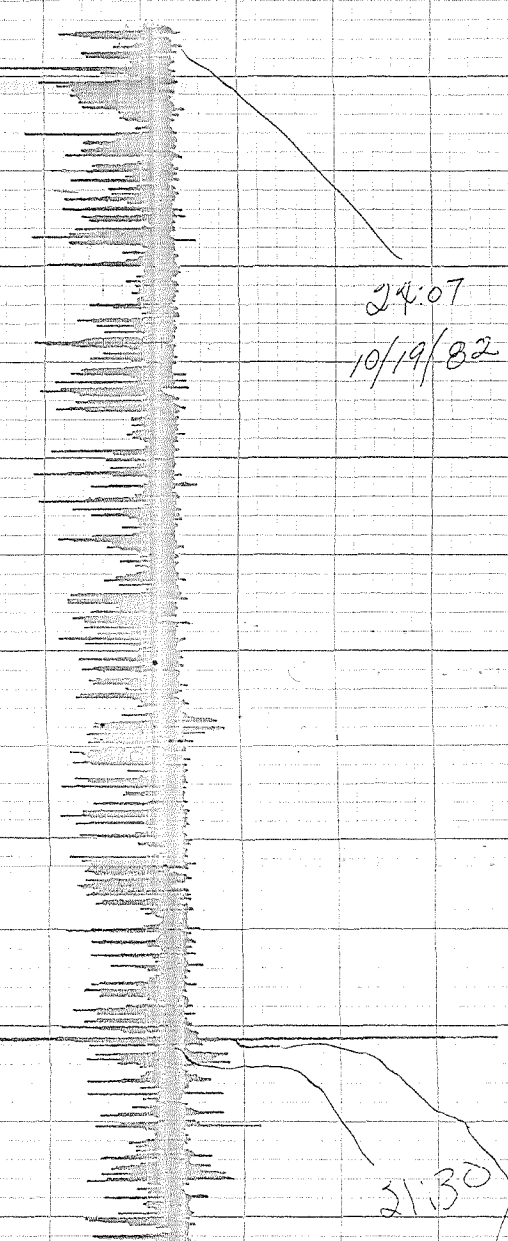
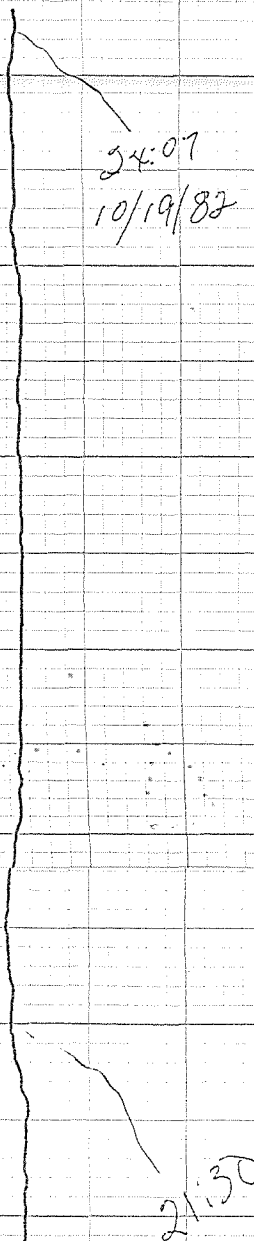


0324  
54005  
ARJ (23)





24:13  
10/19/82  
RLBP-5  
TEST 2D injection  
Annulus - 107.5 psib  
DELTA-P - 15.9 psid  
Temp - 105°C  
BED-TEMP - 200°-300° F  
Blue-Flow - 0-300 GPM  
WELL SPEED - 2"/HR



24:07  
10/19/82

21:30

21:30

VALVE SURGING again

14:30  
valve increased

17:41  
valve surging again

14:54  
valve flow increased

16:45  
increased flow

16:12  
valve

16:06  
auto valve operating with  
turn manual mode

RRGI #5  
10-18-82  
16:06  
Blue - Flow - 0-300 GPM  
Red - Temp - 200-300°F  
CHART SPEED - 2"/hr  
Test 2D Injection  
CURS

1530

1500

1405

1405

1430

1327

1327

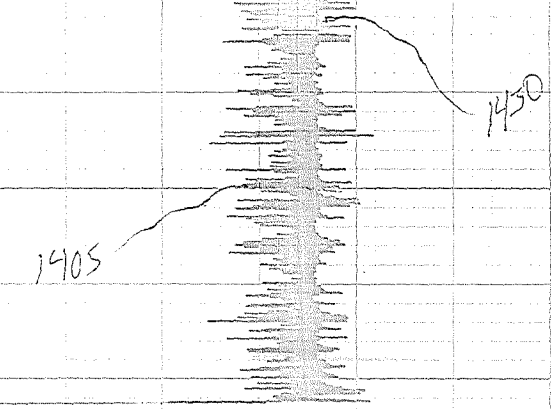
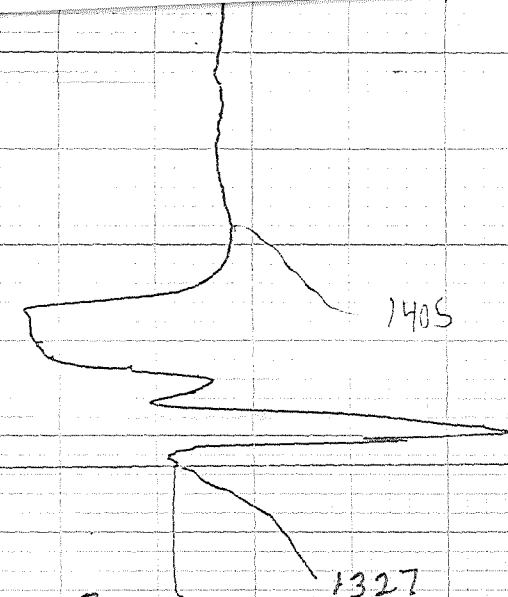
pump start  
13:30

13:35 Tracer injection  
initiated

13:46 Tracer injection  
Stopped

10-18-82  
TEST 2D  
BLUE = FLOW 0-200 GPM  
RED = TEMP 200-300 °F  
CHART SPEED = 2"/hr.





1327

10-18-82

TEST 2D

BLUE = FLOW 0-200 GPM

RED = TEMP 200-300 °F

CHART SPEED = 2"/hr.

RRG P # 5

pump start  
1330

1335 Tracer injection  
initiated

1346 Tracer injection  
Stopped.