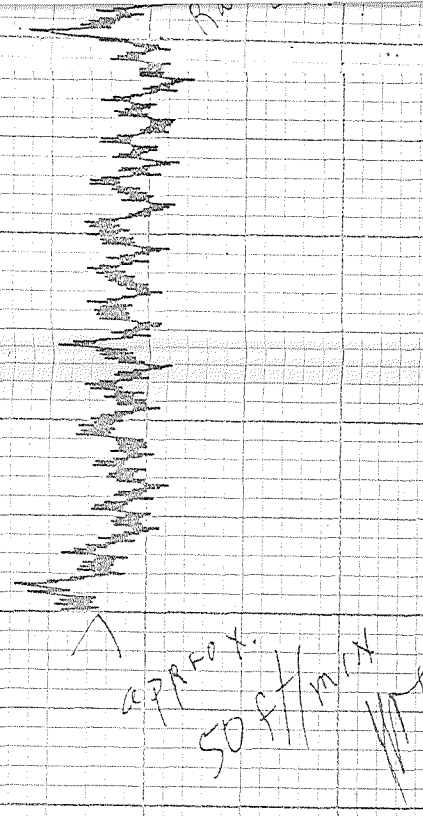


4540'

4560'

4580'

4600'



4660'

4720'

4740'

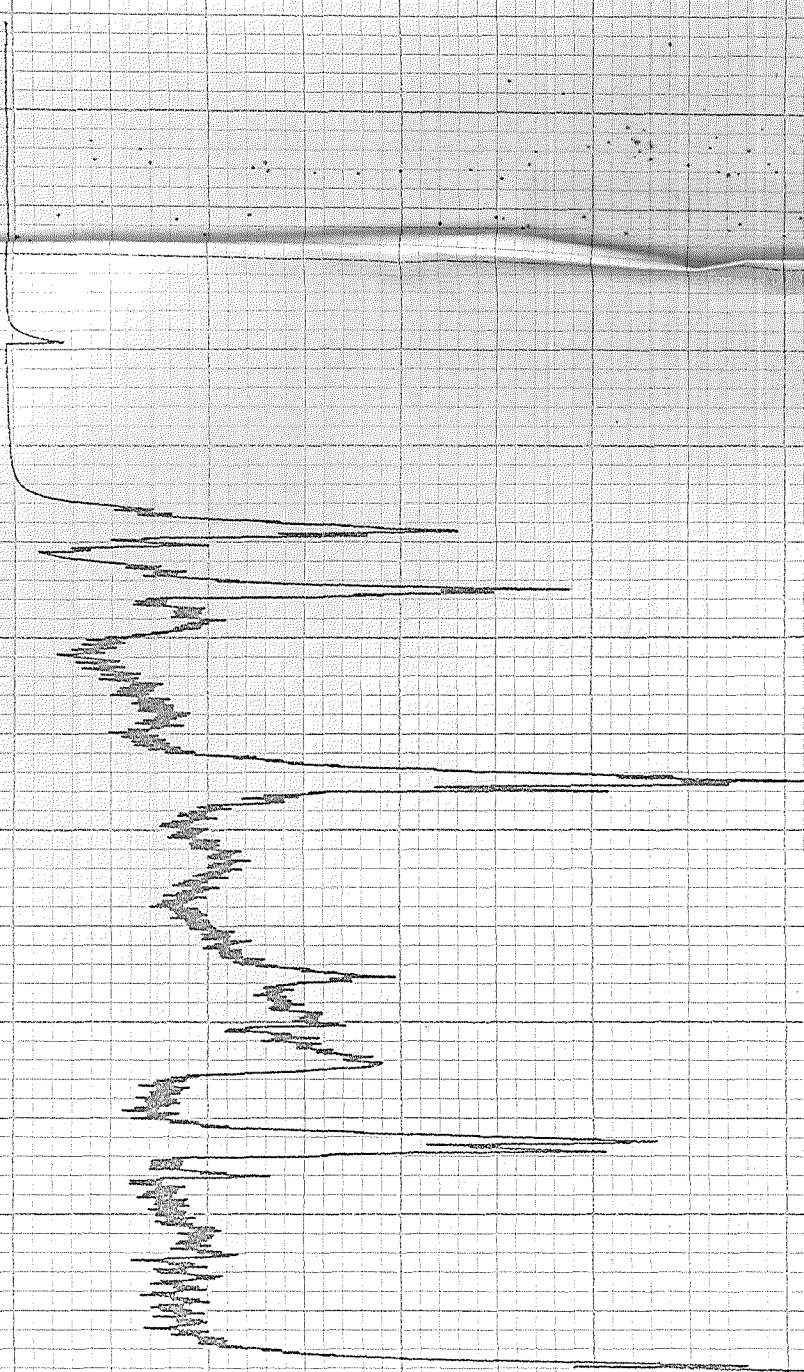
4760'

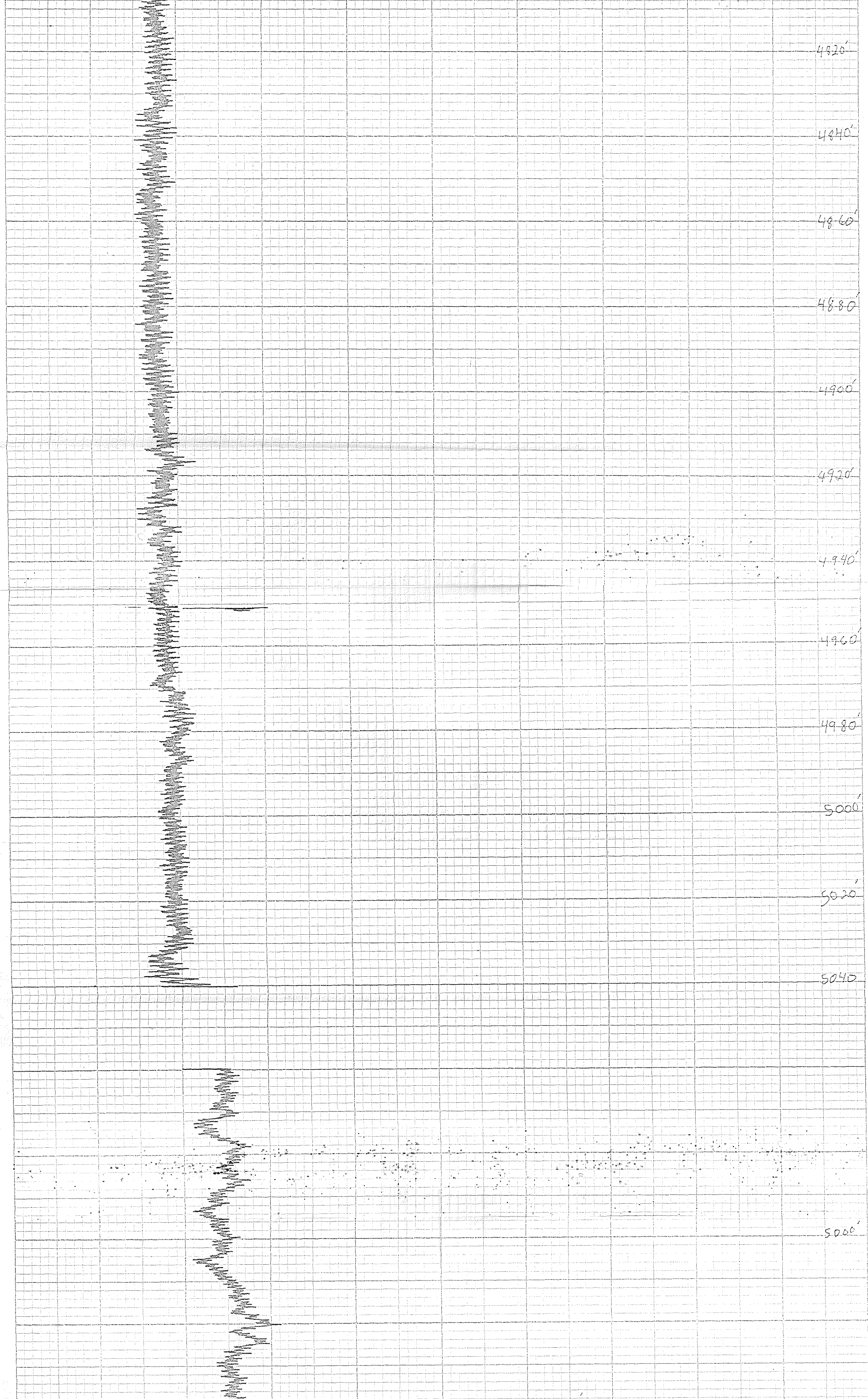
4780'

4800'

4820'

4840'





4820'

4840'

4860'

4880'

4900'

4920'

4940'

4960'

4980'

5000'

5020'

5040'

5000'

5000'

4920'

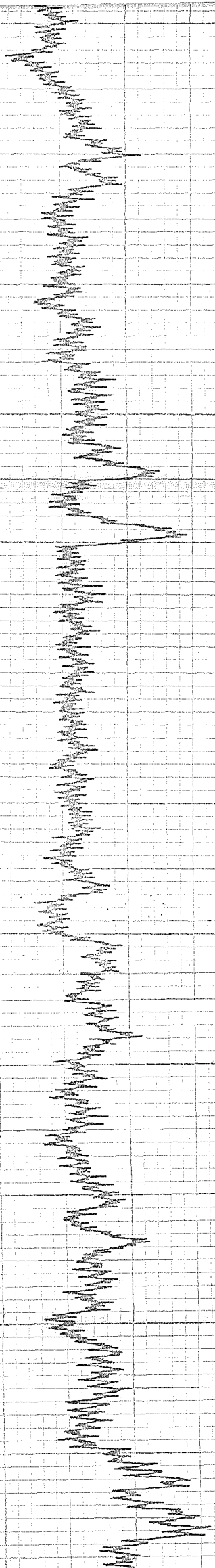
4820'

4800'

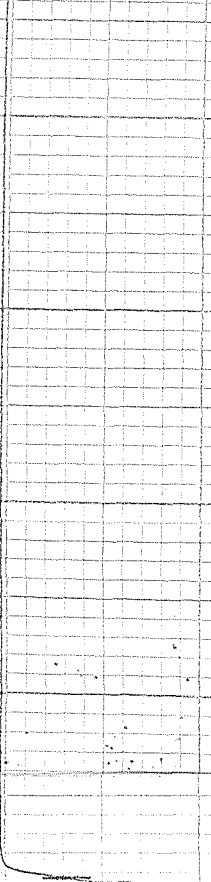
4780'

4760'

↑
40 ft/min
rate



1



4960

4940

5000

5020

5040

5040

5020

5000

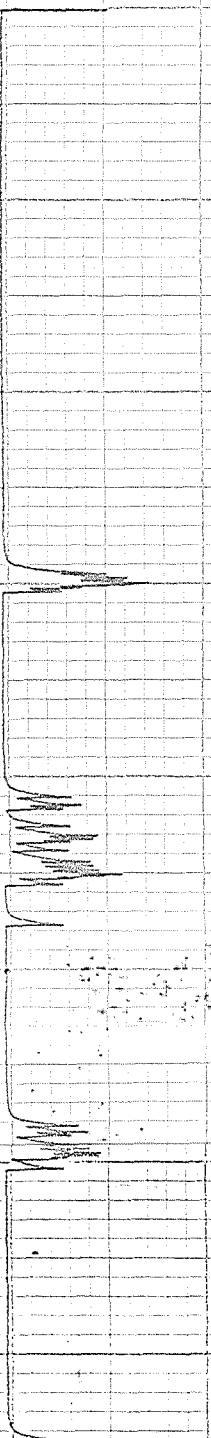
4980

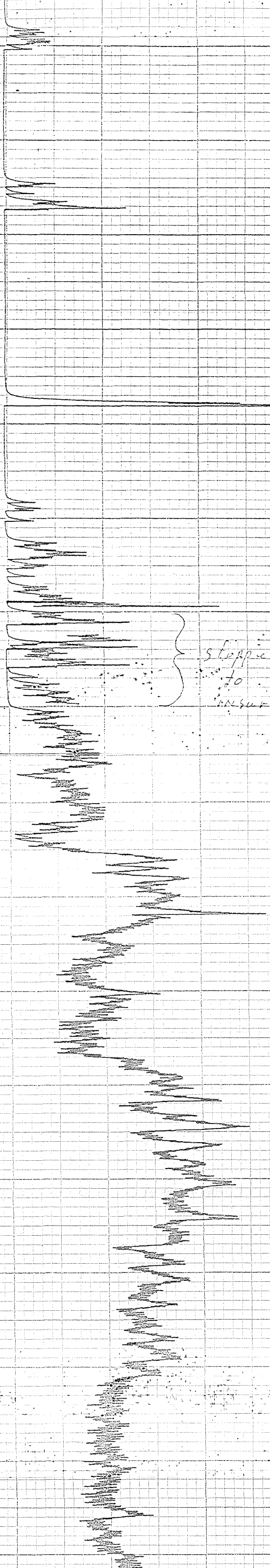
4960

4940

4920

4900





4920

4900

4880

4860

4840

4820

4800

stopped
to
ensure spinner operation
1/10

4780

4760

4740

4720

4700

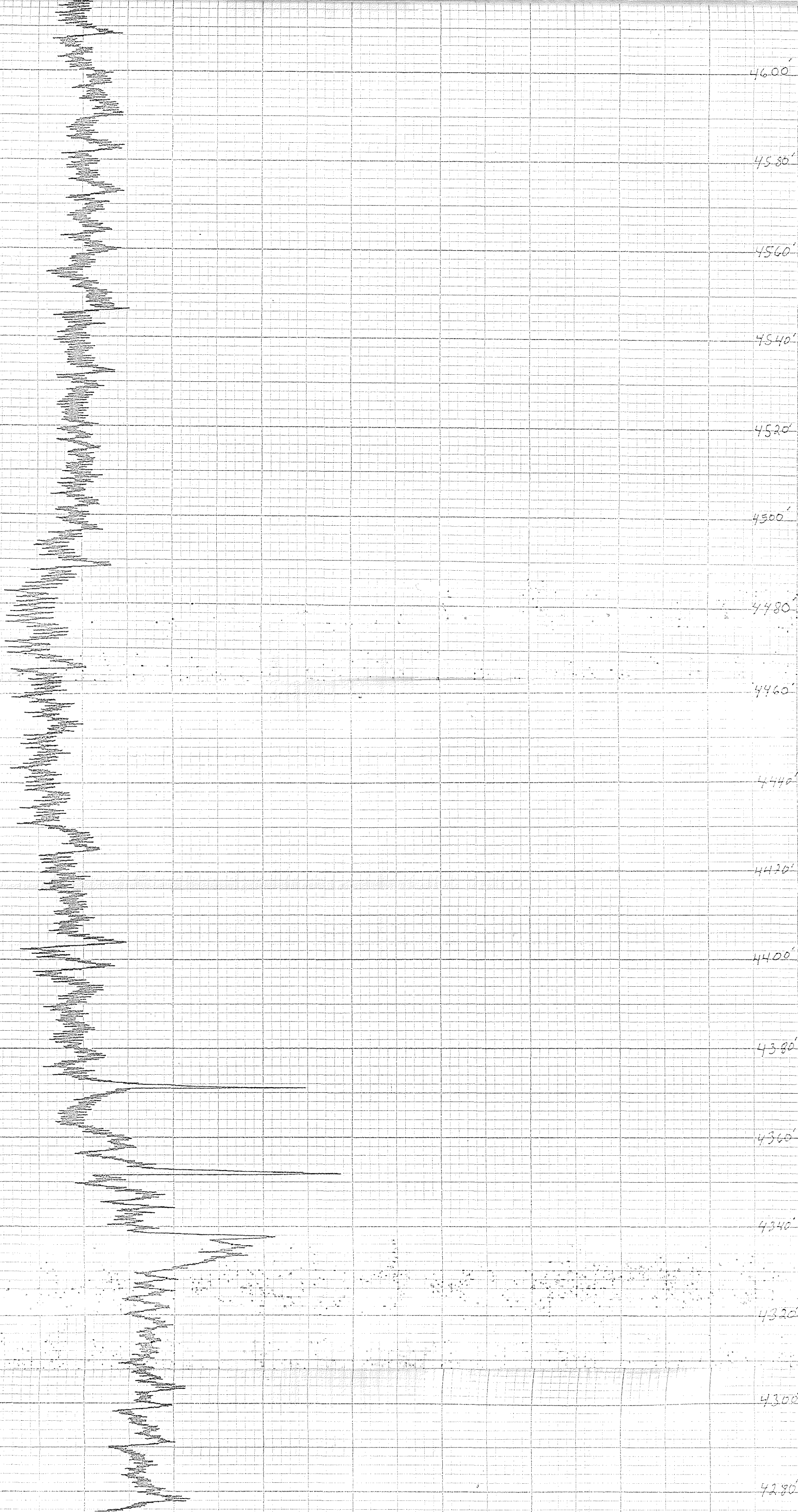
4680

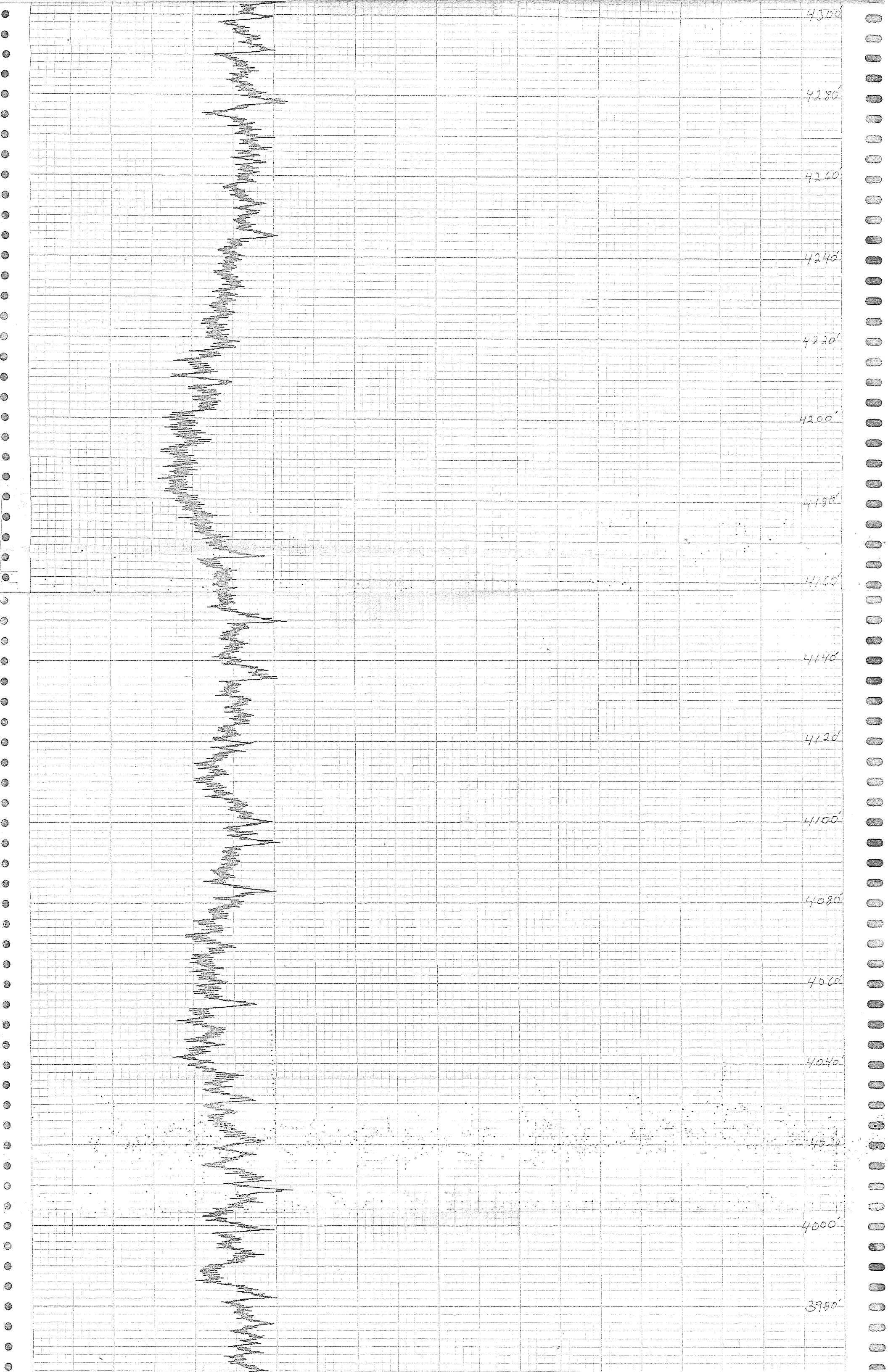
4660

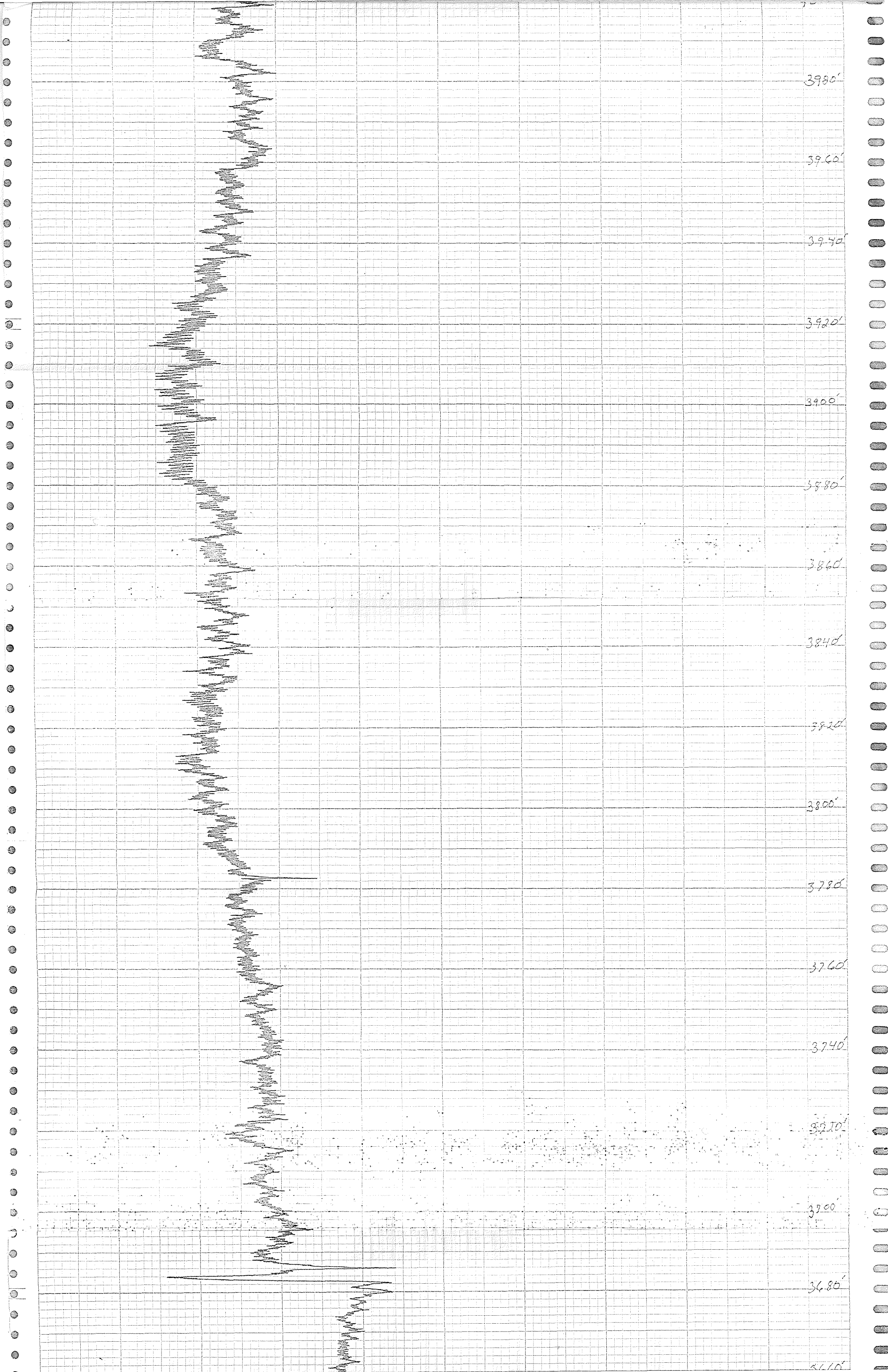
4640

4620

4600







↑
Pulses

↑
0 ft/min
Rate

1 1/4"
CASING

↑
20 ft/min
Rate

11/8/82

11:25 am

RAGE # 1

SPINNER

JMT

