

GL02978 - 1

TEST 2C
RRGP-5
CONDUCTIVITY LOG "TRAILER"
DATE: 09/21-09/27/82

100 90 80 70 60 50 40 30 20 10 0



REORDER# 8386-40



07:30
M-137

5

PRINTED IN U.S.A.

100 90 80 70 60 50 40 30 20 10 0

0 10 20 30 40 50 60 70 80 90 100



0330

02:10

4

Chart
Hdly.

05:10

0121

9-27-82

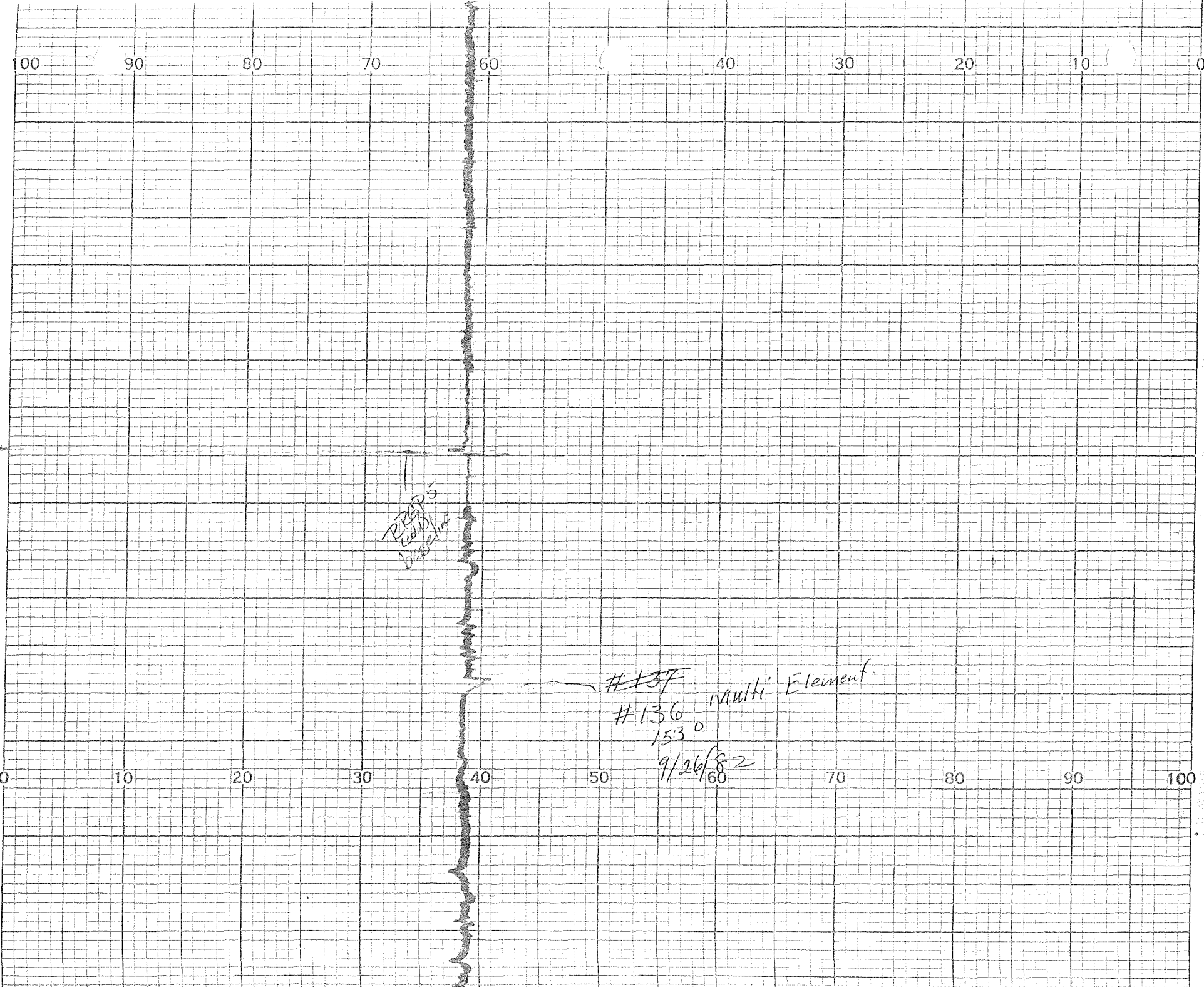
100 90 80 70 60 50 40 30 20 10 0

REORDER# 8386-40

0 10 20 30 40 50 60 70 80 90 100



PRINTED IN U.S.A.



CHICAGO LINOS 60648

13.39
9/26/82

100 90 80 70 60 50 40 30 20 10 0

REORDER# 8386-40

0 10 20 30 40 50 60 70 80 90 100

9/24/82
m=3.0

9

9/26/86

07:30

PRINTED IN U.S.A.



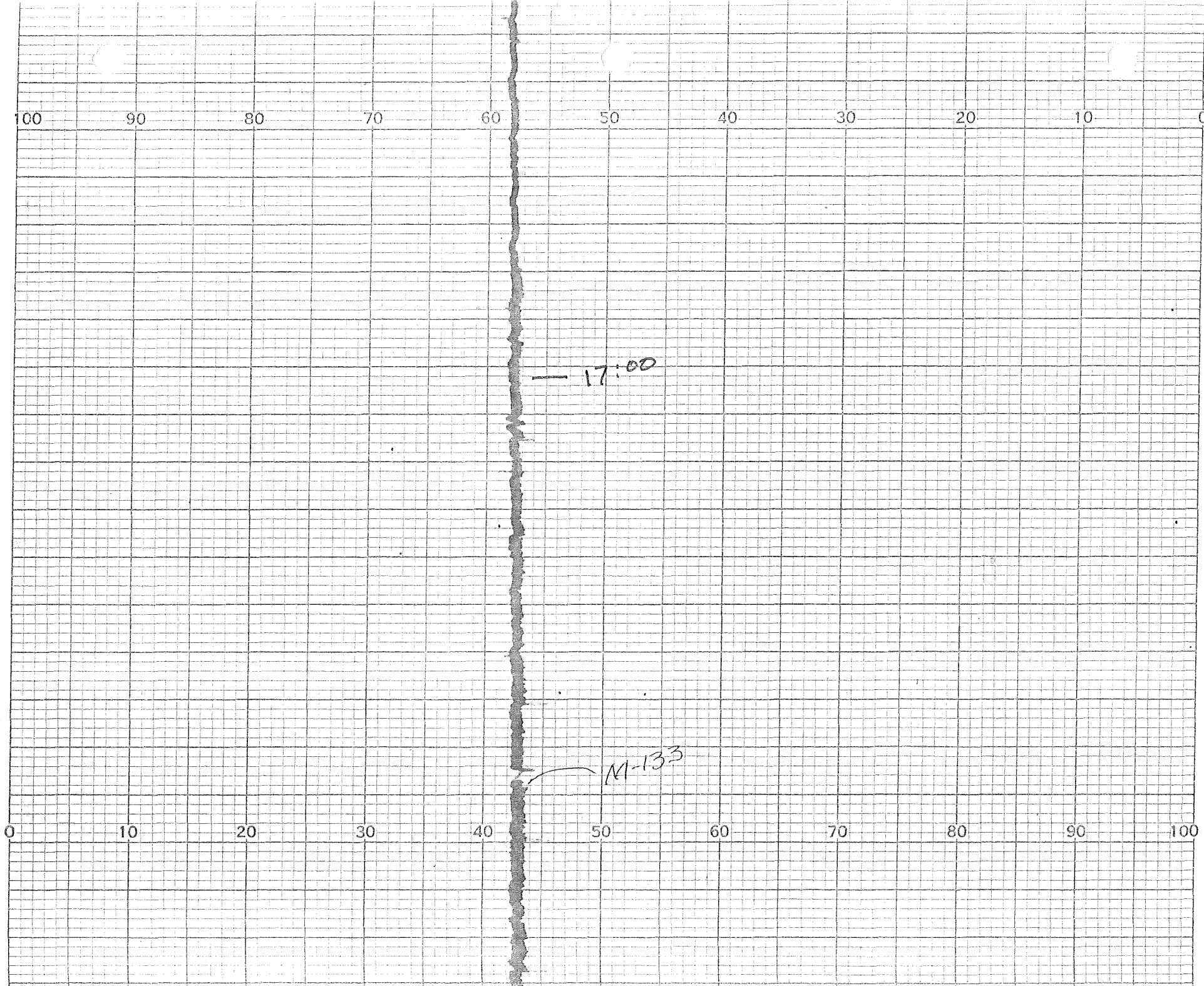
100 90 80 70 60 50 30 20 10 0



~~00:22~~
00:22
9-26-82
RBC

REORDER# 8386-40

0 10 20 30 40 50 60 70 80 90 100



100 90 80 70 60 50 40 30 20 10 0



M-132
11:26

0 10 20 30 40 50 60 70 80 90 100

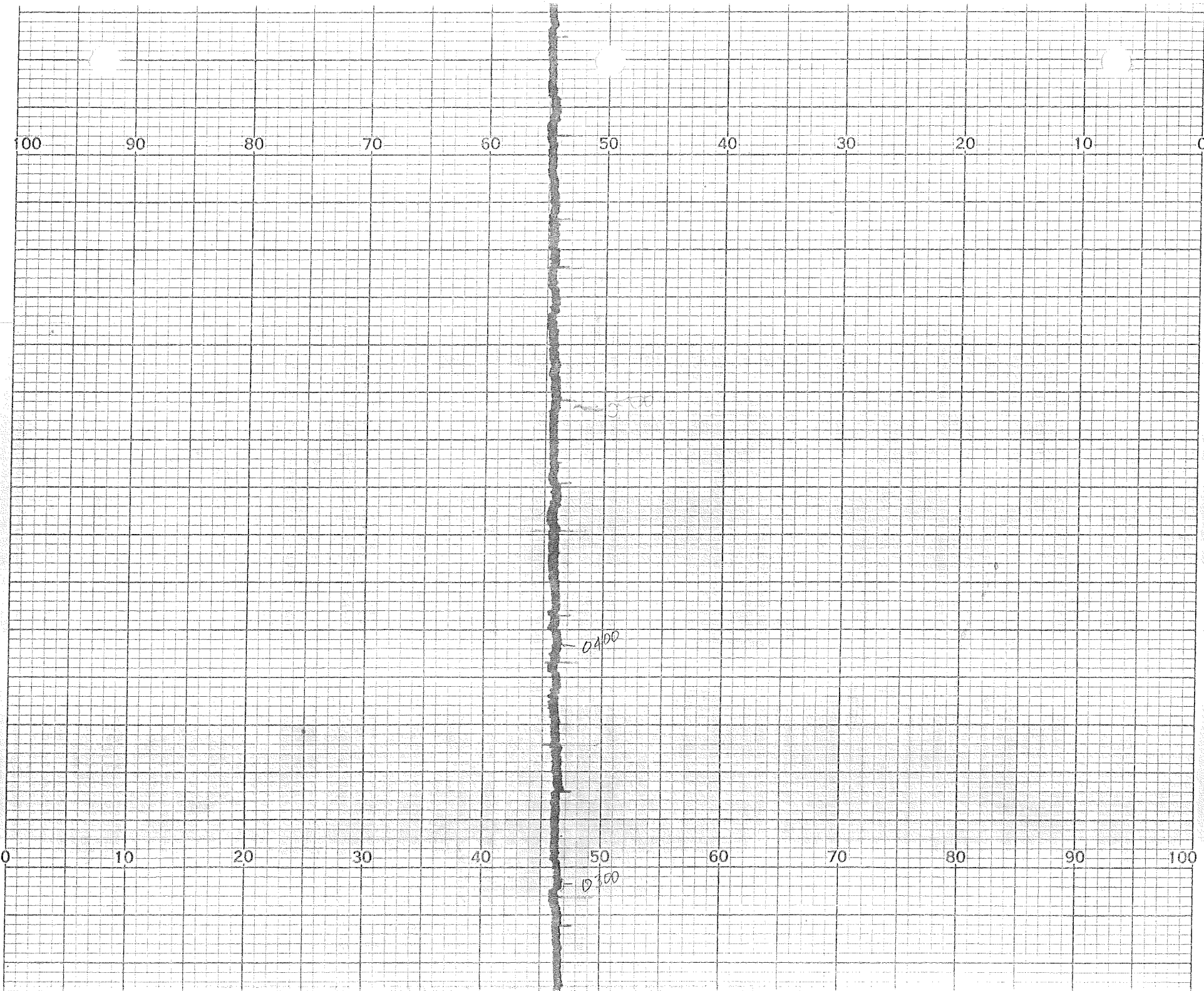
0527
9/25/82

5cm/wr

a little late only
sample was taken

13
water
sample
sky

PRINTED IN U.S.A.



0 10 20 30 40 50 60 70 80 90 100

D 300

100 90 80 70 60 50 40 30 20 10 0

NO: 00

9/25/82

Conductivity
meter in
Trailer
TRGP-5

REORDER# 8386-40

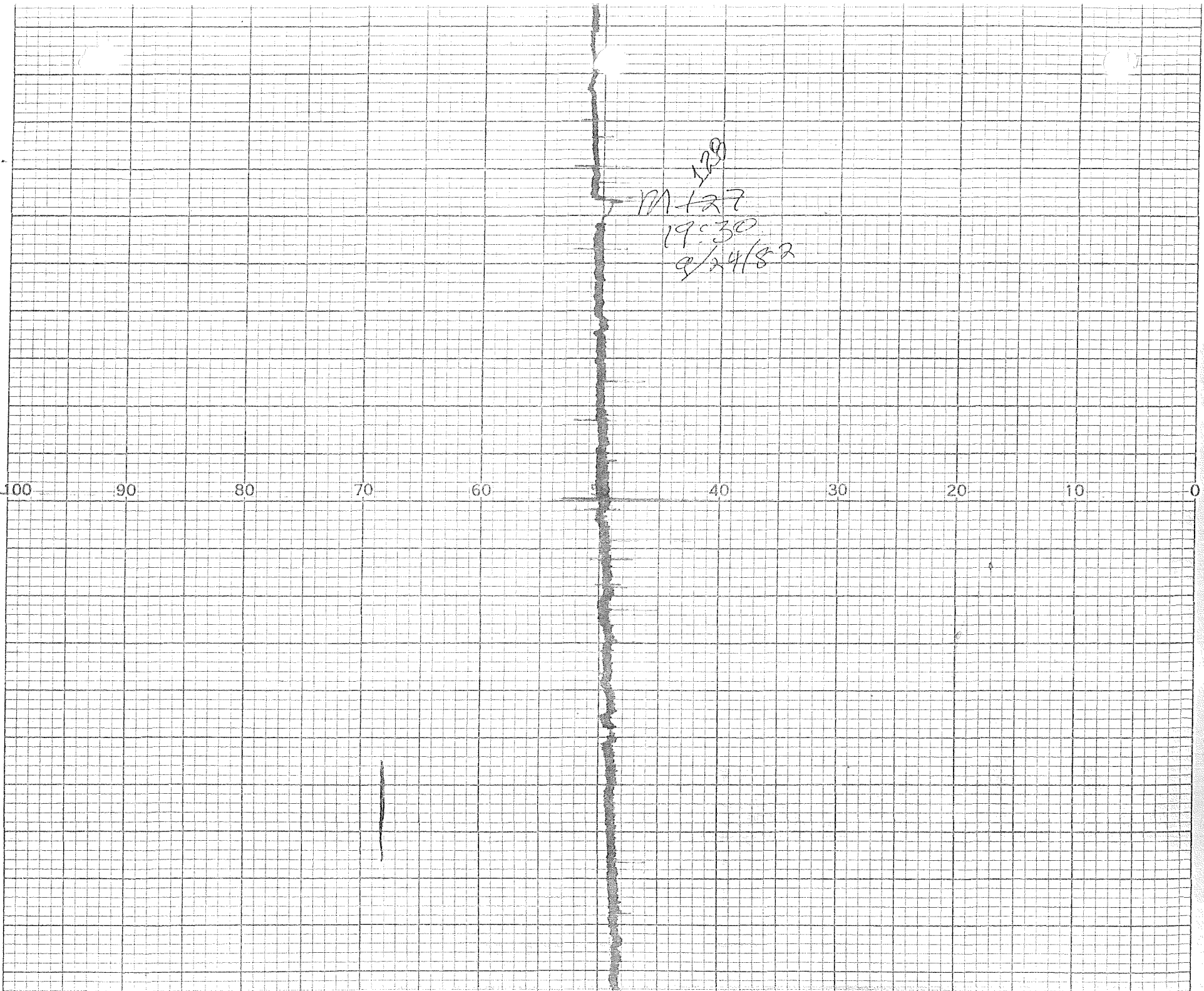
0 10 20 30 40 50 60 70 80 90 100

23/30

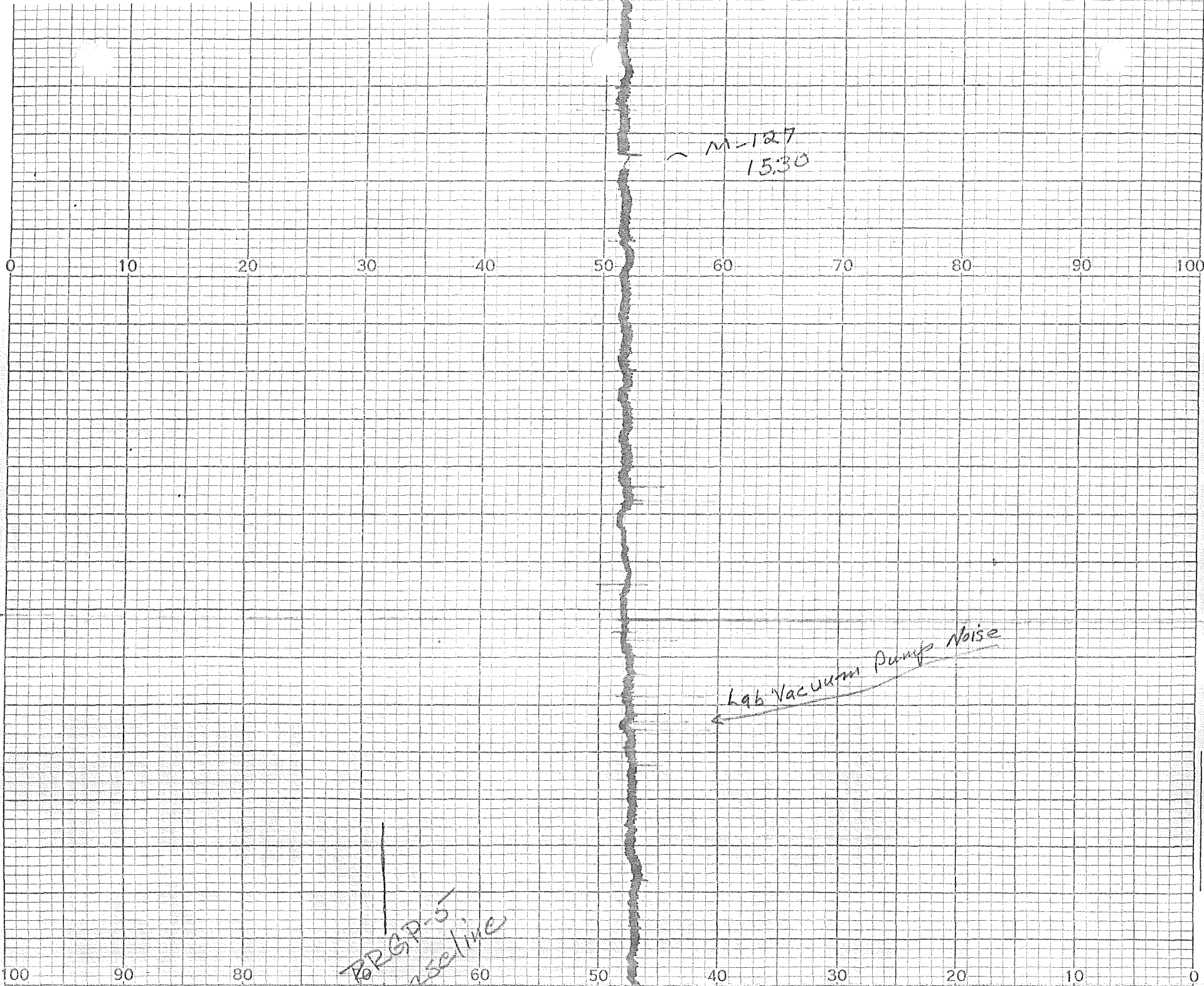
22/30

21/30

20/30



128
M-127
19030
9/24/82



M-127
1530

Lab Vacuum Pump Noise

RRGP-5
baseline

100 0 80 60 50 40 30 20 10 0

RRGP
baseline

M-126

Radio

M-125

Radio Noise

M-124

0923

0 10 20 30 40 50 60 70 80 90 100

RRGP
baseline

0922

M-123
0830
9/24/82

0740

M-122

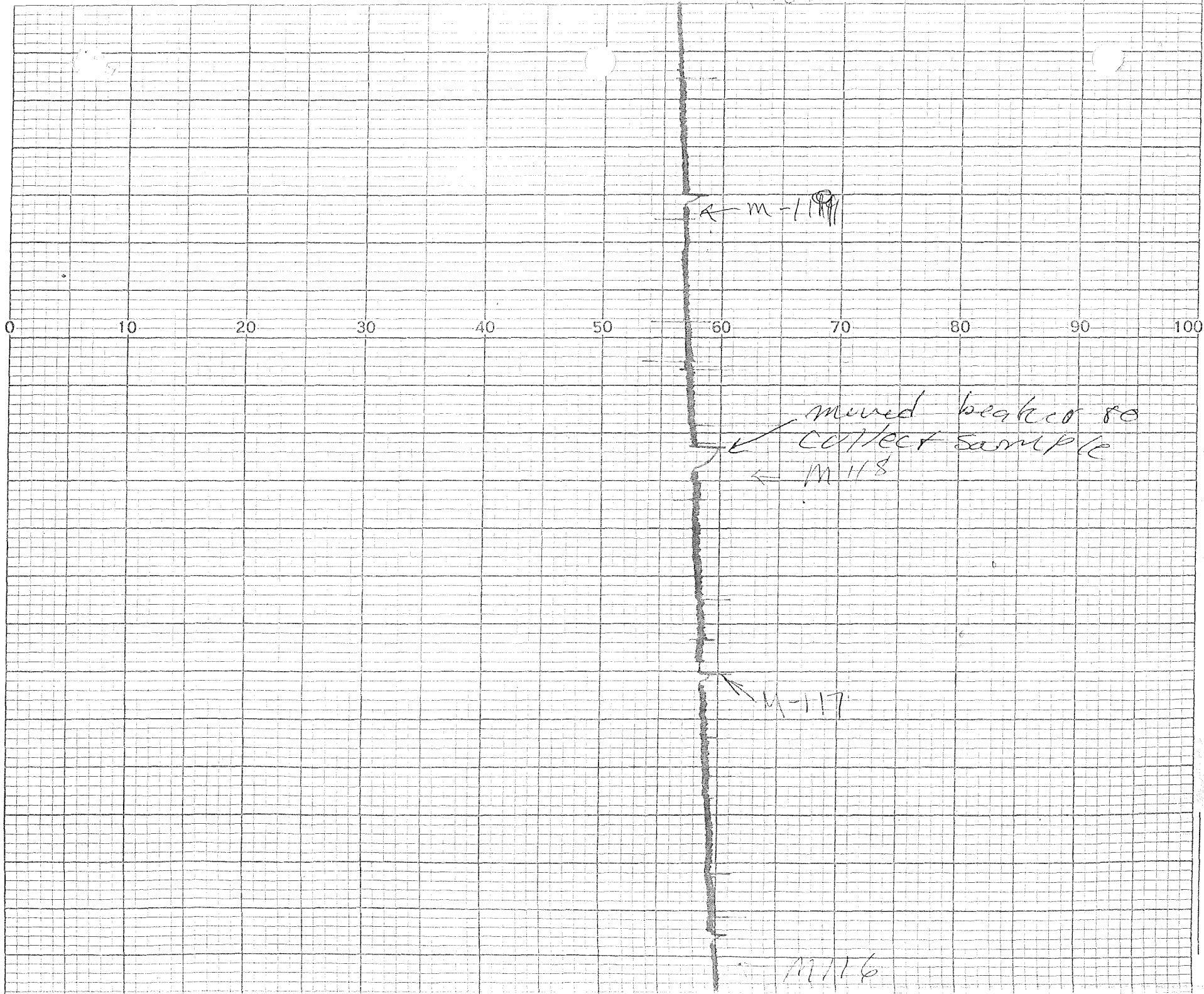
electric
heaters on

100 90 80 70 60 50 40 30 20 10 0

M-121

M-120

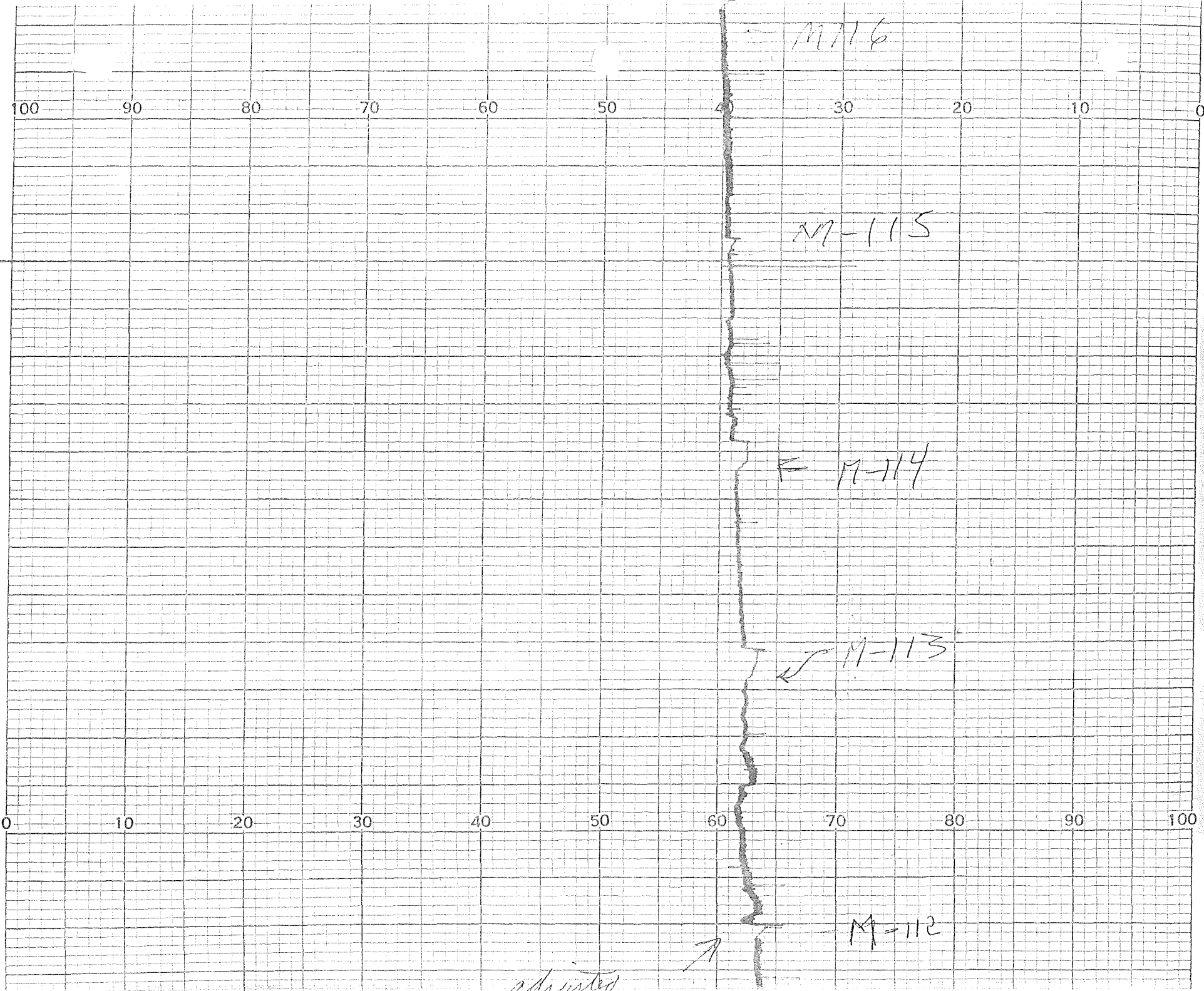
UTLALU, LITUAJ D0242



R W

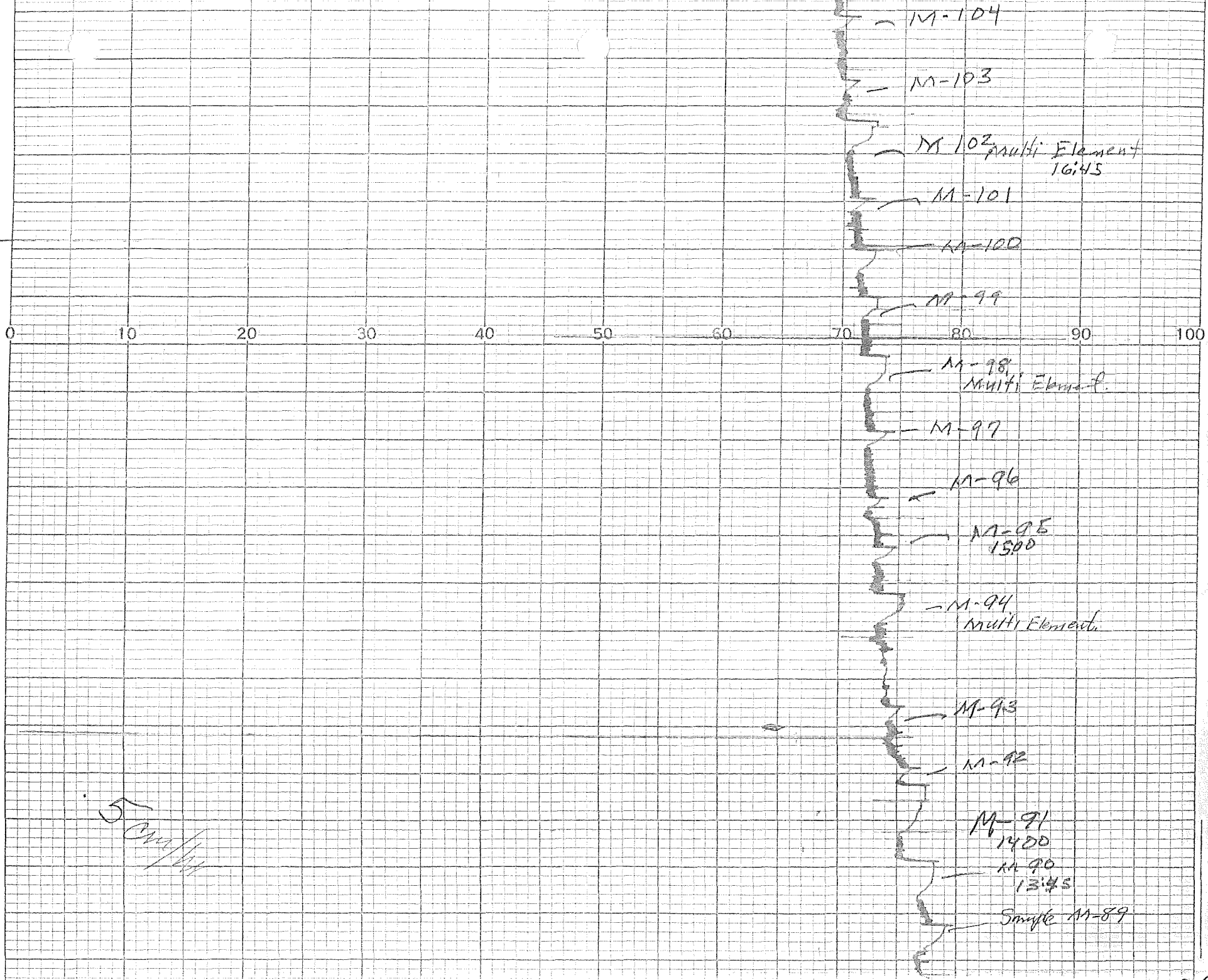


REORDER# 8386-40



stimulated

CHICAGO, ILLINOIS 60648



M-104

M-103

M-102 Multi Element
16:45

M-101

M-100

M-99

M-98 Multi Element

M-97

M-96

M-95
15:00

M-94 Multi Element

M-93

M-92

M-91
14:00

M-90
13:45

Sample M-89

5 Cm / M

REORDER# 8386-40

100 90 80 70 60 50 40 30 20 0

Sample 10-85
13:15

Sample 10-87

12:45 Multi
Sample 81-87

M 85 B
12:36

M-85
12:15

M 83
11:15

Backflow @ 10:30
9-23-82

Injection
Stopped @ 10:31
9-23-82

Tracers
10:25
9-23

0 10 20 30 40 50 60 70 80 90 100

Chart Speed

Chord
SCM/Ar

842

0833-37

Changed
Filter

Dye

Sample 07:20

Dye

Sample 10

Dye Sample
06:30

Dye Sample
06:15

Changed
Filter

100

90

80

70

60

50

40

30

20

0

100 90 80 70 60 50 40 30 20 10 0

0 10 20 30 40 50 60 70 80 90 100

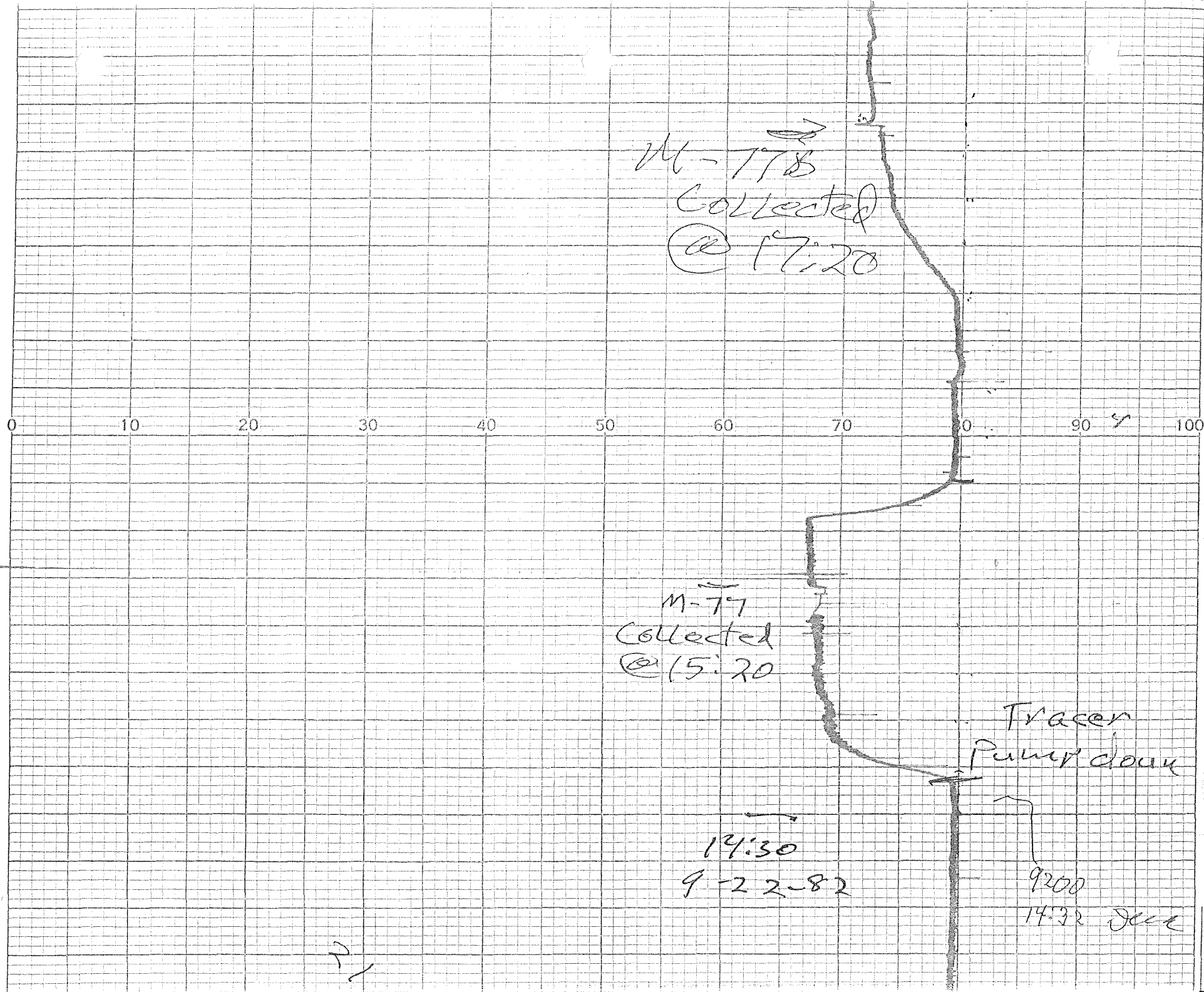
S+I Adjustment
on Pumping
Rate 90% ^{Down} to 80%
on Insector pumps
S.K.

Sample M-79
2320
S.K.

100 90 80 70 60 50 40 30 20 10 0

28:54 → 53

M-77C
① 18:20



M-77B
 Collected
 @ 17:20

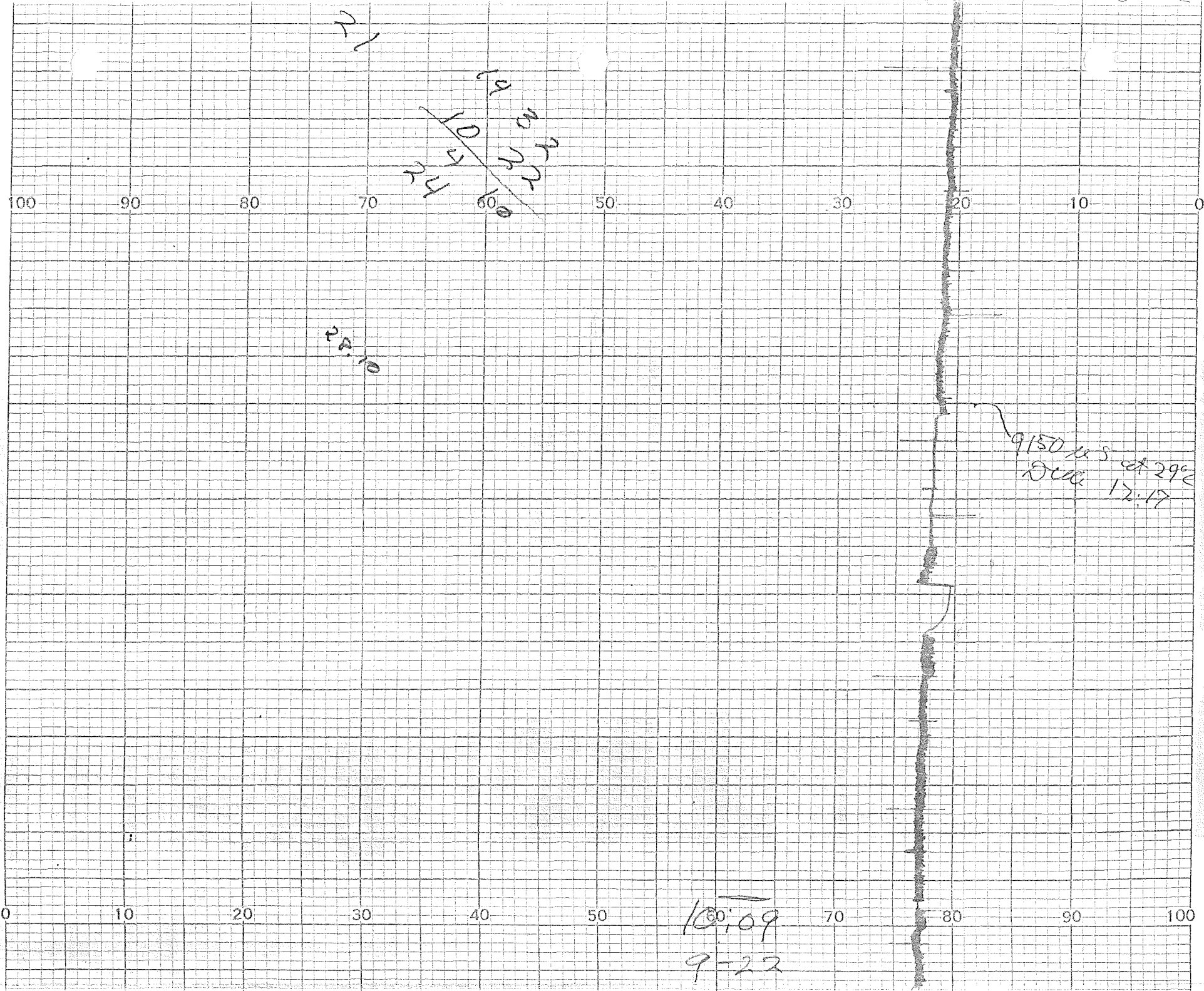
M-77
 Collected
 @ 15:20

Tracer
 Pump down

14:30
 9-22-82

9200
 14:32 Dec



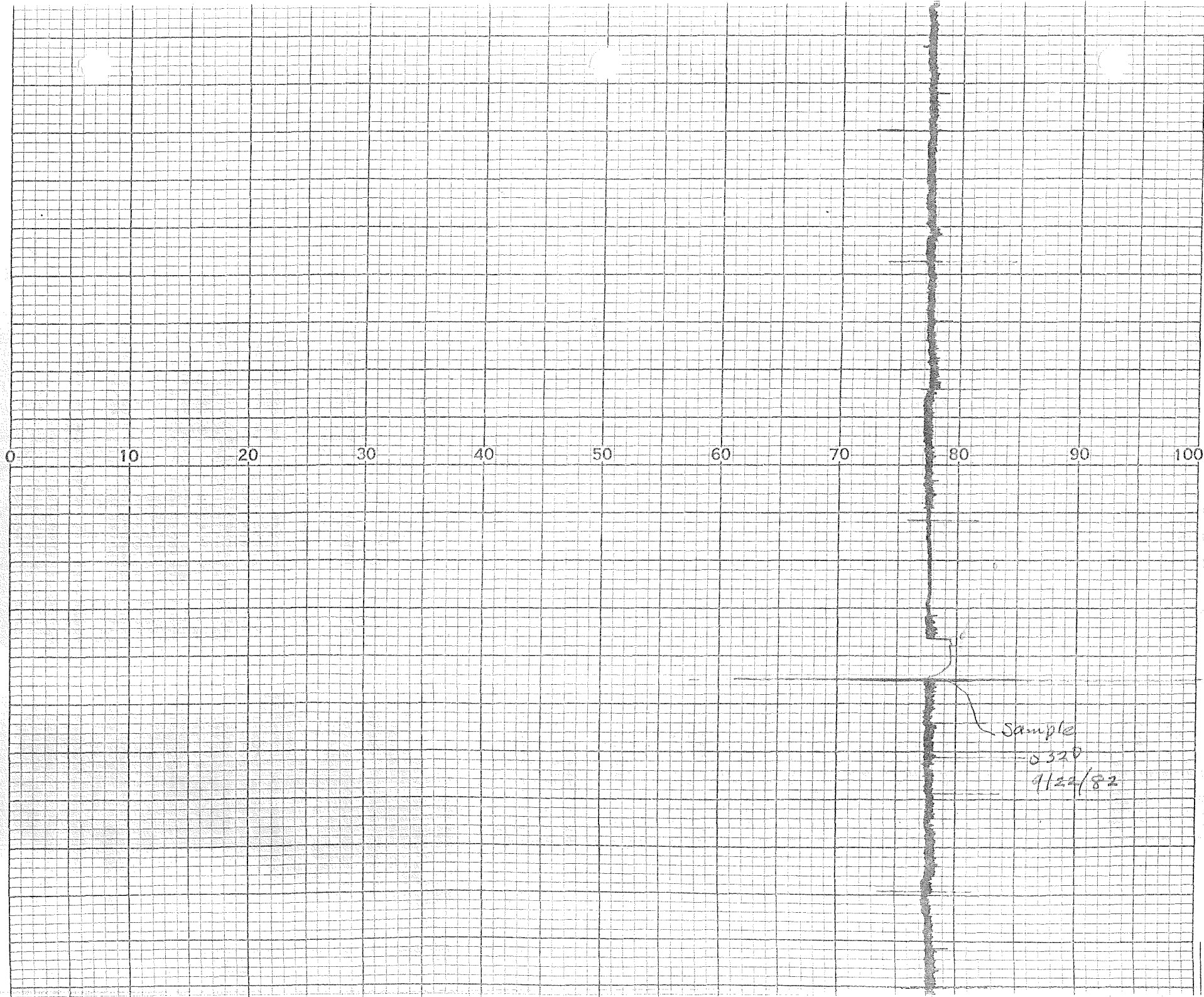


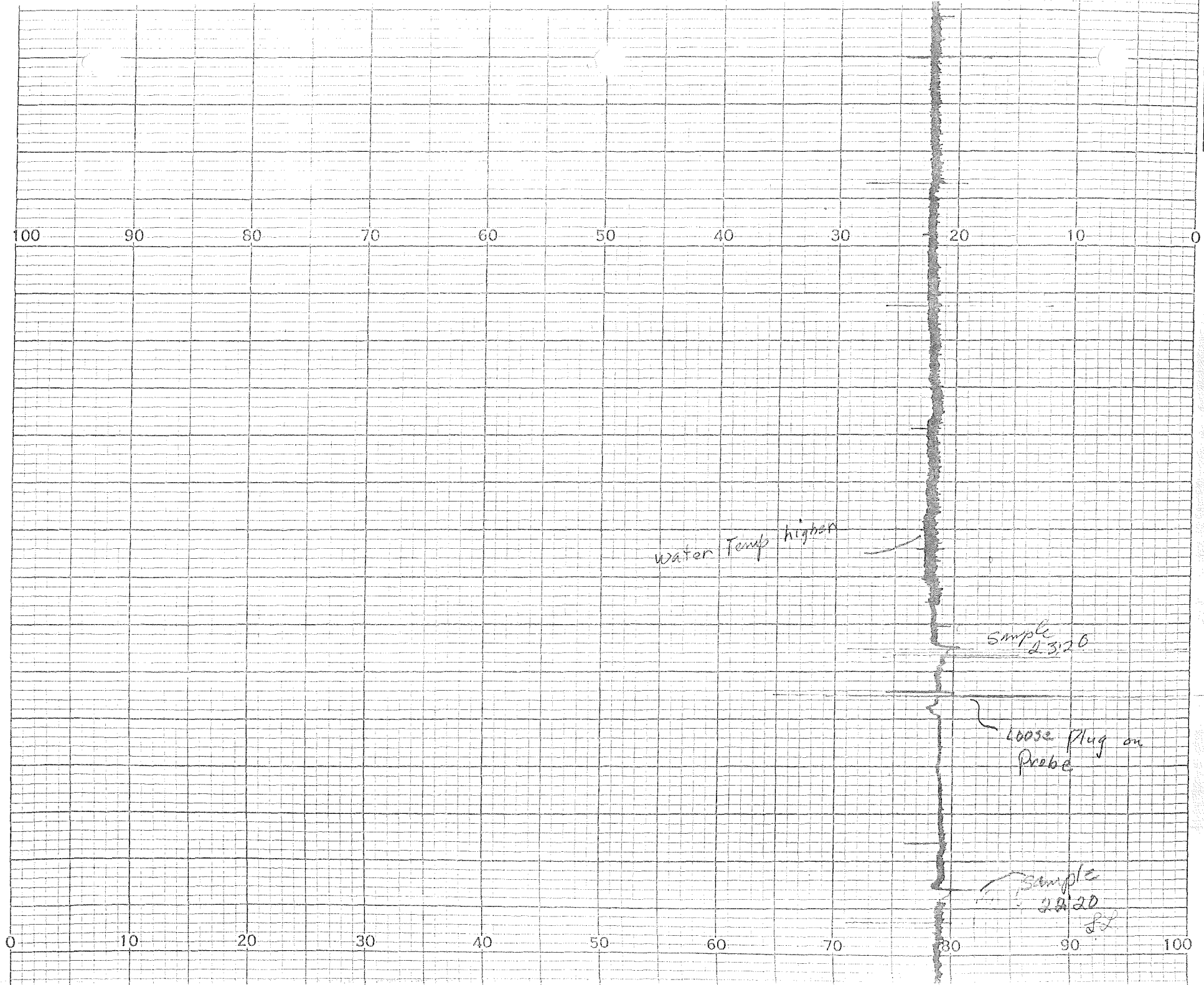
9-22

100 90 80 70 60 50 40 30 20 10 0

9200 μs (59°C)
08:40 Jue

sample
07:20







9-21-82

0 10 20 30 40 50 60 70 80 90 100

Tracer
Trap
Cleaned

Tracer
plugget
Trap ?

Trap?

100 90 80 70 60 50 40 30 20 10 0

Irregularities
may be from
line of
Tokole
Bottom
12:00

9200 11:32
1250
1318 2nd

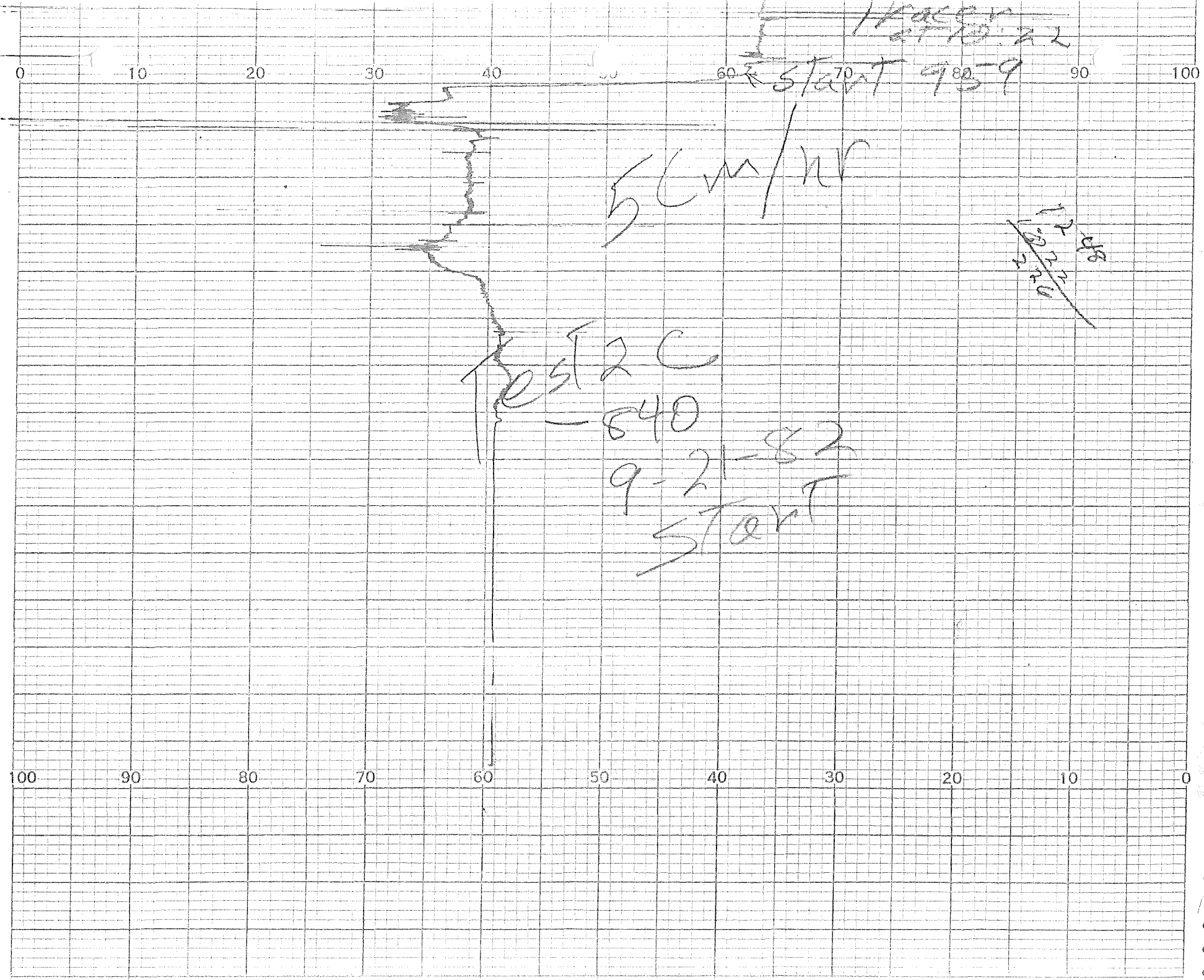
9900 11:32
10,100 11:23

Conductivity 9650ys → started

Tracer
at 10:22

10182 MCB

0 10 20 30 40 50 60 70 80 90 100



0 10 20 30 40 50 60 70 80 90 100

Test 2C
Trailer Conductivity
Part 1

6

17