



Gamma Ray Neutron

FILE NO. **611**

COMPANY GEOTHERMAL KINETICS SYSTEMS CORPORATION

WELL POWER RANCHES #2

FIELD POWER GEOTHERMAL PROSPECT

COUNTY MARICOPA STATE ARIZONA

LOCATION: 1980' S. & 660' W. OF THE N. E. CORNER SEC. 18

Other Services: IEL BHCAL

SEC 1 TWP 2 S RGE 6 E

Permanent Datum GL Elev. 1336

Log Measured from KB 20.0 Ft. Above Permanent Datum

Drilling Measured from KB

Elevations: KB 1356, DF -, GL 1336

| | | |
|------------------------|------------------|------------------|
| Date | 6-11-73 | 6-23-73 |
| Run No. | ONE | TWO |
| Type Log | GRAMMA RAY/NEUT. | GRAMMA RAY/NEUT. |
| Depth-Driller | 7000 | 9147 |
| Depth-Logger | 6944 | 9125 |
| Bottom Logged Interval | 6942 | 9122 |
| Top Logged Interval | 415 | 6942 |
| Type Fluid in Hole | WATER | WATER |
| Salinity Ppm Cl. | - | - |
| Density Lb./Gal. | - | - |
| Level | - | 420 |
| Max. Rec. Temp. Deg. F | 175 | 248 |
| Opr. Rig Time | 6 HRS. | 4 HRS. |
| Recorded By | SNEED | SNEED |
| Witnessed By | MR. AUSTIN | MR. AUSTIN |

| Run No. | Bore Hole Record | | | | Casing Record | | | |
|---------|------------------|------|------|--------|---------------|---------|------|--|
| | Bit | From | To | Size | Wgt. | From | To | |
| 1 | 8 1/2 | 5400 | 7000 | 13 3/8 | | SURFACE | 2700 | |
| | | | | 9 5/8 | | 2537 | 5400 | |

CONFIDENTIAL
 Release Date 8-23-75
FOR OFFICIAL USE ONLY

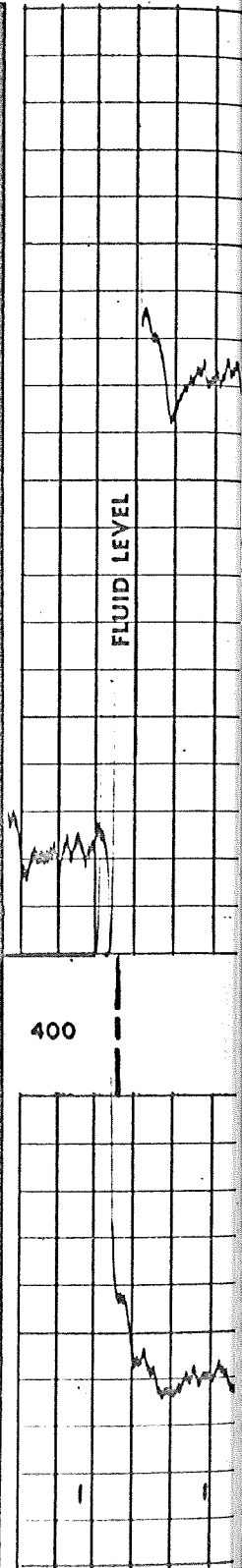
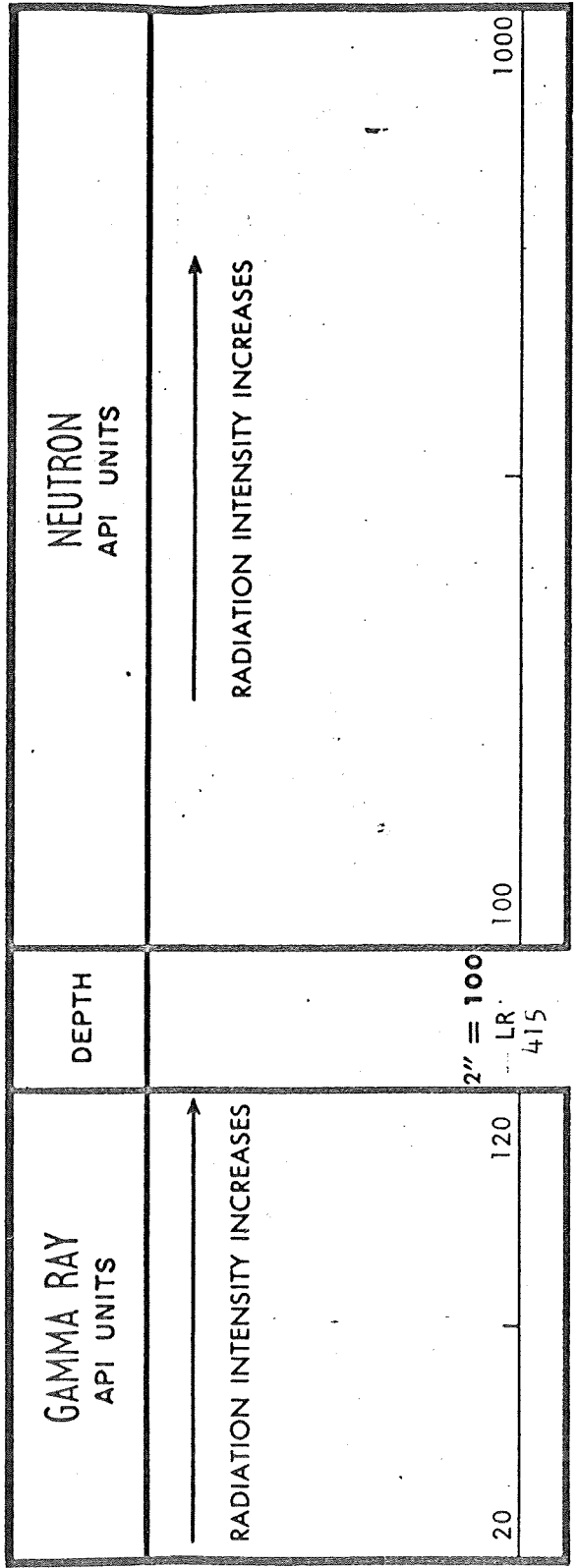
| Gamma Ray | | Equipment Data | | Neutron | |
|-----------|----------------|----------------|----------|------------|------------|
| Run No. | Tool Model No. | Run No. | Log Type | ONE | TWO |
| 1 | 2403 | ONE | NTN | NTN | NTN |
| 1 | 3 1/2 | TWO | 2403 | 2403 | 2403 |
| 2 | D6G4 | | D6G4 | 3 1/2 | 3 1/2 |
| | SCINT. | | SCINT. | D6N3 | D6N3 |
| | 4" | | 4" | SCINT. | SCINT. |
| | 7' | | 7' | 2.5" | 2.5" |
| General | | | | S17R5 | S17R5 |
| | HL6106 | | | 3704 | 3704 |
| | | | | 14.2" | 14.2" |
| | | | | AmBe | AmBe |
| | | | | 4.5 CURIES | 4.5 CURIES |

| Gamma Ray | | Neutron | |
|-----------|-----------------------------|------------------|----------------|
| Run No. | API G.R. Units Per Log Div. | Zero Div. L or R | Sens. Settings |
| 1 | 20 | 1L | 360 |
| 1 | 10 | 0 | 720 |
| 2 | 20 | 1L | 360 |

| Gamma Ray | | Neutron | |
|-----------|-----------|------------------|---------------------------|
| Run No. | T.C. Sec. | Zero Div. L or R | API N. Units Per Log Div. |
| 1 | 2 | 1L | 100 |
| 1 | 2 | 0 | 50 |
| 2 | 3 | 1L | 100 |

| Gamma Ray | | Neutron | |
|-----------|----------------|---------|----------------|
| Run No. | Speed Ft./Min. | Run No. | Equipment Used |
| 1 | 25 | ONE | TWO |
| 1 | 25 | 43030 | 43032 |
| 2 | 20 | 27845 | 27845 |

Remarks: PULLED 1000# IN CSG @ 1590 - 2880 - 4550 - 5050 - 5215



1000

100

2" = 100
LR
415

120

20

FLUID LEVEL

6 DIV ZERO SHIFT

1400

400

400

500

600

700

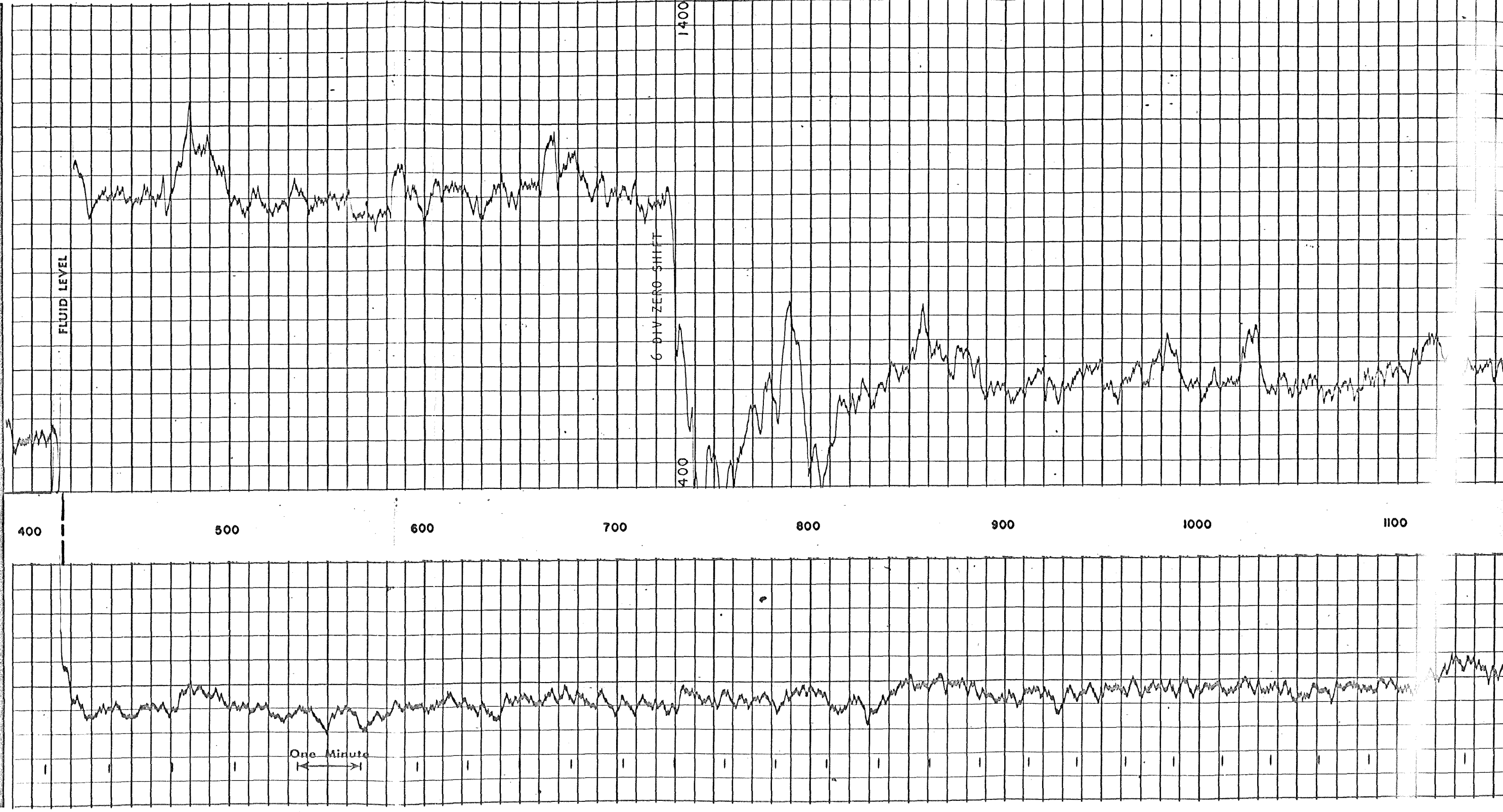
800

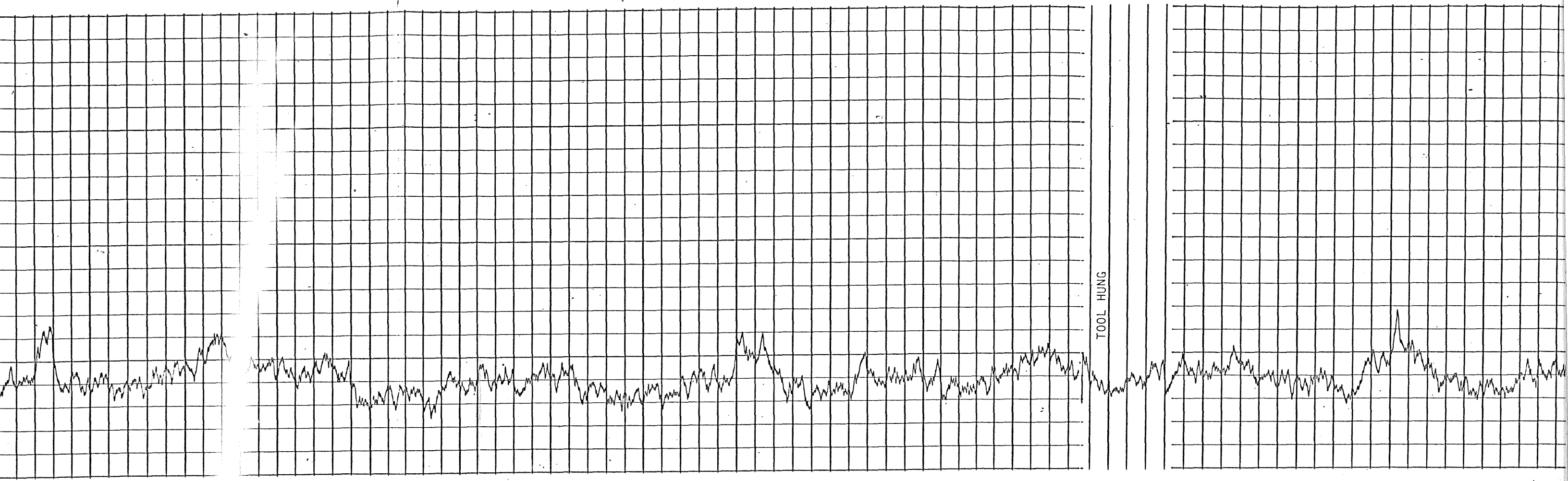
900

1000

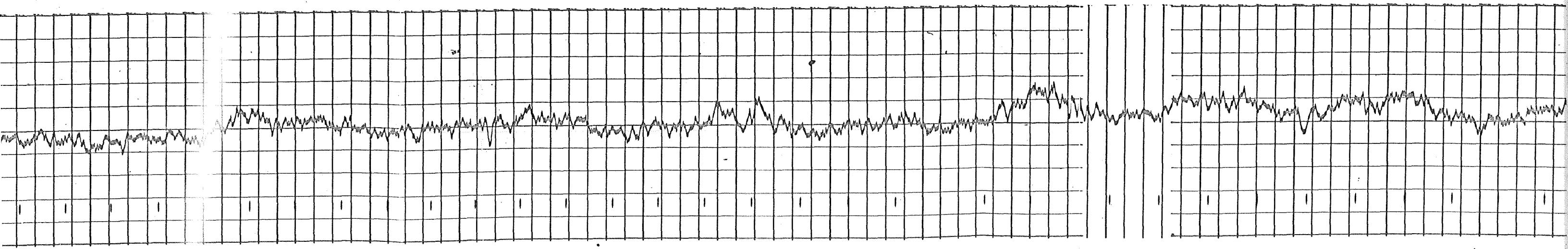
1100

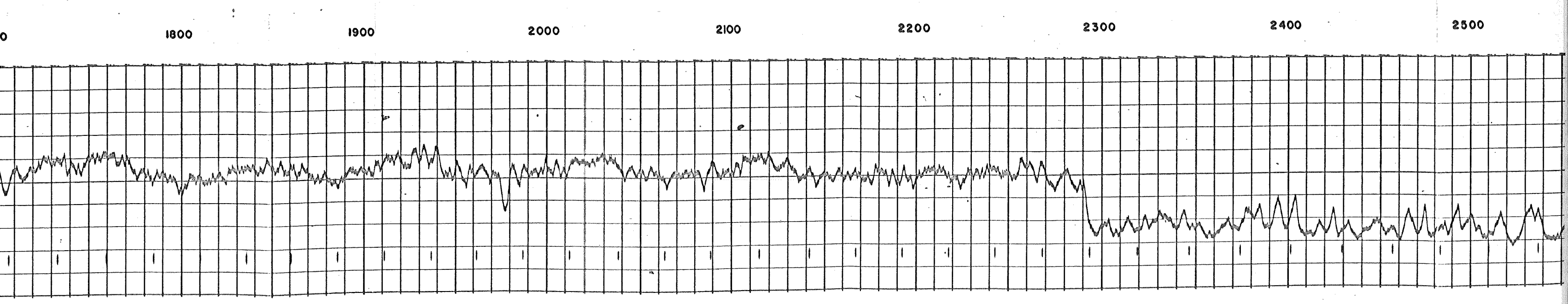
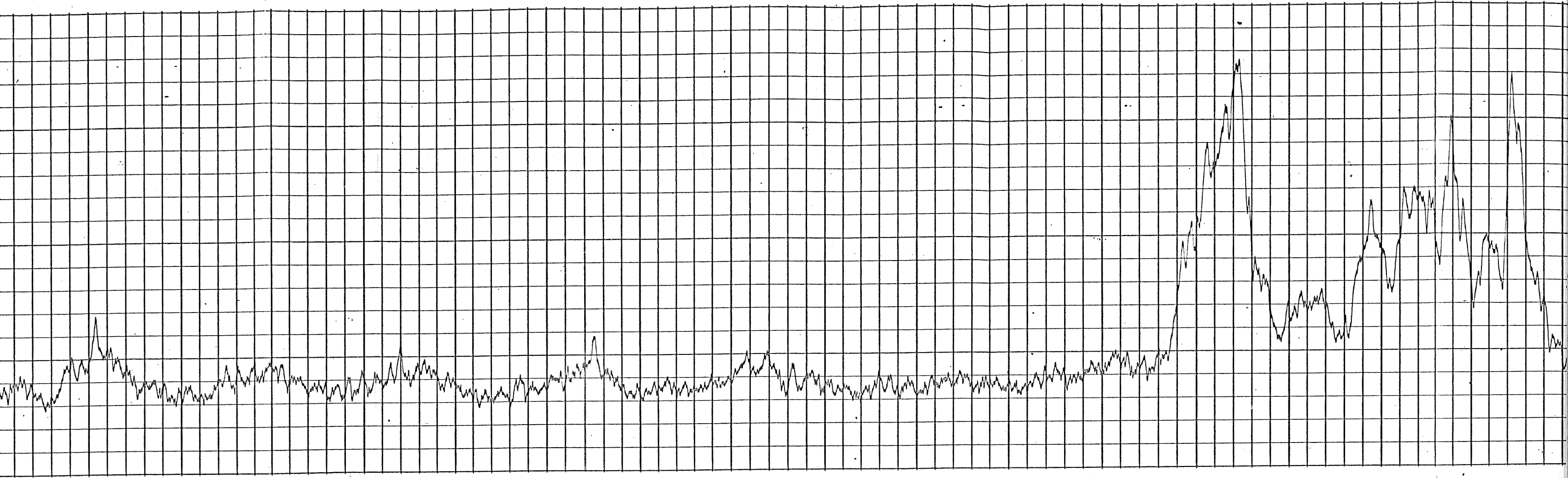
One Minute
← →

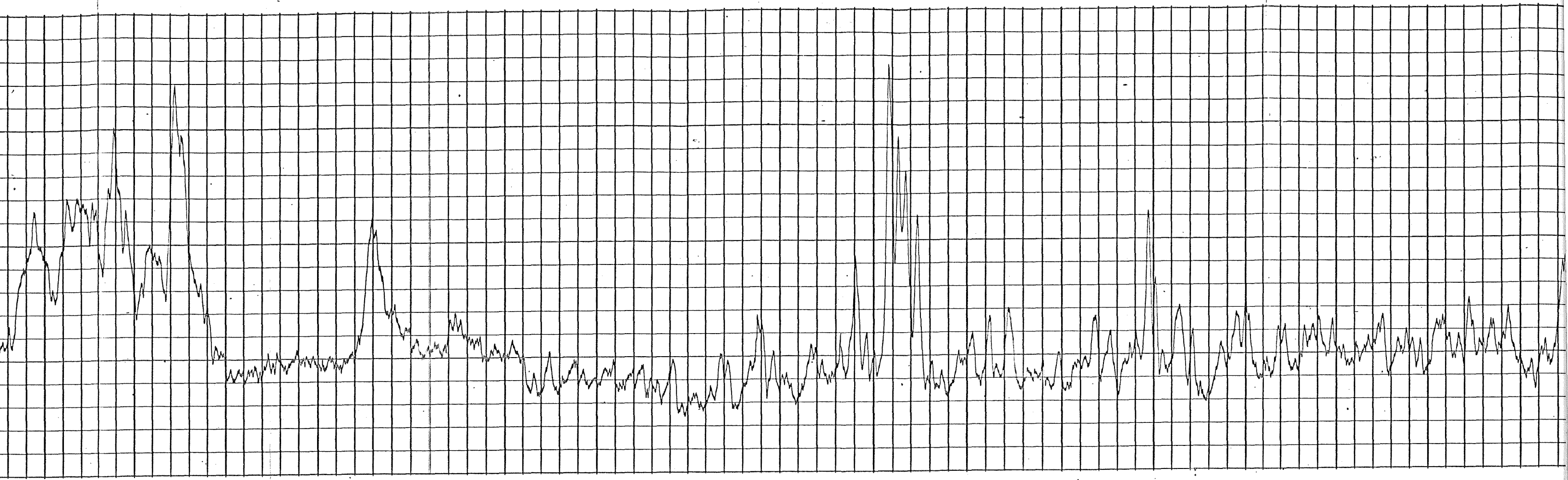




0 1100 1200 1300 1400 1500 1600 1700 1800







2500

2600

2700

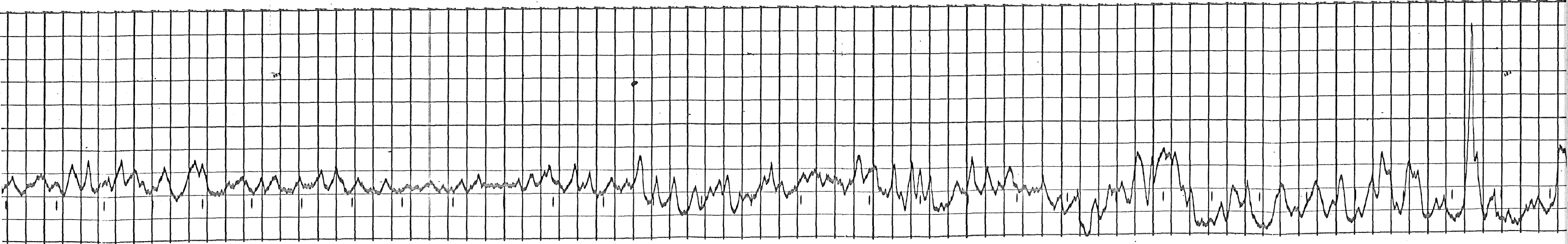
2800

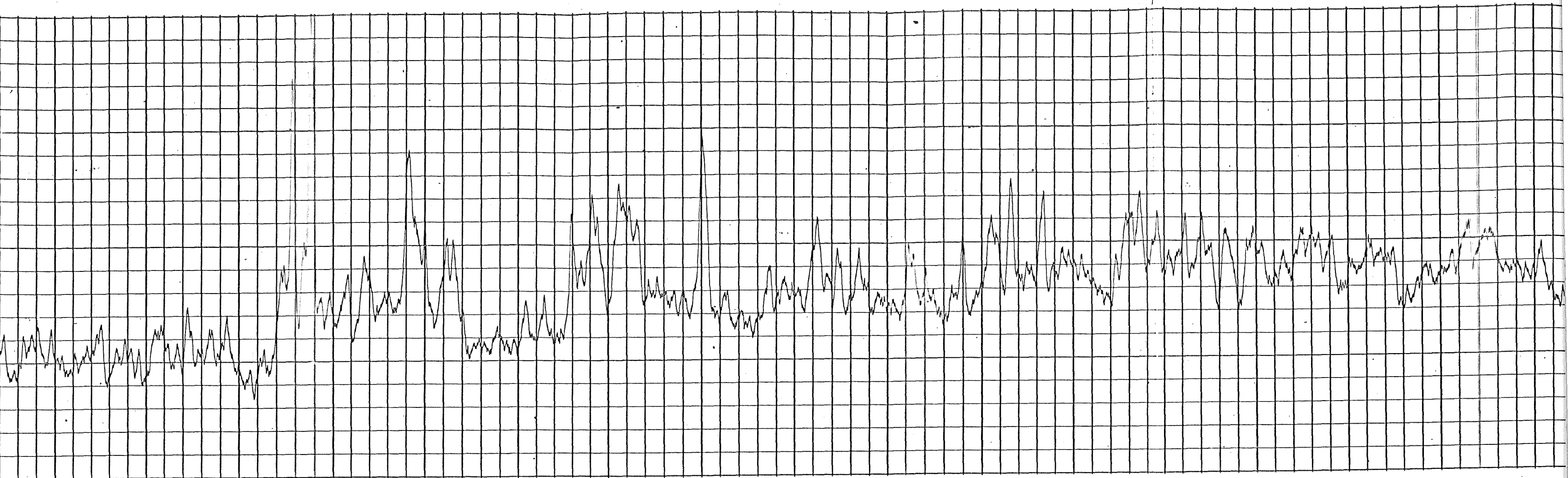
2900

3000

3100

3200





3200

3300

3400

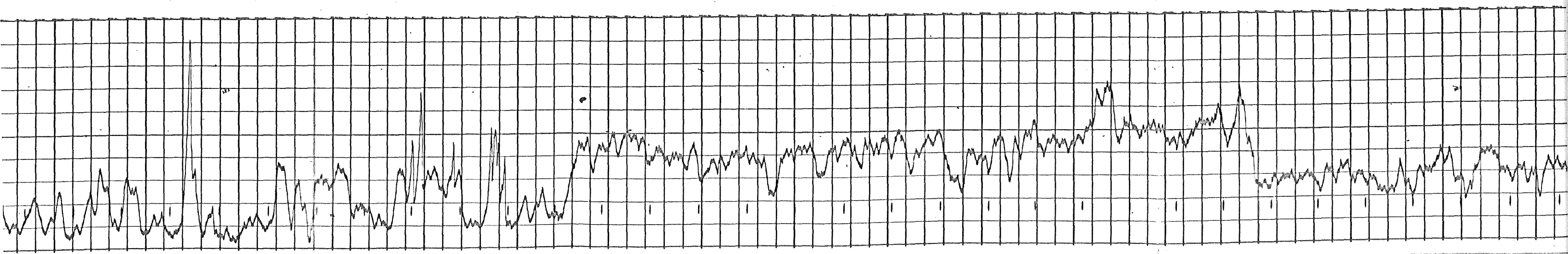
3500

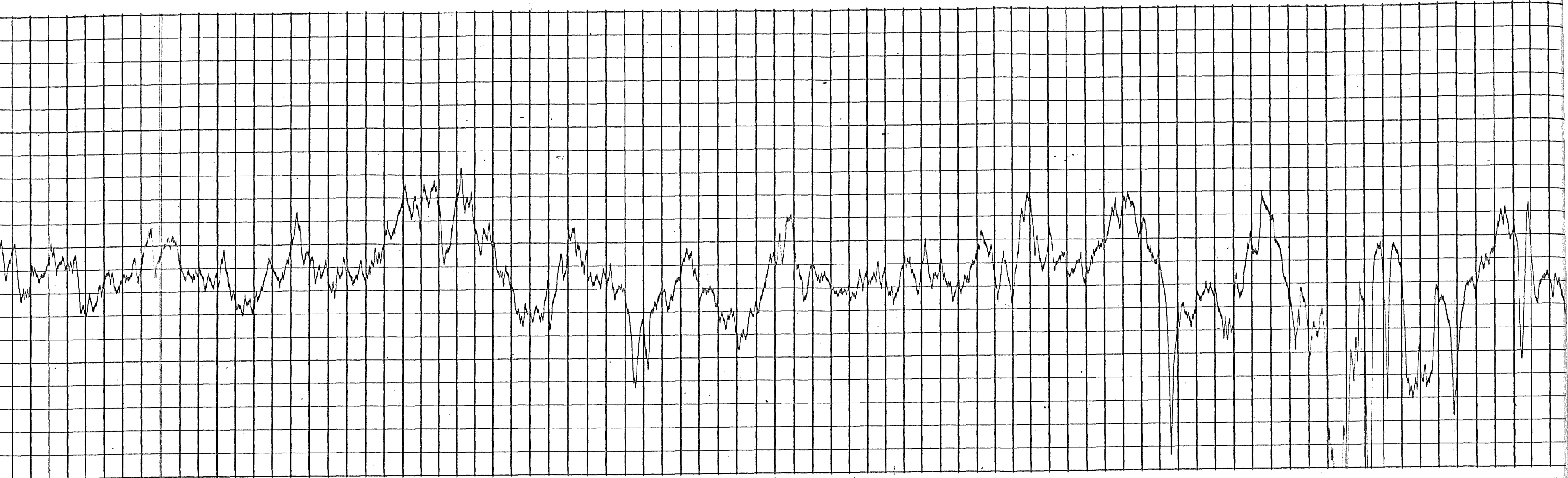
3600

3700

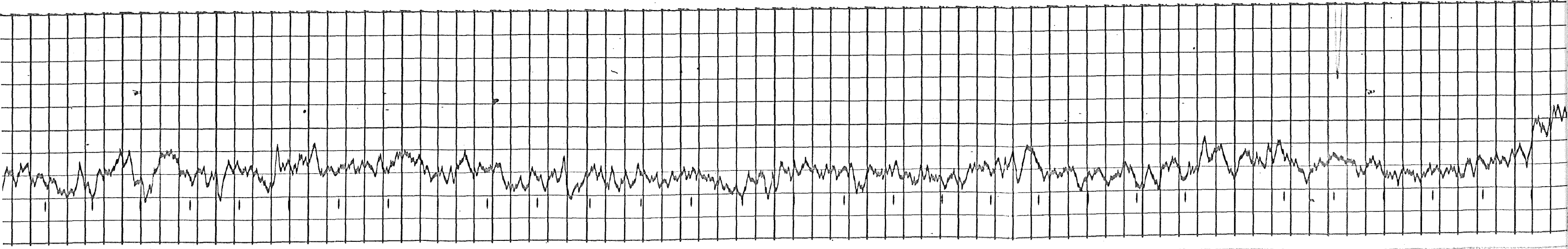
3800

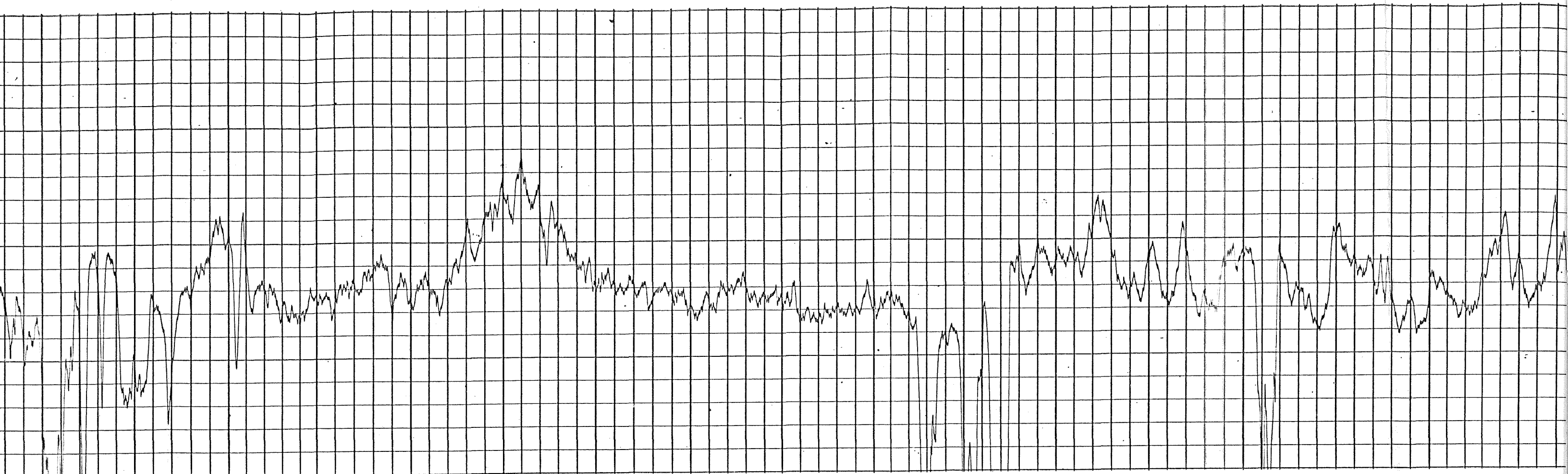
3900





3900 4000 4100 4200 4300 4400 4500 4600





4600

4700

4800

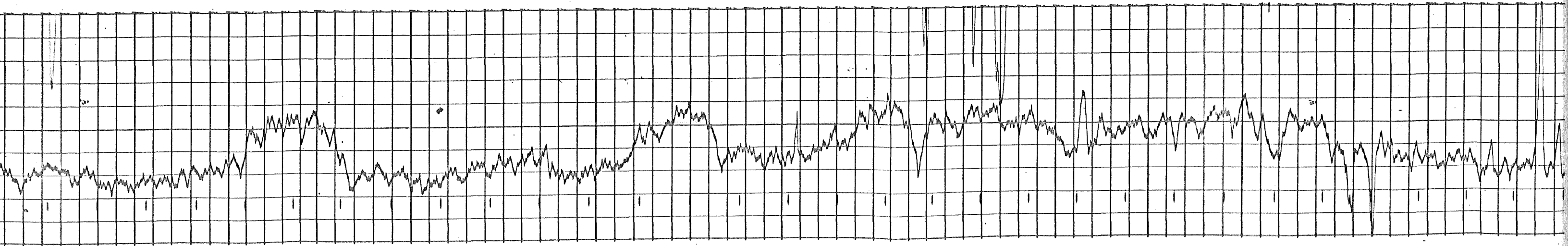
4900

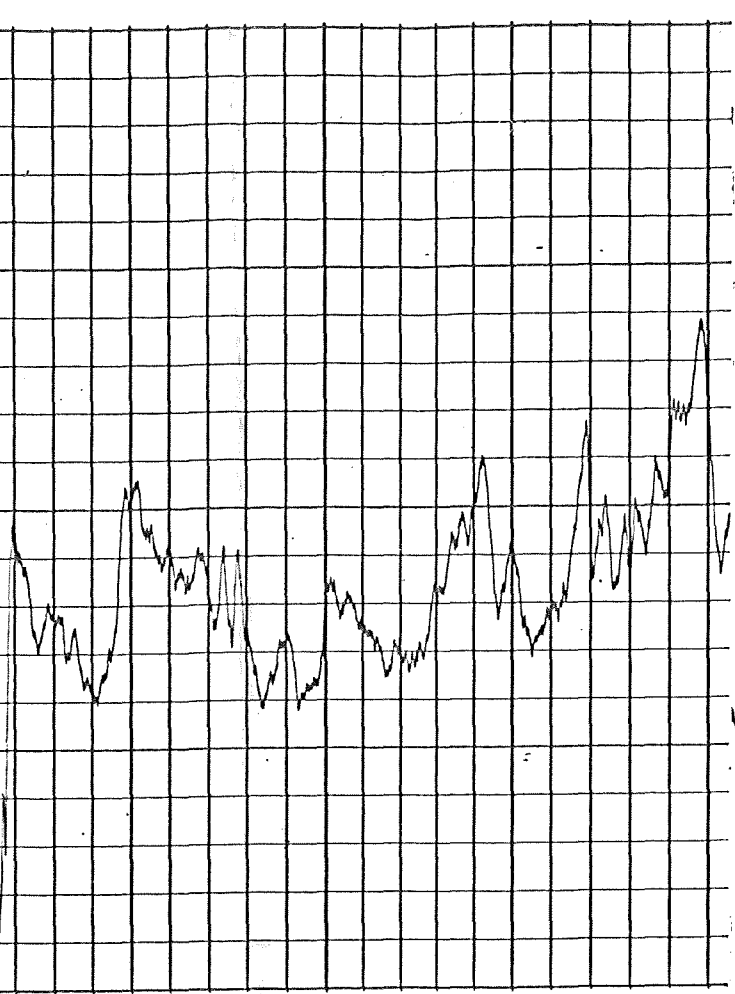
5000

5100

5200

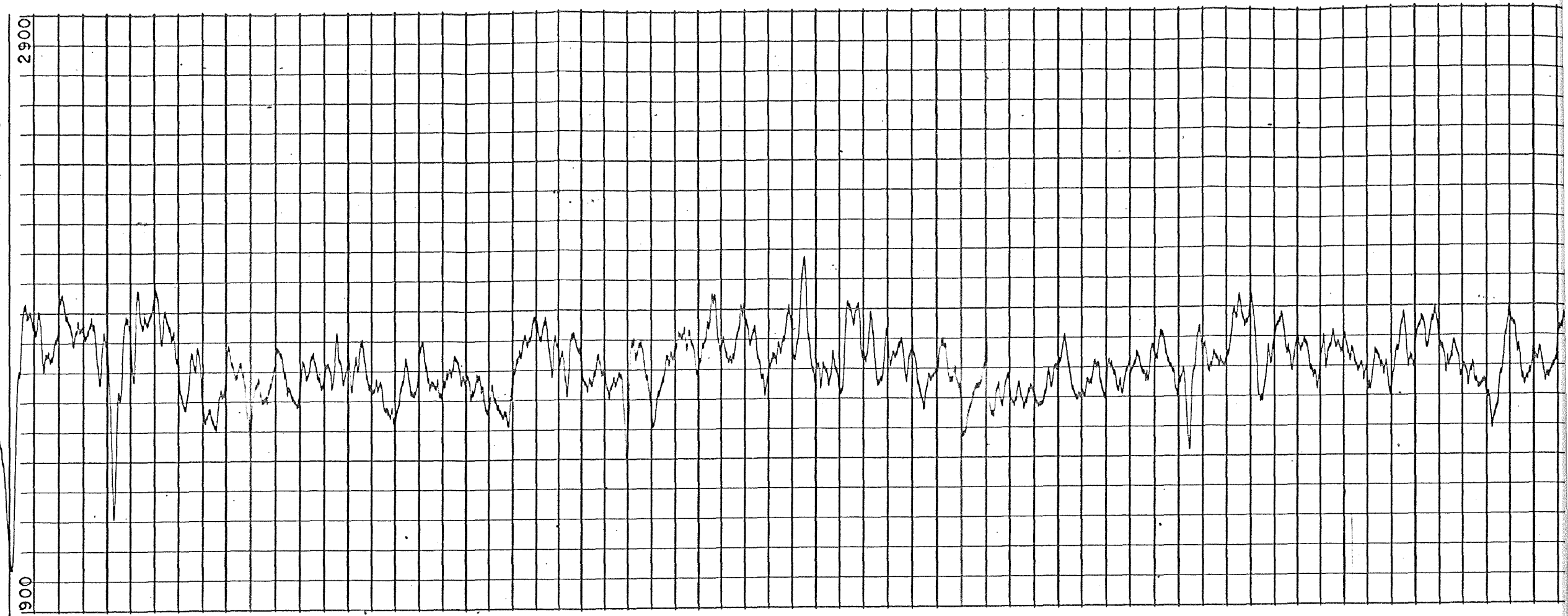
5300





8300

5405



900

CSG.

8500

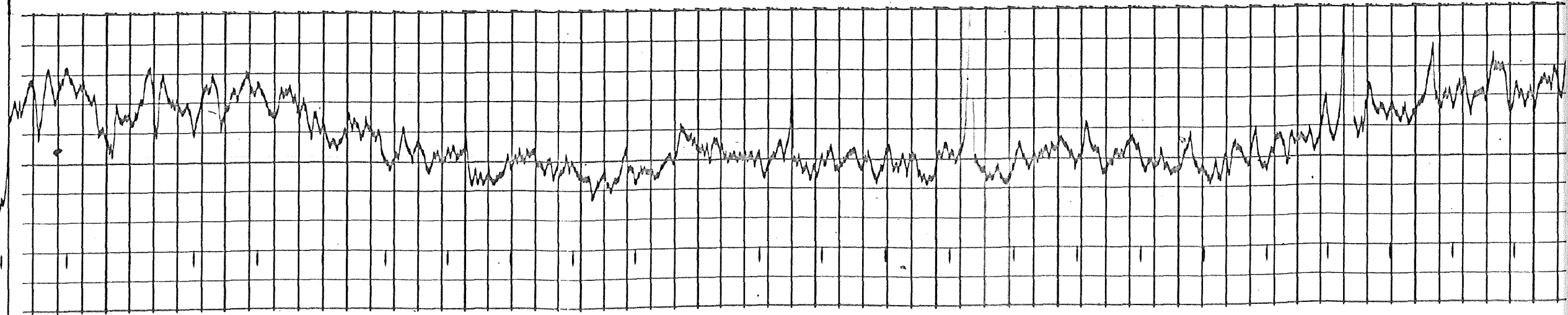
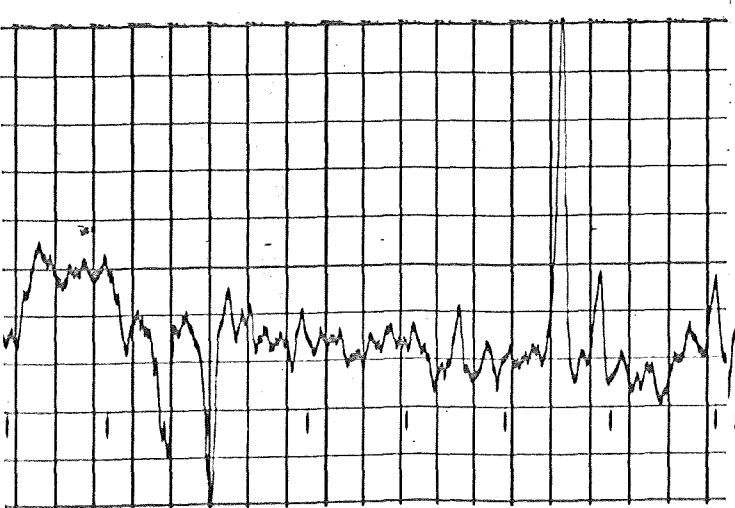
8600

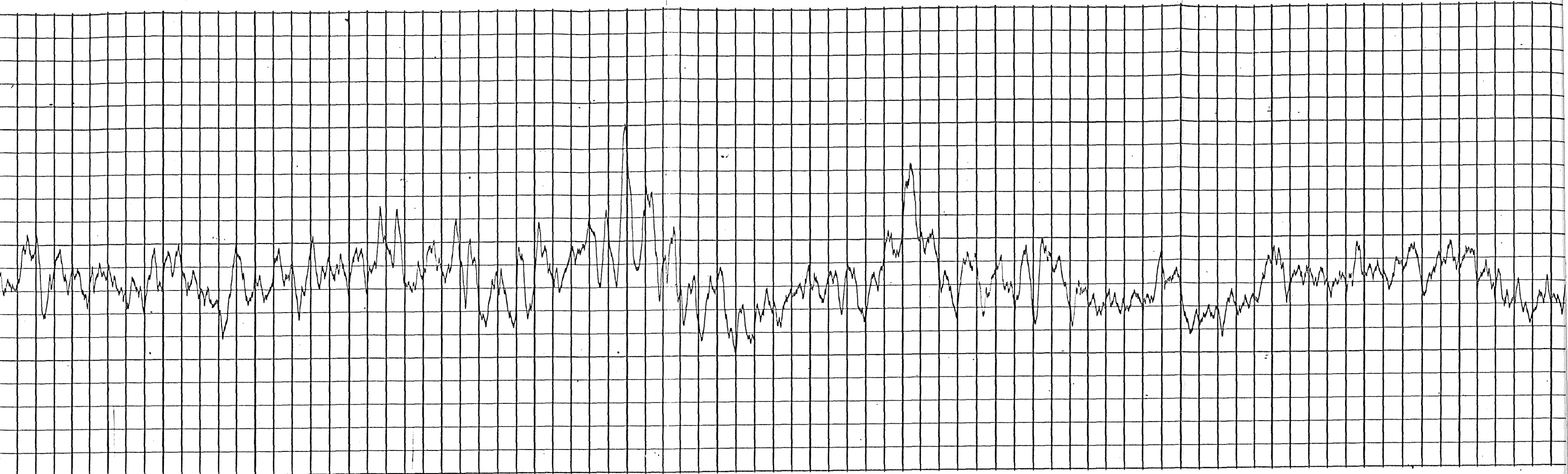
8700

8800

8900

9000





6000

6100

6200

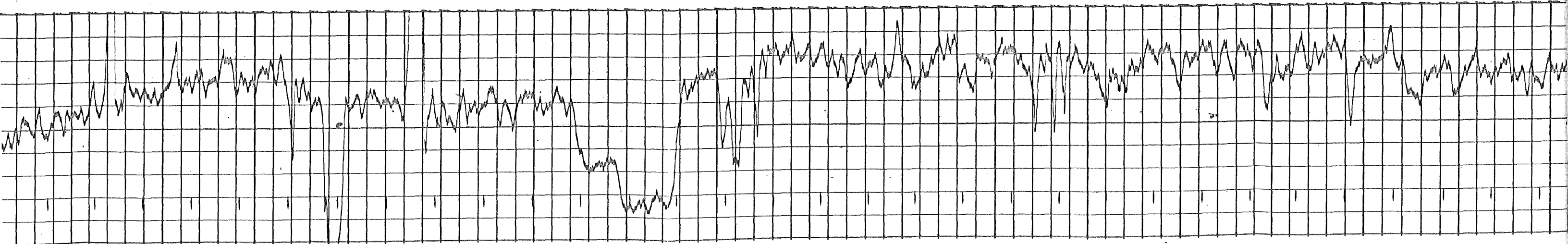
6300

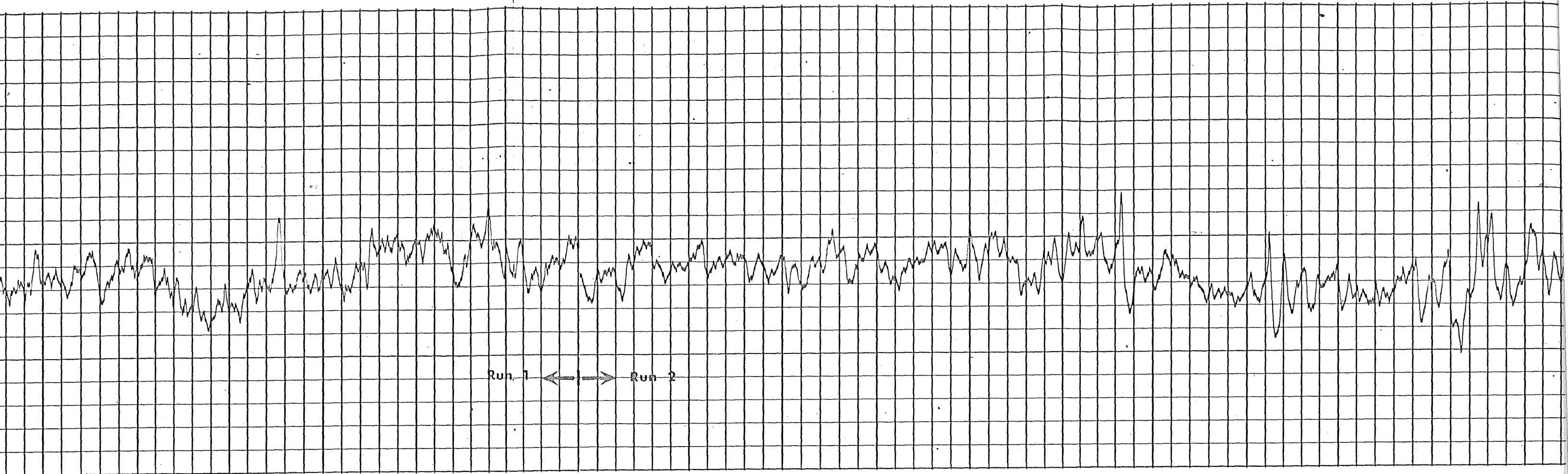
6400

6500

6600

6700





6700

6800

6900

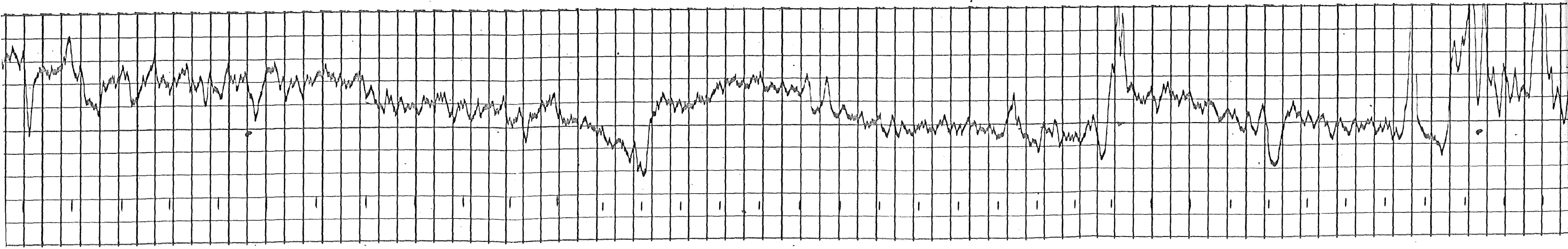
7000

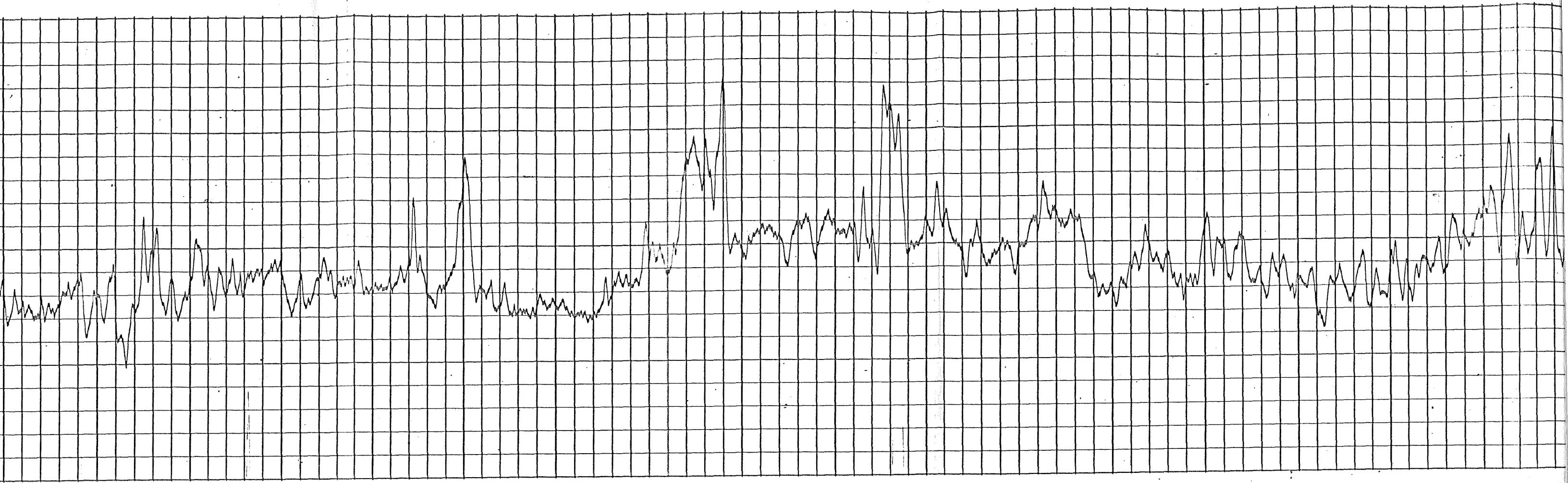
7100

7200

7300

7400





7400

7500

7600

7700

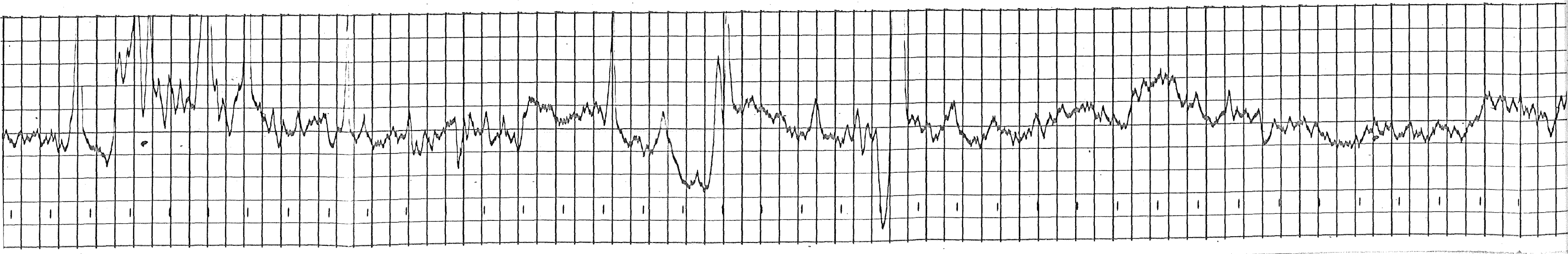
7800

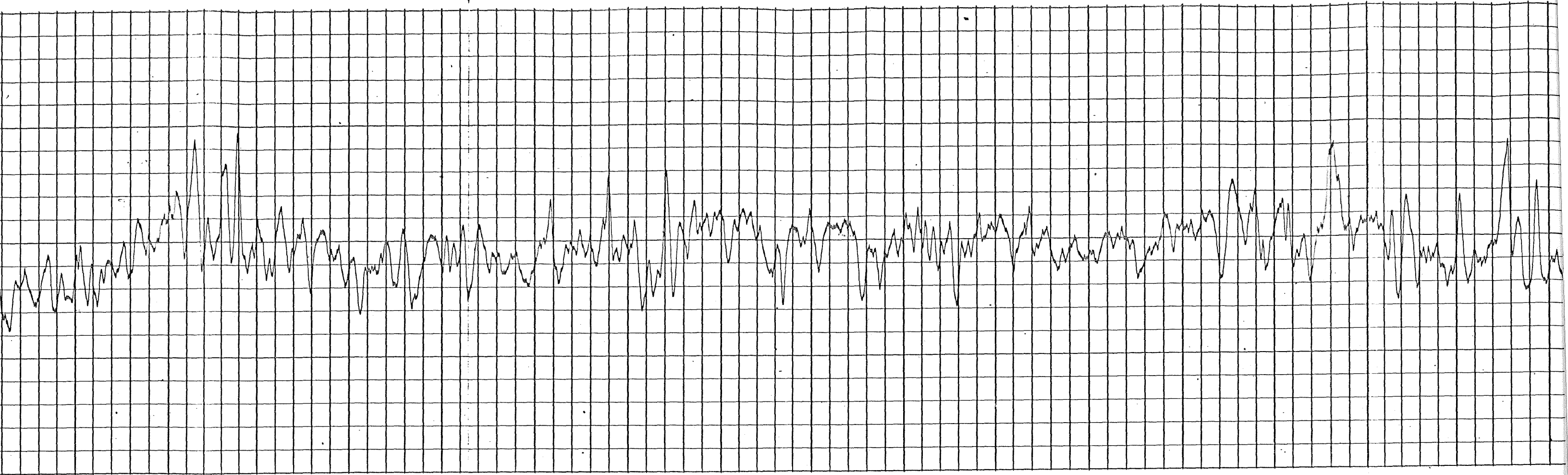
7900

8000

8100

8200





8100

8200

8300

8400

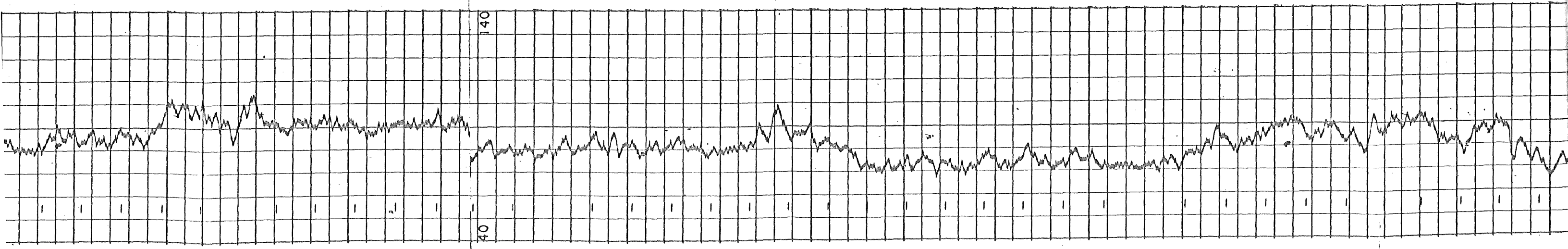
8500

8600

8700

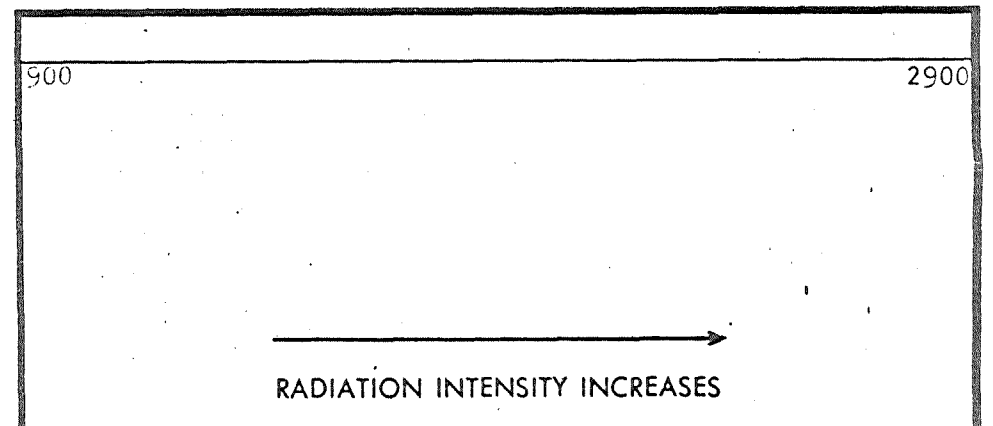
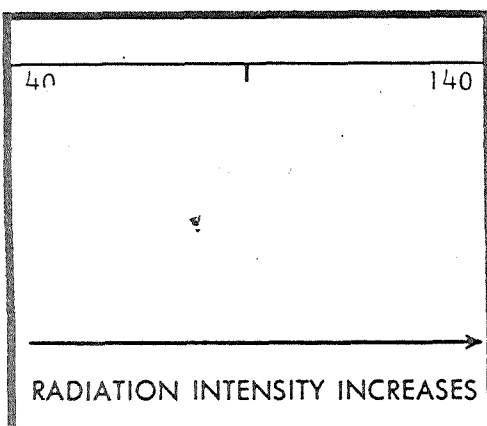
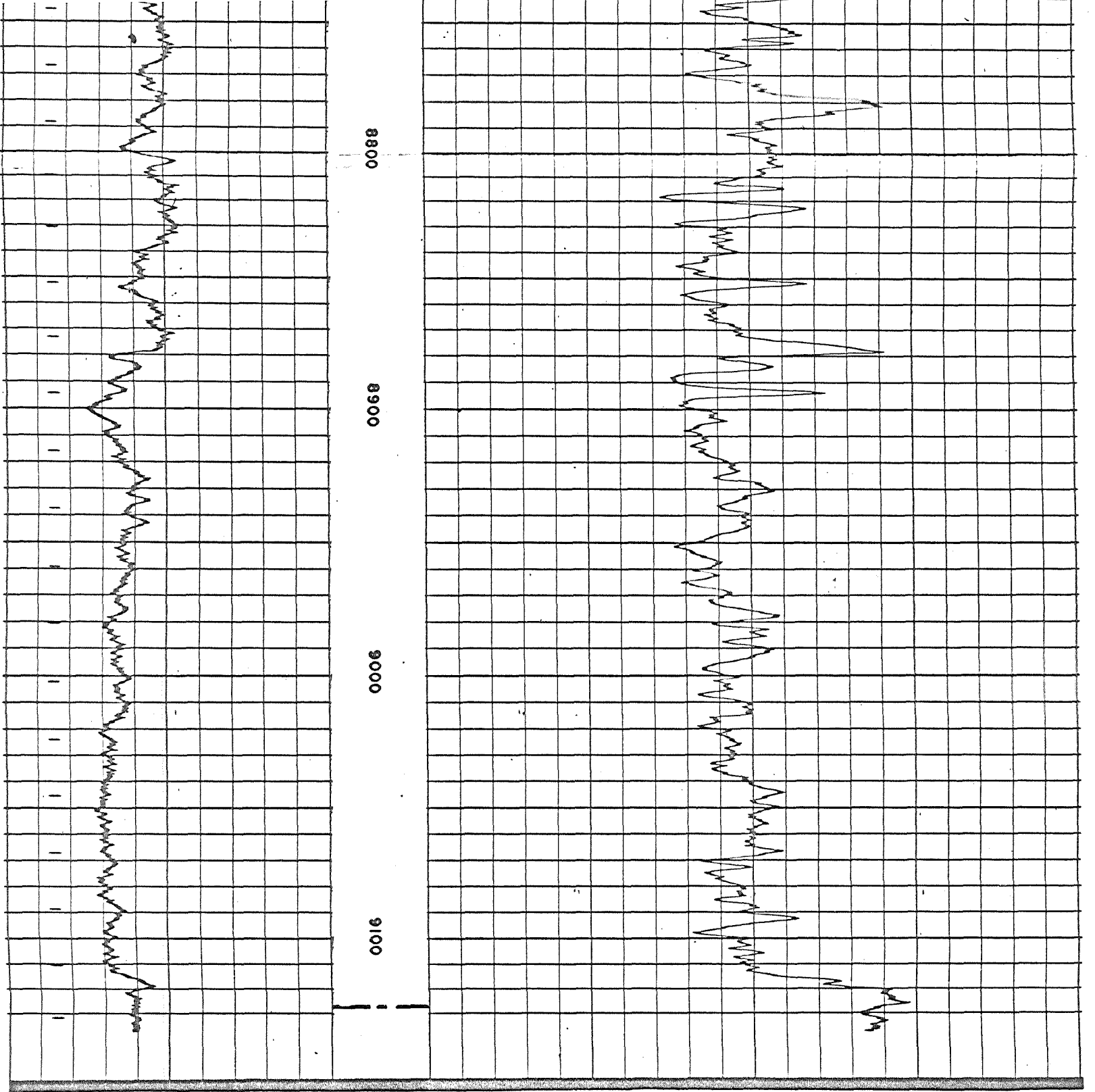
8800

8900



140

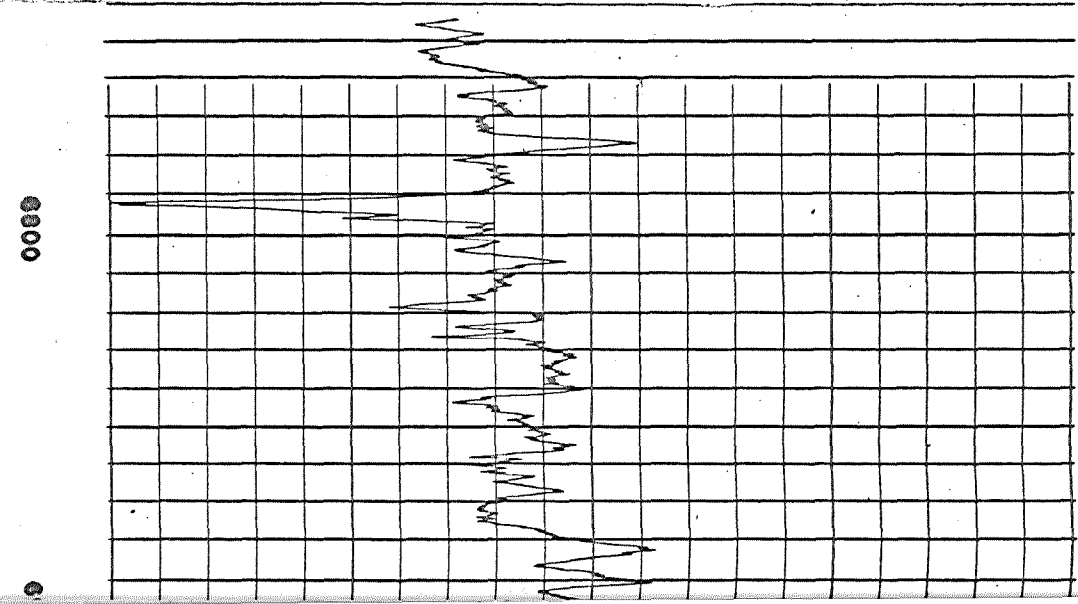
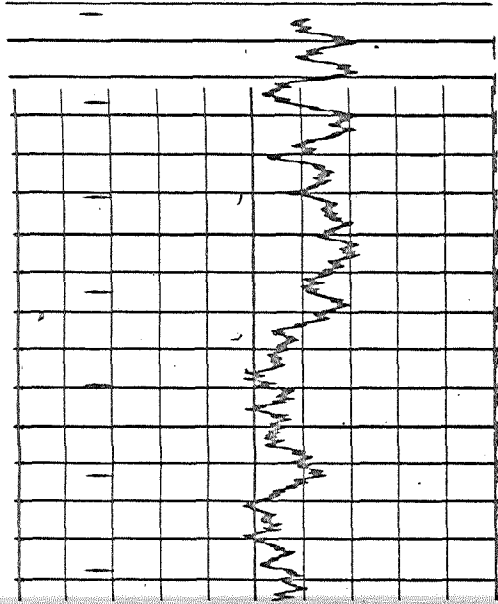
40



| GAMMA RAY API UNITS | | DEPTH | NEUTRON API UNITS | |
|------------------------|-----------------------------------------|-------|----------------------|------------------|
| Company | GEOTHERMAL KINETICS SYSTEMS CORPORATION | | Drillers T.D. | 9147 |
| Well | POWER RANCHES #2 | | Log F.R. | 9122 |
| Field | POWER GEOTHERMAL PROSPECT | | Log T.D. | 9125 |
| County | MARICOPA | | Elevations: | |
| State | ARIZONA | | K.B. 1356 | D.F. - G.L. 1336 |

REPEAT SECTION

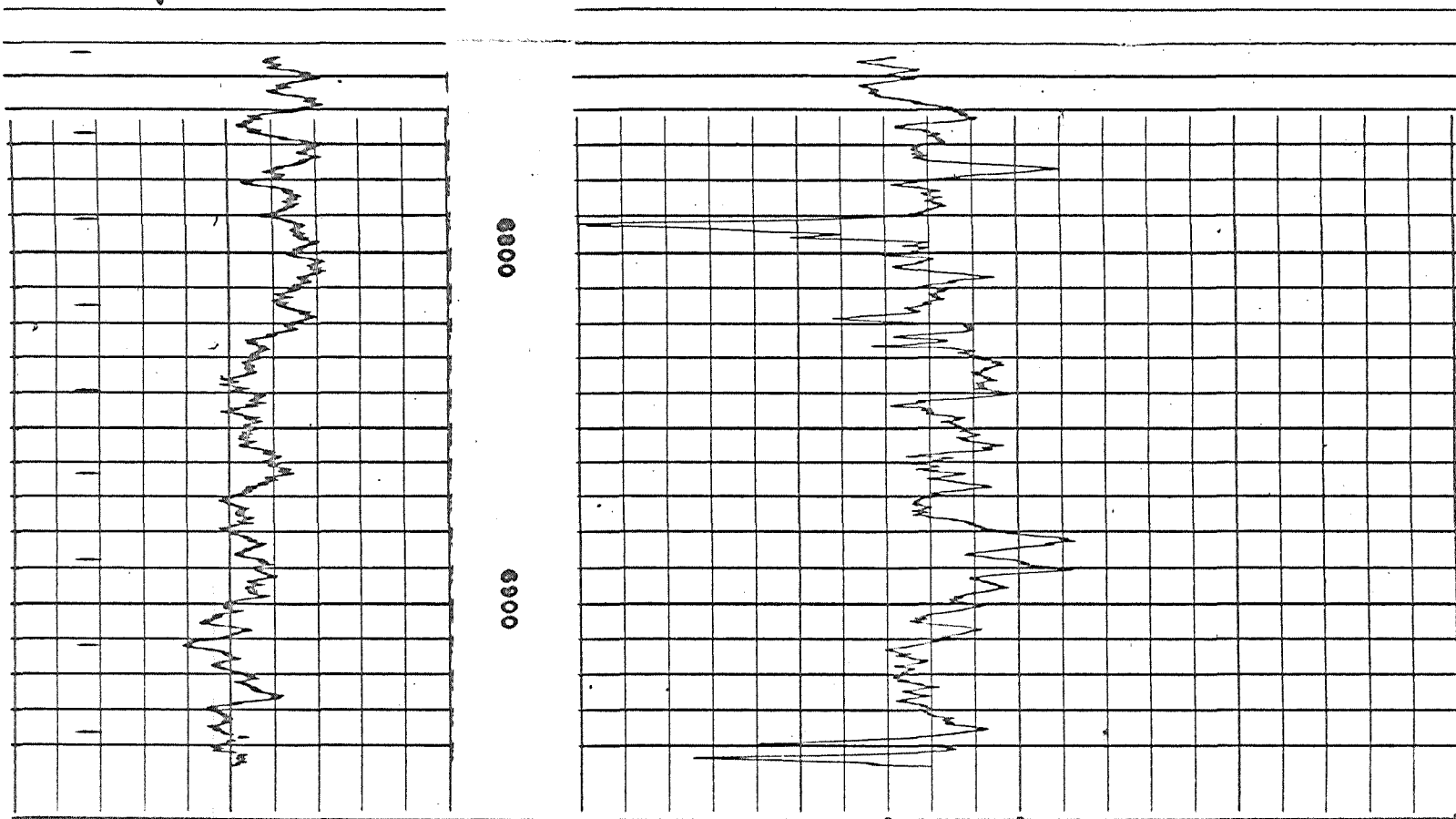
Run 1



| | | | |
|---------|-----------------------------------------|---------------|------------------|
| Company | GEOTHERMAL KINETICS SYSTEMS CORPORATION | Drillers T.D. | 9147 |
| Well | POWER RANCHES #2 | Log F.R. | 9122 |
| Field | POWER GEOTHERMAL PROSPECT | Log T.D. | 9125 |
| County | MARICOPA | Elevations: | |
| State | ARIZONA | K.B. 1356 | D.F. - G.L. 1336 |

REPEAT SECTION

Run 1



REPEAT SECTION

Run 2

