

GL02998-2 of 12

Schlumberger		COMPENSATED FORMATION DENSITY LOG Gamma Gamma					
COUNTY FIELD or LOCATION WELL NO. COMPANY	MARICOPA	WILDCAT	POWER RANCHES				
			NO.				
			GEOTHERMAL K.S.S.				
COMPANY		GEOTHERMAL KINETICS SYSTEMS CORP.					
WELL		POWER RANCHES NO. 1					
FIELD		WILDCAT					
COUNTY		MARICOPA	STATE ARIZONA				
Location:		1980 FNL 660 FWL OF SE/4	Other Services: IES HTT				
Sec. 1 Twp. 2S Rge. 63							
Permanent Datum: GL		Elev.: 1338					
Log Measured From KB		20 Ft. Above Perm. Datum					
Drilling Measured From KB		Elev.: K.B. 1358 D.F. -- G.L. 1338					
Date	2-12-73						
Run No.	ONE						
Depth-Driller	3118						
Depth-Logger	3113						
Btm. log interval	3106						
Top log interval	200						
Type fluid in hole	S.G.M.						
Salinity, PPM Cl.	80,000 PPM						
Dens. / Visc.	10.5 / 48						
pH / Fluid loss	6.4 / --						
Level	FILL						
Time since circ.	2 HOURS						
Max rec. temp.	116						
Recorded by	ELLIS						
Witnessed by	AUSTIN						
RUN		BORE-HOLE RECORD		CASING RECORD			
No.	Bit	From	To	Size	Wgt.	From	To
1		SURF	204	20	--	SURF	204
	17-1/2	204	3118				

Reproduced By
Electrical Log Services
MIDLAND, TEXAS 79701

REFERENCE K 2642F



COMPLETION RECORD

SPUD DATE _____

COMP DATE _____

DST RECORD _____

API NO. _____

CASING RECORD _____

PERFORATING RECORD _____

ACID. FRAC SHOT _____

I P _____

GOR _____ GR _____

T P _____ C P _____

REMARKS: _____

EQUIPMENT DATA									
Run No.	PG P-EC	PDH- D	PGH-A	PGSE-F	Source No.	SFT-106	SGH	Logging Unit	Location
1	273	582	394	433	2807	455		7656	FARMINGTON
2									
3									

CALIBRATION DATA							
Run No.	Gamma Ray			FDC - Before Log - ACPS		FDC - After Log - ACPS	
	API Scale	Background CPS	Total CPS	P ₁	P ₂	P ₁	P ₂
1	0-100	72	460	480	760	480	760
2							
3							

LOGGING DATA		
General	Gamma Ray	FDC Selectors

Run No.	PG-P	EC	PDH-D	PGH-A	PGS-E	Source No.	SFT-106	SGH	Logging Unit	Location
1	273		582	394	433	2807	455		7656	FARMINGTON
2										
3										

Run No.	Gamma Ray			FDC - Before Log - ACPS		FDC - After Log - ACPS	
	API Scale	Background CPS	Total CPS	P ₁	P ₂	P ₁	P ₂
1	0-100	72	460	480	760	480	760
2							
3							

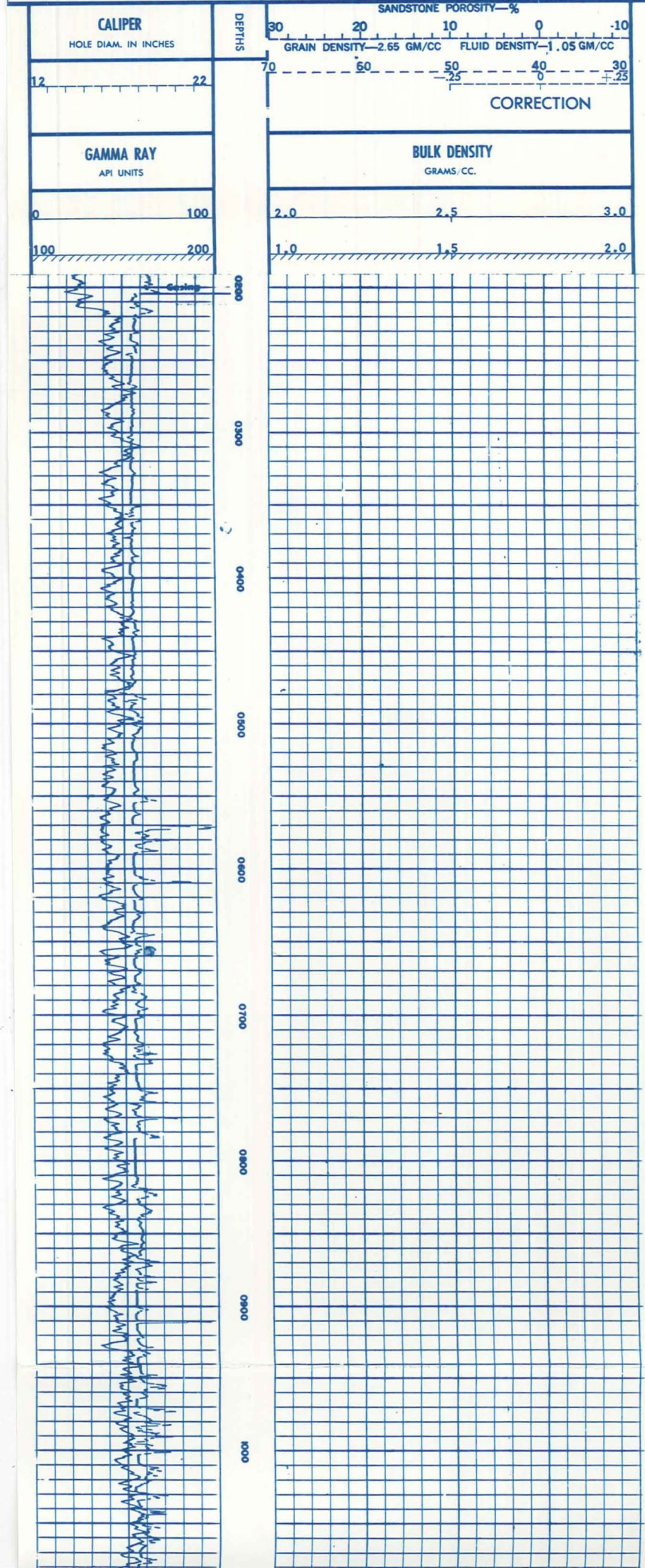
Run No.	General				Gamma Ray		FDC Selectors		
	Depths		Speed Ft./Min.	Tc	API Scale	Liquid Density	Grain Density	Hole Fluid	Porosity Scale
1	From	To	30	2	0-100	1.05	2.65	LIQUID	20/TK

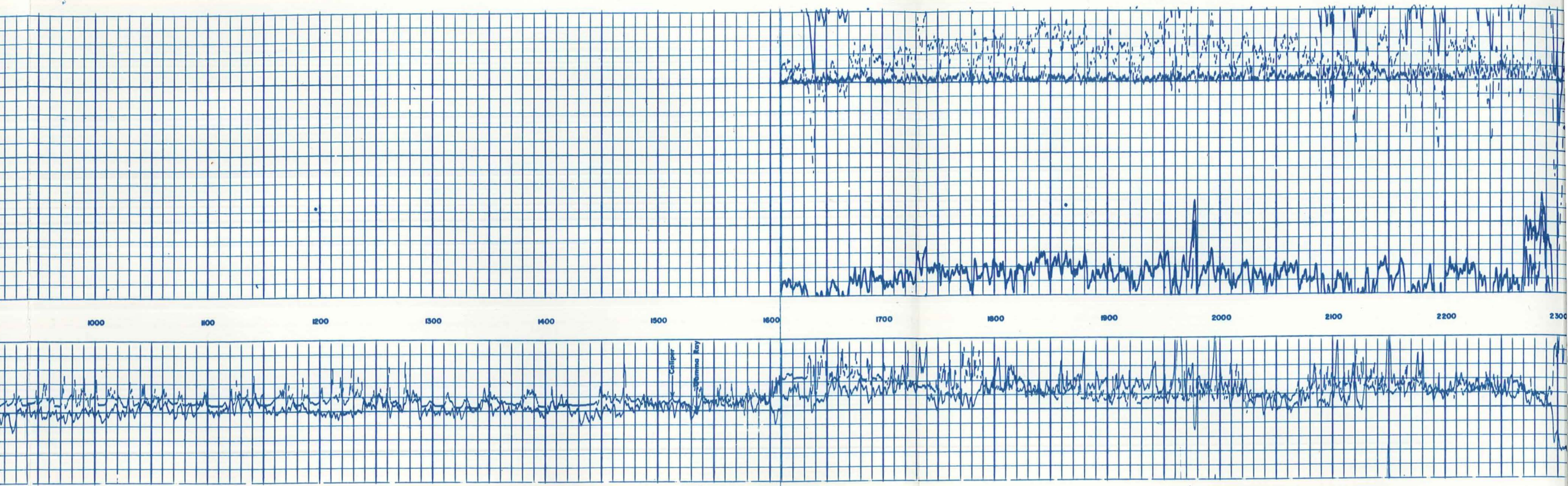
Run No.	Rm.	@	% Solids by Vol.	% Oil by Vol.	% Water by Vol.	Viscosity, Sec/Qt @	°F	Solids, Av. Sp. Gr.
1		@						
2		@						
3		@						

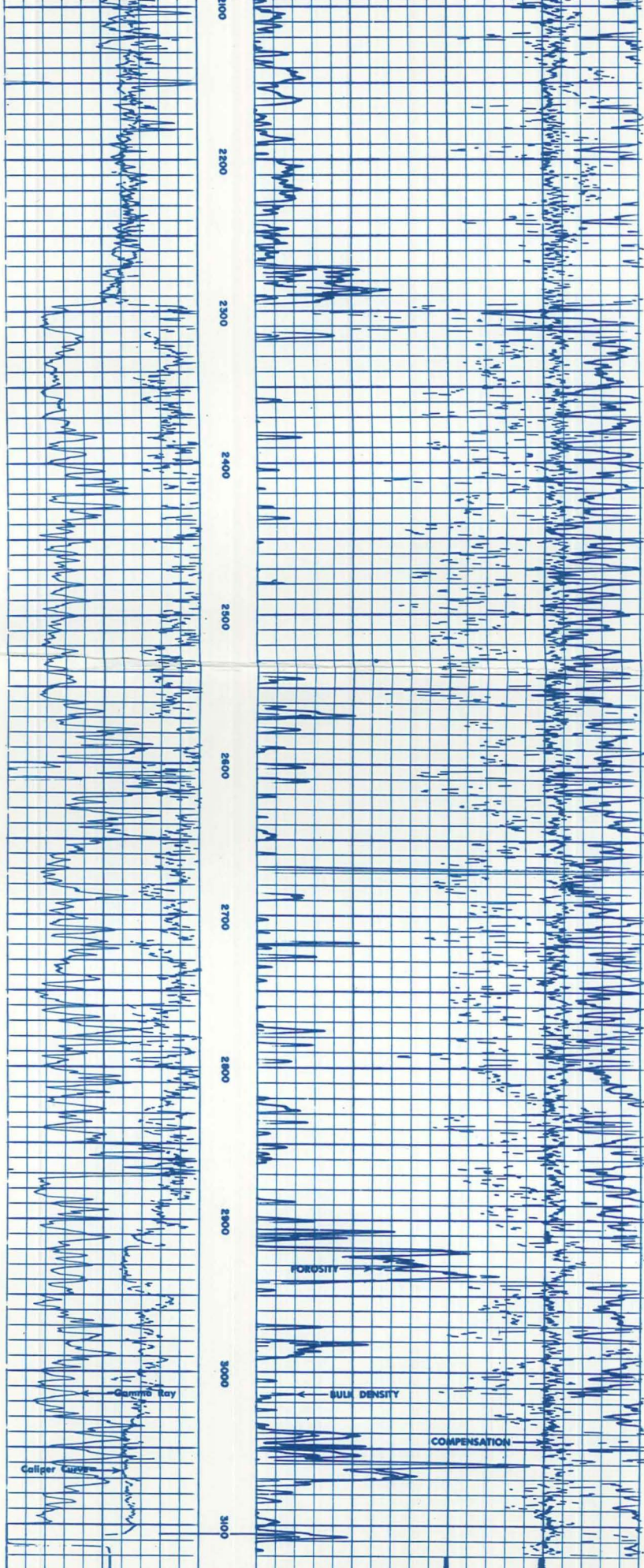
Remarks: S.O. 74231

 REPRODUCTION FOR RESALE PROHIBITED

All interpretations are opinions based on inferences from electrical or other measurements and we cannot, and do not guarantee the accuracy or correctness of any interpretations, and we shall not, except in the case of gross or willful negligence on our part, be liable or responsible for any loss, costs, damages or expenses incurred or sustained by anyone resulting from any interpretation made by any of our officers, agents or employees. These interpretations are also subject to Clause 7 of our General Terms and Conditions as set out in our current Price Schedule.







DETAIL LOG
5" = 100'

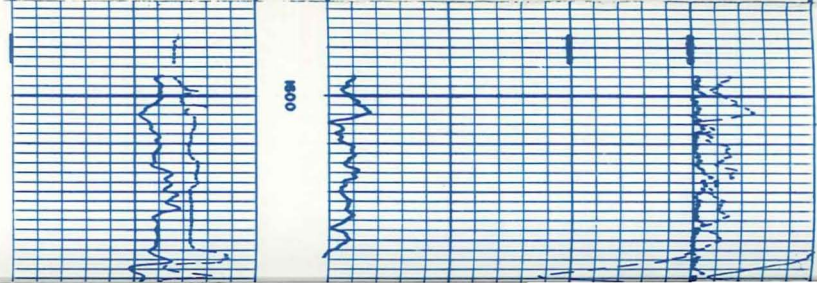
CALIPER HOLE DIAM. IN INCHES	
12	22

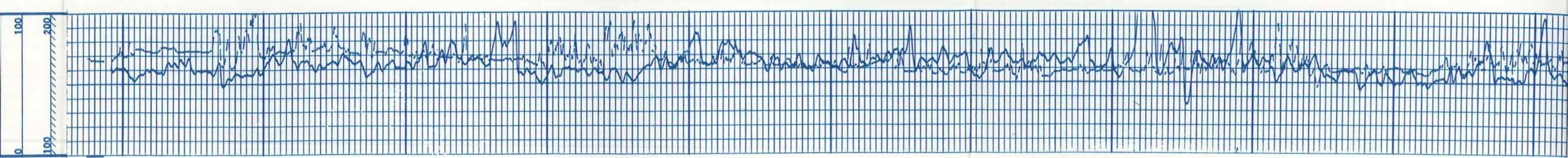
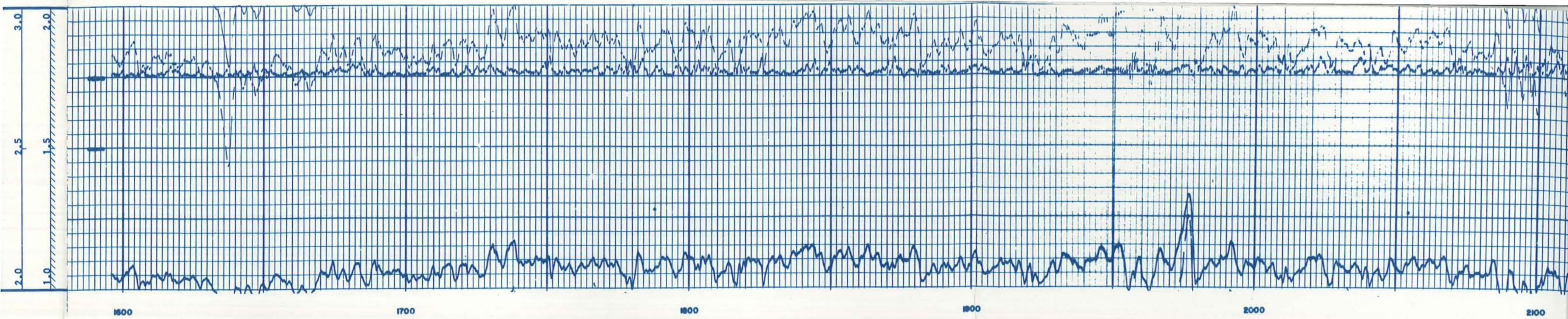
GAMMA RAY API UNITS	
0	100
100	200

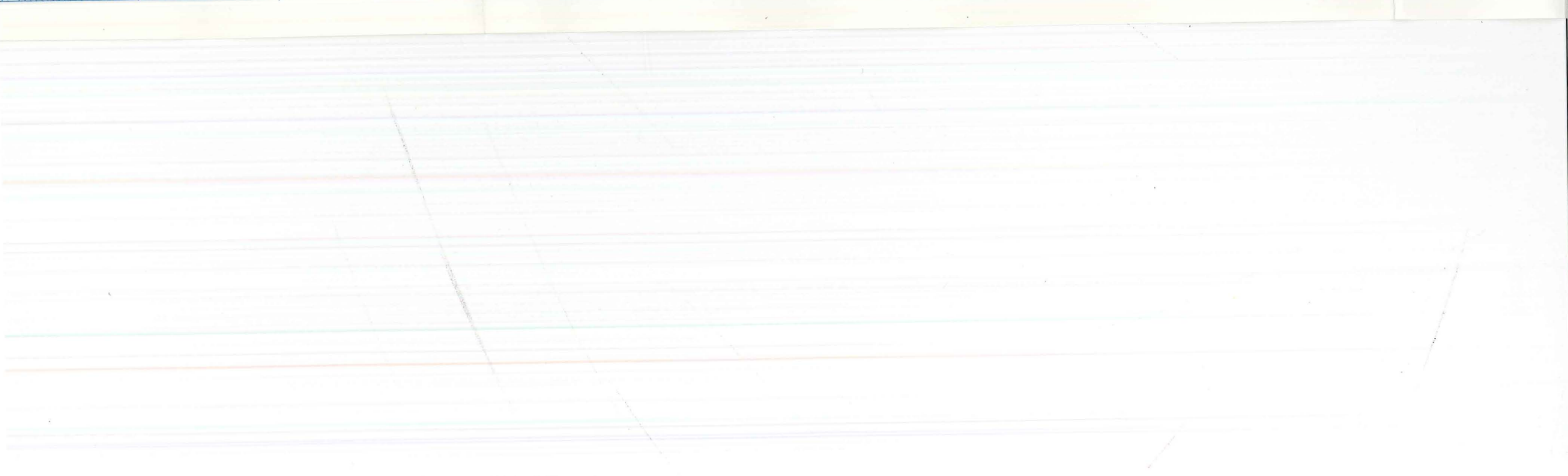
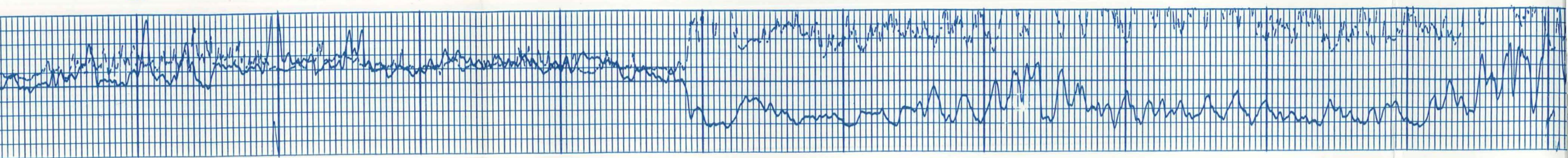
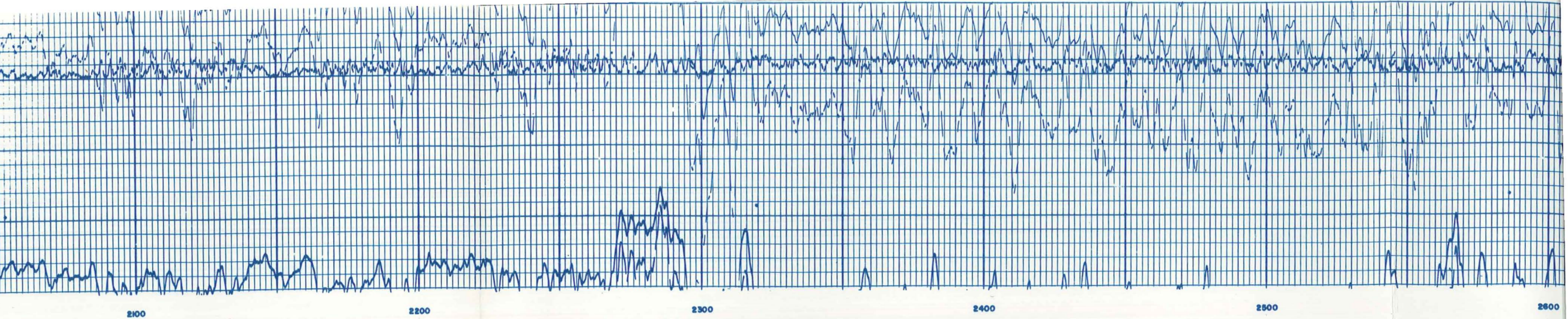
DEPTH	SANDSTONE POROSITY—%	
	GRAIN DENSITY—2.65 GM/CC	FLUID DENSITY—1.05 GM/CC
30	20	10
70	60	50
		-25
		0
		+25

CORRECTION

BULK DENSITY GRAMS/CC.		
2.0	2.5	3.0
1.0	1.5	2.0









2600

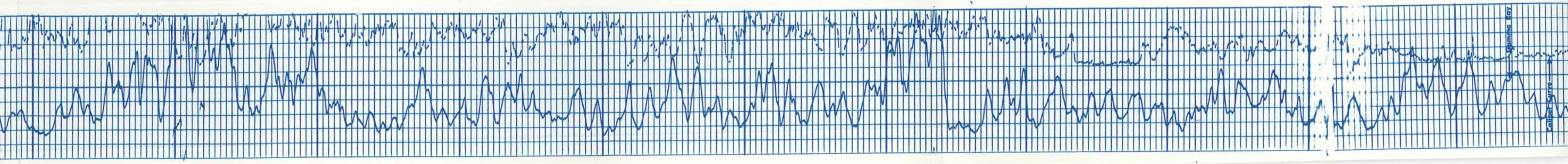
2700

2800

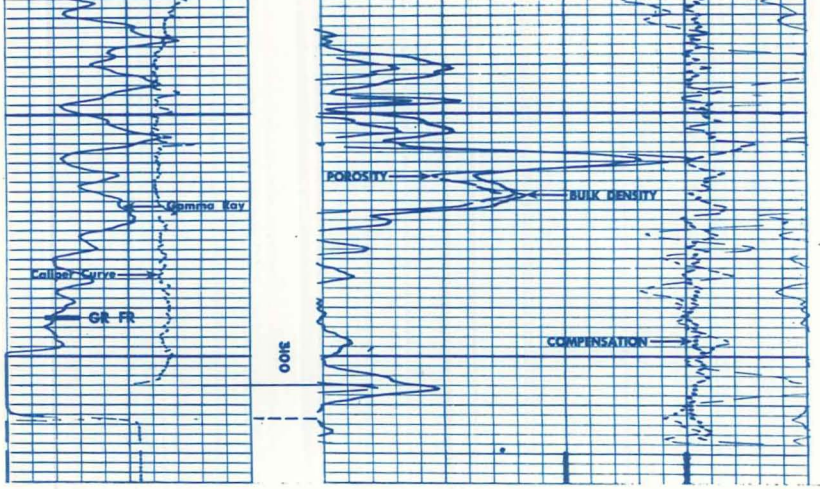
2900

3000

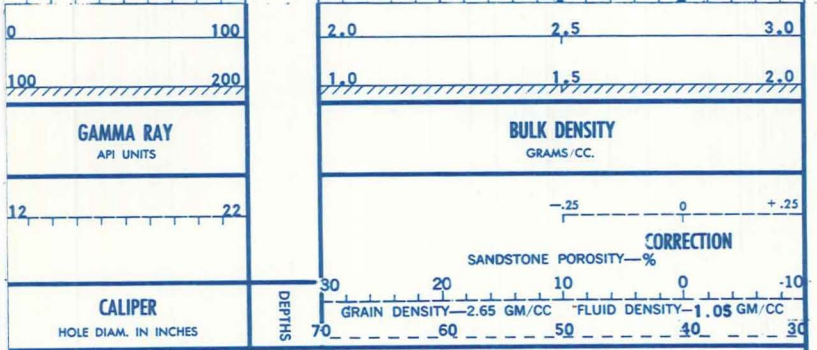
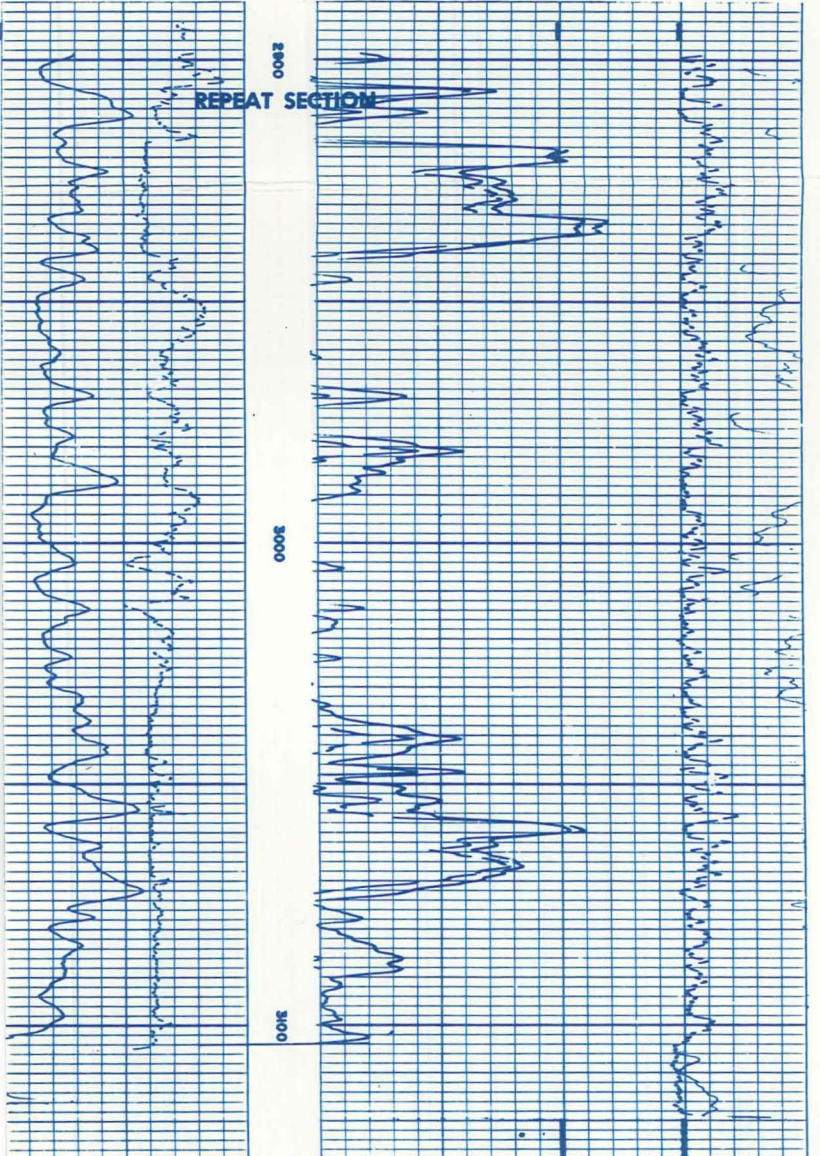
MIUK DENSITY
RISKOSITY



MIUK DENSITY
RISKOSITY

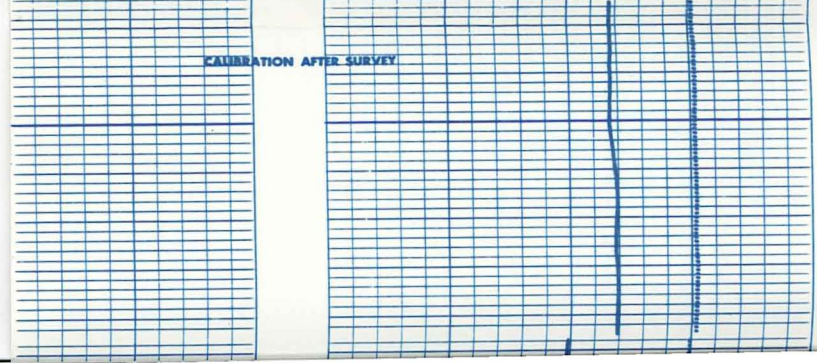


REPRODUCTION FOR RESALE PROHIBITED

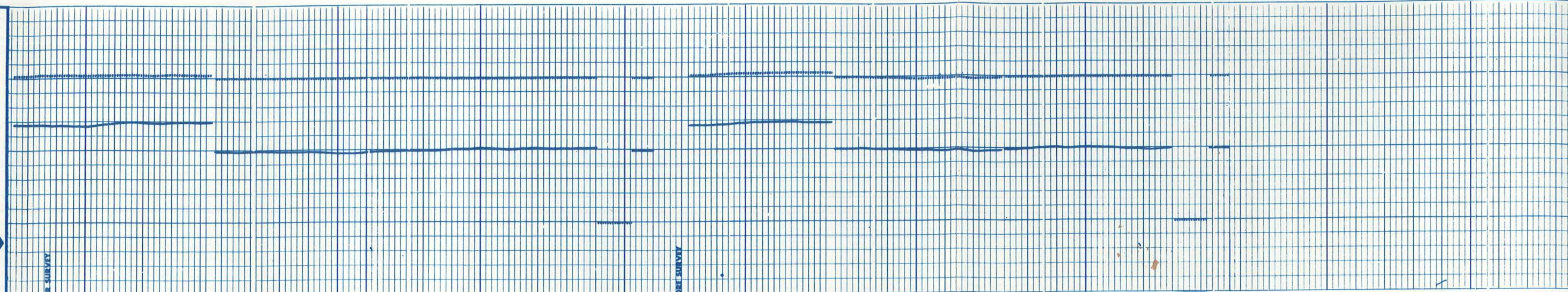


COMPANY GEOTHERMAL KINETICS SYSTEMS CORP. SCHL. FR 3106
 WELL POWER RANCHES NO. 1 SCHL. TD 3113
 FIELD WILDCAT DRLR TD 311B
 COUNTY MARICOPA STATE ARIZONA Elev: KB 1358
 DF --
 GL 1338

CALIBRATION RECORD



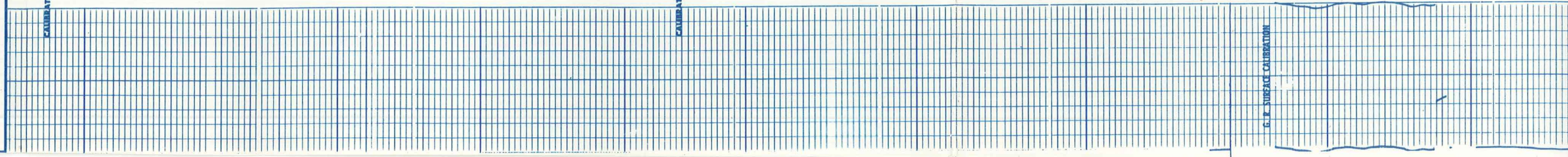
LEVEL THAT RECORD



CALIBRATION AFTER SURVEY

CALIBRATION BEFORE SURVEY

G.P. SURFACE CALIBRATION



CALIBRATION BEFORE SURVEY

G. R. SURFACE CALIBRATION

PANEL FUNCTION FORMER CHECKS

CALIBRATION RECORD

COMPANY GEOTHERMAL KINETICS SYSTEMS CORP.
 WELL POWER RANCHES NO. 1
 FIELD WILDCAT
 COUNTY MARICOPA STATE ARIZONA

SCHL FR 3106
 SCHL TD 3113
 DRLR TD 3118
 Elev: KB 1358
 DF --
 GL 1338