

**Gamma Ray**  
Newborn  
605

FILE NO. **Field Point**  
COMPANY **GEOTHERMAL KINETICS SYSTEMS CORP.**

WELL **POWER RANCHES #1**

FIELD **WILDCAT**

COUNTY **MARICOPA** STATE **ARIZONA**

LOCATION: **1980N + 660W of SE 1/4 Center NE, SE**

SEC **1** TWP **25** RGE **6E**

Other Services: **IEL A/L Caliper**

Permanent Datum **G1** Elevations: **KB 1338**

Log Measured from **KB** 20 Ft. Above Permanent Datum **KB 1338**

Drilling Measured from **KB** Permanent Datum **KB 1338**

Date **3-25-73**

Run No. **ONE**

Type Log **GR NEN**

Depth-Driller **GR NEN**

Depth-Logger **90 65**

Bottom Logged Interval **90 75**

Top Logged Interval **90 73**

Type Fluid in Hole **Water**

Salinity Ppm Cl. **Water**

Density Lb./Gal. **5.68**

Level **240**

Max. Rec. Temp. Deg. F **341**

Oper. Rig Time **3 hr**

Recorded By **Richardson**

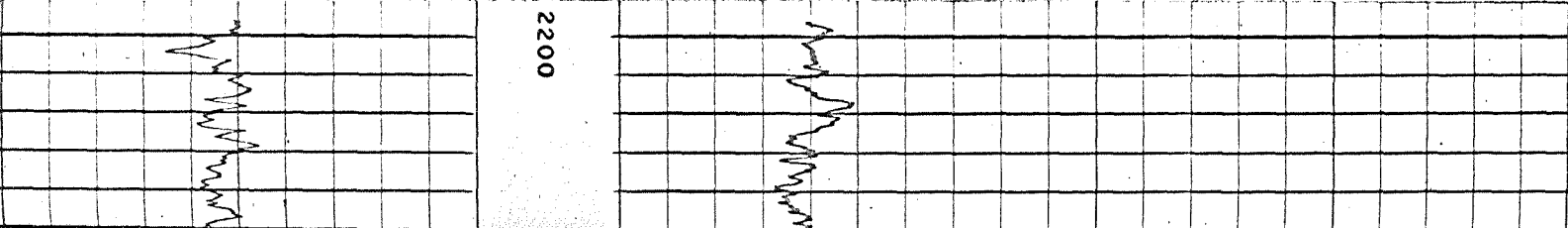
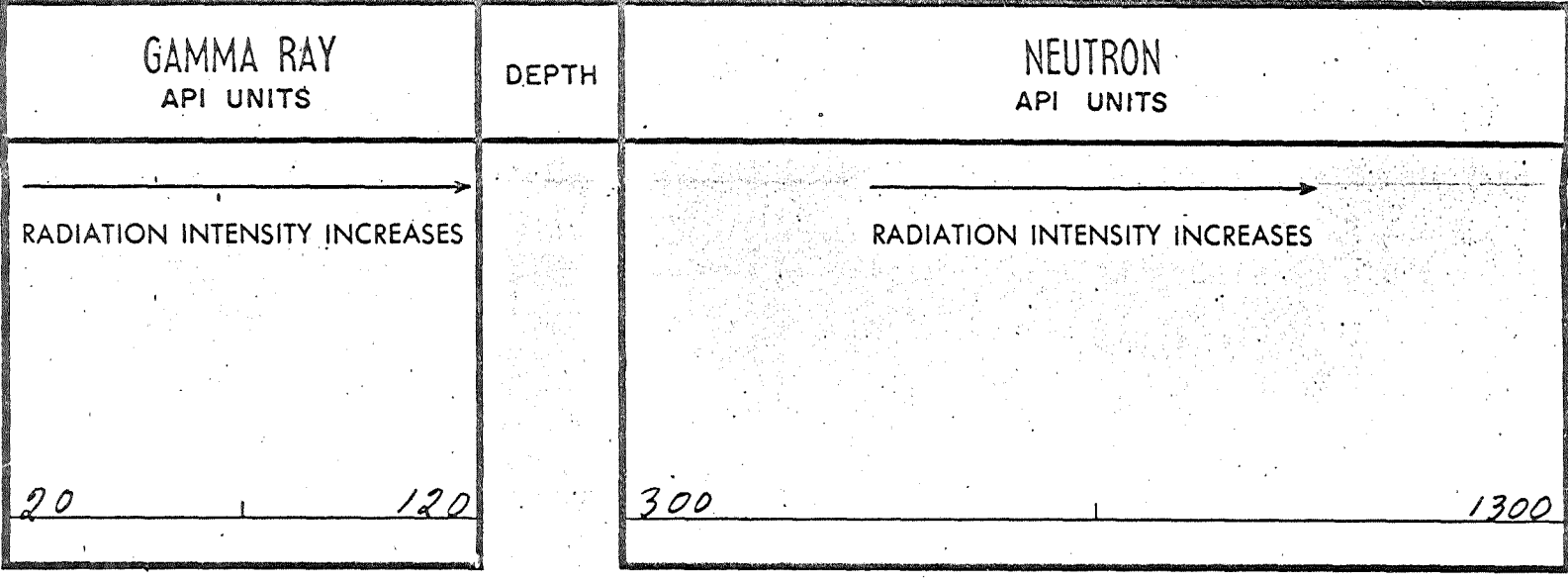
Witnessed By **ALY AUSTIN**

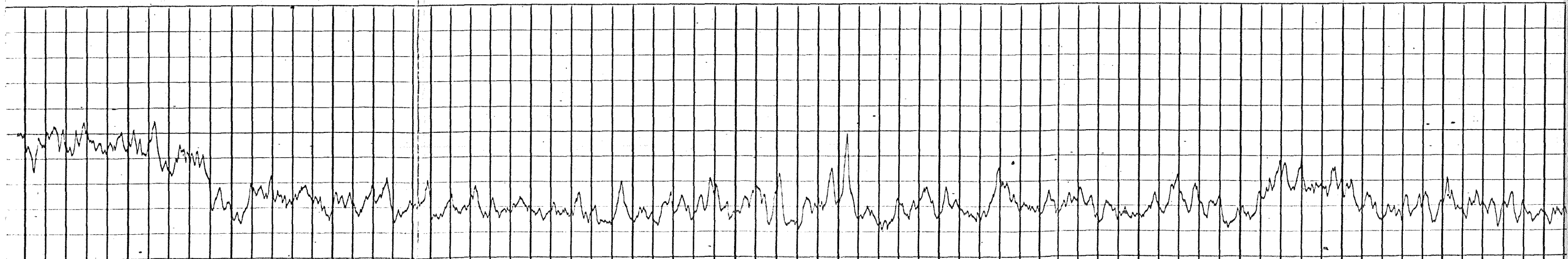
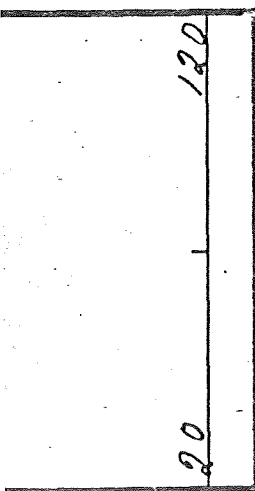
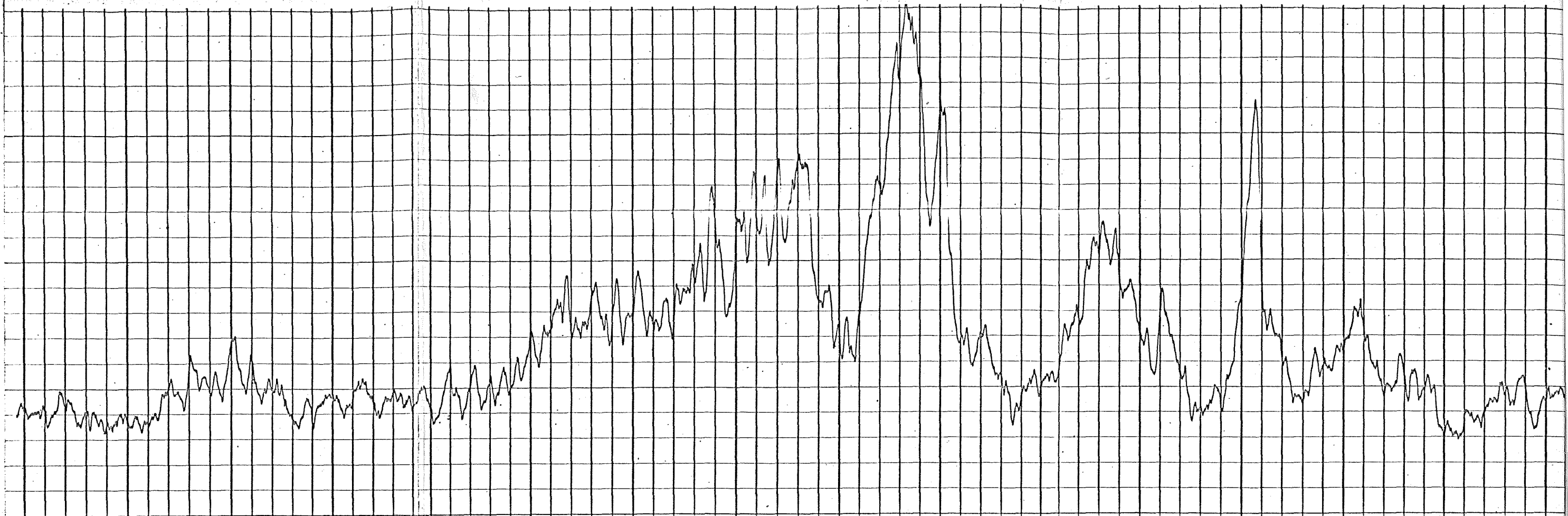
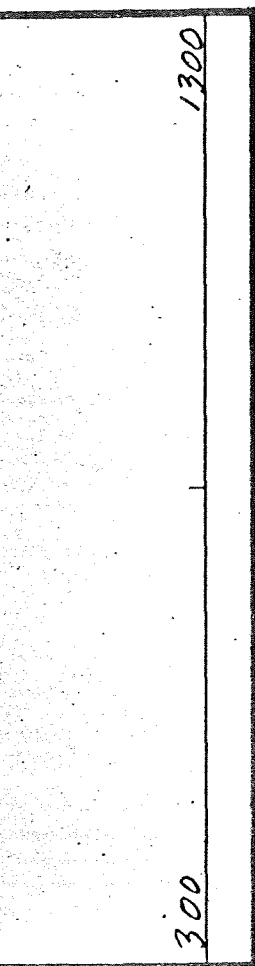
Run No. **8 3/4** Bit **5403** From **9065** To **13 3/8** Size **13 3/8** Wgt. **5417** From **2900** To **3117** Casing Record **2900** Release Date **5403**

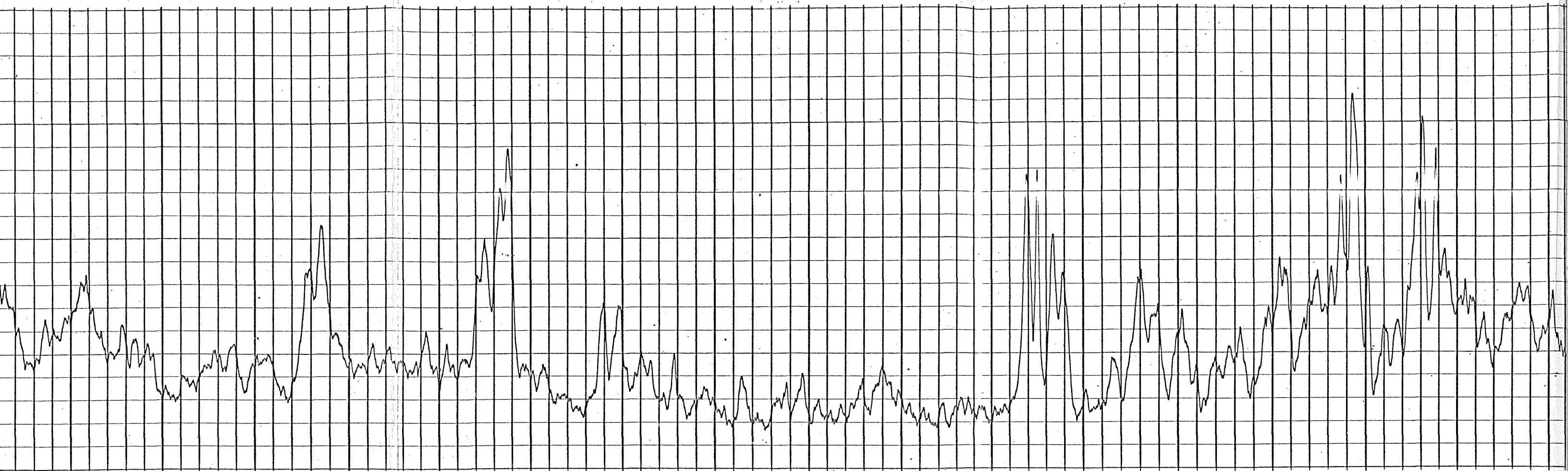
**CONFIDENTIAL**

**NO INFORMATION TIGHT**  
**CONFIDENTIAL**  
**FOR OFFICIAL USE ONLY**  
**SCALE**

Gamma Ray				Equipment Data				Neutron			
Run No.	ONE			Run No.	ONE			Run No.	ONE		
Tool Model No.	2404			Log Type	NEN			Tool Model No.	2404		
Diam.	1.7			Tool Model No.	2404			Diam.	1.7		
Detect. Model No.	SC1AT			Detect. Model No.	SC1AT			Detect. Model No.	SC1AT		
Type	5			Type	4"			Type	5		
Length	10'			Length	4"			Length	10'		
Dist. to N. Source				Source Model No.				Source Model No.			
General				Serial No.				Serial No.			
Hoist Truck No.	HL6065			Spacing	13.5			Spacing	13.5		
Inst. Truck No.				Type	AmBe			Type	AmBe		
Tool Serial No.				Strength	4.5047KV			Strength	4.5047KV		
Logging Data											
General				Gamma Ray				Neutron			
Run No.	Depths		Speed	T.C.	Sens.	Zero	API G.R. Units	T.C.	Sens.	Zero	API N. Units
	From	To	Ft./Min.	Sec.	Settings	Div. L or R	Per Log Div.	Sec.	Settings	Div. L or R	Per Log Div.
1	9077	5405	30	1.5	488	2-L	20	1.5	286	6-L	100
1	5405	2200	30	1.5	976	2-L	10	1.5	572	6-L	50
Remarks:											
				Equipment Used				Reference Literature:			
				Run No. ONE							
				S. O. No. 12448							
				Tool No. 28114							
				Elec. No. 28114							
				Panel No. 23817 2193				27818			
				Conv. Set							







2900

3000

3100

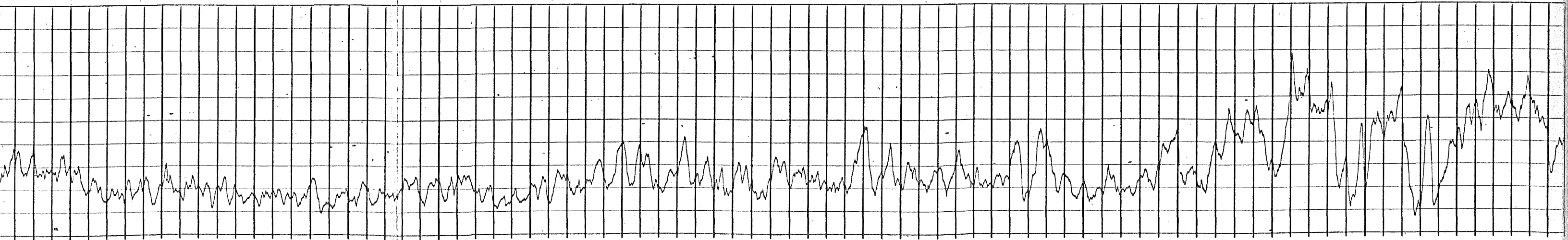
3200

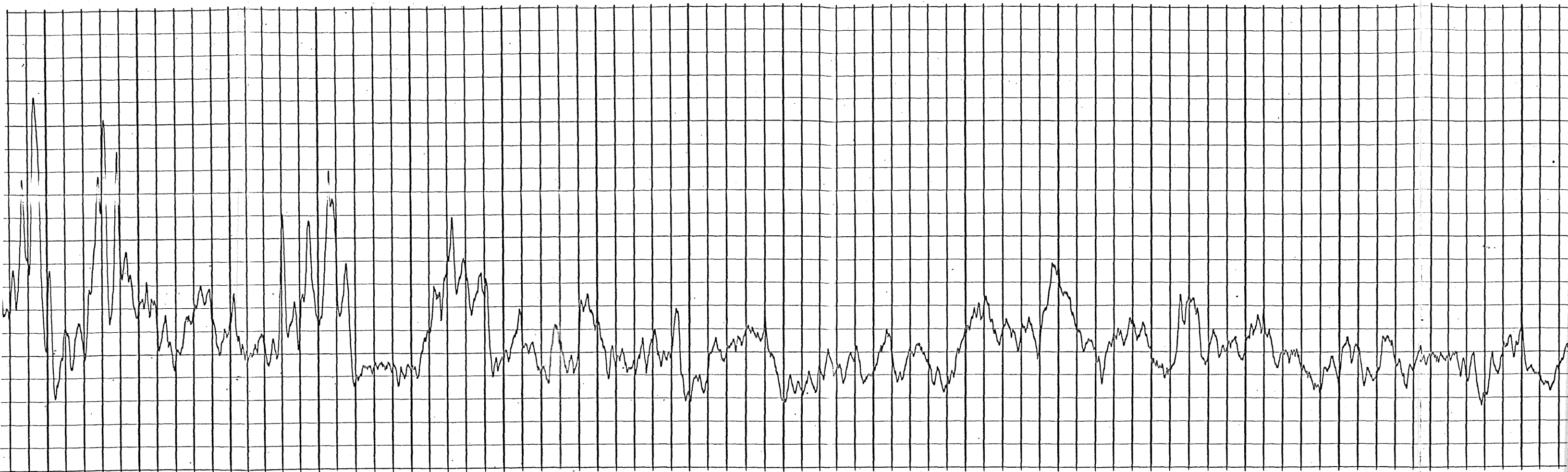
3300

3400

3500

3600





3600

3700

3800

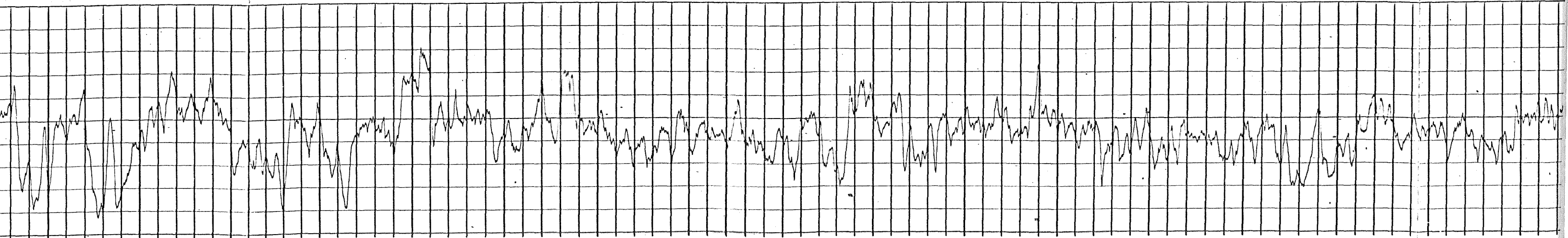
3900

4000

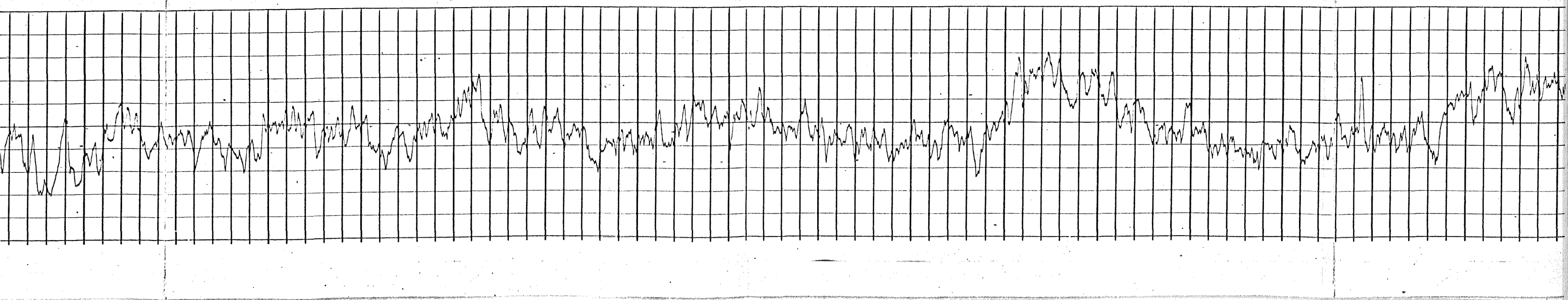
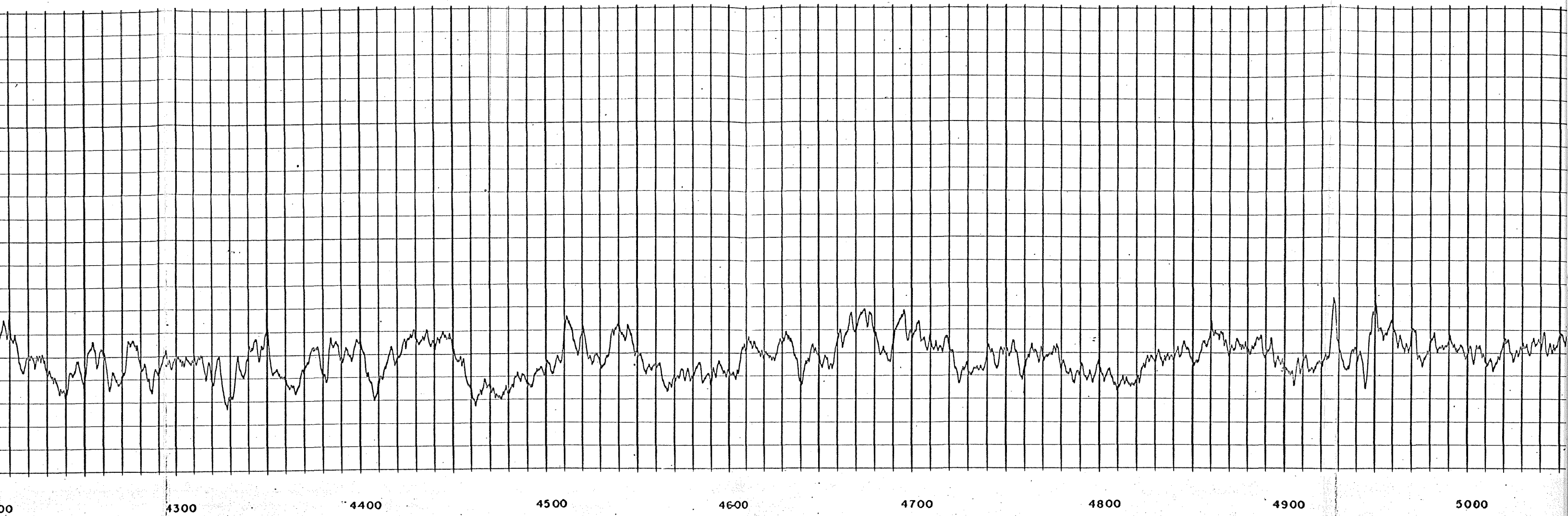
4100

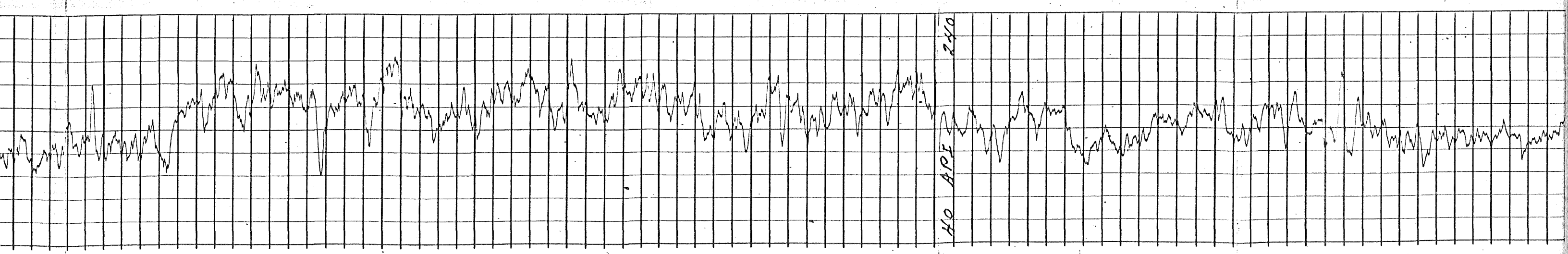
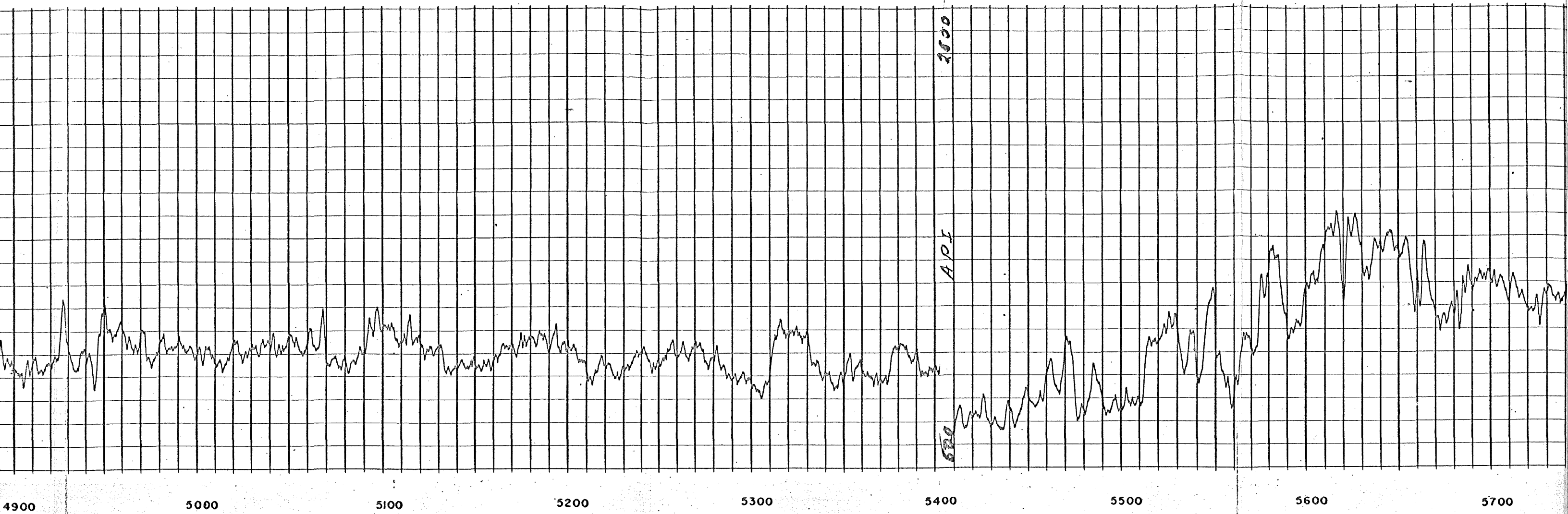
4200

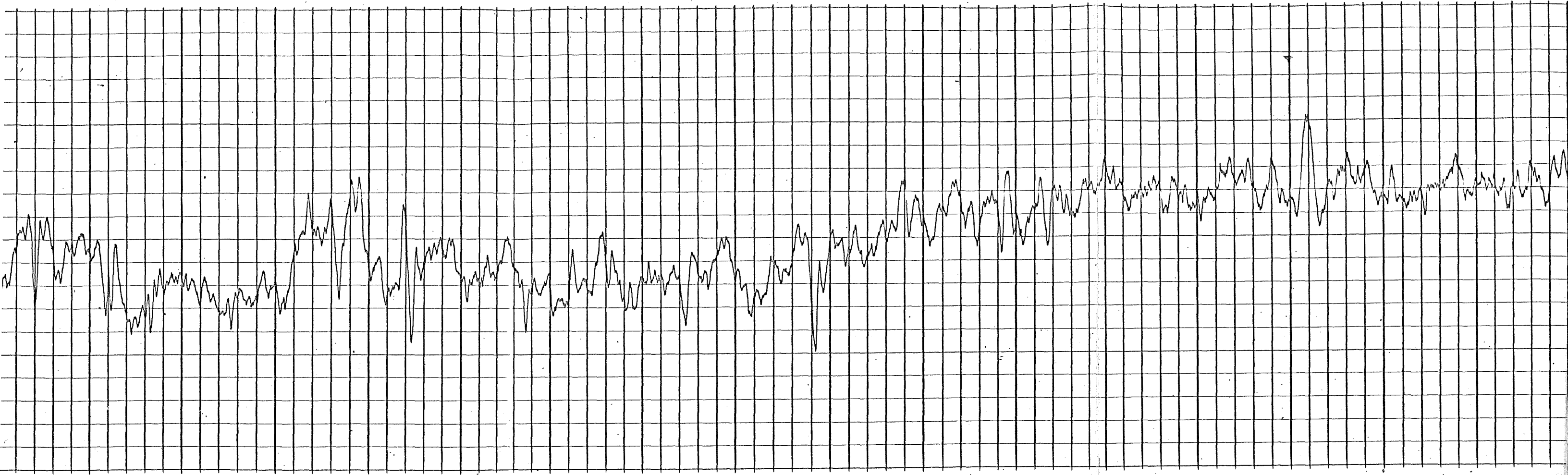
4300



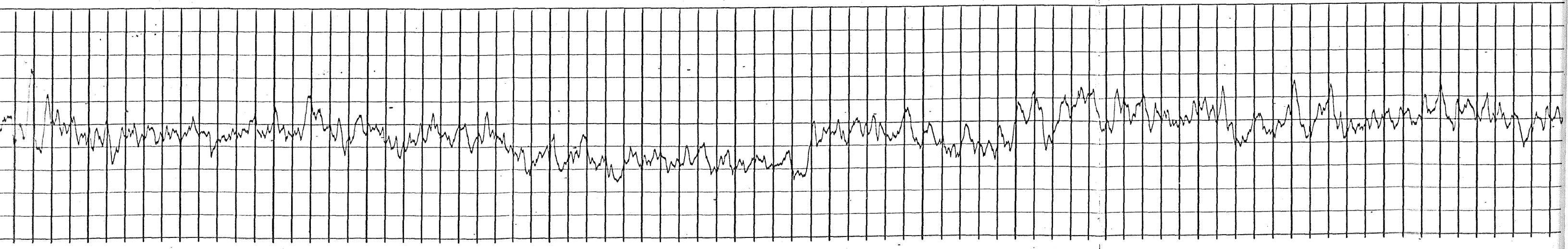


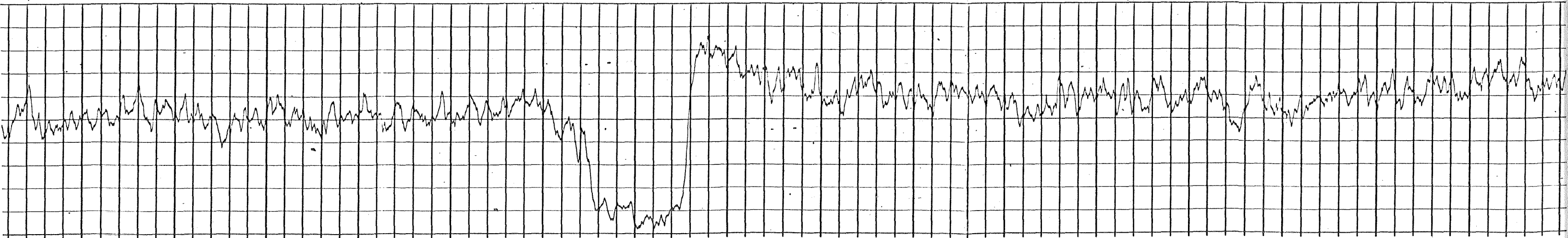
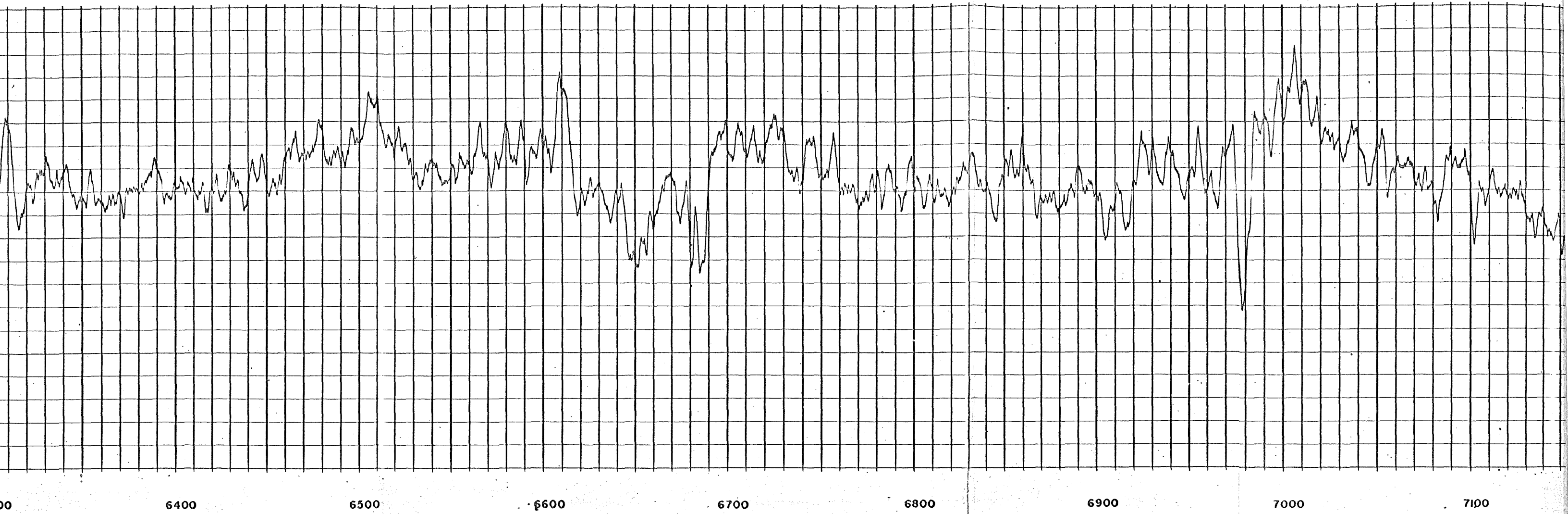




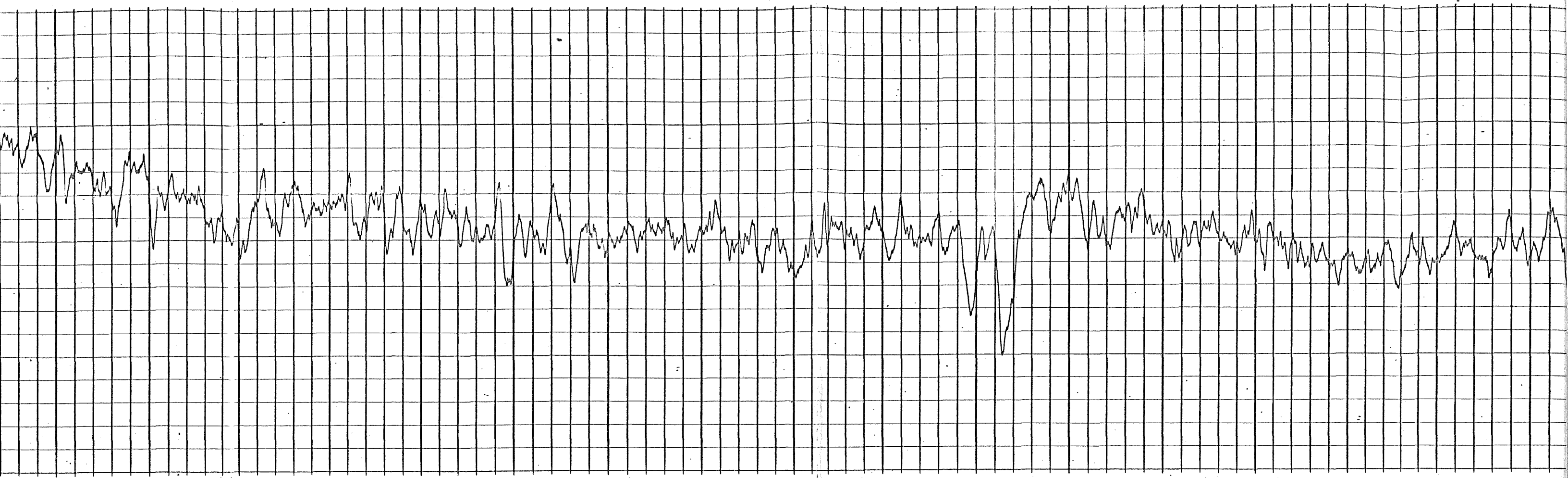


00                      5700                      5800                      5900                      6000                      6100                      6200                      6300                      6400









7100

7200

7300

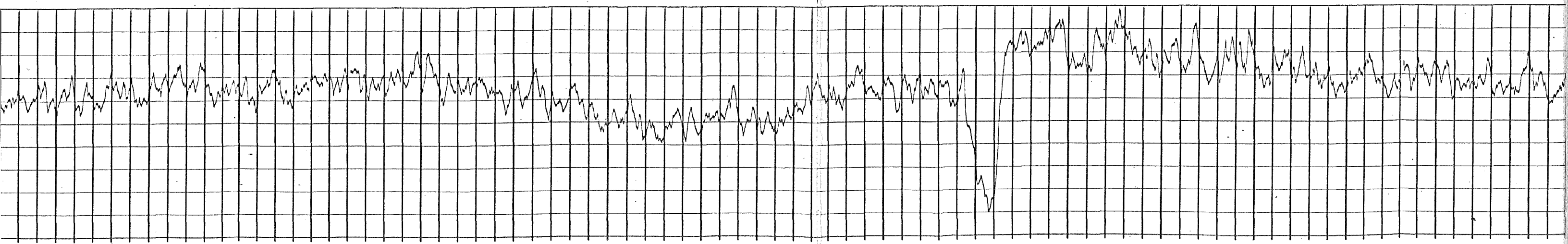
7400

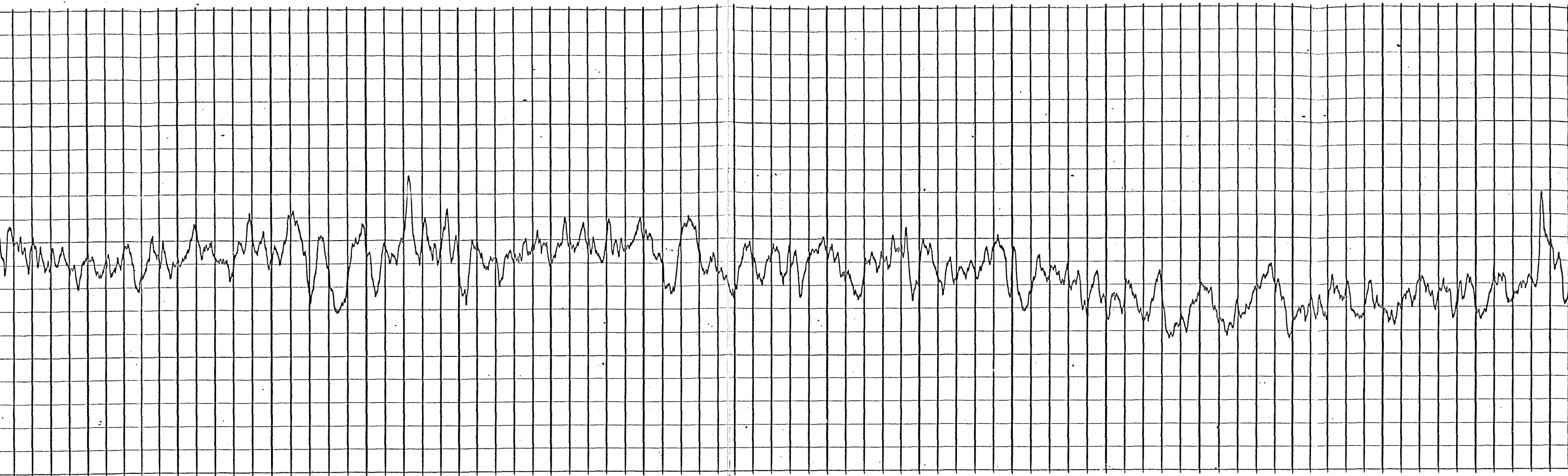
7500

7600

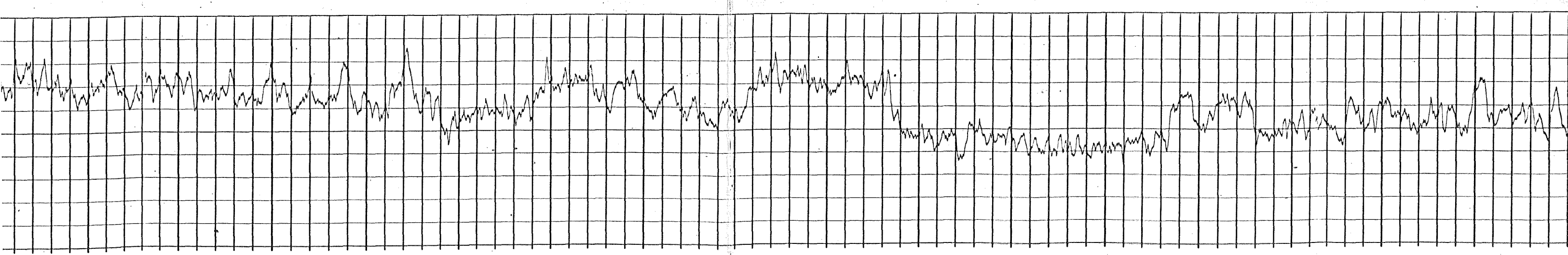
7700

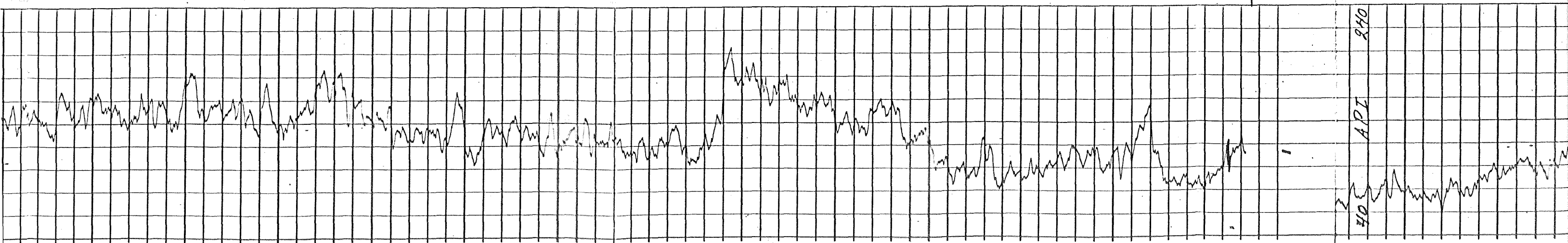
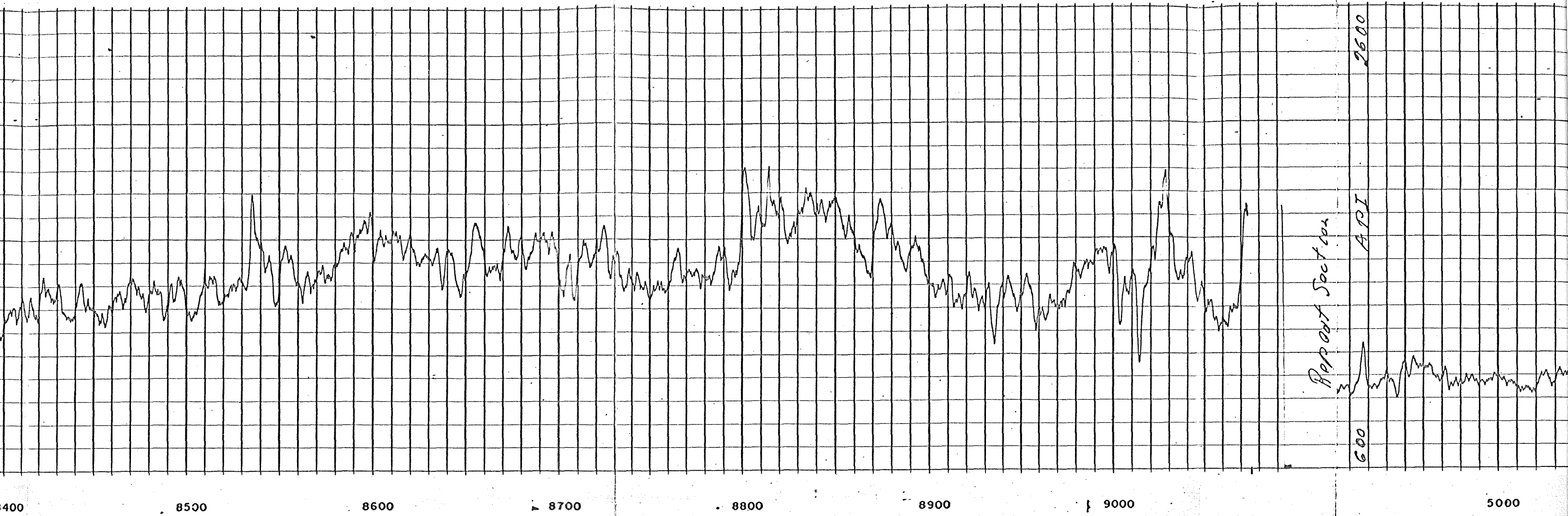
7800

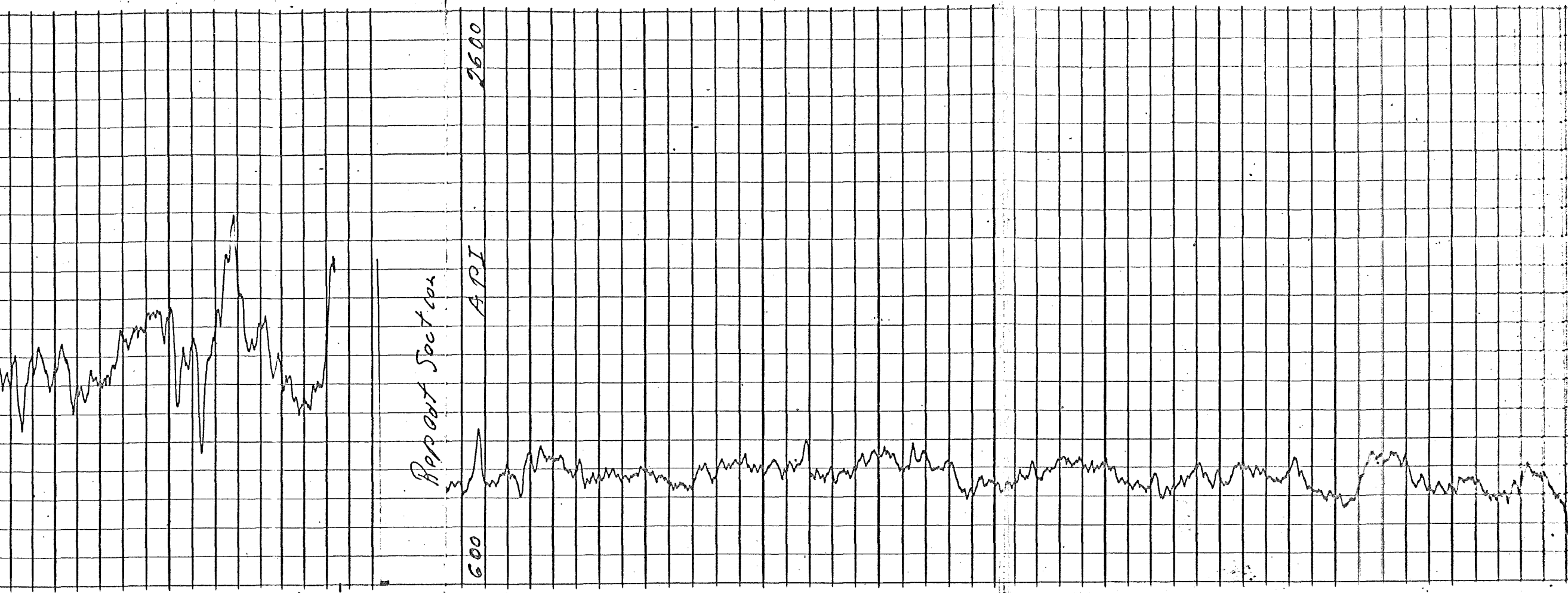




00      7800      7900      8000      8100      8200      8300      8400      8500







9000

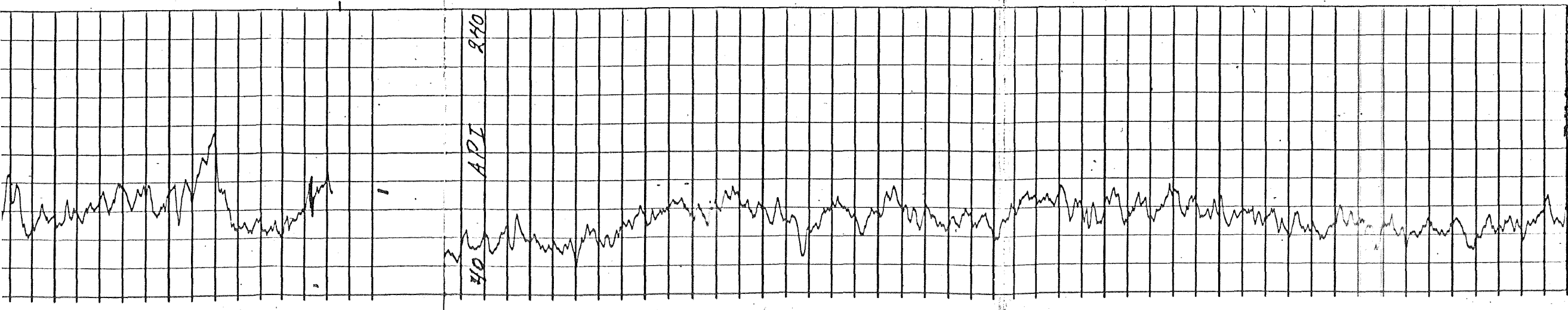
5000

5100

5200

5300

54



40

API

240

RECEIVED

APR 20 1973

O & G CONS. COMM.