

GL02998. 70412

Schlumberger

INDUCTION ELECTRICAL LOG

COUNTY FIELD or LOCATION WELL

COMPANY

COMPANY Geothermal Kinetics Systems Corp. WELL Power Ranches #1 FIELD Wildcat 605 COUNTY Maricopa STATE Arizona LOCATION 1980 N, 660 W of 5th Center NE, SE Sec. 1 Twp. 2 S Rge. 6 E

Permanent Datum: G.L. 1338, Elev. 1338 Log Measured From: KB, 20 Ft. Above Perm. Datum, Elev. K.B. 1358 Drilling Measured From: KB, Elev. D.F. 1338 G.L. 1338

Table with columns: Date (Feb 12, 1973), Run No. (one), Depth-Driller (3115, 3115, 3114, 304), Btm. Log Interval (20" @ 304), Top Log Interval (20" @ 304), Casing-Driller (20" @ 304), Casing-Logger (20" @ 304), Bit Size (1 7/8"), Type Fluid in Hole (S.G.M.), Dens. (10.5, 48), Visc. (6.4), pH (4.8), Fluid Loss (ml), Source of Sample (Rm @ Meas. Temp. 0.116 @ 60°F, Rmf @ Meas. Temp. 0.126 @ 60°F, Rmc @ Meas. Temp. 0.126 @ 60°F, Source: Rmf Rmc), Rm @ BHT (0.054 @ 116°F), Rmf @ BHT (0.054 @ 116°F), Rmc @ BHT (0.054 @ 116°F), Time Since Circ. (4 Hrs.), Max. Rec. Temp. (76.5°F), Equip. Location (7654 Farm), Recorded By (E.L.L.), Witnessed By (Mr. Austin)

OFFICIAL USE ONLY
G & N FIELD
Release Date
COPY

FOLD HERE The well name, location and borehole reference data were furnished by the customer.

Table with columns: Date, Sample No., Type Log, Depth, Scale Up Hole, Scale Down Hole. Rows include Dens., Visc., pH, Fluid Loss, Source of Sample, Rm @ Meas. Temp., Rmf @ Meas. Temp., Rmc @ Meas. Temp., Source: Rmf Rmc, Rm @ BHT, Rmf @ BHT, Rmc @ BHT.

EQUIPMENT DATA table with fields: Run No. (one), Panel No. (N 526), Cart. No. (E 384), Sonde No. (M 605), Mem. Panel No. (B 237), G.R. Cart. No., G.R. Panel No., TTR No., Cent. Device (USED), Stand off - Inches (2.0"), Time Const - Sec., Speed - F.P.M.

REMARKS table with text: Service Order No. - 74231, API Serial No. - , SPA = 2.0. Checkboxes: [X] Surface determined sonde errors used for 6FF40, [] 6FF40 sonde error corrected for inch borehole signal at Rm =, [] 6FF40 zero set in hole at depth of feet.

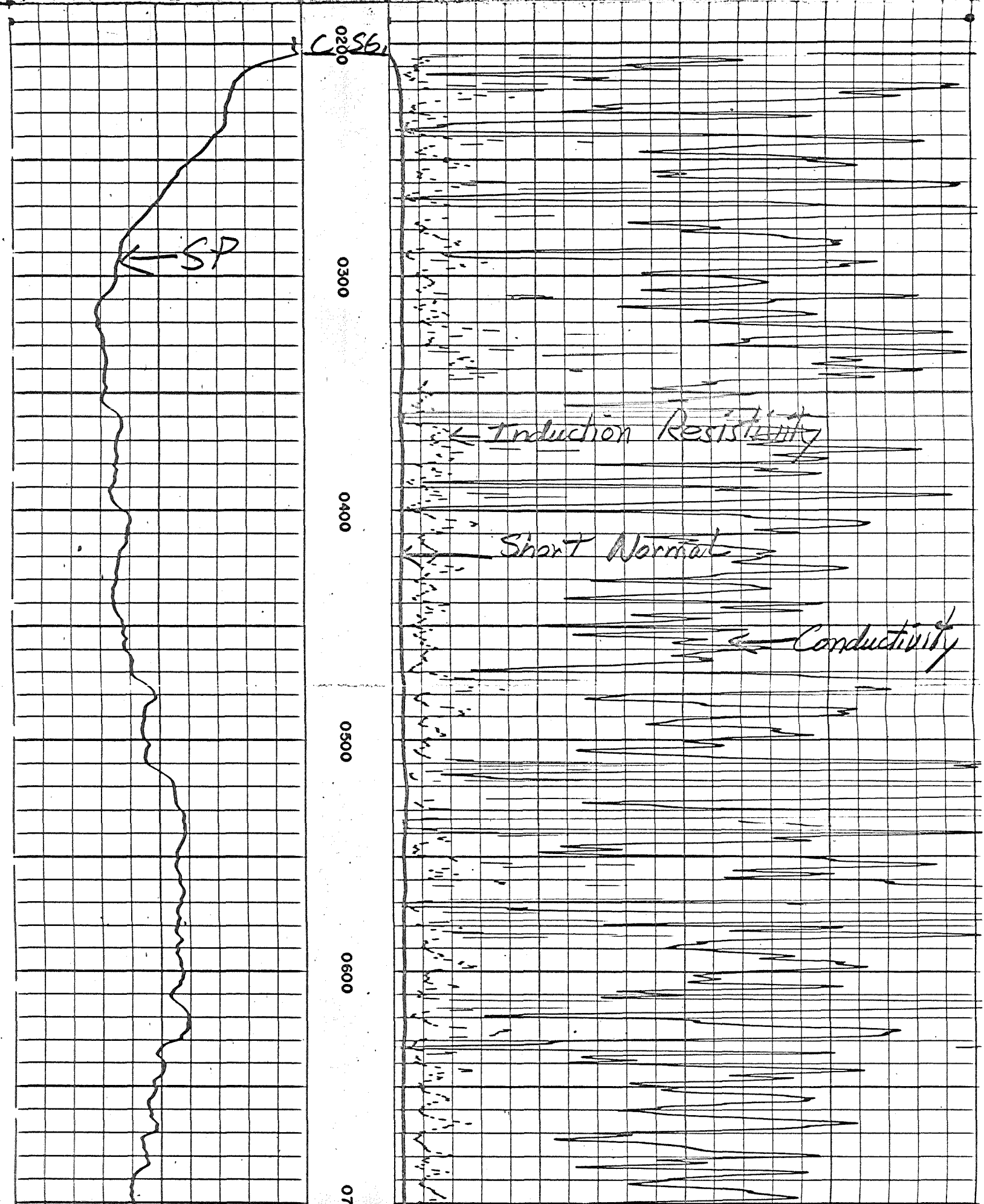
CALIBRATION DATA table with columns: CALIBRATION, BACKGND. CPS., SOURCE CPS., GAIV INCR. DIVISION, SFNS TAP (FOR CAL.), SENS TAP (RECORD), TIME CONST.

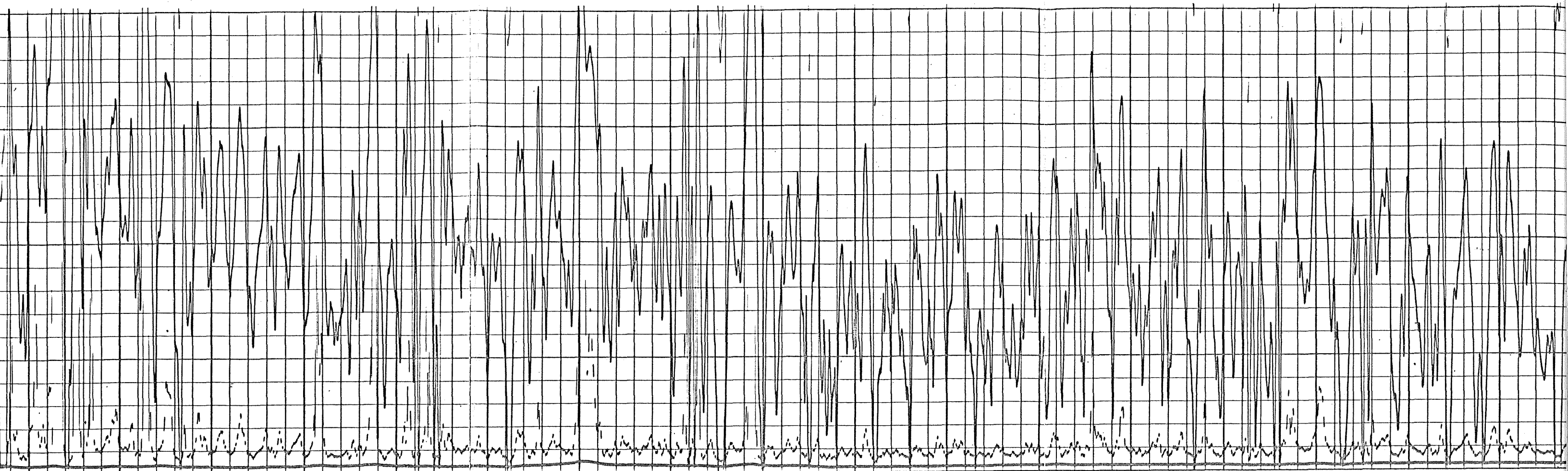
All interpretations are opinions based on inferences from electrical or other measurements and we cannot, and do not guarantee the accuracy or correctness of any interpretations, and we shall not, except in the case of gross or willful negligence on our part, be liable or responsible for any loss, costs, damages or expenses incurred or sustained by anyone resulting from any interpretation made by any of our officers, agents or employees: These interpretations are also subject to Clause 7 of our General Terms and Conditions as set out in our current Price Schedule.

SPONTANEOUS-POTENTIAL MILLIVOLTS, DEPTHS, CONDUCTIVITY MILLIMHOS/M = 1000 / OHMS. M^2/M, RESISTIVITY. Includes handwritten values: 10, 400, 600, 400.

All interpretations are opinions based on inferences from electrical or other measurements and we cannot, and do not guarantee the accuracy or correctness of any interpretations, and we shall not, except in the case of gross or willful negligence on our part, be liable or responsible for any loss, costs, damages or expenses incurred or sustained by anyone resulting from any interpretation made by any of our officers, agents or employees. These interpretations are also subject to Clause 7 of our General Terms and Conditions as set out in our current Price Schedule.

SPONTANEOUS-POTENTIAL MILLIVOLTS	DEPTHS	CONDUCTIVITY MILLIMHOS/M = $\frac{1000}{\text{OHMS. M}^2/\text{M}}$
$\frac{10}{- \quad \quad \quad +}$		6FF40 INDUCTION 400 _____ 0 500 _____ 400
		RESISTIVITY OHMS. M ² /M
		A - 16" - M SHORT NORMAL 0 _____ 50 0 _____ 500
		INDUCTION 0 _____ 50 0 _____ 500





0600

0700

0800

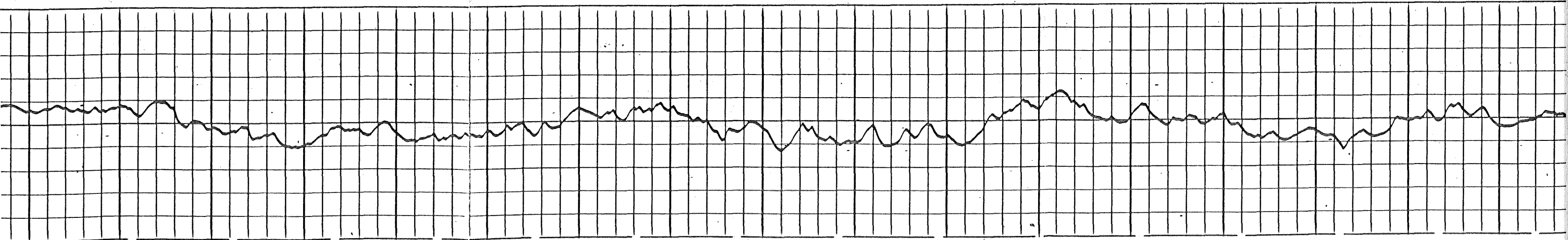
0900

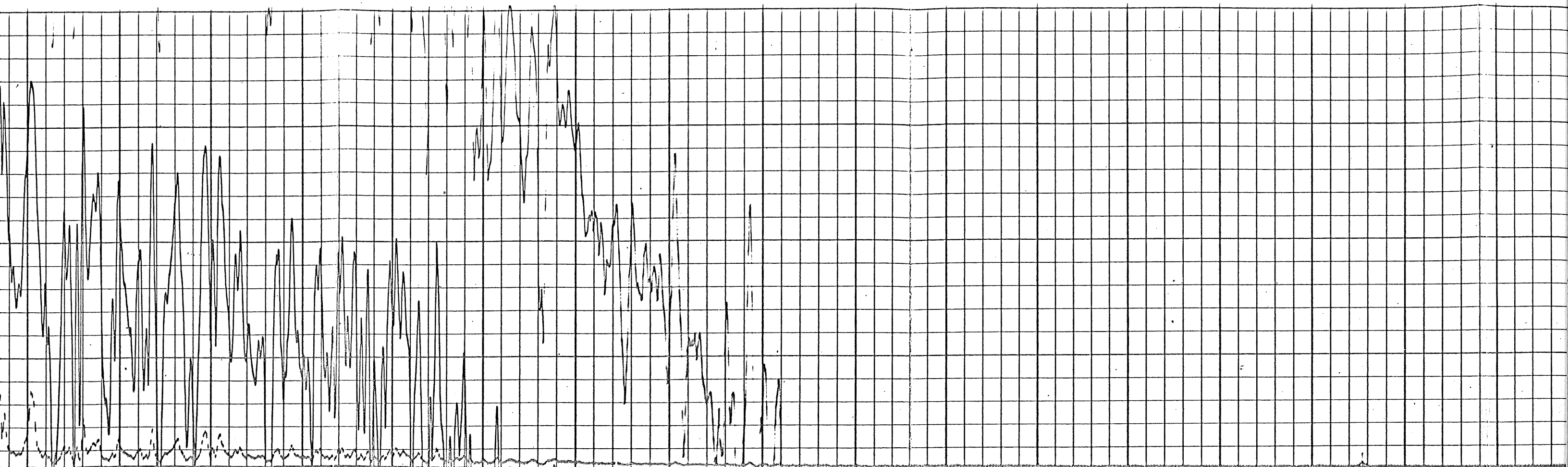
1000

1100

1200

1300





1300

1400

1500

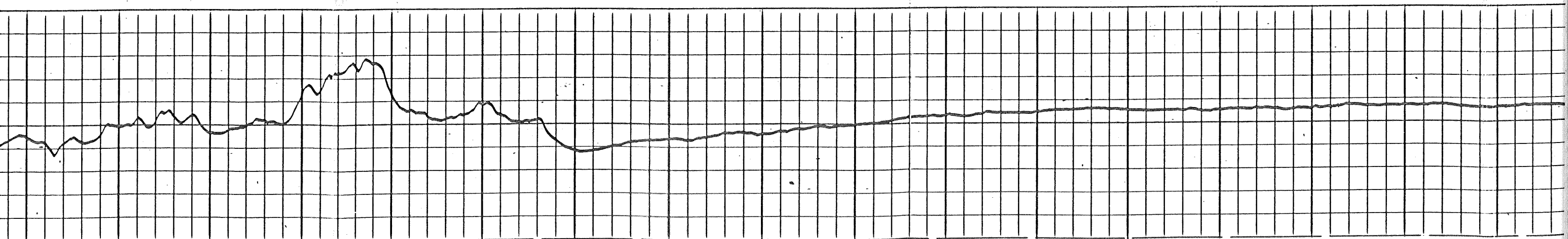
1600

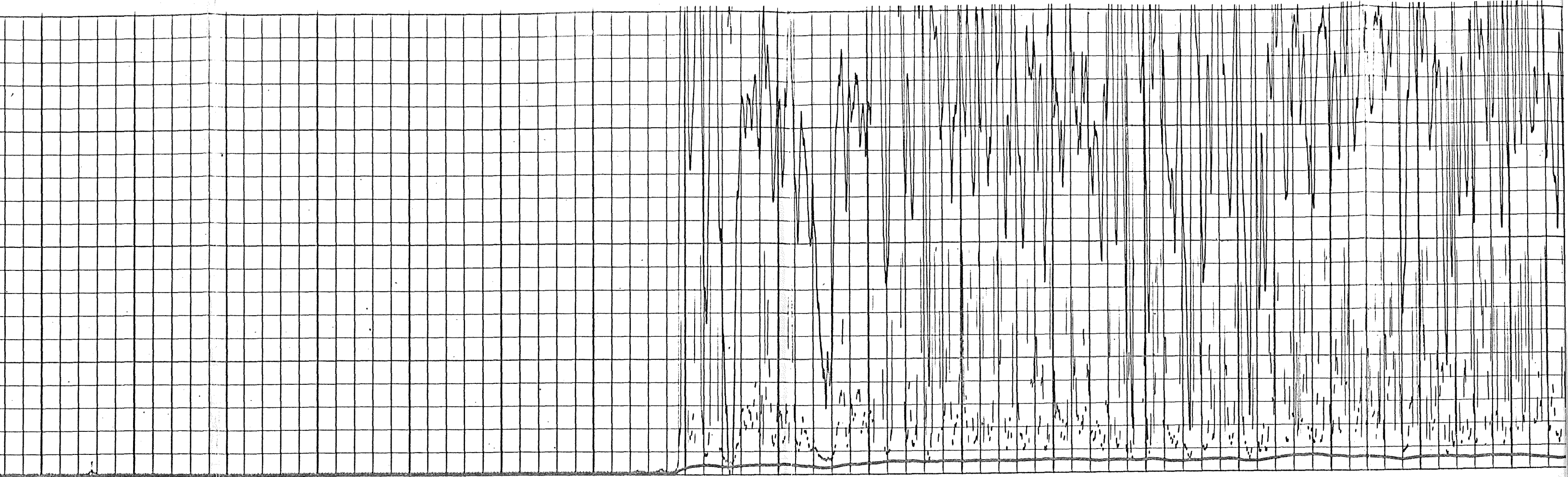
1700

1800

1900

2000





2000

2100

2200

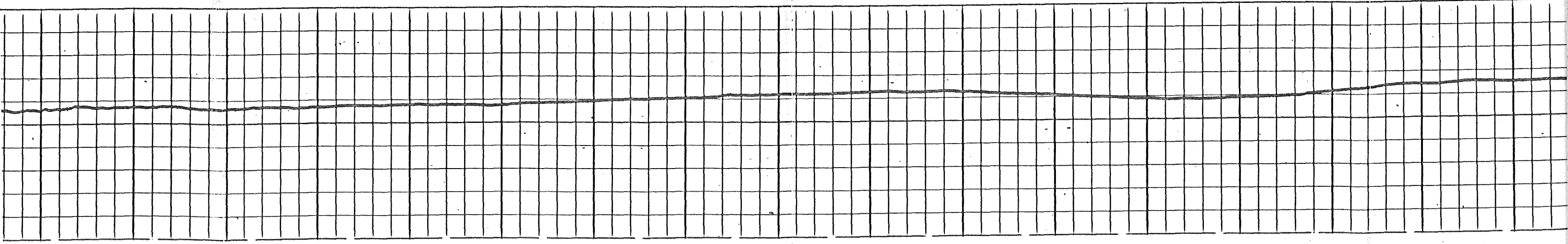
2300

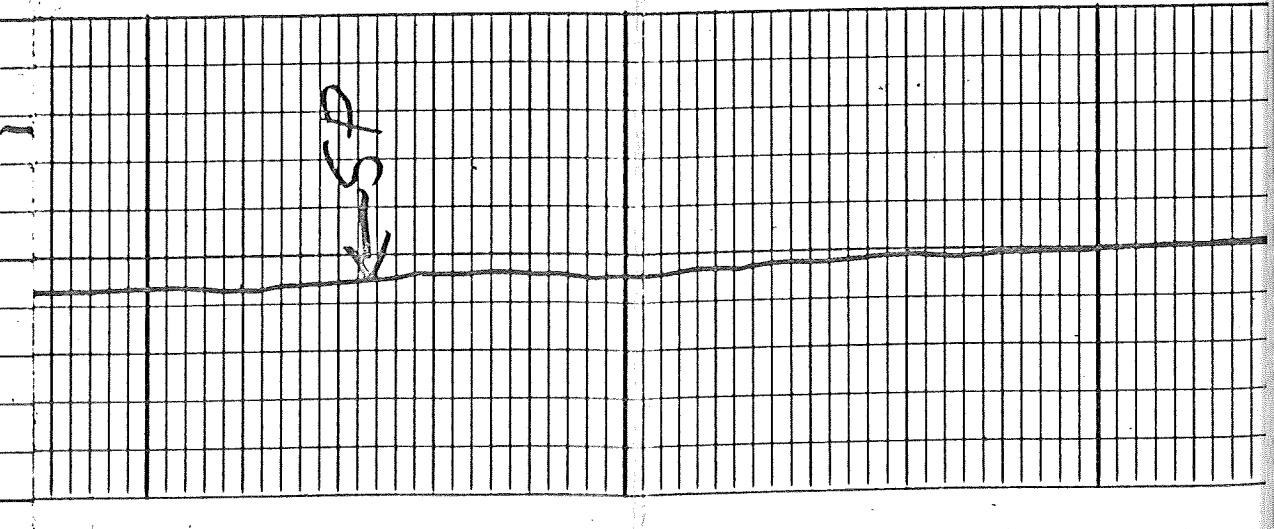
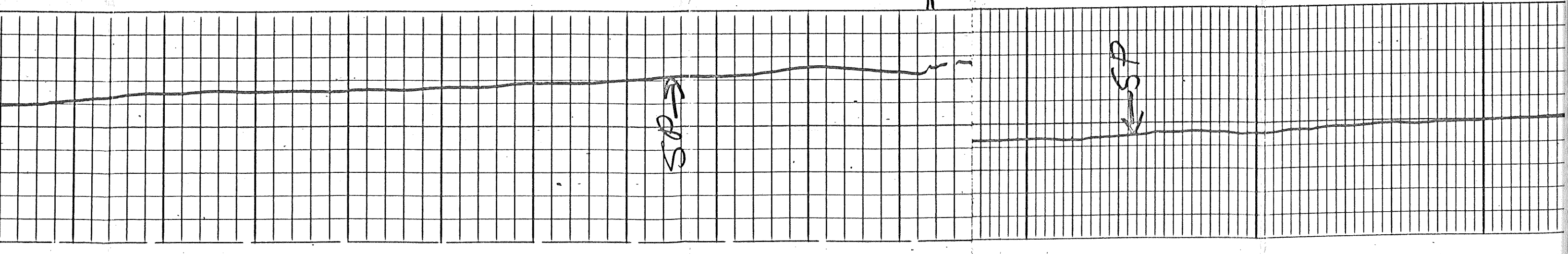
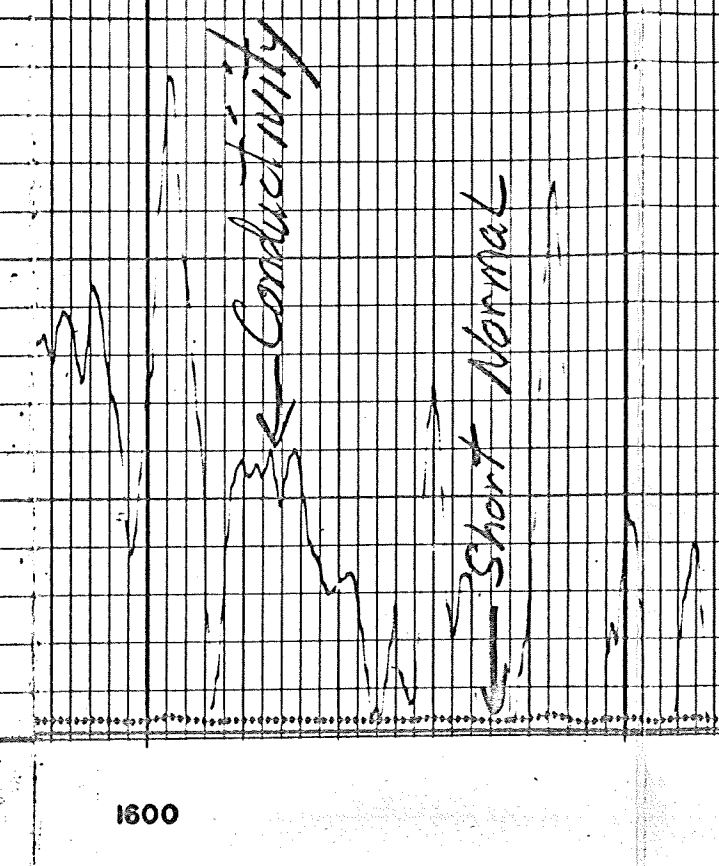
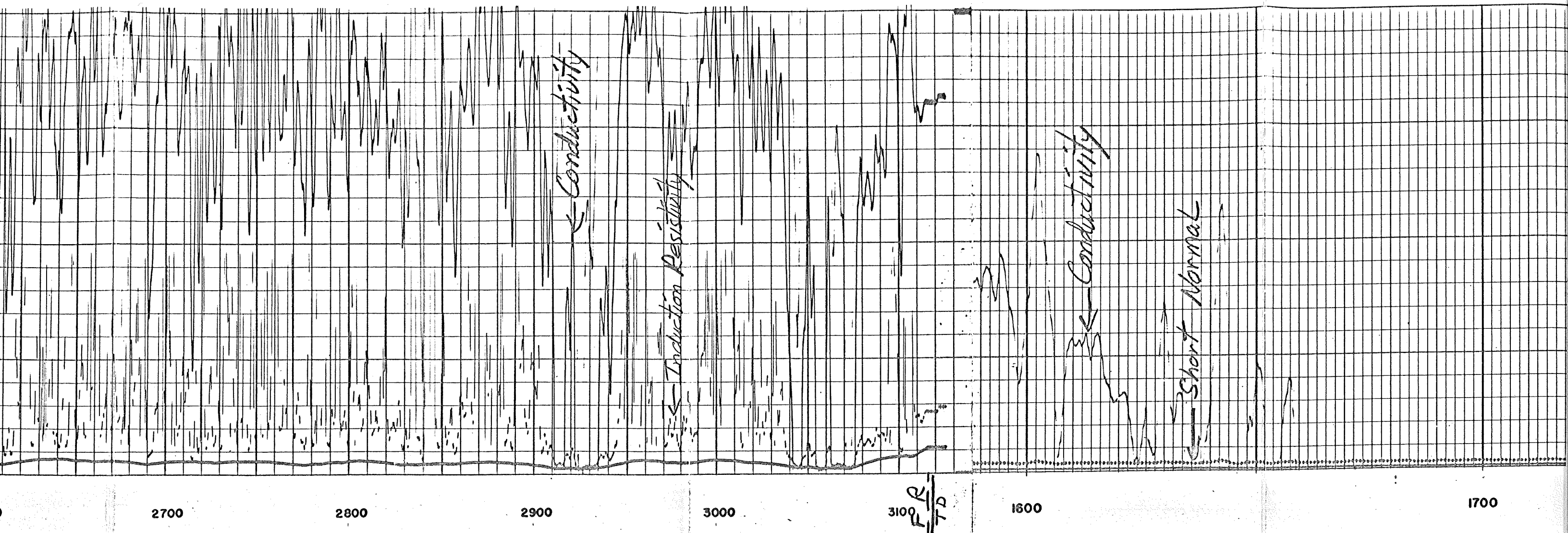
2400

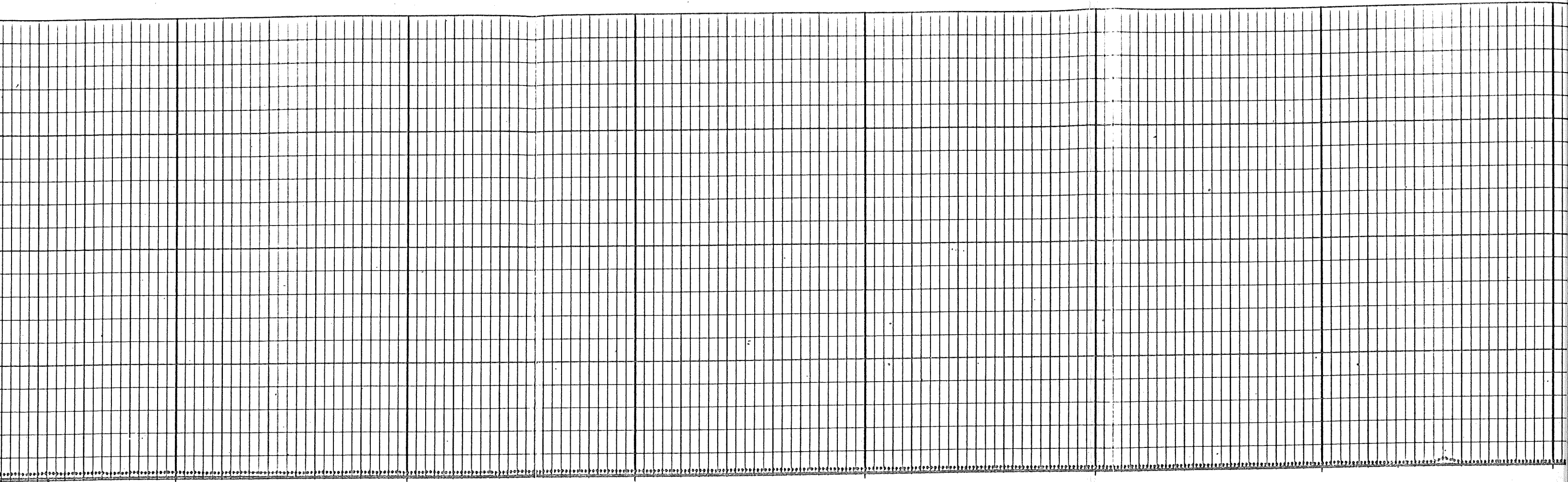
2500

2600

2700





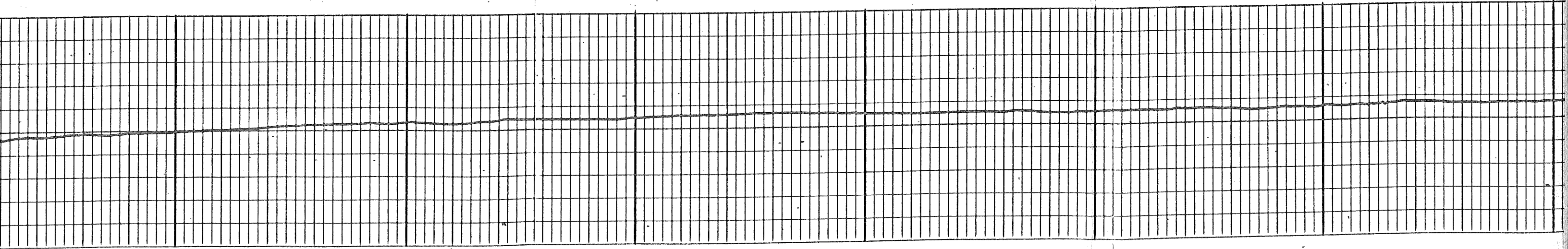


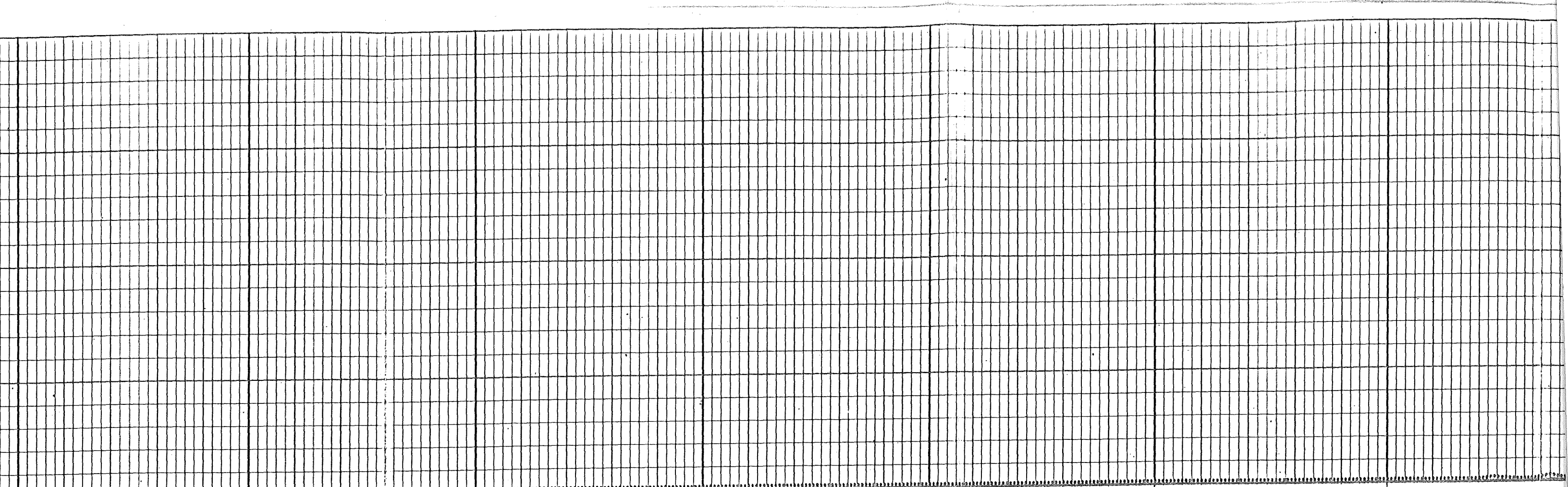
1700

1800

1900

2000

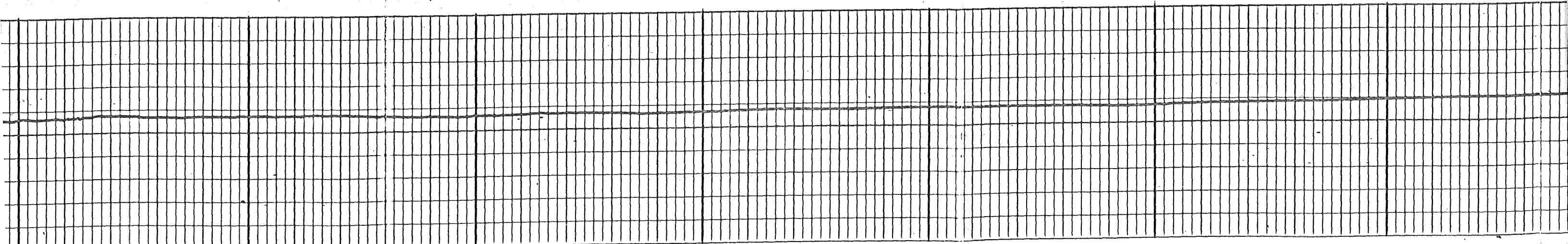




2000

2100

2200



2300

2400

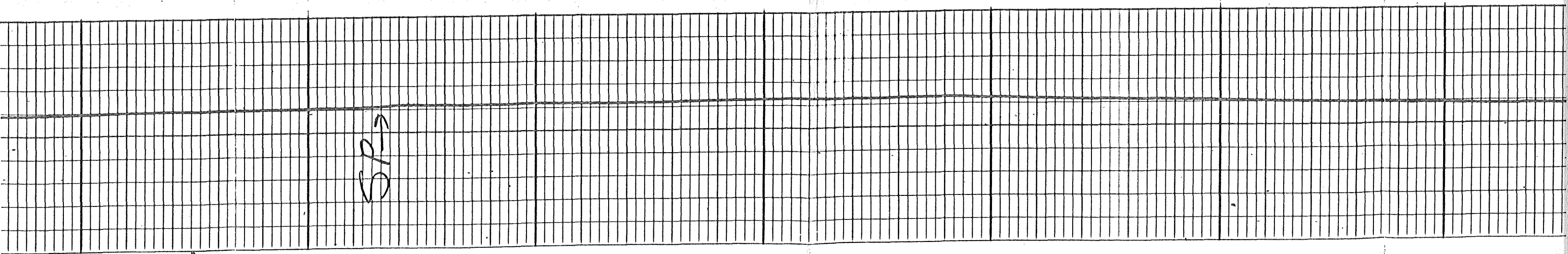
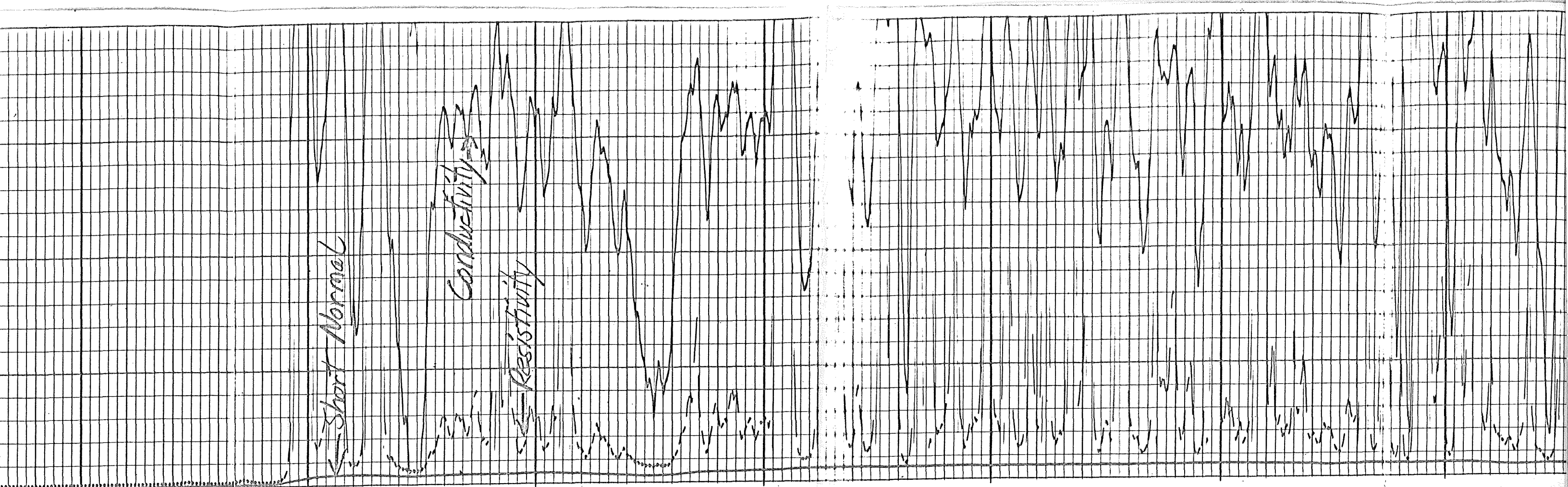
2500

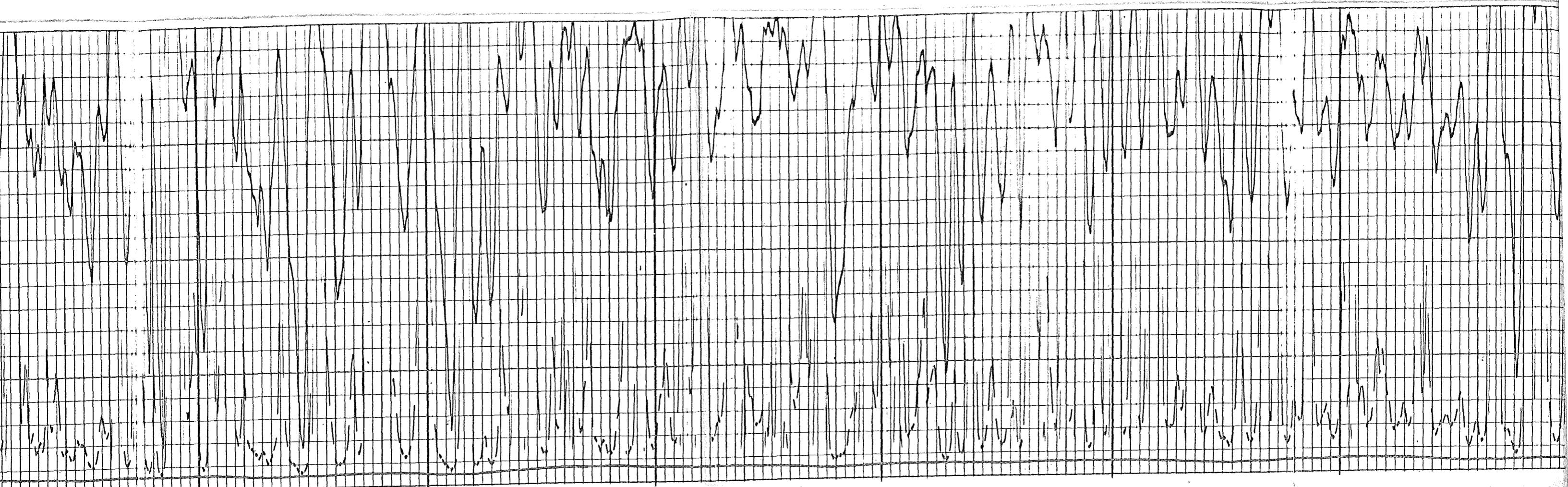
Short Normal

Conductivity

Resistivity

SP →

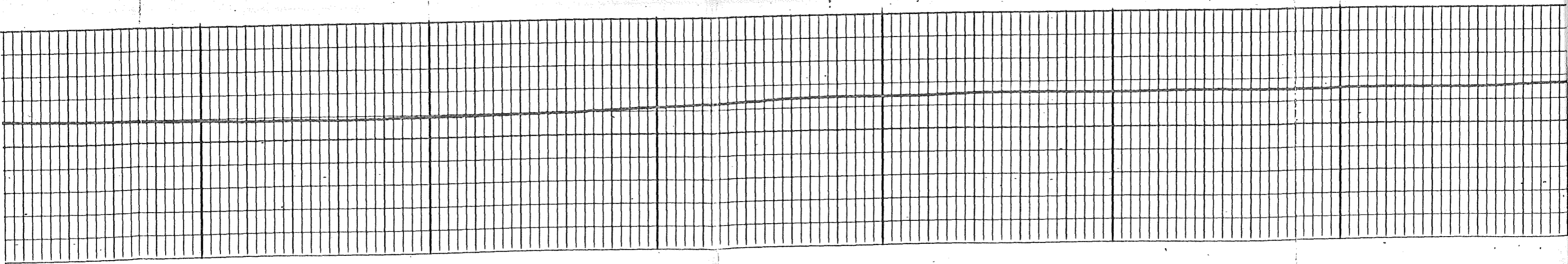


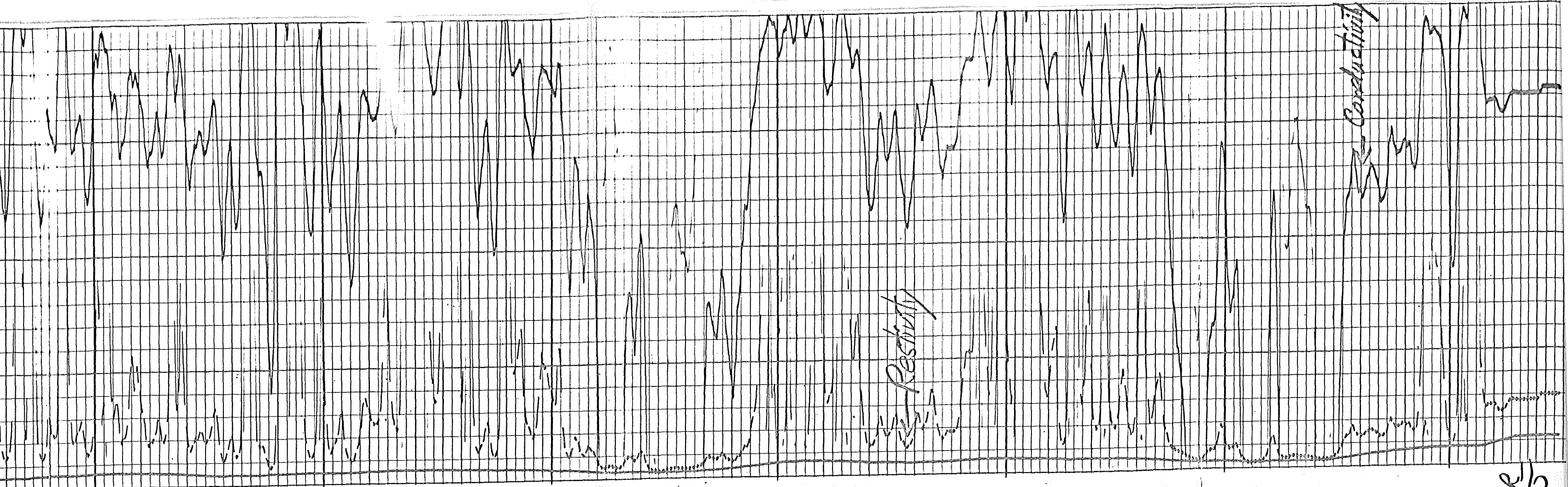


2600

2700

2800





2800

2900

3000

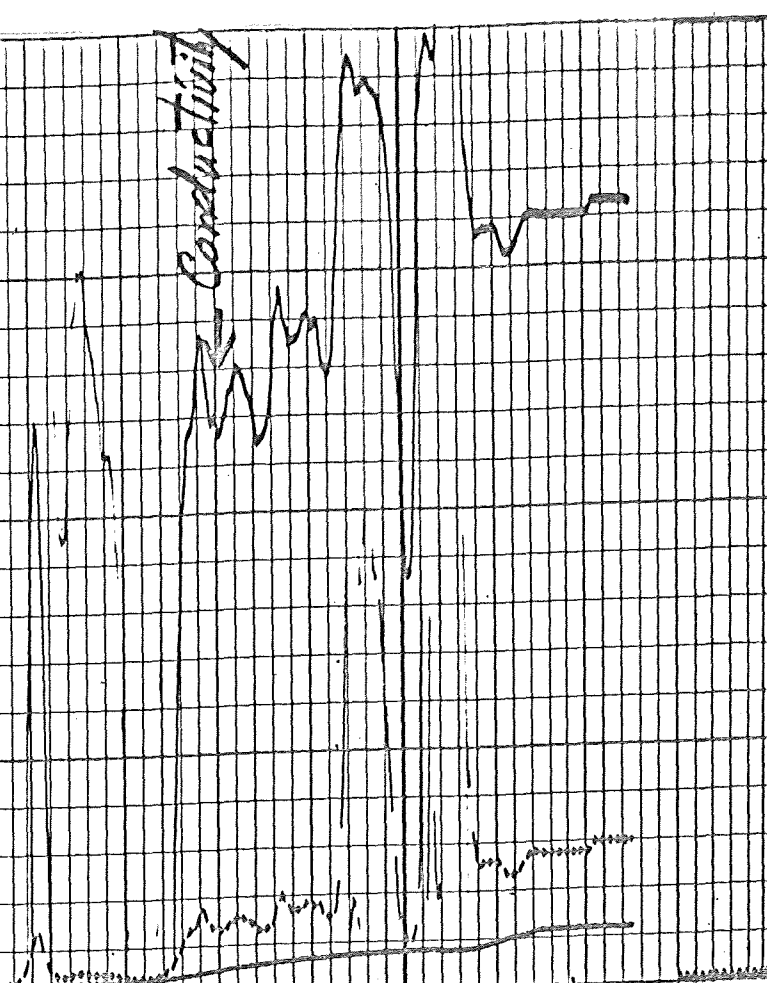
3100

Resistivity

Conductivity

SP. ↑

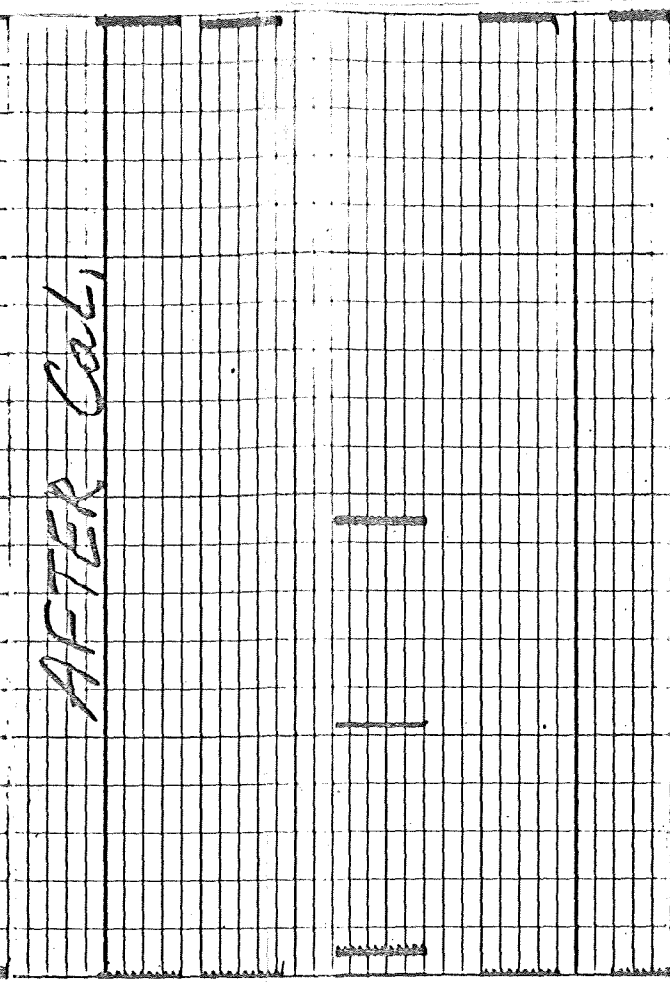
$\frac{FR}{TD}$



Conductivity

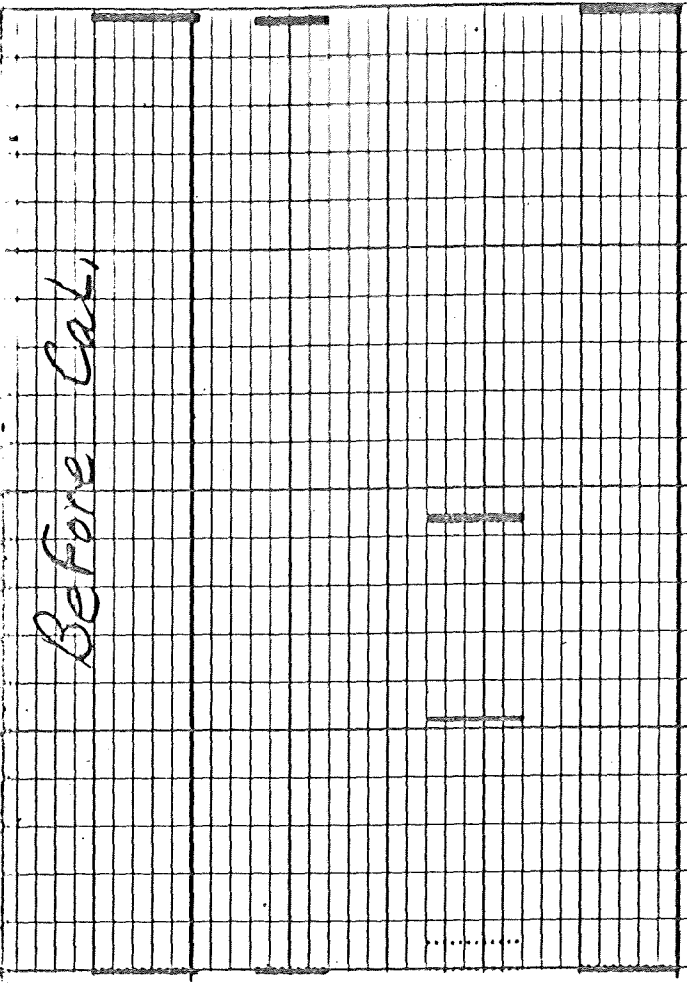
3100

$\frac{FR}{TD}$



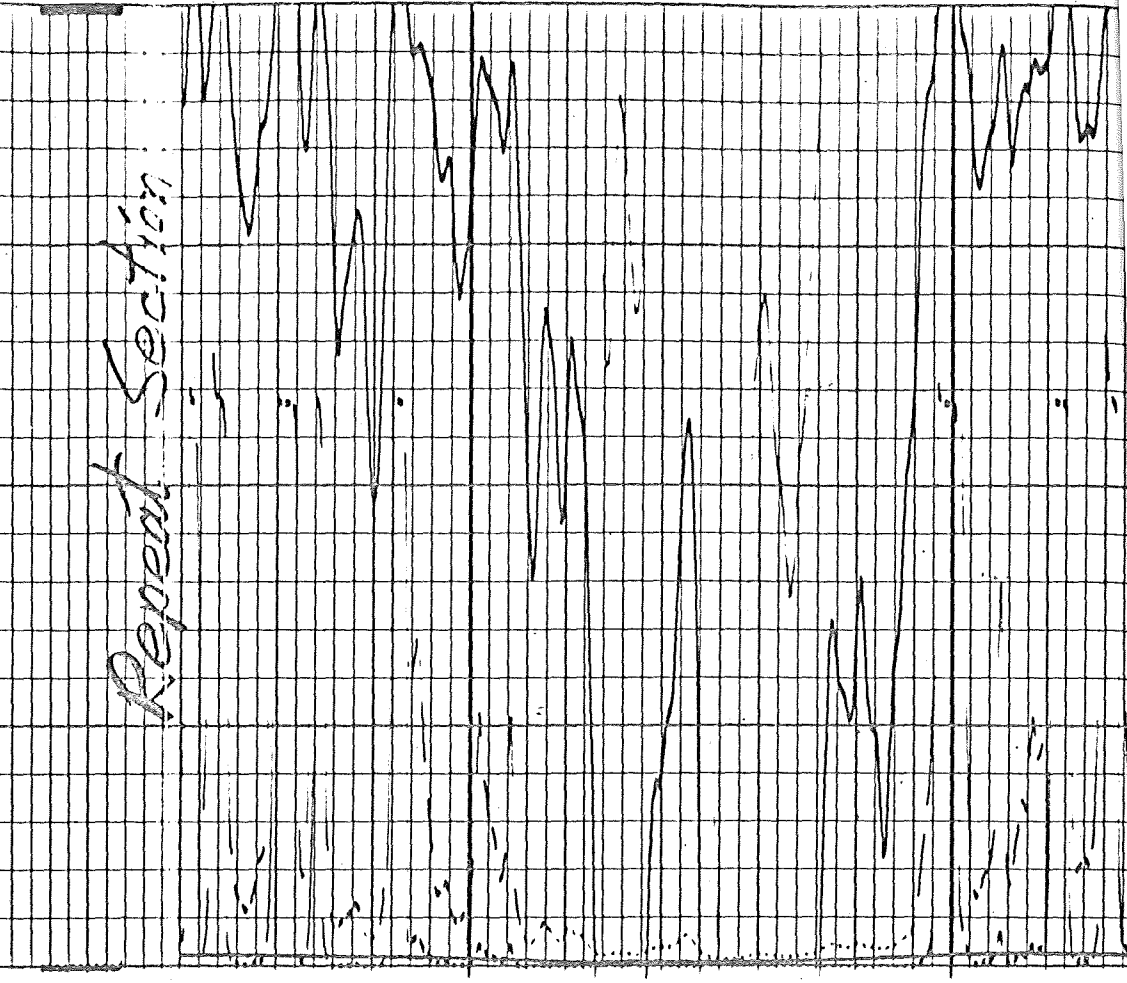
AFTER Cal.

0300



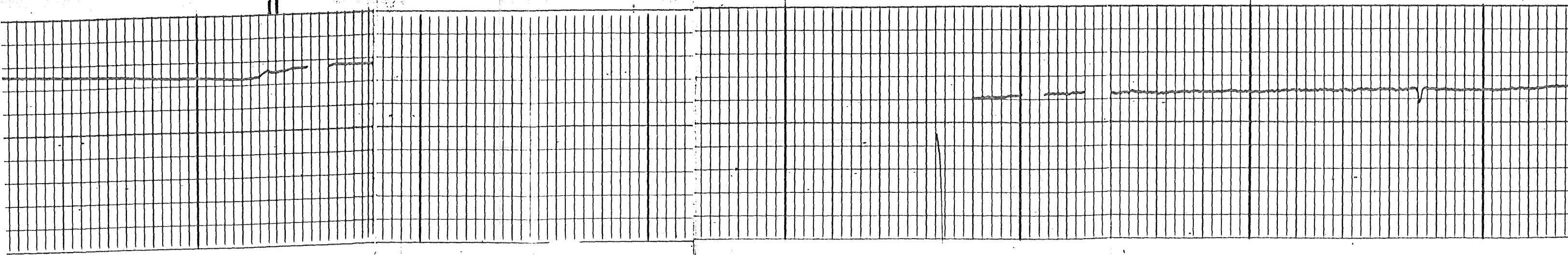
Before Cal.

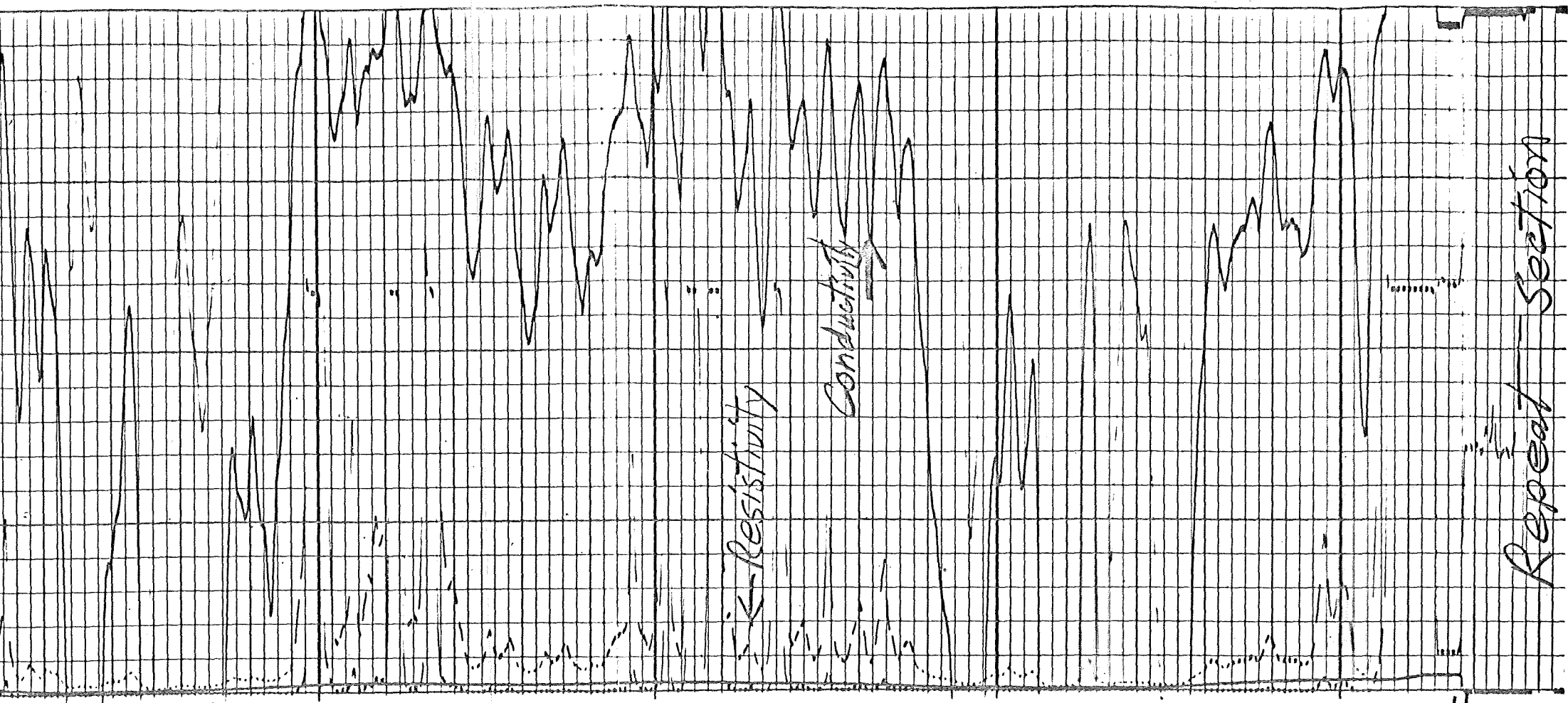
2800



Repeat Section

2900

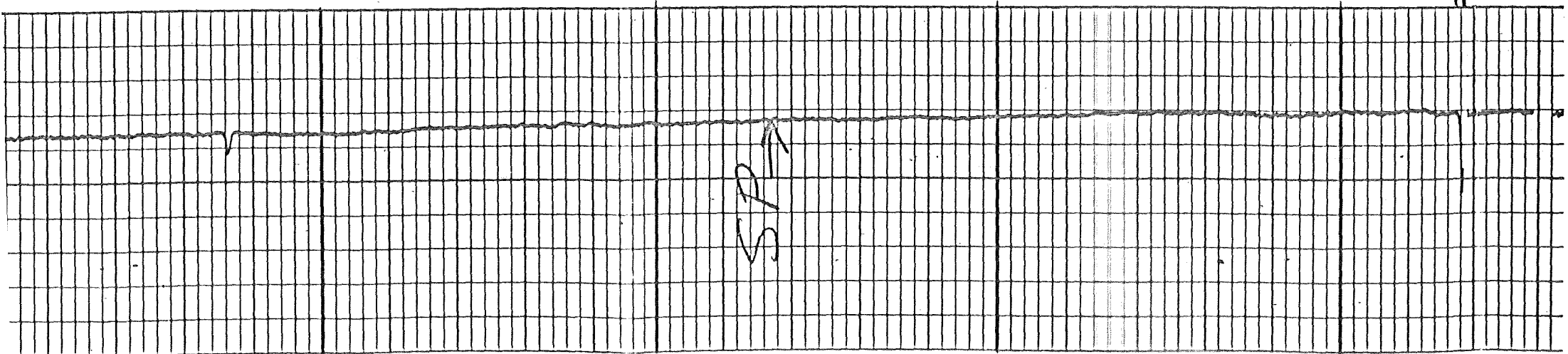




3000

3100

FR
TD



SP