

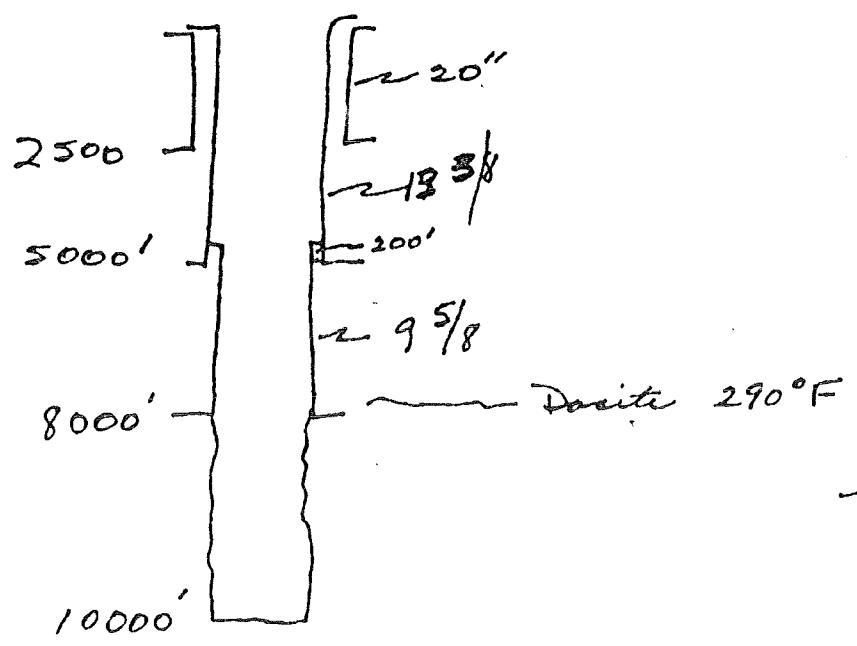
Williams AFB

10,000' Well (New)

Site Prep		27K
Req	mob - demo	450K
	\$7K/da for 60 da	420K
Casing	20" K55 Butt 133#	\$5/ft 2500'
	13 3/8" K55 Butt 68#	25/ft 5000'
	9 5/8" N-80 Butt 47#	23/ft 8000' (3200')
Cog Hardware		74K
Senior Hanger		10K
Wellhead		15K
Mud logger		75K
Mud to 8000'		50K
Welding		100K
Shock sub - jers		5K
Cog crews		15K
Stabilizers		15K
Cement		20K
Bits		150K
Logs		130K
Coring (3) only, dense BH		70K
Testing		15K
		30K

1933 K
 386 K
 2319 K

+2090



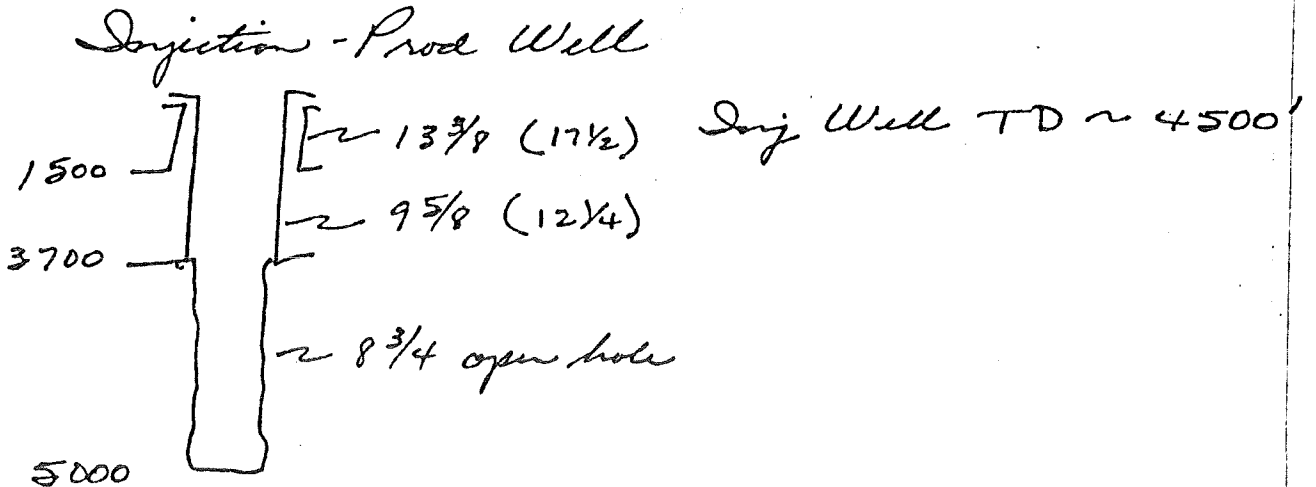
use mud to 8000'
 8000-10,000 H₂O

Williams AFB

5,000' Well Production - Injection

Site Prep		20K
Csg 13 7/8 1500'	K55 STC 545#	30K
9 5/8 3700'	K55 Butt 26#	63K
Cement 13 7/8		13K
9 5/8		17K
Csg Hardware		30K
Wellhead		7K
Rig 5k/da 35da		50K
mob - demob		175K
Drlg supervision		200K *
Mud		13K
Shock sub - jara		35K
Csg crews		5K
Stabilization		10K
Bits		10K
Logs		50K
Coring (1)		35K
Testing		5K
		20K
		758K

* Mob - demob could be less w/ a drive-in rig



Old Well ReWorked

Cost of Old Wells

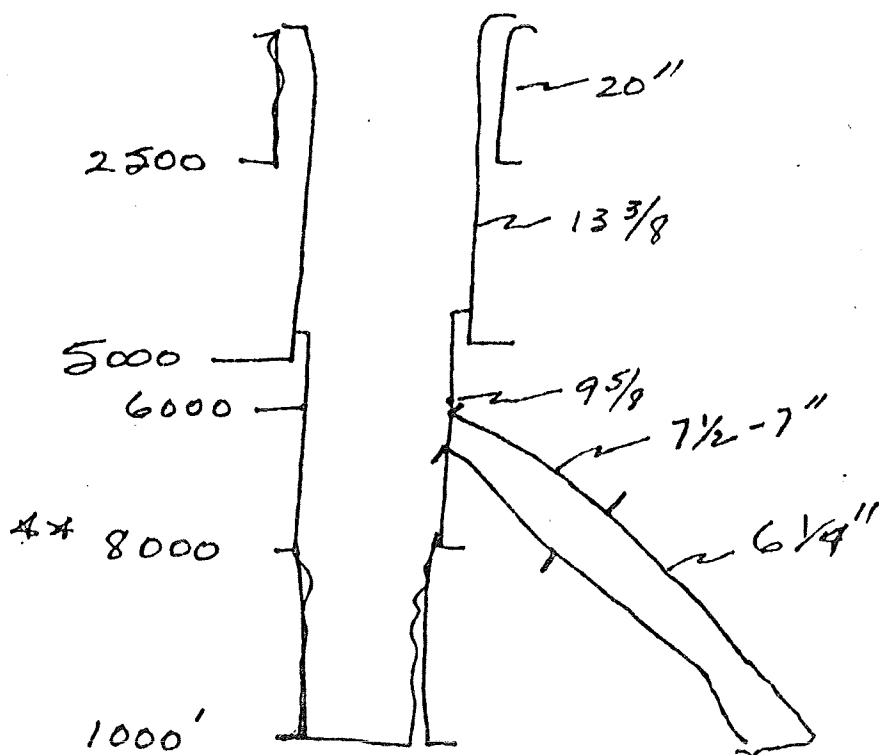
1,400 K

Logs		15 K
Directional Drily		25 K
Bits		18 K
Csg 7" - 2000'	15/ft	30 K
Cement		50 K
Rig (10,000' cap.)	20da # 7,000/da mob-dimob	140 K
Drily Supervision		350 K
		7 K
		<u>635</u>

2 wells

* 2,670 K

+ Royalties



* Kick off in 13 3/8 and then could run larger casing 9 5/8 w/ 8 3/4 open hole. Cost could be 100K more.

** 8000' - BHT 290° F