

GRC - 1991

Power Plant Database Listing

Back up to Item #1

GEOHERMAL POWER PLANTS

STATE/AREA	OWNER	LOCATION	NAME	AGE	MW	
California, North	PG&E	The Geysers	#3	24	27	
	PG&E	"	#4	23	27	
	PG&E	"	#5	20	53	
	PG&E	"	#6	20	53	
	PG&E	"	#7	19	53	
	PG&E	"	#8	18	53	
	PG&E	"	#9	18	53	
	PG&E	"	#10	18	53	
	PG&E	"	#11	16	106	
	PG&E	"	#12	12	106	
	PG&E	"	#13	11	134	
	PG&E	"	#14	11	114	
	PG&E	"	#15	12	57	
	PG&E	"	#16	6	113	
	PG&E	"	#17	9	113	
	PG&E	"	#18	8	113	
	PG&E	"	#20	6	113	
		Coldwater Creek	"	Coldwater Creek	3	120
		SMUD	"	SMUD GEO #1	8	72
		NCPA	"	NCPA #1	8	106
	NCPA	"	NCPA #2	5	106	
	Mission Power	"	Aidlin Project	2	20	
	Santa Fe Geothermal	"	Santa Fe #1	7	80	
	Calpine Corp.	"	Bear Canyon	2	20	
	"	"	West Ford Flat	4	27	
California East	Pacific Energy	"	Mammoth Pacific #1	7	7	
	"	"	PLES Unit #1	1	10	
	"	"	Mammoth Pacific #2	1	10	
	Wineagle Developers	Wendel	Wineagle	6	1	
	TransPacific Eng	Amedee	Wendel-Amedee unit	3	2	
	Geoproducts, Inc.	Wendell	Honey Lake	3	30	
	Central	Cal Energy Co.	Coso	BLM West	2	28
		"	"	Navy #1 Unit #1	4	30
		"	"	" Unit #2	3	25
		"	"	" Unit #3	3	25
"		"	" Unit #4	2	30	
"		"	" Unit #5	2	25	
"		"	" Unit #6	2	25	
"		"	BLM East Unit #1	3	24	
	"	" #2	3	24		
South	UNOCAL	Salton Sea	Salton Sea Unit #2	1	18	
	"	Salton Sea	Salton Sea Unit #3	2	50	
	"	Salton Sea	Salton Sea Unit #1	9	10	
	OESI Purp Corp.	East Mesa	Ormesa 1	5	24	

GEOHERMAL POWER PLANTS

STATE/AREA	OWNER	LOCATION	NAME	AGE	MW
Central South	.	.	Ormesa 2	3	17
.	.	.	Ormesa 1E	3	8
.	.	.	Ormesa 1H	3	8
.	Mission Energy	East Mesa	GEM 1	11	13
.	Mission Energy	East Mesa	GEM 2 and 3	2	40
.	Unocal	Salton Sea	Salton Sea Unit #1	9	10
.	Heber Geothermal	Heber	Heber Flash 1	6	47
.	Magma	Salton Sea	Leathers 1	2	40
.	.	.	Del Ranch	2	40
.	.	.	Elmore 1	2	40
.	.	.	Vulcan	5	38
Nevada West	Caithness	Steamboat	Caithness	3	11
.	Far West Corp.	.	Steamboat Geo 1	6	6
.	Calpine	Fernley	Desert Peak	6	9
.	OESI Purp. Corp.	Gerlach	Empire Geo. Proj.	4	3
.	.	Fallon	Soda Lake 1	4	2
.	.	.	Soda Lake 2	1	13
.	.	.	Soda Lake II	6 mos.	13
.	.	.	Stillwater Project	2	13
Nevada East	Oxbow	Battle Mtn.	Beowawe	6	15
.	.	Dixie Valley	Dixie Valley	3	50
Nevada West	Tads Enterprises	Mabuska	Tad's Enterprises	7	2
Utah Central	City of Provo	Cove Fort	Cove Fort GEO 1	6	3
.	.	.	Steam 2	2	8
.	.	.	Topping Turbin	3	1
.	Pacific Corp.	Milford	Blundell Unit 1	7	20

OPERATING GEOTHERMAL POWER PLANTS

IMPERIAL VALLEY

<u>FIELD AND PLANT NAME</u>	<u>GROSS MWe</u>
SALTON SEA	
Unocal 1	12
Unocal 2	19
Unocal 3	50
Vulcan	40
Del Ranch	38
Elmore	38
Leathers	38
EAST MESA	
McCabe 1	13
GEM 2	22
GEM 3	22
Ormesa I	30
Ormesa II	20
Ormesa IE	8
Ormesa IH	6
HEBER	
Dual Flash	52

OPERATING GEOTHERMAL POWER PLANTS

BASIN AND RANGE

<u>FIELD AND PLANT NAME</u>	<u>GROSS MWe</u>
COSO	
Navy 1	30
Navy 31	50
BLM East	48
BLM West	28
Navy 2	80
MAMMOTH	
Mammoth-Pac 1	12
Mammoth-Pac 2	15
Ples 1	15
WENDEL-AMEDEE	
Wineagle	0.7
Amedee	2
Honey Lake	30
WABUSKA	
Wabuska	1.8
BEOVAWE	
Beowawe	17
DESERT PEAK	
Desert Peak	10
STEAMBOAT HOT SPRINGS	
Farr West	9
Caith/Sequa	13
SAN EMIDIO	
Empire	4.7
STILLWATER	17
SODA LAKE	3.6
ROOSEVELT HOT SPRINGS	
Blundell	23.5
COVE FORT	
Plant 1	4.2
Steam Addition	2
Bonnett	8.5

PP Name	PG&E #3	PPCycleType	D STEAM
PP Site	CALIFORNIA	Inlet Temp	342 Degrees F
Status	0	Av Well Depth	0 Feet
OperDate	04/28/67	No. ProdWells	0
Nation	USA	No. Inj.Wells	0
SubDivision	GEYSERS	Fail AbdWells	0
Res Owner	PG&E	Total Wells	0
Res Devel	UNOCAL/MAGMA/THERMAL	R_C Sludge	0 Tons per Month
A and E	N/A	FinancOrganiz	0
PP Owner	PG&E	PwrSalePrice	????? \$US per KWH
Turb Source	ELLIOT/CARRIER/ELMAC	PPCmpltnYear	1967
PwrPurchaser	PG&E	PPShutDownYr	0
PPContractor	PG&E	GenrtrSource	ELLIOT/CARRIER/ELMC
PPOwnrCntact	GLEN HORTON	ResOwnrCntact	GLEN HORTON
His Employer	PG&E	His Employer	PG&E
His Phone	707/577-7062	His Phone	707/577-7062
His Fax	0	His FAX	0
His TELEX	0	His TELEX	0
Gross Mw	28	PP Operator	PG&E
Net Mw	27	GathSystCost	0 \$US Millions
TotWellProd	0 KLbs/hr.	Av Well Life	??? Years
TDS	0 PPM	H2S Sludge	0 Tons per Month
PP Lifetime	30 Years	Power Sales	0 KWH per Yea
Inlet Pres	0 psig	PowerSalesYr	????
InitResTemp	342 Degrees F	InitialTotNCG	0 Weight %
TotExplCost	0 \$US Millions	Initial CO2	???? Weight %
Av Well Cost	0 \$US Millions	Initial H2S	???? Weight %
Subsurf Area	0 Sq.Km	CurrentTotNCG	0 Weight %
Tot PP Cost	4 \$US Millions	CurrentCO2	???? Weight %
TotProjCost	0 \$US Millions	CurrentH2S	???? Weight %
Availability	0 %	NCGTrtmtSyst	N/A
Yr. of Avail	0		

PP Name	PG&E #4	PPCycleType	D STEAM
PP Site	CALIFORNIA	Inlet Temp	342 Degrees F
Status	0	Av Well Depth	0 Feet
OperDate	11/02/68	No. ProdWells	3
Nation	USA	No. Inj.Wells	1
SubDivision	GEYSERS	Fail_AbdWells	0
Res Owner	PG&E 95%	Total Wells	4
Res Devel	UNOCAL/MAGMA/THERMAL	R_C Sludge	0 Tons per Month
A and E	N/A	FinancOrganiz	N/A
PP Owner	PG&E	PwrSalePrice	????? \$US per KWH
Turb Source	ELLIOT/CARRIER/ELMAC	PPCmpltnYear	1968
PwrPurchaser	PG&E	PPShutDownYr	0
PPContractor	PG&E	GenrtrSource	ELLIOT/CARRIER/ELMC
PPOwnrCntact	GLEN HORTON	ResOwnrCntact	GLEN HORTON
His Employer	PG&E	His Employer	PG&E
His Phone	707/577-7062	His Phone	707/577-7062
His Fax	0	His FAX	0
His TELEX	0	His TELEX	0
Gross Mw	28	PP Operator	PG&E
Net Mw	27	GathSystCost	0 \$US Millions
TotWellProd	0 KLbs/hr.	Av Well Life	??? Years
TDS	0 PPM	H2S Sludge	0 Tons per Month
PP Lifetime	30 Years	Power Sales	0 KWH per Yea
Inlet Pres	0 psig	PowerSalesYr	????
InitResTemp	342 Degrees F	InitialTotNCG	0 Weight %
TotExplCost	0 \$US Millions	Initial CO2	???? Weight %
Av Well Cost	0 \$US Millions	Initial H2S	???? Weight %
Subsurf Area	0 Sq.Km	CurrentTotNCG	0 Weight %
Tot PP Cost	7 \$US Millions	CurrentCO2	???? Weight %
TotProjCost	0 \$US Millions	CurrentH2S	???? Weight %
Availability	0 %	NCGTrtmtSyst	N/A
Yr. of Avail	0		

PP Name	PG&E #5	PPCycleType	D STEAM
PP Site	CALIFORNIA	Inlet Temp	354 Degrees F
Status	0	Av Well Depth	0 Feet
OperDate	12/15/71	No. ProdWells	8
Nation	USA	No. Inj.Wells	1
SubDivision	GEYSERS	Fail_AbdWells	0
Res Owner	PG&E 90%	Total Wells	9
Res Devel	UNOCAL/MAGMA/THERMAL	R_C Sludge	0 Tons per Month
A and E	N/A	FinancOrganiz	N/A
PP Owner	PG&E	PwrSalePrice	????? \$US per KWH
Turb Source	TOSHIBA	PPCmpltnYear	1971
PwrPurchaser	PG&E	PPShutDownYr	0
PPContractor	PG&E	GenrtrSource	TOSHIBA
PPOwnrCntact	GLEN HORTON	ResOwnrCntact	GLEN HORTON
His Employer	PG&E	His Employer	PG&E
His Phone	707/577-7062	His Phone	707/577-7062
His Fax	0	His FAX	0
His TELEX	0	His TELEX	0
Gross Mw	55	PP Operator	PG&E
Net Mw	53	GathSystCost	0 \$US Millions
TotWellProd	0 KLbs/hr.	Av Well Life	??? Years
TDS	0 PPM	H2S Sludge	0 Tons per Month
PP Lifetime	30 Years	Power Sales	0 KWH per Yea
Inlet Pres	0 psig	PowerSalesYr	????
InitResTemp	354 Degrees F	InitialTotNCG	0 Weight %
TotExplCost	0 \$US Millions	Initial CO2	???? Weight %
Av Well Cost	0 \$US Millions	Initial H2S	???? Weight %
Subsurf Area	0 Sq.Km	CurrentTotNCG	0 Weight %
Tot PP Cost	6 \$US Millions	CurrentCO2	???? Weight %
TotProjCost	0 \$US Millions	CurrentH2S	???? Weight %
Availability	0 %	NCGTrtmtSyst	N/A
Yr. of Avail	0		

PP Name	PG&E #6	PPCycleType	D STEAM
PP Site	CALIFORNIA	Inlet Temp	354 Degrees F
Status	0	Av Well Depth	0 Feet
OperDate	12/15/71	No. ProdWells	8
Nation	USA	No. Inj.Wells	1
SubDivision	GEYSERS	Fail AbdWells	0
Res Owner	PG&E 90%	Total Wells	9
Res Devel	UNOCAL/MAGMA/THERMAL	R C Sludge	0 Tons per Month
A and E	N/A	FinancOrganiz	N/A
PP Owner	PG&E	PwrSalePrice	????? \$US per KWH
Turb Source	TOSHIBA	PPCmpltnYear	1971
PwrPurchaser	PG&E	PPShutDownYr	0
PPContractor	PG&E	GenrtrSource	TOSHIBA
PPOwnrCntact	GLEN HORTON	ResOwnrCntact	GLEN HORTON
His Employer	PG&E	His Employer	PG&E
His Phone	707/577-7062	His Phone	707/577-7062
His Fax	0	His FAX	0
His TELEX	0	His TELEX	0
Gross Mw	55	PP Operator	PG&E
Net Mw	53	GathSystCost	0 \$US Millions
TotWellProd	0 KLbs/hr.	Av Well Life	??? Years
TDS	0 PPM	H2S Sludge	0 Tons per Month
PP Lifetime	30 Years	Power Sales	0 KWH per Yea
Inlet Pres	0 psig	PowerSalesYr	????
InitResTemp	354 Degrees F	InitialTotNCG	0 Weight %
TotExplCost	0 \$US Millions	Initial CO2	???? Weight %
Av Well Cost	0 \$US Millions	Initial H2S	???? Weight %
Subsurf Area	0 Sq.Km	CurrentTotNCG	0 Weight %
Tot PP Cost	12 \$US Millions	CurrentCO2	???? Weight %
TotProjCost	0 \$US Millions	CurrentH2S	???? Weight %
Availability	0 %	NCGTrtmtSyst	N/A
Yr. of Avail	0		

PP Name	PG&E #7	PPCycleType	D STEAM
PP Site	CALIFORNIA	Inlet Temp	354 Degrees F
Status	0	Av Well Depth	0 Feet
OperDate	08/18/72	No. ProdWells	9
Nation	USA	No. Inj.Wells	1
SubDivision	GEYSERS	Fail AbdWells	0
Res Owner	PG&E 65%	Total Wells	10
Res Devel	UNOCAL/MAGMA/THERMAL	R_C Sludge	0 Tons per Month
A and E	N/A	FinancOrganiz	N/A
PP Owner	PG&E	PwrSalePrice	????? \$US per KWH
Turb Source	TOSHIBA	PPCmpltnYear	1972
PwrPurchaser	PG&E	PPShutDownYr	0
PPContractor	PG&E	GenrtrSource	TOSHIBA
PPOwnrCntact	GLEN HORTON	ResOwnrCntact	GLEN HORTON
His Employer	PG&E	His Employer	PG&E
His Phone	707/577-7062	His Phone	707/577-7062
His Fax	0	His FAX	0
His TELEX	0	His TELEX	0
Gross Mw	55	PP Operator	PG&E
Net Mw	53	GathSystCost	0 \$US Millions
TotWellProd	0 KLbs/hr.	Av Well Life	??? Years
TDS	0 PPM	H2S Sludge	0 Tons per Month
PP Lifetime	30 Years	Power Sales	0 KWH per Yea
Inlet Pres	0 psig	PowerSalesYr	????
InitResTemp	354 Degrees F	InitialTotNCG	0 Weight %
TotExplCost	0 \$US Millions	Initial CO2	???? Weight %
Av Well Cost	0 \$US Millions	Initial H2S	???? Weight %
Subsurf Area	0 Sq.Km	CurrentTotNCG	0 Weight %
Tot PP Cost	6 \$US Millions	CurrentCO2	???? Weight %
TotProjCost	0 \$US Millions	CurrentH2S	???? Weight %
Availability	0 %	NCGTrtmtSyst	N/A
Yr. of Avail	0		

PP Name	PG&E #8	PPCycleType	D STEAM
PP Site	CALIFORNIA	Inlet Temp	354 Degrees F
Status	0	Av Well Depth	0 Feet
OperDate	11/23/72	No. ProdWells	9
Nation	USA	No. Inj.Wells	1
SubDivision	GEYSERS	Fail_AbdWells	0
Res Owner	PG&E 65%	Total Wells	10
Res Devel	UNOCAL/MAGMA/THERMAL	R_C Sludge	0 Tons per Month
A and E	N/A	FinancOrganiz	0
PP Owner	PG&E	PwrSalePrice	????? \$US per KWH
Turb Source	TOSHIBA	PPCmpltnYear	1972
PwrPurchaser	PG&E	PPShutDownYr	0
PPContractor	PG&E	GenrtrSource	TOSHIBA
PPOwnrCntact	GLEN HORTON	ResOwnrCntact	GLEN HORTON
His Employer	PG&E	His Employer	PG&E
His Phone	707/577-7062	His Phone	707/577-7062
His Fax	0	His FAX	0
His TELEX	0	His TELEX	0
Gross Mw	55	PP Operator	PG&E
Net Mw	53	GathSystCost	0 \$US Millions
TotWellProd	0 KLbs/hr.	Av Well Life	??? Years
TDS	0 PPM	H2S Sludge	0 Tons per Month
PP Lifetime	30 Years	Power Sales	0 KWH per Yea
Inlet Pres	0 psig	PowerSalesYr	????
InitResTemp	354 Degrees F	InitialTotNCG	0 Weight %
TotExplCost	0 \$US Millions	Initial CO2	???? Weight %
Av Well Cost	0 \$US Millions	Initial H2S	???? Weight %
Subsurf Area	0 Sq.Km	CurrentTotNCG	0 Weight %
Tot PP Cost	12 \$US Millions	CurrentCO2	???? Weight %
TotProjCost	0 \$US Millions	CurrentH2S	???? Weight %
Availability	0 %	NCGTrtmtSyst	N/A
Yr. of Avail	0		

PP Name	PG&E #9	PPCycleType	D STEAM
PP Site	CALIFORNIA	Inlet Temp	354 Degrees F
Status	0	Av Well Depth	0 Feet
OperDate	10/15/73	No. ProdWells	9
Nation	USA	No. Inj.Wells	1
SubDivision	GEYSERS	Fail AbdWells	0
Res Owner	PG&E 95%	Total Wells	10
Res Devel	UNOCAL/MAGMA/THERMAL	R C Sludge	0 Tons per Month
A and E	N/A	FinancOrganiz	0
PP Owner	PG&E	PwrSalePrice	????? \$US per KWH
Turb Source	TOSHIBA	PPCmpltnYear	1973
PwrPurchaser	PG&E	PPShutDownYr	0
PPContractor	PG&E	GenrtrSource	TOSHIBA
PPOwnrCntact	GLEN HORTON	ResOwnrCntact	GLEN HORTON
His Employer	PG&E	His Employer	PG&E
His Phone	707/577-7062	His Phone	707/577-7062
His Fax	0	His FAX	0
His TELEX	0	His TELEX	0
Gross Mw	55	PP Operator	PG&E
Net Mw	53	GathSystCost	0 \$US Millions
TotWellProd	0 KLbs/hr.	Av Well Life	??? Years
TDS	0 PPM	H2S Sludge	0 Tons per Month
PP Lifetime	30 Years	Power Sales	0 KWH per Yea
Inlet Pres	0 psig	PowerSalesYr	????
InitResTemp	354 Degrees F	InitialTotNCG	0 Weight %
TotExplCost	0 \$US Millions	Initial CO2	???? Weight %
Av Well Cost	0 \$US Millions	Initial H2S	???? Weight %
Subsurf Area	0 Sq.Km	CurrentTotNCG	0 Weight %
Tot PP Cost	7 \$US Millions	CurrentCO2	???? Weight %
TotProjCost	0 \$US Millions	CurrentH2S	???? Weight %
Availability	0 %	NCGTrtmtSyst	N/A
Yr. of Avail	0		

PP Name	PG&E #10	PPCycleType	D STEAM
PP Site	CALIFORNIA	Inlet Temp	354 Degrees F
Status	0	Av Well Depth	0 Feet
OperDate	11/30/73	No. ProdWells	9
Nation	USA	No. Inj.Wells	1
SubDivision	GEYSERS	Fail_AbdWells	0
Res Owner	PG&E 95%	Total Wells	10
Res Devel	UNOCAL/MAGMA/THERMAL	R_C Sludge	0 Tons per Month
A and E	N/A	FinancOrganiz	0
PP Owner	PG&E	PwrSalePrice	????? \$US per KWH
Turb Source	TOSHIBA	PPCmpltnYear	1973
PwrPurchaser	PG&E	PPShutDownYr	0
PPContractor	PG&E	GenrtrSource	TOSHIBA
PPOwnrCntact	GLEN HORTON	ResOwnrCntact	GLEN HORTON
His Employer	PG&E	His Employer	PG&E
His Phone	707/577-7062	His Phone	707/577-7062
His Fax	0	His FAX	0
His TELEX	0	His TELEX	0
Gross Mw	55	PP Operator	PG&E
Net Mw	53	GathSystCost	0 \$US Millions
TotWellProd	0 KLbs/hr.	Av Well Life	??? Years
TDS	0 PPM	H2S Sludge	0 Tons per Month
PP Lifetime	30 Years	Power Sales	0 KWH per Yea
Inlet Pres	0 psig	PowerSalesYr	????
InitResTemp	354 Degrees F	InitialTotNCG	0 Weight %
TotExplCost	0 \$US Millions	Initial CO2	???? Weight %
Av Well Cost	0 \$US Millions	Initial H2S	???? Weight %
Subsurf Area	0 Sq.Km	CurrentTotNCG	0 Weight %
Tot PP Cost	13 \$US Millions	CurrentCO2	???? Weight %
TotProjCost	0 \$US Millions	CurrentH2S	???? Weight %
Availability	0 %	NCGTrtmtSyst	N/A
Yr. of Avail	0		

PP Name	PG&E #11	PPCycleType	D STEAM
PP Site	CALIFORNIA	Inlet Temp	354 Degrees F
Status	0	Av Well Depth	0 Feet
OperDate	05/31/75	No. ProdWells	17
Nation	USA	No. Inj.Wells	1
SubDivision	GEYSERS	Fail AbdWells	0
Res Owner	PG&E 95%	Total Wells	18
Res Devel	UNOCAL/MAGMA/THERMAL	R C Sludge	0 Tons per Month
A and E	N/A	FinancOrganiz	0
PP Owner	PG&E	PwrSalePrice	????? \$US per KWH
Turb Source	TOSHIBA	PPCmpltnYear	1973
PwrPurchaser	PG&E	PPShutDownYr	0
PPContractor	PG&E	GenrtrSource	TOSHIBA
PPOwnrCntact	GLEN HORTON	ResOwnrCntact	GLEN HORTON
His Employer	PG&E	His Employer	PG&E
His Phone	707/577-7062	His Phone	707/577-7062
His Fax	0	His FAX	0
His TELEX	0	His TELEX	0
Gross Mw	110	PP Operator	PG&E
Net Mw	106	GathSystCost	0 \$US Millions
TotWellProd	0 KLbs/hr.	Av Well Life	??? Years
TDS	0 PPM	H2S Sludge	0 Tons per Month
PP Lifetime	30 Years	Power Sales	0 KWH per Yea
Inlet Pres	0 psig	PowerSalesYr	????
InitResTemp	354 Degrees F	InitialTotNCG	0 Weight %
TotExplCost	0 \$US Millions	Initial CO2	???? Weight %
Av Well Cost	0 \$US Millions	Initial H2S	???? Weight %
Subsurf Area	0 Sq.Km	CurrentTotNCG	0 Weight %
Tot PP Cost	20 \$US Millions	CurrentCO2	???? Weight %
TotProjCost	0 \$US Millions	CurrentH2S	???? Weight %
Availability	0 %	NCGTrtmtSyst	N/A
Yr. of Avail	0		

PP Name	PG&E #12	PPCycleType	D STEAM
PP Site	CALIFORNIA	Inlet Temp	354 Degrees F
Status	0	Av Well Depth	0 Feet
OperDate	03/01/79	No. ProdWells	17
Nation	USA	No. Inj.Wells	1
SubDivision	GEYSERS	Fail AbdWells	0
Res Owner	PG&E 85%	Total Wells	18
Res Devel	UNOCAL/MAGMA/THERMAL	R C Sludge	0 Tons per Month
A and E	N/A	FinancOrganiz	0
PP Owner	PG&E	PwrSalePrice	????? \$US per KWH
Turb Source	TOSHIBA	PPCmpltnYear	1979
PwrPurchaser	PG&E	PPShutDownYr	0
PPContractor	PG&E	GenrtrSource	TOSHIBA
PPOwnrCntact	GLEN HORTON	ResOwnrCntact	GLEN HORTON
His Employer	PG&E	His Employer	PG&E
His Phone	707/577-7062	His Phone	707/577-7062
His Fax	0	His FAX	0
His TELEX	0	His TELEX	0
Gross Mw	110	PP Operator	PG&E
Net Mw	106	GathSystCost	0 \$US Millions
TotWellProd	0 KLbs/hr.	Av Well Life	??? Years
TDS	0 PPM	H2S Sludge	0 Tons per Month
PP Lifetime	30 Years	Power Sales	0 KWH per Yea
Inlet Pres	0 psig	PowerSalesYr	????
InitResTemp	354 Degrees F	InitialTotNCG	0 Weight %
TotExplCost	0 \$US Millions	Initial CO2	???? Weight %
Av Well Cost	0 \$US Millions	Initial H2S	???? Weight %
Subsurf Area	0 Sq.Km	CurrentTotNCG	0 Weight %
Tot PP Cost	35 \$US Millions	CurrentCO2	???? Weight %
TotProjCost	0 \$US Millions	CurrentH2S	???? Weight %
Availability	0 %	NCGTrtmtSyst	N/A
Yr. of Avail	0		

PP Name	PG&E #13	PPCycleType	D STEAM
PP Site	CALIFORNIA	Inlet Temp	338 Degrees F
Status	0	Av Well Depth	0 Feet
OperDate	05/15/80	No. ProdWells	20
Nation	USA	No. Inj.Wells	1
SubDivision	GEYSERS	Fail_AbdWells	0
Res Owner	PG&E 50%	Total Wells	21
Res Devel	UNOCAL/MAGMA/THERMAL	R_C Sludge	0 Tons per Month
A and E	N/A	FinancOrganiz	0
PP Owner	PG&E	PwrSalePrice	????? \$US per KWH
Turb Source	N/A	PPCmpltnYear	1980
PwrPurchaser	PG&E	PPShutDownYr	0
PPContractor	PG&E	GenrtrSource	N/A
PPOwnrCntact	GLEN HORTON	ResOwnrCntact	GLEN HORTON
His Employer	PG&E	His Employer	PG&E
His Phone	707/577-7062	His Phone	707/577-7062
His Fax	0	His FAX	0
His TELEX	0	His TELEX	0
Gross Mw	138	PP Operator	PG&E
Net Mw	134	GathSystCost	0 \$US Millions
TotWellProd	0 KLbs/hr.	Av Well Life	??? Years
TDS	0 PPM	H2S Sludge	0 Tons per Month
PP Lifetime	30 Years	Power Sales	0 KWH per Yea
Inlet Pres	0 psig	PowerSalesYr	????
InitResTemp	338 Degrees F	InitialTotNCG	0 Weight %
TotExplCost	0 \$US Millions	Initial CO2	???? Weight %
Av Well Cost	0 \$US Millions	Initial H2S	???? Weight %
Subsurf Area	0 Sq.Km	CurrentTotNCG	0 Weight %
Tot PP Cost	56 \$US Millions	CurrentCO2	???? Weight %
TotProjCost	0 \$US Millions	CurrentH2S	???? Weight %
Availability	0 %	NCGTrtmtSyst	N/A
Yr. of Avail	0		

PP Name	PG&E #14	PPCycleType	D STEAM
PP Site	CALIFORNIA	Inlet Temp	354 Degrees F
Status	0	Av Well Depth	0 Feet
OperDate	09/12/80	No. ProdWells	14
Nation	USA	No. Inj.Wells	1
SubDivision	GEYSERS	Fail_AbdWells	0
Res Owner	PG&E 90%	Total Wells	15
Res Devel	UNOCAL/MAGMA/THERMAL	R_C Sludge	0 Tons per Month
A and E	N/A	FinancOrganiz	0
PP Owner	PG&E	PwrSalePrice	????? \$US per KWH
Turb Source	TOSHIBA	PPCmpltnYear	1980
PwrPurchaser	PG&E	PPShutDownYr	0
PPContractor	PG&E	GenrtrSource	TOSHIBA
PPOwnrCntact	GLEN HORTON	ResOwnrCntact	GLEN HORTON
His Employer	PG&E	His Employer	PG&E
His Phone	707/577-7062	His Phone	707/577-7062
His Fax	0	His FAX	0
His TELEX	0	His TELEX	0
Gross Mw	0	PP Operator	PG&E
Net Mw	114	GathSystCost	0 \$US Millions
TotWellProd	0 KLbs/hr.	Av Well Life	??? Years
TDS	0 PPM	H2S Sludge	0 Tons per Month
PP Lifetime	30 Years	Power Sales	0 KWH per Yea
Inlet Pres	0 psig	PowerSalesYr	????
InitResTemp	354 Degrees F	InitialTotNCG	0 Weight %
TotExplCost	0 \$US Millions	Initial CO2	???? Weight %
Av Well Cost	0 \$US Millions	Initial H2S	???? Weight %
Subsurf Area	0 Sq.Km	CurrentTotNCG	0 Weight %
Tot PP Cost	65 \$US Millions	CurrentCO2	???? Weight %
TotProjCost	0 \$US Millions	CurrentH2S	???? Weight %
Availability	0 %	NCGTrtmtSyst	N/A
Yr. of Avail	0		

PP Name	PG&E # 15	PPCycleType	D STEAM
PP Site	CALIFORNIA	Inlet Temp	380 Degrees F
Status	N	Av Well Depth	0 Feet
OperDate	06/17/79	No. ProdWells	9
Nation	USA	No. Inj.Wells	1
SubDivision	WEST GEYSERS	Fail AbdWells	0
Res Owner	PG&E 95%	Total Wells	10
Res Devel	GEO OPERATOR CO	R_C Sludge	0 Tons per Month
A and E	N/A	FinancOrganiz	N/A
PP Owner	PG&E	PwrSalePrice	????? \$US per KWH
Turb Source	GENERAL ELECTRIC	PPCmpltnYear	1979
PwrPurchaser	PG&E	PPShutDownYr	1989
PPContractor	PG&E	GenrtrSource	GENERAL ELECTRIC
PPOwnrCntact	GLEN HORTON	ResOwnrCntact	N/A
His Employer	PG&E	His Employer	PG&E
His Phone	0	His Phone	0
His Fax	0	His FAX	0
His TELEX	0	His TELEX	0
Gross Mw	62	PP Operator	GEO OPERATOR CO
Net Mw	57	GathSystCost	0 \$US Millions
TotWellProd	0 KLbs/hr.	Av Well Life	??? Years
TDS	0 PPM	H2S Sludge	0 Tons per Month
PP Lifetime	11 Years	Power Sales	0 KWH per Yea
Inlet Pres	0 psig	PowerSalesYr	????
InitResTemp	380 Degrees F	InitialTotNCG	0 Weight %
TotExplCost	0 \$US Millions	Initial CO2	???? Weight %
Av Well Cost	0 \$US Millions	Initial H2S	???? Weight %
Subsurf Area	0 Sq.Km	CurrentTotNCG	0 Weight %
Tot PP Cost	37 \$US Millions	CurrentCO2	???? Weight %
TotProjCost	0 \$US Millions	CurrentH2S	???? Weight %
Availability	0 %	NCGTrtmtSyst	N/A
Yr. of Avail	0		

PP Name	PG&E #16	PPCycleType	D STEAM
PP Site	CALIFORNIA	Inlet Temp	336 Degrees F
Status	0	Av Well Depth	0 Feet
OperDate	10/16/85	No. ProdWells	14
Nation	USA	No. Inj.Wells	1
SubDivision	GEYSERS	Fail_AbdWells	0
Res Owner	PG&E 20%, FEDERAL 80%	Total Wells	15
Res Devel	FREEPOR T McMORAN	R C Sludge	0 Tons per Month
A and E	N/A	FinancOrganiz	0
PP Owner	PG&E	PwrSalePrice	????? \$US per KWH
Turb Source	TOSHIBA	PPCmpltnYear	1985
PwrPurchaser	PG&E	PPShutDownYr	0
PPContractor	PG&E	GenrtrSource	TOSHIBA
PPOwnrCntact	GLEN HORTON	ResOwnrCntact	GLEN HORTON
His Employer	PG&E	His Employer	PG&E
His Phone	707/577-7062	His Phone	707/577-7062
His Fax	0	His FAX	0
His TELEX	0	His TELEX	0
Gross Mw	119	PP Operator	PG&E
Net Mw	113	GathSystCost	0 \$US Millions
TotWellProd	0 KLbs/hr.	Av Well Life	??? Years
TDS	0 PPM	H2S Sludge	0 Tons per Month
PP Lifetime	30 Years	Power Sales	0 KWH per Yea
Inlet Pres	0 psig	PowerSalesYr	????
InitResTemp	336 Degrees F	InitialTotNCG	0 Weight %
TotExplCost	0 \$US Millions	Initial CO2	???? Weight %
Av Well Cost	0 \$US Millions	Initial H2S	???? Weight %
Subsurf Area	0 Sq.Km	CurrentTotNCG	0 Weight %
Tot PP Cost	123 \$US Millions	CurrentCO2	???? Weight %
TotProjCost	0 \$US Millions	CurrentH2S	???? Weight %
Availability	0 %	NCGTrtmtSyst	N/A
Yr. of Avail	0		

PP Name	PG&E #17	PPCycleType	D STEAM
PP Site	CALIFORNIA	Inlet Temp	338 Degrees F
Status	0	Av Well Depth	0 Feet
OperDate	12/18/82	No. ProdWells	14
Nation	USA	No. Inj.Wells	1
SubDivision	GEYSERS	Fail_AbdWells	0
Res Owner	PG&E 95%	Total Wells	15
Res Devel	UNOCAL/MAGMA/THERMAL	R C Sludge	0 Tons per Month
A and E	N/A	FinancOrganiz	\$71MM W/O AFDC, \$645/KW
PP Owner	PG&E	PwrSalePrice	????? \$US per KWH
Turb Source	TOSHIBA	PPCmpltnYear	1982
PwrPurchaser	PG&E	PPShutDownYr	0
PPContractor	PG&E	GenrtrSource	TOSHIBA
PPOwnrCntact	GLEN HORTON	ResOwnrCntact	GLEN HORTON
His Employer	PG&E	His Employer	PG&E
His Phone	707/577-7062	His Phone	707/577-7062
His Fax	0	His FAX	0
His TELEX	0	His TELEX	0
Gross Mw	119	PP Operator	PG&E
Net Mw	113	GathSystCost	0 \$US Millions
TotWellProd	0 KLbs/hr.	Av Well Life	??? Years
TDS	0 PPM	H2S Sludge	0 Tons per Month
PP Lifetime	30 Years	Power Sales	0 KWH per Yea
Inlet Pres	0 psig	PowerSalesYr	????
InitResTemp	338 Degrees F	InitialTotNCG	0 Weight %
TotExplCost	0 \$US Millions	Initial CO2	???? Weight %
Av Well Cost	0 \$US Millions	Initial H2S	???? Weight %
Subsurf Area	0 Sq.Km	CurrentTotNCG	0 Weight %
Tot PP Cost	93 \$US Millions	CurrentCO2	???? Weight %
TotProjCost	0 \$US Millions	CurrentH2S	???? Weight %
Availability	0 %	NCGTrtmtSyst	N/A
Yr. of Avail	0		

PP Name	PG&E #18	PPCycleType	D STEAM
PP Site	CALIFORNIA	Inlet Temp	338 Degrees F
Status	0	Av Well Depth	0 Feet
OperDate	02/15/83	No. ProdWells	14
Nation	USA	No. Inj.Wells	1
SubDivision	GEYSERS	Fail AbdWells	0
Res Owner	PG&E 95%	Total Wells	15
Res Devel	UNOCAL/MAGMA/THERMAL	R_C Sludge	0 Tons per Month
A and E	N/A	FinancOrganiz	N/A
PP Owner	PG&E	PwrSalePrice	????? \$US per KWH
Turb Source	TOSHIBA	PPCmpltnYear	1983
PwrPurchaser	PG&E	PPShutDownYr	0
PPContractor	PG&E	GenrtrSource	TOSHIBA
PPOwnrCntact	GLEN HORTON	ResOwnrCntact	GLEN HORTON
His Employer	PG&E	His Employer	PG&E
His Phone	707/577-7062	His Phone	707/577-7062
His Fax	0	His FAX	0
His TELEX	0	His TELEX	0
Gross Mw	119	PP Operator	PG&EW
Net Mw	113	GathSystCost	0 \$US Millions
TotWellProd	0 KLbs/hr.	Av Well Life	??? Years
TDS	0 PPM	H2S Sludge	0 Tons per Month
PP Lifetime	30 Years	Power Sales	0 KWH per Yea
Inlet Pres	0 psig	PowerSalesYr	?????
InitResTemp	338 Degrees F	InitialTotNCG	0 Weight %
TotExplCost	0 \$US Millions	Initial CO2	???? Weight %
Av Well Cost	0 \$US Millions	Initial H2S	???? Weight %
Subsurf Area	0 Sq.Km	CurrentTotNCG	0 Weight %
Tot PP Cost	83 \$US Millions	CurrentCO2	???? Weight %
TotProjCost	0 \$US Millions	CurrentH2S	???? Weight %
Availability	0 %	NCGTrtmtSyst	N/A
Yr. of Avail	0		

PP Name	PG&E #20	PPCycleType	D STEAM
PP Site	CALIFORNIA	Inlet Temp	336 Degrees F
Status	0	Av Well Depth	0 Feet
OperDate	10/18/85	No. ProdWells	14
Nation	USA	No. Inj.Wells	1
SubDivision	GEYSERS	Fail_AbdWells	0
Res Owner	PG&E 50%, FED. 50%	Total Wells	15
Res Devel	UNOCAL/THERMAL	R_C Sludge	0 Tons per Month
A and E	N/A	FinancOrganiz	0
PP Owner	PG&E	PwrSalePrice	????? \$US per KWH
Turb Source	TOSHIBA	PPCmpltnYear	1985
PwrPurchaser	PG&E	PPShutDownYr	0
PPContractor	PG&E	GenrtrSource	TOSHIBA
PPOwnrCntact	GLEN HORTON	ResOwnrCntact	GLEN HORTON
His Employer	PG&E	His Employer	PG&E
His Phone	707/577-7062	His Phone	707/577-7062
His Fax	0	His FAX	0
His TELEX	0	His TELEX	0
Gross Mw	119	PP Operator	PG&E
Net Mw	113	GathSystCost	0 \$US Millions
TotWellProd	0 KLbs/hr.	Av Well Life	??? Years
TDS	0 PPM	H2S Sludge	0 Tons per Month
PP Lifetime	30 Years	Power Sales	0 KWH per Yea
Inlet Pres	0 psig	PowerSalesYr	????
InitResTemp	336 Degrees F	InitialTotNCG	0 Weight %
TotExplCost	0 \$US Millions	Initial CO2	???? Weight %
Av Well Cost	0 \$US Millions	Initial H2S	???? Weight %
Subsurf Area	0 Sq.Km	CurrentTotNCG	0 Weight %
Tot PP Cost	103 \$US Millions	CurrentCO2	???? Weight %
TotProjCost	216 \$US Millions	CurrentH2S	???? Weight %
Availability	0 %	NCGTrtmtSyst	N/A
Yr. of Avail	0		

PP Name	COLD WATER CREEK	PPCycleType	D STEAM
PP Site	CALIFORNIA	Inlet Temp	380 Degrees F
Status	0	Av Well Depth	8000 Feet
OperDate	06/01/88	No. ProdWells	15
Nation	USA	No. Inj.Wells	2
SubDivision	NORTH GEYSERS	Fail AbdWells	0
Res Owner	PRIVATE	Total Wells	17
Res Devel	GEO OPERATOR CO	R_C Sludge	0 Tons per Month
A and E	STONE & WEBSTER	FinancOrganiz	MORGAN GUARANTEE ET AL
PP Owner	CENTRL CA PWR AGENCY	PwrSalePrice	????? \$US per KWH
Turb Source	TOSHIBA	PPCmpltnYear	1988
PwrPurchaser	CCPA	PPShutDownYr	0
PPContractor	CCPA	GenrtrSource	TOSHIBA
PPOwnrCntact	STEPHEN PONDER	ResOwnrCntact	N/A
His Employer	GEO OPERATOR CO	His Employer	N/A
His Phone	707/523-4272	His Phone	0
His Fax	0	His FAX	0
His TELEX	0	His TELEX	0
Gross Mw	132	PP Operator	GEO OPERATOR CO
Net Mw	120	GathSystCost	0 \$US Millions
TotWellProd	880000 KLbs/hr.	Av Well Life	??? Years
TDS	0 PPM	H2S Sludge	0 Tons per Month
PP Lifetime	30 Years	Power Sales	0 KWH per Yea
Inlet Pres	60 psig	PowerSalesYr	????
InitResTemp	380 Degrees F	InitialTotNCG	0 Weight %
TotExplCost	0 \$US Millions	Initial CO2	???? Weight %
Av Well Cost	0 \$US Millions	Initial H2S	???? Weight %
Subsurf Area	0 Sq.Km	CurrentTotNCG	0 Weight %
Tot PP Cost	105 \$US Millions	CurrentCO2	???? Weight %
TotProjCost	218 \$US Millions	CurrentH2S	???? Weight %
Availability	0 %	NCGTrtmtSyst	N/A
Yr. of Avail	0		

PP Name	SMUDGE 1	PPCycleType	D STEAM
PP Site	CALIFORNIA	Inlet Temp	460 Degrees F
Status	0	Av Well Depth	0 Feet
OperDate	12/01/83	No. ProdWells	0
Nation	USA	No. Inj.Wells	0
SubDivision	GEYSERS	Fail AbdWells	0
Res Owner	FEDERAL	Total Wells	0
Res Devel	CALPINE	R C Sludge	0 Tons per Month
A and E	STONE & WEBSTER	FinancOrganiz	N/A
PP Owner	SAC.MUN.WATER DIST.	PwrSalePrice	????? \$US per KWH
Turb Source	MITSUBISHI	PPCmpltnYear	1983
PwrPurchaser	SMUD	PPShutDownYr	0
PPContractor	SMUD	GenrtrSource	MITSUBISHI
PPOwnrCntact	JAKE RUDISILL	ResOwnrCntact	N/A
His Employer	CALPINE	His Employer	BUR LAND MGMT/USFS
His Phone	707/578-2702	His Phone	0
His Fax	0	His FAX	0
His TELEX	0	His TELEX	0
Gross Mw	78	PP Operator	SMUD
Net Mw	72	GathSystCost	0 \$US Millions
TotWellProd	0 KLbs/hr.	Av Well Life	??? Years
TDS	0 PPM	H2S Sludge	0 Tons per Month
PP Lifetime	30 Years	Power Sales	0 KWH per Yea
Inlet Pres	0 psig	PowerSalesYr	????
InitResTemp	460 Degrees F	InitialTotNCG	0 Weight %
TotExplCost	0 \$US Millions	Initial CO2	???? Weight %
Av Well Cost	0 \$US Millions	Initial H2S	???? Weight %
Subsurf Area	0 Sq.Km	CurrentTotNCG	0 Weight %
Tot PP Cost	92 \$US Millions	CurrentCO2	???? Weight %
TotProjCost	0 \$US Millions	CurrentH2S	???? Weight %
Availability	98 %	NCGTrtmtSyst	N/A
Yr. of Avail	0		

PP Name	NCPA 1 (OLD #2)	PPCycleType	D STEAM
PP Site	CALIFORNIA	Inlet Temp	390 Degrees F
Status	0	Av Well Depth	0 Feet
OperDate	02/23/83	No. ProdWells	0
Nation	USA	No. Inj.Wells	0
SubDivision	SOUTHERN GEYSERS	Fail AbdWells	0
Res Owner	FEDERAL	Total Wells	0
Res Devel	GRACE GEOTHERMAL	R_C Sludge	0 Tons per Month
A and E	GIBBS AND HILL	FinancOrganiz	N/A
PP Owner	NORTH. CAL PWR AGNCY	PwrSalePrice	????? \$US per KWH
Turb Source	FUJI	PPCmpltnYear	1983
PwrPurchaser	NCPA	PPShutDownYr	0
PPContractor	NCPA	GenrtrSource	FUJI
PPOwnrCntact	RICHARD YARTER	ResOwnrCntact	N/A
His Employer	NCPA	His Employer	U.S. BLM
His Phone	916/781-3636	His Phone	0
His Fax	0	His FAX	0
His TELEX	0	His TELEX	0
Gross Mw	0	PP Operator	NCPA
Net Mw	106	GathSystCost	0 \$US Millions
TotWellProd	0 KLbs/hr.	Av Well Life	??? Years
TDS	0 PPM	H2S Sludge	0 Tons per Month
PP Lifetime	30 Years	Power Sales	0 KWH per Yea
Inlet Pres	0 psig	PowerSalesYr	????
InitResTemp	390 Degrees F	InitialTotNCG	0 Weight %
TotExplCost	125 \$US Millions	Initial CO2	???? Weight %
Av Well Cost	0 \$US Millions	Initial H2S	???? Weight %
Subsurf Area	0 Sq.Km	CurrentTotNCG	0 Weight %
Tot PP Cost	100 \$US Millions	CurrentCO2	???? Weight %
TotProjCost	225 \$US Millions	CurrentH2S	???? Weight %
Availability	0 %	NCGTrtmtSyst	N/A
Yr. of Avail	0		

PP Name	NCPA #2 (OLD #3)	PPCycleType	D STEAM
PP Site	CALIFORNIA	Inlet Temp	390 Degrees F
Status	0	Av Well Depth	0 Feet
OperDate	06/01/86	No. ProdWells	0
Nation	USA	No. Inj.Wells	0
SubDivision	SOUTHERN GEYSERS	Fail_AbdWells	0
Res Owner	FEDERAL	Total Wells	0
Res Devel	GRACE GEOTHERMAL	R C Sludge	0 Tons per Month
A and E	N/A	FinancOrganiz	TAX EXEMPT
PP Owner	NORTH CA PWR AGENCY	PwrSalePrice	????? \$US per KWH
Turb Source	FUJI	PPCmpltnYear	1986
PwrPurchaser	NCPA	PPShutDownYr	0
PPContractor	NCPA	GenrtrSource	FUJI
PPOwnrCntact	RICHARD YARTER	ResOwnrCntact	N/A
His Employer	NCPA	His Employer	U.S. BLM
His Phone	916/781-3636	His Phone	0
His Fax	0	His FAX	0
His TELEX	0	His TELEX	0
Gross Mw	0	PP Operator	NCPA
Net Mw	106	GathSystCost	0 \$US Millions
TotWellProd	0 KLbs/hr.	Av Well Life	??? Years
TDS	0 PPM	H2S Sludge	0 Tons per Month
PP Lifetime	30 Years	Power Sales	0 KWH per Yea
Inlet Pres	0 psig	PowerSalesYr	????
InitResTemp	390 Degrees F	InitialTotNCG	0 Weight %
TotExplCost	50 \$US Millions	Initial CO2	???? Weight %
Av Well Cost	0 \$US Millions	Initial H2S	???? Weight %
Subsurf Area	0 Sq.Km	CurrentTotNCG	0 Weight %
Tot PP Cost	120 \$US Millions	CurrentCO2	???? Weight %
TotProjCost	170 \$US Millions	CurrentH2S	???? Weight %
Availability	0 %	NCGTrtmtSyst	N/A
Yr. of Avail	0		

PP Name	AIDLIN PROJECT	PPCycleType	D STEAM
PP Site	CALIFORNIA	Inlet Temp	352 Degrees F
Status	0	Av Well Depth	0 Feet
OperDate	12/01/89	No. ProdWells	5
Nation	USA	No. Inj.Wells	0
SubDivision	NORTHERN GEYSERS	Fail AbdWells	0
Res Owner	JOE AIDLIN & FAMILY	Total Wells	5
Res Devel	GEO	R_C Sludge	0 Tons per Month
A and E	MISSION POWER ENG.	FinancOrganiz	SWISS BANK CORP.
PP Owner	MISSION POWER ENG	PwrSalePrice	????? \$US per KWH
Turb Source	FUJI	PPCmpltnYear	1989
PwrPurchaser	PG&E	PPShutDownYr	0
PPContractor	GEO/MISSION	GenrtrSource	FUJI
PPOwnrCntact	JACK ADRIAN	ResOwnrCntact	JOE AIDLEN
His Employer	MISSION POWER	His Employer	SELF
His Phone	818/302-6292	His Phone	213/666-1910
His Fax	0	His FAX	0
His TELEX	0	His TELEX	0
Gross Mw	0	PP Operator	MISSION
Net Mw	20	GathSystCost	0 \$US Millions
TotWellProd	0 KLbs/hr.	Av Well Life	??? Years
TDS	0 PPM	H2S Sludge	0 Tons per Month
PP Lifetime	30 Years	Power Sales	0 KWH per Yea
Inlet Pres	0 psig	PowerSalesYr	????
InitResTemp	352 Degrees F	InitialTotNCG	0 Weight %
TotExplCost	0 \$US Millions	Initial CO2	???? Weight %
Av Well Cost	0 \$US Millions	Initial H2S	???? Weight %
Subsurf Area	2 Sq.Km	CurrentTotNCG	0 Weight %
Tot PP Cost	0 \$US Millions	CurrentCO2	???? Weight %
TotProjCost	69 \$US Millions	CurrentH2S	???? Weight %
Availability	0 %	NCGTrtmtSyst	N/A
Yr. of Avail	0		

PP Name	SANTA FE #1 (OXY #1)	PPCycleType	D STEAM
PP Site	CALIFORNIA	Inlet Temp	338 Degrees F
Status	0	Av Well Depth	0 Feet
OperDate	03/31/84	No. ProdWells	0
Nation	USA	No. Inj.Wells	0
SubDivision	CENTRAL GEYSERS	Fail AbdWells	0
Res Owner	FEDERAL	Total Wells	0
Res Devel	SANTA FE GEOTHERMAL	R C Sludge	0 Tons per Month
A and E	STONE & WEBSTER	FinancOrganiz	0
PP Owner	SANTA FE GEOTHERMAL	PwrSalePrice	????? \$US per KWH
Turb Source	TOSHIBA	PPCmpltnYear	1984
PwrPurchaser	PG&E	PPShutDownYr	0
PPContractor	SANTA FE GEOTHERMAL	GenrtrSource	TOSHIBA
PPOwnrCntact	JOHN PETERS	ResOwnrCntact	N/A
His Employer	SANTA FE GEOTHERMAL	His Employer	U.S. BLM
His Phone	214/701-7300	His Phone	0
His Fax	0	His FAX	0
His TELEX	0	His TELEX	0
Gross Mw	97	PP Operator	SANTA FE GEOTHERMAL
Net Mw	80	GathSystCost	0 \$US Millions
TotWellProd	0 KLbs/hr.	Av Well Life	??? Years
TDS	0 PPM	H2S Sludge	0 Tons per Month
PP Lifetime	30 Years	Power Sales	0 KWH per Yea
Inlet Pres	0 psig	PowerSalesYr	????
InitResTemp	338 Degrees F	InitialTotNCG	0 Weight %
TotExplCost	0 \$US Millions	Initial CO2	???? Weight %
Av Well Cost	0 \$US Millions	Initial H2S	???? Weight %
Subsurf Area	0 Sq.Km	CurrentTotNCG	0 Weight %
Tot PP Cost	0 \$US Millions	CurrentCO2	???? Weight %
TotProjCost	0 \$US Millions	CurrentH2S	???? Weight %
Availability	99 %	NCGTrtmtSyst	N/A
Yr. of Avail	0		

PP Name	BEAR CANYON	PPCycleType	D STEAM
PP Site	CALIFORNIA	Inlet Temp	352 Degrees F
Status	0	Av Well Depth	0 Feet
OperDate	12/01/89	No. ProdWells	5
Nation	USA	No. Inj.Wells	0
SubDivision	EASTERN GEYSERS	Fail AbdWells	0
Res Owner	PRIVATE	Total Wells	5
Res Devel	FREEPORT MCMORAN	R C Sludge	0 Tons per Month
A and E	STONE & WEBSTER	FinancOrganiz	0
PP Owner	FREEPORT MCMORAN	PwrSalePrice	????? \$US per KWH
Turb Source	MITSUBISHI	PPCmpltnYear	1989
PwrPurchaser	PG&E	PPShutDownYr	0
PPContractor	N/A	GenrtrSource	MITSUBISHI
PPOwnrCntact	JAKE RUIDISILL	ResOwnrCntact	N/A
His Employer	GEYSERS GEOTHERMAL	His Employer	U.S. BLM/U.S.F.S.
His Phone	707/578-2702	His Phone	0
His Fax	0	His FAX	0
His TELEX	0	His TELEX	0
Gross Mw	22	PP Operator	GEYSERS GEOTHERMAL
Net Mw	20	GathSystCost	0 \$US Millions
TotWellProd	0 KLbs/hr.	Av Well Life	??? Years
TDS	0 PPM	H2S Sludge	0 Tons per Month
PP Lifetime	30 Years	Power Sales	0 KWH per Yea
Inlet Pres	0 psig	PowerSalesYr	????
InitResTemp	352 Degrees F	InitialTotNCG	0 Weight %
TotExplCost	0 \$US Millions	Initial CO2	???? Weight %
Av Well Cost	0 \$US Millions	Initial H2S	???? Weight %
Subsurf Area	0 Sq.Km	CurrentTotNCG	0 Weight %
Tot PP Cost	0 \$US Millions	CurrentCO2	???? Weight %
TotProjCost	0 \$US Millions	CurrentH2S	???? Weight %
Availability	0 %	NCGTrtmtSyst	N/A
Yr. of Avail	0		

PP Name	WEST FORD FLAT	PPCycleType	D STEAM
PP Site	CALIFORNIA	Inlet Temp	352 Degrees F
Status	0	Av Well Depth	0 Feet
OperDate	12/31/88	No. ProdWells	6
Nation	USA	No. Inj.Wells	1
SubDivision	EAST-CENTRAL GEYSERS	Fail AbdWells	0
Res Owner	FEDERAL/PRIVATE	Total Wells	7
Res Devel	GEYSERS GEOTHERMAL	R C Sludge	0 Tons per Month
A and E	SAI	FinancOrganiz	0
PP Owner	GEYSERS GEOTHERMAL	PwrSalePrice	????? \$US per KWH
Turb Source	MITSUBISHI	PPCmpltnYear	1988
PwrPurchaser	PG&E	PPShutDownYr	0
PPContractor	N/A	GenrtrSource	MITSUBISHI
PPOwnrCntact	JAKE RUDISILL	ResOwnrCntact	N/A
His Employer	GEYSERS GEOTHERMAL	His Employer	U.S. BLM/U.S.F.S.
His Phone	707/578-2702	His Phone	0
His Fax	0	His FAX	0
His TELEX	0	His TELEX	0
Gross Mw	34	PP Operator	GEYSERS GEOTHERMAL
Net Mw	27	GathSystCost	0 \$US Millions
TotWellProd	0 KLbs/hr.	Av Well Life	??? Years
TDS	0 PPM	H2S Sludge	0 Tons per Month
PP Lifetime	30 Years	Power Sales	0 KWH per Yea
Inlet Pres	0 psig	PowerSalesYr	????
InitResTemp	352 Degrees F	InitialTotNCG	0 Weight %
TotExplCost	0 \$US Millions	Initial CO2	???? Weight %
Av Well Cost	0 \$US Millions	Initial H2S	???? Weight %
Subsurf Area	0 Sq.Km	CurrentTotNCG	0 Weight %
Tot PP Cost	0 \$US Millions	CurrentCO2	???? Weight %
TotProjCost	0 \$US Millions	CurrentH2S	???? Weight %
Availability	0 %	NCGTrtmtSyst	N/A
Yr. of Avail	0		

PP Name	MAMMOTH PACIFIC 1	PPCycleType	BINARY
PP Site	CALIFORNIA	Inlet Temp	330 Degrees F
Status	0	Av Well Depth	650 Feet
OperDate	03/01/84	No. ProdWells	4
Nation	USA	No. Inj.Wells	3
SubDivision	LONG VALLEY-MONO	Fail_AbdWells	0
Res Owner	MAGMA POWER	Total Wells	7
Res Devel	PACIFIC ENERGY	R_C Sludge	0 Tons per Month
A and E	BEN HOLT CO	FinancOrganiz	HOLT/PACIFIC LIGHTING
PP Owner	PACIFIC ENERGY	PwrSalePrice	????? \$US per KWH
Turb Source	BEN HOLT CO	PPCmpltnYear	1984
PwrPurchaser	SO. CAL. EDISON	PPShutDownYr	0
PPContractor	BEN HOLT CO	GenrtrSource	THE BEN HOLT CO
PPOwnrCntact	MICHAEL WALKER	ResOwnrCntact	N/A
His Employer	PACIFIC ENERGY	His Employer	MAGMA POWER
His Phone	213/725-1139	His Phone	0
His Fax	0	His FAX	0
His TELEX	0	His TELEX	0
Gross Mw	10	PP Operator	PCIFIC ENERGY
Net Mw	7	GathSystCost	0 \$US Millions
TotWellProd	0 KLbs/hr.	Av Well Life	??? Years
TDS	0 PPM	H2S Sludge	0 Tons per Month
PP Lifetime	30 Years	Power Sales	0 KWH per Yea
Inlet Pres	0 psig	PowerSalesYr	????
InitResTemp	330 Degrees F	InitialTotNCG	0 Weight %
TotExplCost	3 \$US Millions	Initial CO2	???? Weight %
Av Well Cost	0 \$US Millions	Initial H2S	???? Weight %
Subsurf Area	0 Sq.Km	CurrentTotNCG	0 Weight %
Tot PP Cost	10 \$US Millions	CurrentCO2	???? Weight %
TotProjCost	13 \$US Millions	CurrentH2S	???? Weight %
Availability	0 %	NCGTrtmtSyst	N/A
Yr. of Avail	0		

PP Name	PLES UNIT 1	PPCycleType	BINARY
PP Site	CALIFORNIA	Inlet Temp	331 Degrees F
Status	0	Av Well Depth	0 Feet
OperDate	01/01/90	No. ProdWells	0
Nation	USA	No. Inj.Wells	0
SubDivision	LONG VAL CASA DIABLO	Fail AbdWells	0
Res Owner	N/A	Total Wells	0
Res Devel	PACIFIC ENERGY	R_C Sludge	0 Tons per Month
A and E	N/A	FinancOrganiz	0
PP Owner	PACIFIC ENERGY	PwrSalePrice	????? \$US per KWH
Turb Source	N/A	PPCmpltnYear	1990
PwrPurchaser	SO. CAL. EDISON	PPShutDownYr	0
PPContractor	N/A	GenrtrSource	N/A
PPOwnrCntact	MIKE WALKER	ResOwnrCntact	N/A
His Employer	PACIFIC ENERGY	His Employer	N/A
His Phone	619/934-4893	His Phone	0
His Fax	0	His FAX	0
His TELEX	0	His TELEX	0
Gross Mw	11	PP Operator	PACIFIC ENERGY
Net Mw	10	GathSystCost	0 \$US Millions
TotWellProd	0 KLbs/hr.	Av Well Life	??? Years
TDS	0 PPM	H2S Sludge	0 Tons per Month
PP Lifetime	30 Years	Power Sales	0 KWH per Yea
Inlet Pres	0 psig	PowerSalesYr	????
InitResTemp	331 Degrees F	InitialTotNCG	0 Weight %
TotExplCost	0 \$US Millions	Initial CO2	???? Weight %
Av Well Cost	0 \$US Millions	Initial H2S	???? Weight %
Subsurf Area	0 Sq.Km	CurrentTotNCG	0 Weight %
Tot PP Cost	0 \$US Millions	CurrentCO2	???? Weight %
TotProjCost	0 \$US Millions	CurrentH2S	???? Weight %
Availability	0 %	NCGTrtmtSyst	N/A
Yr. of Avail	0		

PP Name	MAMMOTH PACIFIC 2	PPCycleType	BINARY
PP Site	CALIFORNIA	Inlet Temp	330 Degrees F
Status	0	Av Well Depth	0 Feet
OperDate	12/31/90	No. ProdWells	0
Nation	USA	No. Inj.Wells	0
SubDivision	L.VALLEY,CASA DIABLO	Fail_AbdWells	0
Res Owner	MAGMA	Total Wells	0
Res Devel	PACIFIC ENERGY	R_C Sludge	0 Tons per Month
A and E	THE BEN HOLT CO.	FinancOrganiz	0
PP Owner	PACIFIC ENERGY	PwrSalePrice	????? \$US per KWH
Turb Source	N/A	PPCmpltnYear	1990
PwrPurchaser	SO. CAL EDISON	PPShutDownYr	0
PPContractor	N/A	GenrtrSource	0
PPOwnrCntact	MIKE WLKER	ResOwnrCntact	ARNOLD JOHNSON
His Employer	PACIFIC ENERGY	His Employer	MAGMA
His Phone	619/934-4893	His Phone	619/487-9412
His Fax	0	His FAX	0
His TELEX	0	His TELEX	0
Gross Mw	12	PP Operator	PACIFIC ENERGY
Net Mw	10	GathSystCost	0 \$US Millions
TotWellProd	0 KLbs/hr.	Av Well Life	??? Years
TDS	0 PPM	H2S Sludge	0 Tons per Month
PP Lifetime	30 Years	Power Sales	0 KWH per Yea
Inlet Pres	0 psig	PowerSalesYr	????
InitResTemp	330 Degrees F	InitialTotNCG	0 Weight %
TotExplCost	0 \$US Millions	Initial CO2	???? Weight %
Av Well Cost	0 \$US Millions	Initial H2S	???? Weight %
Subsurf Area	0 Sq.Km	CurrentTotNCG	0 Weight %
Tot PP Cost	0 \$US Millions	CurrentCO2	???? Weight %
TotProjCost	0 \$US Millions	CurrentH2S	???? Weight %
Availability	0 %	NCGTrtmtSyst	N/A
Yr. of Avail	0		

PP Name	WINEAGLE	PPCycleType	BINARY
PP Site	CALIFORNIA	Inlet Temp	217 Degrees F
Status	0	Av Well Depth	0 Feet
OperDate	12/31/85	No. ProdWells	1
Nation	USA	No. Inj.Wells	1
SubDivision	WENDEL-AMIDEE AREA	Fail AbdWells	0
Res Owner	PRIVATE	Total Wells	2
Res Devel	WINEAGLE DEVELOPERS	R_C Sludge	0 Tons per Month
A and E	BARBER NICHOLS ENG.	FinancOrganiz	0
PP Owner	WINEAGLE DEVELOPERS	PwrSalePrice	????? \$US per KWH
Turb Source	BARBER NICHOLS ENG.	PPCmpltnYear	1985
PwrPurchaser	PG & E	PPShutDownYr	0
PPContractor	WINEAGLE	GenrtrSource	BARBER NICHOLS ENG.
PPOwnrCntact	KEN NICHOLS	ResOwnrCntact	N/A
His Employer	BARBER NICHOLS ENG.	His Employer	0
His Phone	303/421-8111	His Phone	0
His Fax	303/420-4679	His FAX	0
His TELEX	0	His TELEX	0
Gross Mw	2	PP Operator	BARBER NICHOLS ENG.
Net Mw	1	GathSystCost	0 \$US Millions
TotWellProd	0 KLbs/hr.	Av Well Life	??? Years
TDS	0 PPM	H2S Sludge	0 Tons per Month
PP Lifetime	30 Years	Power Sales	0 KWH per Yea
Inlet Pres	0 psig	PowerSalesYr	????
InitResTemp	217 Degrees F	InitialTotNCG	0 Weight %
TotExplCost	0 \$US Millions	Initial CO2	???? Weight %
Av Well Cost	0 \$US Millions	Initial H2S	???? Weight %
Subsurf Area	0 Sq.Km	CurrentTotNCG	0 Weight %
Tot PP Cost	0 \$US Millions	CurrentCO2	???? Weight %
TotProjCost	0 \$US Millions	CurrentH2S	???? Weight %
Availability	0 %	NCGTrtmtSyst	NONE
Yr. of Avail	0		

PP Name	WENDEL-AMEDEE UNIT	PPCycleType	BINARY
PP Site	CALIFORNIA	Inlet Temp	219 Degrees F
Status	0	Av Well Depth	850 Feet
OperDate	01/01/88	No. ProdWells	2
Nation	USA	No. Inj.Wells	0
SubDivision	WENDEL-AMEDEE,NE CAL	Fail_AbdWells	0
Res Owner	FEDERAL	Total Wells	2
Res Devel	TRANSPACIFIC GEOTH.	R_C Sludge	0 Tons per Month
A and E	BARBER NICHOLS ENG.	FinancOrganiz	0
PP Owner	TPG/US ENERGY	PwrSalePrice	????? \$US per KWH
Turb Source	BARBER NICHOLS	PPCmpltnYear	1988
PwrPurchaser	LASSEN MINING UTLITY	PPShutDownYr	0
PPContractor	N/A	GenrtrSource	BARBER NICHOLS
PPOwnrCntact	AVIV GOLDSMITH	ResOwnrCntact	N/A
His Employer	U.S. ENERGY	His Employer	U.S. BLM
His Phone	702/323-2866	His Phone	0
His Fax	0	His FAX	0
His TELEX	0	His TELEX	0
Gross Mw	3	PP Operator	U.S. ENERGY
Net Mw	2	GathSystCost	0 \$US Millions
TotWellProd	850 KLbs/hr.	Av Well Life	??? Years
TDS	0 PPM	H2S Sludge	0 Tons per Month
PP Lifetime	30 Years	Power Sales	0 KWH per Yea
Inlet Pres	0 psig	PowerSalesYr	????
InitResTemp	228 Degrees F	InitialTotNCG	0 Weight %
TotExplCost	0 \$US Millions	Initial CO2	???? Weight %
Av Well Cost	0 \$US Millions	Initial H2S	???? Weight %
Subsurf Area	0 Sq.Km	CurrentTotNCG	0 Weight %
Tot PP Cost	0 \$US Millions	CurrentCO2	???? Weight %
TotProjCost	9 \$US Millions	CurrentH2S	???? Weight %
Availability	0 %	NCGTrtmtSyst	N/A
Yr. of Avail	0		

PP Name HONEY LAKE
 PP Site CALIFORNIA
 Status 0
 OperDate 01/01/88
 Nation USA
 SubDivision SUSANVILLE, CA
 Res Owner PRIVATE
 Res Devel GEOPRODUCTS
 A and E N/A
 PP Owner GEOPRODUCTS
 Turb Source N/A
 PwrPurchaser PG&E
 PPContractor N/A
 PPOwnrCntact KEN BOREN
 His Employer GEOPRODUCTS
 His Phone 415/935-9627
 His Fax 0
 His TELEX 0
 Gross Mw 0
 Net Mw 30
 TotWellProd 0 KLbs/hr.
 TDS 2000 PPM
 PP Lifetime 30 Years
 Inlet Pres 0 psig
 InitResTemp 228 Degrees F
 TotExplCost 0 \$US Millions
 Av Well Cost 0 \$US Millions
 Subsurf Area 0 Sq.Km
 Tot PP Cost 0 \$US Millions
 TotProjCost 0 \$US Millions
 Availability 0 %
 Yr. of Avail 0

PPCycleType BINARY
 Inlet Temp 228 Degrees F
 Av Well Depth 6000 Feet
 No. ProdWells 3
 No. Inj.Wells 0
 Fail_AbdWells 0
 Total Wells 3
 R_C Sludge 0 Tons per Month
 FinancOrganiz 0
 PwrSalePrice ????? \$US per KWH
 PPCmpltnYear 1988
 PPShutDownYr 0
 GenrtrSource N/A
 ResOwnrCntact KEN BOREN
 His Employer GEOPRODUCTS
 His Phone 415/935-9627
 His FAX 0
 His TELEX 0
 PP Operator GEOPRODUCTS
 GathSystCost 0 \$US Millions
 Av Well Life ??? Years
 H2S Sludge 0 Tons per Month
 Power Sales 0 KWH per Yea
 PowerSalesYr ?????
 InitialTotNCG 0 Weight %
 Initial CO2 ????? Weight %
 Initial H2S ????? Weight %
 CurrentTotNCG 0 Weight %
 CurrentCO2 ????? Weight %
 CurrentH2S ????? Weight %
 NCGTrtmtSyst N/A

PP Name	BLM WEST	PPCycleType	D FLASH
PP Site	CALIFORNIA	Inlet Temp	450 Degrees F
Status	0	Av Well Depth	0 Feet
OperDate	12/31/89	No. ProdWells	0
Nation	USA	No. Inj.Wells	0
SubDivision	COSO, CA	Fail AbdWells	0
Res Owner	U.S. BLM	Total Wells	0
Res Devel	CECI	R_C Sludge	0 Tons per Month
A and E	MISSION	FinancOrganiz	0
PP Owner	CECI	PwrSalePrice	????? \$US per KWH
Turb Source	FUJI	PPCmpltnYear	1989
PwrPurchaser	SO. CAL. EDISON	PPShutDownYr	0
PPContractor	N/A	GenrtrSource	FUJI
PPOwnrCntact	CHARLES CONDY	ResOwnrCntact	N/A
His Employer	CECI	His Employer	U.S. BLM
His Phone	415/391-7700	His Phone	0
His Fax	0	His FAX	0
His TELEX	0	His TELEX	0
Gross Mw	0	PP Operator	CECI
Net Mw	28	GathSystCost	0 \$US Millions
TotWellProd	0 KLbs/hr.	Av Well Life	??? Years
TDS	0 PPM	H2S Sludge	0 Tons per Month
PP Lifetime	30 Years	Power Sales	0 KWH per Yea
Inlet Pres	0 psig	PowerSalesYr	????
InitResTemp	450 Degrees F	InitialTotNCG	0 Weight %
TotExplCost	0 \$US Millions	Initial CO2	???? Weight %
Av Well Cost	0 \$US Millions	Initial H2S	???? Weight %
Subsurf Area	0 Sq.Km	CurrentTotNCG	0 Weight %
Tot PP Cost	0 \$US Millions	CurrentCO2	???? Weight %
TotProjCost	0 \$US Millions	CurrentH2S	???? Weight %
Availability	0 %	NCGTrtmtSyst	REINJECTION
Yr. of Avail	0		

PP Name	NAVY 1 UNIT 1	PPCycleType	D FLASH
PP Site	CALIFORNIA	Inlet Temp	450 Degrees F
Status	0	Av Well Depth	6000 Feet
OperDate	07/01/87	No. ProdWells	9
Nation	USA	No. Inj.Wells	3
SubDivision	COSO AREA	Fail_AbdWells	0
Res Owner	US NAVY	Total Wells	12
Res Devel	CALIFORNIA ENERGY CO	R C Sludge	0 Tons per Month
A and E	CEC + MISSION ENERGY	FinancOrganiz	CREDIT SWISS
PP Owner	CEC+MISSION ENERGY	PwrSalePrice	????? \$US per KWH
Turb Source	MITSUBISHI	PPCmpltnYear	1987
PwrPurchaser	SO. CAL. EDISON	PPShutDownYr	0
PPContractor	CALIFORNIA ENERGY CO	GenrtrSource	MITSUBISHI
PPOwnrCntact	N/A	ResOwnrCntact	N/A
His Employer	0	His Employer	0
His Phone	0	His Phone	0
His Fax	0	His FAX	0
His TELEX	0	His TELEX	0
Gross Mw	0	PP Operator	CALIFORNIA ENERGY CO
Net Mw	30	GathSystCost	0 \$US Millions
TotWellProd	0 KLbs/hr.	Av Well Life	??? Years
TDS	6000 PPM	H2S Sludge	0 Tons per Month
PP Lifetime	30 Years	Power Sales	0 KWH per Yea
Inlet Pres	0 psig	PowerSalesYr	????
InitResTemp	450 Degrees F	InitialTotNCG	0 Weight %
TotExplCost	23 \$US Millions	Initial CO2	???? Weight %
Av Well Cost	0 \$US Millions	Initial H2S	???? Weight %
Subsurf Area	0 Sq.Km	CurrentTotNCG	0 Weight %
Tot PP Cost	48 \$US Millions	CurrentCO2	???? Weight %
TotProjCost	71 \$US Millions	CurrentH2S	???? Weight %
Availability	90 %	NCGTrtmtSyst	REINJECTION
Yr. of Avail	0		

PP Name	NAVY 1, UNIT 2	PPCycleType	D FLASH
PP Site	CALIFORNIA	Inlet Temp	450 Degrees F
Status	0	Av Well Depth	0 Feet
OperDate	03/01/88	No. ProdWells	9
Nation	USA	No. Inj.Wells	3
SubDivision	COSO/NAVY AREA, CA	Fail_AbdWells	0
Res Owner	U.S. NAVY	Total Wells	12
Res Devel	CAL ENRGY CO/MISSION	R_C Sludge	0 Tons per Month
A and E	CECI	FinancOrganiz	CREDITE SWISSE
PP Owner	CECI/MISSION	PwrSalePrice	????? \$US per KWH
Turb Source	FUJI	PPCmpltnYear	1988
PwrPurchaser	SO. CAL. EDISON	PPShutDownYr	0
PPContractor	CECI/MISSION	GenrtrSource	FUJI
PPOwnrCntact	CHARLES CONDY	ResOwnrCntact	N/A
His Employer	CECI	His Employer	U.S. NAVY
His Phone	415/391-7700	His Phone	0
His Fax	0	His FAX	0
His TELEX	0	His TELEX	0
Gross Mw	0	PP Operator	CECI
Net Mw	25	GathSystCost	0 \$US Millions
TotWellProd	0 KLbs/hr.	Av Well Life	??? Years
TDS	6000 PPM	H2S Sludge	0 Tons per Month
PP Lifetime	30 Years	Power Sales	0 KWH per Yea
Inlet Pres	0 psig	PowerSalesYr	????
InitResTemp	450 Degrees F	InitialTotNCG	0 Weight %
TotExplCost	0 \$US Millions	Initial CO2	???? Weight %
Av Well Cost	0 \$US Millions	Initial H2S	???? Weight %
Subsurf Area	0 Sq.Km	CurrentTotNCG	0 Weight %
Tot PP Cost	0 \$US Millions	CurrentCO2	???? Weight %
TotProjCost	0 \$US Millions	CurrentH2S	???? Weight %
Availability	90 %	NCGTrtmtSyst	REINJECTION
Yr. of Avail	1989		

PP Name	NAVY 1, UNIT 3	PPCycleType	D FLASH
PP Site	CALIFORNIA	Inlet Temp	450 Degrees F
Status	0	Av Well Depth	0 Feet
OperDate	03/01/88	No. ProdWells	0
Nation	USA	No. Inj.Wells	0
SubDivision	COSO NAVY AREA, CA	Fail_AbdWells	0
Res Owner	CECI/MISSION	Total Wells	0
Res Devel	CECI/MISSION	R_C Sludge	0 Tons per Month
A and E	CECI	FinancOrganiz	CREDITE SWISSE
PP Owner	CECI/MISSION	PwrSalePrice	????? \$US per KWH
Turb Source	FUJI	PPCmpltnYear	1988
PwrPurchaser	SO. CAL. EDISON	PPShutDownYr	0
PPContractor	CECI/MISSION	GenrtrSource	FUJI
PPOwnrCntact	CHARLES CONDY	ResOwnrCntact	N/A
His Employer	CECI	His Employer	U.S. NAVY
His Phone	415/391-7700	His Phone	0
His Fax	0	His FAX	0
His TELEX	0	His TELEX	0
Gross Mw	0	PP Operator	CECI/MISSION
Net Mw	25	GathSystCost	0 \$US Millions
TotWellProd	0 KLbs/hr.	Av Well Life	??? Years
TDS	6000 PPM	H2S Sludge	0 Tons per Month
PP Lifetime	30 Years	Power Sales	0 KWH per Yea
Inlet Pres	0 psig	PowerSalesYr	????
InitResTemp	450 Degrees F	InitialTotNCG	0 Weight %
TotExplCost	0 \$US Millions	Initial CO2	???? Weight %
Av Well Cost	0 \$US Millions	Initial H2S	???? Weight %
Subsurf Area	0 Sq.Km	CurrentTotNCG	0 Weight %
Tot PP Cost	0 \$US Millions	CurrentCO2	???? Weight %
TotProjCost	0 \$US Millions	CurrentH2S	???? Weight %
Availability	90 %	NCGTrtmtSyst	REINJECTION
Yr. of Avail	1989		

PP Name	NAVY 2, UNIT 4	PPCycleType	D FLASH
PP Site	CALIFORNIA	Inlet Temp	450 Degrees F
Status	0	Av Well Depth	0 Feet
OperDate	12/31/89	No. ProdWells	0
Nation	USA	No. Inj.Wells	0
SubDivision	COSO NAVY AREA, CA	Fail_AbdWells	0
Res Owner	U.S. NAVY	Total Wells	0
Res Devel	CECI/MISSION	R_C Sludge	0 Tons per Month
A and E	CECI	FinancOrganiz	CREDITE SWISSE
PP Owner	CECI/MISSION	PwrSalePrice	????? \$US per KWH
Turb Source	FUJI	PPCmpltnYear	1989
PwrPurchaser	SO. CAL. EDISON	PPShutDownYr	0
PPContractor	CECI/MISSION	GenrtrSource	FUJI
PPOwnrCntact	CHARLES CONDY	ResOwnrCntact	N/A
His Employer	CECI	His Employer	U. S. NAVY
His Phone	415/391-7700	His Phone	0
His Fax	0	His FAX	0
His TELEX	0	His TELEX	0
Gross Mw	0	PP Operator	CECI/MISSION
Net Mw	30	GathSystCost	0 \$US Millions
TotWellProd	0 KLbs/hr.	Av Well Life	??? Years
TDS	0 PPM	H2S Sludge	0 Tons per Month
PP Lifetime	30 Years	Power Sales	0 KWH per Yea
Inlet Pres	0 psig	PowerSalesYr	????
InitResTemp	450 Degrees F	InitialTotNCG	0 Weight %
TotExplCost	0 \$US Millions	Initial CO2	???? Weight %
Av Well Cost	0 \$US Millions	Initial H2S	???? Weight %
Subsurf Area	0 Sq.Km	CurrentTotNCG	0 Weight %
Tot PP Cost	0 \$US Millions	CurrentCO2	???? Weight %
TotProjCost	0 \$US Millions	CurrentH2S	???? Weight %
Availability	0 %	NCGTrtmtSyst	REINJECTION
Yr. of Avail	1989		

PP Name	NAVY 2, UNIT 5	PPCycleType	D FLASH
PP Site	CALIFORNIA	Inlet Temp	450 Degrees F
Status	0	Av Well Depth	0 Feet
OperDate	12/31/89	No. ProdWells	0
Nation	USA	No. Inj.Wells	0
SubDivision	COSO NAVY AREA, CA	Fail_AbdWells	0
Res Owner	U.S. NAVY	Total Wells	0
Res Devel	CECI/MISSION	R_C Sludge	0 Tons per Month
A and E	CECI	FinancOrganiz	N/A
PP Owner	CECI/MISSION	PwrSalePrice	????? \$US per KWH
Turb Source	FUJI	PPCmpltnYear	1989
PwrPurchaser	SO. CAL. EDISON	PPShutDownYr	0
PPContractor	CECI	GenrtrSource	FUJI
PPOwnrCntact	CHARLES CONDY	ResOwnrCntact	N/A
His Employer	CECI	His Employer	U. S. NAVY
His Phone	415/391-7700	His Phone	0
His Fax	0	His FAX	0
His TELEX	0	His TELEX	0
Gross Mw	0	PP Operator	CECI/MISSION
Net Mw	25	GathSystCost	0 \$US Millions
TotWellProd	0 KLbs/hr.	Av Well Life	??? Years
TDS	0 PPM	H2S Sludge	0 Tons per Month
PP Lifetime	30 Years	Power Sales	0 KWH per Yea
Inlet Pres	0 psig	PowerSalesYr	????
InitResTemp	450 Degrees F	InitialTotNCG	0 Weight %
TotExplCost	0 \$US Millions	Initial CO2	???? Weight %
Av Well Cost	0 \$US Millions	Initial H2S	???? Weight %
Subsurf Area	0 Sq.Km	CurrentTotNCG	0 Weight %
Tot PP Cost	0 \$US Millions	CurrentCO2	???? Weight %
TotProjCost	0 \$US Millions	CurrentH2S	???? Weight %
Availability	0 %	NCGTrtmtSyst	REINJECTION
Yr. of Avail	0		

PP Name	NAVY 2, UNIT 6	PPCycleType	D FLASH
PP Site	CALIFORNIA	Inlet Temp	450 Degrees F
Status	0	Av Well Depth	0 Feet
OperDate	12/31/89	No. ProdWells	0
Nation	USA	No. Inj.Wells	0
SubDivision	COSO, CA	Fail_AbdWells	0
Res Owner	U. S. NAVY	Total Wells	0
Res Devel	CAL ENRGY CO/MISSION	R C Sludge	0 Tons per Month
A and E	N/A	FinancOrganiz	CREDITE SWISSE
PP Owner	CECI/MISSION	PwrSalePrice	????? \$US per KWH
Turb Source	FUJI	PPCmpltnYear	1989
PwrPurchaser	SO. CAL. EDISON	PPShutDownYr	0
PPContractor	N/A	GenrtrSource	FUJI
PPOwnrCntact	CHARLES CONDY	ResOwnrCntact	N/A
His Employer	CECI	His Employer	U.S. NAVY
His Phone	415/391-7700	His Phone	0
His Fax	0	His FAX	0
His TELEX	0	His TELEX	0
Gross Mw	0	PP Operator	CECI/MISSION
Net Mw	25	GathSystCost	0 \$US Millions
TotWellProd	0 KLbs/hr.	Av Well Life	??? Years
TDS	6000 PPM	H2S Sludge	0 Tons per Month
PP Lifetime	30 Years	Power Sales	0 KWH per Yea
Inlet Pres	0 psig	PowerSalesYr	????
InitResTemp	450 Degrees F	InitialTotNCG	0 Weight %
TotExplCost	0 \$US Millions	Initial CO2	???? Weight %
Av Well Cost	0 \$US Millions	Initial H2S	???? Weight %
Subsurf Area	0 Sq.Km	CurrentTotNCG	0 Weight %
Tot PP Cost	0 \$US Millions	CurrentCO2	???? Weight %
TotProjCost	0 \$US Millions	CurrentH2S	???? Weight %
Availability	0 %	NCGTrtmtSyst	REINJECTION
Yr. of Avail	0		

PP Name	BLM EAST UNIT 1	PPCycleType	D FLASH
PP Site	CALIFORNIA	Inlet Temp	450 Degrees F
Status	0	Av Well Depth	0 Feet
OperDate	12/01/88	No. ProdWells	0
Nation	USA	No. Inj.Wells	0
SubDivision	COSO, CA	Fail_AbdWells	0
Res Owner	U.S. BLM	Total Wells	0
Res Devel	CECI	R C Sludge	0 Tons per Month
A and E	MISSION	FinancOrganiz	0
PP Owner	CECI	PwrSalePrice	????? \$US per KWH
Turb Source	FUJI	PPCmpltnYear	1988
PwrPurchaser	SO. CAL. EDISON	PPShutDownYr	0
PPContractor	N/A	GenrtrSource	FUJI
PPOwnrCntact	CHARLES CONDY	ResOwnrCntact	N/A
His Employer	CECI	His Employer	U.S. BLM
His Phone	415/391-7700	His Phone	0
His Fax	0	His FAX	0
His TELEX	0	His TELEX	0
Gross Mw	25	PP Operator	CECI
Net Mw	24	GathSystCost	0 \$US Millions
TotWellProd	0 KLbs/hr.	Av Well Life	??? Years
TDS	0 PPM	H2S Sludge	0 Tons per Month
PP Lifetime	30 Years	Power Sales	0 KWH per Yea
Inlet Pres	0 psig	PowerSalesYr	????
InitResTemp	450 Degrees F	InitialTotNCG	0 Weight %
TotExplCost	0 \$US Millions	Initial CO2	???? Weight %
Av Well Cost	0 \$US Millions	Initial H2S	???? Weight %
Subsurf Area	0 Sq.Km	CurrentTotNCG	0 Weight %
Tot PP Cost	0 \$US Millions	CurrentCO2	???? Weight %
TotProjCost	0 \$US Millions	CurrentH2S	???? Weight %
Availability	0 %	NCGTrtmtSyst	REINJECTION
Yr. of Avail	0		

PP Name	BLM EAST, UNIT 2	PPCycleType	D FLASH
PP Site	CALIFORNIA	Inlet Temp	450 Degrees F
Status	0	Av Well Depth	0 Feet
OperDate	12/01/88	No. ProdWells	0
Nation	USA	No. Inj.Wells	0
SubDivision	COSO, CA	Fail_AbdWells	0
Res Owner	U.S.BLM	Total Wells	0
Res Devel	CECI	R_C Sludge	0 Tons per Month
A and E	MISSION	FinancOrganiz	0
PP Owner	CECI	PwrSalePrice	????? \$US per KWH
Turb Source	FUJI	PPCmpltnYear	1988
PwrPurchaser	SO. CAL. EDISON	PPShutDownYr	0
PPContractor	N/A	GenrtrSource	FUJI
PPOwnrCntact	CHARLES CONDY	ResOwnrCntact	N/A
His Employer	CECI	His Employer	U.S. BLM
His Phone	415/391-7700	His Phone	0
His Fax	0	His FAX	0
His TELEX	0	His TELEX	0
Gross Mw	25	PP Operator	CECI
Net Mw	24	GathSystCost	0 \$US Millions
TotWellProd	0 KLbs/hr.	Av Well Life	??? Years
TDS	0 PPM	H2S Sludge	0 Tons per Month
PP Lifetime	30 Years	Power Sales	0 KWH per Yea
Inlet Pres	0 psig	PowerSalesYr	????
InitResTemp	450 Degrees F	InitialTotNCG	0 Weight %
TotExplCost	0 \$US Millions	Initial CO2	???? Weight %
Av Well Cost	0 \$US Millions	Initial H2S	???? Weight %
Subsurf Area	0 Sq.Km	CurrentTotNCG	0 Weight %
Tot PP Cost	0 \$US Millions	CurrentCO2	???? Weight %
TotProjCost	0 \$US Millions	CurrentH2S	???? Weight %
Availability	0 %	NCGTrtmtSyst	REINJECTION
Yr. of Avail	0		

PP Name	SALTON SEA UNIT 2	PPCycleType	D FLASH
PP Site	CALIFORNIA	Inlet Temp	600 Degrees F
Status	0	Av Well Depth	5000 Feet
OperDate	03/01/90	No. ProdWells	0
Nation	USA	No. Inj.Wells	0
SubDivision	SALTON SEA, CA	Fail_AbdWells	0
Res Owner	PRIVATE	Total Wells	0
Res Devel	UNOCAL/EARTH ENERGY	R_C Sludge	0 Tons per Month
A and E	N/A	FinancOrganiz	0
PP Owner	EARTH ENERGY	PwrSalePrice	????? \$US per KWH
Turb Source	N/A	PPCmpltnYear	1990
PwrPurchaser	SO. CAL. EDISON	PPShutDownYr	0
PPContractor	N/A	GenrtrSource	N/A
PPOwnrCntact	ERICK MACK	ResOwnrCntact	N/A
His Employer	UNOCAL	His Employer	N/A
His Phone	213/977-6336	His Phone	0
His Fax	0	His FAX	0
His TELEX	0	His TELEX	0
Gross Mw	0	PP Operator	EARTH ENERGY
Net Mw	18	GathSystCost	0 \$US Millions
TotWellProd	0 KLbs/hr.	Av Well Life	??? Years
TDS	0 PPM	H2S Sludge	0 Tons per Month
PP Lifetime	30 Years	Power Sales	0 KWH per Yea
Inlet Pres	0 psig	PowerSalesYr	????
InitResTemp	600 Degrees F	InitialTotNCG	0 Weight %
TotExplCost	0 \$US Millions	Initial CO2	???? Weight %
Av Well Cost	0 \$US Millions	Initial H2S	???? Weight %
Subsurf Area	0 Sq.Km	CurrentTotNCG	0 Weight %
Tot PP Cost	0 \$US Millions	CurrentCO2	???? Weight %
TotProjCost	0 \$US Millions	CurrentH2S	???? Weight %
Availability	0 %	NCGTrtmtSyst	N/A
Yr. of Avail	0		

PP Name	SALTON SEA UNIT 3	PPCycleType	D FLASH
PP Site	CALIFORNIA	Inlet Temp	525 Degrees F
Status	0	Av Well Depth	7400 Feet
OperDate	02/14/89	No. ProdWells	2
Nation	USA	No. Inj.Wells	3
SubDivision	SALTON SEA	Fail AbdWells	0
Res Owner	DESERT POWER/UNOCAL	Total Wells	5
Res Devel	DESERT POWER	R_C Sludge	0 Tons per Month
A and E	STONE & WEBSTER	FinancOrganiz	0
PP Owner	DESERT POWER	PwrSalePrice	????? \$US per KWH
Turb Source	mitsubishi	PPCmpltnYear	1989
PwrPurchaser	SO. CAL. EDISON	PPShutDownYr	0
PPContractor	N/A	GenrtrSource	mitsubishi
PPOwnrCntact	JACK ADRIAN	ResOwnrCntact	JACK ADRIAN
His Employer	DESERT POWER	His Employer	DESERT POWER
His Phone	818/302-6292	His Phone	818/302-6292
His Fax	0	His FAX	0
His TELEX	0	His TELEX	0
Gross Mw	0	PP Operator	DESERT POWER
Net Mw	50	GathSystCost	0 \$US Millions
TotWellProd	879000 KLbs/hr.	Av Well Life	??? Years
TDS	200000 PPM	H2S Sludge	0 Tons per Month
PP Lifetime	30 Years	Power Sales	0 KWH per Yea
Inlet Pres	0 psig	PowerSalesYr	????
InitResTemp	525 Degrees F	InitialTotNCG	0 Weight %
TotExplCost	0 \$US Millions	Initial CO2	???? Weight %
Av Well Cost	0 \$US Millions	Initial H2S	???? Weight %
Subsurf Area	0 Sq.Km	CurrentTotNCG	0 Weight %
Tot PP Cost	110 \$US Millions	CurrentCO2	???? Weight %
TotProjCost	0 \$US Millions	CurrentH2S	???? Weight %
Availability	0 %	NCGTrtmtSyst	N/A
Yr. of Avail	0		

PP Name	ORMESA 1	PPCycleType	BINARY
PP Site	CALIFORNIA CACD 45	Inlet Temp	0 Degrees F
Status	0	Av Well Depth	4500 Feet
OperDate	12/31/86	No. ProdWells	11
Nation	USA	No. Inj.Wells	4
SubDivision	IMPERIAL VALLEY	Fail AbdWells	0
Res Owner	FEDRAL	Total Wells	15
Res Devel	ORMAT ENERGY INC.	R C Sludge	0 Tons per Month
A and E	ORMAT	FinancOrganiz	0
PP Owner	ORMAT	PwrSalePrice	????? \$US per KWH
Turb Source	ORMAT	PPCmpltnYear	1986
PwrPurchaser	SO. CAL. EDISON	PPShutDownYr	0
PPContractor	ORMAT	GenrtrSource	ORMAT
PPOwnrCntact	HEZY RAM	ResOwnrCntact	N/A
His Employer	ORMAT	His Employer	BUR. LAND MGMT
His Phone	702/356-9111	His Phone	0
His Fax	0	His FAX	0
His TELEX	0	His TELEX	0
Gross Mw	30	PP Operator	ORMAT
Net Mw	24	GathSystCost	0 \$US Millions
TotWellProd	0 KLbs/hr.	Av Well Life	??? Years
TDS	1000 PPM	H2S Sludge	0 Tons per Month
PP Lifetime	30 Years	Power Sales	0 KWH per Yea
Inlet Pres	0 psig	PowerSalesYr	????
InitResTemp	325 Degrees F	InitialTotNCG	0 Weight %
TotExplCost	0 \$US Millions	Initial CO2	???? Weight %
Av Well Cost	0 \$US Millions	Initial H2S	???? Weight %
Subsurf Area	0 Sq.Km	CurrentTotNCG	0 Weight %
Tot PP Cost	0 \$US Millions	CurrentCO2	???? Weight %
TotProjCost	0 \$US Millions	CurrentH2S	???? Weight %
Availability	0 %	NCGTrtmtSyst	NONE
Yr. of Avail	0		

PP Name	ORMESA 2	PPCycleType	BINARY
PP Site	CALIFORNIA	Inlet Temp	330 Degrees F
Status	0	Av Well Depth	0 Feet
OperDate	01/01/88	No. ProdWells	7
Nation	USA	No. Inj.Wells	3
SubDivision	EAST MESA, IMP. VALL	Fail AbdWells	0
Res Owner	FEDERAL	Total Wells	10
Res Devel	ORMAT/HARBERT	R C Sludge	0 Tons per Month
A and E	ORMAT	FinancOrganiz	PRUDENTIAL
PP Owner	ORMAT	PwrSalePrice	????? \$US per KWH
Turb Source	ORMAT	PPCmpltnYear	1988
PwrPurchaser	SO. CAL. EDISON	PPShutDownYr	0
PPContractor	ORMAT	GenrtrSource	ORMAT
PPOwnrCntact	HEZY RAM	ResOwnrCntact	N/A
His Employer	ORMAT	His Employer	0
His Phone	702/356-9111	His Phone	0
His Fax	0	His FAX	0
His TELEX	0	His TELEX	0
Gross Mw	20	PP Operator	ORMAT
Net Mw	17	GathSystCost	0 \$US Millions
TotWellProd	0 KLbs/hr.	Av Well Life	??? Years
TDS	0 PPM	H2S Sludge	0 Tons per Month
PP Lifetime	30 Years	Power Sales	0 KWH per Yea
Inlet Pres	0 psig	PowerSalesYr	????
InitResTemp	330 Degrees F	InitialTotNCG	0 Weight %
TotExplCost	0 \$US Millions	Initial CO2	???? Weight %
Av Well Cost	0 \$US Millions	Initial H2S	???? Weight %
Subsurf Area	0 Sq.Km	CurrentTotNCG	0 Weight %
Tot PP Cost	0 \$US Millions	CurrentCO2	???? Weight %
TotProjCost	0 \$US Millions	CurrentH2S	???? Weight %
Availability	0 %	NCGTrtmtSyst	NONE
Yr. of Avail	0		

PP Name ORMESA 1E
 PP Site CALIFORNIA
 Status 0
 OperDate 12/31/88
 Nation USA
 SubDivision EAST MESA
 Res Owner FEDERAL
 Res Devel ORMAT
 A and E ORMAT
 PP Owner ORMAT
 Turb Source ORMAT
 PwrPurchaser SO. CAL. EDISON
 PPContractor ORMAT
 PPOwnrCntact HEZY RAM
 His Employer ORMAT
 His Phone 702/356-9111
 His Fax 0
 His TELEX 0
 Gross Mw 10
 Net Mw 8
 TotWellProd 280 KLbs/hr.
 TDS 0 PPM
 PP Lifetime 30 Years
 Inlet Pres 0 psig
 InitResTemp 320 Degrees F
 TotExplCost 0 \$US Millions
 Av Well Cost 0 \$US Millions
 Subsurf Area 0 Sq.Km
 Tot PP Cost 0 \$US Millions
 TotProjCost 0 \$US Millions
 Availability 0 %
 Yr. of Avail 0

PPCycleType BINARY
 Inlet Temp 293 Degrees F
 Av Well Depth 0 Feet
 No. ProdWells 4
 No. Inj.Wells 0
 Fail AbdWells 0
 Total Wells 4
 R_C Sludge 0 Tons per Month
 FinancOrganiz 0
 PwrSalePrice ????? \$US per KWH
 PPCmpltnYear 1988
 PPShutDownYr 0
 GenrtrSource ORMAT
 ResOwnrCntact N/A
 His Employer U.S. BLM
 His Phone 0
 His FAX 0
 His TELEX 0
 PP Operator ORMAT
 GathSystCost 0 \$US Millions
 Av Well Life ??? Years
 H2S Sludge 0 Tons per Month
 Power Sales 0 KWH per Yea
 PowerSalesYr ?????
 InitialTotNCG 0 Weight %
 Initial CO2 ????? Weight %
 Initial H2S ????? Weight %
 CurrentTotNCG 0 Weight %
 CurrentCO2 ????? Weight %
 CurrentH2S ????? Weight %
 NCGTrtmtSyst N/A

PP Name	ORMESA 1H	PPCycleType	BINARY
PP Site	CALIFORNIA	Inlet Temp	330 Degrees F
Status	0	Av Well Depth	6000 Feet
OperDate	12/31/89	No. ProdWells	3
Nation	USA	No. Inj.Wells	4
SubDivision	EAST MESA, CA	Fail_AbdWells	0
Res Owner	FEDERAL	Total Wells	7
Res Devel	ORMAT	R_C Sludge	0 Tons per Month
A and E	ORMAT	FinancOrganiz	BNKRS TRST/NOVA SCOTIA B
PP Owner	ORMAT	PwrSalePrice	????? \$US per KWH
Turb Source	ORMAT	PPCmpltnYear	1989
PwrPurchaser	SO.CAL. EDISON	PPShutDownYr	0
PPContractor	HARBERT INTERNAT.	GenrtrSource	ORMAT
PPOwnrCntact	HEZY RAM	ResOwnrCntact	N/A
His Employer	ORMAT	His Employer	U.S. BLM
His Phone	702/356-9111	His Phone	0
His Fax	0	His FAX	0
His TELEX	0	His TELEX	0
Gross Mw	0	PP Operator	ORMAT
Net Mw	6	GathSystCost	0 \$US Millions
TotWellProd	0 KLbs/hr.	Av Well Life	??? Years
TDS	0 PPM	H2S Sludge	0 Tons per Month
PP Lifetime	30 Years	Power Sales	0 KWH per Yea
Inlet Pres	0 psig	PowerSalesYr	????
InitResTemp	330 Degrees F	InitialTotNCG	0 Weight %
TotExplCost	0 \$US Millions	Initial CO2	???? Weight %
Av Well Cost	0 \$US Millions	Initial H2S	???? Weight %
Subsurf Area	0 Sq.Km	CurrentTotNCG	0 Weight %
Tot PP Cost	0 \$US Millions	CurrentCO2	???? Weight %
TotProjCost	0 \$US Millions	CurrentH2S	???? Weight %
Availability	94 %	NCGTrtmtSyst	NONE
Yr. of Avail	1990		

PP Name	GEM 2 AND 3	PPCycleType	D FLASH
PP Site	CALIFORNIA	Inlet Temp	340 Degrees F
Status	0	Av Well Depth	8000 Feet
OperDate	04/28/89	No. ProdWells	14
Nation	USA	No. Inj.Wells	14
SubDivision	IMPERIAL VALLEY	Fail AbdWells	0
Res Owner	FEDERAL	Total Wells	28
Res Devel	GEO OPERATOR CO	R_C Sludge	0 Tons per Month
A and E	STONE & WEBSTER	FinancOrganiz	N/A
PP Owner	GEO OPERATOR CORP	PwrSalePrice	????? \$US per KWH
Turb Source	MITSUBISHI	PPCmpltnYear	1989
PwrPurchaser	SO. CAL. EDISON	PPShutDownYr	0
PPContractor	BECHTEL CORP	GenrtrSource	MITSUBISHI
PPOwnrCntact	N/A	ResOwnrCntact	N/A
His Employer	GEO OPERATOR CORP	His Employer	BUR. LAND MGMT
His Phone	0	His Phone	0
His Fax	0	His FAX	0
His TELEX	0	His TELEX	0
Gross Mw	50	PP Operator	GEO OPERATOR CORP
Net Mw	40	GathSystCost	0 \$US Millions
TotWellProd	7700 KLbs/hr.	Av Well Life	??? Years
TDS	0 PPM	H2S Sludge	0 Tons per Month
PP Lifetime	30 Years	Power Sales	0 KWH per Yea
Inlet Pres	50 psig	PowerSalesYr	????
InitResTemp	360 Degrees F	InitialTotNCG	0 Weight %
TotExplCost	0 \$US Millions	Initial CO2	???? Weight %
Av Well Cost	0 \$US Millions	Initial H2S	???? Weight %
Subsurf Area	0 Sq.Km	CurrentTotNCG	0 Weight %
Tot PP Cost	0 \$US Millions	CurrentCO2	???? Weight %
TotProjCost	0 \$US Millions	CurrentH2S	???? Weight %
Availability	0 %	NCGTrtmtSyst	N/A
Yr. of Avail	0		

PP Name	SALTON SEA UNIT 1	PPCycleType	S FLASH
PP Site	CALIFORNIA	Inlet Temp	590 Degrees F
Status	0	Av Well Depth	3500 Feet
OperDate	12/30/82	No. ProdWells	3
Nation	USA	No. Inj.Wells	4
SubDivision	SALTON SEA AREA	Fail_AbdWells	0
Res Owner	PRIVATE	Total Wells	7
Res Devel	EARTH ENERGY	R_C Sludge	0 Tons per Month
A and E	N/A	FinancOrganiz	N/A
PP Owner	EARTH ENERGY	PwrSalePrice	????? \$US per KWH
Turb Source	FUJI	PPCmpltnYear	1982
PwrPurchaser	SO. CAL. EDISON	PPShutDownYr	0
PPContractor	N/A	GenrtrSource	FUJI
PPOwnrCntact	N/A	ResOwnrCntact	N/A
His Employer	EARTH ENERGY	His Employer	EARTH ENERGY
His Phone	0	His Phone	0
His Fax	0	His FAX	0
His TELEX	0	His TELEX	0
Gross Mw	0.	PP Operator	EARTH ENERGY
Net Mw	10	GathSystCost	0 \$US Millions
TotWellProd	0 KLbs/hr.	Av Well Life	??? Years
TDS	250000 PPM	H2S Sludge	0 Tons per Month
PP Lifetime	30 Years	Power Sales	0 KWH per Yea
Inlet Pres	0 psig	PowerSalesYr	????
InitResTemp	590 Degrees F	InitialTotNCG	0 Weight %
TotExplCost	0 \$US Millions	Initial CO2	???? Weight %
Av Well Cost	0 \$US Millions	Initial H2S	???? Weight %
Subsurf Area	0 Sq.Km	CurrentTotNCG	0 Weight %
Tot PP Cost	0 \$US Millions	CurrentCO2	???? Weight %
TotProjCost	0 \$US Millions	CurrentH2S	???? Weight %
Availability	86 %	NCGTrtmtSyst	N/A
Yr. of Avail	0		

PP Name	HEBER FLASH 1	PPCycleType	D FLASH
PP Site	CALIFORNIA	Inlet Temp	0 Degrees F
Status	0	Av Well Depth	4000 Feet
OperDate	01/01/85	No. ProdWells	10
Nation	USA	No. Inj.Wells	9
SubDivision	IMPERIAL VALLEY	Fail AbdWells	0
Res Owner	N/A	Total Wells	19
Res Devel	CHEVRON RESOURCES	R_C Sludge	0 Tons per Month
A and E	GIBBS AND HILL	FinancOrganiz	GE CREDIT CORP.
PP Owner	DRAVO CONSTRUCTORS	PwrSalePrice	????? \$US per KWH
Turb Source	MITSUBISHI	PPCmpltnYear	1985
PwrPurchaser	SO. CAL. EDISON	PPShutDownYr	0
PPContractor	DRAVO CONTRACTORS	GenrtrSource	MITSUBISHI
PPOwnrCntact	N/A	ResOwnrCntact	N/A
His Employer	CALPINE CORP.0	His Employer	0
His Phone	0	His Phone	0
His Fax	0	His FAX	0
His TELEX	0	His TELEX	0
Gross Mw	52	PP Operator	CALPINE
Net Mw	47	GathSystCost	0 \$US Millions
TotWellProd	0 KLbs/hr.	Av Well Life	??? Years
TDS	15000 PPM	H2S Sludge	0 Tons per Month
PP Lifetime	30 Years	Power Sales	0 KWH per Yea
Inlet Pres	0 psig	PowerSalesYr	????
InitResTemp	370 Degrees F	InitialTotNCG	0 Weight %
TotExplCost	45 \$US Millions	Initial CO2	???? Weight %
Av Well Cost	0 \$US Millions	Initial H2S	???? Weight %
Subsurf Area	14 Sq.Km	CurrentTotNCG	0 Weight %
Tot PP Cost	85 \$US Millions	CurrentCO2	???? Weight %
TotProjCost	130 \$US Millions	CurrentH2S	???? Weight %
Availability	94 %	NCGTrtmtSyst	N/A
Yr. of Avail	0		

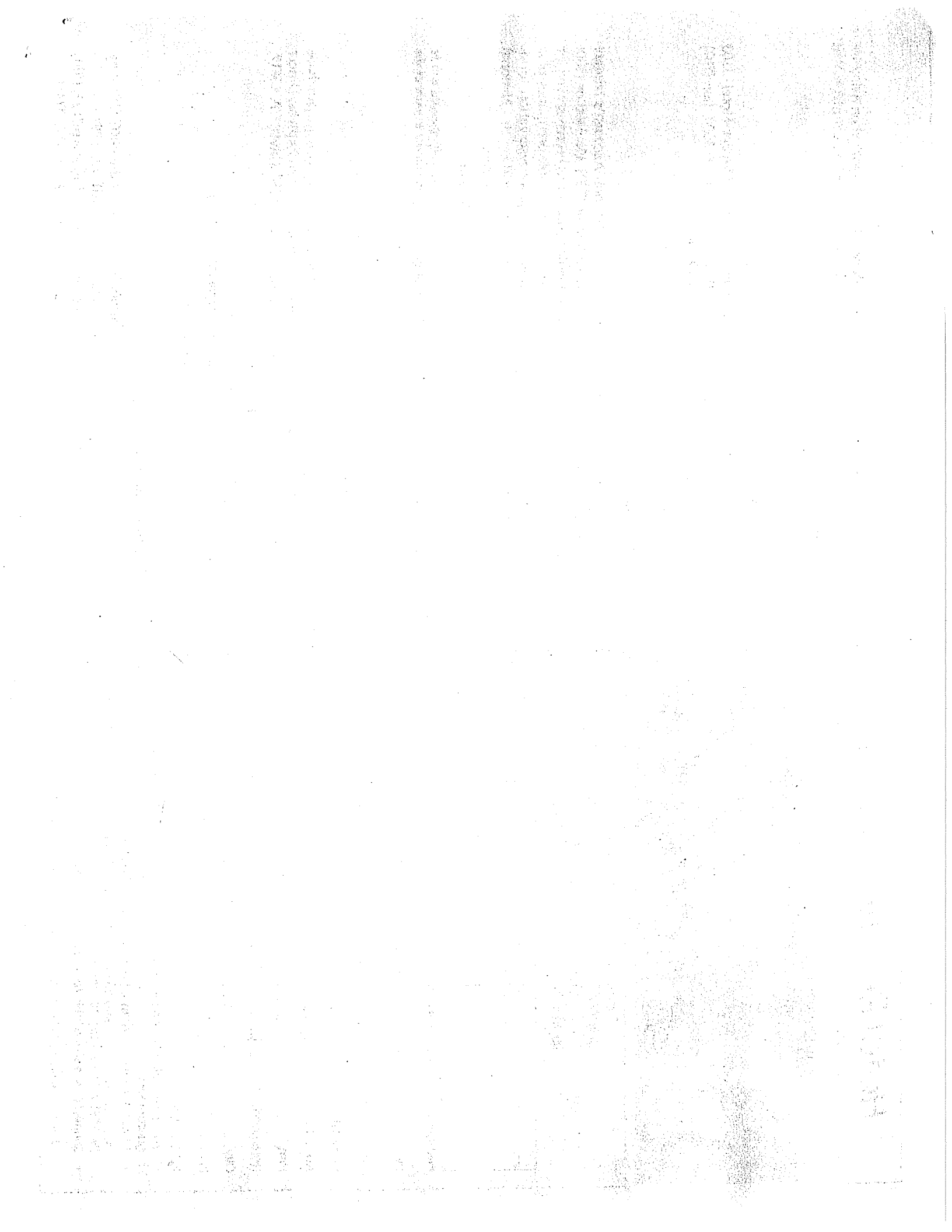
PP Name	LEATHERS 1	PPCycleType	D FLASH
PP Site	CALIFORNIA	Inlet Temp	525 Degrees F
Status	0	Av Well Depth	0 Feet
OperDate	01/01/89	No. ProdWells	0
Nation	USA	No. Inj.Wells	0
SubDivision	SALTON SEA	Fail_AbdWells	0
Res Owner	PRIVATE	Total Wells	0
Res Devel	MAGMA	R_C Sludge	0 Tons per Month
A and E	N/A	FinancOrganiz	0
PP Owner	MAGMA	PwrSalePrice	????? \$US per KWH
Turb Source	FUJI	PPCmpltnYear	1989
PwrPurchaser	SO. CAL. EDISON	PPShutDownYr	0
PPContractor	N/A	GenrtrSource	FUJI
PPOwnrCntact	ARNOLD JOHNSON	ResOwnrCntact	N/A
His Employer	MAGMA	His Employer	N/A
His Phone	619/487-9412	His Phone	0
His Fax	0	His FAX	0
His TELEX	0	His TELEX	0
Gross Mw	42	PP Operator	MAGMA
Net Mw	40	GathSystCost	0 \$US Millions
TotWellProd	0 KLbs/hr.	Av Well Life	??? Years
TDS	0 PPM	H2S Sludge	0 Tons per Month
PP Lifetime	30 Years	Power Sales	0 KWH per Yea
Inlet Pres	0 psig	PowerSalesYr	????
InitResTemp	525 Degrees F	InitialTotNCG	0 Weight %
TotExplCost	0 \$US Millions	Initial CO2	???? Weight %
Av Well Cost	0 \$US Millions	Initial H2S	???? Weight %
Subsurf Area	0 Sq.Km	CurrentTotNCG	0 Weight %
Tot PP Cost	0 \$US Millions	CurrentCO2	???? Weight %
TotProjCost	0 \$US Millions	CurrentH2S	???? Weight %
Availability	0 %	NCGTrtmtSyst	N/A
Yr. of Avail	0		

PP Name	DEL RANCH	PPCycleType	D FLASH
PP Site	CALIFORNIA	Inlet Temp	625 Degrees F
Status	0	Av Well Depth	0 Feet
OperDate	01/01/89	No. ProdWells	11
Nation	USA	No. Inj.Wells	0
SubDivision	SALTON SEA, CA	Fail AbdWells	0
Res Owner	PRIVATE	Total Wells	11
Res Devel	MAGMA/MISSION	R_C Sludge	0 Tons per Month
A and E	N/A	FinancOrganiz	0
PP Owner	MAGMA/MISSION	PwrSalePrice	????? \$US per KWH
Turb Source	FUJI	PPCmpltnYear	1989
PwrPurchaser	SO. CAL. EDISON	PPShutDownYr	0
PPContractor	N/A	GenrtrSource	FUJI
PPOwnrCntact	ARNOLD JOHNSON	ResOwnrCntact	N/A
His Employer	MAGMA	His Employer	N/A
His Phone	619/487-9412	His Phone	0
His Fax	0	His FAX	0
His TELEX	0	His TELEX	0
Gross Mw	42	PP Operator	MAGMA/MISSION
Net Mw	40	GathSystCost	0 \$US Millions
TotWellProd	4000 KLbs/hr.	Av Well Life	??? Years
TDS	0 PPM	H2S Sludge	0 Tons per Month
PP Lifetime	30 Years	Power Sales	0 KWH per Yea
Inlet Pres	0 psig	PowerSalesYr	????
InitResTemp	625 Degrees F	InitialTotNCG	0 Weight %
TotExplCost	0 \$US Millions	Initial CO2	???? Weight %
Av Well Cost	0 \$US Millions	Initial H2S	???? Weight %
Subsurf Area	0 Sq.Km	CurrentTotNCG	0 Weight %
Tot PP Cost	0 \$US Millions	CurrentCO2	???? Weight %
TotProjCost	0 \$US Millions	CurrentH2S	???? Weight %
Availability	0 %	NCGTrtmtSyst	N/A
Yr. of Avail	0		

PP Name	ELMORE 1	PPCycleType	D FLASH
PP Site	CALIFORNIA	Inlet Temp	525 Degrees F
Status	O	Av Well Depth	0 Feet
OperDate	01/01/89	No. ProdWells	12
Nation	USA	No. Inj.Wells	0
SubDivision	SALTON SEA	Fail AbdWells	0
Res Owner	PRIVATE	Total Wells	12
Res Devel	MAGMA/MISSION	R_C Sludge	0 Tons per Month
A and E	N/A	FinancOrganiz	0
PP Owner	MAGMA/MISSION	PwrSalePrice	????? \$US per KWH
Turb Source	FUJI	PPCmpltnYear	1989
PwrPurchaser	SO. CAL. EDISON	PPShutDownYr	0
PPContractor	N/A	GenrtrSource	FUJI
PPOwnrCntact	ARNOLD JOHNSON	ResOwnrCntact	N/A
His Employer	MAGMA	His Employer	N/A
His Phone	619/487-9412	His Phone	0
His Fax	0	His FAX	0
His TELEX	0	His TELEX	0
Gross Mw	42	PP Operator	MAGMA/MISSION
Net Mw	40	GathSystCost	0 \$US Millions
TotWellProd	4000 KLbs/hr.	Av Well Life	??? Years
TDS	0 PPM	H2S Sludge	0 Tons per Month
PP Lifetime	30 Years	Power Sales	0 KWH per Yea
Inlet Pres	0 psig	PowerSalesYr	????
InitResTemp	525 Degrees F	InitialTotNCG	0 Weight %
TotExplCost	0 \$US Millions	Initial CO2	???? Weight %
Av Well Cost	0 \$US Millions	Initial H2S	???? Weight %
Subsurf Area	0 Sq.Km	CurrentTotNCG	0 Weight %
Tot PP Cost	0 \$US Millions	CurrentCO2	???? Weight %
TotProjCost	0 \$US Millions	CurrentH2S	???? Weight %
Availability	0 %	NCGTrtmtSyst	N/A
Yr. of Avail	0		

PP Name	VULCAN	PPCycleType	D FLASH
PP Site	CALIFORNIA	Inlet Temp	350 Degrees F
Status	O	Av Well Depth	0 Feet
OperDate	02/01/86	No. ProdWells	12
Nation	USA	No. Inj.Wells	7
SubDivision	IMPERIAL VALLEY	Fail AbdWells	0
Res Owner	PRIVATE	Total Wells	19
Res Devel	MAGMA	R_C Sludge	0 Tons per Month
A and E	N/A	FinancOrganiz	MORGAN GUARANTEE
PP Owner	MAGMA	PwrSalePrice	????? \$US per KWH
Turb Source	MITSUBISHI	PPCmpltnYear	1986
PwrPurchaser	SO. CAL. EDISON	PPShutDownYr	0
PPContractor	MAGMA	GenrtrSource	MITSUBISHI
PPOwnrCntact	ARNOLD JOHNSON	ResOwnrCntact	N/A
His Employer	MAGMA	His Employer	0
His Phone	619/487-9412	His Phone	0
His Fax	0	His FAX	0
His TELEX	0	His TELEX	0
Gross Mw	40	PP Operator	MAGMA
Net Mw	38	GathSystCost	0 \$US Millions
TotWellProd	3000 KLbs/hr.	Av Well Life	??? Years
TDS	0 PPM	H2S Sludge	0 Tons per Month
PP Lifetime	30 Years	Power Sales	0 KWH per Yea
Inlet Pres	0 psig	PowerSalesYr	????
InitResTemp	350 Degrees F	InitialTotNCG	0 Weight %
TotExplCost	0 \$US Millions	Initial CO2	???? Weight %
Av Well Cost	0 \$US Millions	Initial H2S	???? Weight %
Subsurf Area	0 Sq.Km	CurrentTotNCG	0 Weight %
Tot PP Cost	69 \$US Millions	CurrentCO2	???? Weight %
TotProjCost	77 \$US Millions	CurrentH2S	???? Weight %
Availability	98 %	NCGTrtmtSyst	N/A
Yr. of Avail	0		

PP Name	GEM 1 (McCABE)	PPCycleType	BINARY
PP Site	CALIFORNIA CD 45	Inlet Temp	375 Degrees F
Status	0	Av Well Depth	3000 Feet
OperDate	02/01/80	No. ProdWells	3
Nation	USA	No. Inj.Wells	2
SubDivision	IMPERIAL VALLEY	Fail_AbdWells	2
Res Owner	FEDERAL	Total Wells	10
Res Devel	MAGMA POWER CO	R C Sludge	0 Tons per Month
A and E	N/A	FinancOrganiz	N/A
PP Owner	GEO OPERATOR CORP	PwrSalePrice	????? \$US per KWH
Turb Source	MAGMAMAX	PPCmpltnYear	1980
PwrPurchaser	SO. CAL. EDISON	PPShutDownYr	0
PPContractor	GEOETH. RESOURCES CO.	GenrtrSource	MAGMAMAX
PPOwnrCntact	N/A	ResOwnrCntact	
His Employer	GEO OPERATOR CORP	His Employer	BUR. LAND MGMT.
His Phone	0	His Phone	0
His Fax	0	His FAX	0
His TELEX	0	His TELEX	0
Gross Mw	14	PP Operator	GEO OPERATOR CORP
Net Mw	13	GathSystCost	0 \$US Millions
TotWellProd	151000 KLbs/hr.	Av Well Life	??? Years
TDS	999 PPM	H2S Sludge	0 Tons per Month
PP Lifetime	30 Years	Power Sales	0 KWH per Yea
Inlet Pres	240 psig	PowerSalesYr	????
InitResTemp	375 Degrees F	InitialTotNCG	0 Weight %
TotExplCost	2 \$US Millions	Initial CO2	???? Weight %
Av Well Cost	0 \$US Millions	Initial H2S	???? Weight %
Subsurf Area	0 Sq.Km	CurrentTotNCG	0 Weight %
Tot PP Cost	20 \$US Millions	CurrentCO2	???? Weight %
TotProjCost	25 \$US Millions	CurrentH2S	???? Weight %
Availability	98 %	NCGTrtmtSyst	N/A
Yr. of Avail	0		



PP Name	CAITHNESS/SEQUA	PPCycleType	S FLASH
PP Site	NEVADA	Inlet Temp	410 Degrees F
Status	0	Av Well Depth	2650 Feet
OperDate	02/14/88	No. ProdWells	3
Nation	USA	No. Inj.Wells	1
SubDivision	RENO, NV AREA	Fail AbdWells	0
Res Owner	FEDERAL	Total Wells	4
Res Devel	CAITHNESS/SEQUA	R C Sludge	0 Tons per Month
A and E	INDUSTRIAL/MISSION	FinancOrganiz	N/A
PP Owner	CAITHNESS/SEQUA	PwrSalePrice	????? \$US per KWH
Turb Source	GEOTHERMAL ENERGY CO	PPCmpltnYear	1988
PwrPurchaser	SIERRA PACIFIC	PPShutDownYr	0
PPContractor	GEOTHERMAL ENERGY CO	GenrtrSource	GEOTHERMAL POWER CO
PPOwnrCntact	H.A. BINGHAM	ResOwnrCntact	N/A
His Employer	CAITHNESS	His Employer	U.S.BLM
His Phone	212/921-9099	His Phone	0
His Fax	0	His FAX	0
His TELEX	0	His TELEX	0
Gross Mw	12	PP Operator	CAITHNESS
Net Mw	11	GathSystCost	0 \$US Millions
TotWellProd	2250 KLbs/hr.	Av Well Life	??? Years
TDS	0 PPM	H2S Sludge	0 Tons per Month
PP Lifetime	30 Years	Power Sales	0 KWH per Yea
Inlet Pres	120 psig	PowerSalesYr	????
InitResTemp	410 Degrees F	InitialTotNCG	0 Weight %
TotExplCost	0 \$US Millions	Initial CO2	???? Weight %
Av Well Cost	0 \$US Millions	Initial H2S	???? Weight %
Subsurf Area	12 Sq.Km	CurrentTotNCG	0 Weight %
Tot PP Cost	0 \$US Millions	CurrentCO2	???? Weight %
TotProjCost	15 \$US Millions	CurrentH2S	???? Weight %
Availability	99 %	NCGTrtmtSyst	N/A
Yr. of Avail	0		

PP Name	STEAMBOAT GEO I	PPCycleType	BINARY
PP Site	NEVADA	Inlet Temp	330 Degrees F
Status	0	Av Well Depth	0 Feet
OperDate	12/27/85	No. ProdWells	3
Nation	USA	No. Inj.Wells	3
SubDivision	RENO, NV AREA	Fail AbdWells	0
Res Owner	FEDERAL/PRIVATE	Total Wells	6
Res Devel	GEO THERMAL DEVELOP.	R C Sludge	0 Tons per Month
A and E	ORMAT	FinancOrganiz	FAR WEST CAPITAL
PP Owner	FAR WEST CAPITAL	PwrSalePrice	????? \$US per KWH
Turb Source	ORMAT	PPCmpltnYear	1987
PwrPurchaser	SIERRA PACIFIC	PPShutDownYr	0
PPContractor	ORMAT	GenrtrSource	ORMAT
PPOwnrCntact	N/A	ResOwnrCntact	N/A
His Employer	FAR WEST CAPITAL	His Employer	U.S.BLM
His Phone	0	His Phone	0
His Fax	0	His FAX	0
His TELEX	0	His TELEX	0
Gross Mw	7	PP Operator	FAR WEST CAPITAL
Net Mw	6	GathSystCost	0 \$US Millions
TotWellProd	0 KLbs/hr.	Av Well Life	??? Years
TDS	0 PPM	H2S Sludge	0 Tons per Month
PP Lifetime	30 Years	Power Sales	0 KWH per Yea
Inlet Pres	0 psig	PowerSalesYr	????
InitResTemp	330 Degrees F	InitialTotNCG	0 Weight %
TotExplCost	0 \$US Millions	Initial CO2	???? Weight %
Av Well Cost	0 \$US Millions	Initial H2S	???? Weight %
Subsurf Area	0 Sq.Km	CurrentTotNCG	0 Weight %
Tot PP Cost	0 \$US Millions	CurrentCO2	???? Weight %
TotProjCost	0 \$US Millions	CurrentH2S	???? Weight %
Availability	95 %	NCGTrtmtSyst	NONE
Yr. of Avail	1989		

PP Name	DESERT PEAK	PPCycleType	D FLASH
PP Site	NEVADA	Inlet Temp	410 Degrees F
Status	0	Av Well Depth	5500 Feet
OperDate	12/20/85	No. ProdWells	2
Nation	USA	No. Inj.Wells	1
SubDivision	LOVELOCK, NV AREA	Fail AbdWells	0
Res Owner	FEDERAL	Total Wells	3
Res Devel	FREEPORT	R C Sludge	0 Tons per Month
A and E	CHEVRON	FinancOrganiz	N/A
PP Owner	FREEPORT	PwrSalePrice	????? \$US per KWH
Turb Source	DELEVAL	PPCmpltnYear	1985
PwrPurchaser	SIERRA PACIFIC	PPShutDownYr	0
PPContractor	CHEVRON	GenrtrSource	DELEVAL
PPOwnrCntact	N/A	ResOwnrCntact	N/A
His Employer	CAL. ENERGY CORP.	His Employer	U.S. BLM
His Phone	0	His Phone	0
His Fax	0	His FAX	0
His TELEX	0	His TELEX	0
Gross Mw	11	PP Operator	CAL. ENERGY CO.
Net Mw	9	GathSystCost	0 \$US Millions
TotWellProd	1100 KLbs/hr.	Av Well Life	??? Years
TDS	7000 PPM	H2S Sludge	0 Tons per Month
PP Lifetime	30 Years	Power Sales	0 KWH per Yea
Inlet Pres	0 psig	PowerSalesYr	????
InitResTemp	410 Degrees F	InitialTotNCG	0 Weight %
TotExplCost	0 \$US Millions	Initial CO2	???? Weight %
Av Well Cost	0 \$US Millions	Initial H2S	???? Weight %
Subsurf Area	0 Sq.Km	CurrentTotNCG	0 Weight %
Tot PP Cost	0 \$US Millions	CurrentCO2	???? Weight %
TotProjCost	0 \$US Millions	CurrentH2S	???? Weight %
Availability	0 %	NCGTrtmtSyst	N/A
Yr. of Avail	0		

PP Name	EMPIRE GEO. PROJECT	PPCycleType	BINARY
PP Site	NEVADA	Inlet Temp	280 Degrees F
Status	0	Av Well Depth	700 Feet
OperDate	12/31/87	No. ProdWells	2
Nation	USA	No. Inj.Wells	1
SubDivision	GERLACH, NV AREA	Fail_AbdWells	0
Res Owner	FEDERAL	Total Wells	3
Res Devel	STEWART/ORMAT	R_C Sludge	0 Tons per Month
A and E	ORMAT	FinancOrganiz	ORMAT/CONSTELLATION
PP Owner	ORMAT	PwrSalePrice	????? \$US per KWH
Turb Source	ORMAT	PPCmpltnYear	1987
PwrPurchaser	SIERRA PACIFIC	PPShutDownYr	0
PPContractor	ORMAT	GenrtrSource	ORMAT
PPOwnrCntact	HEZY RAM	ResOwnrCntact	HEZY RAM
His Employer	ORMAT	His Employer	ORMAT
His Phone	702/356-8111	His Phone	702/356-8111
His Fax	0	His FAX	0
His TELEX	0	His TELEX	0
Gross Mw	0	PP Operator	ORMAT
Net Mw	3	GathSystCost	0 \$US Millions
TotWellProd	0 KLbs/hr.	Av Well Life	??? Years
TDS	0 PPM	H2S Sludge	0 Tons per Month
PP Lifetime	30 Years	Power Sales	0 KWH per Yea
Inlet Pres	0 psig	PowerSalesYr	????
InitResTemp	300 Degrees F	InitialTotNCG	0 Weight %
TotExplCost	0 \$US Millions	Initial CO2	???? Weight %
Av Well Cost	0 \$US Millions	Initial H2S	???? Weight %
Subsurf Area	0 Sq.Km	CurrentTotNCG	0 Weight %
Tot PP Cost	0 \$US Millions	CurrentCO2	???? Weight %
TotProjCost	9 \$US Millions	CurrentH2S	???? Weight %
Availability	0 %	NCGTrtmtSyst	NONE
Yr. of Avail	0		

PP Name	SODA LAKE 1	PPCycleType	BINARY
PP Site	NEVADA	Inlet Temp	340 Degrees F
Status	0	Av Well Depth	0 Feet
OperDate	12/31/87	No. ProdWells	0
Nation	USA	No. Inj.Wells	0
SubDivision	FALLON, NV AREA	Fail AbdWells	0
Res Owner	FEDERAL	Total Wells	0
Res Devel	CHEVRON	R C Sludge	0 Tons per Month
A and E	ORMAT	FinancOrganiz	ORMAT/CONSTELLATION
PP Owner	ORMAT	PwrSalePrice	????? \$US per KWH
Turb Source	ORMAT	PPCmpltnYear	1987
PwrPurchaser	SIERRA PACIFIC	PPShutDownYr	0
PPContractor	ORMAT	GenrtrSource	ORMAT
PPOwnrCntact	HEZY RAM	ResOwnrCntact	N/A
His Employer	ORMAT	His Employer	U.S. BLM
His Phone	702/356-8111	His Phone	0
His Fax	0	His FAX	0
His TELEX	0	His TELEX	0
Gross Mw	4	PP Operator	ORMAT
Net Mw	2	GathSystCost	0 \$US Millions
TotWellProd	0 KLbs/hr.	Av Well Life	??? Years
TDS	0 PPM	H2S Sludge	0 Tons per Month
PP Lifetime	30 Years	Power Sales	0 KWH per Yea
Inlet Pres	0 psig	PowerSalesYr	????
InitResTemp	340 Degrees F	InitialTotNCG	0 Weight %
TotExplCost	0 \$US Millions	Initial CO2	???? Weight %
Av Well Cost	0 \$US Millions	Initial H2S	???? Weight %
Subsurf Area	0 Sq.Km	CurrentTotNCG	0 Weight %
Tot PP Cost	6 \$US Millions	CurrentCO2	???? Weight %
TotProjCost	0 \$US Millions	CurrentH2S	???? Weight %
Availability	88 %	NCGTrtmtSyst	NONE
Yr. of Avail	1989		

PP Name	SODA LAKE 2	PPCycleType	BINARY
PP Site	NEVADA	Inlet Temp	340 Degrees F
Status	0	Av Well Depth	0 Feet
OperDate	08/31/90	No. ProdWells	0
Nation	USA	No. Inj.Wells	0
SubDivision	FALLON, NV AREA	Fail AbdWells	0
Res Owner	FEDERAL	Total Wells	0
Res Devel	CHEVRON/ORMAT	R_C Sludge	0 Tons per Month
A and E	ORMAT	FinancOrganiz	CONSTELLATION/LFC/ORMAT
PP Owner	ORMAT	PwrSalePrice	????? \$US per KWH
Turb Source	ORMAT	PPCmpltnYear	1990
PwrPurchaser	SIERRA PACIFIC	PPShutDownYr	0
PPContractor	ORMAT	GenrtrSource	ORMAT
PPOwnrCntact	HEZY RAM	ResOwnrCntact	N/A
His Employer	ORMAT	His Employer	U.S. BLM
His Phone	702/356-8111	His Phone	0
His Fax	0	His FAX	0
His TELEX	0	His TELEX	0
Gross Mw	15	PP Operator	ORMAT
Net Mw	13	GathSystCost	0 \$US Millions
TotWellProd	0 KLbs/hr.	Av Well Life	??? Years
TDS	0 PPM	H2S Sludge	0 Tons per Month
PP Lifetime	30 Years	Power Sales	0 KWH per Yea
Inlet Pres	0 psig	PowerSalesYr	????
InitResTemp	340 Degrees F	InitialTotNCG	0 Weight %
TotExplCost	0 \$US Millions	Initial CO2	???? Weight %
Av Well Cost	0 \$US Millions	Initial H2S	???? Weight %
Subsurf Area	0 Sq.Km	CurrentTotNCG	0 Weight %
Tot PP Cost	5 \$US Millions	CurrentCO2	???? Weight %
TotProjCost	0 \$US Millions	CurrentH2S	???? Weight %
Availability	88 %	NCGTrtmtSyst	NONE
Yr. of Avail	1990		

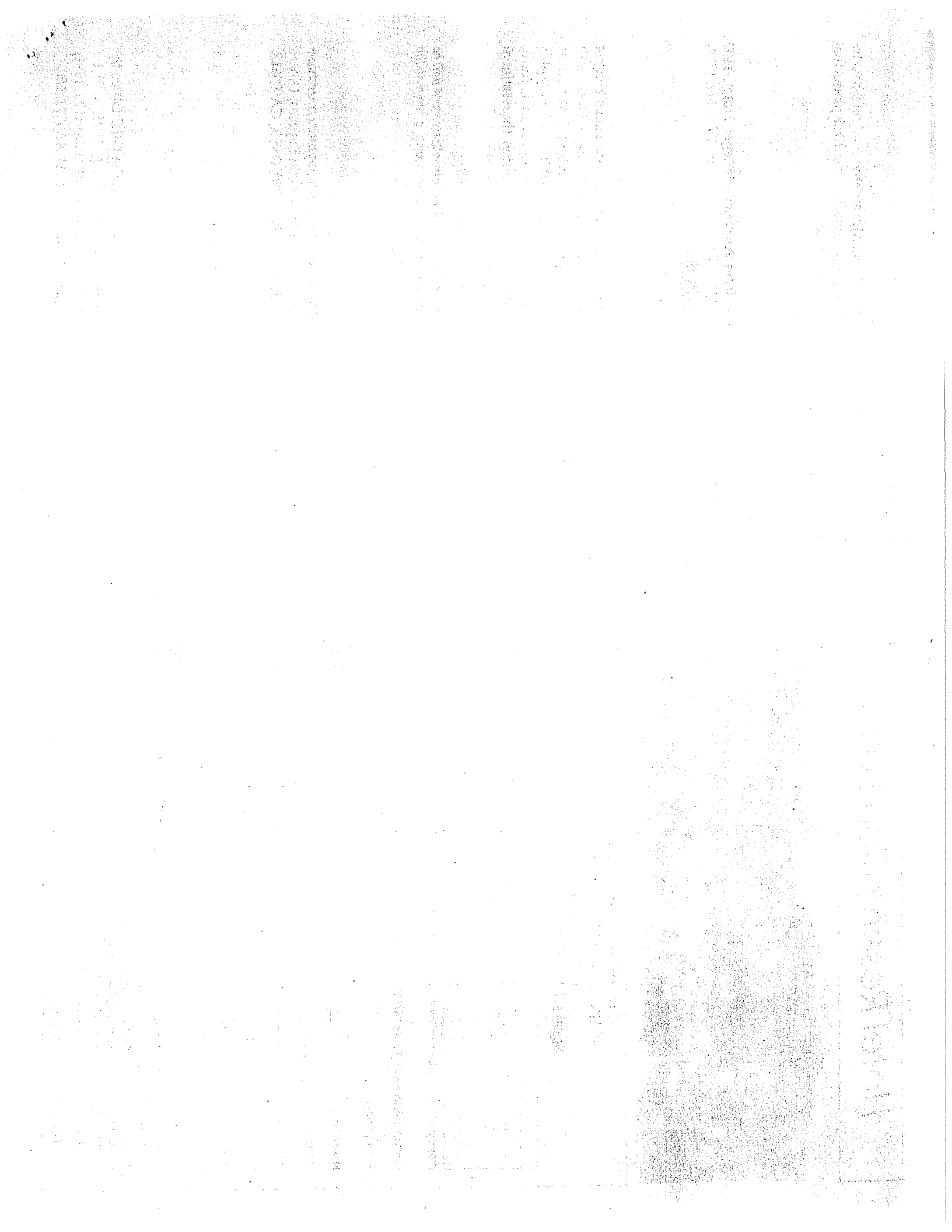
PP Name	SODA LAKE II	PPCycleType	BINARY
PP Site	NEVADA	Inlet Temp	338 Degrees F
Status	P	Av Well Depth	0 Feet
OperDate	06/30/91	No. ProdWells	0
Nation	USA	No. Inj.Wells	0
SubDivision	FALLON AREA,NV	Fail AbdWells	0
Res Owner	FEDERAL	Total Wells	0
Res Devel	ORMAT	R_C Sludge	0 Tons per Month
A and E	ORMAT	FinancOrganiz	ORMAT/CONSTELLATION
PP Owner	ORMAT	PwrSalePrice	????? \$US per KWH
Turb Source	ORMAT	PPCmpltnYear	1991
PwrPurchaser	SIERRA PACIFIC PWR	PPShutDownYr	0
PPContractor	ORMAT	GenrtrSource	ORMAT
PPOwnrCntact	HEZY RAM	ResOwnrCntact	N/A
His Employer	ORMAT	His Employer	U.S. BLM
His Phone	702/356-9111	His Phone	0
His Fax	0	His FAX	0
His TELEX	0	His TELEX	0
Gross Mw	13	PP Operator	ORMAT
Net Mw	13	GathSystCost	0 \$US Millions
TotWellProd	0 KLbs/hr.	Av Well Life	??? Years
TDS	0 PPM	H2S Sludge	0 Tons per Month
PP Lifetime	30 Years	Power Sales	0 KWH per Yea
Inlet Pres	0 psig	PowerSalesYr	????
InitResTemp	338 Degrees F	InitialTotNCG	0 Weight %
TotExplCost	0 \$US Millions	Initial CO2	???? Weight %
Av Well Cost	0 \$US Millions	Initial H2S	???? Weight %
Subsurf Area	0 Sq.Km	CurrentTotNCG	0 Weight %
Tot PP Cost	0 \$US Millions	CurrentCO2	???? Weight %
TotProjCost	0 \$US Millions	CurrentH2S	???? Weight %
Availability	0 %	NCGTrtmtSyst	NONE
Yr. of Avail	0		

PP Name	STILLWATER GEO. PROJ	PPCycleType	BINARY
PP Site	NEVADA	Inlet Temp	338 Degrees F
Status	0	Av Well Depth	0 Feet
OperDate	12/01/89	No. ProdWells	0
Nation	USA	No. Inj.Wells	0
SubDivision	FALLON, NV AREA	Fail AbdWells	0
Res Owner	FEDERAL	Total Wells	0
Res Devel	ORMAT ENERGY SYS INC	R_C Sludge	0 Tons per Month
A and E	ORMAT	FinancOrganiz	BNKRS TRST/NOVA SCOTIA B
PP Owner	OESI	PwrSalePrice	????? \$US per KWH
Turb Source	OESI	PPCmpltnYear	1989
PwrPurchaser	SIERRA PACIFIC PWR	PPShutDownYr	0
PPContractor	OESI	GenrtrSource	OESI
PPOwnrCntact	HEZY RAM	ResOwnrCntact	N/A
His Employer	OESI	His Employer	U.S. BLM
His Phone	702/356-9111	His Phone	0
His Fax	0	His FAX	0
His TELEX	0	His TELEX	0
Gross Mw	21	PP Operator	OESI
Net Mw	13	GathSystCost	0 \$US Millions
TotWellProd	0 KLbs/hr.	Av Well Life	??? Years
TDS	0 PPM	H2S Sludge	0 Tons per Month
PP Lifetime	30 Years	Power Sales	0 KWH per Yea
Inlet Pres	0 psig	PowerSalesYr	????
InitResTemp	338 Degrees F	InitialTotNCG	0 Weight %
TotExplCost	0 \$US Millions	Initial CO2	???? Weight %
Av Well Cost	0 \$US Millions	Initial H2S	???? Weight %
Subsurf Area	0 Sq.Km	CurrentTotNCG	0 Weight %
Tot PP Cost	0 \$US Millions	CurrentCO2	???? Weight %
TotProjCost	36 \$US Millions	CurrentH2S	???? Weight %
Availability	0 %	NCGTrtmtSyst	N/A
Yr. of Avail	0		

PP Name	BEOWAW	PPCycleType	D FLASH
PP Site	NEVADA	Inlet Temp	419 Degrees F
Status	0	Av Well Depth	9563 Feet
OperDate	12/01/85	No. ProdWells	2
Nation	USA	No. Inj.Wells	1
SubDivision	BATTLE MT AREA, NV	Fail_AbdWells	0
Res Owner	FEDERAL	Total Wells	3
Res Devel	CHEVRON GEOTHERMAL	R_C Sludge	0 Tons per Month
A and E	N/A	FinancOrganiz	0
PP Owner	CRESCENT VALLEY GEO	PwrSalePrice	????? \$US per KWH
Turb Source	MITSUBISHI	PPCmpltnYear	1985
PwrPurchaser	SO CAL EDISON	PPShutDownYr	0
PPContractor	N/A	GenrtrSource	MITSUBISHI
PPOwnrCntact	N/A	ResOwnrCntact	N/A
His Employer	CRESCENT VALLEY GEO	His Employer	U.S. BLM
His Phone	0	His Phone	0
His Fax	0	His FAX	0
His TELEX	0	His TELEX	0
Gross Mw	17	PP Operator	CRESCENT VALLEY GEO
Net Mw	15	GathSystCost	0 \$US Millions
TotWellProd	0 KLbs/hr.	Av Well Life	??? Years
TDS	1200 PPM	H2S Sludge	0 Tons per Month
PP Lifetime	30 Years	Power Sales	0 KWH per Yea
Inlet Pres	0 psig	PowerSalesYr	????
InitResTemp	419 Degrees F	InitialTotNCG	0 Weight %
TotExplCost	0 \$US Millions	Initial CO2	???? Weight %
Av Well Cost	0 \$US Millions	Initial H2S	???? Weight %
Subsurf Area	0 Sq.Km	CurrentTotNCG	0 Weight %
Tot PP Cost	0 \$US Millions	CurrentCO2	???? Weight %
TotProjCost	0 \$US Millions	CurrentH2S	???? Weight %
Availability	99 %	NCGTrtmtSyst	N/A
Yr. of Avail	1989		

PP Name	OXBOW-DIXIE VALLEY	PPCycleType	D FLASH
PP Site	NEVADA	Inlet Temp	338 Degrees F
Status	0	Av Well Depth	8000 Feet
OperDate	02/14/88	No. ProdWells	6
Nation	USA	No. Inj.Wells	4
SubDivision	DIXIE VALLEY, NV	Fail AbdWells	0
Res Owner	FEDERAL	Total Wells	10
Res Devel	EBASCO/E&L/HOLT CO.	R C Sludge	0 Tons per Month
A and E	N/A	FinancOrganiz	0
PP Owner	EBASCO/E&L/FUJI/HOLT	PwrSalePrice	????? \$US per KWH
Turb Source	FUJI	PPCmpltnYear	1988
PwrPurchaser	SO. CAL. EDISON	PPShutDownYr	0
PPContractor	OXBOW GEOTHERMAL	GenrtrSource	FUJI
PPOwnrCntact	DICK BENOIT	ResOwnrCntact	N/A
His Employer	OXBOW	His Employer	U.S. BLM
His Phone	702/322-1300	His Phone	0
His Fax	0	His FAX	0
His TELEX	0	His TELEX	0
Gross Mw	55	PP Operator	OXBOW
Net Mw	50	GathSystCost	0 \$US Millions
TotWellProd	0 KLbs/hr.	Av Well Life	??? Years
TDS	0 PPM	H2S Sludge	0 Tons per Month
PP Lifetime	30 Years	Power Sales	0 KWH per Yea
Inlet Pres	0 psig	PowerSalesYr	????
InitResTemp	338 Degrees F	InitialTotNCG	0 Weight %
TotExplCost	0 \$US Millions	Initial CO2	???? Weight %
Av Well Cost	0 \$US Millions	Initial H2S	???? Weight %
Subsurf Area	0 Sq.Km	CurrentTotNCG	0 Weight %
Tot PP Cost	0 \$US Millions	CurrentCO2	???? Weight %
TotProjCost	0 \$US Millions	CurrentH2S	???? Weight %
Availability	0 %	NCGTrtmtSyst	N/A
Yr. of Avail	0		

PP Name	TADS ENTERPRISES	PPCycleType	BINARY
PP Site	NEVADA	Inlet Temp	220 Degrees F
Status	0	Av Well Depth	300 Feet
OperDate	09/01/84	No. ProdWells	1
Nation	USA	No. Inj.Wells	0
SubDivision	WABUSKA, NV AREA	Fail AbdWells	0
Res Owner	TADS ENTERPRISES	Total Wells	0
Res Devel	TADS ENTERPRISES	R_C Sludge	0 Tons per Month
A and E	N/A	FinancOrganiz	GRACE TOWNSEND
PP Owner	TADS ENTERPRISES	PwrSalePrice	????? \$US per KWH
Turb Source	ORMAT	PPCmpltnYear	1984
PwrPurchaser	SIERRA PACIFIC	PPShutDownYr	0
PPContractor	TADS ENTERPRISES	GenrtrSource	ORMAT
PPOwnrCntact	N/A	ResOwnrCntact	N/A
His Employer	TADS ENTERPRISES	His Employer	TADS ENTERPRISES
His Phone	0	His Phone	0
His Fax	0	His FAX	0
His TELEX	0	His TELEX	0
Gross Mw	2	PP Operator	TADS ENTERPRISES
Net Mw	2	GathSystCost	0 \$US Millions
TotWellProd	0 KLbs/hr.	Av Well Life	??? Years
TDS	0 PPM	H2S Sludge	0 Tons per Month
PP Lifetime	30 Years	Power Sales	0 KWH per Yea
Inlet Pres	0 psig	PowerSalesYr	????
InitResTemp	220 Degrees F	InitialTotNCG	0 Weight %
TotExplCost	0 \$US Millions	Initial CO2	???? Weight %
Av Well Cost	0 \$US Millions	Initial H2S	???? Weight %
Subsurf Area	0 Sq.Km	CurrentTotNCG	0 Weight %
Tot PP Cost	0 \$US Millions	CurrentCO2	???? Weight %
TotProjCost	0 \$US Millions	CurrentH2S	???? Weight %
Availability	98 %	NCGTrtmtSyst	NONE
Yr. of Avail	0		



PP Name	COVE FORT GEO #1	PPCycleType	BINARY
PP Site	UTAH	Inlet Temp	330 Degrees F
Status	0	Av Well Depth	1300 Feet
OperDate	05/01/85	No. ProdWells	2
Nation	USA	No. Inj.Wells	1
SubDivision	I-15/I-70 INTERSECTN	Fail AbdWells	1
Res Owner	FEDERAL	Total Wells	4
Res Devel	MOTHER EARTH/PROVO	R_C Sludge	0 Tons per Month
A and E	ORMAT	FinancOrganiz	N/A
PP Owner	MOTHER EARTH/PROVO	PwrSalePrice	????? \$US per KWH
Turb Source	ORMAT	PPCmpltnYear	1985
PwrPurchaser	UT MUNICIPAL PWR AGENCY	PPShutDownYr	0
PPContractor	CITY OF PROVO	GenrtrSource	ORMAT
PPOwnrCntact	N/A	ResOwnrCntact	W.A. PORTANOVA
His Employer	CITY OF PROVO	His Employer	MOTHER EARTH IND.
His Phone	0	His Phone	602/998-3991
His Fax	0	His FAX	0
His TELEX	0	His TELEX	0
Gross Mw	7	PP Operator	CITY OF PROVO
Net Mw	3	GathSystCost	0 \$US Millions
TotWellProd	190000 KLbs/hr.	Av Well Life	??? Years
TDS	0 PPM	H2S Sludge	0 Tons per Month
PP Lifetime	30 Years	Power Sales	0 KWH per Yea
Inlet Pres	48 psig	PowerSalesYr	????
InitResTemp	330 Degrees F	InitialTotNCG	0 Weight %
TotExplCost	0 \$US Millions	Initial CO2	???? Weight %
Av Well Cost	0 \$US Millions	Initial H2S	???? Weight %
Subsurf Area	2 Sq.Km	CurrentTotNCG	0 Weight %
Tot PP Cost	0 \$US Millions	CurrentCO2	???? Weight %
TotProjCost	9 \$US Millions	CurrentH2S	???? Weight %
Availability	90 %	NCGTrtmtSyst	NONE
Yr. of Avail	0		

PP Name	COVE STEAM #2	PPCycleType	D STEAM
PP Site	UTAH	Inlet Temp	332 Degrees F
Status	0	Av Well Depth	800 Feet
OperDate	11/01/89	No. ProdWells	6
Nation	USA	No. Inj.Wells	1
SubDivision	BEAVER/FILMORE AREA	Fail_AbdWells	0
Res Owner	MOTHER EARTH INDUST.	Total Wells	7
Res Devel	MOTHER EARTH IND.	R C Sludge	0 Tons per Month
A and E	THE BEN HOLT CO.	FinancOrganiz	0
PP Owner	PROVO POWER	PwrSalePrice	????? \$US per KWH
Turb Source	GEO THERMAL POWER CO	PPCmpltnYear	1989
PwrPurchaser	PROVO POWER	PPShutDownYr	0
PPContractor	THE BEN HOLT CO	GenrtrSource	GEO THERMAL POWER CO
PPOwnrCntact	GARY SHULMAN	ResOwnrCntact	W.A. PORTANOVA
His Employer	GEO THERMAL POWER CO	His Employer	MOTHER EARTH IND.
His Phone	607/733-1027	His Phone	602/998-3991
His Fax	0	His FAX	0
His TELEX	0	His TELEX	0
Gross Mw	9	PP Operator	PROVO POWER
Net Mw	8	GathSystCost	0 \$US Millions
TotWellProd	24000 KLbs/hr.	Av Well Life	??? Years
TDS	0 PPM	H2S Sludge	0 Tons per Month
PP Lifetime	30 Years	Power Sales	0 KWH per Yea
Inlet Pres	32 psig	PowerSalesYr	????
InitResTemp	332 Degrees F	InitialTotNCG	0 Weight %
TotExplCost	0 \$US Millions	Initial CO2	???? Weight %
Av Well Cost	0 \$US Millions	Initial H2S	???? Weight %
Subsurf Area	1 Sq.Km	CurrentTotNCG	0 Weight %
Tot PP Cost	10 \$US Millions	CurrentCO2	???? Weight %
TotProjCost	0 \$US Millions	CurrentH2S	???? Weight %
Availability	0 %	NCGTrtmtSyst	LO-CAT SYSTEM
Yr. of Avail	0		

PP Name COVE FT TOPPING TRBN
 PP Site UTAH
 Status 0
 OperDate 01/01/88
 Nation USA
 SubDivision BEAVER/FILMORE AREA
 Res Owner FEDERAL/PRIVATE
 Res Devel MOTHER EARTH INDUST.
 A and E BARBER NICHOLS
 PP Owner MOTHER EARTH IND.
 Turb Source BARBER NICHOLS
 PwrPurchaser PROVO POWER
 PPContractor BARBER NICHOLS
 PPOwnrCntact KEN NICHOLS
 His Employer BARBER NICHOLS
 His Phone 303/421-8111
 His Fax 0
 His TELEX 0
 Gross Mw 1
 Net Mw 1
 TotWellProd 100000 KLbs/hr.
 TDS 0 PPM
 PP Lifetime 30 Years
 Inlet Pres 38 psig
 InitResTemp 332 Degrees F
 TotExplCost 0 \$US Millions
 Av Well Cost 0 \$US Millions
 Subsurf Area 1 Sq.Km
 Tot PP Cost 1 \$US Millions
 TotProjCost 0 \$US Millions
 Availability 90 %
 Yr. of Avail 1989

PPCycleType D STEAM
 Inlet Temp 332 Degrees F
 Av Well Depth 1100 Feet
 No. ProdWells 2
 No. Inj.Wells 1
 Fail AbdWells 0
 Total Wells 3
 R_C Sludge 0 Tons per Month
 FinancOrganiz MOTHER EARTH INDUSTRIES
 PwrSalePrice ????? \$US per KWH
 PPCmpltnYear 1988
 PPShutDownYr 0
 GenrtrSource BARBER NICHOLS
 ResOwnrCntact W.A. PORTANOVA
 His Employer MOTHER EARTH IND.
 His Phone 602/998-3991
 His FAX 0
 His TELEX 0
 PP Operator PROVO POWER
 GathSystCost 0 \$US Millions
 Av Well Life ??? Years
 H2S Sludge 0 Tons per Month
 Power Sales 0 KWH per Yea
 PowerSalesYr ?????
 InitialTotNCG 0 Weight %
 Initial CO2 ????? Weight %
 Initial H2S ????? Weight %
 CurrentTotNCG 0 Weight %
 CurrentCO2 ????? Weight %
 CurrentH2S ????? Weight %
 NCGTrtmtSyst STACK EMISSION

PP Name	BLUNDELL UNIT 1	PPCycleType	S FLASH
PP Site	UTAH	Inlet Temp	383 Degrees F
Status	0	Av Well Depth	0 Feet
OperDate	07/01/84	No. ProdWells	0
Nation	USA	No. Inj.Wells	0
SubDivision	MILFORD AREA	Fail AbdWells	0
Res Owner	FEDERAL	Total Wells	0
Res Devel	CALIFORNIA ENERGY	R C Sludge	0 Tons per Month
A and E	GIBBS & HILL	FinancOrganiz	N/A
PP Owner	PACIFICORPS	PwrSalePrice	????? \$US per KWH
Turb Source	GENERAL ELECTRIC	PPCmpltnYear	1984
PwrPurchaser	UTAH POWER AND LIGHT	PPShutDownYr	0
PPContractor	N/A	GenrtrSource	GENERAL ELECTRIC
PPOwnrCntact	N/A	ResOwnrCntact	N/A
His Employer	N/A	His Employer	0
His Phone	0	His Phone	0
His Fax	0	His FAX	0
His TELEX	0	His TELEX	0
Gross Mw	23	PP Operator	UTAH POWER AND LIGHT
Net Mw	20	GathSystCost	0 \$US Millions
TotWellProd	0 KLbs/hr.	Av Well Life	??? Years
TDS	7000 PPM	H2S Sludge	0 Tons per Month
PP Lifetime	30 Years	Power Sales	0 KWH per Yea
Inlet Pres	0 psig	PowerSalesYr	????
InitResTemp	383 Degrees F	InitialTotNCG	0 Weight %
TotExplCost	12 \$US Millions	Initial CO2	???? Weight %
Av Well Cost	0 \$US Millions	Initial H2S	???? Weight %
Subsurf Area	0 Sq.Km	CurrentTotNCG	0 Weight %
Tot PP Cost	23 \$US Millions	CurrentCO2	???? Weight %
TotProjCost	35 \$US Millions	CurrentH2S	???? Weight %
Availability	89 %	NCGTrtmtSyst	N/A
Yr. of Avail	0		