

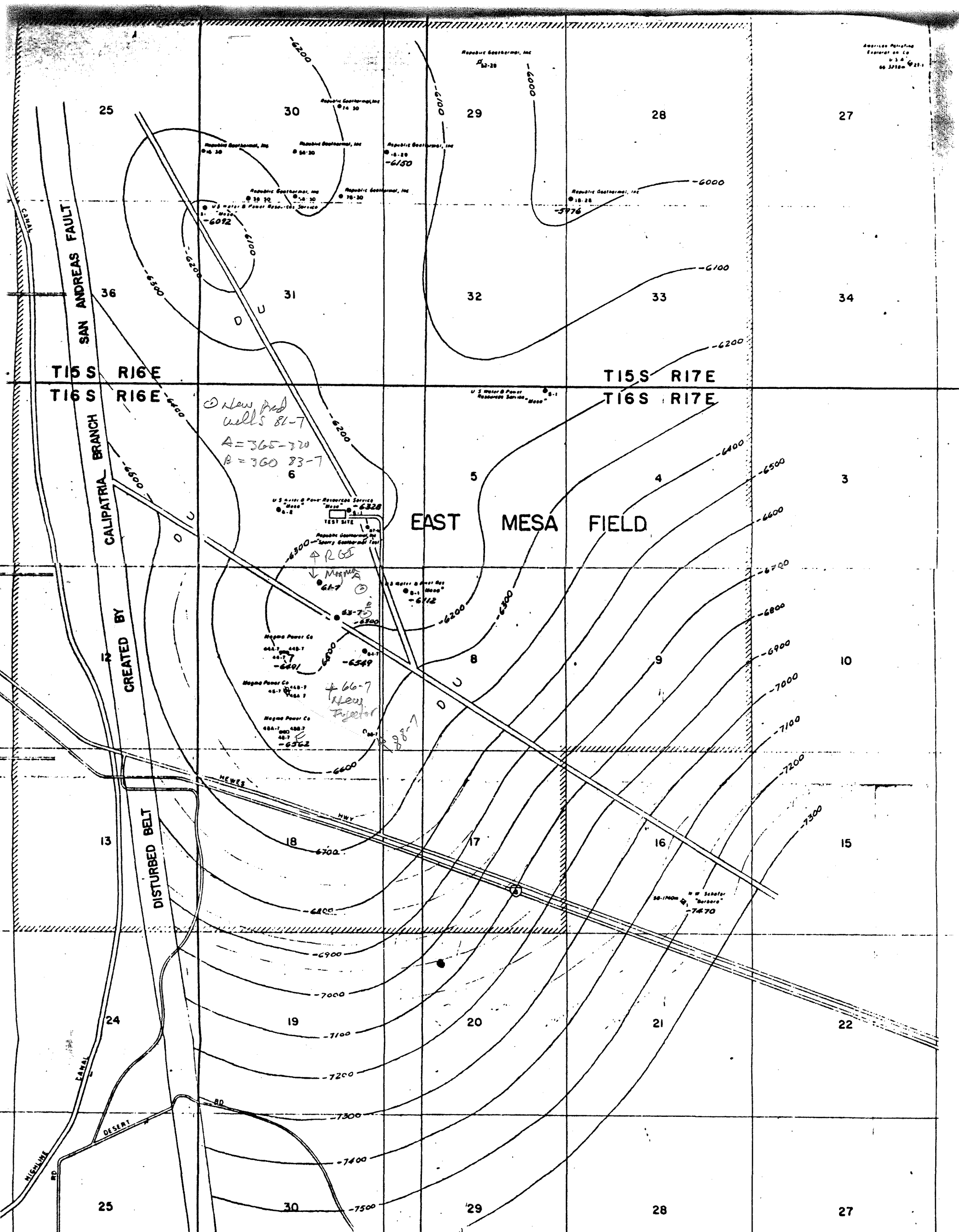
Figure 14.

Temperature logs and fluid inclusion homogenization temperatures for Mesa 31-1. Note the wide range of temperatures at a single depth between the different logging tools. Fluid inclusion temperatures bracket the general range of measured temperatures, indicating that temperatures in the past were about the same as the present.

Key to different logging runs:

- U.S.B.R., 1974
- Urban et al., 1978
- Dresser Atlas, 1978
- X GO Wireline, 1978
- △ NL McCullough, 1978
(Schlumberger tool failed)

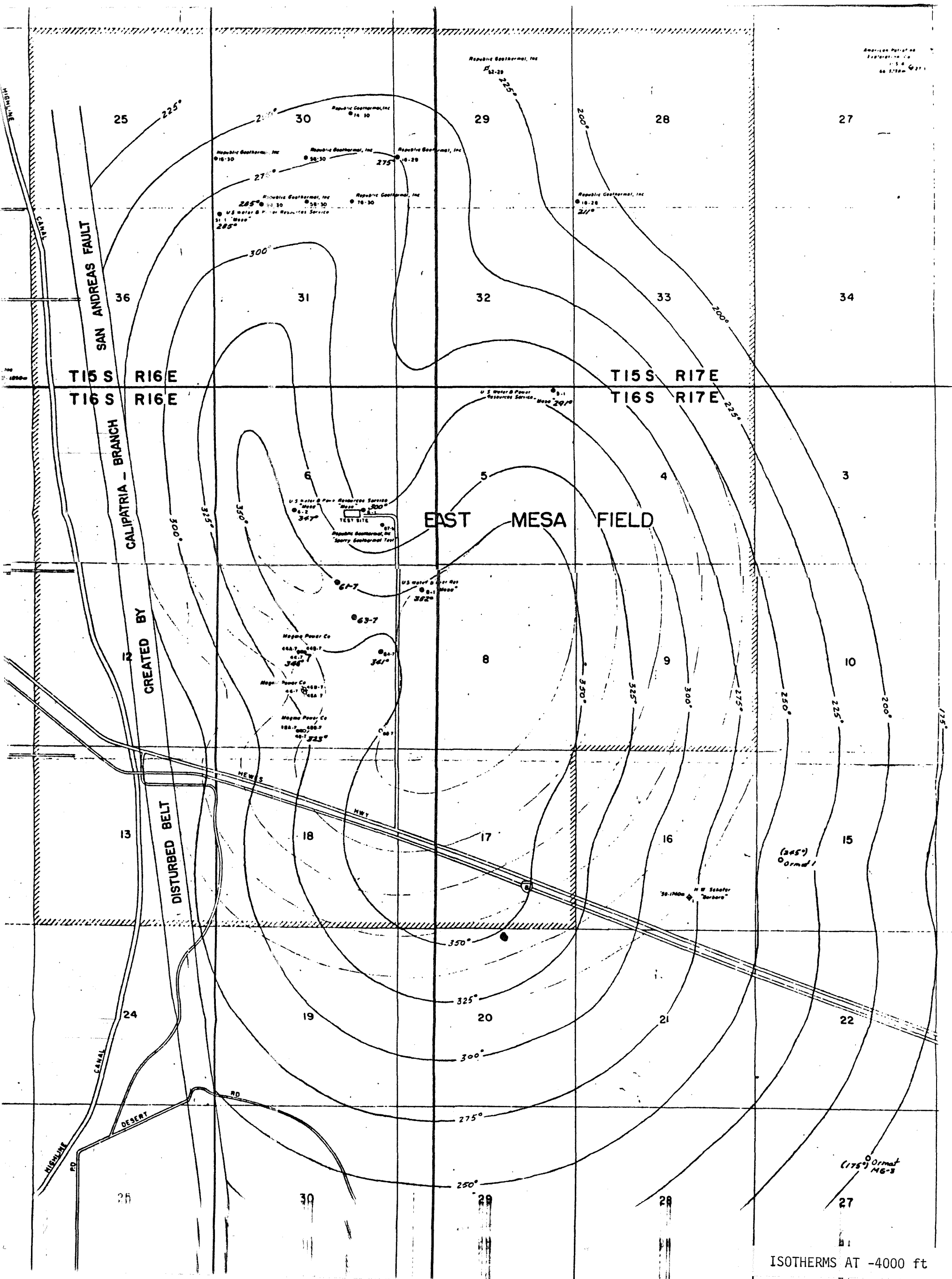
Fluid inclusions: The bracket shows the range, average and number of T_H measurements. If no number is present, the value is for a single inclusion.



New Prod
wells 81-7
A = 365-720
B = 360 83-7

EAST MESA FIELD

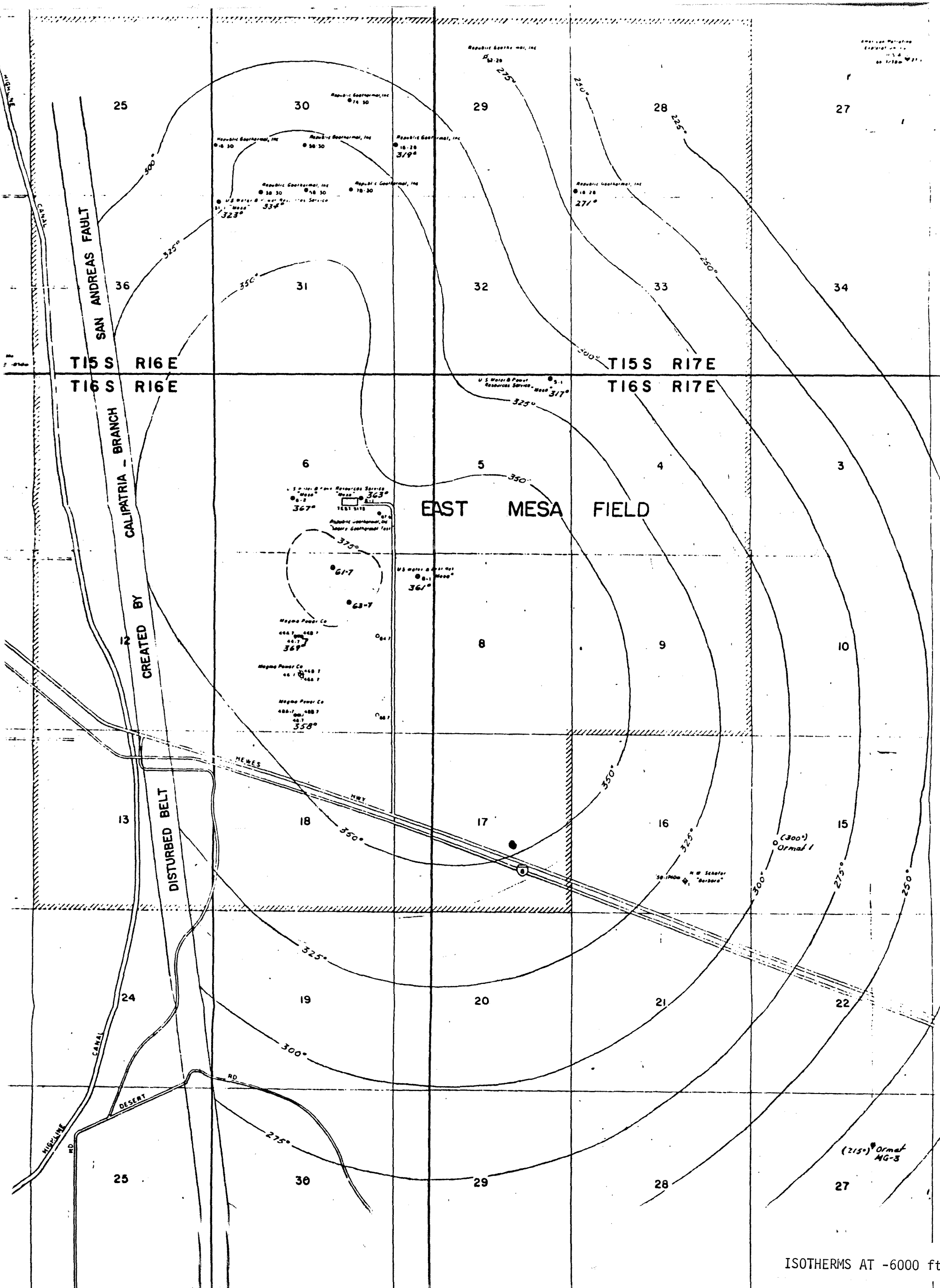
STRUCTURE CONTOUR MAP
Contours on 6500-ft zone in well 44-7



American Petroleum
Exploration Co.
1958
66-11224

EAST MESA FIELD

ISOOTHERMS AT -4000 ft



American Petroleum
 Exploration Co.
 1954
 1:125,000

ISOOTHERMS AT -6000 ft

