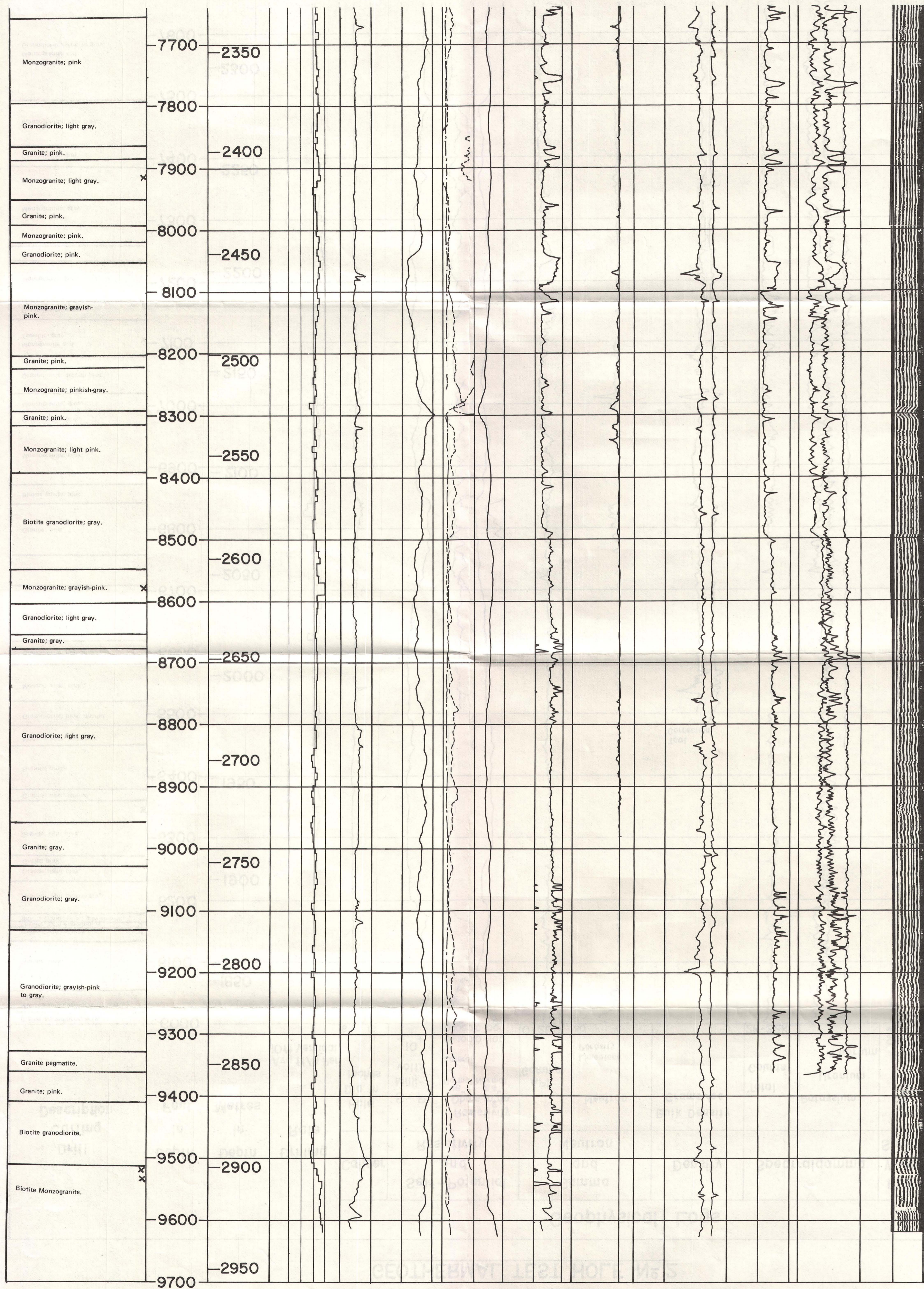


LOS ALAMOS SCIENTIFIC LABORATORY GEOHERMAL TEST HOLE N° 2

Drill Cutting Description	Depth In Feet	Depth In Metres	Drilling Rate Avg ft/h Per 10ft Vertical	Geophysical Logs												
				Caliper		Self-Potential and Resistivity		Gamma and Neutron		Density		Spectralgamma		Full Wave Sonic		
				Hole Dia. In Inches	S-P Milli-volts	Resistivity Ohms m ² /m		API Gamma	Neutron Limestone Porosity	Bulk Density Grams/cc		Total Counts	Potassium Uranium Thorium	Microseconds		
						16" Normal	64" Normal			2	3					
Biotite granodiorite; gray. Monzogranite; light pinkish-gray, altered.	6000			6	16	0-100	0-100	0-200	30	0	2	3	2K-22K		450	1450
Granite; pink.	6100	1850														
Granodiorite; grayish-pink. Granite; light grayish-pink. Biotite granodiorite; grayish-pink.	6200															
Granite; light pinkish-gray.	6200															
Granite; light pink.	6300															
Granite; light pink.	6300															
Granite; pink, altered.	6400	1950														
Granite; pink.	6400															
Monzogranite; light pink.	6500															
Granodiorite; pink, altered.	6500															
Monzogranite; pink..	6600	2000														
Granodiorite; pinkish-gray.	6600															
Monzogranite; gray.	6700															
Granodiorite; pink.	6800	2050														
Granite; pink.	6800															
Biotite gneiss; pink.	6900															
Monzogranite; pink.	6900	2100														
Granodiorite; pink.	7000															
Monzogranite; gray.	7000															
Granodiorite; grayish-pink.	7100	2150														
Monzogranite and Tonalite; gray.	7100															
Granodiorite; gray.	7200															
Monzogranite; gray.	7200	2200														
Granodiorite; gray.	7300															
Monzogranite; gray.	7300															
Granodiorite; gray.	7400	2250														
Monzogranite; dark gray.	7500															
Monzogranite and Granodiorite; pink to gray.	7600	2300														

Tool Correction



X-petrographic examination of thin section

SCIENTIFIC LABORATORY

373106 340