

GL03108-102 of 03

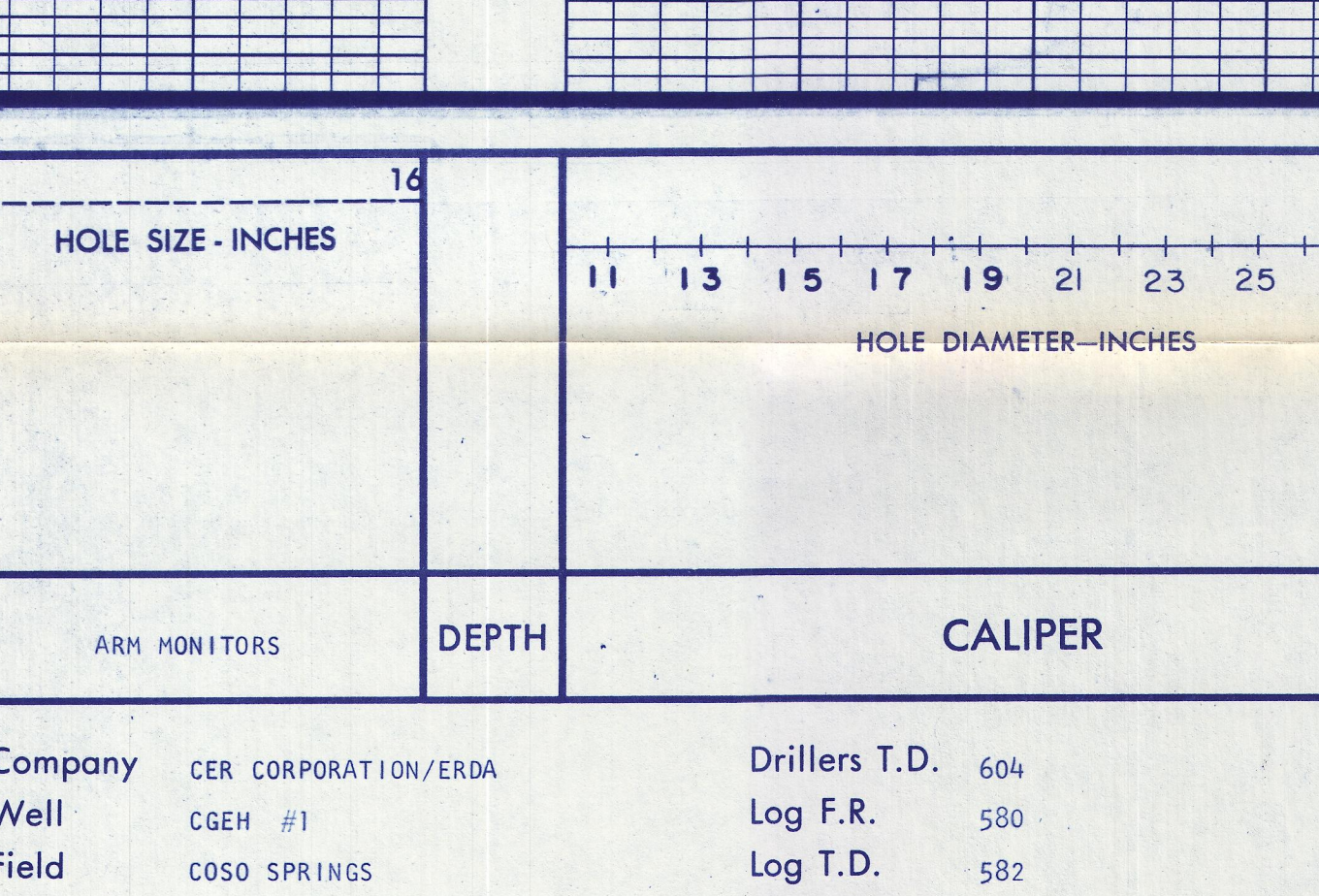
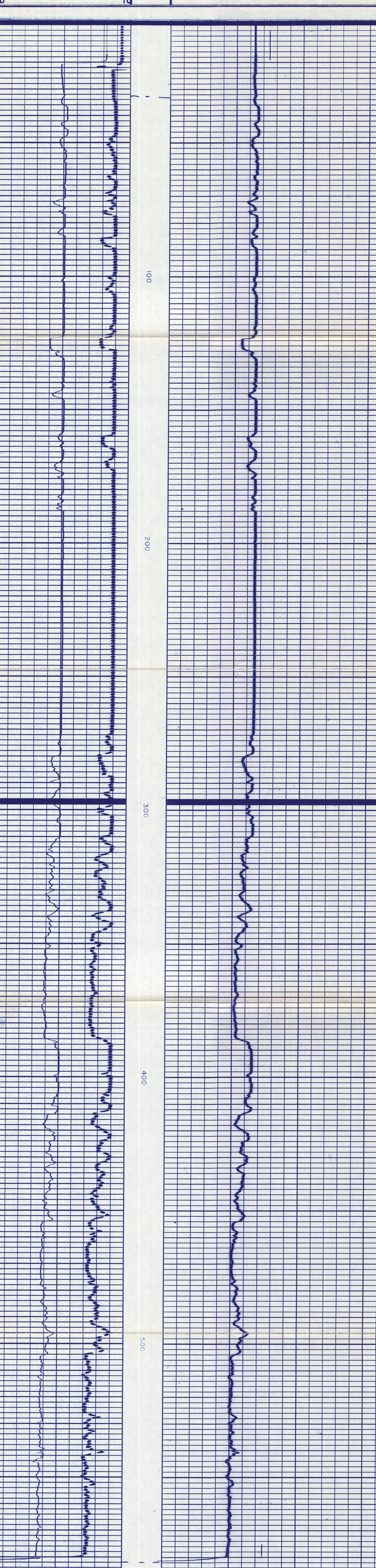
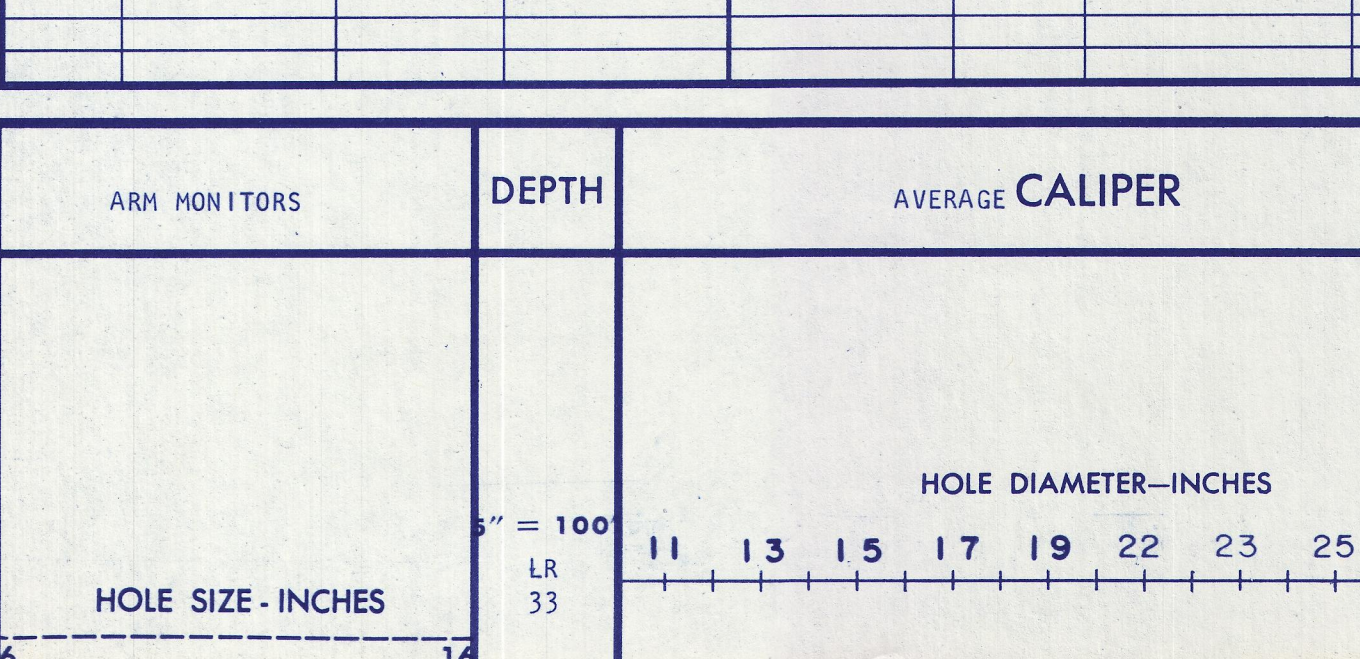


FILE NO.	COMPANY CER CORPORATION/ERDA	Other Services
5" = 100'	WELL CGEH #1	ILL
	FIELD COSO SPRINGS	TELE
	COUNTY INYO	STATE CALIFORNIA
	LOCATION: N/A	
SEC 6	TWP 22 S	RGE 39 E
Permanent Datum GL	Elev. 4340	KB Elevation
Logging Measured from KB	21 Ft. Above Permanent Datum	GL 1510
Date 9-19-77	Run No. ONE	
Depth-Driller 601	Depth-Logger 557	
Depth-Loghead 557	Tool Logged Interval 330	
Change-Driller 20 @ 55	Change-Logger 17 1/2	
Bit Size 1 7/8	Type Fluid In Hole GEL	
Density and Viscosity	pH and Fluid Loss	
Source of Sample	FLOWLINE	
Time @ Mass Temp. 4.31 @ 72 °F	Time @ Mass Temp. 5.23 @ 72 °F	
Time @ Mass Temp. 5.27 @ 72 °F	Time @ Mass Temp. 5.27 @ 72 °F	
Source of fluid and time	Time @ BHT 2.58 @ 120 °F	
Time Since Circ. 11:20 [GL] BKK.	Time Since Circ. 11:20 [GL] BKK.	
Max. Meas. Temp. Deg. F. 110.5	Max. Meas. Temp. Deg. F. 110.5	
Recorded by HIR	Recorded by HIR	
Witnessed by	Witnessed by	

THIS HEADING AND LOG CONFORMS TO API RECOMMENDED STANDARD PRACTICE RP-31

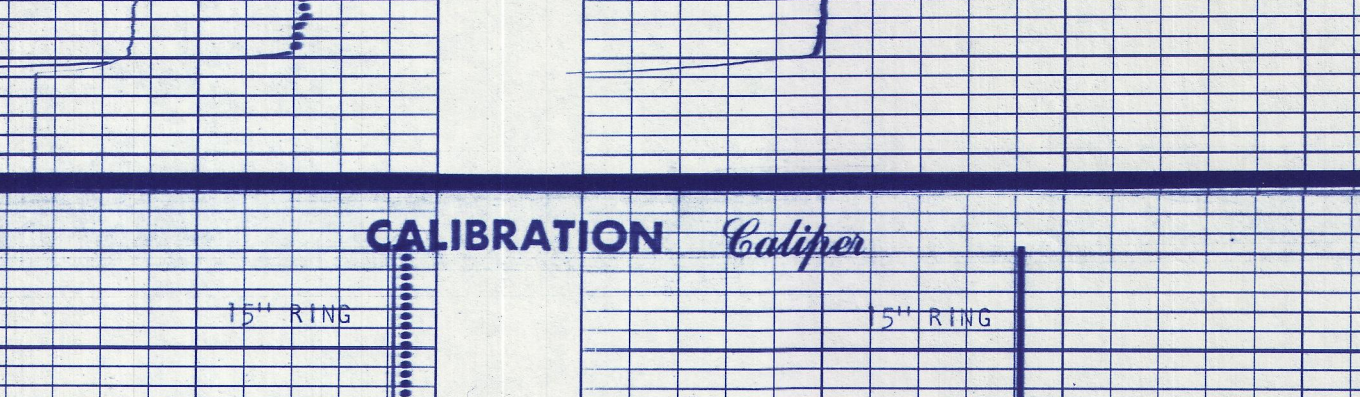
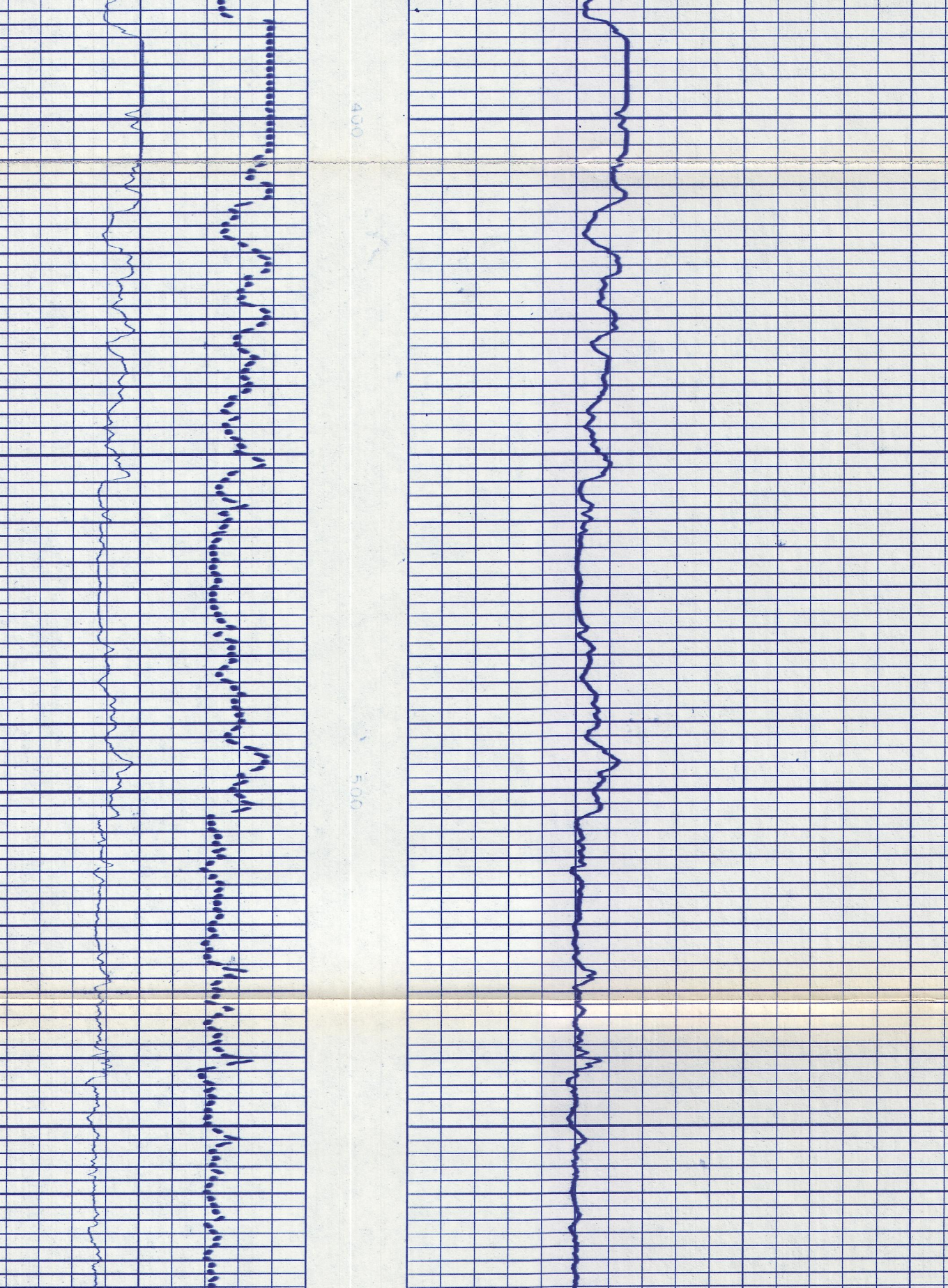
REMARKS		Equipment Used	
		Series No. 1905	
		Run No. ONE	
		S.O. 81530	
		Tool No. 32422	
		Elec. No. 32422	
		Panel No. 1	

Equipment Data		Scale Changes	
Run No. ONE	Tool Type 1905	Type Log	Depth
	Tool Position	Scale Up Hole	Scale Down Hole
	Other		



Company	CER CORPORATION/ERDA	Drillers T.D.	604
Well	CGEH #1	Log F.R.	580
Field	COSO SPRINGS	Log T.D.	582
County	INYO	Elevations:	
State	CALIFORNIA	K.B. 4361	D.F. G.L. 4340

REPEAT SECTION



Division of Dresser Industries, Inc.