



6103108-1514103

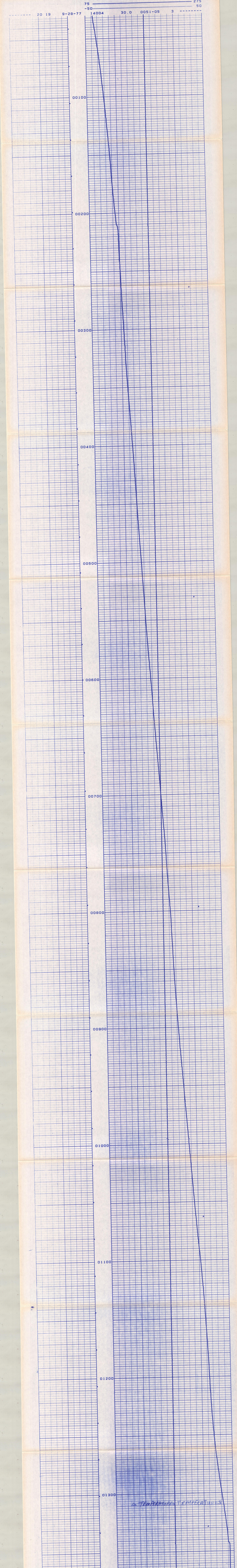
TEMPERATURE LOG

COMPANY: CER CORPORATION/ERDA  
 WELL: C32H # 1  
 FIELD: CHIYA LAKE  
 COUNTY: INYO STATE CALIFORNIA  
 Location: Other Services: CML/3R

Permanent Datum: G.L.  
 Log Measured From: K.F.  
 Starting Measured From: K.F.  
 Sec. 6 Temp. 22.5 Rgr. 31.5  
 Elev. 4359.5  
 Elev. D.F. 437.9  
 G.L. 4735.5

Date: 9-28-77  
 Run No.: 00305  
 Depth - Collar: 1352  
 Depth - Logger: 1374  
 Bottom Logged Interval: 1370  
 Top Logged Interval: KATBER  
 Section: P.M. CI  
 Density: FTLL  
 Level: 253 WTI  
 Max rec. temp., deg F: 253 WTI  
 Rec'd by: W.L. FROB  
 Witnessed by: W.L. FROB

Core Hole Record: From 9.5 To 25  
 Size: 3.5  
 Wgt: 0  
 Conting Record: From 1374 To



TEMPERATURE TEMPERATURES