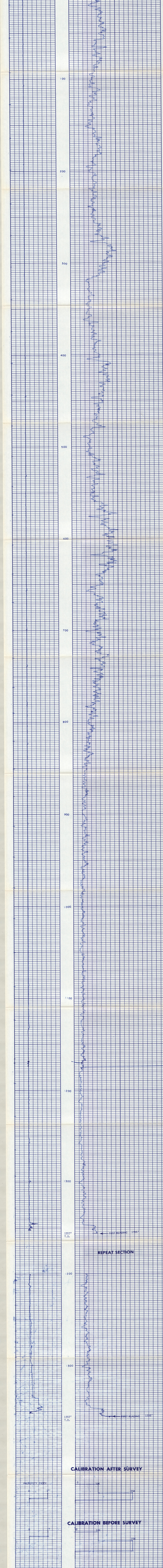
 <b>BIRDWELL</b> 613-0108-2374 103 NUCLEAR CEMENT TOP LOCATOR	
COMPANY	GER CORPORATION
WELL	CGEH # 1
FIELD	COSO HOT SPRINGS
COUNTY	INYO
LOCATION	STATE CALIFORNIA
DATE	28 SEPT. 1977
PERMANENT DATUM	SEC. 6 TWP. 22-S. RGE. 39-E
LOG MEASURED FROM	G.L. ELEV. 4379.5'
DRILLING MEASURED FROM	FT. ABOVE FORM. DATUM ELEV. 4378.5'
OTHER SERVICES	BRND

GAMMA GAMMA		GENERAL	
RUN NO.	1	TRUCK NO.	2932
SONDE MODEL NO.	LACH-5001	SERVICE ORDER/INVNO	513898
SONDE SERIAL NO.	13	SPACING	10.5"
DIAMETER	3 5/8"		
SOURCE TYPE	CS 137		

LOGGING DATA		CEMENTING DATA	
RUN NO.	DEPTHS FROM TO	TYPE SLURRY	VOLUME CU. FT.

REMARKS:  
 STARTED JOB @ 2130 HOURS  
 FINISHED JOB @ 2330 HOURS



CALIBRATION DATA			
COMPANY	GER CORP.	DRILLER	T.D. 1357' (K.B.)
WELL	CGEH # 1	BIRDWELL	T.D. 1357' (G.L.)
FIELD	COSO HOT SPRINGS		F.R. 1350'
LOCATION	6 22-S 39-E	ELEV.	K.B. 4379.5'
COUNTY	INYO		D.F. 4278.5'
STATE	CALIFORNIA	DATE	28 SEPT. 1977
			G.L. 4358.5'