

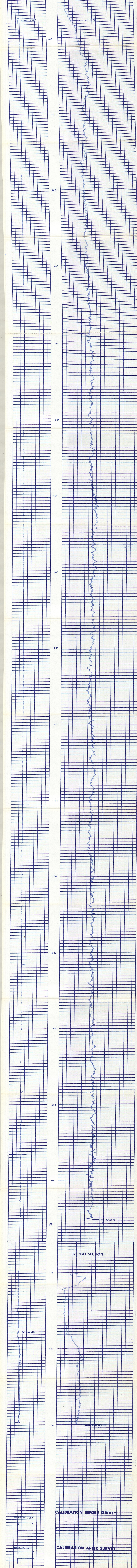
64370726-19
NCT
NUCLEAR CEMENT TOP LOCATOR

COMPANY CER CORPORATION
WELL C GEH # 1
FIELD COSO HOT SPRINGS
COUNTY INYO
LOCATION STATE OIL FIELD
DATE 22 NOV 1977
TIME LOG 1558
DRILLER T.D. 4895
DENSITY 1.22
SENS. SETTINGS 40X10²
COUNTS PER MIN. PER LOG DIV. 1K
STAGE 1
TRUCK NO. 2831
SERVICE ORDER/INV. NO. 520926

EQUIPMENT DATA				GENERAL			
RUN NO.	GAMMA GAMMA	TRUCK NO.	2831	DEPTH	0'	STAGE	1
SONDE SERIAL NO.	LAGH-6001	SERVICE ORDER/INV. NO.	520926	FROM	0'	TYPE	SLURRY
DIAMETER	3 5/8"			TO	0'	VOLUME	CL. FT.
SOURCE TYPE	CS 137 1304 SN 366					CF	17

LOGGING DATA				CEMENTING DATA			
DEPTH	SPEED	T.C.	SENS. SETTINGS	ZERO DIV L	COUNTS PER MIN. PER LOG DIV.	STAGE	TYPE
FROM	PT./MIN.	SEC.					SLURRY
TO							VOLUME
							CL. FT.
							CF
							17

REMARKS: BRIDGE IN HOLE
STARTED JOB @ 1800 HOURS
FINISHED JOB @ 2000 HOURS



CALIBRATION DATA

COMPANY	CER CORPORATION	DRILLER	T.D. 4895
WELL	C GEH # 1	BIRDWELL	T.D. 1652'
FIELD	COSO HOT SPRINGS	BIRDWELL	F.R. 1551'
LOCATION	S 22-S 39-E	ELEV.	K.B. 4379.5'
COUNTY	INYO	D.F.	4378.5'
STATE	CALIFORNIA	G.L.	4358.5'
DATE	22 NOVEMBER 1977		