

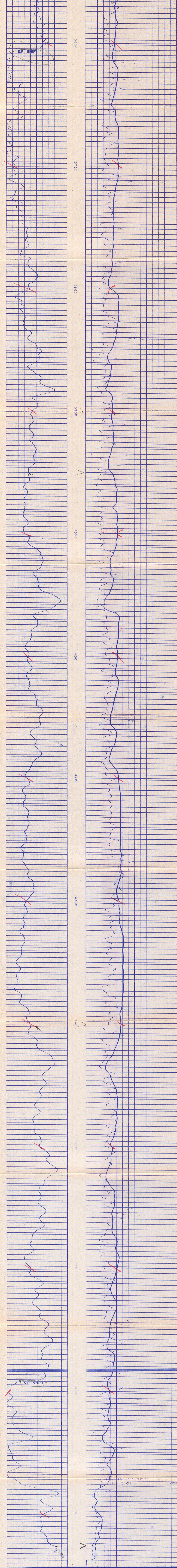


**Induction  
 Electrode**

WELL: COBO SPRINGS #1  
 COUNTY: INYO  
 STATE: CALIFORNIA  
 COMPANY: C. E. R. CORPORATION/ERDA  
 FIELD: COBO SPRINGS #1  
 DATE: 5-11-78  
 TIME: 10:00  
 OPERATOR: [blank]  
 SURVEYOR: [blank]

Series No.	810
Run No.	008
R.O.	85287
Tooling No.	38166
Enc. No.	38166
Panel No.	28017

SPONTANEOUS POTENTIAL	DEPTH	RESISTIVITY	CONDUCTIVITY
Millivolts		Ohms m <sup>2</sup> /m	Millimos/m
		16" NORMAL	INDUCTION CONDUCTIVITY 40" SPACING
		INDUCTION RESISTIVITY 40" SPACING	

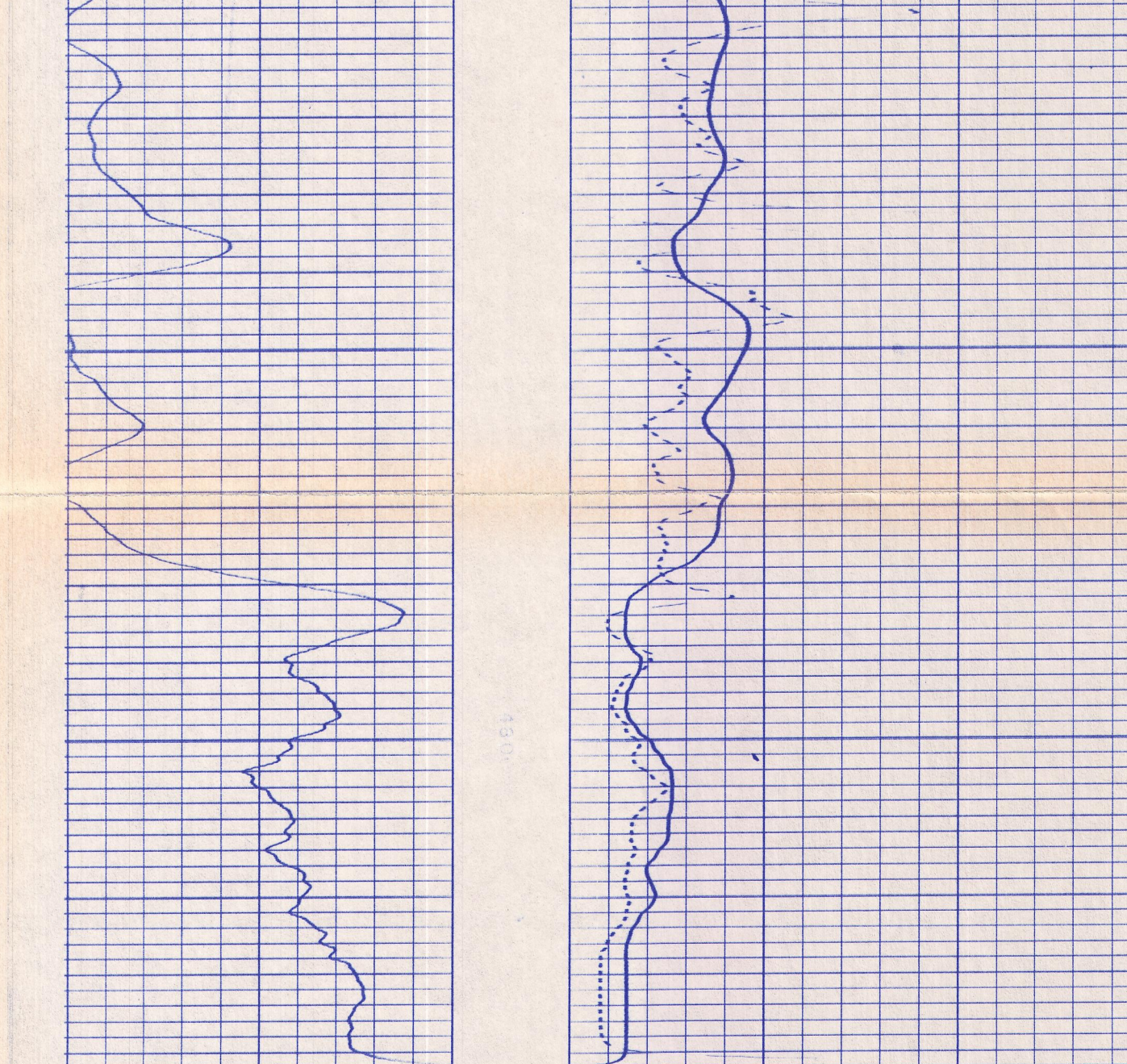


SPONTANEOUS POTENTIAL	DEPTH	RESISTIVITY	CONDUCTIVITY
Millivolts		Ohms m <sup>2</sup> /m	Millimos/m
		16" NORMAL	INDUCTION CONDUCTIVITY 40" SPACING
		INDUCTION RESISTIVITY 40" SPACING	

Company: C. E. R. CORPORATION/ERDA  
 Well: COBO SPRINGS #1  
 Field: COBO SPRINGS  
 County: INYO  
 State: CALIFORNIA

Drillers T.D.: 4824  
 Log F.R.: 4826  
 Log T.D.: 4830  
 Elevations: K.B. - D.F. - G.L. 4368.5

**REPEAT SECTION**

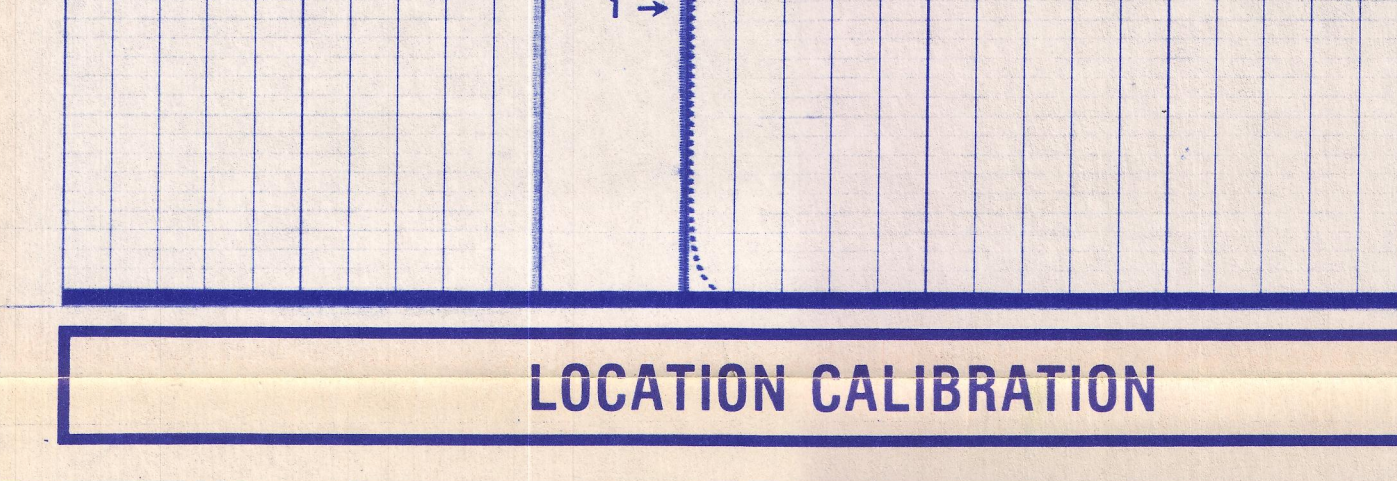
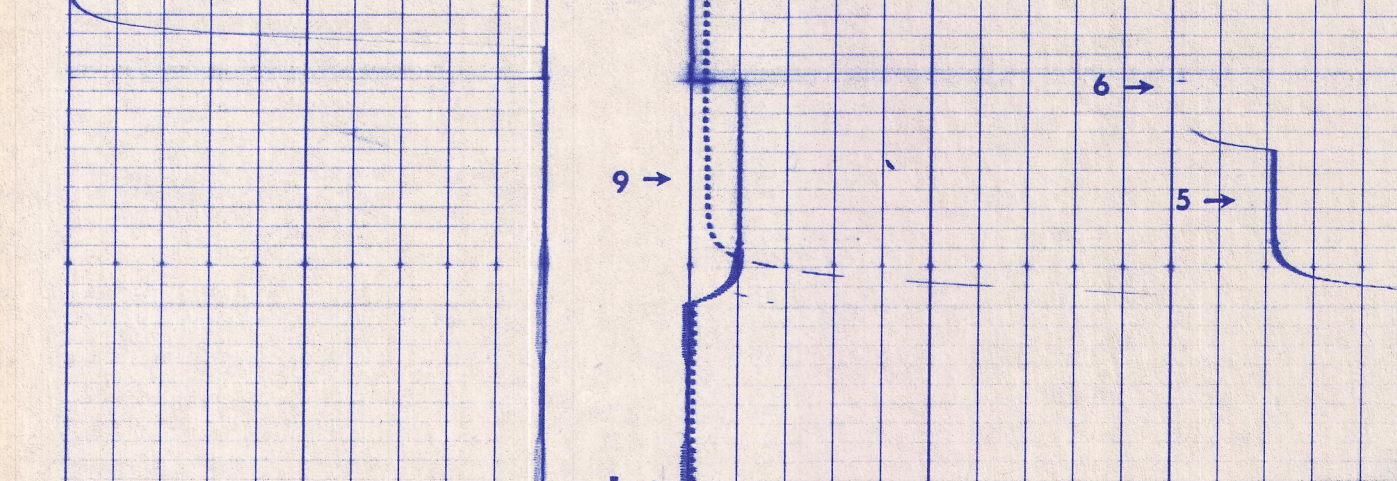


**CALIBRATION**

**INSTRUMENT CALIBRATION CODE**

- |                             |                     |
|-----------------------------|---------------------|
| INDUCTION - ELECTROLOG      | G.I.P. or NEUTRON   |
| 1. MECHANICAL ZERO          | 12. ELECTRICAL ZERO |
| 2. LOW STANDARD             | 13. CRM CALIBRATE   |
| 3. HIGH STANDARD            | 14. LOW STANDARD    |
| 4. HIGH STANDARD I/D & SEC  | 15. HIGH STANDARD   |
| 5. HIGH REFERENCE           |                     |
| 6. HIGH REFERENCE I/D & SEC | CALIPER             |
| 7. LOW REFERENCE            |                     |
| 8. LOW REFERENCE I/D 10/CD  | 17. LOW STANDARD    |
| 9. HIGH STANDARD            | 18. HIGH STANDARD   |
| 10. HIGH STANDARD SP        |                     |

\*DOWN HOLE CALIBRATION STEPS



**LOCATION CALIBRATION**

