



FILE NO. 2" = 100'

COMPANY: C.E.R. CORPORATION/ERDA  
 WELL: COSO SPRINGS #1  
 FIELD: COSO SPRINGS  
 COUNTY: INYO  
 STATE: CALIFORNIA

LOCATION: N/A  
 DATE: 11-06-77  
 TIME: 6:00 AM  
 DEPTH: 22.5  
 RIG: 39 E  
 LOGGING: G.L. 4358.5  
 DRILLING: 0  
 EQUIPMENT: 815

PERMITS: DL 110-76-77  
 LOGGING: 4022  
 DRILLING: 4022  
 EQUIPMENT: 4017  
 TOOLS: 9.5/8 @ 1568  
 CEMENT: 316  
 BIT SIZE: 8 3/4  
 LOGGING: 8 3/4  
 DRILLING: 8 3/4  
 EQUIPMENT: 8 3/4

DENSITY AND VISCOSITY: 6.6 @ 39  
 pH AND FLUID LOSS: 10.0 @ 11.2 cc  
 SOURCE OF SAMPLE: F.L.M. LINE  
 Rm @ Meas. Temp: 2.5 @ 7.5  
 Rm @ Meas. Temp: 2.2 @ 7.2  
 Rm @ Meas. Temp: 1.3 @ 2.7  
 Rm @ BHT: 2.5 @ 7.5  
 Rm @ BHT: 2.2 @ 7.2  
 Rm @ BHT: 1.3 @ 2.7  
 MUD: H.E. 106 BAK  
 MUD: H.E. 106 BAK  
 MUD: H.E. 106 BAK

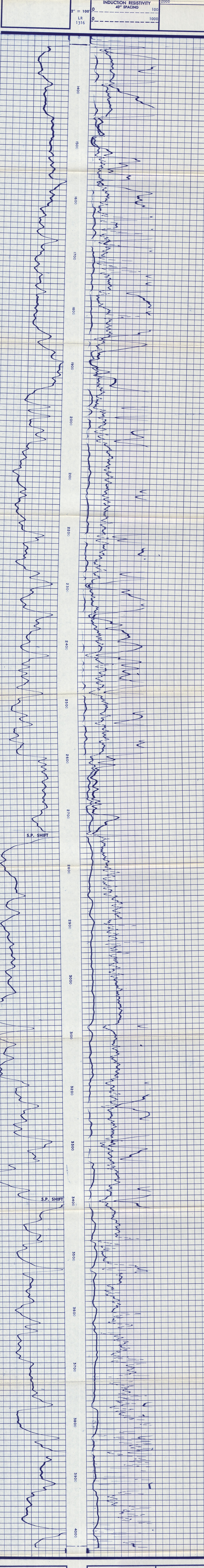
REMARKS: (1) BHT DIFFERS FROM TEMPERATURE PROBE MEASUREMENT. (200 VS. 275)  
 (2) LOG DEPTH RESET TO DRILLER DEPTH & NOT CORRECTED FOR MEASUREMENT ERROR  
 (3) NO REPEAT AT CUSTOMERS REQUEST

Equipment Used: Series No. 815, Run No. 81706, S.O. 38166, Tool No. 38166, Elec. No. 32708, Panel No. 32708

Changes in Mud Type or Additional Samples: Date, Sample No., Type Log, Depth, Scale Up Hole, Scale Down Hole

Dens, Visc, pH, Fluid Loss, Source of Sample, Rm @ Meas. Temp, Rm @ Meas. Temp, Rm @ Meas. Temp, Source Rm/ Rmc, Rm @ BHT, Rm @ BHT, Rm @ BHT

SPONTANEOUS POTENTIAL Millivolts	DEPTH	RESISTIVITY Ohms m <sup>2</sup> /m	CONDUCTIVITY Millimhos/m
	0	1000	0
	0	1000	1000
	2" LR	1316	



SPONTANEOUS POTENTIAL Millivolts	DEPTH	RESISTIVITY Ohms m <sup>2</sup> /m	CONDUCTIVITY Millimhos/m
	0	1000	0
	0	1000	1000
	2" LR	1316	

Company: C.E.R. CORPORATION/ERDA  
 Well: COSO SPRINGS #1  
 Field: COSO SPRINGS  
 County: INYO  
 State: CALIFORNIA

Drillers T.D.: 4022  
 Log F.R.: 4017  
 Log T.D.: 4022  
 Elevations: K.B. 4378.5 D.F. G.L. 4358.5

