

COMPANY CER CORP / ERDA
WELL C.G.E. #1
FIELD COSO
COUNTY INYO STATE CALIF

SR# 6 TWY 3.25 RGE 35E
G.L. 2.1 Ft Above Permanent Datum
Log Measured from 11.0
Datum Measured from 11.0

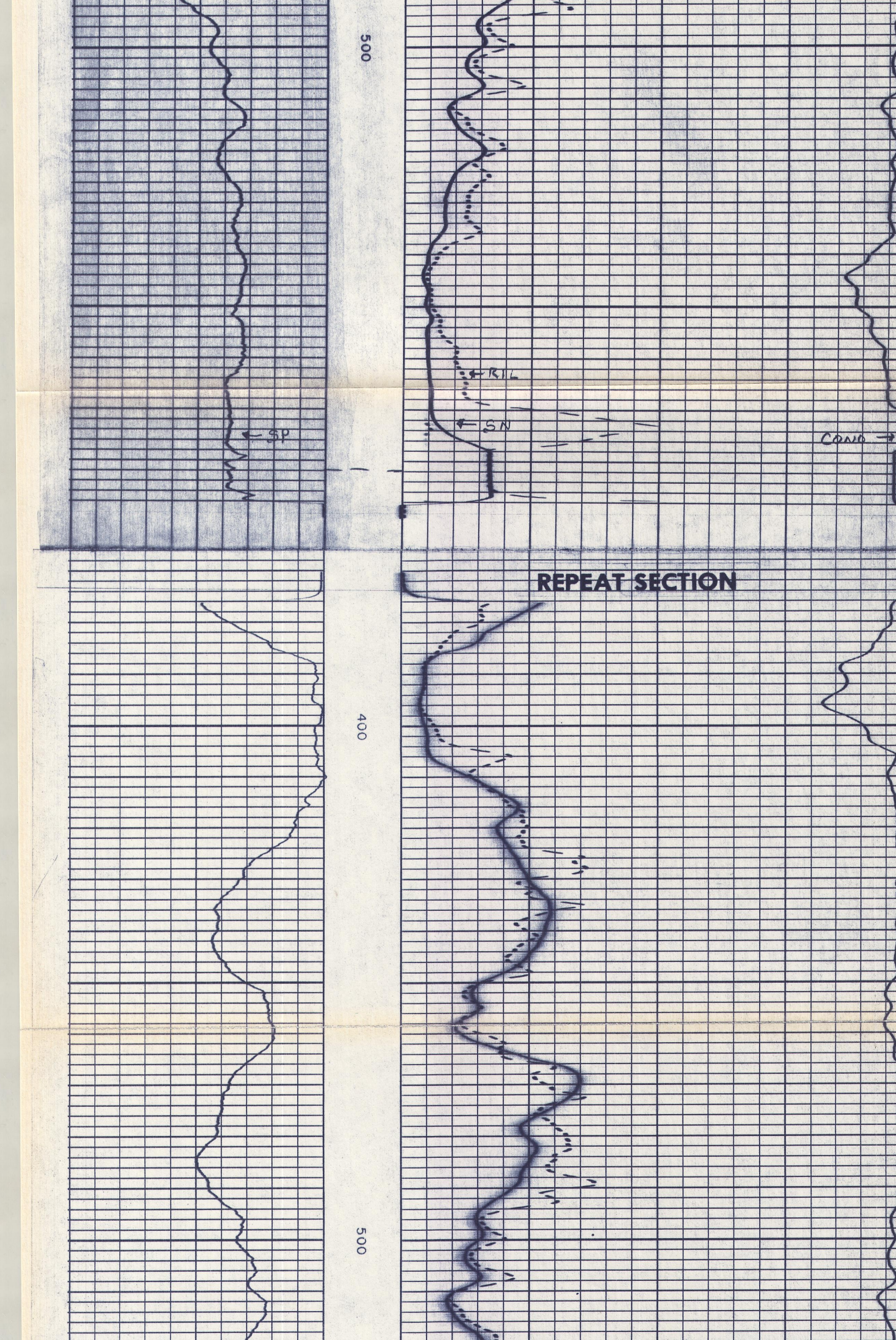
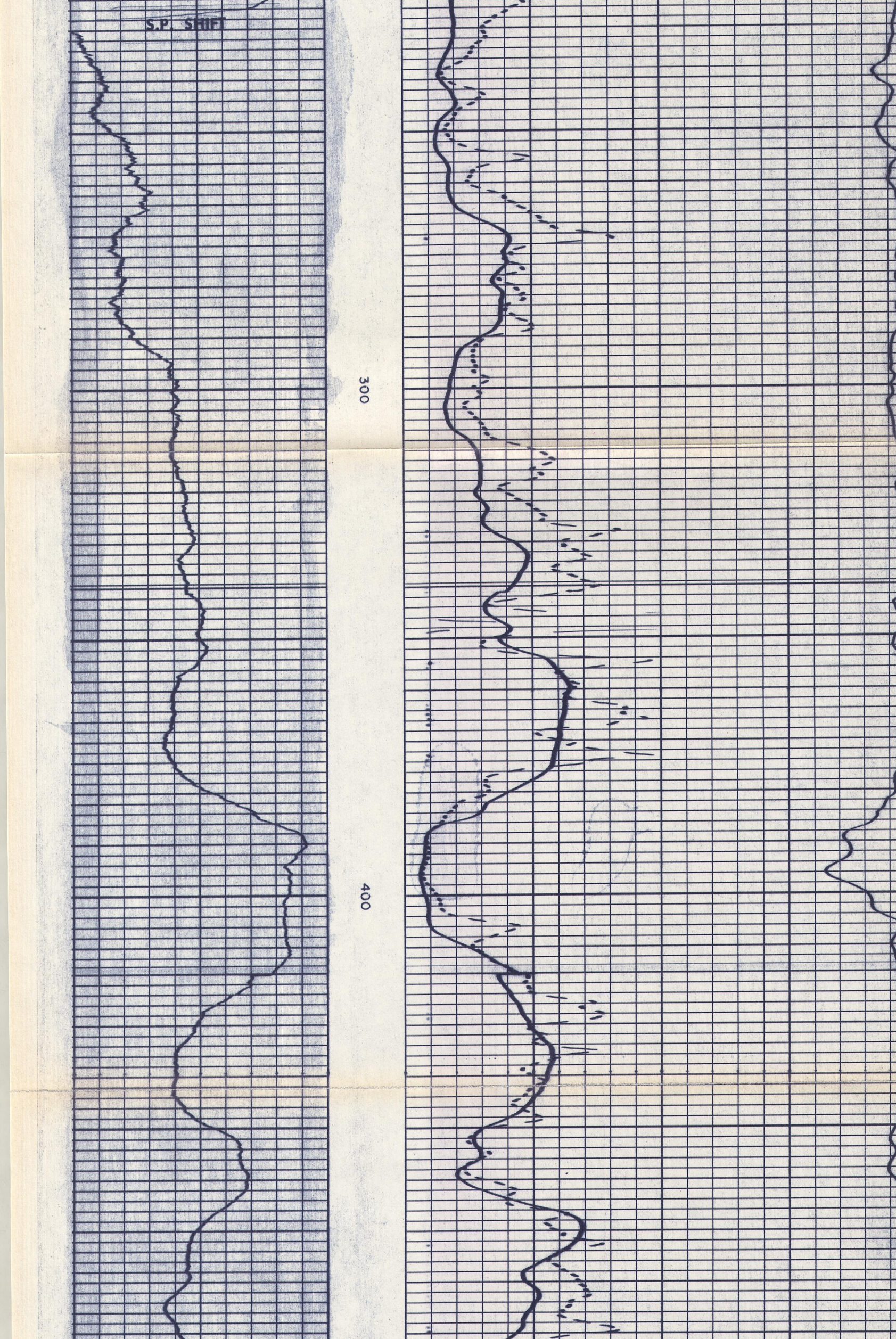
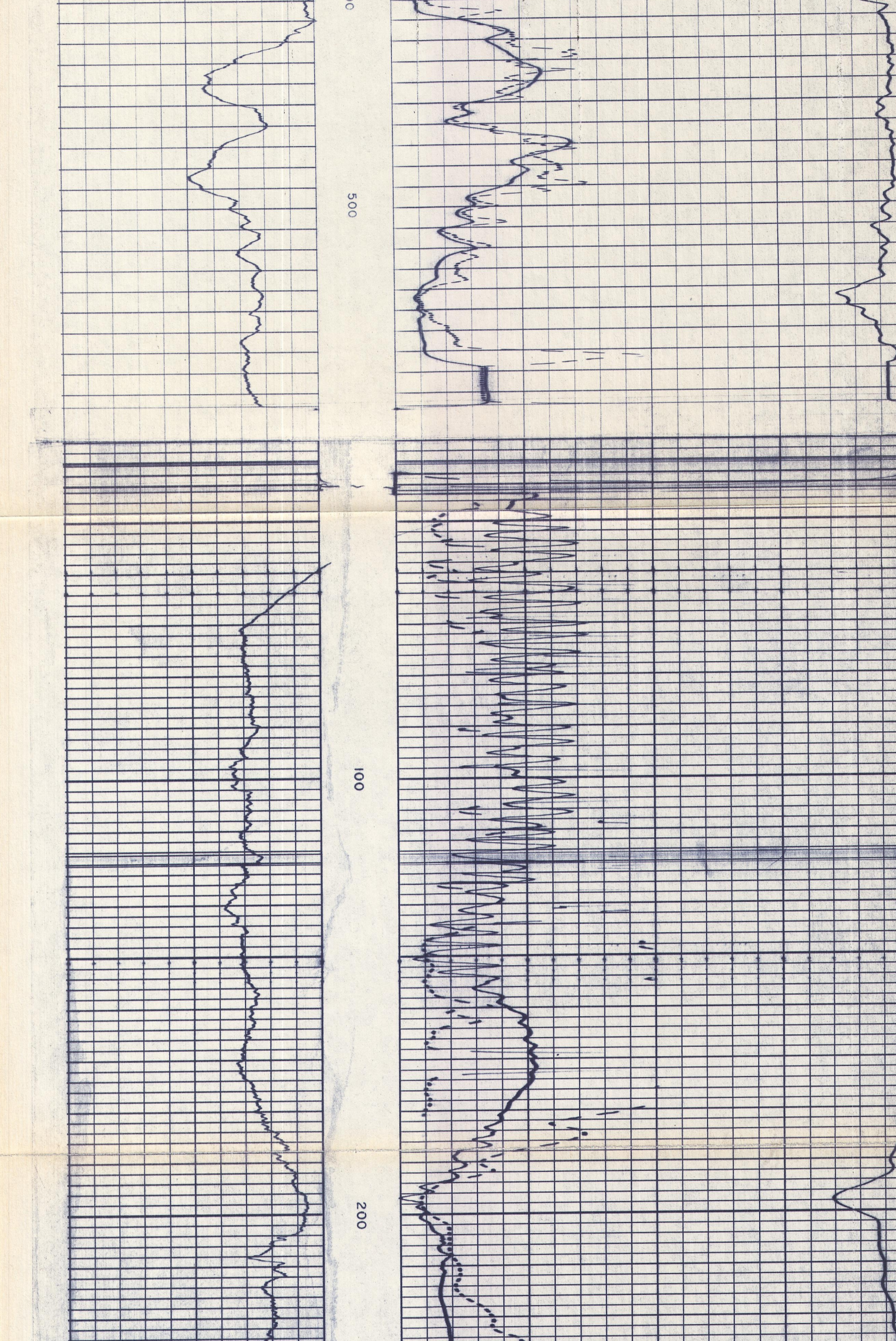
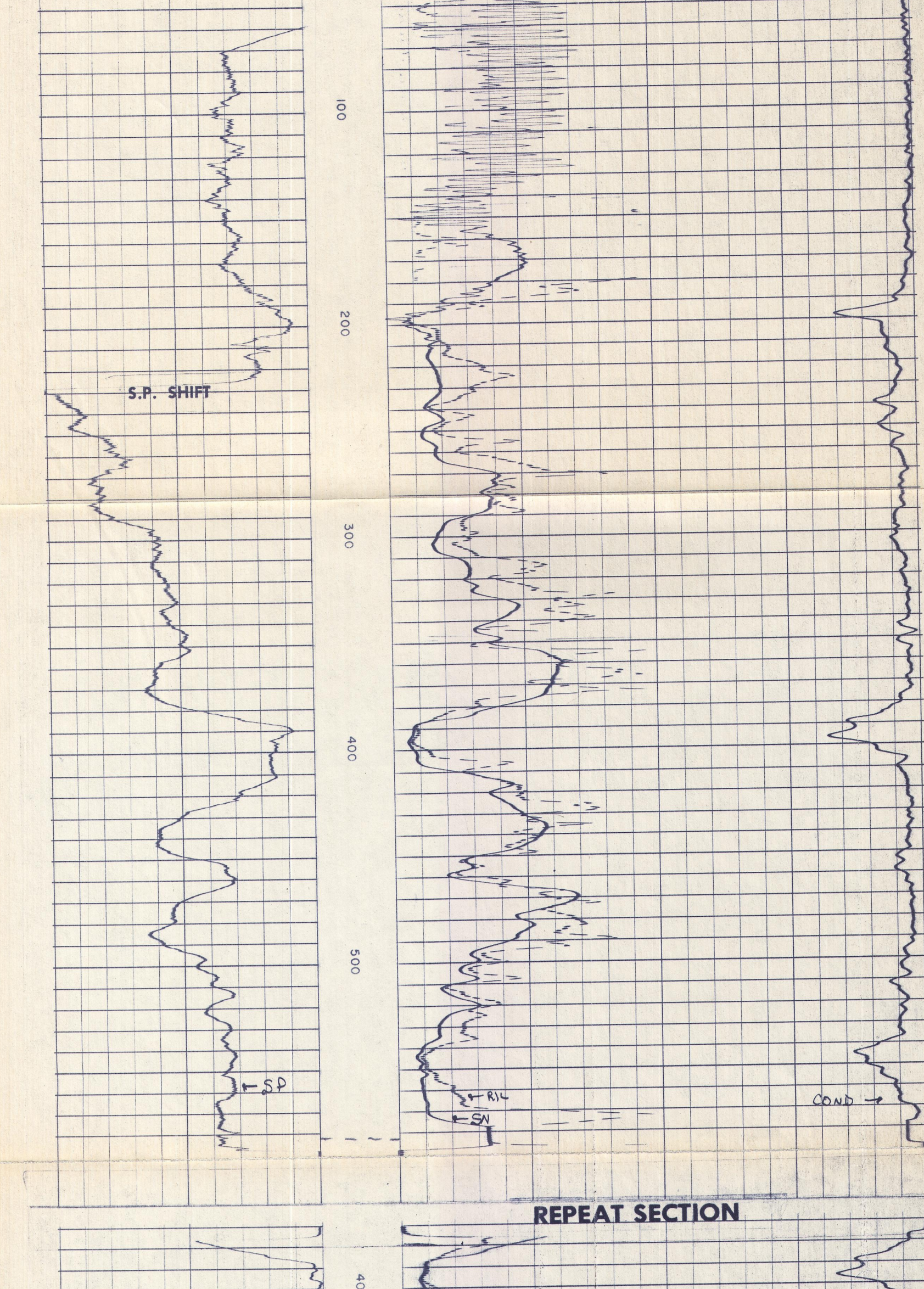
Date 7-19-71
Run No. 528
Cable 528
Bottom Logged Interval 200-23.5-528
Cable - Topper 17.2
Cable - Bottom 5.3

200 (logged interval)
Cable - Topper 17.2
Cable - Bottom 5.3

SPONTANEOUS POTENTIAL Millivolts
RESISTIVITY Ohms m²/m
CONDUCTIVITY Millimhos/m
INDUCTION CONDUCTIVITY 40" SPACING
INDUCTION RESISTIVITY 40" SPACING

| Equipment Used | | | | |
|---|-------------------|--------------------|-----------------|-----------|
| Series No. | 807 | Run No. | 528 | Tool No. |
| Tool No. | 31063 | Elec. No. | 31063 | Panel No. |
| Scale Changes | | | | |
| Type Log | Depth | Scale Up Hole | Scale Down Hole | |
| Changes in Mud Type or Additional Samples | | | | |
| Date | Sample No. | Type Fluid in Hole | | |
| Dens. Visc. pH Fluid Loss | | | | |
| Source of Sample | | | | |
| Rm @ Mess. Temp. | Rmf @ Mess. Temp. | Rmc @ Mess. Temp. | Source Rmf Rmc | Rm @ BHT |
| Rmf @ BHT | Rmc @ BHT | | | |

| SPONTANEOUS POTENTIAL | DEPTH | RESISTIVITY | CONDUCTIVITY |
|-----------------------|-------|------------------------|------------------------------------|
| Millivolts | | Ohms m ² /m | Millimhos/m |
| | | 16" NORMAL | INDUCTION CONDUCTIVITY 40" SPACING |
| | 0 | 100 | 0 |
| | 0 | 1000 | 500 |
| | 0 | 10000 | 5000 |
| | 0 | 100000 | 50000 |



CALIBRATION - AFTER SURVEY
TO 10.0 M SM CAL
INTERNAL CAL
SEC OFF

CALIBRATION - BEFORE SURVEY
TO 10.0 M SM CAL
INTERNAL CAL
SEC OFF

SURFACE CALIBRATION
TO 10.0 M SM CAL
INTERNAL CAL
SEC OFF

TOOL NO. 31063
USOBAL
DATE: 7-16-71