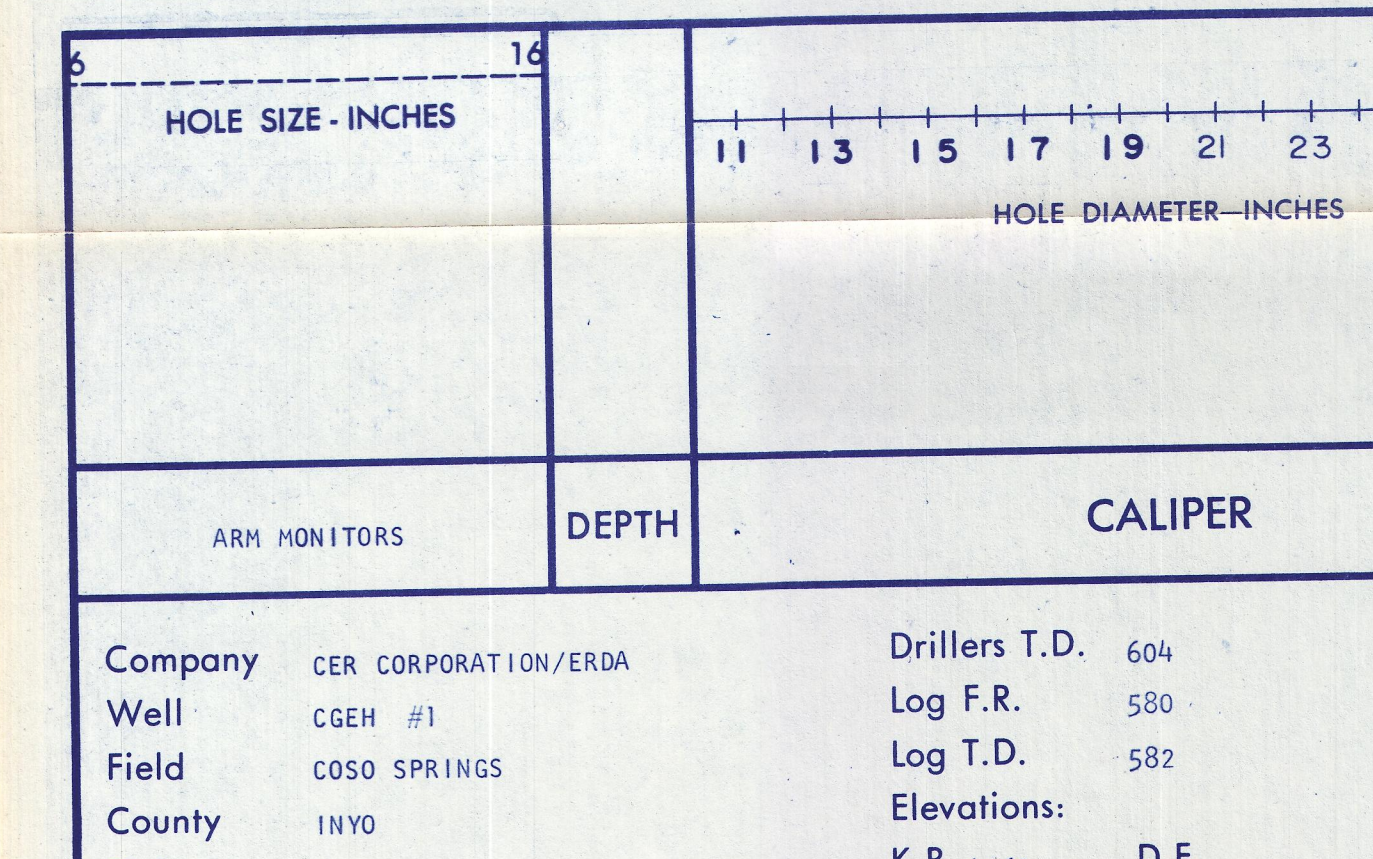
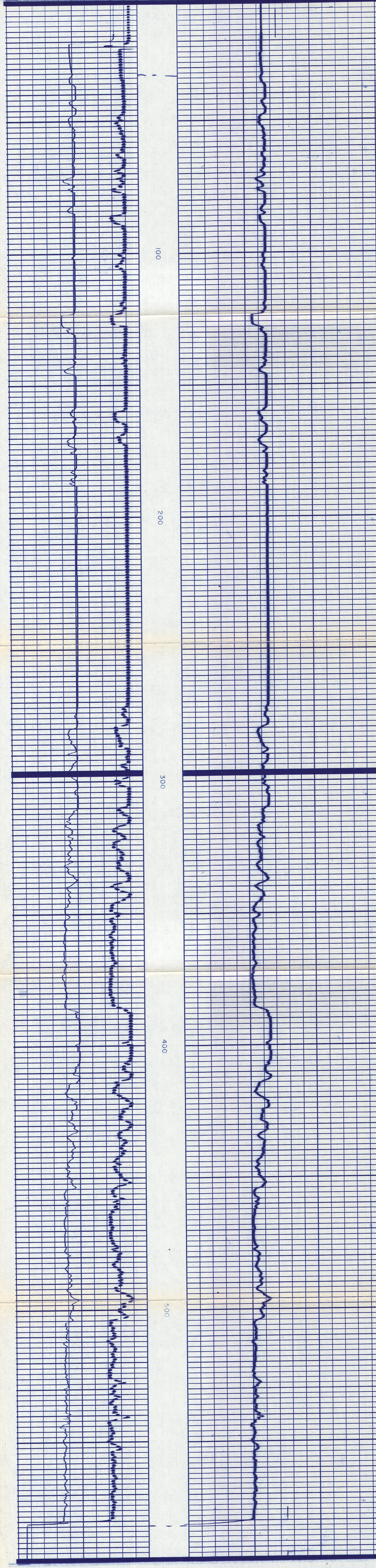
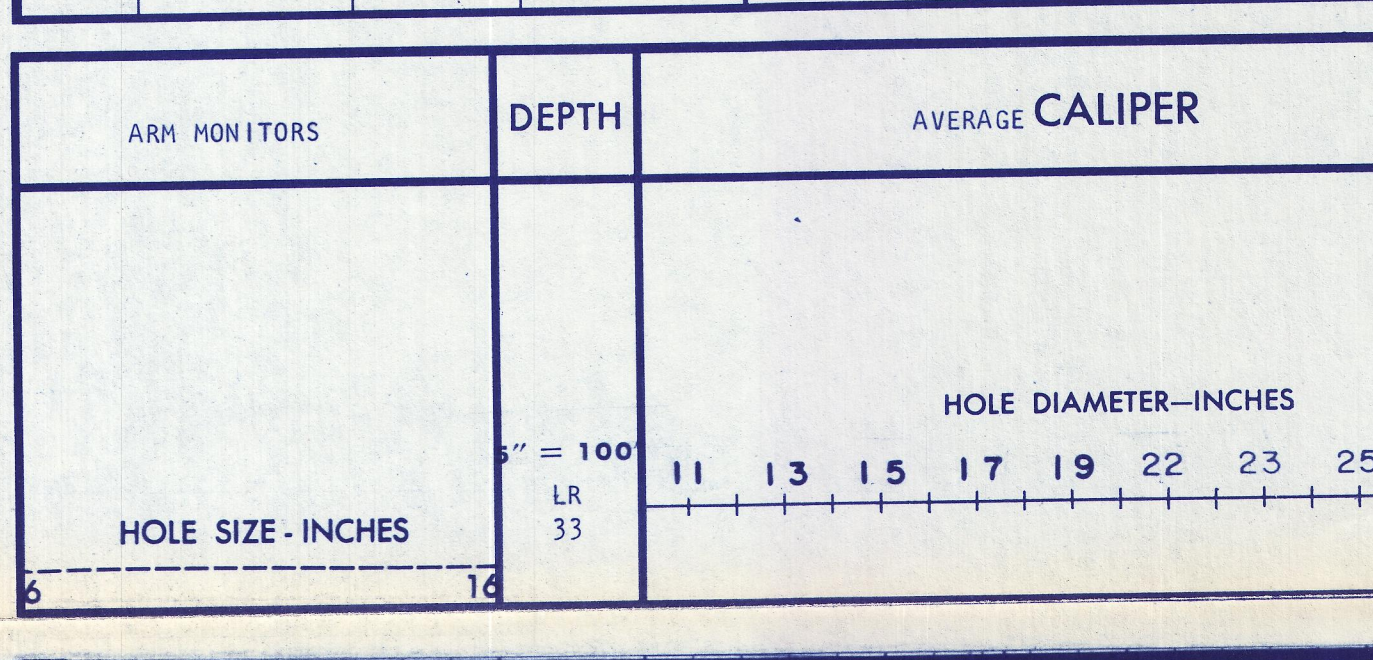




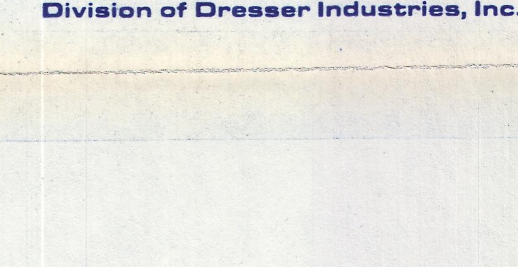
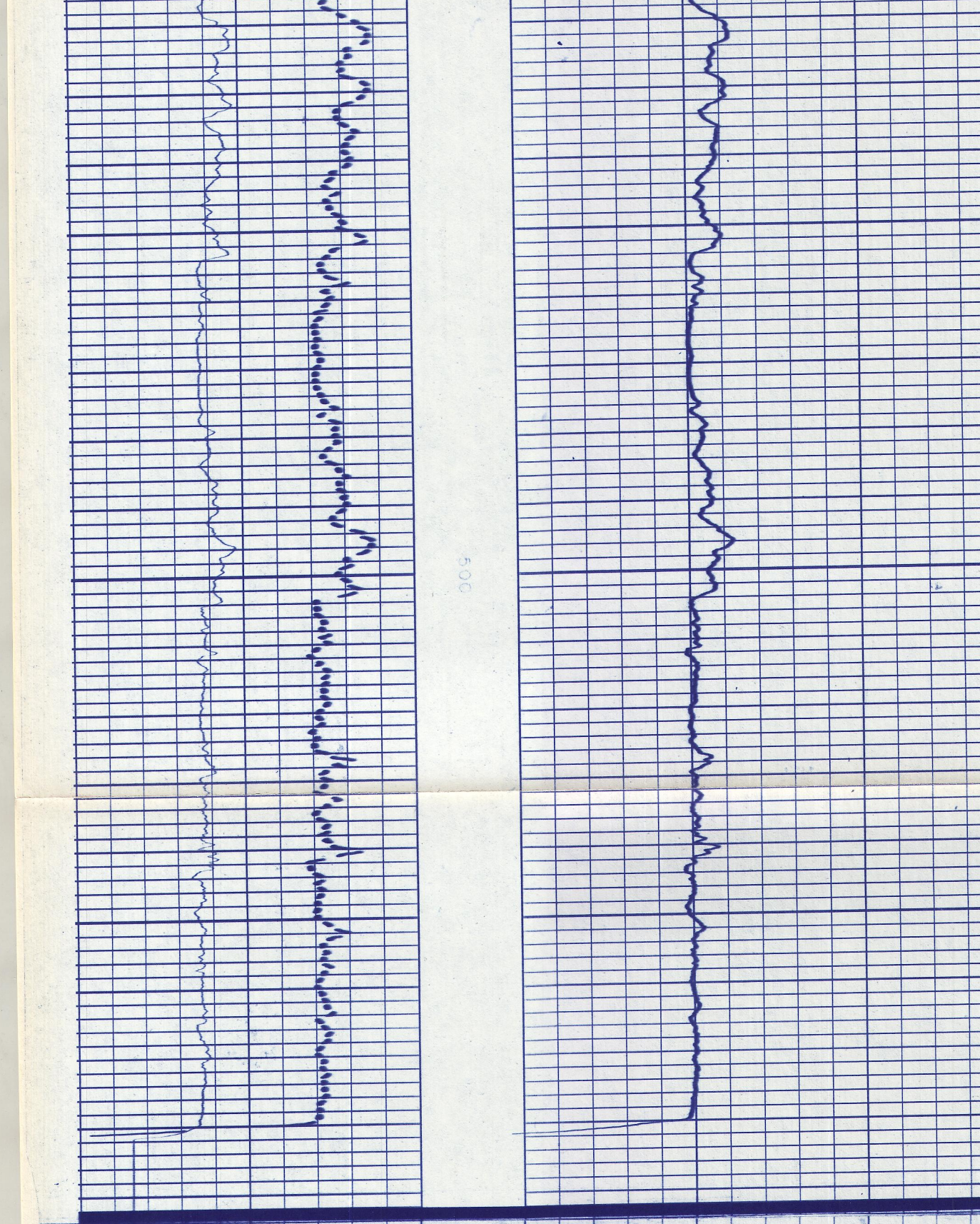
FILE NO.	5" = 100'	COMPANY	CER CORPORATION/ERDA
WELL	CGEH #1	FIELD	COSO SPRINGS
COUNTY	INYO	STATE	CALIFORNIA
LOCATION	N/A	Other Services	
SEC	6	TWP	22 S
RGE	39 E	Elev.	4340
Log Measured from	KB 4340	Eq. No.	4340
Drilling Measured from	KB 4340	Eq. No.	4340
Date	9-19-77	Driller	ONE
Run No.	ONE	Depth-Logger	ONE
Depth-Logger	ONE	Depth-Logger Interval	330
Log Logged Interval	330	Log Logged Interval	330
Change-Logger	3.3 @ 5.5	Change-Logger	3.3 @ 5.5
Bit Size	1 7/8	Bit Size	1 7/8
Type Fluid in Hole	SEI	Type Fluid in Hole	SEI
Density and Viscosity		Density and Viscosity	
pH and Fluid Loss		pH and Fluid Loss	
Source of Sample	F.O.L. IN 2	Source of Sample	F.O.L. IN 2
Form @ Mass Temp.	5.31 @ 72	Form @ Mass Temp.	5.31 @ 72
Form @ Mass Temp.	5.37 @ 72	Form @ Mass Temp.	5.37 @ 72
Source of Fluid and Time	5.31 @ 72	Source of Fluid and Time	5.31 @ 72
Form @ BHT	2.58 @ 120	Form @ BHT	2.58 @ 120
Time Since Circ.		Time Since Circ.	
Max. Sec. Temp. (Deg. F.)	120	Max. Sec. Temp. (Deg. F.)	120
HL (D) (D) BAK.		HL (D) (D) BAK.	
HL INDS		HL INDS	
Witnessed By	HR-APPL EDORN	Witnessed By	HR-APPL EDORN

REMARKS		Equipment Used	
		Series No.	1905
		Run No.	ONE
		S.O.	81530
		Tool No.	32422
		Elec. No.	32422
		Panel No.	1
		Scale Changes	
		Type Log	Depth
		Scale Up Hole	Scale Down Hole
		Equipment Data	
Run No.	Tool Type	Tool Position	Other
ONE	1905		



Company	CER CORPORATION/ERDA	Drillers T.D.	604
Well	CGEH #1	Log F.R.	580
Field	COSO SPRINGS	Log T.D.	582
County	INYO	Elevations:	
State	CALIFORNIA	K.B.	4361
		D.F.	
		G.L.	4340

REPEAT SECTION



Division of Dresser Industries, Inc.