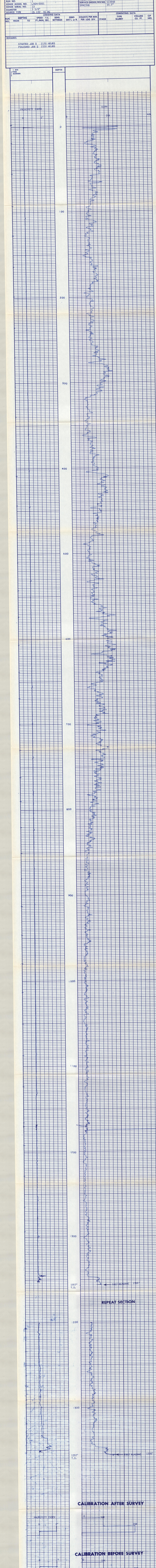


COMPANY	GER CORPORATION
WELL	CGER # 1
FIELD	CGSO HOT SPRINGS
COUNTY	INYO
LOCATION	22-S 39-E
STATE	CALIFORNIA
OTHER SERVICE	
SEC.	6
TWP.	22-S
RGE.	39-E
BLK.	6
TR.	1
PREMOUNT DATA (SHEET) 15601-0	
ORIGINATOR NAME ROOM	Fr. Above Room Down
DATE	28 SEPT. 1977
DIV. NO.	09E
TYPE OF WELL	1361' (K.B.)
DEPTH - LOGGED	1357' (G.L.)
TOP LOG WIRE	1350'
TYPE FLUID IN HOLE	WATER
DRILLING METHOD	DRILLING
LOGGING TIME	2 HOURS
LOGGING BY	OPEN
RECORDED BY	
LEVEL	
OTHER INFO	
LOGGING	
REMARKS	
RUN NO.	1
SONDE SERIAL NO.	13
DIAMETER	3 5/8"
SOURCE TYPE	CS 137
LOGGING DATA	25 MC
TRUCK NO.	
SERVICE ORDER/INV. NO.	513898
SPACING	10.5"
LOGGING DATA	
COUNTS PER MIN. PER LOG DIV.	
STAGE	
CEMENTING DATA	
TYP. SLURRY	
VOLUME CU. FT.	
CIP HRS.	
REMARKS:	
STARTED JOB @	2130 HOURS
FINISHED JOB @	2330 HOURS



CALIBRATION DATA	
COMPANY	GER CORP.
WELL	CGER # 1
FIELD	CGSO HOT SPRINGS
LOCATION	6 22-S 39-E
COUNTY	INYO
STATE	CALIFORNIA
DATE	28 SEPT. 1977
DRILLER	T.D. 1361' (K.B.)
BIRDWELL	T.D. 1357' (G.L.)
F.R.	1350'
ELEV.	K.B. 4379.5'
D.F.	4278.5'
G.L.	4358.5'

BIRDWELL DIVISION
 Sismograph Service Corporation
 A DIVISION OF BETHLEHEM COMPANY