

6203108-63 of 103



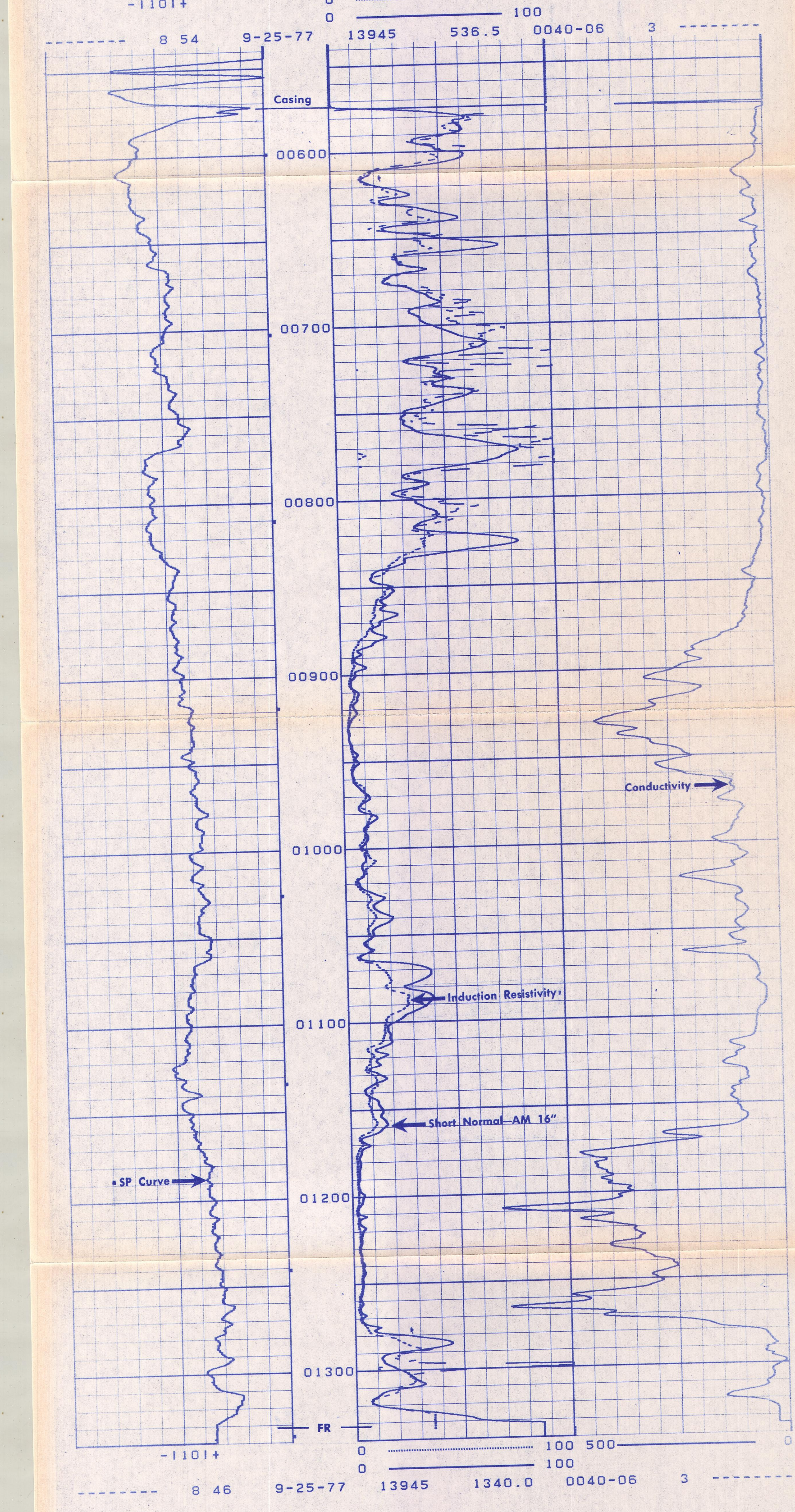
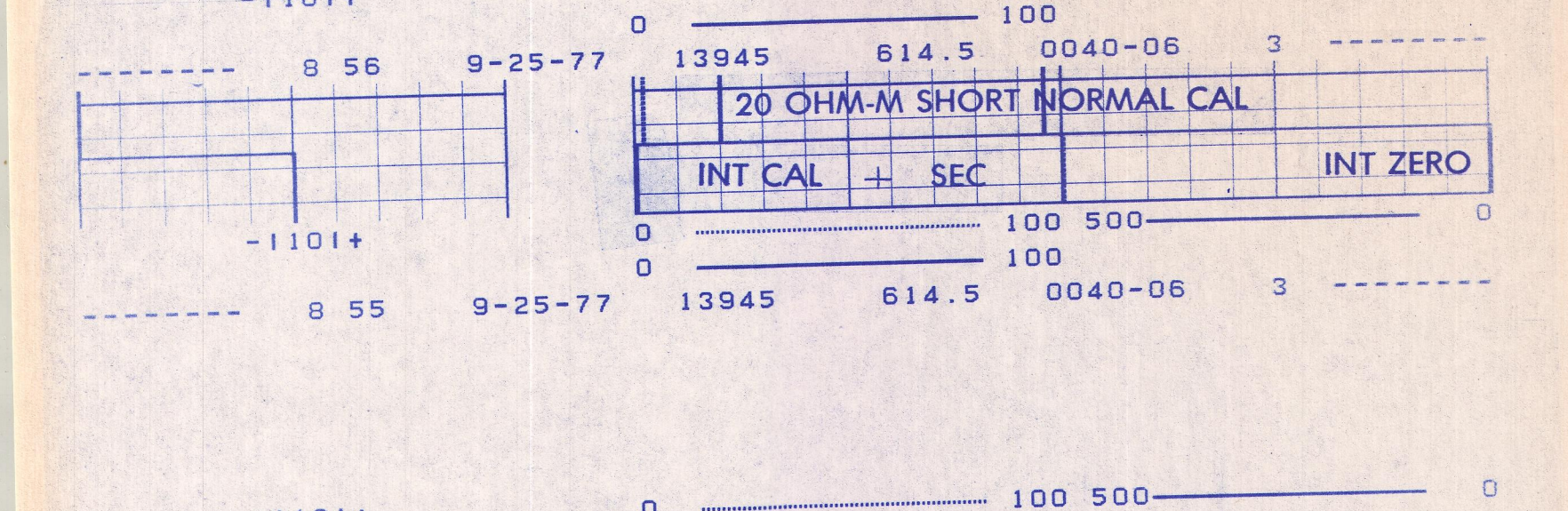
INDUCTION ELECTRICAL LOG

FILING NO. 2
 COMPANY CER CORPORATION / ERDA
 WELL CGEH #1
 FIELD CHINA LAKE NWC
 COUNTY INYO STATE CALIFORNIA
 LOCATION: Other Services: CCL/SNP, TLL, X-Y CALIPPER
 SEC. 6 TWP. 22S RGE. 30E
 Permanent Datum: G.L. Elev. 4358.5
 Log Measured from: G.L. Elev. 4358.5
 Drilling Measured from: K.B. Elev. 4358.5
 Date: 9-25-77
 Run No. 018
 Depth-Driller: 1368
 Depth-Logger: 1368
 Bottom Logged Interval: 1368-1371
 Top Logged Interval: 1371-1374
 Casing-Driller: 1 1/2 5/8 601
 Bit Size: 2 1/4
 Type Fluid in Hole: OIL WATER
 Density and Viscosity: 68 @ 48 cc
 pH and Fluid Loss: 8 cc
 Source of Sample: FLOUILLINE
 Rm @ Meas. Temp.: 3.1 @ 72 *F
 Rmf @ Meas. Temp.: 2.7 @ 72 *F
 Rmc @ Meas. Temp.: 2.5 @ 72 *F
 Source Rmf Rmc: M M
 Rm @ BHT: 1.3 @ 168 *F
 Rmf @ BHT: 1.2 @ 168 *F
 Rmc @ BHT: 1.2 @ 168 *F
 Run Date: 9-25-77
 Max. Res. Temp. Deg. F: 168
 Equip. No. and Location: WALKER-VILIA
 Witnessed By: MR. APPLIEDORN

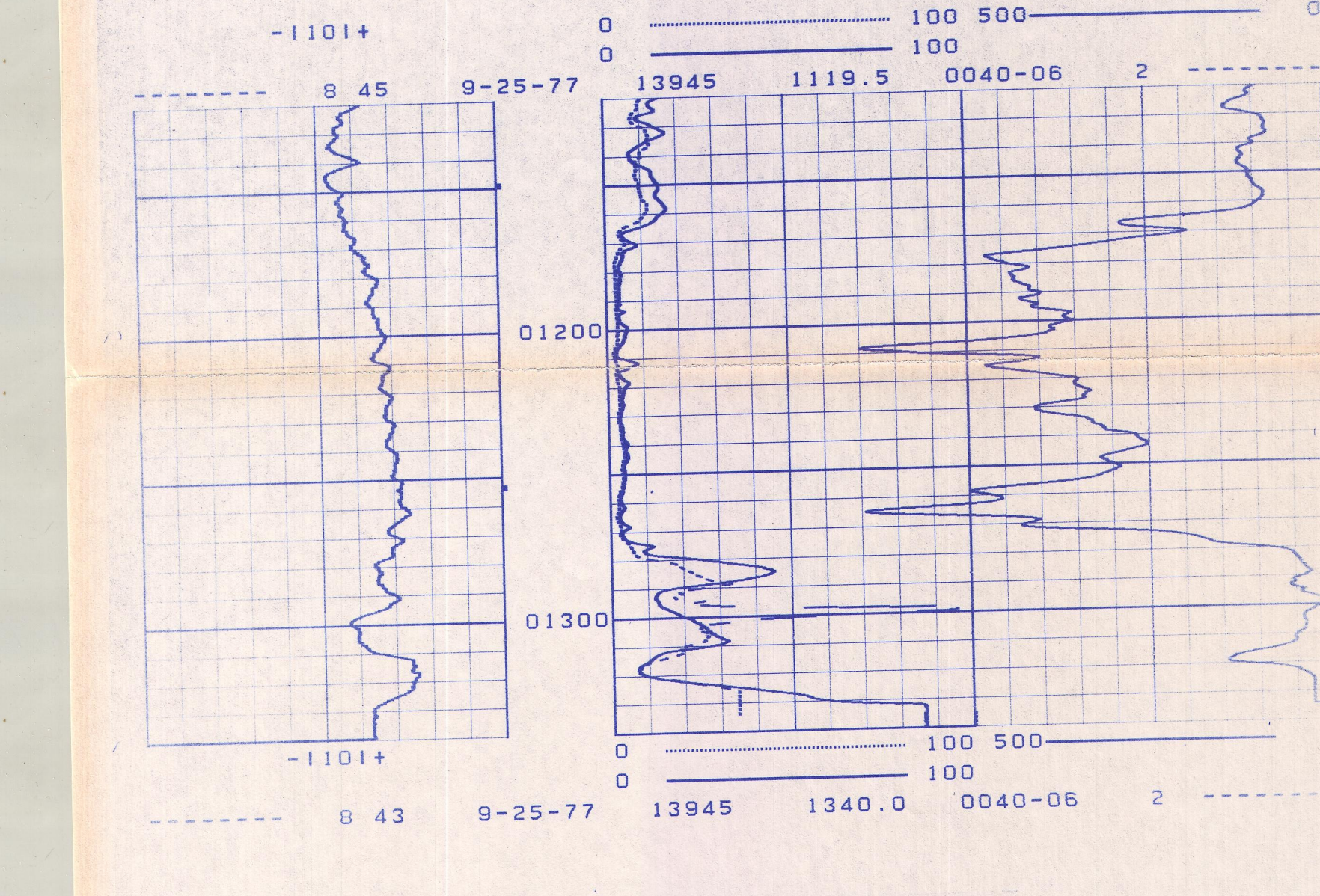
Changes in Mud Type or Additional Samples		Type Log	Depth	Scale Up Hole	Scale Down Hole
Date	Sample No.				
Type Fluid in Hole					
Dens.	Visc.				
pH	Fluid Loss	cc	cc		
Source of Sample					
Rm @ Meas. Temp.	Rmf @ Meas. Temp.	Rmc @ Meas. Temp.	Source Rmf Rmc		
Rm @ BHT	Rmf @ BHT	Rmc @ BHT			

SPONTANEOUS POTENTIAL	DEPTHS	RESISTIVITY	CONDUCTIVITY
millivolts		ohms - m ² /m	1000 millimhos/m = ohms m ² /m
		16" NORMAL AMP. NORMAL	40" INDUCTION
		0 100 1000	0 500 0
		40" INDUCTION	
		0 100 1000	

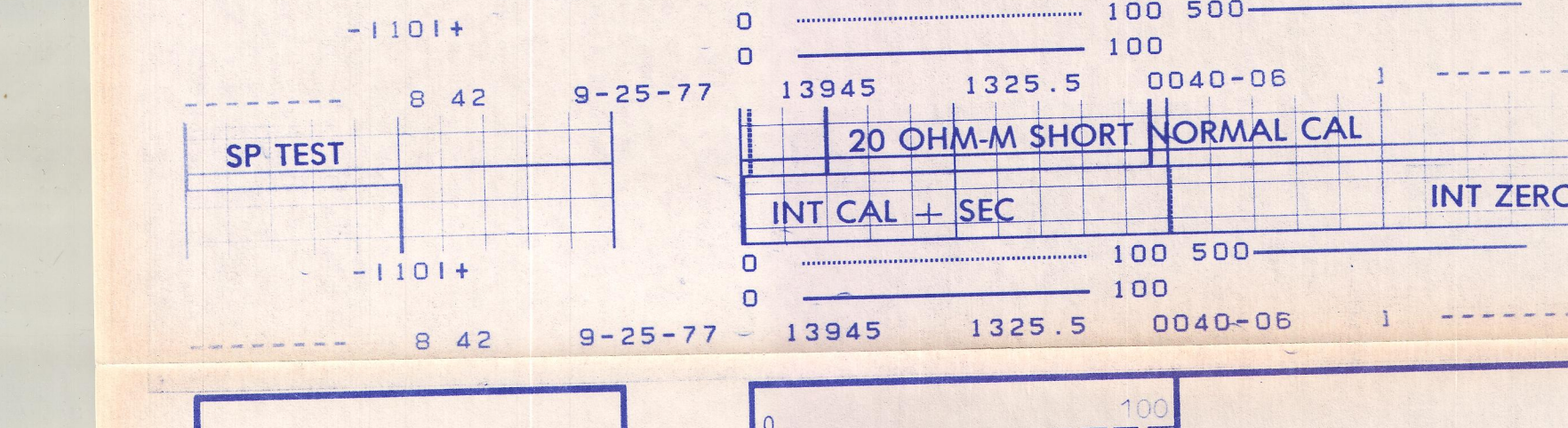
CALIBRATION AFTER SURVEY



REPEAT SECTION



CALIBRATION BEFORE SURVEY



SPONTANEOUS POTENTIAL	DEPTHS	RESISTIVITY	CONDUCTIVITY
millivolts		ohms - m ² /m	1000 millimhos/m = ohms m ² /m
		16" NORMAL AMP. NORMAL	40" INDUCTION
		0 100 1000	0 500 0
		40" INDUCTION	
		0 100 1000	

Company: CER CORPORATION/ERDA
 Well: CGEH #1
 Field: CHINA LAKE NWC
 County: INYO State: CALIFORNIA
 GO FR: 1341
 GO TD: 1342
 DRLR TD: 1368
 Elev.: KB 4379
 DF: 4358.5
 GI: 4358.5