

LOG 3108-66-4108



FILE NO. 2" = 100'

COMPANY C. E. R. CORPORATION/ERDA  
WELL COSO SPRINGS #1  
FIELD COSO SPRINGS  
COUNTY INYO STATE CALIFORNIA  
LOCATION: N/A  
SEC 6 TWP 22 S RGE 39 E  
Elevations: C.D.C./C.V./G.R. B.H.C./A.I.

Permit/Datum: MAT Elev. 4358.5'  
Log Measured from: MAT Ft. Above Permit/Datum: 0'  
Drilling Measured from: MAT Elev. 4358.5'

Date: 2-3-78  
Run No.: ONE  
Depth-Driller: 4824  
Bottom Logged Interval: 4826  
Top Logged Interval: 3182 @ 3185  
Casing-Logger: 3182 @ 3185  
Casing-Driller: 3182 @ 3185  
Type Fluid in Hole: FRESH WATER

Density and Viscosity: cc  
pH and Fluid Loss: cc  
Rm @ Meas. Temp: \*F  
Rmf @ Meas. Temp: \*F  
Rmc @ Meas. Temp: \*F  
Source of Rmf/Rmc: \*F  
Rm @ BHT: \*F  
Rmf @ BHT: \*F  
Rmc @ BHT: \*F

Witnessed By: MR. CLARK

FOLD HERE ↓ THIS HEADING AND LOG CONFORMS TO API RECOMMENDED STANDARD PRACTICE RP-21

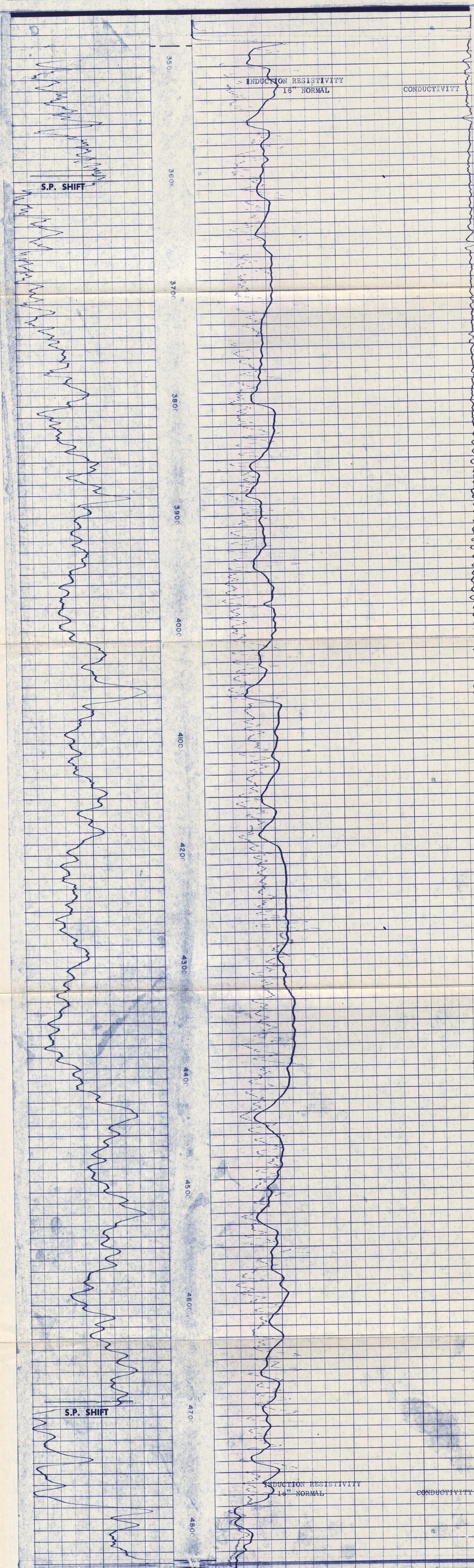
REMARKS: THIS IS A CORRECTED LOG.

Equipment Used			
Series No.	815		
Run No.	ONE		
S.O.	85387		
Tool No.	38166		
Elec. No.	38166		
Panel No.	28017		

Scale Changes			
Date	Sample No.	Type Log	Depth

Equipment Data			
Run No.	Tool Type	Pad Type	Tool Position
ONE	815	-	S.O.

SPONTANEOUS POTENTIAL	DEPTH	RESISTIVITY	CONDUCTIVITY
Millivolts		Ohms m <sup>2</sup> /m	Millimhos/m
		16" NORMAL	INDUCTION CONDUCTIVITY 40" SPACING
		0	0
		1000	500
		INDUCTION RESISTIVITY 40" SPACING	
		0	1000
		2" = 100'	
		L.R. 3482	



SPONTANEOUS POTENTIAL	DEPTH	RESISTIVITY	CONDUCTIVITY
Millivolts		Ohms m <sup>2</sup> /m	Millimhos/m
		16" NORMAL	INDUCTION CONDUCTIVITY 40" SPACING
		0	0
		1000	500
		INDUCTION RESISTIVITY 40" SPACING	
		0	1000

Company	C. E. R. CORPORATION/ERDA	Drillers T.D.	4824
Well	COSO SPRINGS #1	Log F.R.	4826
Field	COSO SPRINGS	Log T.D.	4830
County	INYO	Elevations:	
State	CALIFORNIA	K.B.	D.F. G.L. 4358.5

