

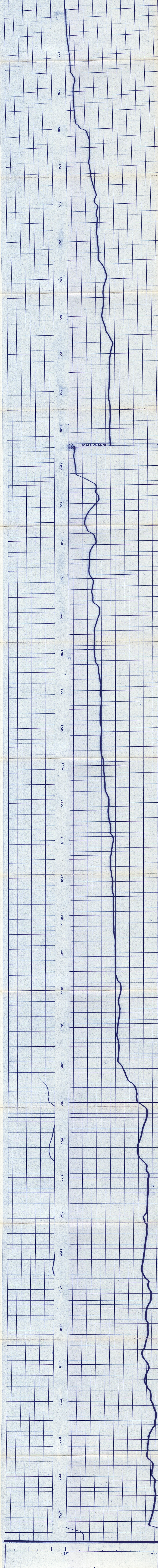
FILE NO. \_\_\_\_\_  
 Z = 104'  
 COMPANY: C. E. R. CORPORATION/ERDA  
 WELL: COSO SPRINGS #1  
 FIELD: COSO SPRINGS  
 COUNTY: INYO STATE: CALIFORNIA  
 LOCATION: N/A  
 DATE: 10-26-77  
 LOGGERS: TWP 22 S. RGE 29 E. S. 35  
 SECTION: 13 SE 35  
 INSTRUMENT DATA: S.I. 2112, S.O. 21706, Tool No. 36305, Elec No. 36305, Paper No. 24794

REMARKS: STOPPED CIRCULATION @ 1600' 10-26-77  
 LOGGER GOING INTO HOLE. REACHED TO @ 1930'  
 10-26-77.  
 MAXIMUM READING THERMOMETER PROBABLY HAS  
 ERROR IN READING 2.00°F  
 LOGS NOT CORRECTED FOR MEASUREMENT ERROR  
 WHILE LOGGING.

TEMPERATURE LOG DATA

Run No.	2	3	4
Date - Time	10-26-77/1845		
Tool Model No.	2112		
Tool Serial No.	36305		
Truck No.	KL6106		
Gradient Series	1		
Disturbance Series	1		
Logging Speed	100 F/H		
Type Well	GEOTHERMAL		
Log Purpose			
Fluid Level			
Well Pressure			
Shut In Time			
Intake Fluid Temp			
In / Prod Fluid Type			
In / Prod Rate			
In / Prod Volume			
In / Prod Time			
Cross Flow Check			

TEMPERATURE SURVEY



TEMPERATURE SURVEY

Company: C. E. R. CORPORATION/ERDA  
 Well: COSO SPRINGS #1  
 County: INYO  
 State: CALIFORNIA  
 Drillers T.D.: 4043  
 Log F.R.: 4053  
 Log T.D.: 4053  
 Elevations: K.B. 4378.5 D.F. - G.L. 4358.5

