

Combination Logging Systems  
 Compensated Neutron

COMPANY C.E.R. CORPORATION/ERDA  
 WELL COSO SPRINGS #1  
 COUNTY INYO STATE CALIFORNIA

LOCATION N/A  
 SEC 6 TWP 22 S RGE 39 E

Other Services  
 IEL  
 TRAC  
 FROG

DATE 10-27-77  
 TIME 10:27

LOG MEASURED FROM 0  
 ABOVE MEASURED FROM 0  
 LOG MEASURED TO 4358.5  
 ABOVE MEASURED TO 4358.5

LOG MEASURED FROM 0  
 ABOVE MEASURED FROM 0  
 LOG MEASURED TO 4358.5  
 ABOVE MEASURED TO 4358.5

LOG MEASURED FROM 0  
 ABOVE MEASURED FROM 0  
 LOG MEASURED TO 4358.5  
 ABOVE MEASURED TO 4358.5

LOG MEASURED FROM 0  
 ABOVE MEASURED FROM 0  
 LOG MEASURED TO 4358.5  
 ABOVE MEASURED TO 4358.5

LOG MEASURED FROM 0  
 ABOVE MEASURED FROM 0  
 LOG MEASURED TO 4358.5  
 ABOVE MEASURED TO 4358.5

LOG MEASURED FROM 0  
 ABOVE MEASURED FROM 0  
 LOG MEASURED TO 4358.5  
 ABOVE MEASURED TO 4358.5

LOG MEASURED FROM 0  
 ABOVE MEASURED FROM 0  
 LOG MEASURED TO 4358.5  
 ABOVE MEASURED TO 4358.5

LOG MEASURED FROM 0  
 ABOVE MEASURED FROM 0  
 LOG MEASURED TO 4358.5  
 ABOVE MEASURED TO 4358.5

LOG MEASURED FROM 0  
 ABOVE MEASURED FROM 0  
 LOG MEASURED TO 4358.5  
 ABOVE MEASURED TO 4358.5

LOG MEASURED FROM 0  
 ABOVE MEASURED FROM 0  
 LOG MEASURED TO 4358.5  
 ABOVE MEASURED TO 4358.5

LOG MEASURED FROM 0  
 ABOVE MEASURED FROM 0  
 LOG MEASURED TO 4358.5  
 ABOVE MEASURED TO 4358.5

LOG MEASURED FROM 0  
 ABOVE MEASURED FROM 0  
 LOG MEASURED TO 4358.5  
 ABOVE MEASURED TO 4358.5

LOG MEASURED FROM 0  
 ABOVE MEASURED FROM 0  
 LOG MEASURED TO 4358.5  
 ABOVE MEASURED TO 4358.5

LOG MEASURED FROM 0  
 ABOVE MEASURED FROM 0  
 LOG MEASURED TO 4358.5  
 ABOVE MEASURED TO 4358.5

LOG MEASURED FROM 0  
 ABOVE MEASURED FROM 0  
 LOG MEASURED TO 4358.5  
 ABOVE MEASURED TO 4358.5

LOG MEASURED FROM 0  
 ABOVE MEASURED FROM 0  
 LOG MEASURED TO 4358.5  
 ABOVE MEASURED TO 4358.5

LOG MEASURED FROM 0  
 ABOVE MEASURED FROM 0  
 LOG MEASURED TO 4358.5  
 ABOVE MEASURED TO 4358.5

LOG MEASURED FROM 0  
 ABOVE MEASURED FROM 0  
 LOG MEASURED TO 4358.5  
 ABOVE MEASURED TO 4358.5

LOG MEASURED FROM 0  
 ABOVE MEASURED FROM 0  
 LOG MEASURED TO 4358.5  
 ABOVE MEASURED TO 4358.5

LOG MEASURED FROM 0  
 ABOVE MEASURED FROM 0  
 LOG MEASURED TO 4358.5  
 ABOVE MEASURED TO 4358.5

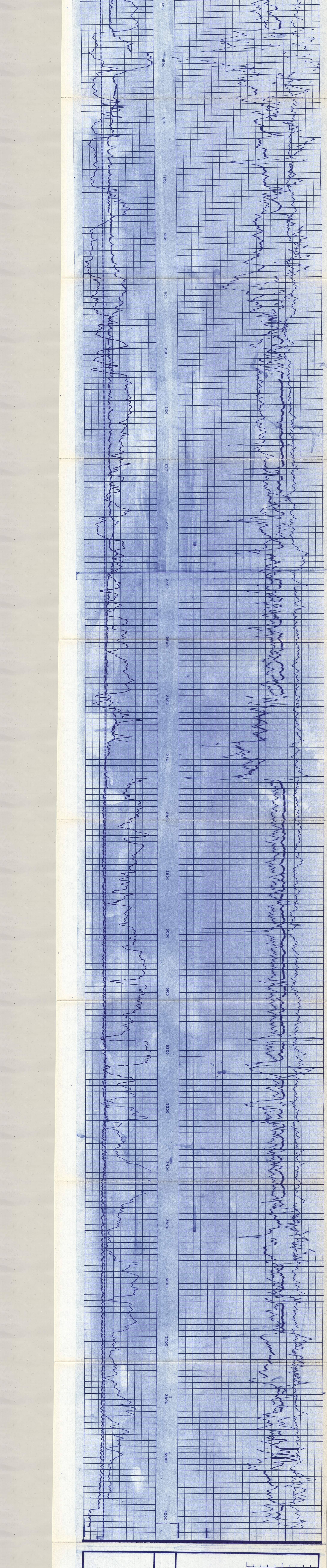
FOLD HERE

Remarks BHT @ 2330 HRS. ON 10-26-77 WAS 262°F  
 TEMP @ 2550' @ 0015 HRS. ON 10-27-77 WAS 200°F  
 TEMP @ 2550' @ 0238 HRS. WAS 230°F  
 FLUID LEVEL WAS 854' @ 0300 HRS. 10-27-77  
 LOG DEPTH RESET TO DRILLERS DEPTH & NOT CORRECTED  
 FOR MEASUREMENT ERROR WHILE LOGGING  
 NEUTRON  $\rho$  IS 0% TO 60% ON REPEAT SECTION.

RUN NO 1			RUN NO 2			RUN NO 3		
CDL	GR	GR	CDL	CNL	GR	CDL	CNL	GR
Series No	2207	2413	1306					
Seral No	31496	32946	31955					
Diameter	6.374	5.578	31.546					
Elect No	31496	32946	31955					
Detector Model No	TGT-109	CLASS.	0604					
Type	CTMT	CTMT	CTMT					
Date to Source	51720	51750						
Source Model No	438	33589						
Seral No	2224	2254	2111					
Computer No	26325	24794	24794					
Seral No	26325	24794	24794					

General		Compensated Density				Gamma Ray		API GR				
Run No	Depths	From	To	Speed Ft/Min	T.C. Sec	Density Scale	Correction Scale	Porosity Scale Data	T.C. Sec	Gamma Settings	Zero Div L or R	Units/Div
ONE	4020	1312	35	CCTC	2.0	3.0	0.05/CD	-	CCTC	322	0	20
ONE	4004	1296	35									

General		Compensated Neutron				Caliper						
Run No	Depths	From	To	Speed Ft/Min	T.C. Sec	Sers	Porosity Scale	Scale	Caliper Scale			
ONE	4010	1302	35	CCTC	CCTC	113	109	R15	3	65	15	1" / CD



HOLE SIZE-INCHES	0	200	DEPTH	2.0	2.5	3.0		
CALIPER	6	16	NEUTRON POROSITY %	45%	30%	15%	0%	-15%
GAMMA RAY	0	200	$\rho_{ma}$		$\rho_t$			
Company C.E.R. CORPORATION/ERDA		Drillers T.D. 4043		Log F.R. 4020				
Well COSO SPRINGS #1		Log T.D. 4022		Elevations:				
Field COSO SPRINGS		K.B. 4378.5		D.F. G.L.4358.5				
County INYO								
State CALIFORNIA								

